

1372

United States Department of the Interior  
National Park Service

National Register of Historic Places  
Registration Form



This form is for use in nominating or requesting determinations for individual properties and districts. See instructions in How to Complete the National Register of Historic Places Registration Form (National Register Bulletin 16A). Complete each item by marking "x" in the appropriate box or by entering the information requested. If any item does not apply to the property being documented, enter "N/A" for "not applicable." For functions, architectural classification, materials, and areas of significance, enter only categories and subcategories from the instructions. Place additional entries and narrative items on continuation sheets (NPS Form 10-900a). Use a typewriter, word processor, or computer, to complete all items.

1. Name of Property

historic name Attleborough Falls Historic District

other names/site number \_\_\_\_\_

2. Location

street & number Both sides of Mt. Hope Street just west of Reservoir Street to the 10 Mile River; Towne Street from Mt. Hope Street to the 10 Mile River n/a not for publication

city or town North Attleborough n/a vicinity

state Massachusetts code MA county Bristol code 005 zip code 02763

3. State/Federal Agency Certification

As the designated authority under the National Historic Preservation Act of 1986, as amended, I hereby certify that this  nomination  request for determination of eligibility meets the documentation standards for registering properties in the National Register of Historic Places and meets the procedural and professional requirements set forth in 36 CFR Part 60. In my opinion, the property  meets  does not meet the National Register Criteria. I recommend that this property be considered significant  nationally  statewide  locally. ( See continuation sheet for additional comments.)

Betsy Kuedling, National Register Director  
Signature of certifying official/Title Cara H. Metz, State Historic Preservation Officer  
Massachusetts Historical Commission

11/5/03  
Date

State or Federal agency and bureau

In my opinion, the property  meets  does not meet the National Register criteria. ( See continuation sheet for additional Comments.)

Signature of certifying official/Title

Date

State or Federal agency and bureau

4. National Park Service Certification

I, hereby certify that this property is:

- entered in the National Register
  - See continuation sheet.
- determined eligible for the National Register
  - See continuation sheet.
- determined not eligible for the National Register
- removed from the National Register
- other (explain): \_\_\_\_\_

Signature of the Keeper

Patrick Anders

Date of Action

1/6/2004

Attleborough Falls HD  
Name of Property

Bristol, MA  
County and State

**5. Classification**

**Ownership of Property**

(Check as many boxes as apply)

(Check only one box)

- private
- public-local
- public-State
- public-Federal

- building(s)
- district
- site
- structure
- object

**Number of Resources within Property**

(Do not include previously listed resources in the count.)

Contributing	Noncontributing	
62	8	building
1		sites
		structures
1		objects
64	8	Total

**Name of related multiple property listing**

(Enter "N/A" if property is not part of a multiple property listing.)

n/a

**Number of contributing resources previously listed in the National Register**

0

**6. Function or Use**

**Historic Functions**

(Enter categories from instructions)

DOMESTIC: single, multiple dwellings

INDUSTRY/manufacturing

**Current Functions**

(Enter categories from instructions)

DOMESTIC/ single, multiple dwellings

INDUSTRY/manufacturing

**7. Description**

**Architectural Classification**

(Enter categories from instructions)

COLONIAL: Colonial MID 19<sup>th</sup> CENTURY: Greek

Revival, Gothic Revival LATE VICTORIAN: Queen

Anne, Italianate 20<sup>th</sup> CENTURY: Bungalow

OTHER: Ranch

**Materials**

(Enter categories from instructions)

foundation

walls

roof

other

**Narrative Description**

(Describe the historic and current condition of the property on one or more continuation sheets.)

United States Department of the Interior  
National Park Service

National Register of Historic Places  
Continuation Sheet

Attleborough Falls HD  
N. Attleborough (Bristol), MA

Section number  /  Page  1

7. The Attleborough Falls Historic District is characterized by generally medium- to large-size houses set on ample lots along two meandering streets that meet at right angles along a ridge, approximately 170 feet above sea level, that forms the eastern bank of Falls Pond just south of the Ten Mile River. Mount Hope Street is relatively flat, but Towne Street drops more than 25 feet along its three-eighth-mile course between Mount Hope Street and the Ten Mile River. The gently rolling topography is wooded, especially heavily towards the rear of the house lots. The district has a decidedly 19<sup>th</sup>-century suburban feel to it, despite the presence of some 20<sup>th</sup>-century houses, and its character is quite different both from the more urbanized residential neighborhood that begins northeast of the district and from the rural open space to its south, now rapidly undergoing contemporary suburban residential development but not visible from the district.

**INVENTORY**

The inventory includes all buildings and other resources, both contributing and non-contributing, located within the district.

Unless otherwise noted in individual entries, all residential properties are wood-frame construction with brick foundations and asphalt-covered flank-gable roofs, and all garages are 1-story high wood-frame construction with asphalt-covered end-gable roofs.

**MOUNT HOPE STREET**

- 317 B. Freeman House (ca. 1890): A fine, well preserved 2½-story Queen Anne house with picturesquely asymmetrical massing, turned-post entrance porch, ample screened side porch, clapboard walls framed by applied strut-work, and cross-gabled high-hip roof with patterned slate shingles. Set well back from the street behind a cast-iron fence with granite posts, the house has an ample late 19<sup>th</sup>-century barn at rear. In the late 19<sup>th</sup> century it was the home of B. Freeman, whose relatives lived nearby at 390, 397, and 398 Mount Hope Street (*q.v.*). By the 1920s Charles and Annie Price lived here; he worked nearby at V.H. Blackington.
- 318 B. Makinson House (ca. 1890): A 2½-story staggered-T-plan house with cross-gabled high-hip roof; vinyl siding covers the house, much of its trim has been removed, and the front porch has been replaced. At rear is a handsome, unaltered L-plan barn with original sliding doors and window sash, diaperwork trim in the gable ends; immediately adjacent to the barn is a small, similarly unaltered shed or office, 2 bays deep and 1 bay wide, with two-over-two sash.

(continued)

United States Department of the Interior  
National Park Service

National Register of Historic Places  
Continuation Sheet

Attleborough Falls HD  
N. Attleborough (Bristol), MA

Section number 7 Page 2

- 
- 325 N. B. Follett House (ca. 1860): A 2½-story vinyl-sided vernacular Italianate house with 3-bay façade and 1½-story kitchen ell set back from the plane of the façade; on the 1<sup>st</sup> story of the main block, the center entrance, capped by a scroll-sawn bracketed hood, is flanked by semi-octagonal 1-story bay windows. At rear are a wood-shingled banked barn and a shed; a handsome stone wall forms the property's northern boundary.
- 329 William Aldrich House (ca. 1855): A 1½-story vinyl-sided gable-end-and-wing house with rubblestone foundation, 3-bay façade, scroll-sawn bracket hooded entrance, and turned-column kitchen porch with scroll-saw brackets.
- 330 M. Stanley House (ca. 1790): A 1½-story 5-bay-façade off-center-chimney house with granite rubblestone foundation, narrow windows and center entrance flanked by narrow sidelights; there is a mid-/late 20<sup>th</sup>-century addition on the southwest corner. A small shed is at the rear. In 1832, this was the home of M. Stanley.
- 332 Neuhaus House (ca. 1923): A fine, well preserved Bungalow with clapboard on the 1<sup>st</sup> story, wood shingles in the attic and on the porch parapet wall, massive pyramidal porch posts, and a prominent dormer centered on the façade. A 1-stall garage is at the rear of the lot. Hugo and Alice Neuhaus were first listed at this address in the 1924 directory; he was a jeweler; he may be the son of Adolph Neuhaus, who lived nearby at 78 Towne Street.
- 335 House (ca. 1890): A large 2½-story vinyl-sided house with a 5-bay façade and center entrance within enclosed front porch; 1<sup>st</sup>-story façade windows have been replaced with paired windows. In 1895, this belonged to the Stanley Brothers and may have been mill-workers housing.
- 338 House (ca. 1850, ca. 1920): A 2½-story, 5-bay-façade, center-entrance house with rubblestone foundation, high hip roof, and 1½-story kitchen ell set back from the plane of the façade to the northwest. The house retains a simple Greek Revival frame around the principal entrance, but walls are covered with vinyl and asbestos. It belonged to the Reed (or Read) family in the 19<sup>th</sup> century; by the mid-1920s it had been divided into two units.
- 347 White House (ca. 1929): A fine, interesting 2½-story Dutch Colonial house with a stuccoed foundation, 3-bay façade with tripartite windows on the first story flanking a projecting end-gable-roof vestibule, and pent roof circumscribing the building between 1<sup>st</sup> and 2<sup>nd</sup> story. Frank E. and Florence A. White were first listed at this address in the 1930 directory; he was a jeweler.

(continued)

United States Department of the Interior  
National Park Service

National Register of Historic Places  
Continuation Sheet

Attleborough Falls HD  
N. Attleborough (Bristol), MA

Section number 7 Page 3

- 
- 350 House (ca. 1880): A fine, well preserved 1½-story, 3-bay-façade, end-gable-roof house with floor-length windows on the façade's 1<sup>st</sup> story and a small ell on the northwest corner. A 2-stall barn stands at rear.
- 351 Shockro House (ca. 1952): A 1-story telescope-plan vinyl-sided ranch house with poured concrete foundation and progressively lower roof lines for each smaller section of the plan; a large picture window with 9 rectangular panes flanks the front door in the main block. Joseph T. and Grace C. Shockro were first listed at this address in the 1953 directory; he was a polisher.
- 354 Dr Phineas Savery House (ca. 1815, 1967): A fine wood-shingle 2-story, 5-bay-façade, low-hip-roof Federal house with poured concrete foundation and blind-elliptical-fanlight center entrance flanked by blind sidelights. Dr Savery's house originally stood on Commonwealth Avenue at the southeast corner of its intersection with Towne Street. When Central Congregational Church (115 Commonwealth Avenue)<sup>1</sup> built its parish house, the Savery House was relocated here; its first occupants on this site were Leland W. Olden, a construction worker, and his wife, Mary J. While this house was moved to its current location beyond the period of significance, it should be considered a contributing resource within the district because of its architectural significance. It is consistent in siting, scale, and quality of design with its neighboring houses to the degree that, in fact, only documentary research revealed that it is not on its original site.
- 355 Newell House (ca. 1917): A typical modest Dutch Colonial cottage with end-gambrel roof and full-width front porch. Howard S. and Hope E. Newell were first listed at this address in the 1918 directory; he was a partner in Newell Co., grocers located nearby at 2 Commonwealth Avenue, at the intersection with Mount Hope Street. His father lived nearby at 401 Mount Hope Avenue (q.v.).
- 362 Mann House (ca. 1890): A typical late 19<sup>th</sup>-century 2½-story, asbestos-sided multiple-family house with 2-bay façade, paired windows, and cross-gable roof.
- 371 Briggs House (ca. 1790): A 1½-story, center-chimney, 5-bay-façade house with granite-block foundation, center entrance beneath a 5-light transom window. A marker on the house reads "Rufus & Nancy (Rounds) Briggs, 1845," a reference to owners in the mid-19<sup>th</sup> century; the current occupant asserts that the house is considerably older, an assessment that visual analysis seems to corroborate.

(continued)

---

<sup>1</sup> An individual nomination for Central Congregational Church is currently in preparation.

United States Department of the Interior  
National Park Service

National Register of Historic Places  
Continuation Sheet

Attleborough Falls HD  
N. Attleborough (Bristol), MA

Section number 7 Page 4

- 
- 379 House (ca. 1900): A 2½-story, rectangular-plan house with stuccoed foundation and asymmetrical 4-bay façade with off-center entrance flanked on the north by a semi-octagonal bay window and on the south by two bays of windows. A shed dormer is on the north half of the roof on the façade.
- 383 Dow & Lincoln House (ca. 1850): A 2½-story, 5-bay-façade house with granite-block foundation and trabeated center entrance with sidelights and transom lights. Extensive additions to the rear, much larger than the original main block of the house, somewhat compromise the building's integrity, but it continues to maintain its historic presence within the overall streetscape.
- 390 Benjamin Stanley Freeman House (ca. 1850, ca. 1870) **(photo #2)**: A 2½-story house with granite-block foundation, 5-bay facade, prominent 4½-story mansard-roof entrance pavilion centered on the façade, wraparound front porch on the southeast corner, and prominent gabled dormers. Probably built around the middle of the 19<sup>th</sup> century as a 5-bay-façade Greek Revival or Italianate house, its tower, porch, and dormers imbue the strong High Victorian flavor. In the late 19<sup>th</sup> century, it was the home of jewelry manufacturer Freeman, whose factory was across the ponds at 35 Robinson Street.<sup>2</sup> Other members of the Freeman family lived nearby at 317, 397, and 398 Mount Hope Street (*q.v.*). By the mid-1920s, the house had been divided into apartments.
- 393 House (ca. 1890): A 1½-story, end-gable-roof house, with stuccoed foundation, 2-bay façade, broad, shallow tripartite bay window, and decorative shingles in the gable end.
- 395 Reed House (ca. 1850) A Greek Revival gable-end-&-wing house with granite-block foundation, 2½-story main block and 1½-story ell, granite-block foundation, 3-bay façade with trabeated sidelight-framed entrance, and handsome strap-work porch set within the intersection of the two wings.
- 397 Freeman House (ca. 1855): A 1½-story Gothic Revival house with 5-bay façade, center entrance below a hood on scroll-sawn brackets, prominent central cross gable with paired windows, and a kitchen ell parallel to the main axis of the main block extending from the southeast corner. The cadet version of the more impressive house across the street at 398 (*q.v.*), this was the home in 1858 of J. J. Freeman, no doubt a relation of Benjamin Freeman.

(continued)

---

<sup>2</sup> B.S. Freeman & Co. is included as part of the Commonwealth Avenue Historic District submitted concurrently with this nomination.

United States Department of the Interior  
National Park Service

National Register of Historic Places  
Continuation Sheet

Attleborough Falls HD  
N. Attleborough (Bristol), MA

Section number 7 Page 5

- 
- 398 Freeman House (ca. 1855): A handsome, impressive, well-preserved Gothic Revival house commandingy sited on the crest of the hill. Its 3-bay façade has a glazed double-leaf entrance below a prominent bracketed hood on scroll-sawn consoles; flanking the entrance are semi-octagonal-plan bracketed bay windows, each below a prominent cross gable inset with round-head windows. Prominent chimneys are symmetrically placed at the crest of the roof. The kitchen ell, with full-width porch and vestibule, extends from the southwest corner parallel to the main axis of the main block. No doubt one of the jewelry-manufacturing Freemans whose plant was on Robinson Street, Freeman chose to live in close proximity to family members.
- 401 Newell House (ca. 1880): A 2½-story cross-gable-roof 2-family house with narrow paired windows and paired-bracket cornice. At rear are 2 garages, a 3-stall and a 1-stall. Oscar D. Newell and his wife, Abbie S. lived here from the mid-1890s through the mid-1920s; he was a proprietor of The Newell Co., grocers just down the street at 2 Commonwealth Avenue. His son Howard S. Newell lived nearby at 355 Mount Hope Street (*q.v.*).
- 404 Miller House (ca. 1941): A 1½-story vinyl- (façade) and wood-shingle-clad (sides) Cape Cod house with poured-concrete foundation, recessed center entrance flanked by semi-octagonal-plan bay windows, two symmetrically placed dormers on the roof, and a chimney centered on the south wall. There is a contemporary 2-stall garage at rear. Leigh V. Miller, an assistant manager in Providence, Rhode Island, was first listed here in the 1942 directory.
- 408 Diamond House (ca. 1948): A rambling, spreading 1-story shingled ranch house with stuccoed foundation, very low cross-gable roofs, this has very much the look of the 1930s and 1940s California ranch houses so much promoted in shelter magazines of the day. Joseph E. and Anna M. Diamond were first listed here in the 1949 directory; he was the manager of Diamond's Café & Real Estate just down the street at 450 Mount Hope Street.
- 409 House (ca. 1855): A vinyl-sided 1½-story gable-end-and-wing house with granite-block foundation, 3-bay façade and additions to the north side of the main block and to the east and west sides of the wing. It had several owners in the 19<sup>th</sup> century; by the mid-1920s it was the home of Edward W. Fiske, a clerk at nearby Newell & Co., grocers, and his wife, Minnie E.
- 417 Tillinghast House (ca. 1850): A 1½-story vinyl-sided house with rubblestone foundation and an odd 6-bay façade; it appears as if an addition were made to the south end of a standard 5-bay-façade, center-entrance house. There is a 2-stall garage at rear. In 1858, it was the home of J.J. Tillinghast.

(continued)

United States Department of the Interior  
National Park Service

National Register of Historic Places  
Continuation Sheet

Attleborough Falls HD  
N. Attleborough (Bristol), MA

Section number 7 Page 6

TOWNE STREET

- 4 Sturdy House (ca. 1954): A 1½-story vinyl-sided Cape Cod house with poured-concrete foundation, center entrance 3-bay façade and brick-faced cross-gable roof ell set back from the main block of the house; a 2-stall garage is attached to the ell. Raymond R. Sturdy, Jr, a salesman at Cheever, Tweedy & Co., manufacturing jewelers, and his wife, Elizabeth R., were first listed here in the 1955 directory. (NC)
- 7 Alexander House (ca. 1955): An interesting and unusual 1-story stuccoed International Style house with stuccoed foundation, flat roof, and clustered windows at its corners. Ernest A. and Doris A. Alexander were first listed here in the 1955 directory; he was an electrician. While this is outside the period of significance, it should be re-evaluated once it exceeds the fifty-year exclusion for non-exceptional properties. (NC)
- 15 Eklund House (ca. 1925): A vinyl-sided 1½-story Bungalow with stuccoed foundation, full-width front porch set within the flared-out front roofline and a full-width shed dormer. George and Marie Eklund were first listed here in the 1926 directory; he was a designer.
- 22 Stanley House (ca. 1973): A 1-story, L-plan ranch house with poured-concrete foundation, principal entrance in the end of the short axis. Gerald R. and Margaret A. Stanley were first listed here in the 1974 directory; he was a manager at Fairfield Optical. (NC)
- 25 House (ca. 1825) (photo #4): A 2-story, low-hip-roof Federal house with a 5-bay-façade and center entrance flanked by 4-light sidelights and capped by a shallow blind elliptical fanlight. An ell on the southwest corner connects with a large 2-story, 2-stall end-gambrel-roof garage.
- 31 Jones House (ca. 1950): An exceptionally modest 1-story vinyl-sided ranch house with poured-concrete foundation, 3-bay façade, and center entrance. A 1-stall garage is at the rear. Fred L. and Hazel E. Jones were first listed here in the 1951 directory; he was a superintendent.
- 32 Briggs House (ca. 1870): A narrow, vertical 1½-story shingled Gothic cottage with rubblestone foundation, 3-bay façade, low 1-story addition to the west, a prominent cross gable with round-head window centered on the façade; paired windows flank the center entrance set below a bracketed hood with turned pendants supported by heavy consoles. There is a 1-story end-gable-roof shed at rear. In 1895, A. F. Briggs, jeweler, lived here. By 1926 Albert R. and Evelyn F.

(continued)

United States Department of the Interior  
National Park Service

National Register of Historic Places  
Continuation Sheet

Attleborough Falls HD  
N. Attleborough (Bristol), MA

Section number 7 Page 7

---

Briggs were here; he was a superintendent. In 1951 Attleborough Falls Grade School janitor Chester E. Briggs lived here with his wife, Rose C.

- 39 Bailey House (ca. 1850): A shingled 2½-story, 5-bay-façade, center-entrance house with granite-block foundation and Colonial Revival entrance porch; late 20<sup>th</sup>-century changes include a brick chimney on the exterior of the west wall and replacement casement windows on the west side of the façade's 1<sup>st</sup> story. A. Bailey lived here in the mid- and late 19<sup>th</sup> century.
- 47 Dawson House (ca. 1955): A low, rambling 1-story ranch house with poured-concrete foundation and low hip roof. William A. Dawson, Jr, advertising manager for WARA radio, and his wife, Josephine, were first listed here in the 1956 directory. (NC)
- 61 House (ca. 1830): Set well back from the street, this is a 2½-story, 5-bay-façade, Greek Revival house with granite-block foundation, trabeated entrance framed by multiple-pane side lights and a transom light. A mid-20<sup>th</sup>-century shed stands at rear.
- 66 F. Shepardson House (ca. 1875): A typical vernacular L-plan, 2½-story asbestos-sided farmhouse with scroll-saw-bracket-post porch set within the angle of the L; the center entrance, with handsome double-leaf doors is set at the intersection of the two wings, and a semi-octagonal-plan bay window extends from the projecting short wing. At rear is a handsome cross-gable roof 1½-story 2-stall barn.
- 71 Peasley House (ca. 1952): A 1½-story house with poured-concrete foundation, asymmetrical 3-bay façade, dormers that break through the cornice, and a 1-story ell on the southwest corner connected to a 1-stall garage. Herbert A. Peasley, a set up man, and his wife, Hazel V., were first listed here in the 1953 directory.
- 78 Neuhaus House (ca. 1880): A staggered-butt-wood-shingle 1½-story, 5-bay-façade house with rubblestone foundation, Federal Revival center entrance with traceried sidelights and shallow semi-elliptical fanlight set within a 1-story shed-roof porch, prominent shed-roof dormer above the entrance, and a 2-story addition down the hill and to the rear on the west side. Adolph Neuhaus, a jeweler, lived here with his family from the mid-1890s at least through the 1920s; he may be the father of Hugo Neuhaus, who built a house at 332 Mount Hope Street in the early 1920s.

(continued)

United States Department of the Interior  
National Park Service

National Register of Historic Places  
Continuation Sheet

Attleborough Falls HD  
N. Attleborough (Bristol), MA

Section number 7 Page 8

- 
- 81 House (ca. 1930): A 2½-story Dutch Colonial house with poured-concrete foundation, side-hall entrance and multiple-pane deep bay window on the 1<sup>st</sup> story and 4-bay shed dormer above; the flared lower slope of the gambrel forms wide eaves that shelter the bay window and entrance vestibule, whose pedimented roof engages with the gambrel's flare. This house does not appear in the street directories until 1960; it may have been moved to this site at that time. (NC)
- 87 Cummings House (ca. 1880): A mansard cottage with full-width front porch and bracketed eaves. In 1895, Mrs M. Cummings lived here; by 1926 it was the home of Louis A. Foreman, who worked at J. F. Sturdy's Sons, jewelry manufacturers, and his wife, Luetta F.
- 95 House (ca. 1880): A 3-bay-façade mansard cottage with scroll-sawn bracket entrance hood and 1-story ell at rear. In the mid-1902s it was the home of laborer Willard MacEachron and his wife, Rita M.
- 100 Sturdy House (1880s, 1920s): A 2½-story, 5-bay façade house with prominent semi-octagonal-plan 2-story entrance pavilion, bay window on the west side, heavy modillion cornice, and prominent central dormer. Jewelry manufacturer Frederick E. Sturdy (b.1849) built this as a Queen Anne house next door to that of his father, John F. Sturdy; his son F.E. Sturdy, Jr. (also a jewelry manufacturer in the family firm) and his wife, Amy G., remodeled it in the then-fashionable Colonial Revival mode in the 1920s. The extensive, handsomely landscaped property includes a garage, a barn, and a cottage.
- 103 Cheever House (ca. 1880): A vinyl-sided 2½-story, 5-bay-façade house with double-leaf entrance set within a 1-story entrance porch, now supported on flimsy iron railings. A 3-stall garage stands at rear. By 1895 Mrs M. Cheever ran a boarding house here.
- 110 John F. Sturdy House (ca. 1870) **(photo #5)**: A handsome, highly plastic Second Empire cottage with an ell that rambles picturesquely southwest from the main block. The main block is a 1½-story, 3-bay-façade rectangular-plan mass with center entrance set in a 1-story porch flanked by semi-octagonal-plan bay windows, heavy bracketed cornice, and pedimented dormers that emerge on scrolled consoles from the concave mansard roof. The southwest ell culminates in a large, square-plan pavilion with an exceptionally prominent 2-story high-hip roof with pedimented dormers at the lower level and triangular lights above. A curving driveway sweeps across the lushly planted front lawn, dominated by a large copper beach. Gold-plate manufacturer John F. Sturdy (1822-1908) went into business at The Falls in 1849 with his brother James H. Sturdy (b.1823). After his brother's

(continued)

United States Department of the Interior  
National Park Service

National Register of Historic Places  
Continuation Sheet

Attleborough Falls HD  
N. Attleborough (Bristol), MA

Section number 7 Page 9

retirement, partnerships with others, and sole proprietorship for 13 years, he took in his sons in 1875, who continued the business into the 20<sup>th</sup> century. Sturdy was well known for village beautification, including his own property: In the early 1890s, John Daggett wrote, "Mr. Sturdy's residence is at...the Falls.... He is interested in the improvement and beautifying of this pleasant little village, and many years ago took steps in that direction by making an attractive home for himself, which he surrounded by well-kept grounds."<sup>3</sup> He was known as well for his generosity to the community, especially nearby Central Congregational Church, 115 Commonwealth Avenue (*q.v.*).

- 118 House (ca. 1850): A 1½-story, 5-bay-façade, center-entrance house with stuccoed foundation and double-slope roof that sweeps over the full-width front porch, probably a later addition. A shed stands at rear.

### Archaeological Description

While no ancient Native American sites are currently recorded in the district, it is possible that sites are present. Seven sites have been recorded in the general area (within one mile). Environmental characteristics of the district represent several locational criteria (slope, soil drainage, proximity to wetlands) that are favorable for the presence of Native American sites. Much of the district includes level to moderately sloping, rolling topography comprised of well-drained soils formed in glacial till. The entire district is located within 1,000 feet of Falls Pond, unnamed ponds, and wetlands within the Ten Mile River drainage. The Ten Mile River actually forms the northeast edge of the district. The confluence of the Ten Mile and Bungay Rivers lies approximately one mile southeast of the district. The Ten Mile River forms part of the Narragansett Bay drainage eventually reaching the estuarine zone to the south in Seekonk. Downstream from the district, the Ten Mile River drainage is a documented locus of Native American settlement along the Ten Mile, Bungay, and Seven Mile Rivers. At least 34 sites are known in the short distance between Attleborough Falls and Attleborough Center within one to two miles southeast of the district. Given the above information, the size of the district (42 acres), and the availability of open land in the district, a high potential exists for the recovery of ancient Native American resources.

(continued)

<sup>3</sup> John Daggett, *A Sketch of the History of Attleborough From Its Settlement to the Division* (Boston, 1894), p. 596.

**United States Department of the Interior  
National Park Service**

**National Register of Historic Places  
Continuation Sheet**

**Attleborough Falls HD  
N. Attleborough (Bristol), MA**

Section number 7 Page 10

---

A high potential also exists for locating historic archaeological resources in the district. While some 17<sup>th</sup> century settlement occurred in the North Attleborough locale, documented settlement in the district did not take place until the late 18<sup>th</sup> century. Throughout the late 18<sup>th</sup> and early 19<sup>th</sup> centuries settlement in the district was characterized by isolated rural farmsteads. Only three extant examples from this period survive in the district at 330 Mount Hope Street (ca.1790), 371 Mount Hope Street (ca.1790), and 25 Towne Street (ca.1820). Structural evidence of residences, barns, and outbuildings may survive from the late 18<sup>th</sup>/early 19<sup>th</sup> century period however; no examples have yet been identified. Archaeological evidence of occupational related features (trash pits, privies, wells) from this period may survive with sites of early farmsteads and with the extant farm residences noted above. During the mid-19<sup>th</sup> and 20<sup>th</sup> centuries, industrial development along the Ten Mile River stimulated residential settlement in the district. Potential sites from this period have not been identified but may also include structural evidence of residences, barns, and outbuildings. Archaeological evidence of barns, outbuildings, and occupational related features can exist with extant homes as well as archaeological sites.

(end)

Attleborough Falls HD

Name of Property

Bristol, MA

County and State

**8. Statement of Significance**

**Applicable National Register Criteria**

(Mark "x" in one or more boxes for the criteria qualifying the property for National Register listing.)

- A** Property is associated with events that have made a significant contribution to the broad patterns of our history.
- B** Property is associated with the lives of persons significant in our past.
- C** Property embodies the distinctive characteristics of a type, period, or method of construction or represents the work of a master, or possesses high artistic values, or represents a significant and distinguishable entity whose components lack individual distinction.
- D** Property has yielded, or is likely to yield, information important in prehistory or history.

**Criteria Considerations**

(Mark "x" in all the boxes that apply.)

Property is:

- A** owned by religious institution or used for religious purposes.
- B** removed from its original location. (354 Mt. Hope)
- C** a birthplace or grave.
- D** a cemetery.
- E** a reconstructed building, object, or structure.
- F** a commemorative property.
- G** less than 50 years of age or achieved significance within the past 50 years.

**Narrative Statement of Significance**

(Explain the significance of the property on one or more continuation sheets.)

**9. Major Bibliographical References**

(Cite the books, articles, and other sources used in preparing this form on one or more continuation sheets.)

**Previous documentation on file (NPS):**

- preliminary determination of individual listing (36 CFR 67) has been requested
- previously listed in the National Register
- previously determined eligible by the National Register
- designated a National Historic Landmark
- recorded by Historic American Buildings Survey # \_\_\_\_\_
- recorded by Historic American Engineering Record # \_\_\_\_\_

**Areas of Significance**

(Enter categories from instructions)

Architecture

Community Development

**Period of Significance**

ca. 1790-1953

**Significant Dates**

N/a

**Significant Person**

(Complete if Criterion B is marked above)

**Cultural Affiliation**

**Architect/Builder**

N/a

**Primary location of additional data:**

- State Historic Preservation Office
- Other State agency
- Federal agency
- Local government
- University
- Other

Name of repository:

\_\_\_\_\_

**United States Department of the Interior  
National Park Service**

**National Register of Historic Places  
Continuation Sheet**

**Attleborough Falls HD  
N. Attleborough (Bristol), MA**

Section number   8   Page   1  

8. The Attleborough Falls Historic District, North Attleborough, Massachusetts, meets criteria A and C on the local level for its associations with the development of North Attleborough and for its well-preserved representatives of nineteenth- and twentieth-century rural and suburban domestic architecture. It achieves significance in the areas of community development and architecture. The arrangement of the houses and their outbuildings along Mount Hope and Towne Streets illustrates both the emergence of the area from a rural agricultural community to suburban adjunct of an urbanizing area, and the development of a distinctive suburban pattern that emerged in the mid-19<sup>th</sup> century and continued into the 20<sup>th</sup> century. Its collection of stylish houses in a range of styles and forms popular from the early 19<sup>th</sup> through the mid-20<sup>th</sup> centuries embodies the typical characteristics of domestic architecture built during that period.

**HISTORY**

**TOWN OF NORTH ATTLEBOROUGH HISTORY**

Located 30 miles south of Boston in Bristol County, North Attleborough was part of the 1666 Rehoboth North Purchase. North Attleborough was part of the Town of Attleborough from its incorporation in 1694 until its incorporation as a separate township in 1887.

The tract granted in 1666 to the inhabitants of Rehoboth by the Plymouth Colony included parts of present-day Attleborough, Mansfield, and Norton, Massachusetts, and Cumberland, Rhode Island. The earliest English settlement in present-day North Attleborough was by John Woodcock on today's East Washington Street before 1670. When the Town of Attleborough was incorporated in 1694, its population counted 180. Ample water supply from Whitings Pond to the west and Ten Mile River to the east encouraged settlement of the area; saw and grist mills were among the area's earliest commercial and industrial activities. Early English settlement in the area that became North Attleborough focused at the villages of Old Town, North Village, and Attleborough Falls and remained primarily agricultural with subsistence milling until the middle of the 19<sup>th</sup> century. As early as the Federal Period, however, North Village and Attleborough Falls became increasingly industrialized along power privileges of the Ten Mile River.

By the mid-19<sup>th</sup> century, North Attleborough began to bloom as a jewelry- and precious-metals-manufacturing center. By 1855, the northern portion of Attleborough had a population of nearly 3000 and supported twenty-four jewelry manufacturers. The Civil War magnified the area's precious-metals-manufacturing role with extensive commissions from the United States government for uniform buttons, braid, badges, and emblems. Old Town remained the community center until the development of the Town

**(continued)**

United States Department of the Interior  
National Park Service

National Register of Historic Places  
Continuation Sheet

Attleborough Falls HD  
N. Attleborough (Bristol), MA

Section number 8 Page 2

---

Center along North and South Washington Streets, beginning in the mid-19<sup>th</sup> century and accelerating after the advent of the railroad west from the main Boston-Providence line to South Washington Street in 1870. North Attleborough was incorporated in 1887 after separation from Attleborough itself. Until the mid-20<sup>th</sup> century, North Attleborough remained an internationally known center for jewelry manufacturing.

#### ATTLEBOROUGH FALLS HISTORY

Attleborough Falls is the site of some of the Town of North Attleborough's most significant industrial development. It retains important industrial, domestic, and institutional buildings as well as a fine mid-19<sup>th</sup> century rural cemetery.

Development at The Falls by non-Native Americans began no later than the beginning of the 18<sup>th</sup> century. By 1703 John Daggett was operating a corn mill at The Falls, and a sawmill was probably located here as well. Neither the early mills nor any buildings or structures remain of the sparse 18<sup>th</sup>-century development that occurred around The Falls.

The present industrialization of the area dates to 1809, when Artemis Stanley sold the property located today at 426 Mount Hope Avenue to a group of investors (including himself) who built a factory on the water privilege. The mill burned in 1811 and was immediately rebuilt on the site; that wood-frame building remained on the site at least until the end of the 19<sup>th</sup> century. In 1831, the 125-acre reservoir, known today as Falls Pond, was created west of the falls, and a stone mill, sixty-eight by thirty-eight feet, was erected. The stone mill was expanded 1857 and later. The original stone mill for the Falls Manufacturing Company housed cotton production until after Civil War, when H. N. Daggett converted it to braid manufacturing.

The Falls was the site of the first company in the United States formed for the manufacture of metal buttons. In 1812 Colonel Obed and Otis Robinson began manufacturing buttons in a building on the Ten Mile River at Robinson Street. This building is probably not extant.<sup>1</sup> The wooden mill complex at 35 Robinson Street housed the B. S. Freeman & Co. jewelry manufactory from 1847 until 1913, although exclusive use of the complex for jewelry continued into the 1960s.

(continued)

---

<sup>1</sup> Robinson's factory or a portion thereof may be incorporated in the Freeman-Sturdy Factory at 35 Robinson Street, but a physical examination of that complex is needed to determine its evolution.

United States Department of the Interior  
National Park Service

National Register of Historic Places  
Continuation Sheet

Attleborough Falls HD  
N. Attleborough (Bristol), MA

Section number 8 Page 3

In 1857, V. H. Blackington purchased an old wooden schoolhouse on Commonwealth Avenue and began manufacturing jet jewelry. The complex was rebuilt--again in wood--following a fire in 1869. It expanded though the 19<sup>th</sup> century and continued production at 100 Commonwealth Avenue until late in the 20<sup>th</sup> century.

Paper-box manufacturing, an important ancillary to the jewelry industry so important regionally, began in North Attleborough in 1851. In 1891 J. F. and C. O. Mason began producing jewelry boxes in a small gable-roof building at the west end of their complex at 521 Mount Hope Avenue. The company expanded into a spreading two-story wood-frame building completed ca 1910. Production of paper boxes continues today in the same location, but much of the complex was covered in the mid-1990s with vertical-seam aluminum siding, and most of the fenestration has been replaced.

An impressive variety of domestic architecture complements the industrial complexes in The Falls. These houses and their outbuildings, in fact, are related to the industrial development here. The larger, more stylish houses were occupied by the mill owners and investors or their families; the smaller and often similar ones, by those who worked in the mills. For example jewelry manufacturer B. S. Freeman, whose plant stands at 35 Robinson Street, lived up the hill at 390 Mount Hope Avenue in an imposing house dominated by a four-story mansard-roof entrance tower and wraparound front porch. S. D. Mason, a relative of the box manufacturers, lived in a fine Modern Gothic house at 204 Commonwealth Avenue. V. H. Blackington lived at 172 Commonwealth Avenue, just a short walk from his factory at number 100. In the late 19<sup>th</sup> century, H. B. Davenport built a row of small almost-identical houses on the north side of (appropriately named) Cottage Street; these were likely occupied by workers at nearby B. S. Freeman & Co.

The extant buildings and their relationships one to another have the capacity physically to illustrate the social history of the area. After H. N. Daggett purchased the old Falls Factory in 1861, the:

...property had become somewhat run down; the tenements and their surroundings were so shabby and untidy, and some of the residents were so lawless that the community had come to have a rather disreputable name. .... As soon as he took possession, Mr. Daggett established order and had it maintained, and the "roughs" who had become a real terror, under his decided and vigorous treatment "either left town, or subsided into peaceful citizens." He has greatly improved the whole property, erected new buildings, and made for himself there a charming home.<sup>2</sup>

<sup>2</sup> John Daggett, *A Sketch of the History of Attleborough From Its Settlement to the Division* (Boston, 1894), p. 524.

United States Department of the Interior  
National Park Service

National Register of Historic Places  
Continuation Sheet

Attleborough Falls HD  
N. Attleborough (Bristol), MA

Section number 8 Page 4

Daggett's large house on ample grounds at the intersection of Elm Street and Mount Hope Avenue has disappeared, but the mill itself and the tenements along the east side of Mount Hope Avenue between Elm Street and Commonwealth Avenue remain. John F. Sturdy, a gold-plate-jewelry manufacturer, occupied a rambling concave-mansard-roof dwelling at 110 Towne Street; handsomely landscaped--and probably incorporating historic landscape features--his property recalls his interest "...in the improvement and beautifying of this pleasant little village ... by making an attractive home, for himself which he surrounded by well-kept grounds."<sup>3</sup> Sturdy's house is immediately around the corner and across the Ten Mile River from Central Congregational Church, which benefited from his generous gifts, and he "...was one of the unusually efficient building committee when its edifice was erected."

By the late 1840s need was perceived for a new cemetery in Attleborough. Like many industrializing communities, the citizens of Attleborough wanted an isolated, carefully landscaped rural cemetery, a type of burial ground just coming into fashion. Set behind an Egyptian Revival brownstone gate, Mount Hope Cemetery, follows the picturesque precepts already realized in Cambridge's Mount Auburn Cemetery (1831) and Providence's Swan Point Cemetery (1847), both of which were surely known to the incorporators of Mount Hope. At its consecration on 2 June 1850, the Rev'd J. M. B. Bailey extolled the virtues of the rural cemetery as a transcendent place when he noted that the cemetery was:

...so far removed from the stir and bustle of active life... [and its landscape] ...diversified with brook and pond and rushing stream, with plain and hillock, with gentle declivity and retiring vale, with sunshine and shade, with the natural forest and the cultivated grove. .... Let everything connected with, and belonging to, this most interesting place, its trees, its monuments, its grass, its foliage, its evergreens, point the visitor to the resurrection and the life to come.<sup>4</sup>

The Falls retains intact historic resources that achieve significance in the areas of industry, architecture, social history, and landscape architecture. The Falls Factory complex, Freeman-Sturdy Factory, and V. H. Blackington are telling artifacts about textile and jewelry manufacturing. The clusters of houses along Freeman and Towne Streets and Commonwealth and Mount Hope Avenues and several individual isolated houses--such as the Stanley brothers' houses at 66 Stanley and 327 Towne Streets--are fine, representative examples of late 19<sup>th</sup> century domestic architecture. The juxtapositions of industrial, residential, and institutional buildings tell of important community social interrelationships. Mount Hope Cemetery and the grounds of the John F. Sturdy House are good examples of historic landscape.

(continued)

<sup>3</sup> *Ibid.*, p. 596.

<sup>4</sup> *Ibid.*, p. 753.

United States Department of the Interior  
National Park Service

National Register of Historic Places  
Continuation Sheet

Attleborough Falls HD  
N. Attleborough (Bristol), MA

Section number 8 Page 5

---

ATTLEBOROUGH FALLS HISTORIC DISTRICT HISTORY

The area within the Attleborough Falls Historic District was developed over a period of more than 150 years and illustrates the change in developmental patterns from rural to suburban. Both streets within the Falls District were in place by the beginning of the nineteenth century. The first extant houses here, 330 and 371 Mount Hope Street (both ca. 1790), 25 Towne Street (ca. 1825), and 61 Towne Street (ca. 1830), were probably relatively isolated with no other close neighbors.<sup>5</sup> Development began to occur more steadily by the mid-19<sup>th</sup> century, a reflection, no doubt, of the industrialization occurring nearby along the Ten Mile River. The area became a neighborhood of choice for Falls jewelry manufacturers in the late 19<sup>th</sup> century as home to members of both the Freeman and Sturdy families.<sup>6</sup> Suburban development continued apace through the early and mid-20<sup>th</sup> centuries.

COMMUNITY DEVELOPMENT

Building patterns in the district illustrate two distinctive patterns. The presence of early farmhouses, large mid-19<sup>th</sup> century dwellings, and modest 20<sup>th</sup> century houses illustrates how an area emerges from farmland to suburb. The character of the residential development shows a conscious, if not explicitly stated, suburban aesthetic that developed beginning in the mid-19<sup>th</sup> century.

The earliest houses in the district were farmhouses. When built, the houses at 330 Mount Hope, 371 Mount Hope, and 25 Towne Streets were isolated, and their sites were no doubt selected because of that isolation and the availability of land around them. The substantial houses at 317, 390, and 398 Mount Hope Street and at 61, 100, and 110 Towne Street, all erected in the second half of the 19<sup>th</sup> century, most of them located on large lots, were built by industrialists with nearby businesses; they probably chose the sites for their houses because of the combination of convenience of location to everyday activities as well as the aesthetics, both inherent and potential, of the location. These houses established a suburban presence in the area that continued into the 20<sup>th</sup> century, when more modest suburban houses on slightly smaller lots were built. The occupants of the 20<sup>th</sup> century houses were probably even less concerned with immediate proximity to their workplaces because of the availability first of mass transit on nearby Commonwealth Avenue and then of personal transportation in the form of the automobile. Farmland, manufacturers' suburb near the factory, and 20<sup>th</sup> century automobile suburb are all clearly legible in the district.

---

<sup>5</sup> Maps do not exist for the earliest period of development here, and written sources do not describe development in the area.

<sup>6</sup> Both families' businesses are associated with the factory at 35 Robinson Street, included in the Commonwealth Avenue Historic District, submitted concurrently with this nomination.

United States Department of the Interior  
National Park Service

National Register of Historic Places  
Continuation Sheet

Attleborough Falls HD  
N. Attleborough (Bristol), MA

Section number 8 Page 6

---

The two streets in the district pre-date most of the district's development. The quality of the topography, however, lent to the desirability of the area for picturesque suburban development: the curving roads, the water views in both the Falls Pond and the Ten Mile River, and the gently rolling topography were characteristics extolled by landscape gardener Andrew Jackson Downing in the middle years of the 19<sup>th</sup> century. While there is no explicit connection between the houses built here and Jackson's treatises, the fact of the properties' development in a setting similar to those he advocated suggests some conscious attempt to emulate his ideals. The character of American suburban development was greatly influenced by Downing's work, and the district has the capacity to illustrate that transition.

#### ARCHITECTURE

The range of architectural styles in the district includes representatives from the Colonial/Federal era into the Cape Cod, Ranch, and International styles of the mid-20<sup>th</sup> century. The late 18<sup>th</sup>-century Stanley House at 330 Mount Hope Street and the Briggs House at 371 Mount Hope Street follow the 1½ story, five-bay-façade, center-entrance format found in many rural Southern New England farmhouses from the mid-18<sup>th</sup> through the early 19<sup>th</sup> centuries. Dr Phineas Savery's House (ca. 1815), 354 Mount Hope Street, with low hip roof and five-bay façade with center entrance capped with a broad, blind semi-elliptical fanlight shows the more delicate forms and details that characterize architecture of the Federal era; while moved from a nearby site on Commonwealth Avenue; it retains architectural integrity and its new site is not remarkably different in context from the site on which it originally stood.

As jewelry manufacturing began to thrive in the middle and later years of the 19<sup>th</sup> century, the wealth generated allowed manufacturers to build larger, more elaborate houses in the proliferating variety of styles then popular. Members of the Freeman family built two Gothic Revival houses in the middle of the century, a modest cottage at 397 Mount Hope Street and a more impressive (and more impressively sited) house across the street at 398 Mount Hope Street. American architecture influenced by that of France's Second Empire came into vogue in the third quarter of the 19<sup>th</sup> century, and two houses amply illustrate that phenomenon: Benjamin Stanley Freeman's house at 390 Mount Hope Street probably began its existence as a standard 2½ story, five-bay-façade mid-19<sup>th</sup> century house, but around 1870 he added a prominent four-and-a-half-story mansard-roof entrance pavilion centered on the façade, prominent dormers, and cresting on the roof; about the same time, John F. Sturdy erected a stylish concave-mansard-roof cottage with elaborate pedimented dormers at 110 Towne Street. More modest examples of French influence may be found in the mansard-roof cottages at 87 and 95 Towne Street. Around 1890 B. Freeman built a fine Queen Anne house

(continued)

United States Department of the Interior  
National Park Service

National Register of Historic Places  
Continuation Sheet

Attleborough Falls HD  
N. Attleborough (Bristol), MA

Section number 8 Page 7

at 317 Mount Hope Street; its complex geometry and elaborate surface treatment are typical of the style. Frederick E. Sturdy also built an elaborate Queen Anne house at 100 Towne Street; by the mid-1920s, however, Victorian architecture was out of style, and his son Frederick E. Sturdy, Jr, and daughter-in-law Amy remodeled the house in the more fashionable Colonial Revival mode.

Twentieth-century architecture is represented by a variety of typical styles and forms. Bungalows came into popularity in the second and third decades of the century, and Alice and Hugo Neuhaus's 1923 house is a fine and well-preserved example. Dutch Colonial houses, reflecting Dutch and German sources found in 17<sup>th</sup>- and 18<sup>th</sup>-century New York and Pennsylvania, were popular in the 1920s and 1930s, and several are within the district: the house that jeweler Frank White and his wife, Florence, built at 347 Mount Hope Street is a particularly interesting example, with a pent roof that circumscribes the first story, a treatment seen in early Pennsylvania architecture; the flared-two-story-gambrel-roof house at 81 Towne Street is the more typical Dutch Colonial form. Several Cape Cod and Ranch houses are typical of mid-20<sup>th</sup> century suburban development. Most unusual, however, is the modest International Style house at 7 Towne Street: the stuccoed wall surface, large corner windows, and wide overhang on its flat roof are characteristics of this style little built in Southern New England.

#### RECENT TRENDS

The district has seen relatively little change since end of the period of significance. It was largely built out by or shortly after that period, when new post-war construction filled in the remaining open lots. Little has been built here since the 1950s. Properties within the district are largely intact, and their preservation is in a relatively good state. Artificial siding has been applied to about 15% of the houses in the district, but its application has fortunately not affected the district's most architecturally significant properties and has generally not occasioned removal of character-defining features. Some of the larger properties have been subdivided for higher density than single-family use. Some houses suffer from minor deferred maintenance. A number of the houses within the district, however, are very well preserved and obviously appropriately maintained on a timely basis. Listing in the National Register of Historic Places and educational efforts toward property owners can only improve the preservation of this district.

#### Archaeological Significance

Since patterns of ancient Native American settlement in North Attleborough are poorly documented, any surviving sites could be significant. While numerous ancient sites have been recorded downstream of the district along the Ten Mile River drainage, many sites lack interpretative information beyond locations.

(continued)

**United States Department of the Interior  
National Park Service**

**National Register of Historic Places  
Continuation Sheet**

**Attleborough Falls HD  
N. Attleborough (Bristol), MA**

Section number   8   Page   8  

---

Many other sites have also been destroyed by industrial, urban and suburban development. Potential sites in the district may enable the opportunity to systematically study site distributions in the Ten Mile River drainage and their cultural and functional variability through time. Ancient Native sites in the district may contain information that defines the role of sites in this area with more densely settled locales between Attleborough Falls and Attleborough Center or other core areas to the south towards Narragansett Bay.

Historic archaeological resources described above have the potential to contribute detailed information on the development of the Attleborough Falls community from a rural agricultural settlement to a suburban neighborhood of an urban/industrial area. Structural evidence and occupational related features may exist from farmsteads no longer extant that contribute important information on Attleborough Falls' rural agricultural phase of community development that no longer survives today. Detailed analysis of the contents from occupational related features at archaeological sites and associated with existing residences that may contribute information on the social, cultural, and economic lives of the districts inhabitants during it's early phase of development. Similar information might also exist associated with 19<sup>th</sup> and early 20<sup>th</sup> century archaeological sites and homes. The latter information may contribute important information on the lives of workers and owners of nearby jewelry factories. Archaeological resources in the district may contribute further architectural and material culture evidence of the distinctive suburban patterns that developed in the district in the mid-19<sup>th</sup> century and continued into the 20<sup>th</sup> century.

(end)

Attleborough Falls HD  
Name of Property

Bristol, MA  
County, State

### 10. Geographical Data

Acreage of Property 42 acres

#### UTM References See continuation sheet.

(Place additional UTM references on a continuation sheet)

1. 19            307740            4648880  
Zone            Easting            Northing

2. 19            308200            4648820  
Zone            Easting            Northing

3. 19            308160            4648560  
Zone            Easting            Northing

4. 19            307720            4648380  
Zone            Easting            Northing

See continuation sheet

#### Verbal Boundary Description

(Describe the boundaries of the property on a continuation sheet.)

#### Boundary Justification

(Explain why the boundaries were selected on a continuation sheet.)

### 11. Form Prepared By

name/title William McKenzie Woodward, consultant, with Betsy Friedberg, MHC, NR Director

organization Massachusetts Historical Commission date November 2003

street & number 220 Morrissey Boulevard telephone 617-727-8470

city or town Boston state MA zip code 02125

#### Additional Documentation

Submit the following items with the completed form:

##### Continuation Sheets

##### Maps

A **USGS map** (7.5 or 15 minute series) indicating the property's location.

A **sketch map** for historic districts and properties having large acreage or numerous resources.

##### Photographs

Representative **black and white photographs** of the property.

**Additional items** (Check with the SHPO or FPO for any additional items)

#### Property Owner

(Complete this item at the request of the SHPO or FPO.)

name multiple

street & number \_\_\_\_\_ telephone \_\_\_\_\_

city or town \_\_\_\_\_ state \_\_\_\_\_ zip code \_\_\_\_\_

**Paperwork Reduction Act Statement:** This information is being collected for applications to the National Register of Historic Places to nominate properties for listing or determine eligibility for listing, to list properties, and to amend existing listings. Response to this request is required to obtain a benefit in accordance with the National Historic Preservation Act, as amended (16 U.S.C. 470 et seq.).

**Estimated Burden Statement:** Public reporting burden for this form is estimated to average 18.1 hours per response including the time for reviewing instructions, gathering and maintaining data, and completing and reviewing the form. Direct comments regarding this burden estimate or any aspect of this form to the Chief, Administrative Services Division, National Park Service, P.O. Box 37127, Washington, DC 20013-7127; and the Office of Management and Budget, Paperwork Reductions Project (1024-0018), Washington, DC 20503.

United States Department of the Interior  
National Park Service

National Register of Historic Places  
Continuation Sheet

Attleborough Falls HD  
N. Attleborough (Bristol), MA

Section number 9/10 Page 1

---

**9. BIBLIOGRAPHY**

- Beers, F.W. *Atlas of Bristol County, Massachusetts*. New York, 1871.  
Daggett, John. *A Sketch of the History of Attleborough, From Its Settlement to the Division*. Boston: Press of Samuel Usher, 1894.  
Evert & Richards. *Atlas of Bristol County, Massachusetts*. Philadelphia, 1895.  
*House Directories*, North Attleborough, MA 1890-1988. Land Evidence Records. Bristol County, MA.  
Massachusetts Historical Commission. Reconnaissance Survey Report, October 1981.  
Walling, Henry F. *Map of Bristol County, Massachusetts*. New York, 1858.

(end)

**10. GEOGRAPHIC DESCRIPTION**

UTM references (cont.) 5. 19 307520 4648400

**VERBAL BOUNDARY DESCRIPTION**

The back lot lines of properties on both sides of Mt. Hope Street from immediately south of Reservoir Street (317 and 318 Mt. Hope St.) to the north lot lines of 408 and 417 Mt. Hope Street and the back lot lines of properties on Towne Street from its intersection with Mt. Hope Street to the Ten Mile River on the north side of the Street and the east lot line of 103 Towne Street on the south. The Ten Mile River, in fact, is the northeast edge of the district, as the back lot lines of houses extend to the river on both Mt. Hope and Towne Streets north and east of the streets' intersection.

**VERBAL BOUNDARY JUSTIFICATION**

The boundary includes a group of 19<sup>th</sup> and 20<sup>th</sup> century houses and their outbuildings on ample lots and excludes later properties and open space that lie adjacent to the resource nominated.

(end)

**United States Department of the Interior  
National Park Service**

**National Register of Historic Places  
Continuation Sheet**

**Attleborough Falls HD  
N. Attleborough (Bristol), MA**

Section number \_\_\_\_\_ Page \_\_\_\_\_

---

**PHOTOGRAPHS**

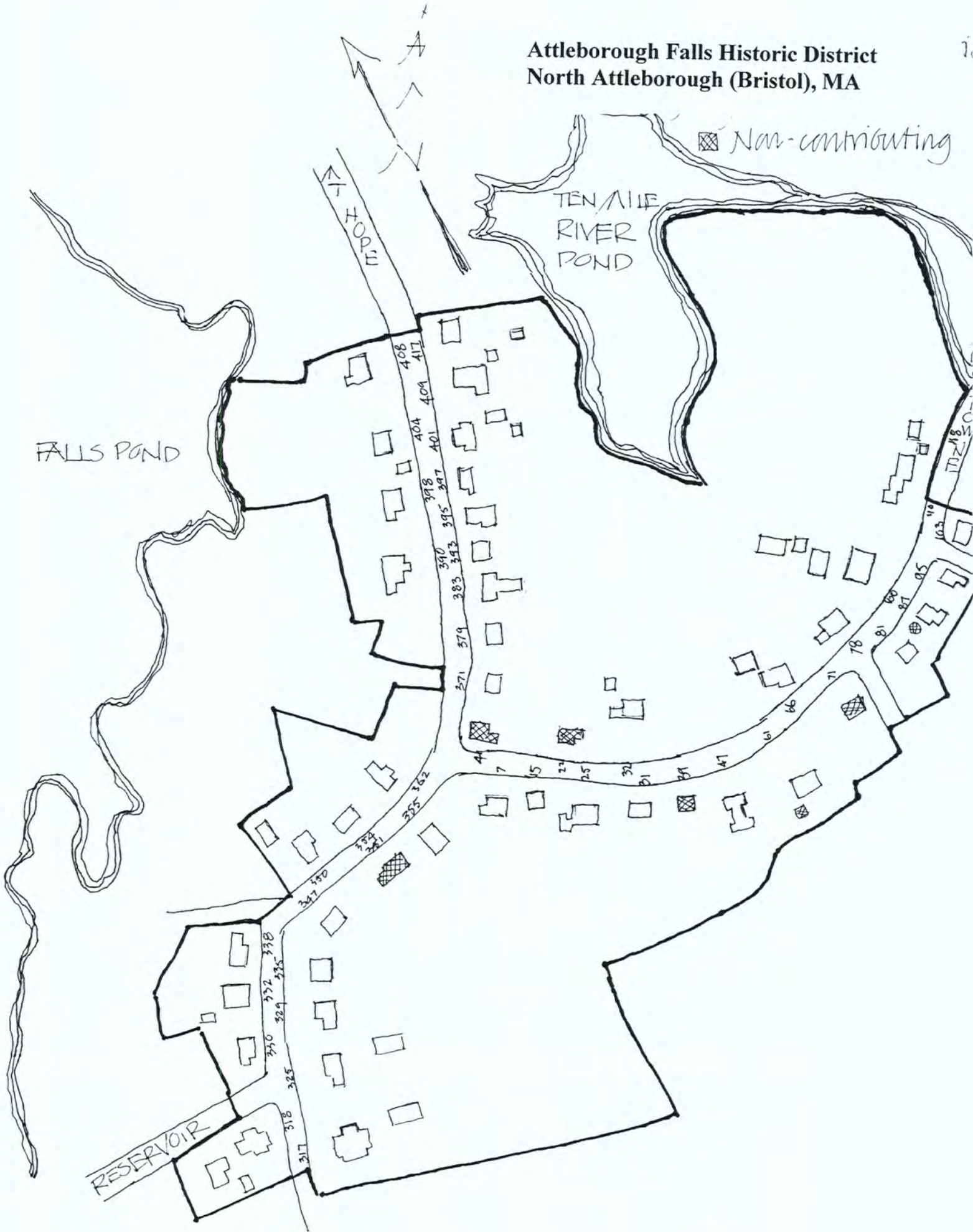
**Photographer: William McKenzie Woodward**

**Date: December 2000**

**Location of negatives: North Attleborough Historical Commission**

1. Mt. Hope Street, view to NE
2. Benjamin S. Freeman House, 390 Mt. Hope Street, view to W
3. Towne Street, view to SE
4. Towne Street, view to SE from no. 25.
5. John F. Sturdy House, 110 Towne Street, view to NW

Attleborough Falls Historic District  
North Attleborough (Bristol), MA



☒ Non-contributing

FALLS POND

TEN MILE RIVER POND

RESERVOIR

RT. 1A

RT. 1A

**ATTLEBOROUGH FALLS HISTORIC DISTRICT  
NORTH ATTLEBOROUGH (BRISTOL), MA**

Map/Lot	Street Address	Name	Date	Style	Type	Status
24/235	317 Mt. Hope Street	Freeman House	ca. 1890	Queen Anne	B	C
		barn	ca. 1890		B	C
24/239	318 Mt. Hope Street	Makinson House	ca. 1890	Queen Anne	B	C
		barn	ca. 1880	Queen Anne	B	C
		office	ca. 1880		B	C
24/236	325 Mt. Hope Street	Follett House	ca. 1875	Italianate, Vernacular	B	C
		barn	ca. 1875		B	C
		shed	ca. 1900		B	C
		stone wall			O	C
24/237	329 Mt. Hope Street	Aldrich House	ca. 1855	Gable-end-and-wing	B	C
14/60	330 Mt. Hope Street	Stanley House	ca. 1790	Colonial/Federal	B	C
		shed	ca. 1920		B	C
14/59	332 Mt. Hope Street	Neuhaus House	ca. 1923	Bungalow	B	C
		garage	ca. 1923		B	C
24/238	335 Mt. Hope Street	House	ca. 1890		B	C
14/58	338 Mt. Hope Street	House	ca. 1850, ca. 1920	Greek Revival, altered	B	C
16/115	347 Mt. Hope Street	White House	ca. 1929	Dutch Colonial	B	C
14/88	350 Mt. Hope Street	House	ca. 1880	Italianate, Vernacular	B	C
		barn	ca. 1880		B	C
16/130	351 Mt. Hope Street	Shockro House	ca. 1952	Ranch	B	C
14/103	354 Mt. Hope Street	Savery House	ca. 1815, 1967	Federal	B	C
16/38	355 Mt. Hope Street	Newell House	ca. 1917	Dutch Colonial	B	C
14/56	362 Mt. Hope Street	Mann House	ca. 1890	Vernacular	B	C
16/39	371 Mt. Hope Street	Briggs House	ca. 1790	Federal	B	C
16/38	379 Mt. Hope Street	House	ca. 1900	Vernacular	B	C
16/42	383 Mt. Hope Street	Dow & Lincoln House	ca. 1850	Greek Revival	B	C
14/55	390 Mt. Hope Street	Freeman House	ca. 1850, ca. 1870	Greek/Ital., 2 <sup>nd</sup> Empire	B	C
16/124	393 Mt. Hope Street	House	ca. 1890	Vernacular	B	C
16/43	395 Mt. Hope Street	Read House	ca. 1850	Greek Gable-end-&-wing	B	C
16/129	397 Mt. Hope Street	Freeman House	ca. 1855	Gothic Revival	B	C

**ATTLEBOROUGH FALLS HISTORIC DISTRICT  
NORTH ATTLEBOROUGH (BRISTOL), MA**

Map/Lot	Street Address	Name	Date	Style	Type	Status
14/54	398 Mt. Hope Street	Freeman House	ca. 1855	Gothic Revival	B	C
16/55	401 Mt. Hope Street	Newell House	ca. 1880	Italianate, Vernacular	B	C
		garages			2B	2C
14/96	404 Mt. Hope Street	Miller House	ca. 1941	Cape Cod	B	C
		garage	ca. 1960		B	NC
14/53	408 Mt. Hope Street	Diamond House	ca. 1948	Ranch	B	C
16/120	409 Mt. Hope Street	House	ca. 1855	Gable-end-&-wing	B	C
16/56	417 Mt. Hope Street	Tillinghast House	ca. 1850	Vernacular	B	C
		garage	ca. 1940		B	C
16/140	4 Towne Street	Sturdy House	ca. 1954	Cape Cod	B	NC
16/37	7 Towne Street	Alexander House	ca. 1954	International	B	NC
16/110	15 Towne Street	Eklund House	ca. 1925	Bungalow	B	C
16/40	22 Towne Street	Stanley House	ca. 1973	Ranch	B	NC
16/123	25 Towne Street	House	ca. 1820	Federal	B	C
16/36	31 Towne Street	Jones House	ca. 1950	Cape Cod	B	C
		garage	ca. 1950		B	C
16/41	32 Towne Street	Briggs House	ca. 1870	Gothic Revival	B	C
		shed	ca. 1900		B	C
16/113	39 Towne Street	Bailey House	ca. 1850	Greek Revival	B	C
16/35	47 Towne Street	Dawson House	ca. 1955	Ranch	B	NC
16/127	61 Towne Street	House	ca. 1830	Federal/Greek Revival	B	C
		shed	ca. 1960		B	NC
16/44	66 Towne Street	Shepardson House	ca. 1875	Italianate, Vernacular	B	C
		barn	ca. 1875	Vernacular	B	C
16/128	71 Towne Street	Peasley House	ca. 1952	Cape Cod	B	C
16/45	78 Towne Street	Neuhaus House	ca. 1880	Vernacular	B	C
16/59	81 Towne Street	House	ca. 1930	Dutch Colonial	B	NC

**ATTLEBOROUGH FALLS HISTORIC DISTRICT  
NORTH ATTLEBOROUGH (BRISTOL), MA**

Map/Lot	Street Address	Name	Date	Style	Type	Status
16/33	87 Towne Street	Cummings House	ca. 1880	Mansard Cottage	B	C
		gazebo	ca. 1990		B	NC
16/32	95 Towne Street	House	ca. 1880	Mansard Cottage	B	C
16/46	100 Towne Street	Sturdy House	1880s, 1920s	Colonial Revival	B	C
		garage	20 <sup>th</sup> C.		B	C
		barn	20 <sup>th</sup> C.		B	C
		cottage	20 <sup>th</sup> C.		B	C
16/31	103 Towne Street	Cheever House	ca. 1880	Vernacular	B	C
		garage	ca. 1930		B	C
16/118	110 Towne Street	Sturdy House	ca. 1870	Second Empire	B	C
		landscape	1870 <i>et seq.</i>		Si	C
		garage	mid 20 <sup>th</sup> C.		B	C
16/48	118 Towne Street	House	ca. 1850	Vernacular	B	C
		shed	ca. 1920		B	C
<b>TOTALS</b>		<b>62 contributing buildings</b>	<b>1 contributing site</b>	<b>1 contributing object</b>		
		<b>8 noncontributing buildings</b>				

UNITED STATES DEPARTMENT OF THE INTERIOR  
NATIONAL PARK SERVICE

NATIONAL REGISTER OF HISTORIC PLACES  
EVALUATION/RETURN SHEET

REQUESTED ACTION: NOMINATION

PROPERTY Attleborough Falls Historic District  
NAME:

MULTIPLE  
NAME:

STATE & COUNTY: MASSACHUSETTS, Bristol

DATE RECEIVED: 11/24/03      DATE OF PENDING LIST: 12/16/03  
DATE OF 16TH DAY: 1/01/04      DATE OF 45TH DAY: 1/07/04  
DATE OF WEEKLY LIST:

REFERENCE NUMBER: 03001372

REASONS FOR REVIEW:

APPEAL: N DATA PROBLEM: N LANDSCAPE: N LESS THAN 50 YEARS: N  
OTHER: N PDIL: N PERIOD: N PROGRAM UNAPPROVED: N  
REQUEST: N SAMPLE: N SLR DRAFT: Y NATIONAL: N

COMMENT WAIVER: N

ACCEPT     RETURN     REJECT    1/6/04 DATE

ABSTRACT/SUMMARY COMMENTS:

RECOM./CRITERIA accept AEC

REVIEWER Patrick Anders      DISCIPLINE Historian

TELEPHONE \_\_\_\_\_      DATE 1/6/2004

DOCUMENTATION see attached comments Y/N see attached SLR Y/N



Attleborough Falls Historic District  
North Attleborough, Massachusetts  
Mt Hope Street, view to northeast  
Will McKenzie Woodward, Photographer  
December 2000

No 1 of 5

Negative, North Attleborough Historical Commission



Attleborough Falls Historic District  
North Attleborough, Massachusetts  
Benjamin Stanley Freeman House, 390  
At Hope Street, view to west

VIII McKenzie Woodward, Photographer  
December 2008

No 2 of 5

Negative, North Attleborough Historical  
Commission



Attleborough Falls Historic District  
North Attleborough, Massachusetts

Tanne Street, view to southeast

Wm McKenzie Woodward, Photographer

December 2000

No 3 of 5

Negative, North Attleborough Historical Commission



Attleborough Falls Historic District  
North Attleborough, Massachusetts  
Tanne Street, view to southeast from No 25  
Wm McKenzie Woodward, Photographer  
December 2000

No 4 of 5  
Negative, North Attleborough Historical Commission

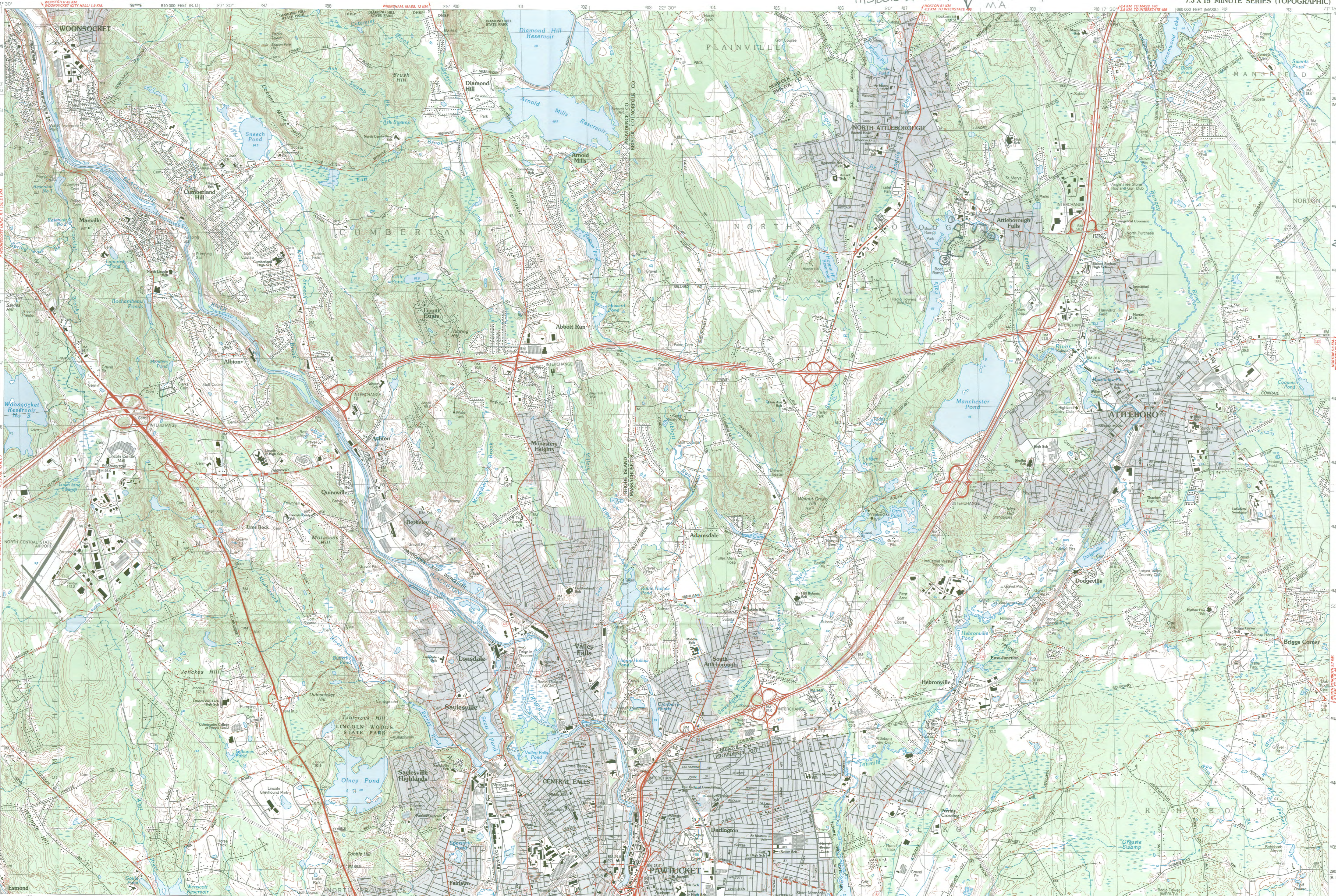


Attleborough Falls Historic District  
North Attleborough, Massachusetts  
John F. Sturdy House, 110 Tame Street,  
view to northwest

Wm McKenzie Woodford, Photographer  
September 2000

No 5 of 5

Negative, North Attleborough Historical  
Commission



**Attleboro**  
NORTH ATTLEBOROUGH, MA  
RHODE ISLAND, MA  
1:25 000-scale metric  
topographic map



7.5 X 15 MINUTE QUADRANGLE  
SHOWING

- Contours and elevations in meters
- Highways, roads and other manmade structures
- Water features
- Woodland areas
- Geographic names



Produced by the United States Geological Survey in cooperation with Massachusetts Department of Public Works  
 Control by USGS, NOS/NOAA, Commonwealth of Massachusetts and State of Rhode Island agencies  
 Compiled by photogrammetric methods from aerial photographs taken 1981. Field checked 1982. Map edited 1987.  
 This area is also covered by 7.5-minute 1:24 000-scale maps: Pawtucket 1975 and Attleboro 1964  
 Projection and 1000-meter grid, zone 19  
 Universal Transverse Mercator  
 10,000-foot grid ticks based on Massachusetts coordinate system, mainland zone, and Rhode Island coordinate system 1927 North American Datum  
 To place on the predicted North American Datum 1983, move the projection lines 6 meters south and 41 meters west as shown by dashed corner ticks  
 There may be private landholdings within the boundaries of the National or State reservations shown on this map

CONTOUR INTERVAL 3 METERS  
 NATIONAL GEODETIC VERTICAL DATUM OF 1929  
 CONTROL ELEVATIONS SHOWN TO THE NEAREST 0.1 METER  
 OTHER ELEVATIONS SHOWN TO THE NEAREST 0.5 METER

THIS MAP COMPLIES WITH NATIONAL MAP ACCURACY STANDARDS

Meters	Feet
1	3.2808
2	6.5617
3	9.8425
4	13.1234
5	16.4043
6	19.6852
7	22.9661
8	26.2470
9	29.5279
10	32.8088

To convert meters to feet multiply by 3.2808  
 To convert feet to meters multiply by 0.3048

Declination	UTM grid convergence (100 000 meter distance)
0°	0.000
1°	0.000
2°	0.000
3°	0.000
4°	0.000
5°	0.000
6°	0.000
7°	0.000
8°	0.000
9°	0.000
10°	0.000

UTM grid convergence (100 000 meter distance) Diagram (MM) Diagram is approximate

Adjoining Maps	1	2	3
1	1	2	3
2	4	5	6
3	7	8	9
4	10	11	12
5	13	14	15
6	16	17	18
7	19	20	21
8	22	23	24
9	25	26	27
10	28	29	30

1. Uxbridge  
 2. Franklin  
 3. Brockton  
 4. Georgetown  
 5. Taunton  
 6. North Scituate  
 7. Providence  
 8. Somers

ISBN 0-607-00752-4  
9 780607 007524

Topographic Map Symbols

- Primary highway, hard surface
- Secondary highway, hard surface
- Light-duty road, hard or improved surface
- Unimproved road, trail
- Road marker: Interstate, U.S. State
- Railroad: standard gage; narrow gage
- Bridge; drawbridge
- Footbridge; overpass; underpass
- Ballup area: only selected landmark buildings shown
- House; barn; church; school; large structure
- Boundary: National, with monument; State; County, parish; Civil township, precinct, district; Incorporated city, village, town; National or State reserved land; Land grant with monument; found section corner; U.S. public lands survey: range, township; section; Range, township; section line: location approximate; Fence or field line; Power transmission line, location tower; Dam; dam with lock; Cemetery, grave; Cemeteries, grave; Cemeteries, plot area; U.S. location monument; Well; water well; spring; Windmill; water wheel; windmill; Mine shaft; prospect; adit or cave; Control: horizontal station; vertical station; spot elevation; Contours: index; intermediate; supplementary; depression; Distorted surface: strip mine, levee, sand; Bathymetric contours: index, intermediate; Perennial lake and stream; intermittent lake and stream; Rapids; large and small; falls, large and small; Submerged marsh, marsh, swamp; Land subject to controlled inundation; woodland; Scrub; mangrove; Orchard; vineyard

A pamphlet describing topographic maps is available, on request  
 FOR SALE BY U.S. GEOLOGICAL SURVEY  
 P.O. BOX 25286, DENVER, COLORADO 80225

RECEIVED

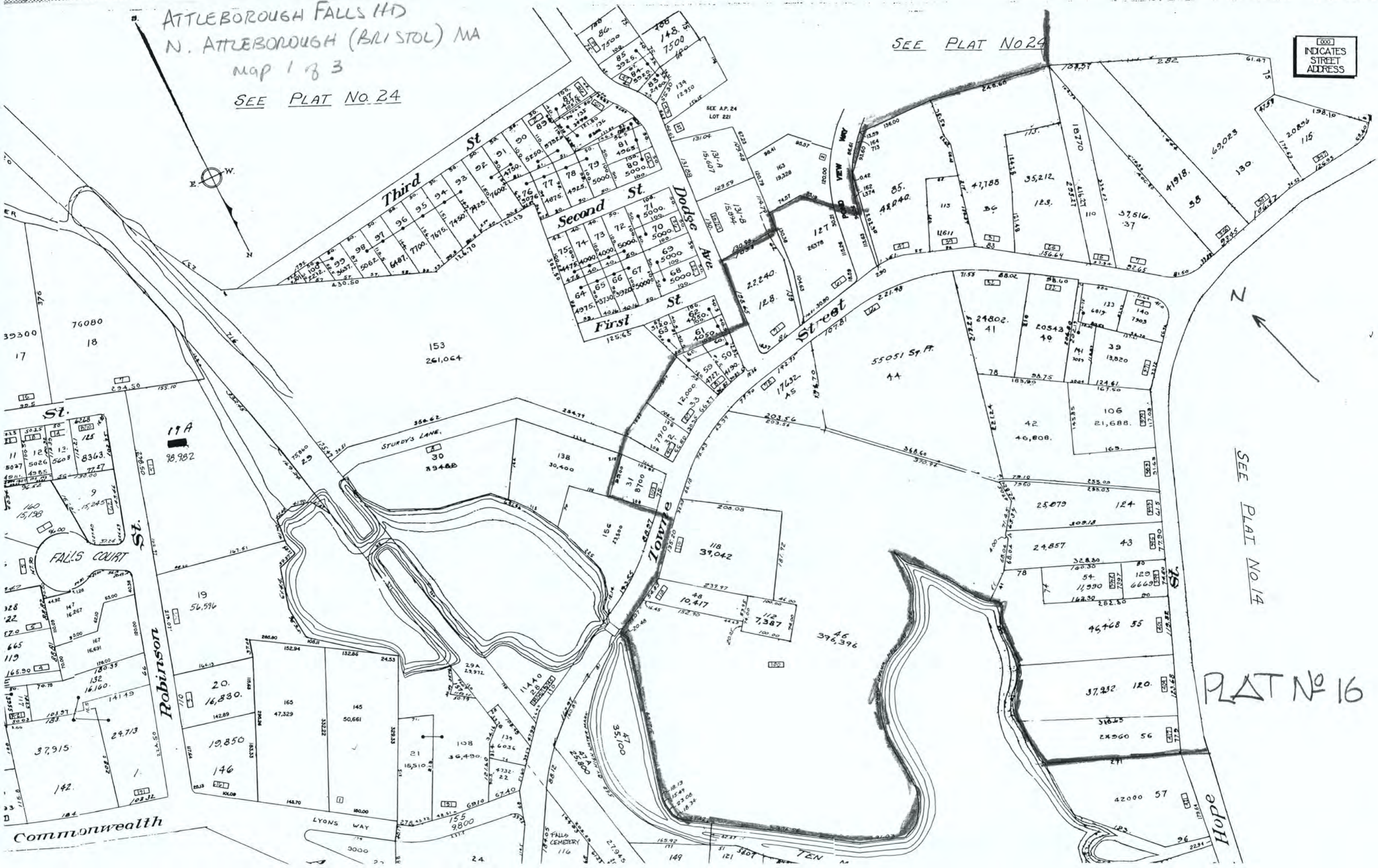
JUN 28 2002

MASS. HIST. COMM

ATTLEBOROUGH FALLS HD  
N. ATTLEBOROUGH (BRISTOL) MA  
Map 1 of 3  
SEE PLAT NO. 24

SEE PLAT NO 24

INDICATES STREET ADDRESS



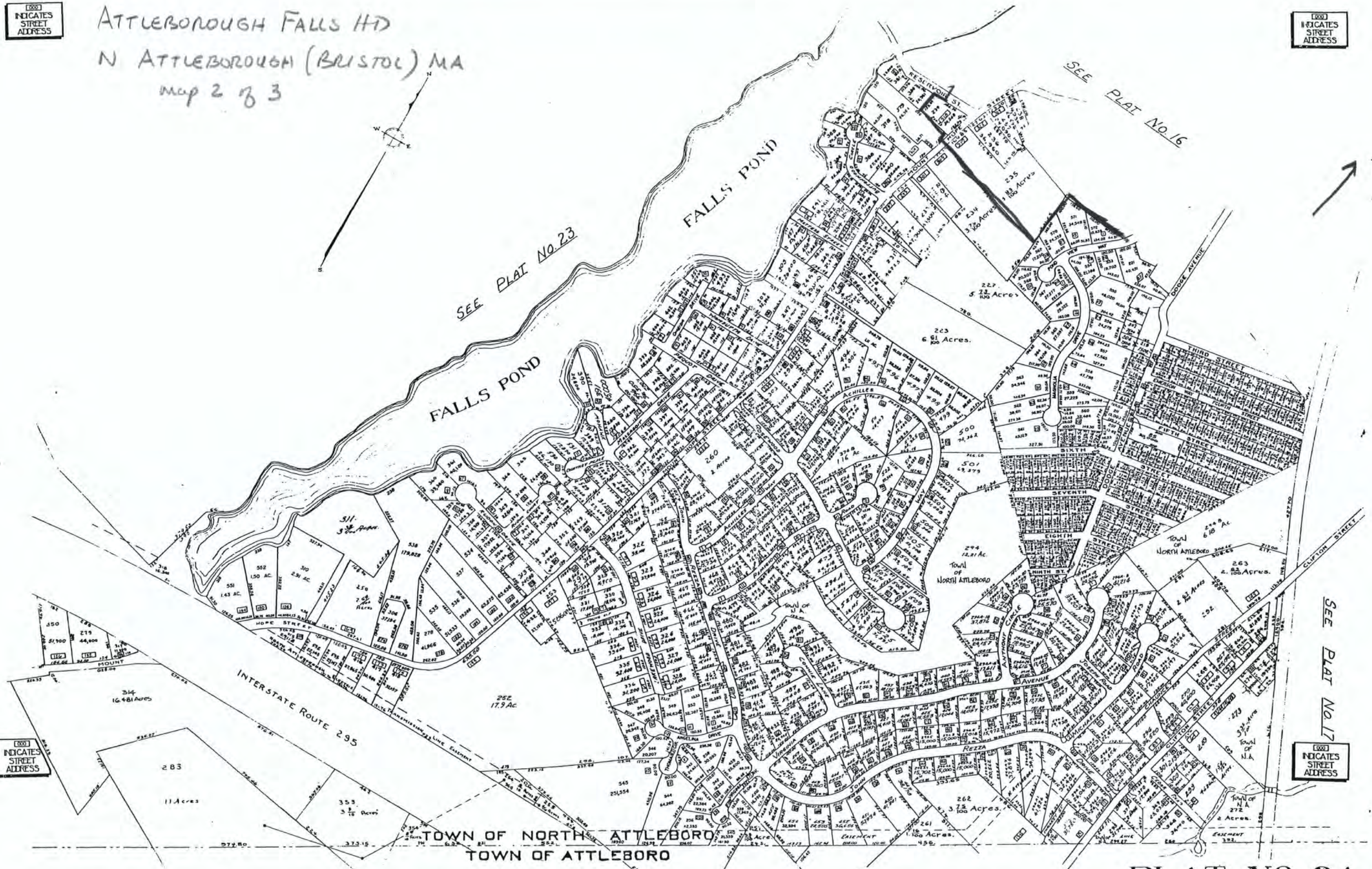
SEE PLAT NO 14

PLAT NO 16

INDICATES STREET ADDRESS

INDICATES STREET ADDRESS

ATTLEBOROUGH FALLS HD  
N ATTLEBOROUGH (BRISTOL) MA  
map 2 of 3



SEE PLAT No. 23

SEE PLAT No. 16

SEE PLAT No. 17

INDICATES STREET ADDRESS

INDICATES STREET ADDRESS

TOWN OF NORTH ATTLEBORO  
TOWN OF ATTLEBORO

PLAT NO. 24

INDICATES STREET ADDRESS

ATTREBOROUGH FALLS HD  
N. ATTREBOROUGH (BRISTOL) MA  
MAY 3 8 3

SEE PLAT NO. 16

INDICATES STREET ADDRESS

SEE PLAT

NO. 24

SEE PLAT NO. 15

SEE PLAT NO. 13

Elm Street



FALLS POND



SEE PLAT NO. 12

PLAT NO. 14

INDICATES STREET ADDRESS

ATTLEBOROUGH FALLS (H)

N. ATTLEBOROUGH (BRISTOL) MA



**The Commonwealth of Massachusetts**  
William Francis Galvin, Secretary of the Commonwealth  
Massachusetts Historical Commission

November 10, 2003

Ms. Carol Shull  
National Register of Historic Places  
Department of the Interior  
National Park Service  
1201 Eye Street, NW, 8<sup>th</sup> floor  
Washington, DC 20005

Dear Ms. Shull:

Enclosed please find the following nomination form:

Attleborough Falls HD, North Attleborough (Bristol), MA

The nomination has been voted eligible by the State Review Board and has been signed by the State Historic Preservation Officer. The owners of the properties included in the district were notified of pending State Review Board consideration 30 to 45 days before the meeting and were afforded the opportunity to comment.

Sincerely,

A handwritten signature in cursive script that reads "Betsy Friedberg".

Betsy Friedberg  
National Register Director  
Massachusetts Historical Commission

enclosure

cc: Wm. McKenzie Woodward, Consultant  
John C. Rhyno, Board of Selectmen  
Donald Johnson, Planning Board  
Robert Ashton, North Attleborough Historical Commission  
Doris Neal, North Attleborough Historical Commission