



FARMHOUSE  
BROMAN FARMSTEAD  
KANDIYOHI TWP., KANDIYOHI CO., MN  
C10694-10

Farmhouse

BROMAN, ANDREAS & JOHANNA & ANNA & FRANK E. Farmstead

Kandiyohi Twp (vic. of Kandiyohi) MN

Scott Kelly

Dec. 89

MN HIST. SOC., 690 CEDAR ST., A.V. DEPT., ST PAUL, MN 55101

South east

#1



Farmhouse  
Broman Farmstead  
Kandiyohi Twp., Kandiyohi Co., MN  
010694-6

Farm house

016694-6

Broman, Andreas & Johanna & Frank E. Farmstead

Kandiyohi Twp. (vic of Kandiyohi) MN

Scott Kelly

Dec 89

A.U. Dept., MN Hist Soc., 690 Cedar St., ST PAUL, MN 55101

EAST

#1



Farmhouse  
BROMAN FARMSTEAD  
KANDIYOHİ TWP., KANDIYOHİ CO., MN  
010694-3

Farmhouse

010694-3

Broman, Andreas & Johanna & Anna & Frank E. Farmstead

Kandiyohi Twp (vic. of Kandiyohi) MN

Scott Kelly

Dec 89

A.V. Dept., MN Hist Soc., 690 Cedar St., ST Paul, MN 55101

North

#1



Farmhouse and CORNER  
Broman Farmstead  
Kandiyohi Twp., Kandiyohi Co., MN  
010694-19

left: Farm House (1)

010694-19

Right: CORNER 1b (6)

BROMAN, ANDREAS ; JOHANNIA ; ANNA ; FRANK E., Farmstead

Kandiyohi Twp (vic of Kandiyohi) MN

Scott Kelly

Dec 89

A.U. Dept., MN Hist Soc., 690 Cedar St., ST PAUL, MN 55101

South east

#s 1 ; 6





Poultry Shed and Barn  
Broman Farmstead  
Kandiyohi Twp, Kandiyohi Co., MN

010694-16

left: Poultry Shed (4)

610694-16

Right: Barn (3)

Broman, Andrews & Johanna & Anna & Frank E. Farmstead

Kandiyohi Twp (vicinity of Kandiyohi) MN

Scott Kelly

December 89

A.U. Dept., MN HIST. SOC., 690 Cedar St., ST PAUL, MN 55101

North east

#s 4 & 3



BARN AND GRANARY  
BROMAN FARMSTEAD  
KANDIYOHİ TWP., KANDIYOHİ CO., MN  
010694-17

010694#17

Right: GRANARY (2)

middle: BARN (3)

Left: Doultry shed (4)

Broman, Andreas & Johanna & Anna & Frank E, Farmstead

Kandi yohi Twp (vic of Kandiyohi) MN

Scott Kelly

Dec 89

A.U. Dept, MN Hist. Soc., 690 Cedar St, ST PAUL, MN 55101

North east

#s 2, 3 & 4



BARN, SILO, and GRAVARY  
BROMAN Farmstead  
Kandiyohi Twp., Kandiyohi Co., MN  
010694-8

010694-8

BARN: Silo (3)

Granary (2)

Broman, andreas & Johanna & Anna & Frank E. Farmstead

Kandiyohi Twp (vicinity of Kandiyohi) MN

Scott Kelly

Dec 89

A.U. Dept, MN Hist Soc, 690 Cedar St., ST PAUL, MN 55101

NORTH

#3 3 1/2



CORNCRIB  
BROMAN Farmstead  
Kandiyohi Twp., Kandiyohi Co., MN  
010694-9

CORN CRIB

610694-9

Broman, Andreas & Johanna & Anna & Frank E. Farmstead

Kandiyohi Twp (vicinity of Kandiyohi) MN

Scott Kelly

Dec 89

A. U. Dept, MN Hist Soc., 690 Cedar St., ST PAUL, MN 55101

Southwest

#6





Privy  
Bromard Farmstead  
Kandiyohi Twp, Kandiyohi Co, MN  
010694 - 2

Privy

010694-2

Broman, Andreas † Johanna † Anna † Frank E. Farmstead

Kandiyohi Twp (vic of Kandiyohi) MN

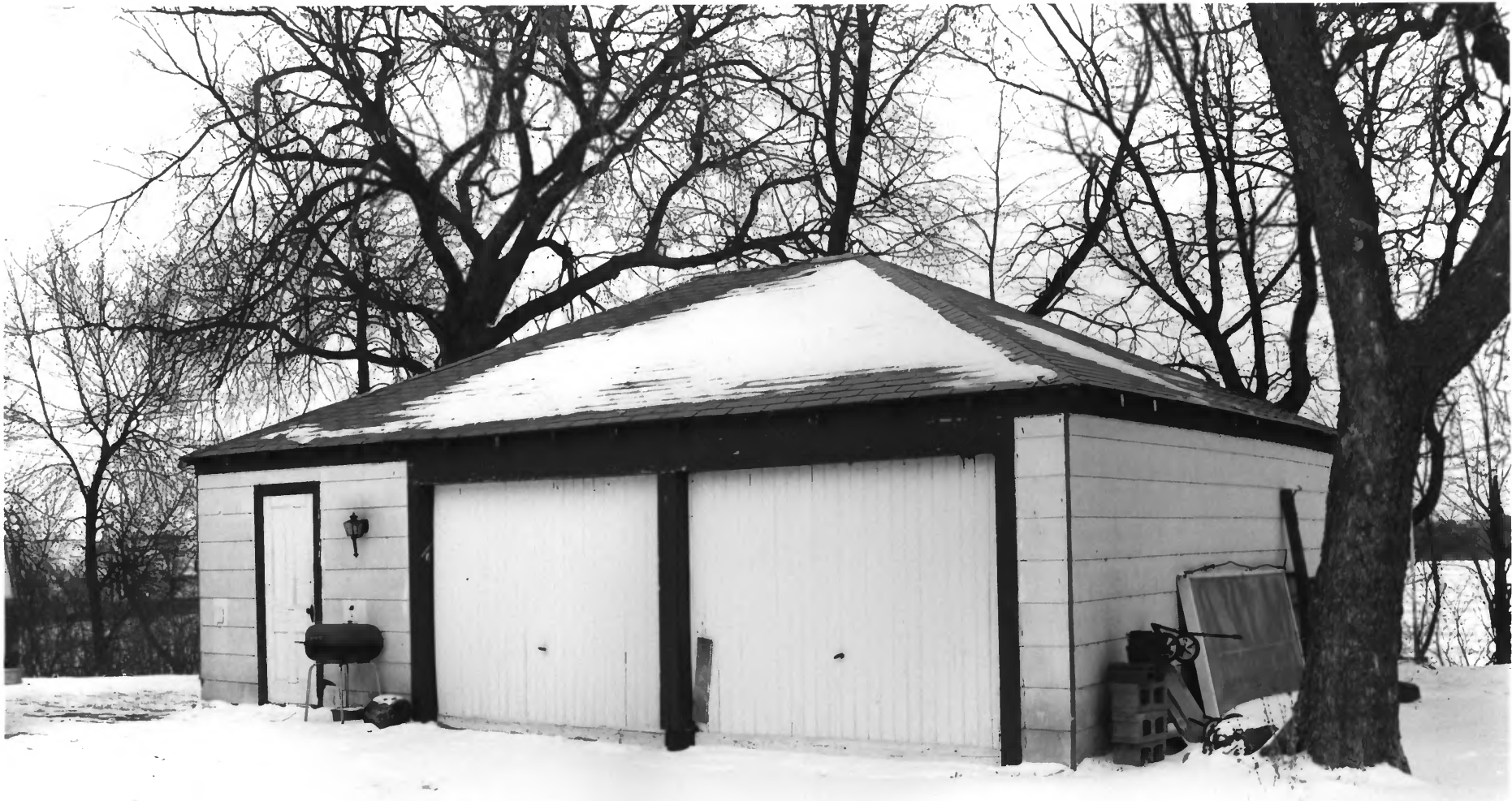
Scott Kelly

Dec 89

A.V. Dept., MN Hist. Soc. 690 Cedar St., St. Paul, MN 55101

North

#7



GARAGE

Broman Farmstead

Kandiyohi Twp., Kandiyohi Co., MN

010694-4

Garage

610694-4

Broman, Andreas & Johanna & Anna & Frank E. Farmstead

Kandiyohi Twp (vic of Kandiyohi) MN

Scott Kelly

Dec 89

A.U. Dept., MN HIST SOC., 690 Cedar St., ST PAUL, MN  
55101

North east

#8



HOG Shed Foundation  
Broman Farmstead  
Kandiyohi Twp, Kandiyohi Co., MN  
010694-18

Hog Shed Foundation

010694-18

Broman, Andreas & Johanna & Frank E & Anna Farmstead

Kandiyohi Twp (vic of Kandiyohi) MN

Scott Kelly

Dec 89

A. U. Dept., MN Hist Soc, 690 Cedar St., ST PAUL, MN 55101

East

#5



Dryout Depression

Broman, Andreas and Johanna and Frank E. and Anna Farmstead

Kandiyohi Township, Minnesota (vicinity of Kandiyohi)

Scott Kelly

Jan. 1990

Negative: Minnesota SHPO, Ft. Snelling History Center, ST PAUL, MN 55111

Facing N

Sketch Map #: 9





Farmhouse

Broman, Andreas and Johanna and Frank E. and Anna Farmstead

Kandiyohi Township, Minnesota (vicinity of Kandiyohi)

Photographer Unknown

Date of photo: 1895

Negative: Myrtle Broman, Willmar, Minnesota

Facing SE. Broman Family and John Lindquist family in front of house. Anna Broman second from left (in hat). Johanna Broman 5<sup>th</sup> adult from left (seated). Andreas Broman 6<sup>th</sup> adult from left (seated). Frank E. Broman 5<sup>th</sup> from right (light suit). Bent tree in foreground still standing.

Sketch Map # : 1



Farmhouse

Broman, Andreas and Johanna and Frank E. and Anna Farmstead

Kandiyohi Township, Minnesota (vic. of Kandiyohi)

Photographer Unknown

Date: 1904 or 1905

Negative - unknown

Facing SE. Photograph taken for inclusion in Lawson, Victor Illustrated History of Kandiyohi County (1905) by photographer accompanying Lawson. (Was not included in published version of book.) Two dominant elm trees in front of house are still standing.

Sketch map # 1



View of boat in Kasota Lake

Broman, Andreas and Johanna and Frank E. and Anna Farmstead  
Kandiyohi Township, Minnesota (vicinity of Kandiyohi)

Photographer Unknown

Date: Circa 1895-1900

Negative: unknown

Photo taken from shore immediately east of house. Kasota Lake facing SE.

Frank Broman at right.



View from Farmhouse

Broman, Andreas and Johanna and Frank E and Anna Farmstead

Kandiyohi Township, Minnesota (vic. of Kandiyohi)

Photographer Unknown

Date: circa 1895-1900

Negative unknown

View of Kasota Lake from west facade of farmhouse. Looking southeast. Broman children in boats. Ruel F. Broman in stern of left boat.