

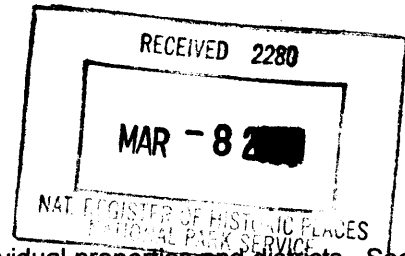
240

MAR 04 2004

NPS Form 10-900
(Rev. 10-90)

OMB No. 1024-0018

United States Department of the Interior
National Park Service



NATIONAL REGISTER OF HISTORIC PLACES REGISTRATION FORM

This form is for use in nominating or requesting determinations for individual properties and districts. See instructions in How to Complete the National Register of Historic Places Registration Form (National Register Bulletin 16A). Complete each item by marking "x" in the appropriate box or by entering the information requested. If any item does not apply to the property being documented, enter "N/A" for "not applicable." For functions, architectural classification, materials, and areas of significance, enter only categories and subcategories from the instructions. Place additional entries and narrative items on continuation sheets (NPS Form 10-900a). Use a typewriter, word processor, or computer, to complete all items.

1. Name of Property

historic name **Epworth School**
other names/site number **Epworth Elementary School**

2. Location

street & number: 310 West Main Street, P. O. Box 434 not for publication N/A
city or town Epworth vicinity N/A
state Iowa code IA county Dubuque code 061 zip code 52045-0434

3. State/Federal Agency Certification

As the designated authority under the National Historic Preservation Act of 1986, as amended, I hereby certify that this X nomination request for determination of eligibility meets the documentation standards for registering properties in the National Register of Historic Places and meets the procedural and professional requirements set forth in 36 CFR Part 60. In my opinion, the property X meets does not meet the National Register Criteria. I recommend that this property be considered significant nationally statewide X locally.

(See continuation sheet for additional comments.)

Howell J. Sate March 6, 2004
Signature of certifying official Date

STATE HISTORICAL SOCIETY OF IOWA
State or Federal agency and bureau

In my opinion, the property meets does not meet the National Register criteria.

(See continuation sheet for additional comments.)

Signature of commenting or other official Date

State or Federal agency and bureau

United States Department of the Interior
National Park Service

Property Name: **Epworth School**
County and State: **Dubuque County, Iowa**

4. National Park Service Certification

I, hereby certify that this property is:

entered in the National Register

Edson H. Beall

See continuation sheet.

determined eligible for the National Register

See continuation sheet.

determined not eligible for the National Register

removed from the National Register

other (explain): _____

[Signature]

Signature of Keeper

4/21/04

Date of Action

5. Classification

Ownership of Property (Check as many boxes as apply)

- private
- public-local
- public-State
- public-Federal

Category of Property (Check only one box)

- building(s)
- district
- site
- structure
- object

Number of Resources within Property

Contributing	Noncontributing
<u>1</u>	<input type="checkbox"/> buildings
<input type="checkbox"/>	<input type="checkbox"/> sites
<input type="checkbox"/>	<input type="checkbox"/> structures
<input type="checkbox"/>	<input type="checkbox"/> objects
<u>1</u>	<input type="checkbox"/> Total

Number of contributing resources previously listed in the National Register: 0

Name of related multiple property listing (Enter "N/A" if property is not part of a multiple property listing.)
N/A

United States Department of the Interior
National Park Service

Property Name: **Epworth School**
County and State: **Dubuque County, Iowa**

6. Function or Use

Historic Functions (Enter categories from instructions)

Cat: EDUCATION Sub: SCHOOL

Current Functions (Enter categories from instructions)

Cat: RECREATION AND CULTURE MUSEUM

7. Description

Architectural Classification (Enter categories from instructions)

LATE VICTORIAN Sub: ROMANESQUE
LATE 19TH AND 20TH CENTURY REVIVALS Sub: COLONIAL REVIVAL

Materials (Enter categories from instructions)

foundation CONCRETE
roof SYNTHETICS Sub: RUBBER
walls BRICK
other STONE Sub: LIMESTONE

Narrative Description (Describe the historic and current condition of the property on one or more continuation sheets.)

United States Department of the Interior
National Park Service

Property Name: **Epworth School**
County and State: **Dubuque County, Iowa**

8. Statement of Significance

Applicable National Register Criteria (Mark "x" in one or more boxes for the criteria qualifying the property for National Register listing)

- A Property is associated with events that have made a significant contribution to the broad patterns of our history.
- B Property is associated with the lives of persons significant in our past.
- C Property embodies the distinctive characteristics of a type, period, or method or construction or represents the work of a master, or possesses high artistic values, or represents a significant and distinguishable entity whose components lack individual distinction.
- D Property has yielded, or is likely to yield information important in prehistory or history.

Criteria Considerations (Mark "X" in all the boxes that apply.)

- A owned by a religious institution or used for religious purposes
- B removed from its original location
- C a birthplace or a grave
- D a cemetery
- E a reconstructed building, object, or structure
- F a commemorative property
- G less than 50 years of age or achieved significance within the past 50 years

Areas of Significance (Enter categories from instructions)

EDUCATION
ARCHITECTURE

Period of Significance

1918

Significant Dates

1918

Significant Person (Complete if Criterion B is marked above)

N/A

Cultural Affiliation

N/A

Architect/Builder

NETCOTT, HARRY EAMES

MILLER, JOHN G.

Narrative Statement of Significance (Explain the significance of the property on one or more continuation sheets.)

United States Department of the Interior
National Park Service

Property Name: **Epworth School**
County and State: **Dubuque County, Iowa**

9. Major Bibliographical References

(Cite the books, articles, and other sources used in preparing this form on one or more continuation sheets.)

Previous documentation on file (NPS)

- preliminary determination of individual listing (36 CFR 67) has been requested
- previously listed in the National Register
- previously determined eligible by the National Register
- designated a National Historic Landmark
- recorded by Historic American Buildings Survey # _____
- recorded by Historic American Engineering Record # _____

Primary Location of Additional Data

- State Historic Preservation Office
- Other State agency
- Federal agency
- Local government
- University
- Other

Name of repository: Epworth Community Historical Society

10. Geographical Data

Acreage of Property: 1.41 acres

UTM References (Place additional UTM references on a continuation sheet)

	Zone	Easting	Northing	Zone	Easting	Northing
1	<u>15</u>	<u>669771</u>	<u>4701161</u>	3	_____	_____
2	_____	_____	_____	4	_____	_____

See continuation sheet.

Verbal Boundary Description (Describe the boundaries of the property on a continuation sheet.)

Boundary Justification (Explain why the boundaries were selected on a continuation sheet.)

United States Department of the Interior
National Park Service

Property Name: **Epworth School**
County and State: **Dubuque County, Iowa**

11. Form Prepared By

name/title Donna L. Silker/Treasurer
organization Epworth Community Historical Society date August 14, 2003
street & number 310 West Main Street, P.O. Box 434 telephone (563) 876-3760
city or town Epworth state Iowa zip code 52045-0434

Additional Documentation

(Submit the following items with the completed form.)

Continuation Sheets

Maps: A USGS map (7.5 or 15 minute series) indicating the property's location.
A sketch map for historic districts and properties having large acreage or numerous resources.

Photographs: Representative black and white photographs of the property.

Additional items (Check with the SHPO or FPO for any additional items)

Property Owner

(Complete this item at the request of the SHPO or FPO.)

name City Of Epworth
street & number 212 North Center Avenue, P.O. Box 266 telephone (563) 876-3320
city or town Epworth state Iowa zip code 52045-0266

Paperwork Reduction Act Statement: This information is being collected for applications to the National Register of Historic Places to nominate properties for listing or determine eligibility for listing, to list properties, and to amend existing listings. Response to this request is required to obtain a benefit in accordance with the National Historic Preservation Act, as amended (16 U.S.C. 470 et seq.).

Estimated Burden Statement: Public reporting burden for this form is estimated to average 18.1 hours per response including the time for reviewing instructions, gathering and maintaining data, and completing and reviewing the form. Direct comments regarding this burden estimate or any aspect of this form to the Chief, Administrative Services Division, National Park Service, P.O. Box 37127, Washington, DC 20013-7127; and the Office of Management and Budget, Paperwork Reductions Project (1024-0018), Washington, DC 20503.

United States Department of the Interior
National Park Service

NATIONAL REGISTER OF HISTORIC PLACES CONTINUATION SHEET

Section 7 Page 1

Name of Property: **Epworth School**
County and State: **Dubuque County, Iowa**

DESCRIPTION SUMMARY (Historic and Current Condition)

The Epworth School built in 1917 which fronts south onto West Main Street is the sole building on 1.41 acres located in a long-time residential district two blocks west of the city's commercial downtown. The school is a two-story, grade and high school building with a nominally rectangular plan approximately 55 feet deep by 80 feet wide. An exterior concrete courtyard facing south in front of the building connects to the sidewalk with grass playground areas flowing to the east, north and west of the structure to a tennis court and baseball field. A 1930 Rock Island caboose is on display to the northeast in an adjoining lot. The Epworth School replaced a two-story brick schoolhouse built in 1867 following the creation of the Independent School District of Epworth.

This building incorporates a variety of decorative elements including carved stone bands and inlays, manipulation of brick color and bond pattern, recessed and projecting brick bands, and brick diaper work. The relatively small plan size of the building, combined with its two and one half story height, give the building an impression of verticality, enforced by the alignment of window openings, offsets in the facades, and parapetted rather than overhung wall terminations. The general verticality of the building massing is offset by horizontal elements including the limestone banding at the window sills of each level, recessed brick courses at the ground level creating a rusticated effect, projecting brick courses associated with the window heads at the first and second floors, and a corbelled brick band at the cornice topped by projecting headers in a diamond diaper work pattern. Stone inlays define the corners of the wings flanking the entrance portico and anchor the spring lines of the gabled parapets, and they are generally enhanced by red brick borders. The color scheme of the building is primarily brown brick tempered by red brick in the fields, with grey limestone highlights outlined by red brick borders. The exterior is largely intact with the exception of window replacements dating from the 1950's, external fire escapes, a small vestibule addition on the east secondary facade of the building, and the removal of parapets from the secondary facades.

There is an entrance on each of the building's four sides, with one leading to the boiler room on the north, a small vestibule entry to the east lunchroom, an emergency exit on the west and a main entrance portal to the south, which opens to a grand stairwell to the first floor.

A primary east-west corridor splits the plan with support functions to the front (south) and classrooms on to the rear (north). The front support areas form symmetrical wings that flank each side of the entrance portico and advance from the rear classroom mass with inset sidewalls punctuated only by windows at the end of the corridor on each level. At the basement level a cast-in-place concrete boiler room projects to the rear of the building with a few risers up to an at-grade service door. Hot forced heat was installed prior to 1953 with boiler room changes in 1965. The ground floor provided access to bleachers for a two-story high basement gymnasium with associated dressing rooms and toilets below the bleachers. The bleachers were removed and a ground level floor system was installed in their place; however, the gymnasium space and associated areas remain. At ground level is a lunchroom and kitchen to the east with a small classroom to the southwest. Slate chalkboards remain on the original walls in a small classroom on the second floor to the south originally used as an art room. The central classroom to the north on this floor, which served as an assembly room with a raised stage, including dressing rooms in the stage wings, survives to this day but was divided with a non-bearing wall creating two smaller classrooms with one dressing room converted into a storage area. The majority of the original oak trim, doors and transoms remain with additional bathrooms added on the first floor. Classroom walls were painted over numerous times with floor tile and carpeting also added after 1953.

United States Department of the Interior
National Park Service

NATIONAL REGISTER OF HISTORIC PLACES CONTINUATION SHEET

Section 8 Page 2

Name of Property: **Epworth School**
County and State: **Dubuque County, Iowa**

SIGNIFICANCE SUMMARY

The Epworth School (Epworth Elementary School) began classes January 1918 and is locally significant (under Criterion A) as it is associated with the development of the first public high school educational facility in Epworth, Iowa. This school was a likely result of the state's 1911 legislation, which allowed children of families who were unable to afford private high school tuition the opportunity to complete their education. The school satisfied the educational needs of the town for over eighty years. On September 10, 1962 it was converted into an elementary school for grades K-6 with a total enrollment of 280. May 30, 2003 marked the last day for classes in the 86-year-old building.

The school building is also significant (under Criterion C) as the building design is a mixture of various styles including Romanesque and Neo-Colonial, and marks a transition from late 19th century Victorian decorative styles to the less ornate modern architectural styles of the 20th century. The general configuration and features of the building are consistent with other projects by the same architect, Harry Eames Netcott of Independence, Iowa, who specialized in schools with his son Roland Netcott. They sought school commissions and became known for their schools, which were built in Independence, Jesup, Rockwell City, Oelwein, Reinbeck, Postville and other cities.

The Epworth School, unlike many school buildings that were built in the early 1900's, was in continued use as a school until the spring of 2003. It has stood the test of time, the test of the weather elements, and the test of children. It has survived in a society that believes that it is cheaper and easier to tear down old buildings, rather than retain and maintain them.

RESOURCE HISTORY AND HISTORIC CONTEXT

One of the first thoughts of every community of pioneer settlers in Iowa was to provide a schoolhouse for their children. In 1848 the first schoolhouse was established one mile southeast of Epworth on land owned by Joseph Kidder. A man named Lambert served as the teacher for all of the children in the area. Several years later a change was made in the location when the building was sold. In the spring of 1855, County school affairs began to take shape and expand. The first public school opened its doors in the village of Epworth in December of 1857. It occupied the upper floor of the building on Main Street then known as Dodson's store and had an attendance of 97 pupils that year. Mr. E.G. French taught the students along with his assistant Miss. M. Webster.

The School remained over Dodson's store for almost two years when it then moved to the Presbyterian Church basement located on West Main Street. This school was under the direction of Mr. L.R. Brown, a graduate of West Point.

In 1858 the Iowa legislature passed a law placing schools under a State Superintendent who worked through local Superintendents who visited schools annually. Mr. Otis Briggs was the first School Director under the law. As a result of this education bill, the Independent School District of Epworth was created.

A new two-story brick schoolhouse accommodating grades one through eight was constructed on West Main Street and completed in the spring of 1868 at a total cost of \$5,000. The school was under direction of a Board of Trustees. There were eight members including S.F. Squires, President and J.E. Sanborn, Secretary.

United States Department of the Interior
National Park Service

NATIONAL REGISTER OF HISTORIC PLACES CONTINUATION SHEET

Section 8 Page 3

Name of Property: **Epworth School**
County and State: **Dubuque County, Iowa**

RESOURCE HISTORY AND HISTORIC CONTEXT continued

The public school included primary and grammar departments in 1880, had the services of two teachers at an annual expense of \$500 and had an average daily attendance of sixty pupils. The School Board was comprised of F.M Kirkpatrick, President; F. Reynor, M.D., Secretary; T.I. Briggs and Joseph Fogg, Trustees. Many teenagers graduated from eighth grade and went on to work on the farm or at other jobs; others continued their education at the Epworth Seminary, which was a private high school where tuition costs were high.

With the incorporation of the Town of Epworth in 1880, the citizens had an enthusiasm and dedication to build a "good and wholesome community for themselves and posterity". By 1913, electricity lit the town. In the same year, a municipal water system was installed. New factories were started, including a typewriter manufacturer, a broom handle and baseball bat making company. In 1910, the Epworth News, a weekly newspaper was born. The population of Epworth was 520 people and a new school was needed to satisfy the educational needs of the town.

Iowa Legislators in 1911 assured every student in Iowa access to a high school education, by requiring school districts that did not maintain a high school to pay tuition for their students to attend in a different district. Due to this legislation, the Epworth school board was compelled to begin plans for the first public high school. On May 7, 1917 a special school election, of the Independent School District of Epworth, to pass a bond proposition was held for the purpose of issuing bonds in the sum of \$30,000 for the purpose of constructing, equipping and purchasing grounds for a two story and basement brick grade and high school building. The bond issue passed and a notice to contractors for sealed proposals was posted. Bids were to be submitted first on the building proper including the electrical work, and second on the heating and plumbing in accordance with plans and specs furnished by Harry Eames Netcott, School House Architect of Independence, Iowa. Bids for the Epworth School were received but on May 31st, no contract was let because no bid was low enough to come within the available budget. Apparently negotiations ensued that allowed construction to begin in July of 1917, three months after the United States formally entered World War I.

A local newspaper announced that John G. Miller, contractor had the job of erecting the new public school building and the Epworth Hardware, Coal and Lumber Company crews began excavating for the new schoolhouse just west of the old school building built in 1868. Work on the building went well and by October W. Hansen, a tinner from Waterloo put on the new roof. The heating system was installed by a Des Moines firm and the plumbing by Schueth Bros. of Dyersville. The building was completed and occupied by students attending first through tenth grades on January 14, 1918.

An auction sale of school buildings was held on March 30th and the two-story brick schoolhouse built in 1867 was sold to Frank Edwards for \$105. Dedication of the new public grade and high school was held on May 3, 1918. F.A. Welch, State Inspector of High Schools gave the address for the evening. In November 1919, Mr. C.B. Hanna, Secretary of the Board of Education, received the certificate of approval for the school being placed on the accredited list of high schools from the State Department of Education.

In the spring of 1920, Epworth School's first graduating class of four received high school diplomas and began their trek on the road of life.

Consolidation of the many school districts was considered for many years. Efforts to begin the process, which were cut short by the Great Depression and World War II, resumed in 1950.

United States Department of the Interior
National Park Service

NATIONAL REGISTER OF HISTORIC PLACES CONTINUATION SHEET

Section 8 Page 4

Name of Property: **Epworth School**
County and State: **Dubuque County, Iowa**

RESOURCE HISTORY AND HISTORIC CONTEXT continued

The Iowa Legislature required teachers to have a college degree, districts to have facilities meeting certain standards, and the consolidation of all one-room schools into a district with a high school. In 1957, all areas in Iowa were required to be included in a twelve-graded public school district having at least three hundred pupils. By 1968, all rural schools in Dubuque County had been consolidated into either the "Dubuque Community School District" or the "Western Dubuque County Community School District". The creation of the Western Dubuque County Community School District was approved by the voters on June 16, 1960 and activated on July 1, 1960, from fifty-one dissolved districts. Geographically the largest school district in the State of Iowa, it has an area of 555 square miles and draws students from western Dubuque County as well as from Delaware, Jones and Jackson counties. The enrollment at the time was 579 students in kindergarten through eighth grade and 133 in ninth through twelfth. There were forty-three teachers and two administrators. The first Board of Education for the new district was elected on July 6th, 1960. The Class of 1961 consisting of 26 students was the last to receive high school diplomas at the old Epworth School on West Main Street. On September 10 1962 the Epworth School was converted into an elementary school for grades K-6.

The end of an era in Epworth came on May 30, 2003, the last day for classes at the 86-year-old school. The old Epworth Public High School has retained its integrity and character throughout the years with minor alterations. A new era has begun as the City of Epworth takes possession and begins the restoration process.

ARCHITECTURAL INFORMATION

The Epworth School building designed by Harry E. Netcott is a mixture of various styles including Romanesque and Neo-Colonial, and marks a transition from the fussier late 19th century Victorian decorative styles to the less ornate Beaux-Arts style of the early 1900s, to an even more simplified and refined style of the modern architecture of the 20th century.

There are significant decorative elements incorporated into the Epworth School building: however, there is less ornamentation relative to earlier Netcott designs. In general, this is illustrative of the trend towards less ornament in 20th century buildings; however, it could also be due to pragmatic considerations, such as negotiations to bring the project within construction budget, or re-allocation of resources for the war effort. The original design drawings are not currently available, and may be lost, so it is difficult to determine if there were significant deviations from Netcott's original design. This building is of a smaller scale from Netcott's more significant works among them the best known being those at Independence, Rockwell City, Oelwein, Reinbeck, and Postville; however the exterior is largely intact with the exception of window replacements dating from the 1950's, external fire escapes, a small vestibule addition on the east secondary facade of the building, and the removal of parapets from the secondary facades. The general massing of the school is similar to one of Netcott's earlier works the Postville High School built in 1914, rigidly symmetrical with a projecting central entrance portico capped by parapetted walls and an inaccessible "balcony" at the second floor level. The main entrance consists of a double door with a large Venetian-style fan window above, framed by a heavy Romanesque carved limestone arch. The spring line of the arch extends around the building as a decorative limestone band that incorporates the first floor windowsills and is repeated at the second floor windowsills and around the ground floor water table. A central monumental stair core rises behind the entrance portico, recessed slightly from the flanking wings above the second floor. The stair, alternates between split narrow runs and wide central runs with mid-level switchback landings, a Romanesque technique reminiscent of the rhythm established by the Spanish Steps in Rome. The primary building mass is terminated by parapet walls that rise to three gabled peaks on the primary facade. Originally, gable parapets also rose above the classroom window groupings on the east and west secondary facades, however, they did not survive. Bands of double hung rectangular windows set symmetrically beneath each gables parapet and separated by narrow brick mullions are characteristic of Neo-Colonial influence.

United States Department of the Interior
National Park Service

NATIONAL REGISTER OF HISTORIC PLACES CONTINUATION SHEET

Section 8 Page 5

Name of Property: **Epworth School**
County and State: **Dubuque County, Iowa**

RESOURCE HISTORY AND HISTORIC CONTEXT continued

ARCHITECTURAL INFORMATION

Harry Eames Netcott was selected as architect of the new Epworth School in 1917. He was born in Taunton, England, as was his father George Jr. The father, who was a mason in England, immigrated with his wife, Matilda, and his family to the United States in 1872, and soon located in Independence, Iowa. He worked as a mason and in 1880 established the George Netcott Brick Yards. One of his buildings the Fisher-Plane Commercial Building in Independence, was added to the National Register of Historic Places in 1997.

Harry Netcott, after studying at Lennox College at Hopkinton and Cornell College at Mount Vernon, went on to the Polytechnic Institute in Chicago, although there is some discussion that he "had no formal training in the profession of architecture" according to John S. Bartley, who knew Mr. Netcott in later years. In 1893, Harry Netcott married Carrie South of Hopkinton, Iowa, and the couple proceeded to have four children.

Mr. Netcott opened an architectural practice in Parkersburg, Iowa in 1883, and designed many buildings including the late Victorian style house belonging to Charles Wolf in Parkersburg, which is on the National Register. In the year 1895 he advertised his ability to design "Business Buildings, School Houses, Court Houses, Residences, Churches and Hotels". A local county history biography (1914) states Netcott "is especially widely know as the designer and architect of many schools, giving special attention to that class of building. He had designed schools all over the state, among the best known being those at Independence, Rockwell City, Oelwein, Reinbeck, and Postville. He has also drawn the plans for many of the best buildings in this section of the state including the two new banks at Monticello. Beauty of the design goes hand in hand with convenience of arrangement and thoroughness of construction in the execution of his work and he ranks today with the leading architects of the state."

During the two years that Harry Netcott practiced his craft in Parkersburg, he also opened an office in Independence, Iowa. He continued working from that office until 1916. Leaving Independence, Harry Netcott, with his son Roland Netcott, opened the architectural firm of Netcott and Netcott in Waterloo around 1918, although few buildings in that city are attributed to them. The firm closed when the 1927 registration law went into effect. This law stated that all architects must be registered in the state of Iowa. He may have left because of what the new law said about how architects could collect their fees. According to John S. Bartley, Harry recalled in his later years "that he had a hard time collecting even one per cent from the owner for a fee, but that it was customary to squeeze what money he could from the suppliers of materials or equipment".

Harry E. Netcott, who turned sixty in 1927, went to work as a draftsman in Waterloo. Netcott's problem with making a living as an architect at the beginning of a new century offers us insight to the plight facing Iowa architects as they struggled to establish their profession.

Beginning in the 1890s through the 1920s, the classical Beaux-Arts building style was in vogue. Harry E. Netcott went against the trend, designing many of his buildings in a plainer style that gave a solid "midwest" feel. Two of his best-known works, the Classical revival Maquoketa Free Library and the Colonial revival Dr. Judd Shellito house are still in use today.

United States Department of the Interior
National Park Service

**NATIONAL REGISTER OF HISTORIC PLACES
CONTINUATION SHEET**

Section 8 Page 6

Name of Property: **Epworth School**
County and State: **Dubuque County, Iowa**

RESOURCE HISTORY AND HISTORIC CONTEXT continued

Since original floor plans are not currently available and may be lost, much of the discussion regarding changes and alterations came from memories of students who formerly attended school here.

Currently the City of Epworth is in the initial planning stages of making the building handicap accessible, reviewing options for future renovations, establishing uses, and assisting with nominating the Epworth School for National Register listing. The Epworth Community Historical Society moved into the school building on October 16, 2003 with plans to convert the second floor into a historical museum for visitors to travel to the past to learn of the lives of their forefathers.

United States Department of the Interior
National Park Service

NATIONAL REGISTER OF HISTORIC PLACES CONTINUATION SHEET

Section 9 Page 7

Name of Property: **Epworth School**
County and State: **Dubuque County, Iowa**

MAJOR BIBLIOGRAPHICAL REFERENCES

Ede, Mausser, Schwendinger, Simon. History of Epworth, Iowa. Gorsuch Scarisbrick Publishers, Dubuque, Iowa 1976

Shank, Wesley I. Iowa's Historic Architects: A Biographical Dictionary. University of Iowa Press, Iowa City, Iowa 1999

Oldt, Franklin T. Editor-in-Chief. History of Dubuque County Iowa Vol.2 Illustrated 977.7 Old Goodspeed Historical Association Chicago

Gebhard, David and Mansheim 1999 Gerald. Buildings of Iowa.

The History of Dubuque County, Iowa 1880. Chicago: Western Historical Company

Lyon, Randolph. Faith and Fortunes An Encyclopedia of Dubuque County 1998 Flynn Printing and Graphics, Dubuque, Iowa

Netcott, Harry E. (Architect's File) State Historic Preservation Office, Des Moines, IA

Balmer, Ronald A. P.E., S.E. IIW Engineers & Surveyors, P.C. Dubuque, Iowa

Miller, William R. P.E, S.E. Durrant Group Dubuque, Iowa

Beyer, William G. Epworth, Iowa, 1953 Epworth School Graduate

Erdmann, Laverne Epworth, Iowa, 1950 Epworth School Graduate

Hamilton, Thomas J. Epworth, Iowa, 1945 Epworth School Graduate

Meeker, Ardrith A. Dubuque, Iowa, 1946 Epworth School Graduate

Schwendinger, John W. Epworth, Iowa, 1936 Epworth School Graduate

Wilgenbusch, Willis J., Epworth, Iowa, 1956 Epworth School Graduate

Dyersville Commercial. Issues: April 26, 1917, July 19, 1917, November 15, 1917, December 6, 1917, January 3, 1918, January 10, 1918 "The opening of the new Epworth Public School was postponed for a week owing to the fact that the new building was not ready. School will open January 14."

Farley Advertiser. Issues: April 5, 1917, May 31, 1917, June 21, 1917, July 12, 1917, February 28, 1918, May 2, 1918

School Site and Building Bonds June 1, 1917 Independent School District of Epworth (\$30,000 approved at a special school election on May 17, 1917; \$14,000 original bonds located at Farley-Drexler Middle School, Farley Iowa)

Telegraph Herald May 1, 1918 microfilm located at Carnegie-Stout Public Library for Epworth: "New School Dedicated "Dedication for new school dedication to be held on May 3, 1918"

United States Department of the Interior
National Park Service

**NATIONAL REGISTER OF HISTORIC PLACES
CONTINUATION SHEET**

Section 9 Page 8

Name of Property: **Epworth School**
County and State: **Dubuque County, Iowa**

MAJOR BIBLIOGRAPHICAL REFERENCES continued

Internet Research - www.nationalregisterofhistoricplaces.com
National Register of Historic Places, Buchanan County, Iowa
Postville Public School National Register Nomination, Postville, Allamakee County

United States Department of the Interior
National Park Service

**NATIONAL REGISTER OF HISTORIC PLACES
CONTINUATION SHEET**

Section 10 Page 9

Name of Property: **Epworth School**
County and State: **Dubuque County, Iowa**

GEOGRAPHICAL DATA – Preliminary & Final Plat

Verbal Boundary Description – Lot 1-1-149

The nominated property (Lot 1-1-149) occupies a rectangular parcel in the City of Epworth bounded by West Main Street on the south; Lot 2-1-149 and 3rd Avenue N.W. on the west, Lot 1-1 and Lot 2-1 on the north and Lot 2-149 on the East.

6105-99

6105-99

Kathy Flynn Thurlow

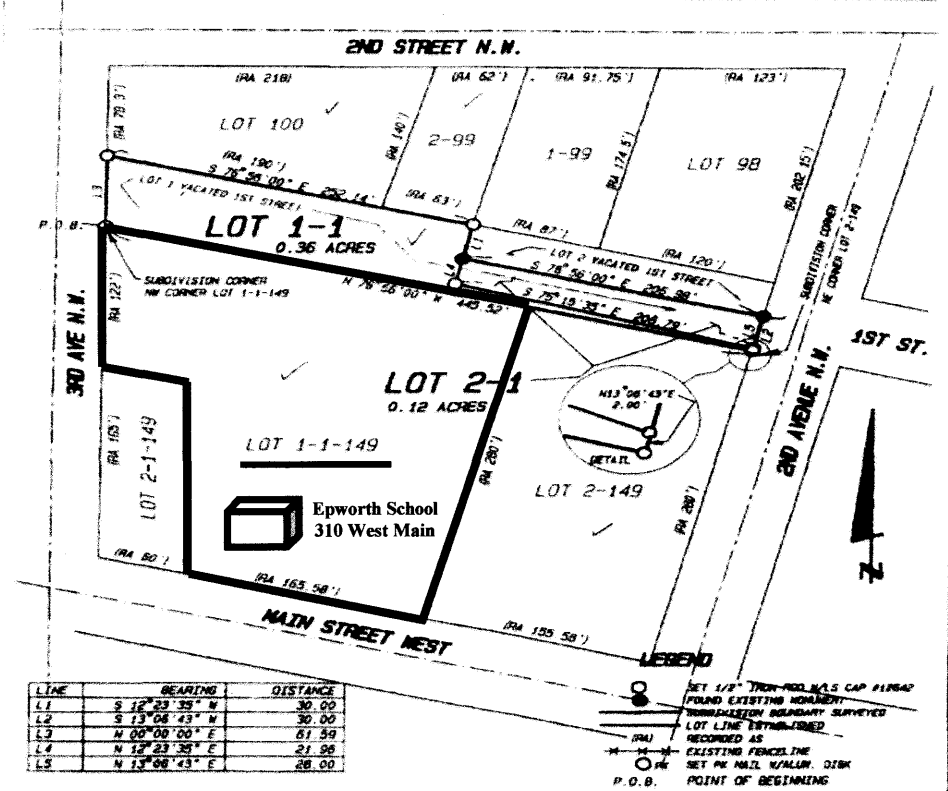
99 APR 12 PM 2:28
KATHY FLYNN THURLOW
COUNTY RECORDER
DUBUQUE CO., IOWA

2100

PREPARED BY BILL BURGER OF WM. BURGER LANDSURVEYORS 510 3RD ST. WEST COURT, NORTHINGTON, IOWA 52078 (319) 855 2028

FLAT OF SURVEY LOT 1-1 AND LOT 2-1 A DIVISION OF LOT 1 OF VACATED 1ST STREET N.W. IN THE CITY OF EPWORTH, DUBUQUE COUNTY, IOWA

PRELIMINARY & FINAL PLAT



SCALE 1" = 100' DATE OF SURVEY: 6/22/98 7/21/98 SHEET 1 OF 4



PROPRIETORS: WESTERN DUBUQUE COMMUNITY SCHOOL DISTRICT
I HEREBY CERTIFY THAT THIS LANDSURVEYING DOCUMENT WAS PREPARED AND RELATED SURVEY WORK HAS BEEN PERFORMED BY ME OR UNDER MY DIRECT PERSONAL SUPERVISION AND THAT I AM A DULY LICENSED LAND SURVEYOR UNDER THE LAWS OF THE STATE OF IOWA. MY LICENSE RENEWAL DATE IS DECEMBER 31, 1999.
William H. Burger 12/20/98
WILLIAM H. BURGER DATE

Ms. Burger
Land Surveyors
510 3rd Street West Court
Northington, Iowa 52078

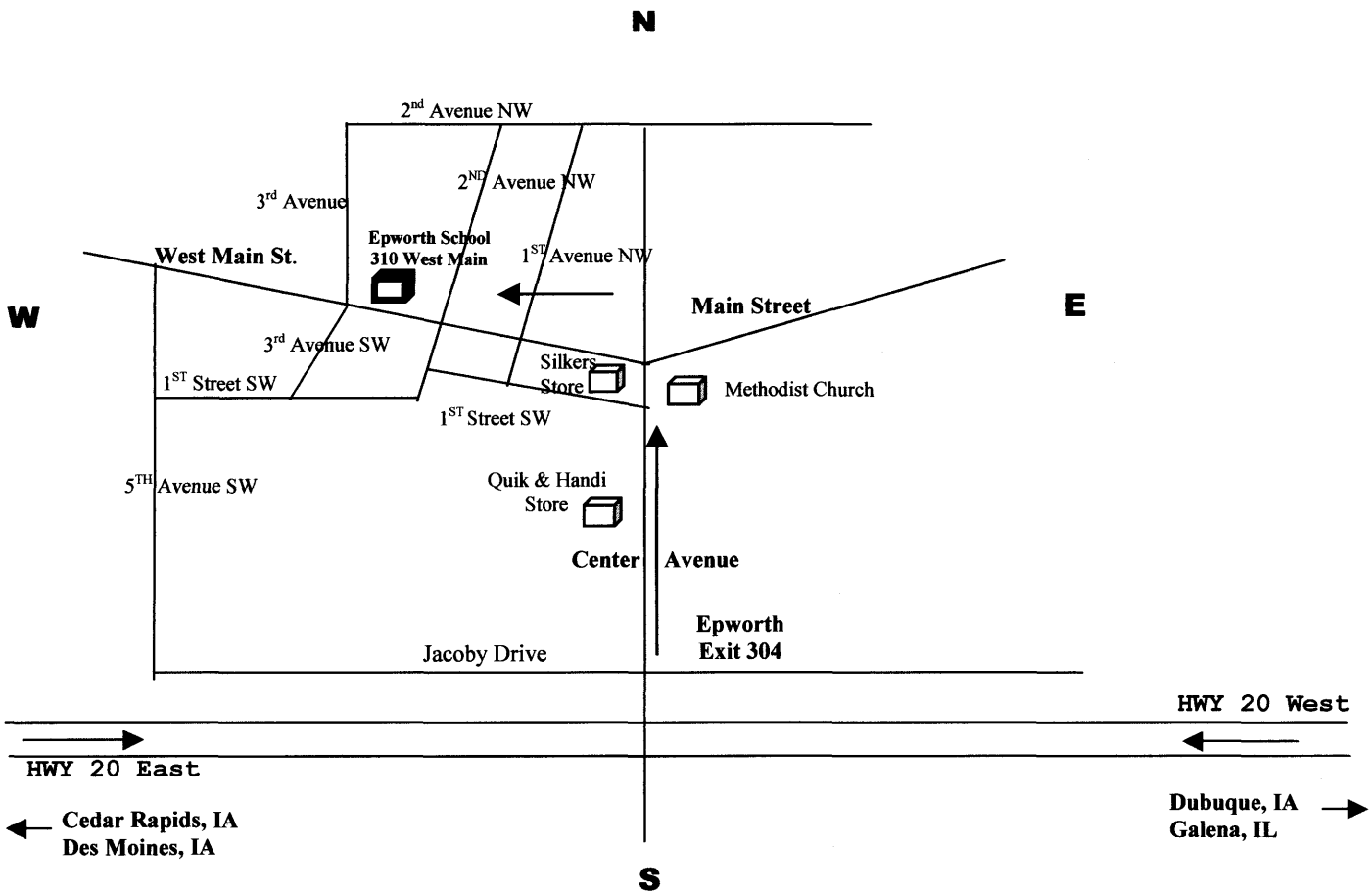
United States Department of the Interior
National Park Service

NATIONAL REGISTER OF HISTORIC PLACES CONTINUATION SHEET

Section 10 Page 10

Name of Property: **Epworth School**
County and State: **Dubuque County, Iowa**

GEOGRAPHICAL DATA – Site Map
Donna L. Silker
Epworth, Iowa
November 5, 2003



United States Department of the Interior
National Park Service

**NATIONAL REGISTER OF HISTORIC PLACES
CONTINUATION SHEET**

Section 10 Page 11

Name of Property: **Epworth School**
County and State: **Dubuque County, Iowa**

Boundary Justification

The nominated property includes Lot 1-1-149 historically associated with the school.

United States Department of the Interior
National Park Service

NATIONAL REGISTER OF HISTORIC PLACES CONTINUATION SHEET

Section Photos Page 12

Name of Property: **Epworth School**
County and State: **Dubuque County, Iowa**

The following items apply to all photographs:

Property Name: Epworth School
Location: Epworth, Dubuque County, Iowa
Photographer: Becwar Photography
David Becwar
Dates of Photographs: January 2003
Location of Negatives: Becwar Photography
2155 Coates Street
Dubuque, Iowa 52003

Individual Photograph Identifications:

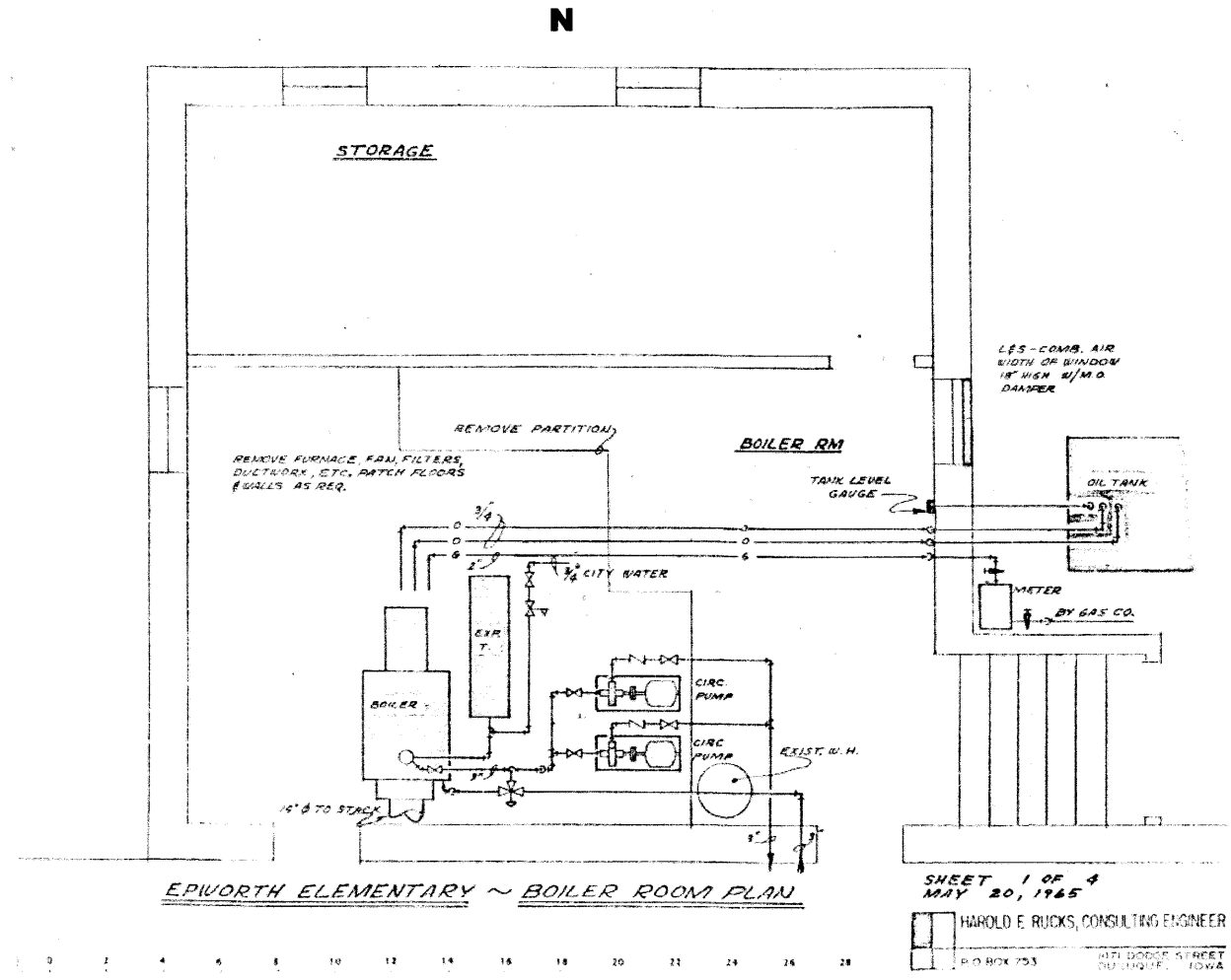
1. Overall view, looking north
2. Overall view, looking south by northwest
3. Overall view, looking west by northwest
4. Overall view, looking east by west
5. View of entrance portico looking south
6. View of central monumental stair core rising behind entrance portico to the first floor looking north
7. View of first floor hallway looking east with transoms part of door construction
8. View of southwest stairwell to second floor
9. View of second floor classroom with raised stage, including dressing rooms in the stage wings, which originally served as an auditorium

United States Department of the Interior
National Park Service

NATIONAL REGISTER OF HISTORIC PLACES CONTINUATION SHEET

Section Floor Plans Page 13

Name of Property: **Epworth School**
County and State: **Dubuque County, Iowa**



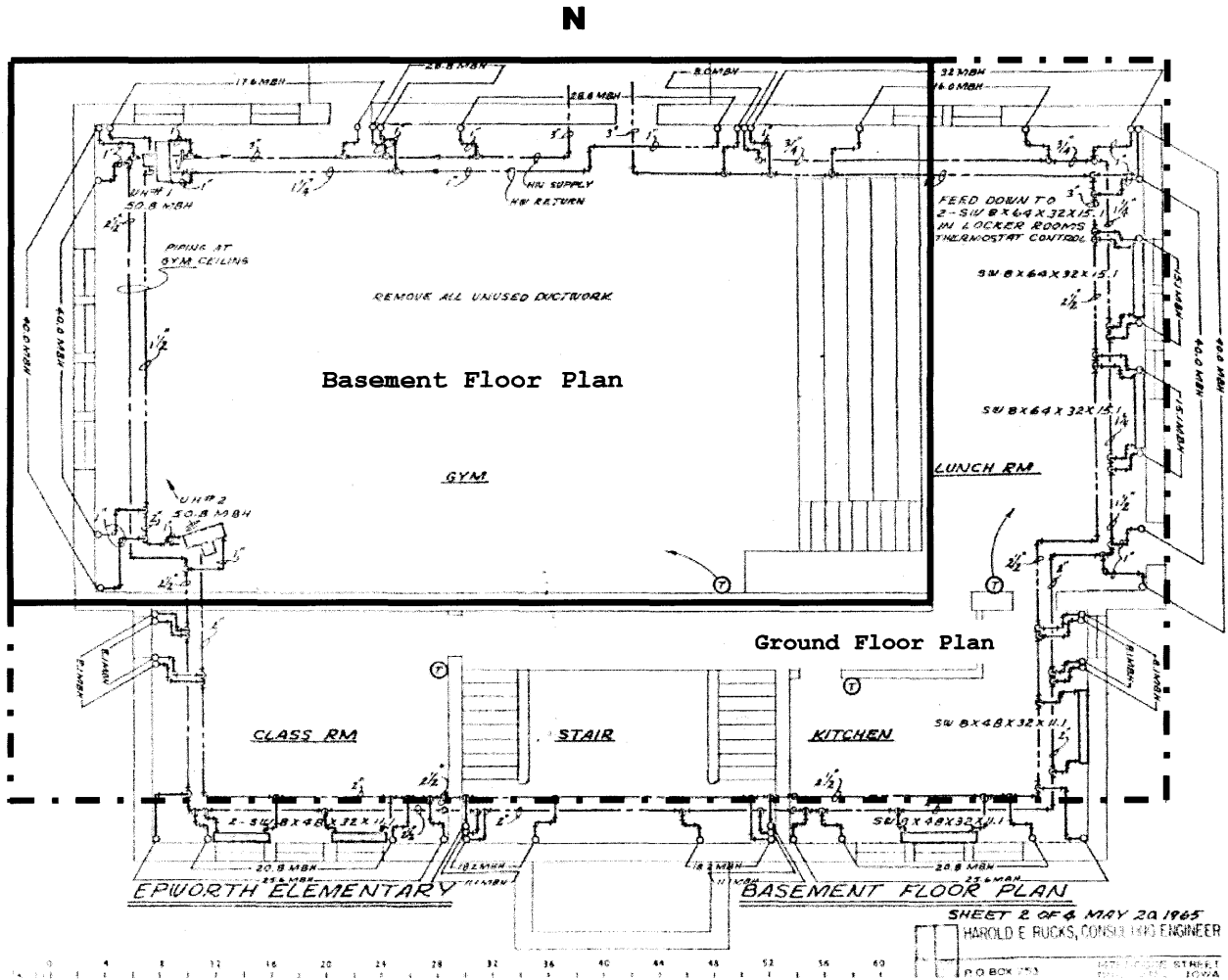
Boiler Room Floor Plan (1965)

United States Department of the Interior
National Park Service

NATIONAL REGISTER OF HISTORIC PLACES CONTINUATION SHEET

Section Floor Plans Page 14

Name of Property: **Epworth School**
County and State: **Dubuque County, Iowa**



Basement Floor Plan (1965) **———**
 Ground Floor Plan **- - -**

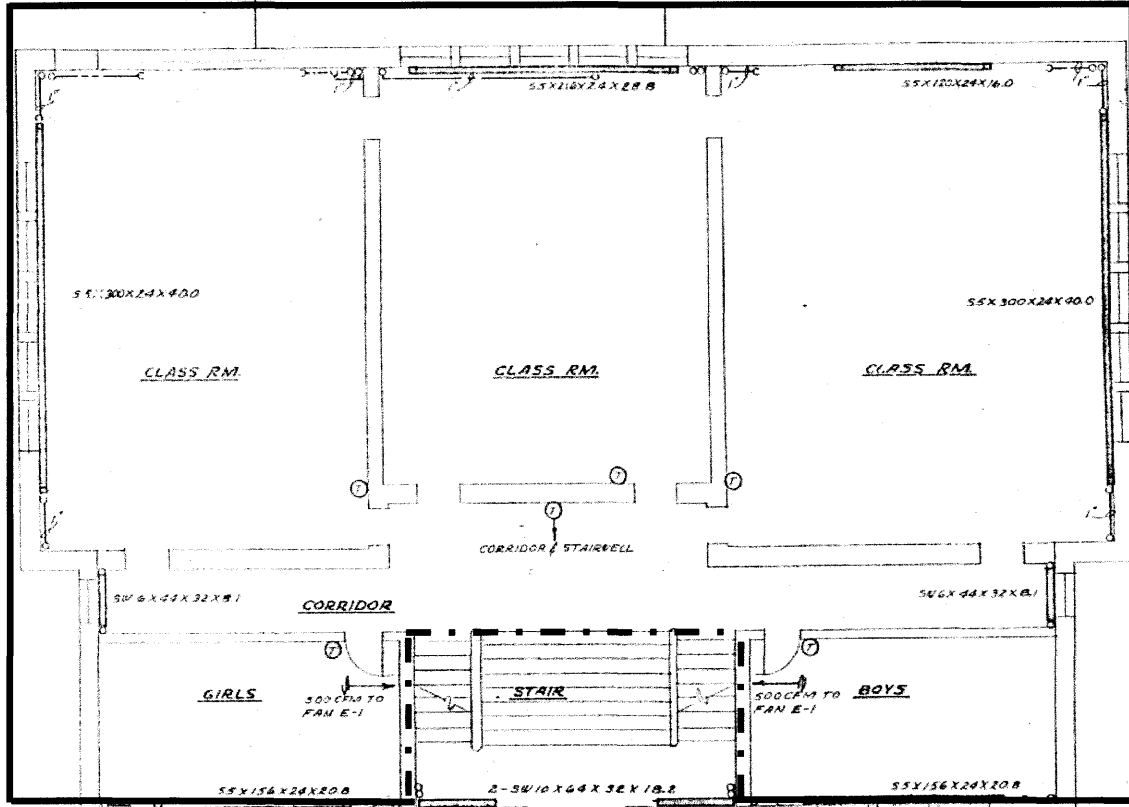
United States Department of the Interior
National Park Service

NATIONAL REGISTER OF HISTORIC PLACES CONTINUATION SHEET

Section Floor Plans Page 15

Name of Property: **Epworth School**
County and State: **Dubuque County, Iowa**

N



EPIWORTH ELEMENTARY

FIRST FLOOR PLAN

SHEET 3 OF 4 MAY 20, 1965

HAROLD E. RUCKS, CONSULTING ENGINEER

P.O. BOX 753

1471 DODGE STREET
DUBUQUE, IOWA

First Floor Plan (1965) ———
Entrance Level Plan - - -

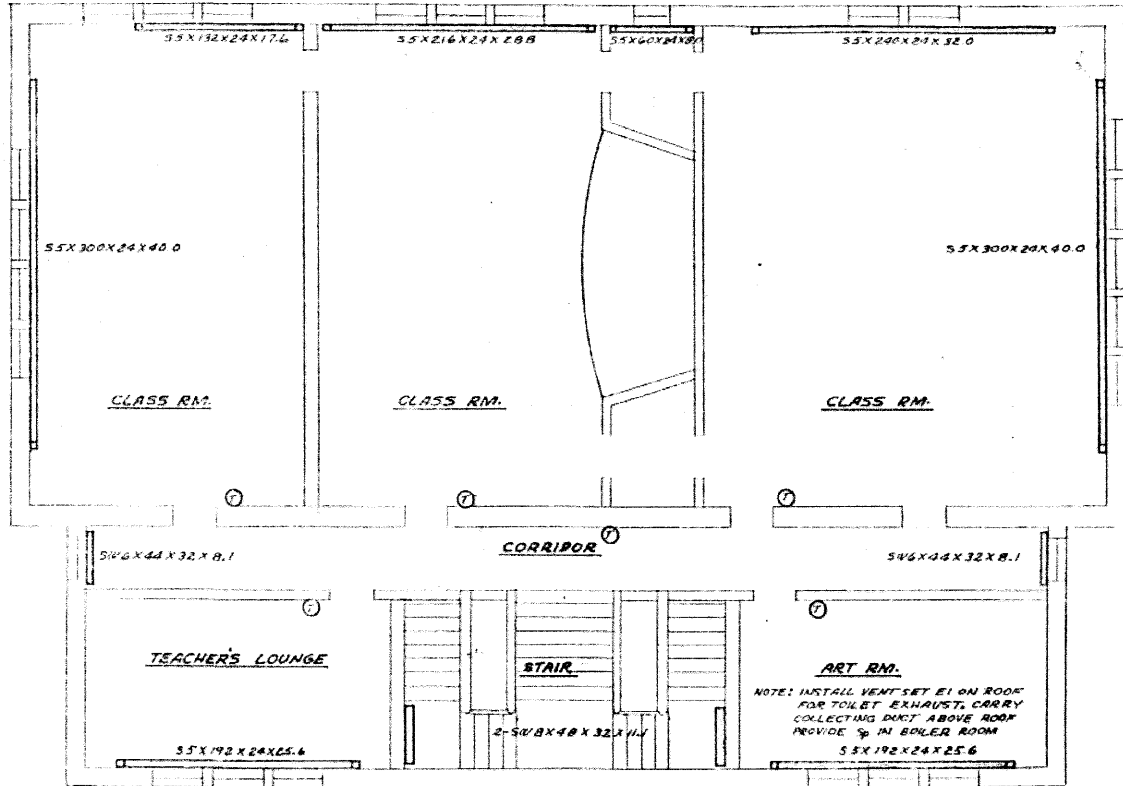
United States Department of the Interior
National Park Service

NATIONAL REGISTER OF HISTORIC PLACES CONTINUATION SHEET

Section Floor Plans Page 16

Name of Property: **Epworth School**
County and State: **Dubuque County, Iowa**

N



EPWORTH ELEMENTARY ~ SECOND FLOOR PLAN

SHEET 4 OF 4 MAY 20, 1965

HAROLD E. RUCKS, CONSULTING ENGINEER

0 4 8 12 16 20 24 28 32 36 40 44 48 52 56 60

170 DODGE STREET

Second Floor Plan (1965)

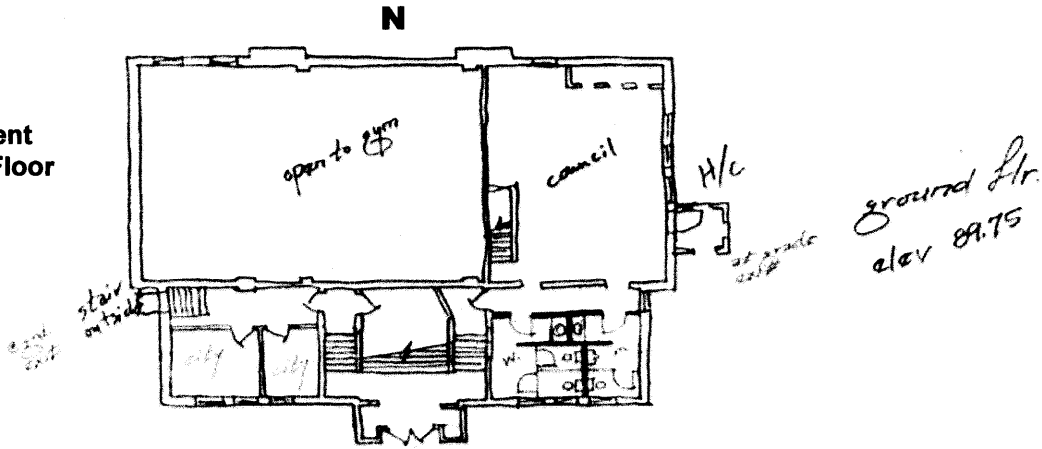
United States Department of the Interior
National Park Service

NATIONAL REGISTER OF HISTORIC PLACES CONTINUATION SHEET

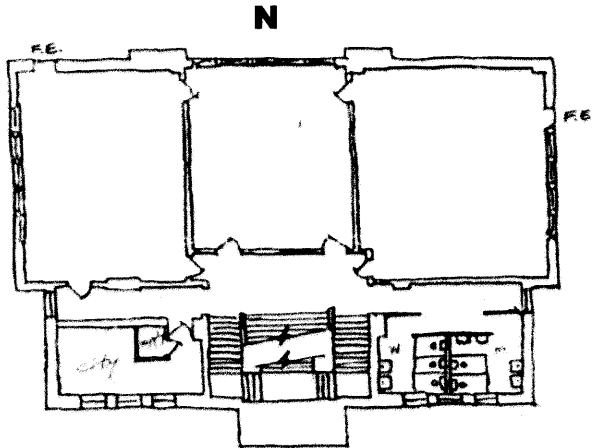
Section Floor Plans Page 17

Name of Property: **Epworth School**
County and State: **Dubuque County, Iowa**

**Basement
Ground Floor**

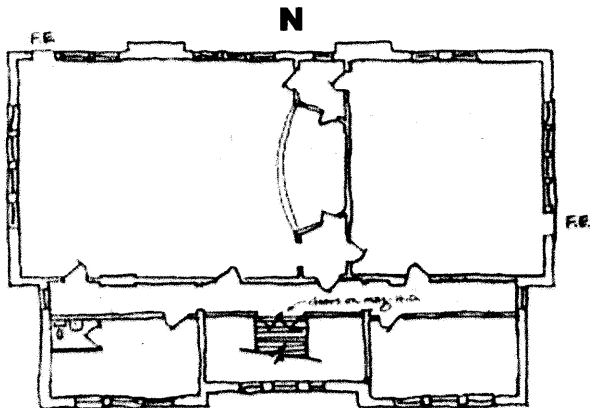


First Floor



F.E. = fire escape (existing)

**Historical Society
Second Floor**



2nd floor
elev 113.42
limit occupancy to 25

minimal alterations
to existing

13 Jan 03