

**United States Department of the Interior
National Park Service**

**National Register of Historic Places
Continuation Sheet**

Section number _____ Page _____

SUPPLEMENTARY LISTING RECORD

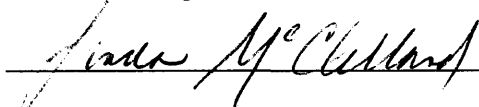
NRIS Reference Number: 03000357

Property Name: Oleson Park Music Pavilion

County: Webster State: Iowa

Multiple Name

This property is listed in the National Register of Historic Places in accordance with the attached nomination documentation subject to the following exceptions, exclusions, or amendments, notwithstanding the National Park Service certification included in the nomination documentation.



May 9, 2003

Signature of the Keeper

Date of Action

Amended Items in Nomination:

Section 8: Significance

“1976” is hereby removed from the entry for Significant Dates because it lies outside the period of significance for which property is being nominated for listing in the National Register.

The Iowa State Historic Preservation Office was notified of this amendment.

DISTRIBUTION:

- National Register property file**
- Nominating Authority (without nomination attachment)**

MAR 05 2003

NPS Form 10-900
(Rev. 10-90)

OMB No. 1024-0018

United States Department of the Interior
National Park Service



257

**NATIONAL REGISTER OF HISTORIC PLACES
REGISTRATION FORM**

This form is for use in nominating or requesting determinations for individual properties and districts. See instructions in How to Complete the National Register of Historic Places Registration Form (National Register Bulletin 16A). Complete each item by marking "x" in the appropriate box or by entering the information requested. If any item does not apply to the property being documented, enter "N/A" for "not applicable." For functions, architectural classification, materials, and areas of significance, enter only categories and subcategories from the instructions. Place additional entries and narrative items on continuation sheets (NPS Form 10-900a). Use a typewriter, word processor, or computer, to complete all items.

=====

1. Name of Property

=====

historic name OLESON PARK MUSIC PAVILION

other names/site number OLESON PARK BANDSHELL; KARL KING BANDSHELL

=====

2. Location

=====

street & number 1400 Oleson Park Avenue not for publication N/A
city or town Fort Dodge vicinity N/A
state Iowa code IA county Webster code 187 zip code 50501

=====

3. State/Federal Agency Certification

=====

As the designated authority under the National Historic Preservation Act of 1966, as amended, I hereby certify that this X nomination request for determination of eligibility meets the documentation standards for registering properties in the National Register of Historic Places and meets the procedural and professional requirements set forth in 36 CFR Part 60. In my opinion, the property X meets does not meet the National Register Criteria. I recommend that this property be considered significant X nationally X statewide X locally. (See continuation sheet for additional comments.)

Howell J. Soike
Signature of certifying official
STATE HISTORICAL SOCIETY OF IOWA

March 26, 2003
Date

State or Federal agency and bureau

=====

In my opinion, the property meets does not meet the National Register criteria. (See continuation sheet for additional comments.)

Signature of commenting or other official Date

State or Federal agency and bureau

=====

6. Function or Use

=====

Historic Functions (Enter categories from instructions)

Cat: Recreation & Culture Sub: Music Facility

Current Functions (Enter categories from instructions)

Cat: Recreation & Culture Sub: Music Facility

=====

7. Description

=====

Architectural Classification (Enter categories from instructions)

Cat: Modern Movement Sub: Moderne

Materials (Enter categories from instructions)

foundation Concrete

roof Concrete

walls Concrete

other _____

Narrative Description (Describe the historic and current condition of the property on one or more continuation sheets.)

=====
8. Statement of Significance
=====

Applicable National Register Criteria (Mark "x" in one or more boxes for the criteria qualifying the property for National Register listing)

- A Property is associated with events that have made a significant contribution to the broad patterns of our history.
- B Property is associated with the lives of persons significant in our past.
- C Property embodies the distinctive characteristics of a type, period, or method of construction or represents the work of a master, or possesses high artistic values, or represents a significant and distinguishable entity whose components lack individual distinction.
- D Property has yielded, or is likely to yield information important in prehistory or history.

Criteria Considerations (Mark "X" in all the boxes that apply.)

- A owned by a religious institution or used for religious purposes.
- B removed from its original location.
- C a birthplace or a grave.
- D a cemetery.
- E a reconstructed building, object, or structure.
- F a commemorative property.
- G less than 50 years of age or achieved significance within the past 50 years.

Areas of Significance (Enter categories from instructions)

Performing Arts
Entertainment/Recreation
Architecture

Period of Significance 1938 - 1953

Significant Dates 1938
1976

Significant Person (Complete if Criterion B is marked above)
King, Karl L.

Cultural Affiliation _____

Architect/Builder Kamphoefner, Henry
Fulton, Samuel, Supt. of Construction for the WPA

Narrative Statement of Significance (Explain the significance of the property on one or more continuation sheets.)

=====

9. Major Bibliographical References

=====

(Cite the books, articles, and other sources used in preparing this form on one or more continuation sheets.)

- Previous documentation on file (NPS)
- preliminary determination of individual listing (36 CFR 67) has been requested.
 - previously listed in the National Register
 - previously determined eligible by the National Register
 - designated a National Historic Landmark
 - recorded by Historic American Buildings Survey # _____
 - recorded by Historic American Engineering Record # _____

- Primary Location of Additional Data
- State Historic Preservation Office
 - Other State agency
 - Federal agency
 - Local government
 - University
 - Other

Name of repository: Mayor's Office, 819 1st Ave South, Fort Dodge, Iowa 50501
and the Special Collections Department, North Carolina State University

Libraries, 2205 Hillsboro, Raleigh, NC 27695

=====

10. Geographical Data

=====

Acreage of Property 3.4

UTM References (Place additional UTM references on a continuation sheet)

	Zone	Easting	Northing	Zone	Easting	Northing
1	<u>15</u>	<u>403667</u>	<u>4704524</u>	3	_____	_____
2	_____	_____	_____	4	_____	_____
	<u>See continuation sheet.</u>					

Verbal Boundary Description (Describe the boundaries of the property on a continuation sheet.)

Boundary Justification (Explain why the boundaries were selected on a continuation sheet.)

11. Form Prepared By

name/title Terry D. Lee and Jerry Rowe of the Fort Dodge Historic Preservation Commission, and Roger Natte of the Webster County Historical Society

e-mail address tlee2@fbx.com

organization Fort Dodge Historic Preservation Commission Date August 26, 2002

street & number 819 1st Ave South telephone 515-573-7144

city or town Fort Dodge state IA zip code 50501

Additional Documentation

Submit the following items with the completed form:

Continuation Sheets

Maps

- A USGS map (7.5 or 15 minute series) indicating the property's location.
- A sketch map for historic districts and properties having large acreage or numerous resources.

Photographs

Representative black and white photographs of the property.

Additional items (Check with the SHPO or FPO for any additional items)

Property Owner

(Complete this item at the request of the SHPO or FPO.)

name City of Fort Dodge

street & number 819 1st Ave South telephone 515-573-7144

city or town Fort Dodge, state IA zip code 50501

Paperwork Reduction Act Statement: This information is being collected for applications to the National Register of Historic Places to nominate properties for listing or determine eligibility for listing, to list properties, and to amend existing listings. Response to this request is required to obtain a benefit in accordance with the National Historic Preservation Act, as amended (16 U.S.C. 470 et seq.).

Estimated Burden Statement: Public reporting burden for this form is estimated to average 18.1 hours per response including the time for reviewing instructions, gathering and maintaining data, and completing and reviewing the form. Direct comments regarding this burden estimate or any aspect of this form to the Chief, Administrative Services Division, National Park Service, P.O. Box 37127, Washington, DC 20013-7127; and the Office of Management and Budget, Paperwork Reductions Project (1024-0018), Washington, DC 20503.

United States Department of the Interior
National Park Service

NATIONAL REGISTER OF HISTORIC PLACES
CONTINUATION SHEET

Section 7 Page 1

OLESON PARK MUSIC PAVILION

Webster County, Iowa

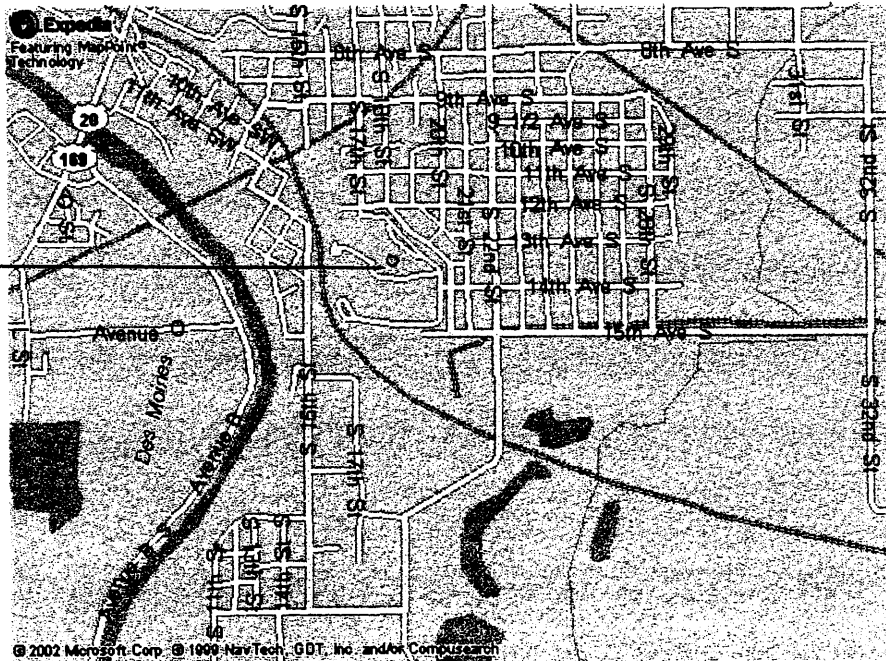
=====

DESCRIPTION SUMMARY

The Oleson Park Music Pavilion, completed in 1938, is set on irregularly-shaped, deep platforms and is wholly of reinforced concrete construction cast in smooth-lined forms; then, rubbed and painted. It is set in 64-acre Oleson Park, a beautiful wooded park given to the City of Fort Dodge by Olaf M. Oleson in 1905. It was Karl King who first had the idea for such an outstanding structure and it was he, in consort with State Senator Edward Breen and Walter Engelbart, who followed thought with action. WPA funding took care of 85 percent of the \$45,000 cost, the City of Fort Dodge making up the remainder.



PAVILION
LOCATION



Location Map:
Oleson Park Music Pavilion, Oleson Park, Webster County, Fort Dodge, Iowa

United States Department of the Interior
National Park Service

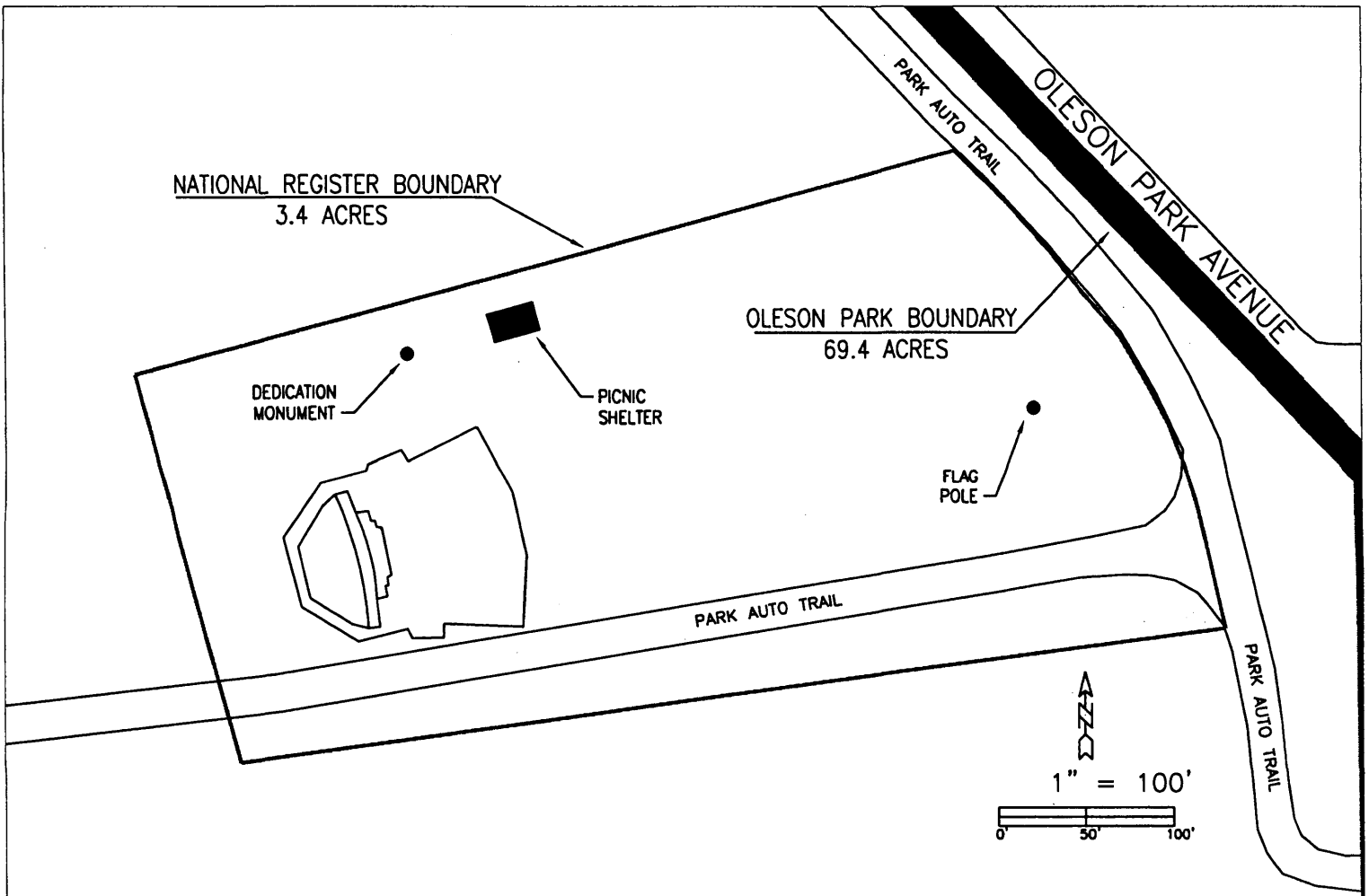
NATIONAL REGISTER OF HISTORIC PLACES
CONTINUATION SHEET

Section 7 Page 2

OLESON PARK MUSIC PAVILION

Webster County, Iowa

=====



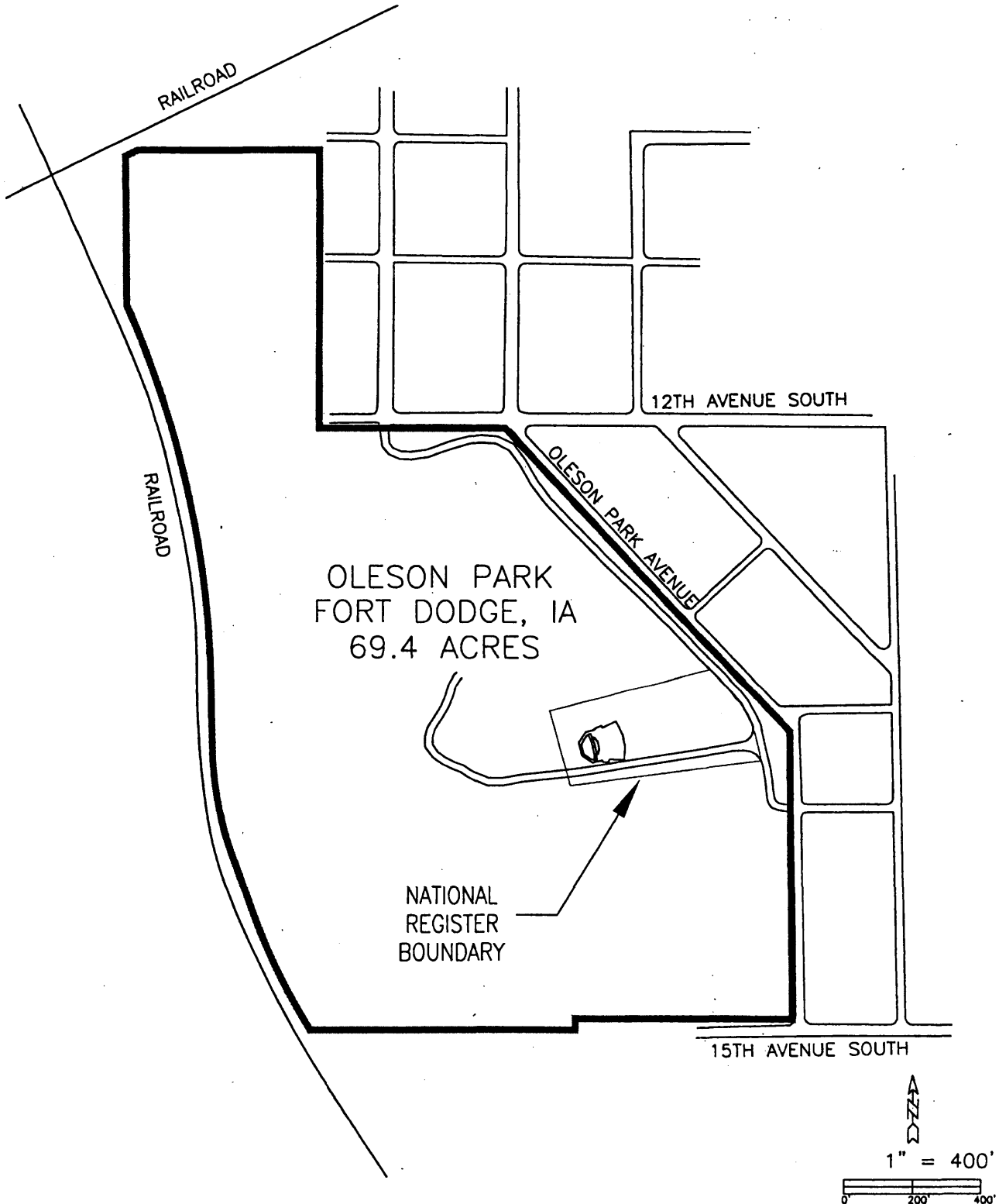
United States Department of the Interior
National Park Service

NATIONAL REGISTER OF HISTORIC PLACES
CONTINUATION SHEET

Section 7 Page 3

OLESON PARK MUSIC PAVILION

Webster County, Iowa



United States Department of the Interior
National Park Service

NATIONAL REGISTER OF HISTORIC PLACES
CONTINUATION SHEET

Section 7 Page 4

OLESON PARK MUSIC PAVILION
Webster County, Iowa

=====

GENERAL DESCRIPTION

The structurally sound pavilion is 77' wide, 29' deep (including the wading pool and fountains) and rises 36' from the base of the fountain to the top of the arc. It is in the Moderne style with decorative elements kept to a minimum. Its construction is totally cast-in-place, reinforced concrete. It exhibits a powerful sculptural composition, which could only be achieved through the use of the most modern forming techniques which take advantage of the plasticity of poured concrete. The pavilion was not only designed for visual attractiveness, but also for acoustical perfection. The masterful concrete sculpture encloses performers in a shell and projects their music for blocks without electronic assistance. The lighted wading pool and fountains are no longer in use as the plumbing necessary for their operation has long ago ceased to function. The ground floor of the pavilion (containing a restroom and a dressing room) with an entrance from the stage, as well as the rear of the structure, has deteriorated and now is essentially unusable. Eight steel casement windows that wrap the pavilion rear at the dressing room level are intact. The glass in the windows has been replaced with wood and painted the color of the pavilion. The original level seating that extended 204' to the east of the pavilion has been removed, the land near the pavilion is now slightly sloped, and covered with aluminum stadium seating, placed in 1976, that extends 70' from the base of the wading pool. The original 35' flagpole (counted as a contributing structure within this nomination) is set at a perfect right angle centering on the front of the pavilion 126 yards away is still intact and usable. Stress cracks in the concrete are visible as well as corrosion and spalling of the reinforcing steel. The 30' grassy area between the structure and the original seating has been removed.

A non-contributing 4' x 5' dedication monument with a bronze plaque honoring Karl King was set in July 1976 as part of our Nation's bi-centennial celebration. The plaque was donated by the National Music Council, Iowa Music Education Association, and Exxon. The plaque calls attention to the fact that Fort Dodge was the home of American Bandmaster and Composer, Karl King.

A non-contributing picnic shelter sits 120' to the North of the seats.

The pavilion is currently used by the Karl King Municipal Band for its summer concerts and a community wide effort at renovation has begun. It is the subject of a SAVE AMERICA'S TREASURES FY 2002 Historic Preservation Fund Grant application.

United States Department of the Interior
National Park Service

NATIONAL REGISTER OF HISTORIC PLACES
CONTINUATION SHEET

Section 8 Page 5

OLESON PARK MUSIC PAVILION

Webster County, Iowa

=====

SIGNIFICANCE SUMMARY

The Oleson Park Music Pavilion is significant nationally under Criterion B because of its close association with American Bandmaster and Composer Karl King, as well as its Architect Henry Kamphoefner. Karl L. King was a prolific composer of music for concert and military bands known the world over. It was the home base of this bandmaster and his music since its construction in 1938 until his death in 1971. It is also an excellent example of Modern Movement Architecture by Henry Kamphoefner, an architect and teacher who was a leader in his field during the middle of the 20th century. It is significant under Criterion A and C because of its close association with these two men, as well as symbolizing significant changes in architecture and music performance.

RESOURCE HISTORY AND HISTORIC CONTEXT

The Oleson Park Music Pavilion is located on a 3.4-acre plot within the 64-acre Oleson Park in the southeast part of Fort Dodge, Iowa. Historically, most community pavilions were located in a city square or downtown where it could be seen by any and all visitors. The architect of the Oleson Park Music Pavilion specifically chose the park so that it would be free of distracting noises. Since it was completed in 1938, it has served not only for the municipal band, but also for community activities and summer religious services.

The pavilion was first proposed in 1936 to replace an existing bandshell located on the City Square in downtown Fort Dodge as a Works Progress Administration project to help stimulate the local economy by providing jobs and to bring community improvements. Hired to design the structure was Henry Kamphoefner, a young architect from Sioux City who was an exponent of modern architecture. Kamphoefner had won international recognition for a pavilion that was constructed in Sioux City in 1935.

United States Department of the Interior
National Park Service

NATIONAL REGISTER OF HISTORIC PLACES
CONTINUATION SHEET

Section 8 Page 6

OLESON PARK MUSIC PAVILION

Webster County, Iowa

=====

HISTORIC AND CULTURAL SIGNIFICANCE

After the Civil War, local bands became a staple of community life. In Fort Dodge, bands have been part of the local scene since the Civil War and the community has had a long history of interest in music. The first municipal band was established c. 1888 and in the 1890's a National Guard band was established which achieved national significance, appearing at such national events as the 1893 and 1903 World's Fairs. Early concerts were held in a gazebo in the City Square which was replaced in the 1920's by a band stand, neither of which was desirable or adequate for quality performance.

The pavilion is associated with two men who were clearly leaders in their respective fields, Karl L. King and Henry Kamphoefner. In 1920, Karl King, band master of the Ringling Brothers, Barnum & Bailey Circus (and already recognized as a composer of marches) was hired to direct the municipal band. He directed the Fort Dodge Band for fifty years, making it one of the premier municipal bands in the nation, traveling to many fairs and festivals throughout the Midwest. In addition to directing the band and composing, King was instrumental in getting the Iowa Legislature to pass the Iowa Municipal Band Law which provided for local tax support for town bands, the model for similar legislation in 42 other states. He was also influential in the promotion of the movement to establish high school band programs. It was largely due to Mr. King's efforts that the Oleson Park Music Pavilion was created. In 1976, the Oleson Park Music Pavilion was rededicated to Mr. King and renamed the Karl King Band Shell.

The architect, Henry Kamphoefner, was one of the proponents of modern styles of architecture and advanced construction techniques. At the time, he was selected for the Fort Dodge project, he had already designed a pavilion in Sioux City for which he was to receive international recognition. He later went on to be the founding dean of the North Carolina State University School of Architecture and Landscape Design, building the school into an internationally recognized leader in modern architecture. He was honored at the end of his life by the American Institute of Architects with the Topaz Award, the highest honor given for contributions to architectural education.

United States Department of the Interior
National Park Service

NATIONAL REGISTER OF HISTORIC PLACES
CONTINUATION SHEET

Section 8 Page 7

OLESON PARK MUSIC PAVILION

Webster County, Iowa

=====
The Oleson Park Music Pavilion was chosen by the State of Iowa as its example of architectural excellence at the 1939 World's Fair in New York. It represents Streamline Moderne design and is believed to be the only building in Webster County in that style. It is an excellent example of the most advanced techniques of concrete construction of its time. It's acoustical excellence has been recognized by musicians as one of the finest outdoor music pavilions in the United States.

The pavilion was the product of the Great Depression of the 1930's and its construction reflected a sense of optimism and hope for the future at one of the low points in our nation's history. Constructed under the federal Works Progress Administration, a major New Deal public works program, it was designed to bring economic relief by providing jobs and stimulating the local economy. The structure is one of the most significant of the WPA projects in Webster County. The band shell has become one of the most recognizable structures in the Fort Dodge and is clearly a symbol of the City.

The dedication of the bandshell was one of the largest celebrations in the history of the community. It was held June 7, 1938 in conjunction with the annual convention of American Band Masters Association and the dedicatory concert attracted over 15,000 people.

The band and the pavilion over the years have provided many young musicians with a chance to get their start in the field, many area high school music educators with a chance to perform and sharpen their skills, and local audiences with a chance to hear many nationally known musicians (attracted by the prestige of the band and the structure) perform.

The pavilion may have done much to preserve the municipal band in Fort Dodge. In the post World War II years, many communities either lost their bands or cut back on their performances. Other forms of entertainment have drawn away the audiences from band concerts. Fort Dodge has been able to maintain its band and, in more recent years, even expand its audiences.

United States Department of the Interior
National Park Service

NATIONAL REGISTER OF HISTORIC PLACES
CONTINUATION SHEET

Section 8 Page 8

OLESON PARK MUSIC PAVILION

Webster County, Iowa

=====

STATEMENT OF SIGNIFICANCE

KARL L. KING

Karl L. King, a bandmaster and composer possessed that rare ability to create works that influence people long after he is gone. He was a prolific composer of music for concert and military bands all over the world. Rare is the high school or college band member who has not been introduced to this Master's music. Over the years, King wrote and published approximately 300 works, including more than 200 marches. He also wrote marches and fight songs for many American universities.

Much of King's music was written for, or heavily influenced by, the circus and much of his work contained the massive triumphals and grand entries that have challenged the capabilities of scores of musicians. His *Barnum & Bailey's Favorite* became the theme song of that circus and ranks as one of the most popular marches ever written. His music was written to honor certain events, schools, college, or outstanding musicians. His *King Henry* march honored Henry Fillmore, a contemporary. He wrote marches honoring almost every university in the Big Ten and his *Viking March* became *Indiana, Our Indiana*, that university's school song. King's music became so popular that bands played entire concerts of his numbers.

In 1929, King was elected president of the Iowa Bandmasters Association, and in 1930, he was one of the charter members of the American Bandmasters Association along with such well-known bandmasters as Edwin Franko Goldman, Frank Simon, Arthur Pryor, Herbert L. Clarke, and John Philip Sousa. Though not a politician, King was instrumental in the passing of the Iowa Band Law of 1922, the Iowa Legislature passed the first legislation of its kind anywhere. That law enabled local communities to levy a small tax of two mills to support a local municipal band. More than 40 states passed similar legislation, and King wrote *The Iowa Band Law* march to commemorate that event.

Approximately 15,000 attended the dedication ceremonies of the new pavilion in Fort Dodge on June 7, 1938. State Senator Edward Breen, who presided at the dedication ceremony, stated "No man has done more than Karl King to make this pavilion possible. His band is known from coast to coast; his music is known around the world. This year, he is president of the American Bandmasters Association, and his most distinguished colleagues have come from all over America to do him honor. And he will be known, I think, as long as bands parade."

King was awarded an honorary Doctorate of Music from Phillips University, Enid, Oklahoma in 1953 and named "Big Ten March King" in 1960. He was elected to the Academy of Wind and Percussion Arts by the National Band Association in 1962, awarded the Silver Medal by the Society of European Stage Authors and Composers in 1966, and named Honorary Life President of the American Band Association in 1967. In 1971, the American School Band Director's Association suspended their by-laws and presented King with the Edwin Franko Goldman Award, an award

United States Department of the Interior
National Park Service

NATIONAL REGISTER OF HISTORIC PLACES
CONTINUATION SHEET

Section 8 Page 9

OLESON PARK MUSIC PAVILION

Webster County, Iowa

=====
previously given only to school band directors. In 1975, Karl L. King received posthumously the Iowa Award, which represents the state's highest citizen award. Previous award winners include President Herbert Hoover, Vice President Henry Wallace, and Nobel Prize winner, Dr. Norman Borlaug.

As Conductor of the Fort Dodge Municipal Band for over fifty years (from 1920 until his death in 1971) King's ties with the Oleson Park Music Pavilion, where his music was performed by the Fort Dodge Municipal Band and the rest of a music loving country, are inescapable. It is a testimony to his talents that so much of his music is still played today all over the world. At his death in 1971, Karl L. King was one of the most loved and respected figures in American Music.

STATEMENT OF SIGNIFICANCE
ARCHITECTURE

Henry L. Kamphoefner, a major figure in the world of Architecture in the middle of the 20th century, was born in Des Moines, Iowa May 5th, 1907. He attended Morningside College, Sioux City, Iowa during the years 1924 through 1926. He received his B.S. in Architecture from the University of Illinois in 1930 and his M.S. from Columbia in 1931. After receiving his Certificate in Architecture from Beaux Arts Institute of Design in New York, he went into private practice in Sioux City.

During the ensuing years, he designed the award-winning Music Pavilion and Outdoor Theater at Grandview Park, Sioux City, Iowa and the Music Pavilion at Oleson Park, Fort Dodge, Iowa. Very similar in design, the Music Pavilion at Sioux City (built first) was selected by the Royal Institute of British Architects as one of America's outstanding buildings of the Post War Period and the Music Pavilion at Oleson Park, Fort Dodge was selected as Iowa's architectural contribution to the 1939 New York World's Fair.

Leaving private practice in 1937, Kamphoefner instructed at the University of Oklahoma School of Architecture becoming a full professor in 1940 and Director of the School of Architecture in 1942.

He became Dean of the new School of Architecture and Landscape Design at North Carolina State University in 1948 and immediately reshaped the School of Design, as he called it, to encompass not only architecture and landscape design but also textile, product and graphic design. In the early 1950, the NCSU School of Design, under the leadership of Kamphoefner, brought together a brilliant group of architects and teachers including Catalano, George Matsumoto, Matthew Nowicki, and others who were pioneers in the creation of new architectural concepts. For example, the Catalano House in Raleigh, North Carolina, was probably one of the

USDI/NPS NRHP Registration Form
Oleson Park Music Pavilion
Webster County, IA

NPS Form 10-900-a
(8-86)

OMB No. 1024-0018

United States Department of the Interior
National Park Service

NATIONAL REGISTER OF HISTORIC PLACES
CONTINUATION SHEET

Section 8 Page 10

OLESON PARK MUSIC PAVILION

Webster County, Iowa

=====
most important 20th century residential buildings. In fact, its design elicited a favorable response from Frank Lloyd Wright, who was known to rarely praise the work of other architects.

Werner Seligmann, in accepting the Topaz Medallion, called the North Carolina State University School of Architecture under Kamphoefner one of the most significant schools in America at the time. Such luminaries as Buckminster Fuller, who coined the term "Spaceship Earth" and is created with inventing the Geodesic Dome began their teaching career under Kamphoefner.

In 1967, Kamphoefner received an honorary D.F.A. from Morningside College in Sioux City, Iowa and in 1972 received an honorary L.L.D. from Ball State University, Muncie, Indiana. Kamphoefner was the nation's second recipient of the prestigious AIA/ACSA Topaz Medal for his contribution to architecture education.

Kamphoefner hired faculty members dedicated to modernism and through architectural education sought to bring modernism to the profession. He retired as Dean in 1972, after almost a quarter of a century of service, and in 1977 he received the Joint Award for Lasting Achievement in Architectural Education, given by the American Institute of Architects and the Association of Collegiate Schools of Architecture.

USDI/NPS NRHP Registration Form
Oleson Park Music Pavilion
Webster County, IA

NPS Form 10-900-a
(8-86)

OMB No. 1024-0018

United States Department of the Interior
National Park Service

NATIONAL REGISTER OF HISTORIC PLACES
CONTINUATION SHEET

Section 9 Page 11

OLESON PARK MUSIC PAVILION

Webster County, Iowa

=====

MAJOR BIBLIOGRAPHICAL REFERENCES

- Bowers, Martha H. *"Four Buildings by Henry Kamphoefner."*
Henry L. Kamphoefner - Architects files. State Historic Preservation Office. Des Moines, Ia: State Historical Society of Iowa, 1979.
- "Forms for Concrete Bandshells." Concrete Information.
Chicago: Portland Cement Association Publication, October, 1937.
- Hatton, Thomas J., *"Karl L. King: An American Bandmaster."*
Evanston, IL: The Instrumentalist Co., 1975.
- The Henry Leveke Kamphoefner Papers Collection Number: MC 198.30 July 1998. Special Collection Department, North Carolina State U. 2/26/02
<<http://www.lib.ncsu.edu/archives/collections/html/mco198.html>>.
- "Honors & Awards 1999 Kamphoefner Prize." AIA North Carolina. 1997-2001
<<http://www.aia.-nc.org/awards/1999/Kamphoefner.html>>.
- Kamphoefner, Henry L. "File 10-7-1 Being Letters, Notes, and Advice about Architectural Concrete." Special Collections Department. Raleigh, NC: NCSU. 1936.27.
<<http://www.lib.ncsu.edu/archives/collections/html/mco/198.html>>.
- "Oleson Park Music Pavilion." Editorial. Fort Dodge Messenger and Chronicle. 2 August 1988.
- King, Karl L. "Barnum & Bailey's Favorite." <<http://www.nwmissouri.edu/~ewoodru/king.html>>.
- Olson, Duane A. "Brief Biography of Karl L. King (1891-1971)."
The Iowa Bandmaster, Summer 1991: 12.
- Olson, Duane A. More About Karl King. Fort Dodge, IA: Historic Preservation Commission Files.
- Parkinson, Tom. "King, Karl L(awrence)." The New Grove Dictionary of Music and Musicians, 13.2nd ed. Ed. Sadie Stanley. New York: Grove's Dictionaries, Inc. 2001. 606-607.
- "Pavilion Dedication Attended by 15,000: Oleson and King Honored." Fort Dodge Messenger and Chronicle. 8 June 1938: 1+.
- Plautz, Dennis. "Save America's Treasures Grant Application." Fort Dodge, IA: City Planning Office files. 2002.
- Seligman, Werner. "Acceptance Speech." Syracuse University School of Architecture. Fort Dodge, IA: Historic Preservation Commission Files.
- Shank, Wesley I. "Kamphoefner, Henry Leveke." Iowa's Historic Architects: A Biographical Dictionary. Iowa City: U. of Iowa Press. (1999):93.
- Swaim, Ginalie. "Iowa Architect of Acoustics Designed Fort Dodge and Sioux City Band Shells." Iowa Heritage. Winter 2001: 177-179.

United States Department of the Interior
National Park Service

NATIONAL REGISTER OF HISTORIC PLACES
CONTINUATION SHEET

Section 10 Page 12

OLESON PARK MUSIC PAVILION

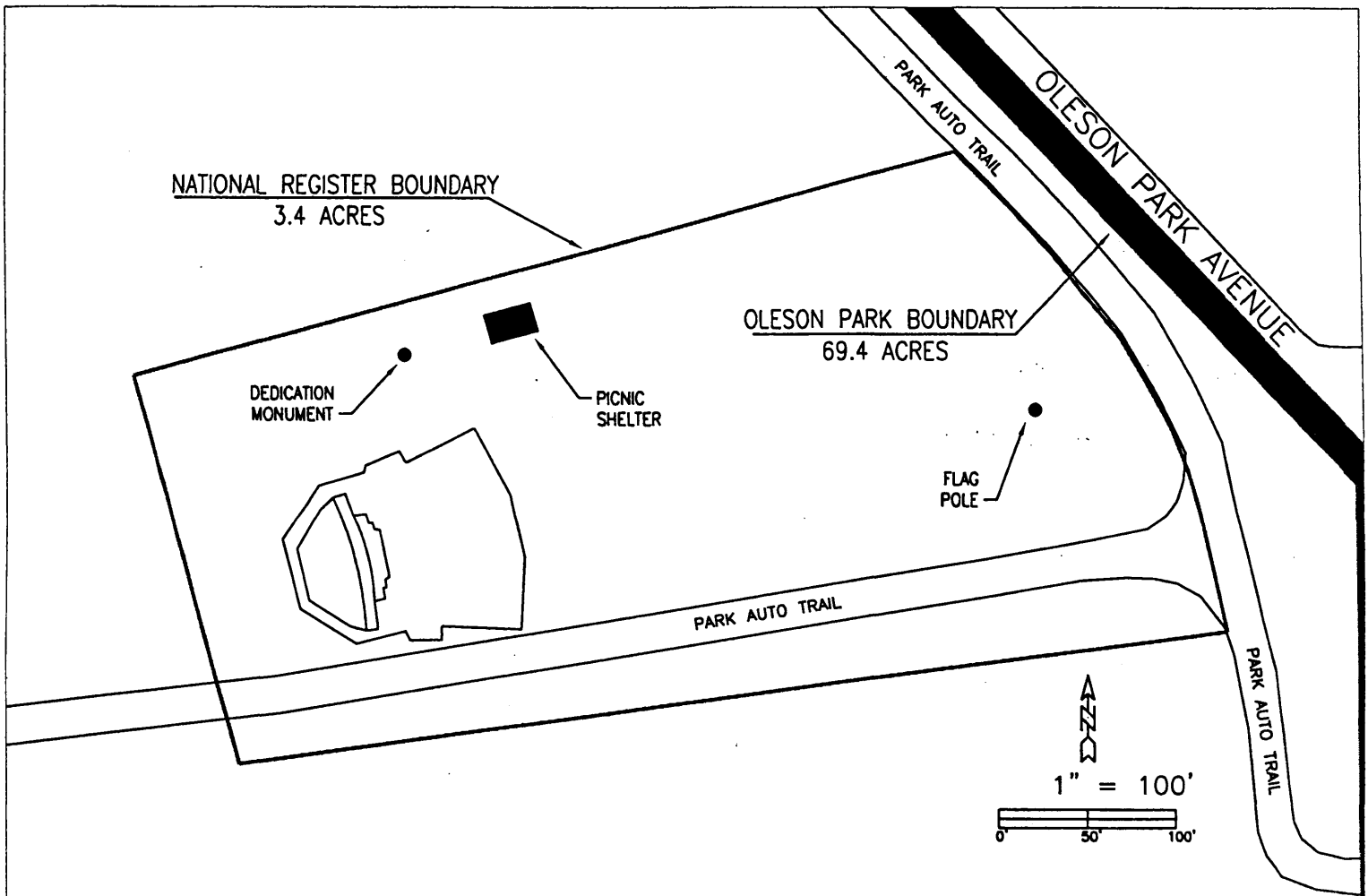
Webster County, Iowa

=====

GEOGRAPHICAL DATA

Verbal Boundary Description

The National Register boundary for the Oleson Park Music Pavilion is depicted on the following figure:



Boundary Justification

The nominated property includes the entire parcel historically associated with the pavilion. Source: GIS Service, Engineering Dept. City of Fort Dodge, IA 819 1st Ave South, Fort Dodge, IA 50501.

United States Department of the Interior
National Park Service

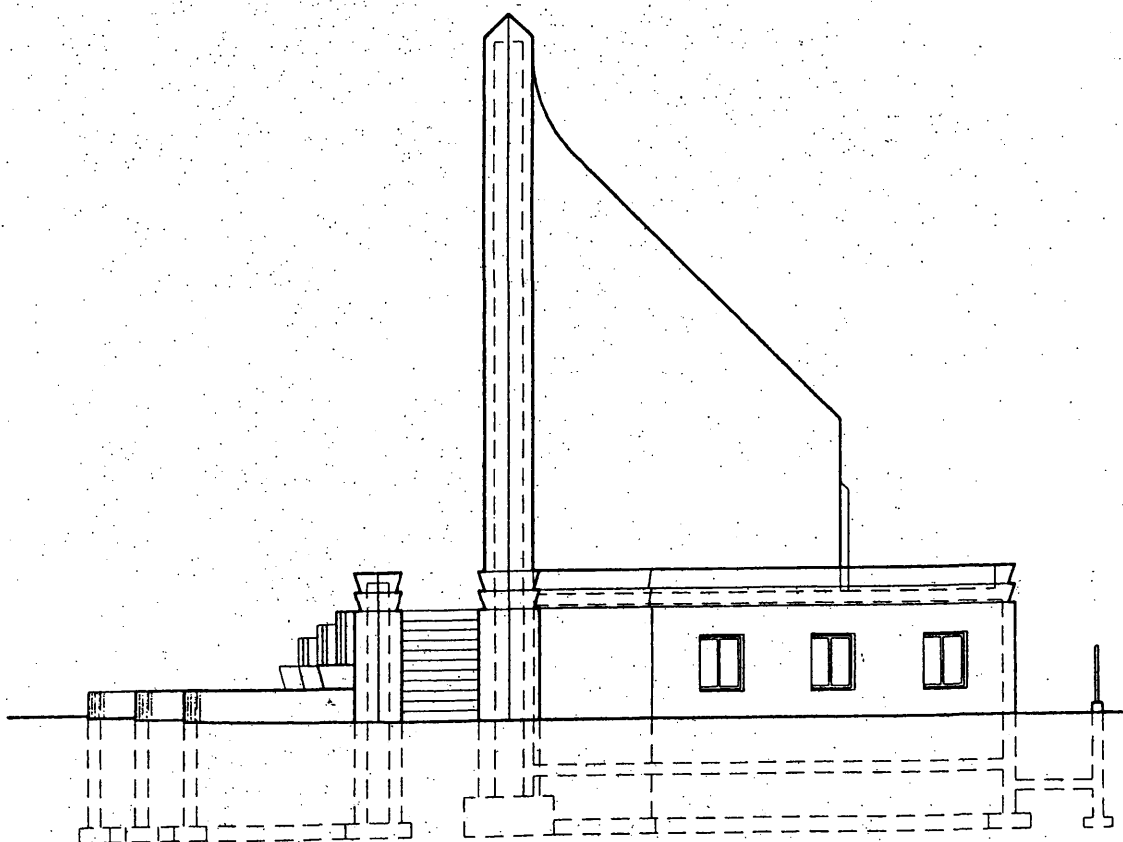
NATIONAL REGISTER OF HISTORIC PLACES
CONTINUATION SHEET

Section Floor Plans

Page 13

OLESON PARK MUSIC PAVILION

Webster County, Iowa



North Elevation (Scale: 3/32" = 1.0') Oleson Park Music Pavilion, Fort Dodge, Iowa, August 2002

Source: Rudi Lee Dreyer, Architects, Ames IA 2002 Based upon structure examination and original documents on file with the City of Fort Dodge, IA.

USDI/NPS NRHP Registration Form
Oleson Park Music Pavilion
Webster County, IA

NPS Form 10-900-a
(8-86)

OMB No. 1024-0018

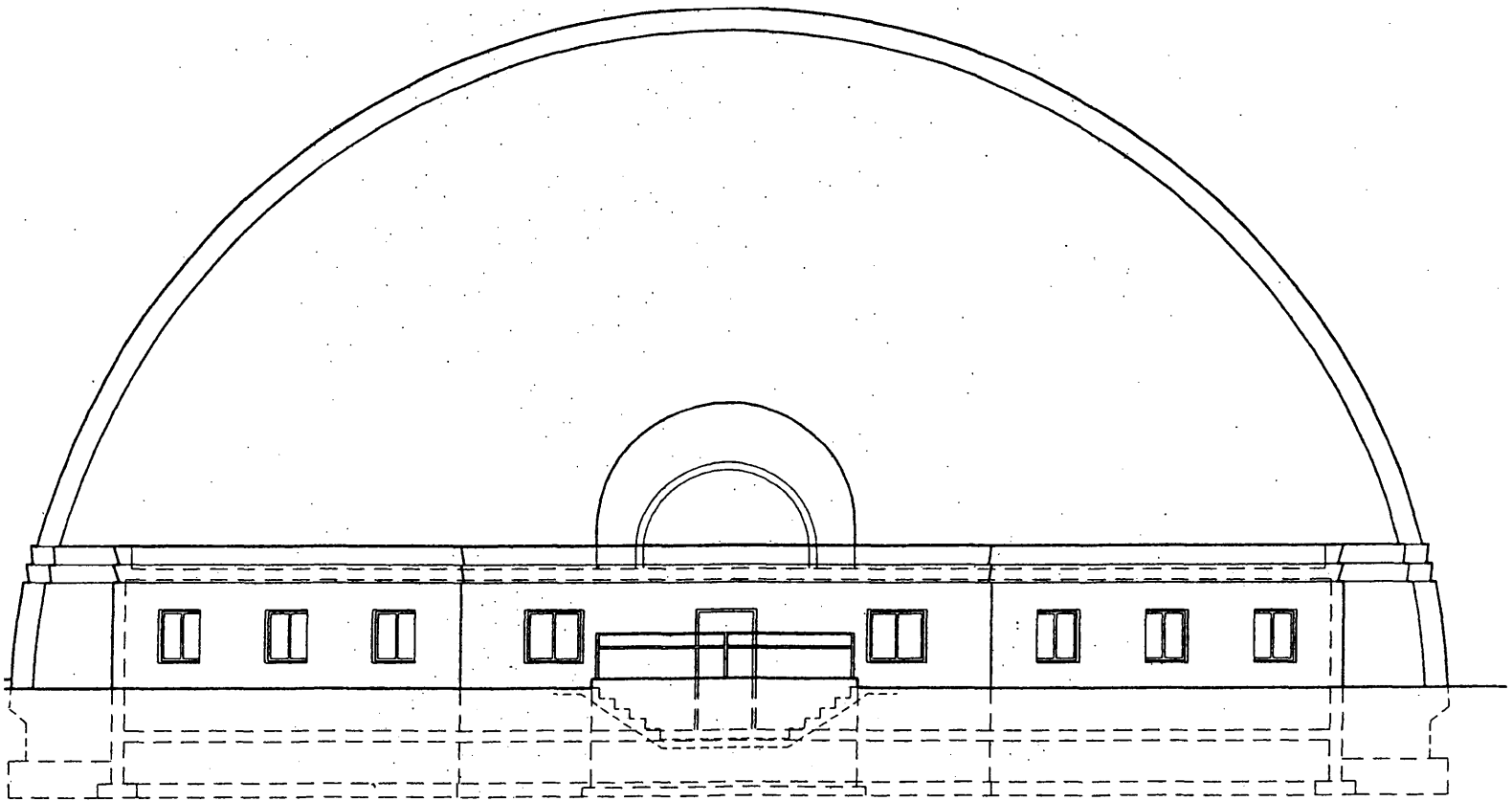
United States Department of the Interior
National Park Service

NATIONAL REGISTER OF HISTORIC PLACES
CONTINUATION SHEET

Section Floor Plans Page 14

OLESON PARK MUSIC PAVILION

Webster County, Iowa



West Elevation (Scale: 3/32" = 1.0') Oleson Park Music Pavilion, Fort Dodge, Iowa, August 2002

Source: Rudi Lee Dreyer, Architects, Ames IA 2002 Based upon structure examination and original documents on file with the City of Fort Dodge, IA.

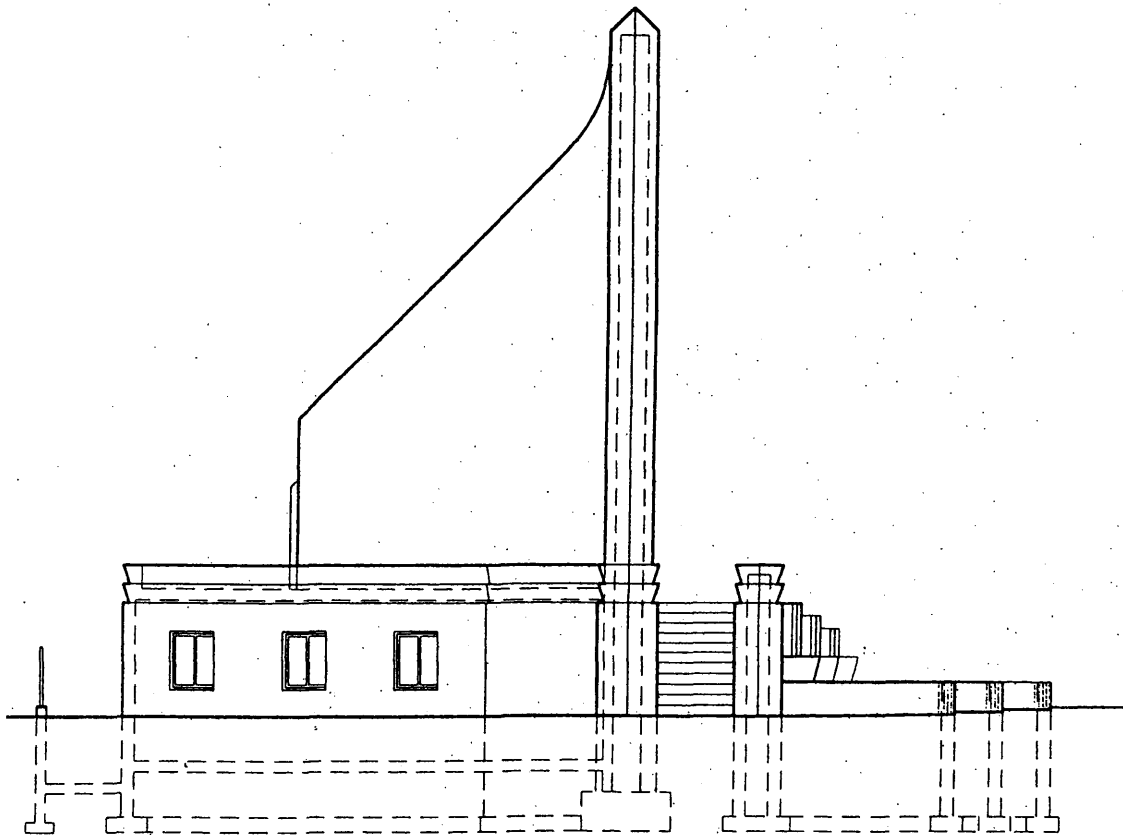
United States Department of the Interior
National Park Service

NATIONAL REGISTER OF HISTORIC PLACES
CONTINUATION SHEET

Section Floor Plans Page 15

OLESON PARK MUSIC PAVILION

Webster County, Iowa



South Elevation (Scale: 3/32" = 1.0') Oleson Park Music Pavilion, Fort Dodge, Iowa, August 2002

Source: Rudi Lee Dreyer, Architects, Ames IA 2002 Based upon structure examination and original documents on file with the City of Fort Dodge, IA.

USDI/NPS NRHP Registration Form
Oleson Park Music Pavilion
Webster County, IA

NPS Form 10-900-a
(8-86)

OMB No. 1024-0018

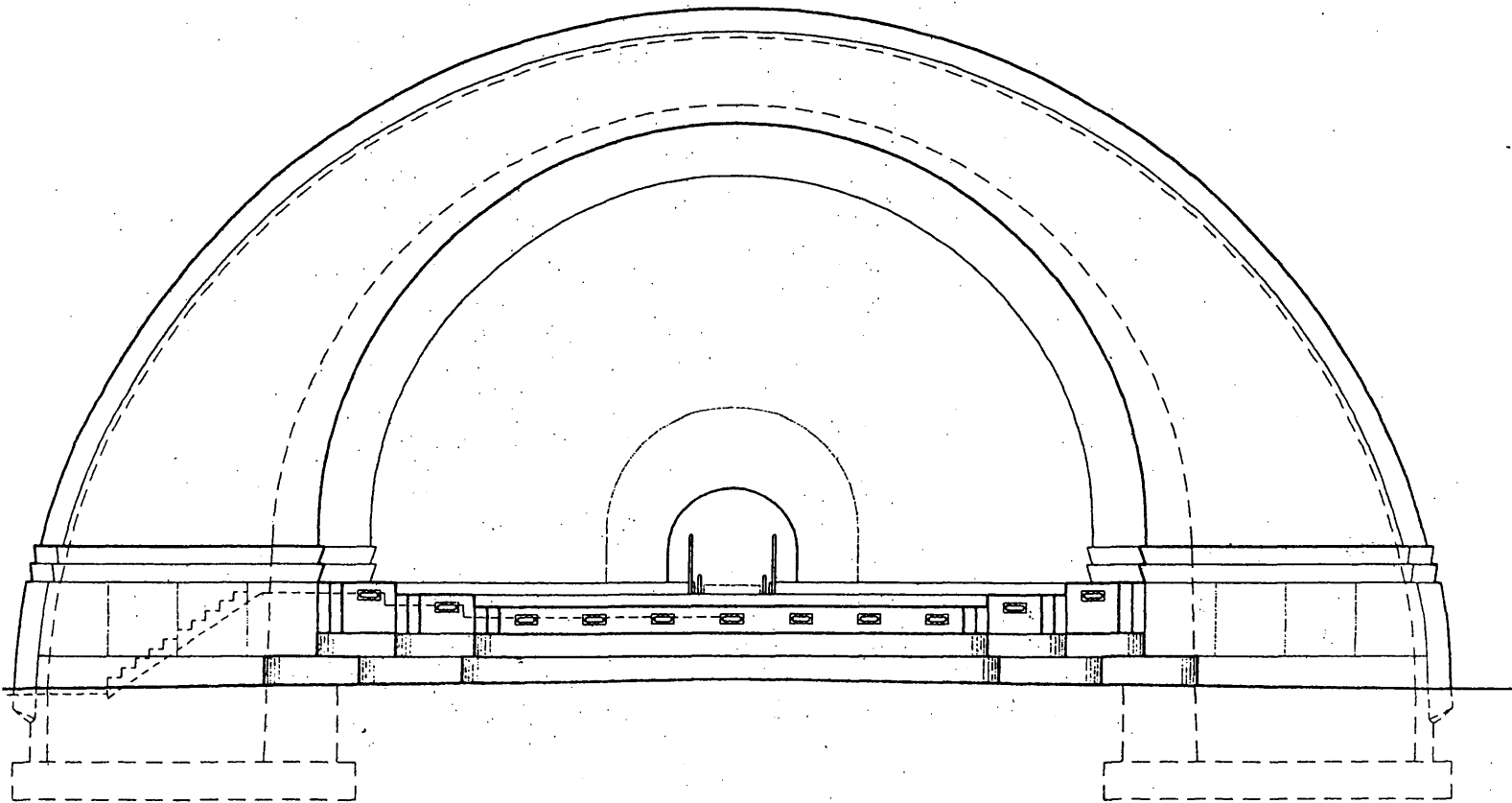
United States Department of the Interior
National Park Service

NATIONAL REGISTER OF HISTORIC PLACES
CONTINUATION SHEET

Section Floor Plans Page 16

OLESON PARK MUSIC PAVILION

Webster County, Iowa



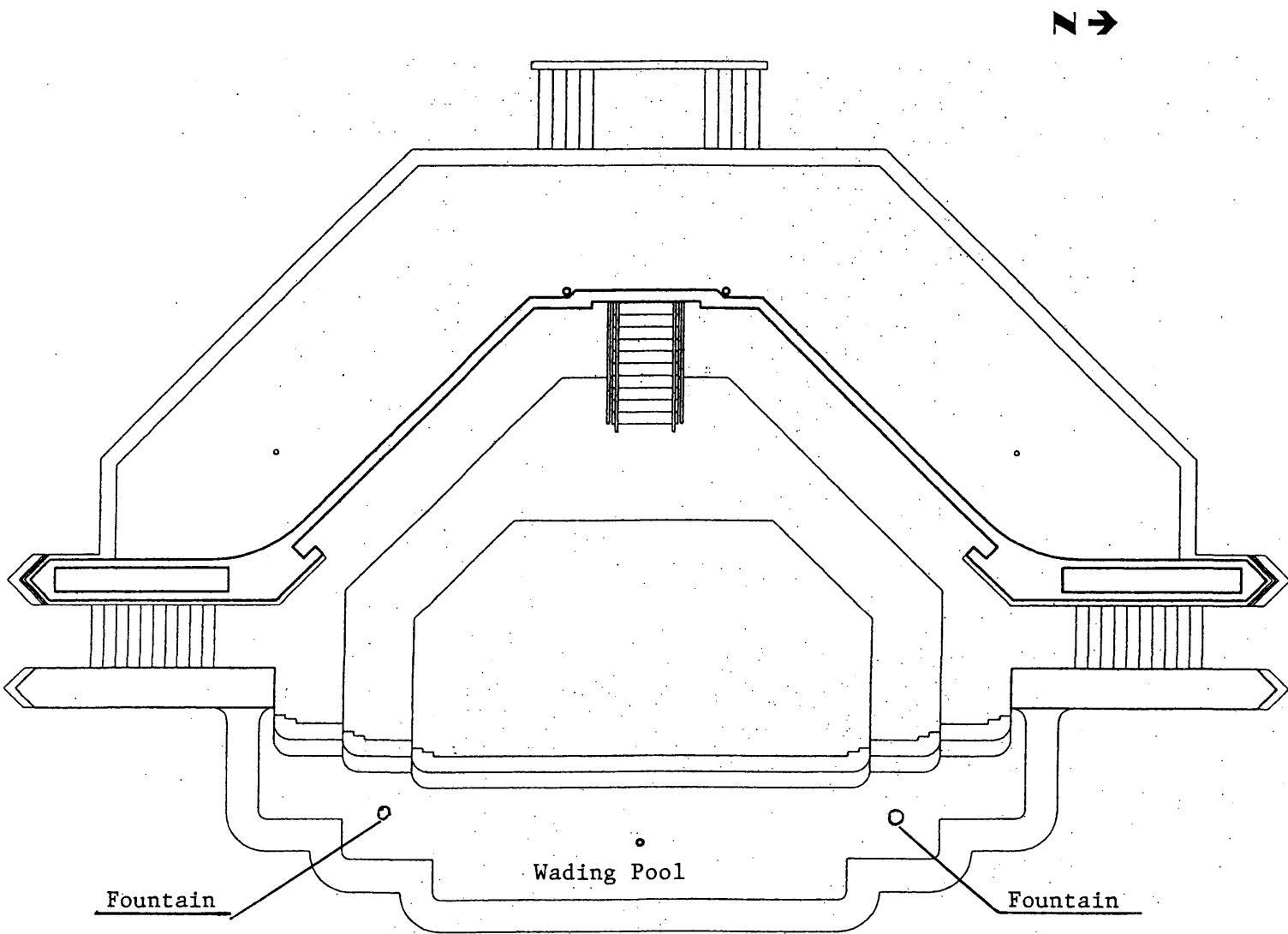
East Elevation, (Scale: 3/32" = 1.0'), Oleson Park Music Pavilion, Fort Dodge, Iowa, August 2002
Source: Rudi Lee Dreyer, Architects, Ames IA 2002 Based upon structure examination and original documents on file with the City of Fort Dodge, IA.

United States Department of the Interior
National Park Service

NATIONAL REGISTER OF HISTORIC PLACES
CONTINUATION SHEET

Section Floor Plans Page 17

OLESON PARK MUSIC PAVILION
Webster County, Iowa



Stage Floor Plan (Scale: 3/32" = 1.0') Oleson Park Music Pavilion, Fort Dodge, Iowa August 2002

Source: Rudi Lee Dreyer, Architects, Ames IA 2002 Based upon structure examination and original documents on file with the City of Fort Dodge, IA.

USDI/NPS NRHP Registration Form
Oleson Park Music Pavilion
Webster County, IA

NPS Form 10-900-a
(8-86)

OMB No. 1024-0018

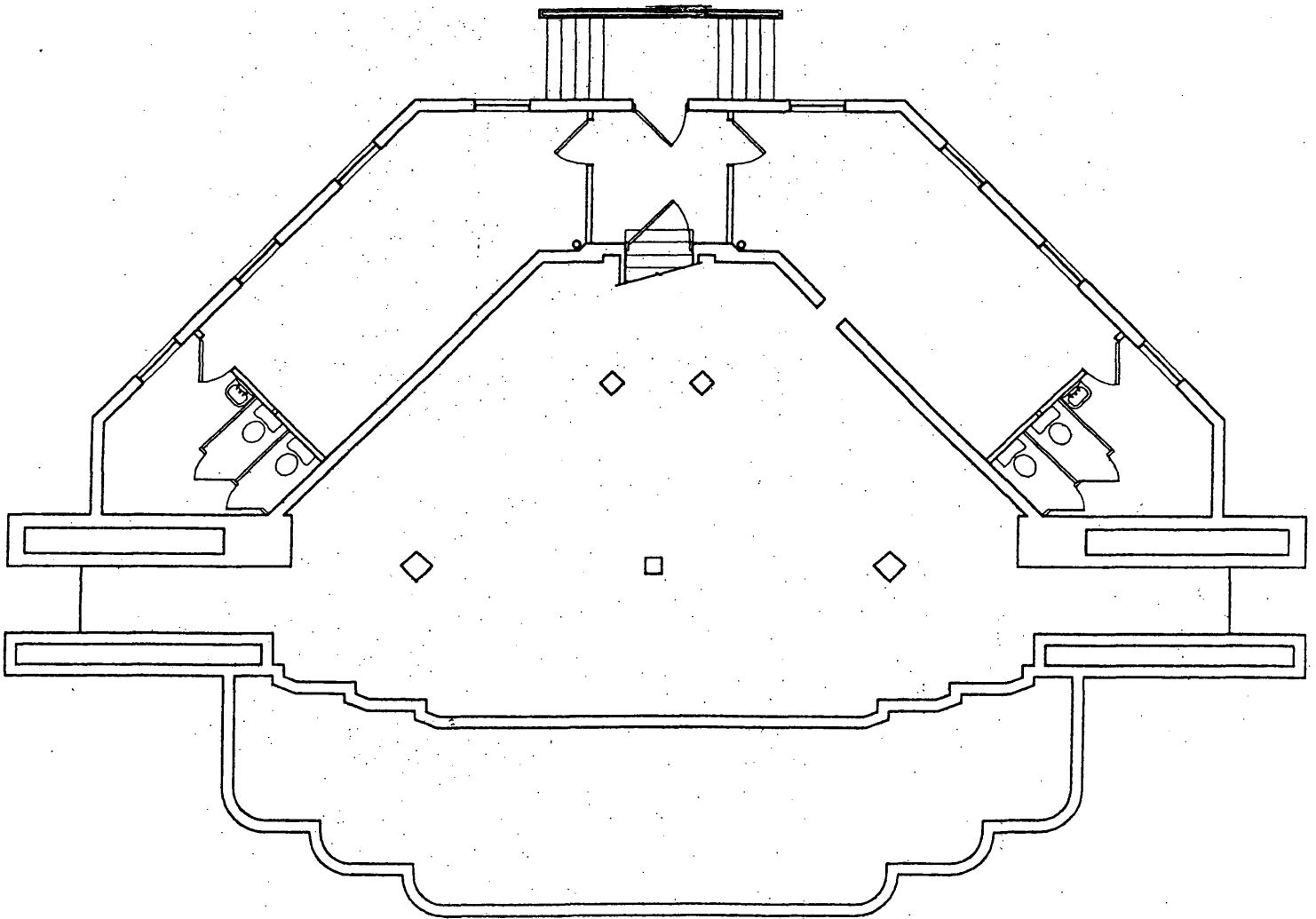
United States Department of the Interior
National Park Service

NATIONAL REGISTER OF HISTORIC PLACES
CONTINUATION SHEET

Section Floor Plans Page 18

OLESON PARK MUSIC PAVILION

Webster County, Iowa



Ground Floor Plan (Scale: 3/32" = 1.0') Oleson Park Music Pavilion, Fort Dodge, Iowa, August 2002
Source: Rudi Lee Dreyer, Architects, Ames IA 2002 Based upon structure examination and original documents on file with the City of Fort Dodge, IA.

United States Department of the Interior
National Park Service

NATIONAL REGISTER OF HISTORIC PLACES
CONTINUATION SHEET

Section Photos Page 19

OLESON PARK MUSIC PAVILION
Webster County, Iowa

=====
The following items apply to all photographs.

Property Name: Oleson Park Music Pavilion

Location: Fort Dodge, Webster County, Iowa

Individual Photograph Identifications:

1. Howard Haase, 2001, Haase Photography, Ft. Dodge, IA, overall view, facing Northwest.
2. Howard Haase, 2001, Haase Photography, Ft. Dodge, IA, overall view, facing West.
3. Howard Haase, 2001, Haase Photography, Ft. Dodge, IA, rear side view, facing Southeast.
4. Howard Haase, 2001, Haase Photography, Ft. Dodge, IA, closeup water outlets, facing Southwest.
5. Howard Haase, 2001, Haase Photography, Ft. Dodge, Iowa, Bandshell, facing West.
6. Howard Haase, 2002, Haase Photography, Ft. Dodge, Iowa, non-contributing picnic shelter, facing Northeast.
7. Howard Haase, 2002, Haase Photography, Ft. Dodge, Iowa, Dedication Monument, facing North.
8. Howard Haase, 2002, Haase Photography, Ft. Dodge, Iowa, Flagpole, facing West.

USDI/NPS NRHP Registration Form
Oleson Park Music Pavilion
Webster County, IA

NPS Form 10-900-a
(8-86)

OMB No. 1024-0018

United States Department of the Interior
National Park Service

NATIONAL REGISTER OF HISTORIC PLACES
CONTINUATION SHEET

Section HistoricalPhotos Page 20 OLESON PARK MUSIC PAVILION
Webster County, Iowa

=====



Historical Reproduction, c. 1938, Construction, looking WSW
Source: Karl King Museum, Ft. Dodge Public Library, 400 Central Ave., Ft. Dodge, Iowa 50501

USDI/NPS NRHP Registration Form
Oleson Park Music Pavilion
Webster County, IA

NPS Form 10-900-a
(8-86)

OMB No. 1024-0018

United States Department of the Interior
National Park Service

NATIONAL REGISTER OF HISTORIC PLACES
CONTINUATION SHEET

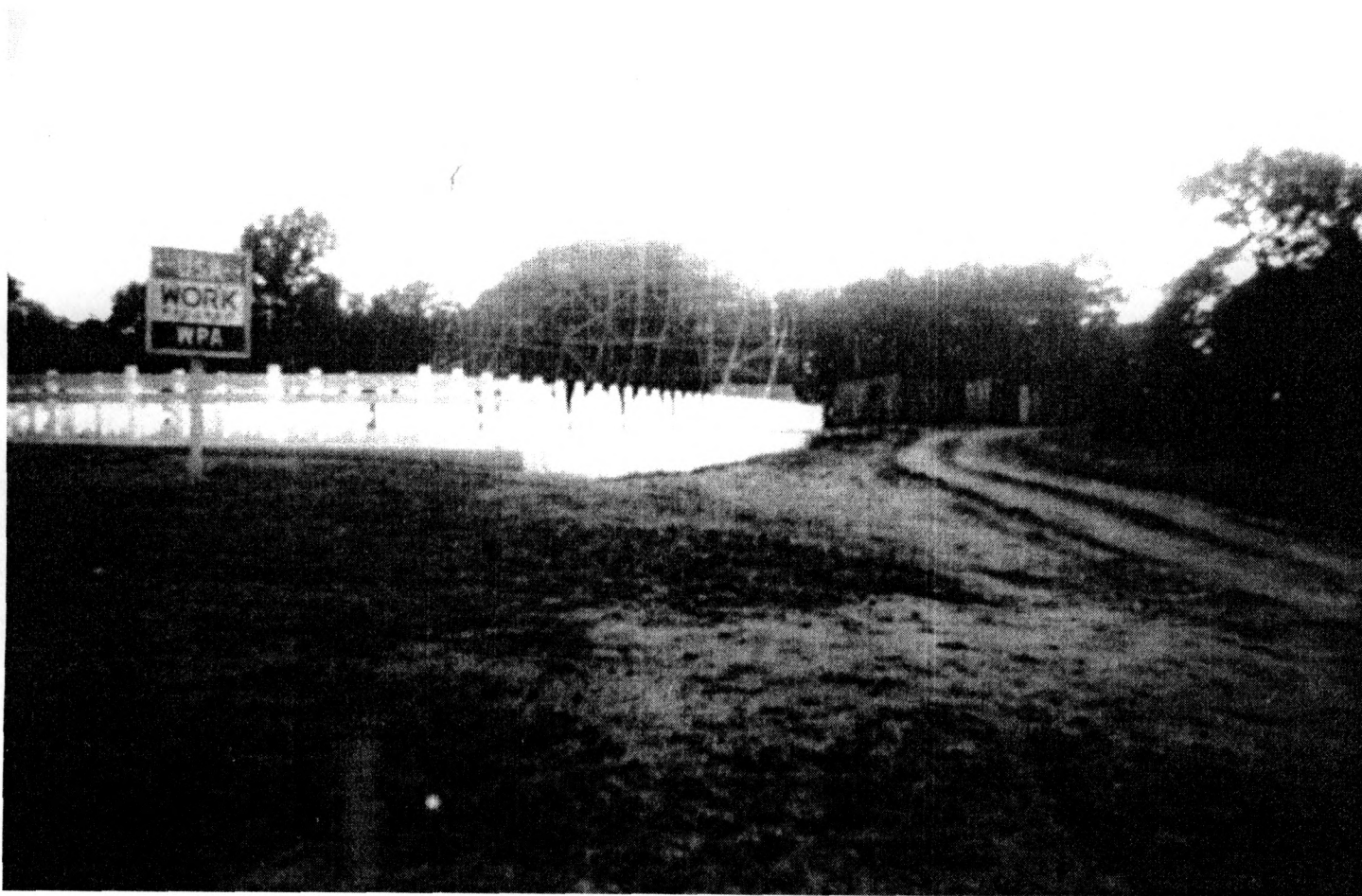
Section HistoricalPhotos

Page 21

OLESON PARK MUSIC PAVILION

Webster County, Iowa

=====



Historical Reproduction, c. 1938, Construction, WPA Project, looking WSW
Source: Karl King Museum, Ft. Dodge Public Library, 400 Central Ave., Ft. Dodge, Iowa 50501

USDI/NPS NRHP Registration Form
Oleson Park Music Pavilion
Webster County, IA

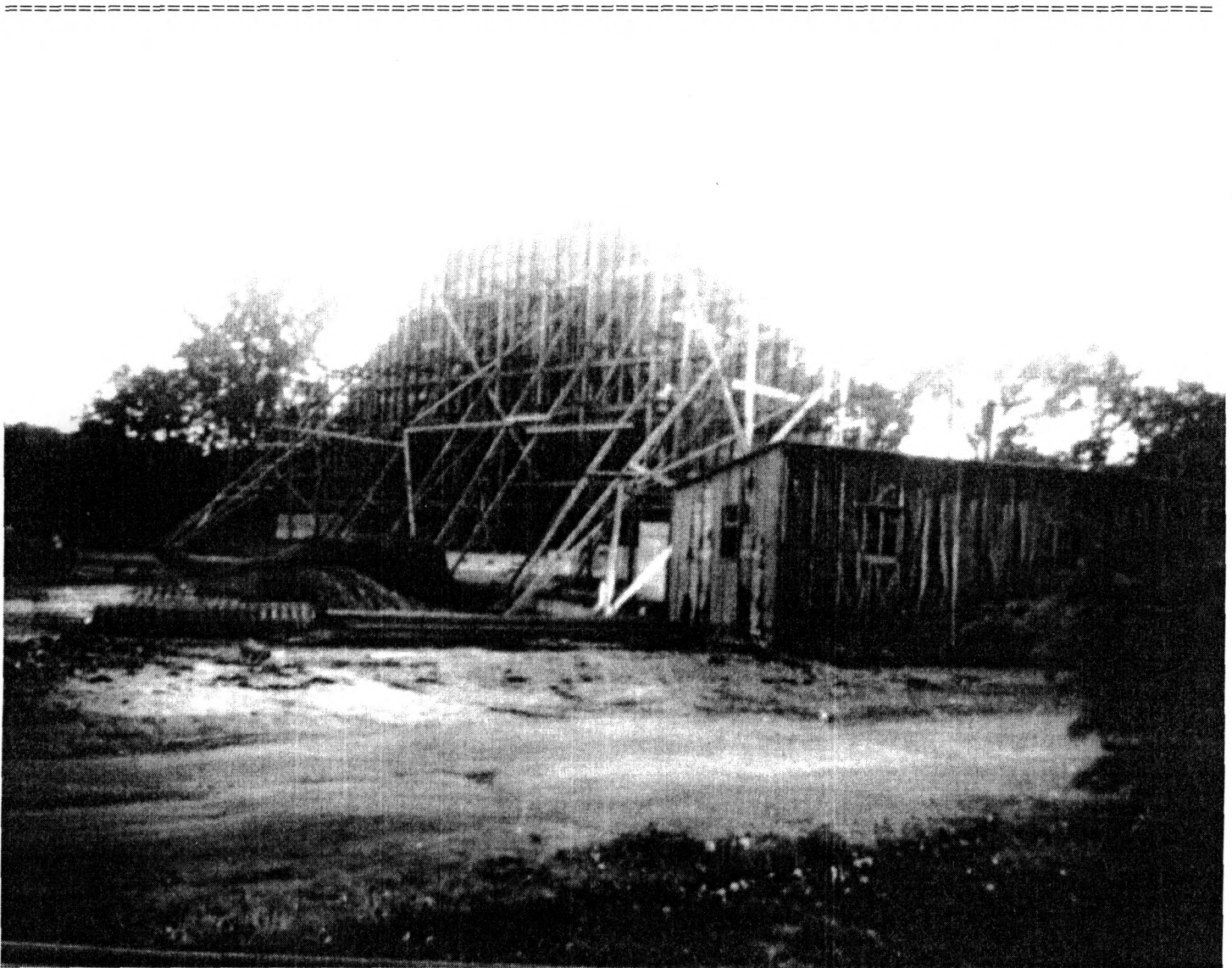
NPS Form 10-900-a
(8-86)

OMB No. 1024-0018

United States Department of the Interior
National Park Service

NATIONAL REGISTER OF HISTORIC PLACES
CONTINUATION SHEET

Section Historical Photos Page 22 OLESON PARK MUSIC PAVILION
Webster County, Iowa



Historical Reproduction, c. 1938, Construction, looking NE

Source: Karl King Museum, Ft. Dodge Public Library, 400 Central Ave., Ft. Dodge, Iowa 50501

USDI/NPS NRHP Registration Form
Oleson Park Music Pavilion
Webster County, IA

NPS Form 10-900-a
(8-86)

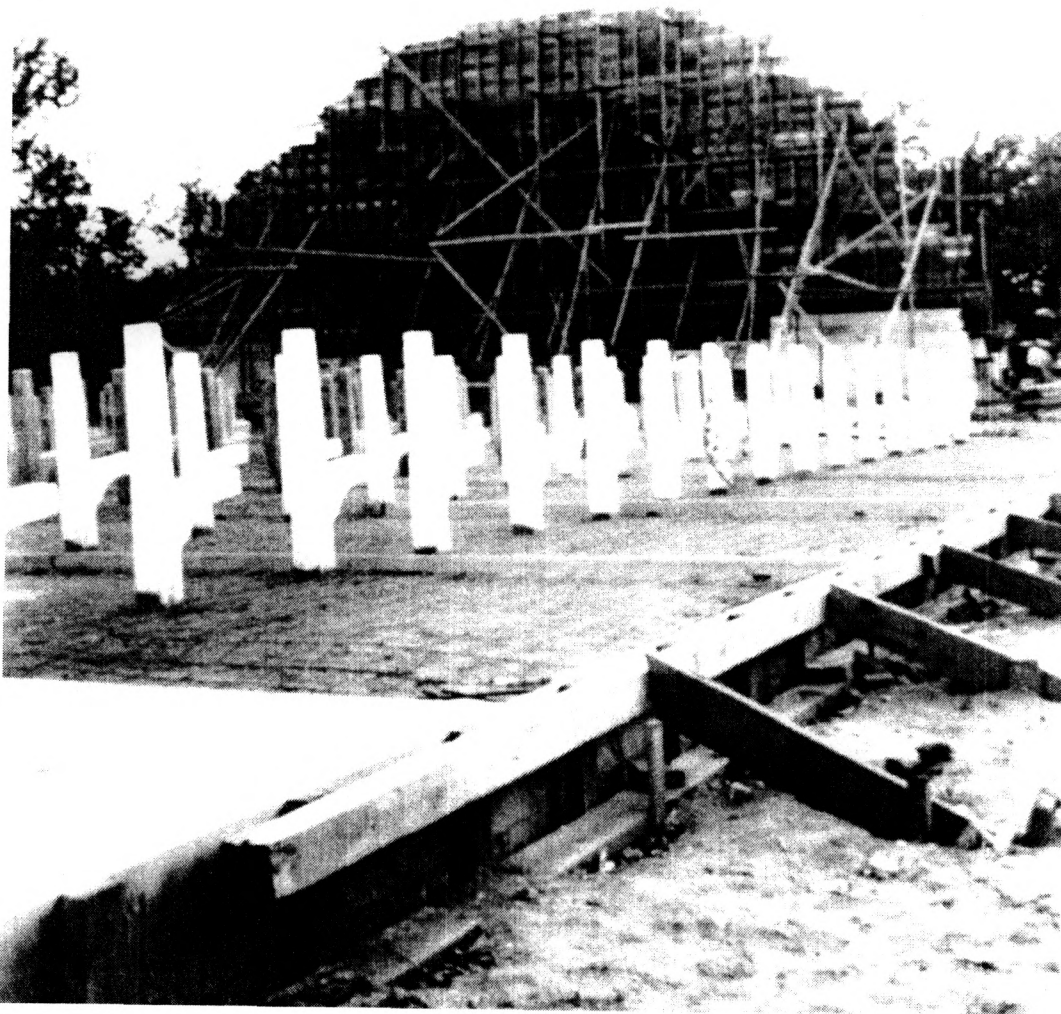
OMB No. 1024-0018

United States Department of the Interior
National Park Service

NATIONAL REGISTER OF HISTORIC PLACES
CONTINUATION SHEET

Section Historical Photos Page 23 OLESON PARK MUSIC PAVILION
Webster County, Iowa

=====



Historical Reproduction, c. 1938, Seat Frames, looking WSW
Source: Karl King Museum, Ft. Dodge Public Library, 400 Central Ave., Ft. Dodge, Iowa 50501

USDI/NPS NRHP Registration Form
Oleson Park Music Pavilion
Webster County, IA

NPS Form 10-900-a
(8-86)

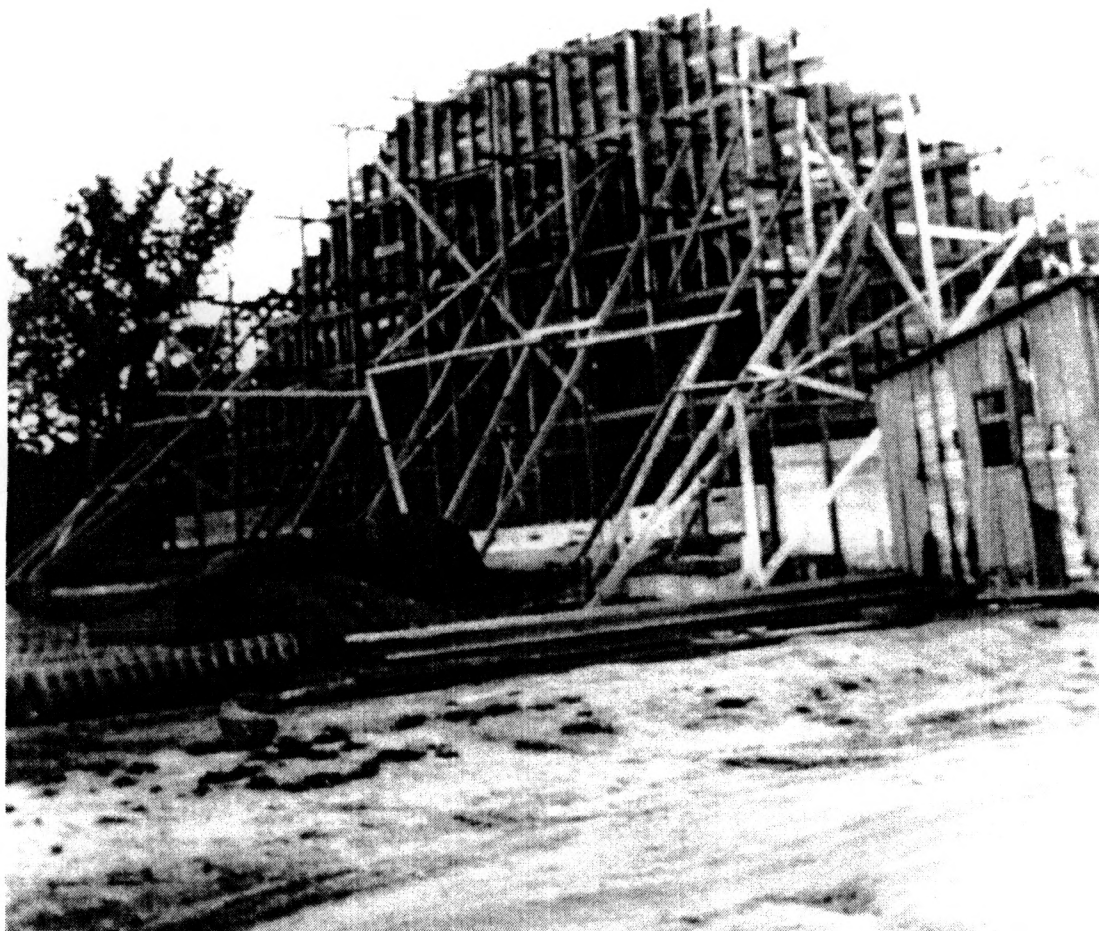
OMB No. 1024-0018

United States Department of the Interior
National Park Service

NATIONAL REGISTER OF HISTORIC PLACES
CONTINUATION SHEET

Section Historical Photos Page 24 OLESON PARK MUSIC PAVILION
Webster County, Iowa

=====



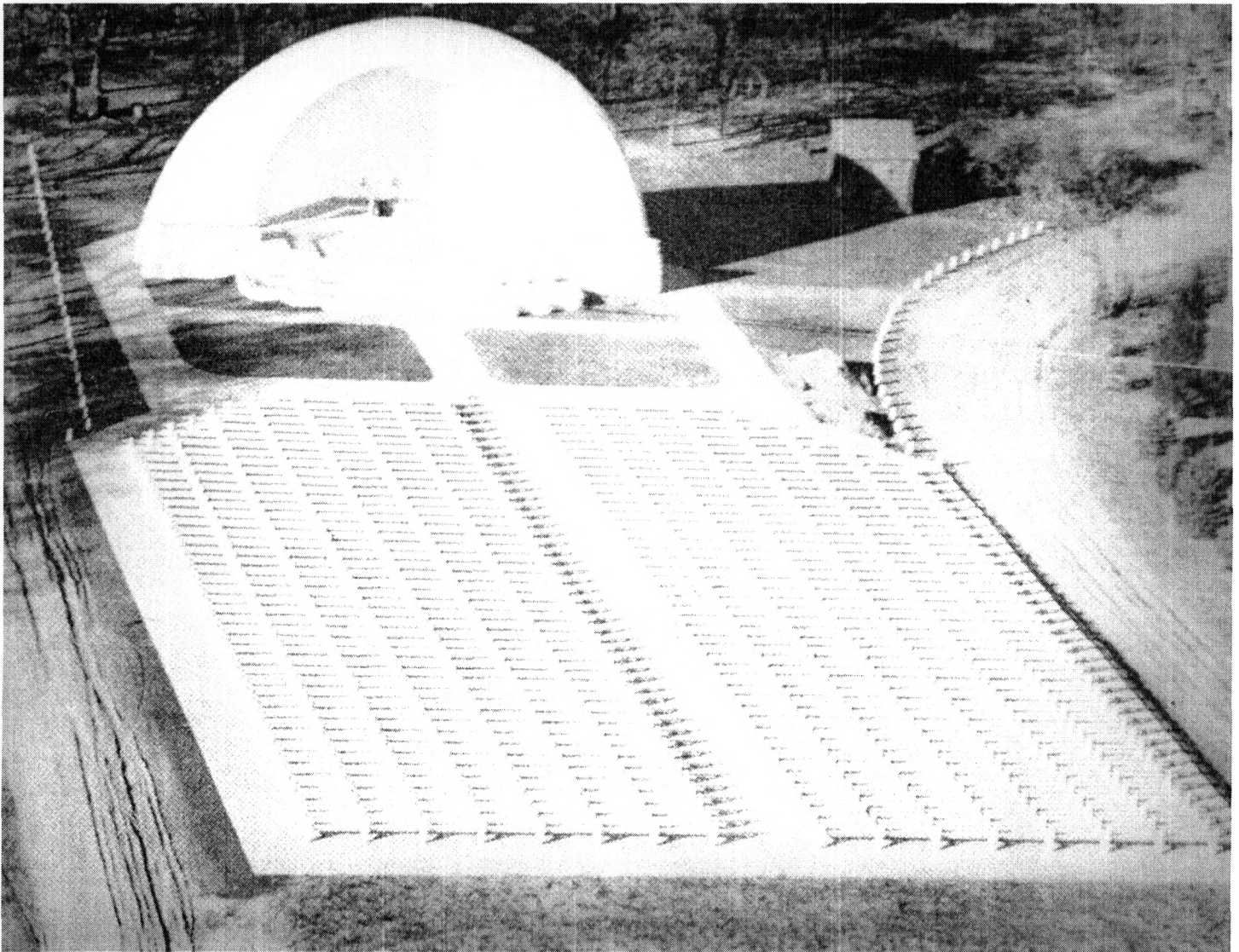
Historical Reproduction, c. 1938, Construction, looking NE
Source: Karl King Museum, Ft. Dodge Public Library, 400 Central Ave., Ft. Dodge, Iowa 50501

United States Department of the Interior
National Park Service

NATIONAL REGISTER OF HISTORIC PLACES
CONTINUATION SHEET

Section Historical Photos Page 25 OLESON PARK MUSIC PAVILION
Webster County, Iowa

=====



Historical Reproduction, c. 1938, Newly Completed Music Pavilion
Source: Karl King Museum, Ft. Dodge Public Library, 400 Central Ave., Ft. Dodge, Iowa 50501

United States Department of the Interior
National Park Service

NATIONAL REGISTER OF HISTORIC PLACES
CONTINUATION SHEET

Section Historical Photos

Page 26

OLESON PARK MUSIC PAVILION

Webster County, Iowa



Historical Reproduction, c. 1938, Dedication Ceremony of Music Pavilion
Source: Karl King Museum, Ft. Dodge Public Library, 400 Central Ave., Ft. Dodge, Iowa 50501

United States Department of the Interior
National Park Service

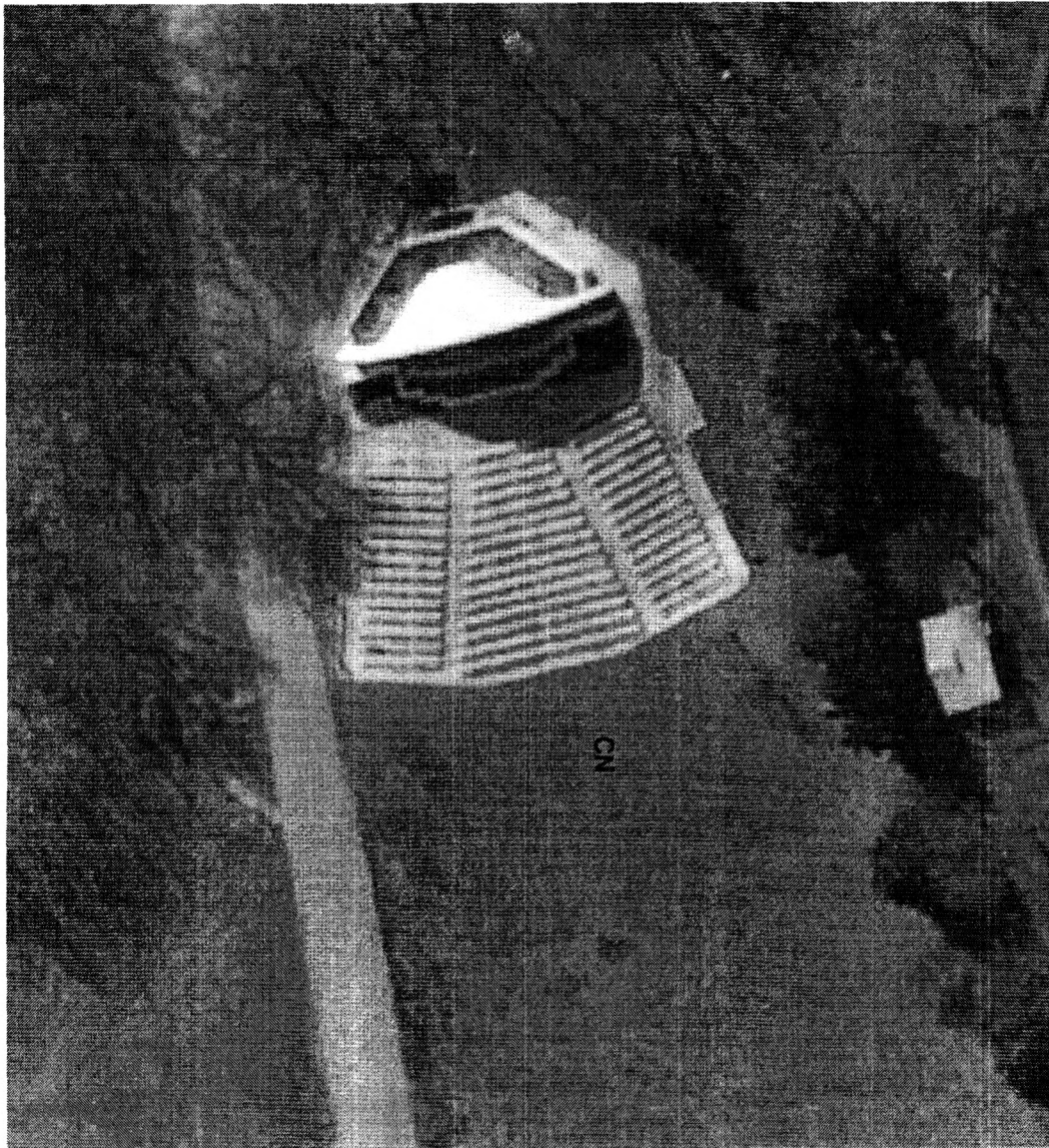
NATIONAL REGISTER OF HISTORIC PLACES
CONTINUATION SHEET

Section Historical Photos

Page 27

OLESON PARK MUSIC PAVILION

Webster County, Iowa



Historic Reproduction, c. 1976, Aerial photo of seating changes.
Source: Karl King Museum, Ft. Dodge Public Library, 400 Central Ave., Ft. Dodge, Iowa 50501