

**United States Department of the Interior
National Park Service**

**National Register of Historic Places
Inventory—Nomination Form**

For NPS use only

received

date entered

Continuation sheet

Item number N-6775

Page 1

INVENTORY FORM: WHITE CLAY CREEK HUNDRED MULTIPLE RESOURCE AREA

3. A. Property Name: Charles Allen House (N-6775)
855 Canoe Road
Newark, Delaware

B. Location and Verbal Boundary Description:

The Charles Allen House is located on the west side of the Christiana Creek at the end of Canoe Road. The house is situated on a 2.00 acre rectangular parcel measuring 308 feet by 284 feet (1982 New Castle County Property Tax Maps; Map Number 9-38, Parcel 51).

UTM Reference: 18/441840/4388500
U.S.G.S. Quadrangle: Newark East, Del.

C. Owner: Marvin and Anna Hershberger
855 Canoe Road
Newark, Delaware 19702

D. Property Description:

The Charles Allen House is a two story, three bay, single pile, gable-roofed dwelling dating from the first half of the nineteenth century. Abutting its east endwall is a late nineteenth/early twentieth century two story, one bay frame addition with a shed-roofed facade porch that overlaps the brick block by about a foot. Attached to the rear of the frame wing is a mid-twentieth century one story, flat-roofed, stuccoed addition.

The exterior walls of the main block are laid in seven course common bond over a rubble stone foundation that defines a full, raised basement. The rear wall and both gables have been covered with stucco. A rebuilt interior chimney rises between the two attic windows on the east endwall. The Allen House is built into a slight rise, so that the facade entrance is elevated and is approached by four concrete steps, while the rear elevation is at grade. Both the facade and rear have a symmetrical three bay, center door arrangement, however, the doorway on the rear elevation has been sealed. The facade entrance is composed of a simple molded surround and a rectangular transom that is surmounted by two projecting bands. The door itself is a replacement. The windows on the facade and rear are six-over-six sash on the second floor and three-over-one replacements on the first floor. A single six-over-six sash lights the west endwall at the northern end of its first floor.

The frame addition that is attached to the east endwall of the main block is two stories tall, but stands much lower than the main block. Its

United States Department of the Interior
National Park Service

National Register of Historic Places
Inventory—Nomination Form

For NPS use only

received

date entered

Continuation sheet

Item number N-6775

Page 2

INVENTORY FORM: WHITE CLAY CREEK HUNDRED MULTIPLE RESOURCE AREA

exterior walls are covered with aluminum siding on the facade and with asbestos shingle on its east endwall and rear elevation. The windows on this wing contain a variety of sash types including six-over-six, three-over-one, and one-over-one. The window frames are composed of plain flat board with molded dripboards. Its shed-roofed facade porch is supported by four square posts that rest on a concrete pad foundation. Some jigsaw trim brackets the posts and the eave line of the porch.

The only outbuilding that is associated with this house is a twentieth century shed located to the east. It is not being considered in this nomination.

E. Justification of Boundaries:

The nominated area includes the entire legal parcel (2.00 acres) on which the Charles Allen House is located. The original landholding totaled 152 acres and remained intact until a 1978 subdivision resulted in the selling off of several parcels surrounding the house.

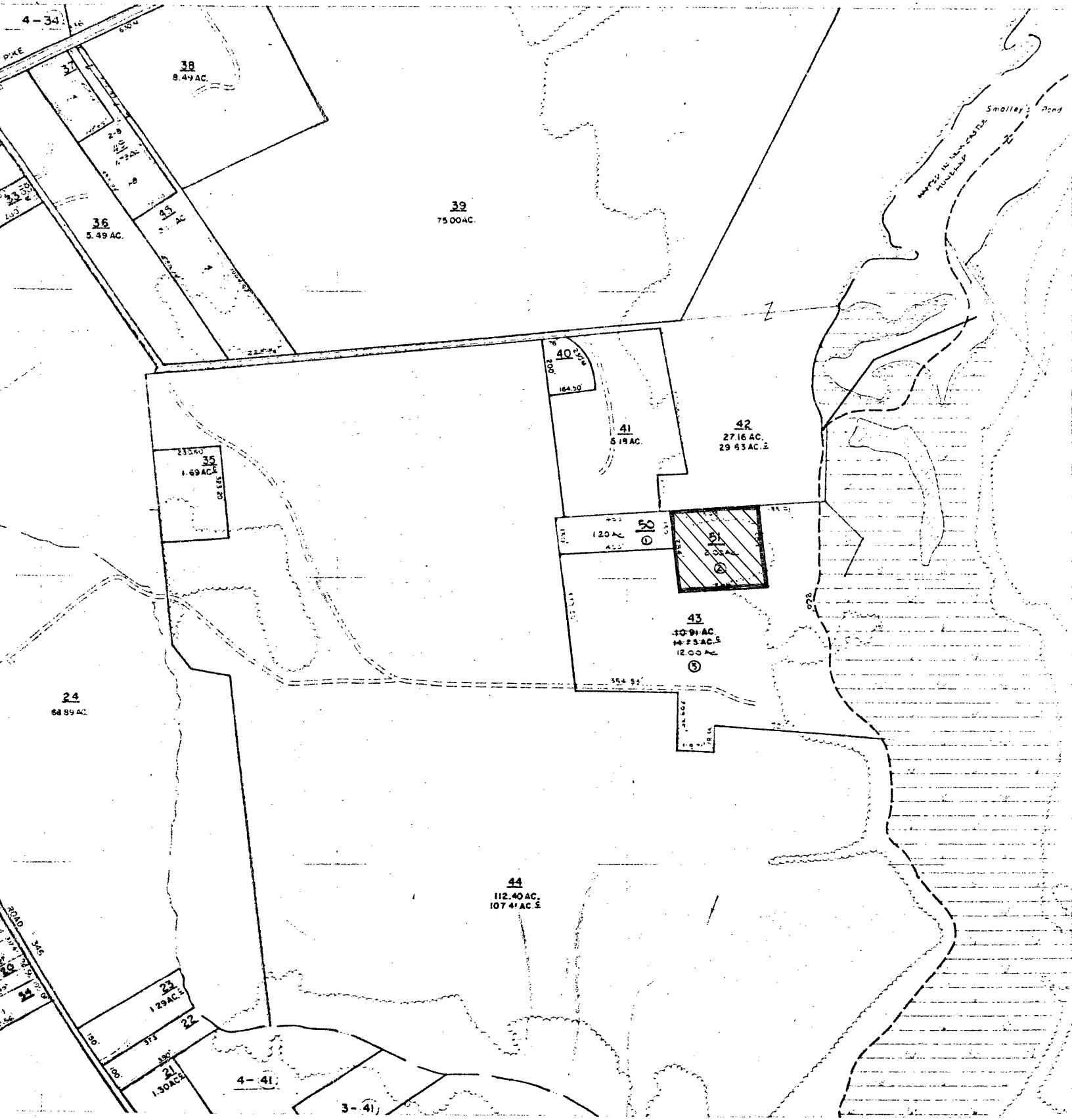
F. Significance:

The Charles Allen House is significant as a representative example of the center hall, single bay house type commonly found in Delaware during the mid-eighteenth and nineteenth centuries. It is being nominated to the National Register on the basis of criterion C, as it possesses the distinct characteristics of a type, period or method of construction.

The two story, gable-roofed, three bay plan executed in the Charles Allen House was a common house type during the eighteenth and nineteenth centuries not only throughout the State of Delaware, but all over the eastern part of the United States as well. In Delaware this type was most commonly constructed in frame and brick, however, many stone examples occur in the extreme northern portion of the State. Although this plan was popular for more than a century-and-a-half, the Charles Allen House is identifiable to the first half of the nineteenth century by its combination of seven course common bond brickwork, six-over-six sash windows and rectangular transom.

Level of Significance:

The level of significance claimed for the Charles Allen House is local since it is only a local example of a commonly found type.



SKETCH MAP



3. Charles Allen House (N-6755)
 New Castle County Property
 Tax Map, 1982
 Map No. 9-38, Parcel 51
 Scale 1 inch = 400 feet