



SPYE PARK CH-304
CHARLES COUNTY, MD.

J.R. RINDIRE

6/1990

SOUTHERN MARYLAND STUDIES CENTER
CHAS. CO. COMM. COLLEGE, LA PLATA, MD.

(#850088)

VIEW OF HOUSE FROM SOUTH

1/7



SPYE PARK CH-304
CHARLES COUNTY, MD.

J.R. RIVOIRE

611090

SOUTHERN MD. STUDIES CENTER

CHAS. CO. COMM. COLLEGE, LA PLATA, MD.

(# 850088)

VIEW OF HOUSE FROM SW

2/7



SPYE PARK CH-304
CHARLES COUNTY, MD.

J.R. RIVOIRE

611000

SOUTHERN MARYLAND STUDIES CENTER

CHAS. CO. COMM. COLLEGE, LA PLATA, MD.

(# 850088)

VIEW OF HOUSE FROM NE

3/7



SPYE PARK CH-304
CHARLES COUNTY, MD.

J.R. RIVDIRE

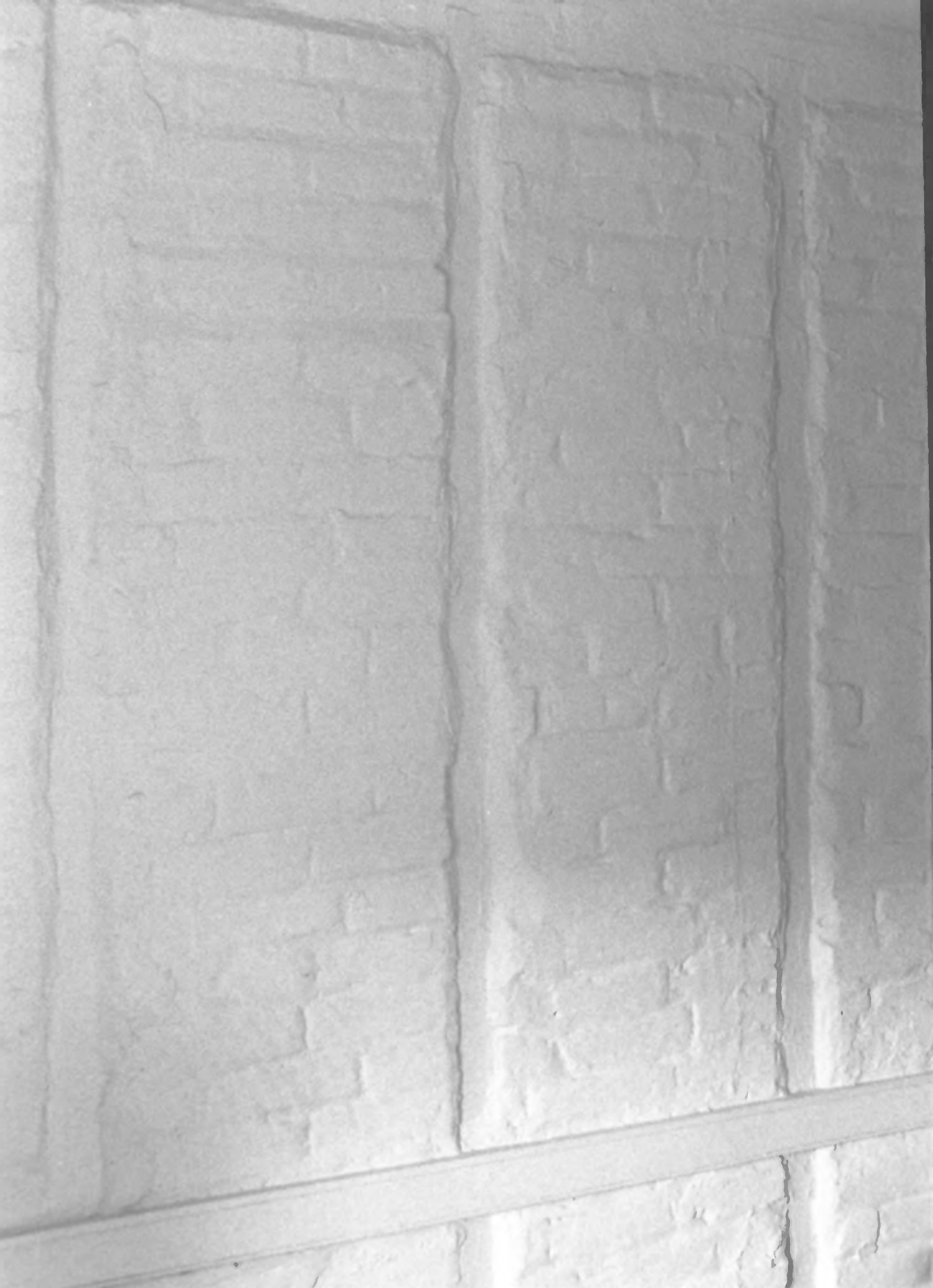
611990

SOUTHERN MARYLAND STUDIES CENTER
CHAS. CO. COMM. COLLEGE, LA PLATA, MD.

(# 850088)

N. WALL, SW FIRST FLOOR ROOM

4/7



SPYE PARK CH-304

CHARLES COUNTY, MD.

J.R. RIVOIRE

6/1990

SOUTHERN MARYLAND STUDIES CENTER

CHAS. CO. COMM. COLLEGE, LA PLATA, MD.

(#850088)

BRICK NOGGING, S. WALL, NE

FIRST FLOOR ROOM

5/7



SPYE PARK, CH-304
CHARLES COUNTY, MD.

J.R. RIVOIRE

6/1990

SOUTHERN MARYLAND STUDIES CENTER
CHAS. CO. COMM. COLLEGE, LAPLATA, MD.
(#850088)

VIEW OF BARNS FROM E-SE

6/7



SPYE PARK CH-304
CHARLES COUNTY, MD.

J. R. RIVOIRE

01/05/00

SOUTHERN MARYLAND STUDIES CENTER
CHAS. CO. COMM. COLLEGE, LAPLATA, MD.

(#850088)

DETAIL OF EAVE FRAMING OF HISTORIC BARN
COVERED BY LATER SHED

7/7