



John Hill (Keltomaki) Ranch
Roubaix Vicinity, South Dakota
Carolyn Torma
State Historical Preservation Center
Barn, looking northeast
Photo
1984



John Hill (Keltomaki) Ranch Photo 8

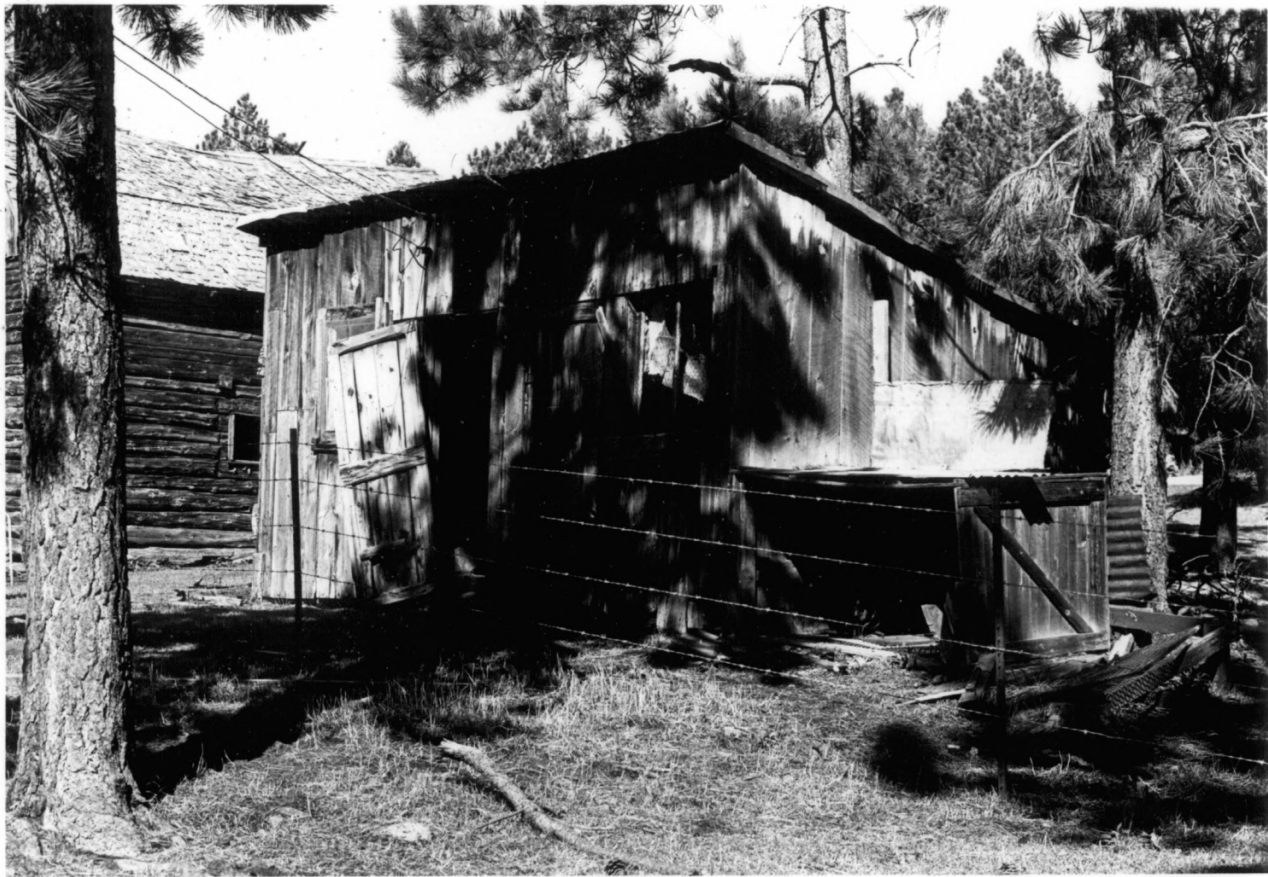
Roubaix, South Dakota

Carolyn Torma

State Historical Preservation Center

1984

Root Cellar, looking west



John Hill (Keltomaki) Ranch Photo 9

Roubais, South Dakota

Carolyn Torma

State Historical Preservation Center

1984

Frame Shed, looking southeast



John Hill (Keltomaki) Ranch Photo 10

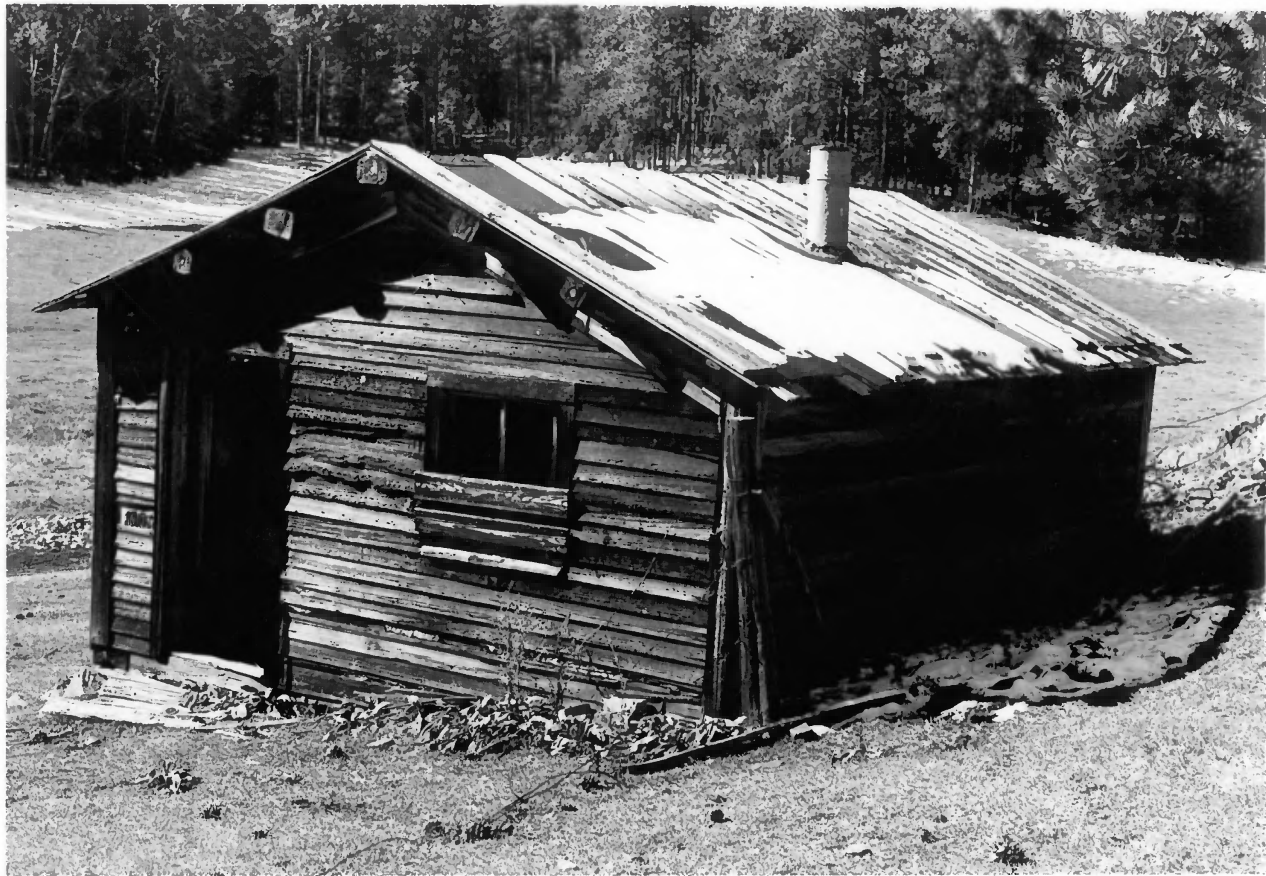
Roubaix, South Dakota

Carolyn Torma

State Historical Preservation Center

1984

Log Shed (granary), looking northeast



John Hill (Keltomaki) Ranch Photo 12
Roubaix, South Dakota
Carolyn Torma
State Historical Preservation Center
1984
Sauna, looking southwest



John Hill (Keltomaki) Ranch Photo 13

Roubaix, South Dakota

Carolyn Torma

State Historical Preservation Center

1984

Log Hog House, looking west



John Hill (Keltomaki) Ranch

Roubaix, South Dakota

Carolyn Torma

State Historical Preservation Center

1984

Sauna Kiuas (stove), looking north

Photo 14



John Hill (Keltomaki) Ranch

Roubaix, South Dakota

Carolyn Torma

State Historical Preservation Center

1984

Log Shed (granary), looking southeast

Photo 21



John Hill (Keltomaki) Ranch

Roubaix, South Dakota

Carolyn Torma

State Historical Preservation Center

1984

Notching on Log Barn, looking north

Photo 22



John Hill (Keltomaki) Ranch
Roubaix, Lawrence County, South Dakota
Carolyn Torma
State Historical Preservation Center
1984
House, looking north
Photo 49