

"Strengthen the Arm of Liberty" Monument

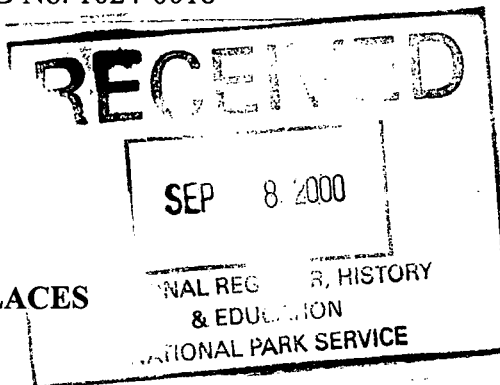
Name of Property

Jefferson County, Arkansas

County and State

NPS Form 10-900  
(Rev. 8-86)

OMB No. 1024-0018



1265

United States Department of the Interior  
National Park Service

**NATIONAL REGISTER OF HISTORIC PLACES  
REGISTRATION FORM**

**1. Name of Property**

Historic Name: "Strengthen the Arm of Liberty" Monument

Other Name/Site Number: JE0544S

**2. Location**

Street & Number: 10<sup>th</sup> Ave. between Georgia and State Streets

Not for Publication: NA

City/Town: Pine Bluff

Vicinity: NA

State: AR County: Jefferson Code: AR069 Zip Code: 71601

**3. Classification**

Ownership of Property: Public - local

Category of Property: Object

"Strengthen the Arm of Liberty" Monument  
Name of Property

Jefferson County, Arkansas  
County and State

Number of Resources within Property:

Contributing    Noncontributing

|          |          |            |
|----------|----------|------------|
| ___      | ___      | buildings  |
| ___      | ___      | sites      |
| ___      | ___      | structures |
| <u>1</u> | <u>0</u> | objects    |
| <u>1</u> | <u>0</u> | Total      |

Number of contributing resources previously listed in the National Register: NA

Name of related multiple property listing: NA

=====  
**4. State/Federal Agency Certification**  
=====

As the designated authority under the National Historic Preservation Act of 1986, as amended, I hereby certify that this X nomination \_\_\_ request for determination of eligibility meets the documentation standards for registering properties in the National Register of Historic Places and meets the procedural and professional requirements set forth in 36 CFR Part 60. In my opinion, the property X meets \_\_\_ does not meet the National Register Criteria. \_\_\_ See continuation sheet.

Cecilia Mathews      9/8/02  
Signature of certifying official      Date

Arkansas Historic Preservation Program  
State or Federal agency and bureau

Name of Property

County and State

Register criteria. See continuation sheet.

Signature of commenting or other official \_\_\_\_\_ Date \_\_\_\_\_

State or Federal agency and bureau

## 5. National Park Service Certification

I, hereby certify that this property is:

/ entered in the National Register \_\_\_\_\_

~~See continuation sheet.~~

— determined eligible for the \_\_\_\_\_  
National Register

See continuation sheet.

— determined not eligible for the \_\_\_\_\_  
National Register

removed from the National Register \_\_\_\_\_

\_\_\_ other (explain): \_\_\_\_\_

Harah D. Pope 11/01/00  
(for) Signature of Keeper Date  
of Action

"Strengthen the Arm of Liberty" Monument

Name of Property

Jefferson County, Arkansas

County and State

=====

## 6. Function or Use

=====

Historic: RECREATION AND CULTURE Sub: Monument/Marker

Current : RECREATION AND CULTURE Sub: Monument/Marker

=====

## 7. Description

=====

Architectural Classification:

Neoclassical

Materials: foundation CAST CONCRETE roof NA  
walls METAL/copper other \_\_\_\_\_

Describe present and historic physical appearance:

## SUMMARY

The "Strengthen the Arm of Liberty" Monument is an eight-foot tall copper replica of Frederick Auguste Bartholdi's "Liberty Enlightening the World," a sculpture better known as "The Statue of Liberty." It stands atop a three-and-one-half foot tall cast concrete base on a grassy median strip on 10<sup>th</sup> Avenue adjacent to the Pine Bluff Civic Center.

## ELABORATION

The "Strengthen the Arm of Liberty" Monument is an eight-foot tall copper replica of Frederick Auguste Bartholdi's "Liberty Enlightening the World," a sculpture better known as "The Statue of Liberty." It stands atop a three-and-one-half foot tall cast concrete base on a grassy median strip on 10<sup>th</sup> Avenue adjacent to the Pine Bluff Civic Center.

The statue depicts a standing female figure holding a lighted torch aloft in her proper right arm and a tablet cradled in her proper left arm. She is dressed in flowing, classical robes and adorned with a radiant crown. The statue shows signs of oxidation and is spotted with bird guano; it would benefit from conservation treatment. The statue stands

eight feet tall, two feet wide and two feet deep. The statue faces north.

It stands atop a tapering cast concrete base that is three and one-half feet tall and two and one-half feet wide and deep. The north side of the base features a bronze plaque that reads as follows: DEDICATED/TO BOY SCOUTS/WITH FAITH AND COURAGE OF/THEIR FOREFATHERS WHO MADE/POSSIBLE THE FREEDOM OF THESE/UNITED STATES./THE BOY SCOUTS OF AMERICA/DEDICATE THIS COPY OF THE/STATUE OF LIBERTY AS A PLEDGE/OF EVERLASTING FIDELITY AND/LOYALTY./40<sup>TH</sup> ANNIVERSARY CRUSADE TO/STRENGTHEN THE ARM OF LIBERTY/1950/BY/PINE BLUFF/KIWANIS AND LIONS/CLUBS.

The bronze has stained the base in places, and the base shows some signs of cracking. Though it would benefit from conservation treatment, the overall piece is in relatively good condition.

=====

**8. Statement of Significance**

=====

Certifying official has considered the significance of this property in relation to other properties: Statewide.

Applicable National Register Criteria: A

Criteria Considerations (Exceptions): F, B

Areas of Significance: SOCIAL HISTORY

\_\_\_\_\_  
\_\_\_\_\_  
\_\_\_\_\_  
\_\_\_\_\_  
\_\_\_\_\_

Period(s) of Significance: 1950

Significant Dates: Oct. 7, 1950

Significant Person(s): NA

\_\_\_\_\_

Cultural Affiliation: NA

Architect/Builder: Friedley Voshardt Co., Chicago

\_\_\_\_\_

\_\_\_\_\_

State significance of property, and justify criteria, criteria considerations, and areas and periods of significance noted above:

## **SUMMARY**

The "Strengthen the Arm of Liberty" Monument at Pine Bluff is eligible for listing on the National Register of Historic Places under Criterion A with statewide significance as one of only two Statue of Liberty replicas erected in Arkansas as part of a national campaign by the Boy Scouts of America between 1949 and 1951. It was moved to its present location from its original location in front of the Pine Bluff library on Fifth Avenue in the mid-1960s when the library's holdings and activities were moved to the newly opened Pine Bluff Civic Center. It still stands in a public space, however, and thus retains its integrity of setting, feeling and association, meeting the requirements of Criteria Consideration B. Since the monument was erected as a direct result of the national Boy Scout "Crusade to Strengthen the Arm of Liberty," the monument is directly associated with that event and is not commemorative in nature; thus, Criteria Consideration F is not relevant in relation to this object.

## **ELABORATION**

The Boy Scouts of America were incorporated on Feb. 8, 1910, bringing to America a program begun in Great Britain by Robert S.S. Baden-Powell. By 1912, Scouts were enrolled in every state in the Union. The Boy Scouts, with their famous motto "Be Prepared," participated in local and national efforts to offer assistance in patriotic campaigns. In 1917, "Scouting's full resources were placed at the service of the government, under the slogan 'Help Win the War,' and, within 24 hours, Scouts throughout the United States were so advised," according to the Boy Scouts of America web page. By 1919, the Scouts had developed a systematic method of developing cooperation with churches of all faiths, promoting an inclusive, egalitarian ethic that has remained a central tenet of Scouting.

The Cub Scouts, enrolling younger boys, were established in 1930 and by 1935, when the Scouts celebrated their Silver Jubilee, there were 1,027,833 active Boy Scouts in the U.S. In 1938, the Scouts' national program emphasized Americanism and a rededication to the U.S. Constitution and the Declaration of Independence. During World War II, the Scouts were again called to national service, participating in salvage drives, aiding in distribution of government pamphlets, and assisting in production and conservation projects. In one two-week drive, Scouts were credited with collecting 30 million pounds of rubber.

As the 40<sup>th</sup> anniversary of the Boy Scouts of America approached, Jack P. Whitaker, Scout commissioner of the Kansas City Area Council, conceived of a program to "impress upon the general public the citizenship training values of the Boy Scouts and to reawaken Americans to their heritage of freedom." The mechanism for this program was placement of small-scale replicas of Frederic Auguste Bartholdi's "Liberty Enlightening the World," better known as "The Statue of Liberty," across the country. Whitaker's crusade to "Strengthen the Arm of Liberty" kicked off in February 1949 with a dramatic ceremony at the base of the Statue of Liberty in New York Harbor. The first of some 200 of the small-scale, copper replicas through the program occurred on November 20, 1949, in Kansas

City, Missouri.

The statues were produced by the Friedley Voshardt Company of Chicago, a firm that specialized in metal ceiling manufacturing but devised a method of assembling 42 sheets of stamped copper around interior braces to create replica's of Bartholdi's famous work. They were sold for \$300 to \$350 each, and fund drives often combined both Scout troops and adult service organizations. Ultimately, around 200 of the statues were raised, the vast majority in the Midwest. Though a few were erected later, most were in place by the end of 1951. The 1990s Save Outdoor Sculpture! program identified about 100 surviving statues, about half of which are in serious need of repair.

The first statue erected in the south as part of the "Strengthen the Arm of Liberty" movement was placed in Pine Bluff, Arkansas, as the result of a joint effort of local Boy Scouts and the Pine Bluff Kiwanis and Lions Clubs. In announcing the upcoming ceremony to dedicate the statue, the *Pine Bluff Commercial* said the dedication "is the climax to a year of intensive scouting activity in the Tri-County District (Jefferson, Lincoln and Grant Counties)."

On Oct. 6, 1950, the *Commercial* announced that the Pine Bluff statue dedication "is the first such presentation in Boy Scout Region 5," which includes Arkansas, Texas, Louisiana, Tennessee, Alabama, Georgia, Florida, Mississippi and Kentucky.

The main speaker at the Oct. 7, 1950, dedication was Sen. John McClellan, who waxed purple at the ceremony, declaring that "All true Americans cherish and revere our heritage of liberty. Millions of our youths have so appraised and loved it that they have fought and died on land, on the sea, and in the air, on foreign battlefields in two World Wars, and are now fighting in Korea, that freedom might not perish from the earth. Only by vigilance and by emulating the Boy Scout's motto, 'Be Prepared,' can we hope to prevent another world catastrophe . . . ." The Kiwanis and Lions presented the statue to the Boy Scouts, who in turn donated it to the City of Pine Bluff. An estimated 1,000 people attended the dedication and watched a parade of 200 Boy Scouts and four marching bands.

The "Strengthen the Arm of Liberty" crusade ended in 1951, with the Boy Scouts of America reporting a 33 percent increase in membership, a total of 2,942,779 active Scouts.

The "Strengthen the Arm of Liberty Monument" stood in front of the Pine Bluff Library on Fifth Avenue from 1950 to the mid-1960s, when the library and Pine Bluff city offices moved to the new, Edward Durrell Stone-designed Pine Bluff Civic Center. Since that date, it has stood at the center of a grassy median adjacent to the Civic Center, still standing tall as a symbol of liberty and a reminder of the national Boy Scout campaign that resulted in its placement in Pine Bluff.

The "Strengthen the Arm of Liberty" Monument at Pine Bluff is eligible for listing on the National Register of Historic Places under Criterion A with statewide significance as one of only two Statue of Liberty replicas erected in Arkansas as part of a national campaign by the Boy Scouts of America between 1949 and 1951. It was moved to its present location from its original location in front of the Pine Bluff library on Fifth Avenue in the mid-1960s when the library's holdings and activities were moved to the newly opened Pine Bluff Civic Center. It still stands in a public space, however, and thus retains its integrity of setting, feeling and association, meeting the requirements of Criteria Consideration B. Since the monument was erected as a direct result of the national Boy Scout "Crusade

"Strengthen the Arm of Liberty" Monument  
Name of Property

Jefferson County, Arkansas  
County and State

=====

## 10. Geographical Data

=====

Acreage of Property: Less than one

UTM References: Zone Easting Northing    Zone Easting Northing

A 15 592040 3786760 B           
C          D         

Verbal Boundary Description:

An area around the monument defined by a 25-foot radius centered on the monument itself.

Boundary Justification:

This boundary includes all the property historically associated with this resource.

=====

## 11. Form Prepared By

=====

Name/Title: Mark Christ/Community Outreach Director

Organization: Arkansas Historic Preservation Program Date: September 7, 2000

Street & Number: 1500 Tower Bldg., 323 Center St. Telephone: (501) 324-9880

City or Town: Little Rock State: AR ZIP: 72201



United States Department of the Interior  
National Park Service

National Register of Historic Places  
Continuation Sheet

Section number \_\_\_\_\_ Page \_\_\_\_\_

SUPPLEMENTARY LISTING RECORD

NRIS Reference Number: 00001265

Date Listed: 11/01/00

Property Name: Strengthen the Arm of Liberty Monument--Pine Bluff

County: Jefferson State: AR

Multiple Name: N/A

-----  
This property is listed in the National Register of Historic Places in accordance with the attached nomination documentation subject to the following exceptions, exclusions, or amendments, notwithstanding the National Park Service certification included in the nomination documentation.

(for) Arval D. Pope  
Signature of the Keeper

11/01/00  
Date of Action

=====

**Amended Items in Nomination:**

The Boundary Description is hereby amended to:

“Beginning at the northwestern corner of the monument's foundation (located in the center of the grassy median strip about 25 feet south of the southern edge of Tenth Street at the approximate midpoint between Georgia and State Streets), proceed southerly to the southwestern corner of the monument's foundation; thence easterly to the southeastern corner of the monument's foundation; thence northerly to the northeast corner of the monument's foundation; thence westerly to the northwestern corner of the monument's foundation and the point of beginning.”

The Verbal Boundary Description is hereby amended to:

“The ‘Strengthen the Arm of Liberty’ Monument at Pine Bluff was moved to its present location from a site in front of the Pine Bluff library on Fifth Avenue when the library's holdings and activities were moved to the new Pine Bluff Civic Center in the mid-1960s. It's new location is still closely associated with the library and civic progress, however, enabling the statue to retain its integrity of setting, feeling and association.”

Criterion Consideration F is hereby deleted since Section 8 of the narrative successfully documents the statue's primarily non-commemorative significance.

This information was confirmed with Mark Christ of the Arkansas SHPO.

**DISTRIBUTION:** National Register property file; Nominating Authority (without nomination attachment)

UNITED STATES DEPARTMENT OF THE INTERIOR  
NATIONAL PARK SERVICE

NATIONAL REGISTER OF HISTORIC PLACES  
EVALUATION/RETURN SHEET

REQUESTED ACTION: NOMINATION

PROPERTY Strengthen the Arm of Liberty Monument--Pine Bluff  
NAME:

MULTIPLE  
NAME:

STATE & COUNTY: ARKANSAS, Jefferson

DATE RECEIVED: 9/28/00 DATE OF PENDING LIST: 10/10/00  
DATE OF 16TH DAY: 10/26/00 DATE OF 45TH DAY: 11/12/00  
DATE OF WEEKLY LIST:

REFERENCE NUMBER: 00001265

REASONS FOR REVIEW:

APPEAL: N DATA PROBLEM: N LANDSCAPE: N LESS THAN 50 YEARS: N  
OTHER: N PDIL: N PERIOD: N PROGRAM UNAPPROVED: N  
REQUEST: N SAMPLE: N SLR DRAFT: Y NATIONAL: N

COMMENT WAIVER: N

☒ ACCEPT ☐ RETURN ☐ REJECT 11/01/00 DATE

ABSTRACT/SUMMARY COMMENTS:


The Strengthen the Arm of Liberty statue is significant under Criterion A for its association with the Boy Scouts' campaign at its 50<sup>th</sup> anniversary to promote patriotism and gain new members. At the end of the campaign in 1951, the Boy Scouts reported a 33% increase in membership. The statue does not meet Criterion Consideration F since its significance is primarily non-commemorative. Though moved, the statue retains integrity of setting, feeling, and association.

RECOM./CRITERIA A

REVIEWER Sarah Pope DISCIPLINE Historian

TELEPHONE 202/343-9534 DATE 11/01/00

DOCUMENTATION see attached comments Y/N see attached SLR (Y)/N



DEDICATED TO  
BOY SCOUTS OF AMERICA



BY  
PINE BLUFF  
KIWANIS <sup>AND</sup> LIONS  
CLUBS



"Strengthen the Arm of Liberty" Monument  
Pine Bluff, Jefferson Co., Arkansas

Photo by H. Hope

June 2000

Negative on file at AHPP

North side detail



"Strengthen the Arm of Liberty" Monument  
Pine Bluff, Jefferson Co., Arkansas

Photo by H. Hope

June 2000

Negative on file at AHPP

View from northwest





"Strengthen the Arm of Liberty" Monument  
Pine Bluff, Jefferson Co, Arkansas

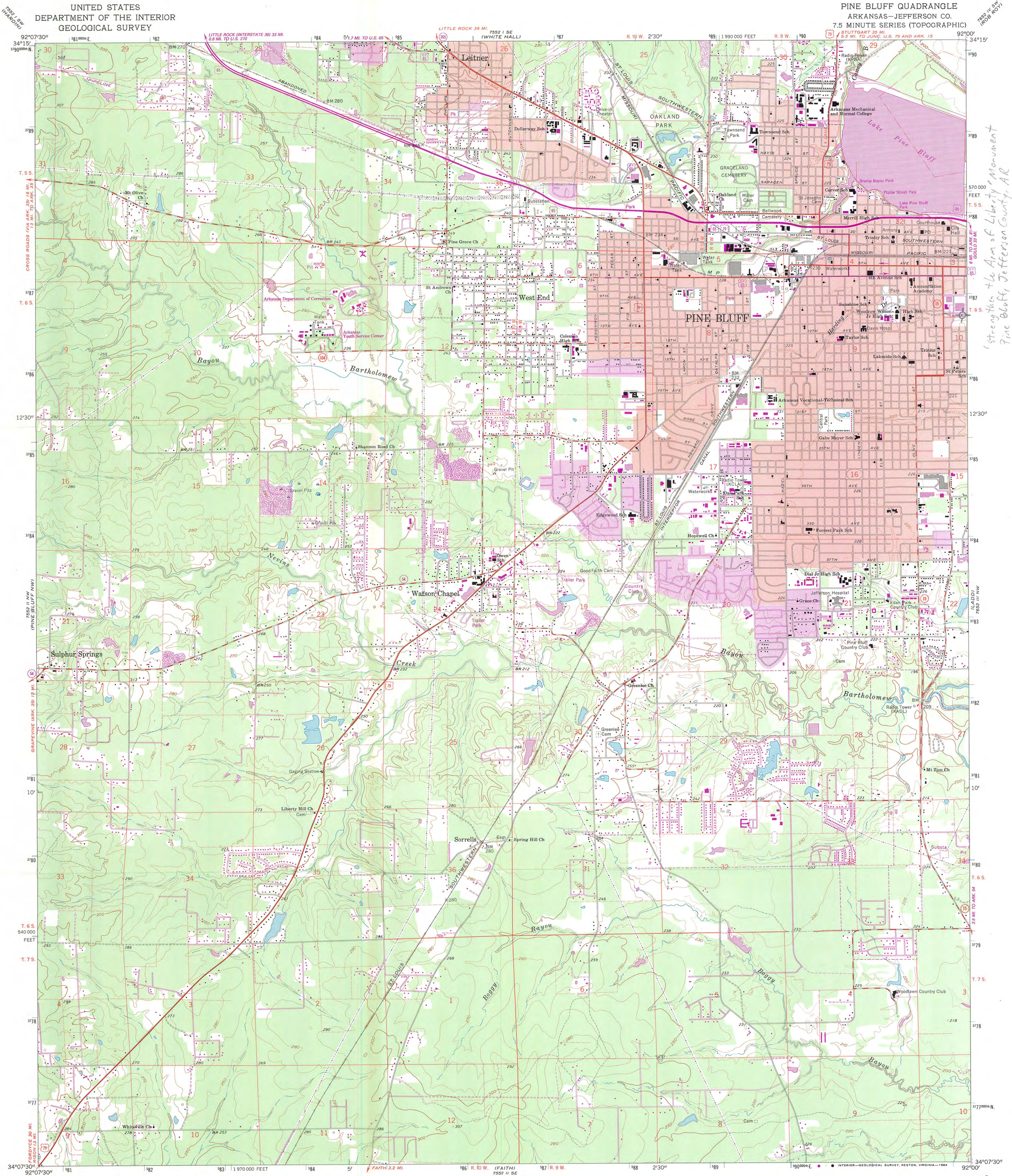
Photo by H. Hope

June 2000

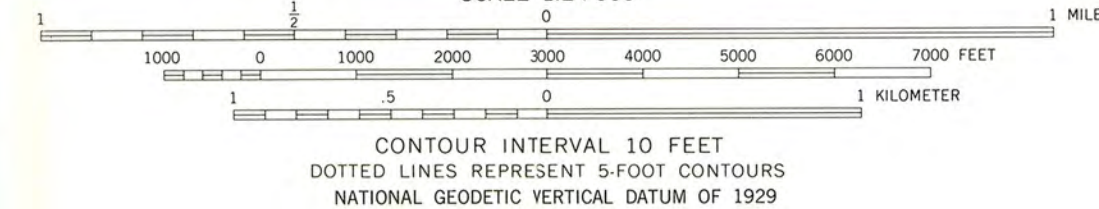
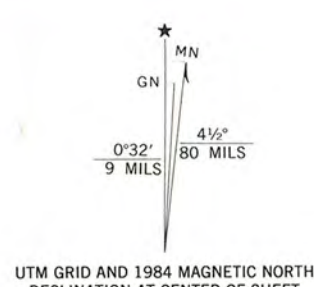
Negative on file at AHPP

View from South





Mapped, edited, and published by the Geological Survey  
Control by USGS and USC&GS  
Planimetry by photogrammetric methods from aerial photographs  
taken 1961. Topography by planetable surveys 1961-62  
Polyconic projection. 1927 North American datum  
10,000-foot grid based on Arkansas coordinate system, south zone  
1000-meter Universal Transverse Mercator grid ticks,  
zone 15, shown in blue  
Red tint indicates areas in which only landmark buildings are shown  
To place on the predicted North American Datum 1983,  
move the projection lines 9 meters south and  
13 meters east as shown by dashed corner ticks



THIS MAP COMPLIES WITH NATIONAL MAP ACCURACY STANDARDS  
FOR SALE BY U. S. GEOLOGICAL SURVEY, DENVER, COLORADO 80225, OR RESTON, VIRGINIA 22092  
AND ARKANSAS GEOLOGICAL COMMISSION, LITTLE ROCK, ARKANSAS 72204  
A FOLDER DESCRIBING TOPOGRAPHIC MAPS AND SYMBOLS IS AVAILABLE ON REQUEST



ROAD CLASSIFICATION  
Heavy-duty ——— Light-duty ———  
Medium-duty ——— Unimproved dirt ———  
U.S. Route ——— State Route ———

PINE BLUFF, ARK.  
34092-B1-TF-024

1962  
PHOTOREVISED 1984  
DMA 7552 II NE—SERIES Y884

Strengthen the Arm of Liberty Monument  
Pine Bluff, Jefferson County, AR  
15/592049/3786760





# The Department of Arkansas Heritage

WE LOVE TO TELL  
THE STORY.

Mike Huckabee, Governor  
Cathie Matthews, Director

Arkansas Arts Council

Arkansas Natural Heritage  
Commission

Arkansas Territorial Restoration

Delta Cultural Center

Old State House Museum



## Arkansas Historic Preservation Program

1500 Tower Building  
323 Center Street  
Little Rock, AR 72201  
(501)324-9880  
fax: (501)324-9184  
tdd: (501)324-9811

e-mail:  
info@arkansaspreservation.org  
website:  
www.arkansaspreservation.org

September 7, 2000

Carol D. Shull  
Chief of Registration  
United States Department of the Interior  
National Register of Historic Places  
National Park Service  
Suite 400  
800 North Capitol Street, NW  
Washington, D.C. 20002

RE: "Strengthen the Arm of Liberty" Monument, Pine Bluff, Jefferson  
County, AR  
"Strengthen the Arm of Liberty" Monument, Fayetteville,  
Washington County, AR

Dear Ms. Shull:

We are enclosing for your review the above-referenced nominations. The Arkansas Historic Preservation Program has complied with all applicable nominating procedures and notification requirements in the nomination process.

Thank you for your consideration in this matter.

Sincerely,

Cathie Matthews  
State Historic Preservation Officer

enc.

An Equal Opportunity Employer

