



BLAIR BOULEVARD COMMERCIAL AREA

EUGENE, LANE COUNTY, OREGON

ENTRY TO BLAIR BOULEVARD COMMERCIAL AREA FROM SOUTH
ON BLAIR BOULEVARD AT FIFTH AVENUE

Z OF 70; PR 2



BLAIR BOULEVARD COMMERCIAL AREA
EUGENE, LANE COUNTY, OREGON

WESTSIDE BLAIR BOULEVARD, LOOKING NORTH TO
FOURTH AVENUE.

3 OF 70; PR 3



BLANK BLVD. COMMERCIAL AREA
EUGENE, LANE CO., OREGON

I #1, 11, 24

LANE COUNTY HISTORICAL MUSEUM



Blair, BLVD. COMMERCIAL AREA, EUGENE, LANE CO., OR
H. 2 of 16 ; I # 1, 11

LANE COUNTY HISTORICAL MUSEUM

LCHM - #1313/176-284D



H3 of 16 Blair, Blvd COMMERCIAL AREA

EUGENE, LANE CO., OREGON

I# 1, 11, 24

LANE COUNTY HISTORICAL MUSEUM



4 of 16 Blair, Blvd. COMMERCIAL AREA
EUGENE, LANE CO., OREGON

I #24

LANE COUNTY HISTORICAL MUSEUM

BLAIR

LCHM-~~#15L~~/L75-1131



H. 5 of 16

Blair, BLVD. COMMERCIAL AREA

EUGENE, LANE CO., OREGON

I# 1, 11, 24

LANE COUNTY HISTORICAL MUSEUM

LCHM - #13A3/LTB-249



6 of 16 Blair, BLVD. COMMERCIAL AREA
EUGENE, LANE CO., OREGON

I # 1

CITY OF EUGENE PLANNING DEPT.

HAYSE
BLACKSMITHING

PRACTICAL
WHEEL WORK



H 7 of 16 Blair BLVD. COMMERCIAL AREA

EUGENE, LANE CO., OREGON

I # 17

CITY OF EUGENE PLANNING DEPT.



H8 of 16 Blair BLVD. COMMERCIAL AREA
EUGENE, LANE CO., OREGON
LANE COUNTY HISTORICAL MUSEUM

This photoprint is issued for reference use only. Further reproduction
in any form must be requested from:

Lane County Historical Museum
740 West 13th Avenue
Eugene, OR 97402

NEGATIVE NUMBER: # 13E / L80-652
DESCRIPTION: OVERVIEW -

Image cropped from above #.



9 of 16 Blair BLDG COMMERCIAL AREA

EUGENE, LANE CO., OREGON

LANE COUNTY HISTORICAL MUSEUM



H 10 of 16 Blair, BLVD COMMERCIAL AREA

EUGENE, LANE CO., OREGON

I#2

CITY OF EUGENE PLANNING DEPT.



H 11 of 16 Blair, BLVD. COMMERCIAL AREA

EUGENE, LANE CO., OREGON

CITY OF EUGENE PLANNING DEPT.

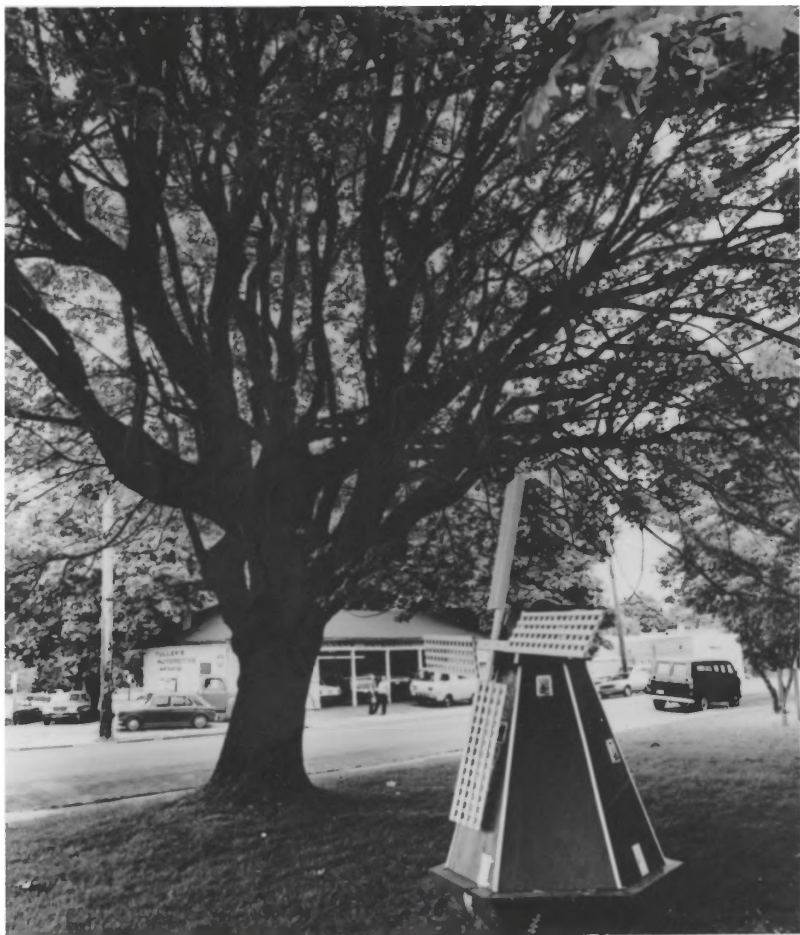


12 of 16 Blair BLVD. COMMERCIAL AREA

EUGENE, LANE CO, OREGON

I # 2, 24

CITY OF EUGENE PLANNING DEPT



13 of 16 Blair BLVD COMMERCIAL AREA

EUGENE, LANE CO., OREGON

I # 15

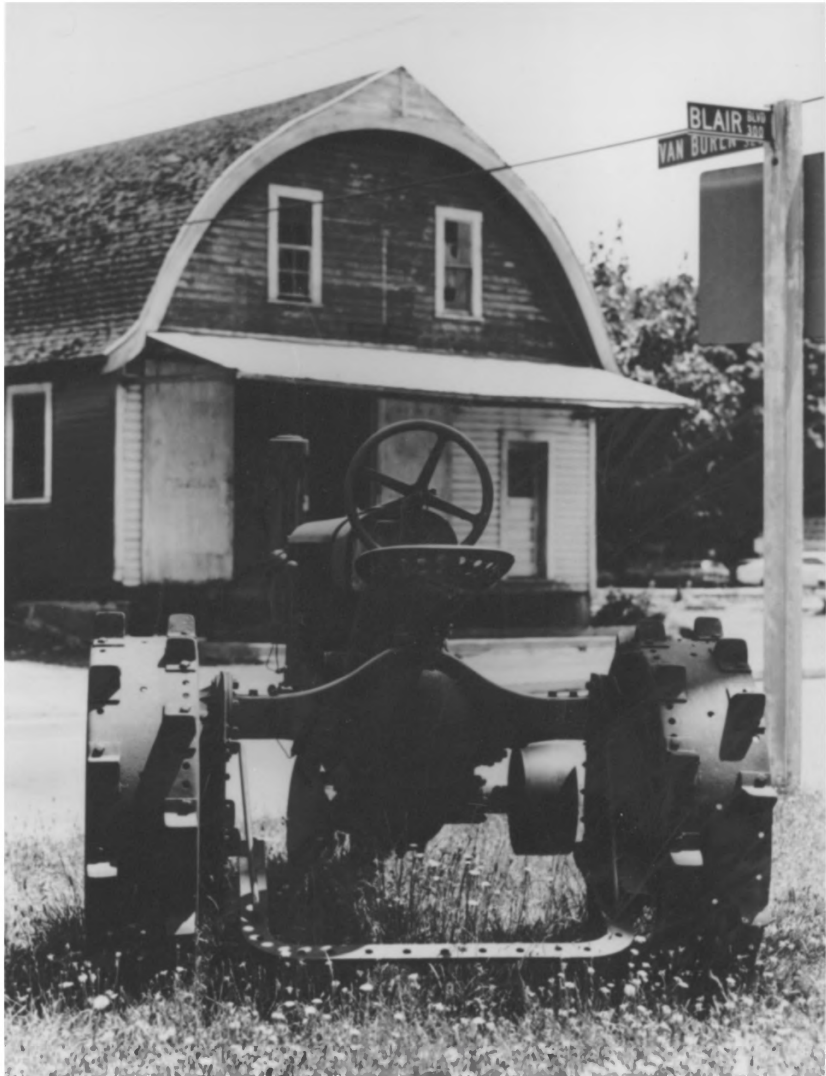
LANE COUNTY HISTORICAL MUSEUM



H 14 of 16 Blair BLVD. COMMERCIAL AREA

EUGENE, LANE COUNTY, OREGON

CITY OF EUGENE PLANNING DEPT.



H. 15 of 16 Blais BLVD COMMERCIAL AREA

EUGENE, LANE CO., OREGON

J#-1

CITY OF EUGENE PLANNING DEPT.



H. 16 of 16, Blaes, BLVD. COMMERCIAL AREA

EUGENE, LANE CO., OREGON

I#18

CITY OF EUGENE PLANNING DEPT



BLAIR BOULEVARD COMMERCIAL AREA

EUGENE, LANE COUNTY, OREGON

ENTRY TO BLAIR BOULEVARD COMMERCIAL AREA FROM NORTH
ON VAN BUREN STREET AT THIRD AVENUE

1 OF 70 ; PR 1



TINY TAVERN

BLAIR BOULEVARD COMMERCIAL AREA
EUGENE, LANE COUNTY, OREGON

HEART OF BLAIR BOULEVARD COMMERCIAL AREA. LOOKING
NORTH AT FOURTH AVENUE, BLAIR BOULEVARD, & VAN
BUREN STREET

4 OF 70 ; PE 4



WELLS
NATIONAL
FEDERAL
Savings
Bank

NO
LEFT
TURN

Every
BROODSOM
FEED & SEED

CROWN FEEDS

EXCELLENT
SATISFACTION
1/10 1/8

WELCOME

WE CAN
GIVE YOU
WHAT YOU
NEED

BLAIR BOULEVARD COMMERCIAL AREA
EUGENE, LANE COUNTY, OREGON

EASTSIDE VAN BUREN STREET BETWEEN BLAIR
BOULEVARD AND THIRD AVENUE, LOOKING NORTH.

5 OF 70; PR 5



BLAIR BOULEVARD COMMERCIAL AREA
EUGENE, LANE COUNTY, OREGON

BLAIR BOULEVARD, LOOKING NORTH NEAR FOURTH AVENUE,

6 OF 70; PR6; I-111



BLAIR BOULEVARD COMMERCIAL AREA

EUGENE, LANG COUNTY, OREGON

ORIGINAL TINY TAVERN, 400 BLAIR BOULEVARD, NORTHEAST
CORNER

7 OF 10 ; PR 1 ; I # 2



BLAIR BOULEVARD COMMERCIAL AREA
EUGENE, LANE COUNTY, OREGON

ORIGINAL TINY TAVERN, 400 BLAIR BOULEVARD,
NORTH FACADE

8 OF 70 ; PR 8 , I # 2



~~BLAIR~~ BOULEVARD COMMERCIAL AREA
EUGENE, LANE COUNTY, OREGON

ORIGINAL TINY TAVERN, 400 BLAIR BOULEVARD,
SOUTHEAST CORNER

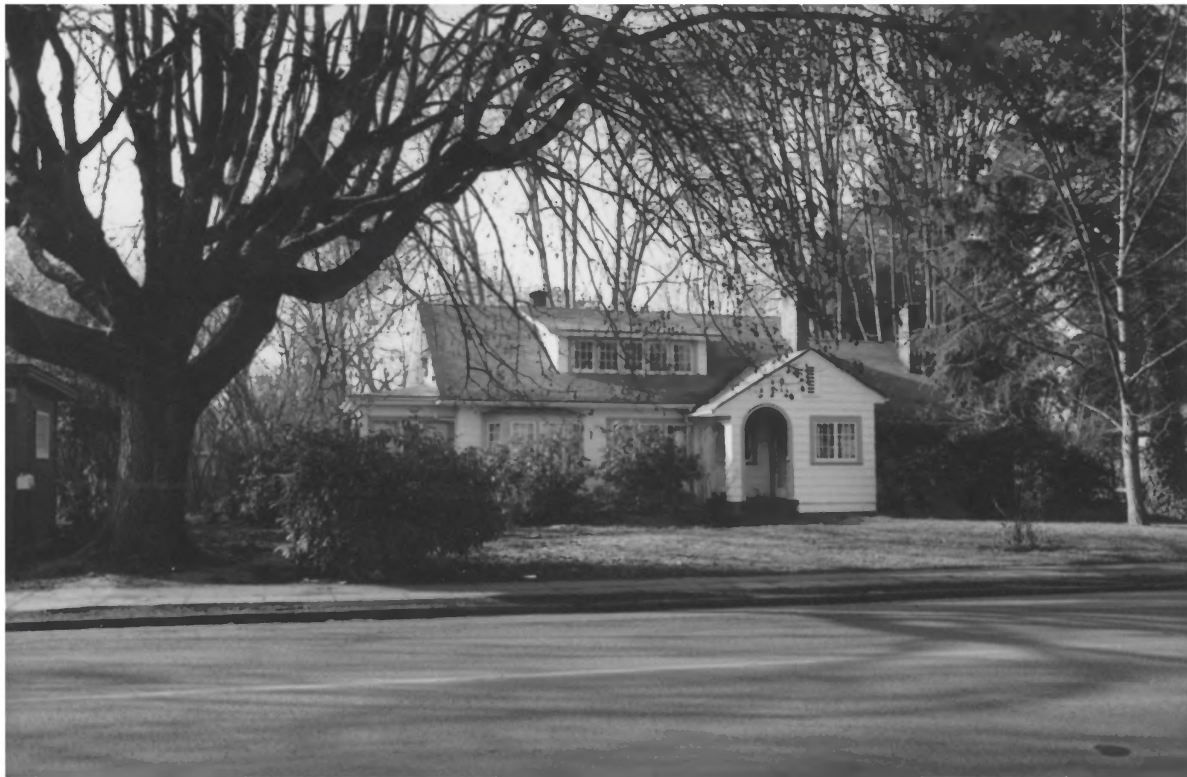
9 OF 70; PR9, T#2



BLAIR BOULEVARD COMMERCIAL AREA
EUGENE, LANE COUNTY, OREGON

THE SCOBERT HOUSE, 440. BLAIR BOULEVARD,
FRONT (EAST) ELEVATION

10. OF 70., PR 10, I # 3



BLAIR BOULEVARD COMMERCIAL AREA

EUGENE, LANE COUNTY, OREGON

THE SCOBERT HOUSE, 440 BLAIR BOULEVARD,

FROM SOUTHEAST

11 OF 70; PIC 11; I# 3



BLAIR BOULEVARD COMMERCIAL AREA
EUGENE, LANE COUNTY, OREGON

THE SCOBERT HOUSE, 440 BLAIR BOULEVARD,
ENTRY, EAST FACADE

12 OF 70; PR 17 J-#3



BLAIR¹⁰ BOULEVARD COMMERCIAL AREA
EUGENE, LANE COUNTY, OREGON

THE SCOBERT HOUSE, 440 BLAIR BOULEVARD
SOUTHWEST CORNER & SCOBERT PROPERTY

13 OF 70, PR 13, I #8



BLAIR BLVD. COMMERCIAL AREA
EUGENE, LANE CO., OREGON

THE SCOBERT HOUSE, 440 BLAIR BLVD.
SOUTH SUN PORCH

14 OF 70; PR 14; I#3



BLAIR BLVD. COMMERCIAL AREA
EUGENE, LANE CO., OREGON

444 BLAIR BLVD.

ENTRY, EAST FACADE, SOUTH WING

15 OF 70 ; PR 15 ; J#4

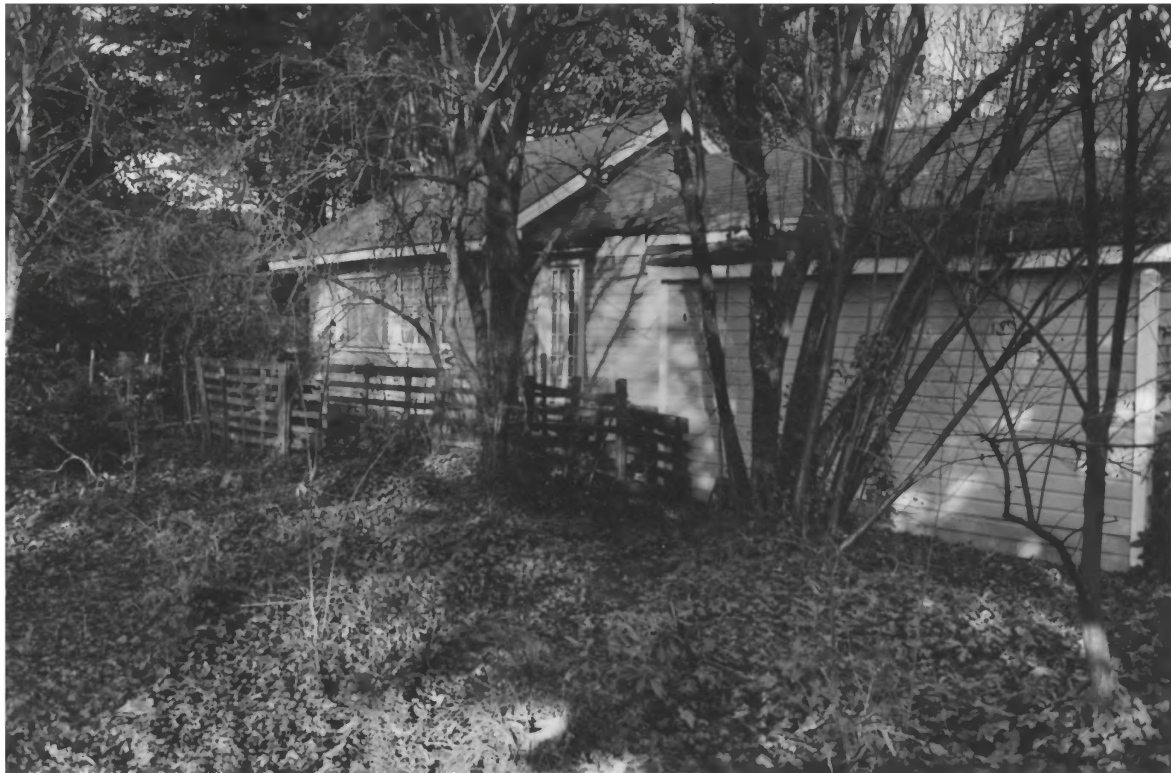


BLAIR BLVD. COMMERCIAL AREA
EUGENE, CLATSOP COUNTY, OREGON

444 BLAIR BLVD

EAST FACADE, EAST WING, ORIGINAL WELL
SITE & SCOBERT PROPERTY, I#8 IN FOREGROUND

16 OF 70; PR 16; I#14



BLAIR BLVD. COMMERCIAL AREA

EUGENE, LANE CO., OREGON

444 BLAIR BLVD

WEST FACADE, SOUTH & NORTH WINGS

17 OF 70; PR 17; #4



BLAIR BLVD. COMMERCIAL AREA
EUGENE, LANE CO., OREGON

440 1/2 BLAIR BOULEVARD
NW CORNER

18 OF 70; PR 18; I # 5



BLAIR BLVD. COMMERCIAL AREA
EUGENE, LANE CO., OREGON

440 1/2 BLAIR BOULEVARD
FRONT (EAST) FACADE

19 OF 70; PR 19; I#5



BLAIR FLD. COMMERCIAL AREA
EUGENE, LANE CO., OREGON

450 1/2 BLAIR BLVD
N.W. CORNER

20 OF 70 ; PR 70 ; I # 6



BLAIR BLVD. COMMERCIAL AREA
EUGENE, LANE COUNTY, OREGON

450'± BLAIR BLVD

GARAGE & BEDROOM EXTENSION FROM N.E.

21 of 70 ; PR 21 ; J # 4



BLAIR BLVD. COMMERCIAL AREA
EUGENE, LANE CO., OREGON

1100 W. 4th AVE.

FRONT (NORTH) FACADE

22 OF 70 ; PR 22 ; I # 7



BLAIR BLVD. COMMERCIAL AREA
EUGENE, LANE CO., OREGON

LARGE MAPLES ON SCOBETT PROPERTY,
LOOKING NORTH

23 OF 70; PR 23; I 118



BLAIR BLVD. COMMERCIAL AREA
EUGENE, LANE CO., OREGON

~~#7~~ SCOBERT PARK AND I#8 SCOBERT PROPERTY
LOOKING EAST

24 OF 70; PR 20, I#9, I#10



BEATR BLVD COMMERCIAL AREA
EUGENE, LANE CO., OREGON

SCOBERT PARK
LOOKING EAST

ZS OF 70, PR 25; J#9



BLAIR BLVD. COMMERCIAL AREA
EUGENE, LANE CO., OREGON

SCOBERT PARL
LOOKING N.E.

26 OF 70; PR 26; I#19



BLAIR BLVD COMMERCIAL AREA
EUGENE, LANE CO, OREGON

THE KOEPP HOUSE
458 BLAIR BLVD
FRONT (EAST) FACADE

27 OF 70; PR 27; J. #10



BLAIR BLVD. COMMERCIAL AREA
EUGENE, LANE CO., OREGON

THE C. W. POWELL HOUSE
1125 W. 5th AVENUE
FROM NORTHEAST

28 of 70 ; PR 28 ; I# 11



BLAIR BLVD. COMMERCIAL AREA
EUGENE, LANE CO., OREGON

THE C.W. POWELL HOUSE
1125 WEST 5th AVENUE
FROM NORTHEAST

29 OF 70; PR 29; I# 11



BLAIR BLVD. COMMERCIAL AREA
EUGENE, LANE CO., OREGON

THE C.W. POWELL HOUSE
1125 WEST 5th AVENUE
FRONT (SOUTH) FACADE

30 OF 70 ; PR 20 ; I # 11



~~BLAIR~~ BLVD. COMMERCIAL AREA
EUGENE, CLATSOP CO., OREGON

1007 WEST 5TH AVENUE
SOUTHWEST CORNER

31 OF 70 ; PR 31 ; I# 12



BLAIR BLVD. COMMERCIAL AREA
EUGENE, LANE CO., OREGON

451, 461, 471 BLAIR BLVD.
FRONT (WEST) FACADES

32 OF 70: PK 32, I# 13



BLAIR BLVD. COMMERCIAL AREA
EUGENE, LANE CO., OREGON

451, 461, 471 BLAIR BLVD.
FROM S.W.

33 OF 70 ; PR 33 ; J# 13



BLAIR BLVD, COMMERCIAL AREA
EUGENE, LANE CO., OREGON

BURTON'S SAW FACTORY

449 BLAIR BLVD

SOUTH FACADE

34 OF 70 ; PR 34 ; I# 14



~~BLAIR~~ BLVD. COMMERCIAL AREA
EUGENE, LANE CO., OREGON

BURTON'S SAW FACTORY

449 BLAIR BLVD.

SW CORNER $\frac{1}{2}$ ALLEY

35 OF 70 ; PR 35 ; T # 14



BLAIR BLVD. COMMERCIAL AREA
EUGENE, LANE CO., OREGON

BURTON'S SAW FACTORY

449 BLAIR BLVD.

ENTRIES TO ORIGINAL FACTORY

SOUTH SIDE

36 OF 70; PR 36; I #14



BLAIR BLVD. COMMERCIAL AREA
EUGENE, LANE CO., OREGON

BURTON'S SAW FACTORY
449 BLAIR BLVD.
FROM N.W.

37 OF 70 ; PR 37 ; I # 14



BLAIR BLVD. COMMERCIAL AREA
EUGENE, LANE CO., OREGON

BURTON'S SAW FACTORY
449 BLAIR BLVD.

S.E. CORNER & ALLEY

38 OF 70 ; PR 38 ; I # 14



BLAIR BLVD. COMMERCIAL AREA
EUGENE, LANE CO., OREGON

BURTON'S SAW FACTORY
449 BLAIR BLVD.

EAST FACADE FROM S.W.

39 OF 70 ; PR 39 ; I#14



BLAIR BLVD. COMMERCIAL AREA
EUGENE, LAKE CO.; OREGON

BURTON'S SAW FACTORY

449 BLAIR BLVD,

REAR (NORTH) SHED EXTENSION

40 OF 70; PR 40; J # 14



BLAIR BLVD. COMMERCIAL AREA
EUGENE, LANE CO., OREGON

SAM BOND'S GARAGE
407 BLAIR BLVD

41 of 70 ; PR 41 ; I# 15



BLAIR BLVD. COMMERCIAL AREA
EUGENE, LANE CO., OREGON

SAM. BOND'S GARAGE
407 BLAIR BLVD

N.W. CORNER

42 OF 70; PR 42; J-15



BLAIR BLVD. COMMERCIAL AREA
EUGENE, LANE CO., OREGON

SAM BOND'S GARAGE
407 BLAIR BLVD.

FRONT (WEST) FACADE

43 OF 70 ; PR 43 ; I#15



BLAIR BLVD. COMMERCIAL AREA
EUGENE, LANE CO., OREGON

SAM BOND'S GARAGE

407 BLAIR BLVD.

SOUTH END

44 OF 70 ; PIC H4, I#18



4 BLAIR BLVD. COMMERCIAL AREA
EUGENE, LANE CO., OREGON

SAM BOND'S GARAGE

407 BLAIR BLVD.

INTERIOR, MOTOR PULLEY, $\frac{1}{2}$ TRACK

45 OF 70; PR 45; I# 15



BLAIR BLVD. COMMERCIAL AREA
EUGENE, LANE CO., OREGON

CASH O. (C.O.) SMITH HOUSE
1022 WEST 4th
- AVENUE

46 OF 70; PR 46; I#16



KLEIN BARN
NATURAL FOODS
GERMAN DELI

Family
BROCCOLI
FEED & SEED

TROY N FEEDS

ORGANIC
SATSBMAS
1 1/2 LB

WELCOME

MILITARY
CHICKEN
SOUP
ONLY 99

BLVD. COMMERCIAL AREA
EUGENE, LANE CO., OREGON

HAYSE BLACKSMITH SHOP/RED BARN
357 VAN BUREN ST.

FROM S.W.

47 OF 70; PR 47; I# 17



BEAVER BLVD, COMMERCIAL AREA
EUGENE, CLATSOP CO., OREGON

RED BARN

357 VAN BUREN ST.

FROM N.W.

49 OF 70; PR 49; I #17



STANLEY'S
NATURAL
FOODS

DAIRY

ONE WAY

100%
BROWN
EGGS & SEEDS

WALK
TO
WALK

WALK
TO
WALK

WALK
TO
WALK

WALK
TO
WALK

WALK
TO
WALK

BLAIR BLVD. COMMERCIAL AREA
EUGENE, LANE CO., OREGON

RED BARN,
357 VAN BUREN ST. I# 17

NEW DAY BAKERY
345 VAN BUREN ST. I# N3
BEN WHITE'S VULCANIZING I# 18
FROM S.W.

48 of 70; PR 48; I# 17 & I# N3, I# 18



BAKERY

341

BLAIR BLVD, COMMERCIAL AREA
EUGENE, LANG CO., OREGON

BEN WHITE'S VULCANIZING
341 VAN BUREN ST
FRONT (WEST) FACADE

50 OF 70; PR # 50; I # 18



~~BLAIR~~ BLVD. COMMERCIAL AREA
EUGENE, LANE, CO., OREGON

BEN WHITE'S VULCANIZING
341 VAN BUREN, I # 18

NEW DAY BAKERY
345 VAN BUREN, I # N3

RED BARN

357 VAN BUREN, I # 17
FROM N.W.

51 of 70 ; PR # 51 ; I # 18, N3, & 17



BLAIR BLVD. COMMERCIAL AREA
EUGENE, LANE CO., OREGON

BEN WHITE'S VULCANIZING
341 VAN BUREN

WINDOWS & SIDING
FRONT (WEST) FACADE

52 OF 70 ; PR 52 ; I # 18



BLAIR BLVD. COMMERCIAL AREA
EUGENE, LANE CO., OREGON

1080 W. 3rd AVENUE

"SHAMROCK LUNCH" EXTENSION & SIGN

W. SIDE FROM NORTH

53 OF 70; PR 53, I-4'19



BUTRIBLVD. COMMERCIAL AREA
EUGENE, LANE CO., OREGON

1000 W. 3RD AVE

FRONT (NORTH) ELEVATION

54 OF 70 ; PR 54, I # 19



BLAIR BLVD. COMMERCIAL AREA
EUGENE, LANE CO., OREGON

HENZLER HOUSE & SHOP
1110 W. 3rd AVENUE
FROM N.W.

55 OF 70; PR 55; J #20



BLAIR BLVD. COMMERCIAL AREA
EUGENE, LANE CO., OREGON

OLD TEXAS STEAK HOUSE
325 BLAIR BLVD.
& BLAIR ISLAND
FROM S.W.

36 OF 70 ; PR 56 ; I # 21



BLAIR BLVD, COMMERCIAL AREA
EUGENE, LANE CO., OREGON

OLD TEXAS STEAK HOUSE
325 BLAIR BLVD

FRONT (SOUTH) FACADE
BLAIR BLVD. & VAN BUREN ST

57 OF 70 ; PR 57 ; I # 21



BLAIR BLVD. COMMERCIAL AREA
EUGENE, LANE CO., OREGON

R. P. ALLEN HOUSE
312/324 BLAIR BLVD.

FRONT (EAST) FACADE

58 OF 70; PR 58; J-H 22



BLAIR BLVD. COMMERCIAL AREA
EUGENE, LANE COUNTY, OREGON

F. P. ALLEN HOUSE

312/324 BLAIR BLVD.

~~NORTHEAST~~ CORNER

59 OF 70; PR 59; I# 72



BLAIR BLVD, COMMERCIAL AREA

358 BLAIR BLVD.

FRONT (EAST) FACADE

60 OF 70 ; PIC 60 ; I#23



BLAIR BLVD. COMMERCIAL AREA
EUGENE, LANE CO., OREGON

TINY TAVERN
394 BLAIR BLVD.
FROM S.E.

62 OF 70, PR# 62; I#24



BLAIR BLVD. COMMERCIAL AREA
EUGENE, LANE CO., OREGON

TINY TAVERN

394 BLAIR BLVD.

FROM 4th AVENUE & BLAIR BLVD.

61 of 70 ; PR 61 ; I#24



BLAIR BLVD COMMERCIAL AREA
EUGENE, LANE CO., OREGON

TINY TAVERN
394 BLAIR BLVD.

FROM SOUTHEAST

63 of 70; PR 63; T # 24



BLAIR BLVD, COMMERCIAL AREA
EUGENE, LANE CO., OREGON

THE TINY TAVERN
394 BLAIR BLVD.

ENTRY FROM SOUTH

64 OF 70 ; PR 64 ; I #24



BLAIR BLVD. COMMERCIAL AREA
EUGENE, LANE CO., OREGON

THE TINY TAVERN
394 BLAIR BLVD
INTERIOTC, LOOKING SOUTH

65 of 70; PR 65, I# 24



BLAIR BLVD. COMMERCIAL AREA
EUGENE, LANE CO., OREGON

THE TINY TAVERN

394 BLAIR BLVD.

INTERIOR, LOOKING NORTH

66 OF 70; PR 66; I# 24

OLYMPIA
ON TAP



BLAIR BLVD. COMMERCIAL AREA
EUGENE, LANE CO., OREGON

THE TINY TAVERN

394 BLAIR BLVD

INTERIOR, N.W. CORNER

67 of 70; PR 67; JH 2V



BREADS PASTRIES CROISSANTS SOUPS PIZZA

FRESH BREAD

DARBY

BLAIR BLVD. COMMERCIAL AREA
EUGENE LANE CO., OREGON

NEW DAY BAKERY

345 VAN BUREN ST N6

FRONT (WEST) FACADE

312/324 BLAIR BLVD I #22

SURATA SOY FOODS

302 BLAIR BLVD I # N4

LOOKING NW FROM BLAIR ISLAND

68 OF 70; PR 68; I # N3, 22, N4



BLAIR BLVD. COMMERCIAL AREA
EUGENE, LANE CO., OREGON

JESCO CUPBAKER/
310 BLAIR BLVD I#N6

312/324 BLAIR BLVD I#22

SURATA SOY FOODS
302 BLAIR BLVD I#N4

LOOKING NW FROM BLAIR ISLAND

69 OF -10, PR 69, I#N6, 22, N4



BLAIR BLVD. COMMERCIAL AREA
EUGENE, LANE CO, OREGON

BROOKS ADDITION

NORTH SIDE

1100 BLOCK FIFTH AVENUE

70 OF 70; PR 70;