



WILKINS-ROBINS BUILDING

B-3598

Baltimore, Maryland

Mark R. Edwards <sup>and city</sup>

April, 1980

Negatives at Maryland Historical Trust

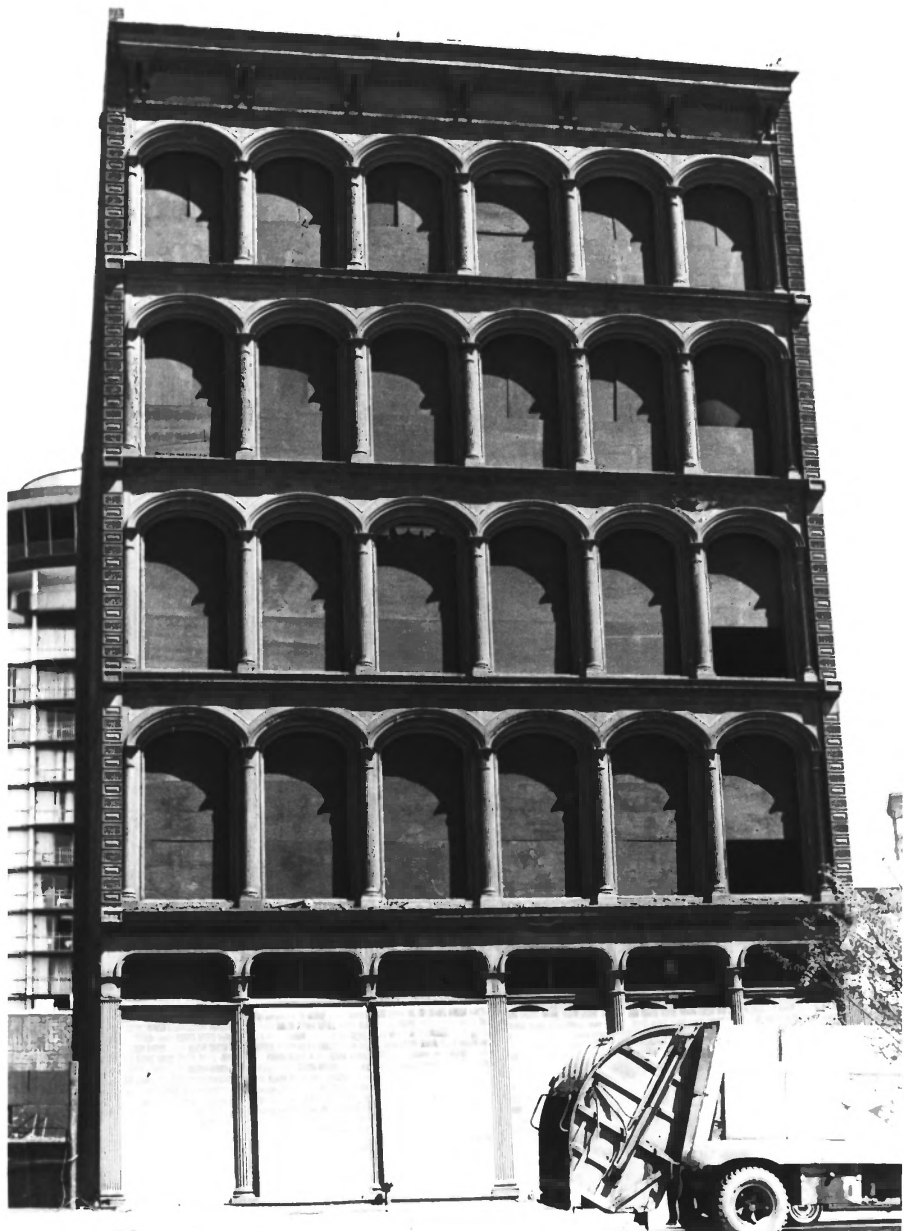
Southwest elevation of building

1 of 2

DEC 3 1980

NOV 3

1980



WILKINS-ROBINS BUILDING

B-3598

Baltimore, Maryland

*(end at)*  
Mark R. Edwards

April, 1980

Negatives at Maryland Historical Trust

South (Pratt Street) facade of building

2 of 2

DEC 3 1980

NOV 3 1980