

RECEIVED 413

FEB 27 1995

INTERAGENCY RESOURCES DIVISION
NATIONAL PARK SERVICE

United States Department of the Interior
National Park Service

National Register of Historic Places
Registration Form

This form is for use in nominating or requesting determinations for individual properties and districts. See instructions in How to Complete the National Register of Historic Places Registration Form (National Register Bulletin 16A). Complete each item by marking x in the appropriate box or by entering the information requested. If an item does not apply to the property being documented, enter "N/A" for "not applicable." For functions, architectural classification, materials, and areas of significance, enter only categories and subcategories from the instructions. Place additional entries and narrative items on continuation sheets (NPS Form 10-900a). Use a typewriter, word processor, or computer, to complete all items.

1. Name of Property

historic name FRANKLIN COUNTY COURTHOUSE

other names/site number N/A

2. Location

street & number Public Square N/A not for publication

city or town Winchester N/A vicinity

state Tennessee code TN county Franklin code 051 zip code 37398

3. State/Federal Agency Certification

As the designated authority under the National Historic Preservation Act, as amended, I hereby certify that this nomination request for determination of eligibility meets the documentation standards for registering properties in the National Register of Historic Places and meets the procedural and professional requirements set forth in 36 CFR Part 60. In my opinion, the property meets does not meet the National Register criteria. I recommend that this property be considered significant nationally statewide locally. (See continuation sheet for additional comments.)

Herbert L. Hays 2/18/95
Signature of certifying official/Title Date

Deputy State Historic Preservation Officer, Tennessee Historical Commission
State of Federal agency and bureau

In my opinion, the property meets does not meet the National Register criteria. (See continuation sheet for additional comments.)

Signature of certifying official/Title Date

State or Federal agency and bureau

4. National Park Service Certification

I hereby certify that the property is:

- entered in the National Register. See continuation sheet.
- determined eligible for the National Register See continuation sheet.
- determined not eligible for the National Register.
- removed from the National Register.
- other, (explain:)

for
Edson H. Beall Signature of the Keeper Date of Action
Entered in the National Register 3/30/95

Franklin County Courthouse
Name of Property

Franklin Co., TN
County and State

5. Classification

Ownership of Property
(Check as many boxes as apply)

- private
- public-local
- public-State
- public-Federal

Category of Property
(Check only one box)

- building(s)
- district
- site
- structure
- object

Number of Resources within Property
(Do not include previously listed resources in the count.)

Contributing	Noncontributing	
1	0	buildings
		sites
		structures
1	2	objects
2	2	Total

Name of related multiple property listing
(Enter "N/A" if property is not part of a multiple property listing.)

Historic County Courthouses in TN

Number of contributing resources previously listed
in the National Register

0

6. Function or Use

Historic Functions
(Enter categories from instructions)

GOVERNMENT: courthouse

Current Functions
(Enter categories from instructions)

GOVERNMENT: courthouse

7. Description

Architectural Classification
(Enter categories from instructions)

OTHER: PWA Modern

Materials
(Enter categories from instructions)

foundation CONCRETE

walls CONCRETE; METAL

roof ASPHALT

other METAL; GLASS

Narrative Description

Describe the historic and current condition of the property on one or more continuation sheets.)

See continuation sheets.

8. Statement of Significance

Applicable National Register Criteria

(Mark "x" in one or more boxes for the criteria qualifying the property for National Register listing.)

- A** Property is associated with events that have made a significant contribution to the broad patterns of our history.
- B** Property is associated with the lives of persons significant in our past.
- C** Property embodies the distinctive characteristics of a type, period, or method of construction or represents the work of a master, or possesses high artistic values, or represents a significant and distinguishable entity whose components lack individual distinction.
- D** Property has yielded, or is likely to yield, information important in prehistory or history.

Criteria Considerations

(Mark "x" in all the boxes that apply.)

Property is:

N/A

- A** owned by a religious institution or used for religious purposes.
- B** removed from its original location.
- C** a birthplace or grave.
- D** a cemetery.
- E** a reconstructed building, object, or structure.
- F** a commemorative property.
- G** less than 50 years of age or achieved significance within the past 50 years.

Areas of Significance

(Enter categories from instructions)

GOVERNMENT/ POLITICS

ARCHITECTURE

Period of Significance

1936-1945

Significant Dates

1936-37

Significant Person

(Complete if Criterion B is marked above)

N/A

Cultural Affiliation

N/A

Architect/Builder

Marr, Thomas and Holman, Joseph, arch.

Yearwood, Niles, contractor

Narrative Statement of Significance

(Explain the significance of the property on one or more continuation sheets.)

9. Major Bibliographical References

Bibliography

(Cite the books, articles, and other sources used in preparing this form on one or more continuation sheets.)

Previous documentation on file (NPS): N/A

- preliminary determination of individual listing (36 CFR 67) has been requested
- previously listed in the National Register
- previously determined eligible by the National Register
- designated a National Historic Landmark
- recorded by Historic American Buildings Survey # _____
- recorded by Historic American Engineering Record # _____

Primary location of additional data:

- State Historic Preservation Office
- Other State agency
- Federal agency
- Local government
- University
- Other

Name of repository:

MTSU Center for Historic Preservation

Franklin County Courthouse
Name of Property

Franklin Co., TN
County and State

10. Geographical Data

Acreage of Property less than one acre

UTM References

(Place additional UTM references on a continuation sheet.)

Winchester 87 NE

1	1 6	5 8 0 8 4 0	3 8 9 3 8 7 0
	Zone	Easting	Northing
2			

3			
	Zone	Easting	Northing
4			

See continuation sheet

Verbal Boundary Description

(Describe the boundaries of the property on a continuation sheet.)

Boundary Justification

(Explain why the boundaries were selected on a continuation sheet.)

11. Form Prepared By

name/title Holly Rine

organization MTSU Center for Historic Preservation date August 30, 1994

street & number PO Box 80, MTSU telephone 615-898-2947

city or town Murfreesboro state TN zip code 37132

Additional Documentation

Submit the following items with the completed form:

Continuation Sheets

Maps

A USGS map (7.5 or 15 minute series) indicating the property's location.

A Sketch map for historic districts and properties having large acreage or numerous resources.

Photographs

Representative black and white photographs of the property.

Additional items

(Check with the SHPO or FPO for any additional items)

Property Owner

(Complete this item at the request of SHPO or FPO.)

name George W. Fraley, Jr., county executive

street & number Franklin County Courthouse telephone 615-967-2905

city or town Winchester state TN zip code 37398

Paperwork Reduction Act Statement: This information is being collected for applications to the National Register of Historic Places to nominate properties for listing or determine eligibility for listing, to list properties, and to amend existing listings. Response to this request is required to obtain a benefit in accordance with the National Historic Preservation Act, as amended (16 U.S.C. 470 et seq.).

Estimated Burden Statement: Public reporting burden for this form is estimated to average 18.1 hours per response including time for reviewing instructions, gathering and maintaining data, and completing and reviewing the form. Direct comments regarding this burden estimate or any aspect of this form to the Chief, Administrative Services Division, National Park Service, P.O. Box 37127, Washington, DC 20013-7127; and the Office of Management and Budget, Paperwork Reduction Projects (1024-0018), Washington, DC 20503.

United States Department of the Interior
National Park Service

National Register of Historic Places Continuation Sheet

Section number 7 Page 1

RECEIVED

FEB 27 1995

INTERAGENCY RESOURCES DIVISION
NATIONAL PARK SERVICE

Franklin County Courthouse, Winchester, Franklin Co., TN

VII: DESCRIPTION

The Franklin County Courthouse, designed by architects Marr and Holman of Nashville and constructed in 1936-1937, is located on the public square in Winchester, Tennessee (pop. 6,305). The building is an example of the Classical Modern or PWA Modern style of architecture popular during the New Deal era of American history. The courthouse, which was constructed to be fireproof, is a three story rectangular building, which rests on a terrace about five feet off street level, and it is constructed mainly from reinforced concrete with a limestone veneer. The interior of the building, also designed to be fireproof, contains such building materials as metals, marble, plaster and terrazzo. The exterior of the building remains virtually unchanged with the exception of the addition of wheelchair access and a section which houses an elevator. The Franklin County Courthouse is also the only PWA Courthouse designed by Marr and Holman to include a clock tower.

The South College Street (north) facade is a symmetrical seven bay elevation with a projecting, stepped central bay. There are two flights of concrete stairs which lead to the central bay of the first floor of the building. The first flight leads to the terrace level, and the second flight goes up to the first floor of the courthouse and is flanked by concrete walls. Both sets of stairs have three iron handrails. The entrance is in the central bay and is recessed. The doorway consists of double doors with a transom and sidelights. The fully glazed doors were installed in 1981 and replaced the original glazed and panelled doors. Above the transom is a marquee which contains vertical decorative lines. Above this is a limestone spandrel with the words "Franklin County/ 1936" inscribed which flank a bronze "F" within a shield. Above this spandrel are the second and third story steel casement windows. These windows are separated by a cast-iron spandrel with the vertical decoration present on the marquee described above. On both sides of these windows are flanking windows, which are separated from the central windows by two narrow limestone pilasters, which run the height of both stories. On the central bay freize are

United States Department of the Interior
National Park Service

National Register of Historic Places Continuation Sheet

Section number 7 Page 2

Franklin County Courthouse, Winchester, Franklin Co., TN

inscribed the words, "COURT HOUSE JUSTICE FOR ALL." On both sides of the words is a cast iron floral medallion. The cornice of the central bay is in a floral pattern.

The central bay is surrounded by three bays on each side. The bays are separated from each other by a fluted pier, and the end corners of the building are smooth faced limestone veneer. Each bay contains the first, second and third story steel casement windows. Each story is separated by a cast iron spandrel. The spandrel separating the first and second floors is larger than that separating the second and third floors and contains a shield with an "F" in the center. The background of this spandrel is the vertical line pattern which was described earlier. This is also the pattern on the smaller spandrels which separate the second and third floors. The first floor windows are double vertical casement windows with horizontal window panes above and below. The second floor windows are double steel casement windows with a horizontal pane below. The third floor consists of three horizontal casement windows. Above the windows is an architrave decorated with alternating half circles and vertical lines. The frieze is unadorned and topped with a dentil cornice.

Basement windows are partially visible on this elevation. There are six windows which correspond to the six bays flanking the central bay. There are steel casement windows in the basement for natural lighting. Above the windows is a water table, which separates the basement from the first floor.

The South Jefferson Street (south) elevation is almost identical to the north facade. The interior stair case is located in the central bay of this facade and therefore required certain differences in fenestration. There is no marquee above the doorway on this elevation. The spandrel containing the inscription of "Franklin County/ 1938," and the shield and "F" is smaller than on the opposite elevation. There is a small cast iron spandrel separating the first and second floors with the vertical line design in the central bay. This spandrel is identical to the one which separates the second and third floors. The remainder of

United States Department of the Interior
National Park Service

National Register of Historic Places Continuation Sheet

Section number 7 Page 3

Franklin County Courthouse, Winchester, Franklin Co., TN

this elevation is identical to its counterpart on South College Street.

The First Avenue S.W. (east) elevation is similar to the two previously described. It is eleven bays across instead of seven bays on the previously discussed elevations. The central projecting section consists of three bays, the central one of which is now covered due to a 1992 addition of a glass elevator tower to provide wheelchair access to the courthouse. The glass tower was the county's attempt to comply with the requirements of the Americans with Disabilities Act. This elevation also contains the wheelchair ramps which lead down to the basement and directly to the elevator. The two flanking bays of windows are still visible and follow the same configuration of windows described above. The first floor windows are double, vertical steel casement windows with horizontal panes above and below. There are then cast-iron spandrels with the "F" inside a shield on a background of vertical lines. The second floor windows are double, vertical steel casement windows with a horizontal pane on the bottom. Above these windows are spandrels with the vertical line pattern. The third floor windows are triple, horizontal steel awning windows. The projecting central section has the words "COURT HOUSE FRANKLIN COUNTY" inscribed on the frieze and has a floral cornice. There is a space on the frieze for a bronze "F" and shield, but the space is now empty. The window configuration for the other bays is identical to that just described. In between each bay on the flanking sections is a fluted pier with the end corners of the building and the section between the fourth and fifth, and seventh and eighth bays, being smooth limestone. The flanking sections have the decorated architrave with the alternating half circle and vertical line pattern. The frieze is unadorned and there is a dentil cornice. The basement windows are double casement windows and are located below the flanking section bays. This elevation has no stairs leading to the top of the terrace. All access was originally from street level. This side was originally used as a loading ramp, coal chute, and entrance to African-American restrooms.

United States Department of the Interior
National Park ServiceNational Register of Historic Places
Continuation SheetSection number 7 Page 4

Franklin County Courthouse, Winchester, Franklin Co., TN

The First Avenue N.W. (west) elevation is the same as that of First Avenue S.W. with few exceptions. There are two sets of concrete stairs which reach to the terrace level and then to the first floor entrance. The entrance is in a three bay central section. It is a double glazed door entrance with glass transom and cast iron marquee with vertical line design. The remainder of the elevation is identical to that of the First Avenue S.W. elevation.

Topping the building is a clock tower of aluminum which was scored to resemble limestone. The clock tower is identical on all sides. It is smooth faced and has a stepped massing. The clock faces on all four sides are recessed and the numbers form a square. On top of the clock is a steel post which supports a rooster weather vane.

The first floor of the Franklin County Courthouse features a cruciform plan with vestibules at each entrance with two sets of double doors, one leading to the outside of the building, and one leading to the interior. These doors were removed on the southwest side where the elevator and wheelchair access are now located. Entering the courthouse on the southwest side, there are staircases on either side of the hall, which lead down to the basement. Located above these stairs, are another set of stairs to the second floor. The floors are made of a light-brown terrazzo arranged in a grid pattern and have a twelve inch border of brick red terrazzo. The ceilings consist of the original beige acoustic tiles framed by a border of flat, six inch wide wood molding. The walls have a wainscoting of ceramic tile.

On the walls of this hallway is a mural painted by graduated students of the Franklin County High School Art Department in 1989. The mural depicts events relevant to the county's history from pre-settlement times to 1865. Some of the events depicted include Native American occupation of the land, the first white settlers arrival, trade on the Elk River, the early court meetings in a log house, church activity in the county, and agriculture in the county. The historical information was researched by the Franklin County Historical Society and the Old Jail Museum Commission. The design and layout of the mural were completed by Kathy

United States Department of the Interior
National Park Service

National Register of Historic Places Continuation Sheet

Section number 7 Page 5

Franklin County Courthouse, Winchester, Franklin Co., TN

Martin and Casey Jones. This mural is on both sides of the hall and takes up the entire wall above the tile.

The central intersection of the first floor halls is octagonal, and the walls are of a marble surface. In addition to the four hallway openings, there are original doors which lead to county offices. Above each of these doors is a black shield with a bronze "F" in the middle. The archways to the halls are fluted, to once again give the building a vertical emphasis. There is also a decorative band of squares which encircles the cross-section. The ceiling, comprised of the original acoustic tiles, features elaborate molding. It is of three bands which overlap one another. The top band is at a forty-five degree angle to the wall and ceiling. The other two bands lay flat on the ceiling and together extend about a foot away from the surrounding walls. The floor in the central lobby is also of light-brown terrazzo with a dark brick red band of terrazzo framing it. In the center of the lobby is a multi-colored terrazzo and brass relief map of the county showing districts, communities, roads, railroads, and rivers.

The other three hallways of the first floor are very similar in appearance, with identical floors and ceilings. The walls are also made of ceramic tile wainscoting. However, these halls lack painted murals. The walls are plain concrete covered with plaster. All of the office doors on this floor are original. They are mostly panelled wood doors with a single glass pane on the top half with a glass transom overhead. Some of the original doors to rooms used for storage are solid wood or metal. The hall on the southeast side of the building has been extended to reach the elevator. The doors to the outside are on either side of this hallway. Offices on the first floor once had wooden partitions with metal grills separating public and private spaces. These partitions have been removed and in their place are open counters. A bathroom was also added to the Tax Assessor's office in the east corner of the building.

The second floor of the building, which houses the courtrooms, has a rectangular hallway off of which are the

United States Department of the Interior
National Park ServiceNational Register of Historic Places
Continuation SheetSection number 7 Page 6

Franklin County Courthouse, Winchester, Franklin Co., TN

rooms and offices for court officials. The floors, ceilings and walls on the second level are the same design and materials as those found on the first floor. On the second floor is the Court Clerk's office, the Circuit Court Room and the Chancery Court Room. The Court Clerk's office is in the south corner of the second floor. The Circuit Court Room, which has two sets of double doors leading into a vestibule and then into the courtroom, is on the northeast side of the building, and the Chancery Court Room is on the northwest side of the building. Court offices also are located around the two courtrooms.

The Chancery Court Room retains much of its historic appearance. The floors have been carpeted, but the walls and ceilings are original. The walls are the ceramic tile and plaster combination found throughout the building. The ceiling has the original acoustic tiles bordered by flat wood molding. On either side of the bench are bays which house court offices and provide access to other court offices. The spectator benches are the same as those in the Circuit Court Room.

The Circuit Court Room is much larger than the Chancery Court Room, and it also retains much of its historic integrity. New acoustic tiles have been installed in this room, but the ceiling has been only slightly dropped so it would not cover any of the windows. The floor in the spectator area is the original terrazzo tiles. The rest of the floor from the spectator area to the bench has been carpeted. The spectator benches are original and are of a very simple design. The bar and bench area retains its original appearance. The area behind the bench is wood panelling with a series of fluted columns for decoration. On either side of the bench is a bay area, similar to that in the Chancery Court Room, where offices are located. The doors and frames in these bays are original. The frames are fluted, and above each door is a black shield with a bronze "F" in the center.

The basement hallway resembles the rest of the hallways in the building. There are the two colors of terrazzo flooring; the walls are ceramic tile and plaster; and the

National Register of Historic Places Continuation Sheet

Section number 7 Page 7

Franklin County Courthouse, Winchester, Franklin Co., TN

ceiling consists of the original acoustic tiles surrounded by the wood molding described above. The office doors maintain their original appearance. Some of the offices themselves have been altered by dropped ceilings and new panelling. Interior entrances have also been added to restrooms which were once used as black restrooms and were only accessible by the outside.

The interior offices of the courthouse retain historical treatments in their floors (carpets have been added in the county executive offices), floor space configurations, and wall treatments. Dropped ceilings have been added in most chambers, in about 1980, to improve interior lighting but there are no new permanent partitions or have walls been removed, except in the basement where some spaces have been "finished" so they could be used as offices.

There are two monuments and one marker on the grounds of the courthouse. On the southern corner of the lot is a c. 1920 granite obelisk commemorating James Lewis, a Revolutionary War hero (C). This monument predates the construction of the PWA courthouse and was saved by local lawyer and Tennessee's first Lieutenant Governor Pete Haynes. Contractor Niles Yearwood then incorporated the monument into the courthouse's landscaping by raising it to the level of the terrace. The monument is a contributing element since it was part of the present courthouse's original landscaping. On the west corner of the lot is a c. 1970 unshaped stone monument with a plaque and a gas flame. This monument pays tribute to the county's war dead (NC, due to date). On the north corner of the property is a state historic marker commemorating the county's threat to secede from the Union and be annexed by Alabama if Tennessee did not secede (NC, due to date).

United States Department of the Interior
National Park Service

**National Register of Historic Places
Continuation Sheet**

Section number 8 Page 8

Franklin County Courthouse, Winchester, Franklin Co., TN

VIII: STATEMENT OF SIGNIFICANCE

The Franklin County Courthouse, Winchester, Tennessee, is eligible for the National Register of Historic Places under Criterion A for its association with the federal government's relief and recovery programs during the New Deal, especially the Public Works Administration, and under Criterion C as the town's outstanding example of PWA Modern architecture. It is nominated under the registration requirements for County Courthouses set forth in the Multiple Property Documentation form for Historic County Courthouses in Tennessee, 1865 to 1945.

Franklin County was established in 1807. In November of 1809, the Tennessee General Assembly empowered seven county commissioners to purchase land to establish a county seat. The group purchased a twenty-six acre site owned by Mr. Christopher Bullard for the price of one dollar. This was the beginning of the town of Winchester, which was laid out in a central courthouse square plan. The first courthouse was erected in 1814 with money raised in a lottery and was a small brick structure. In 1839, a second courthouse was built on the same site by Elish Merideth. This structure was added to in 1890.

By the 1930s the existing courthouse was in a state of deterioration. The county had also outgrown the facilities due to the expansion of governmental services during the Progressive era. Many county officials had office space in buildings around the town, which created extra expense for rental fees. There was also a concern over the possibility of losing records in an accidental fire which many town officials thought was imminent.

In 1935, Franklin County Officials began to apply for a Public Works Administration (PWA) grant to help with the construction of a modern, fire-proof courthouse. By January of 1936, the county had issued \$100,000.00 in bonds, and the PWA had approved a grant of \$42,000 for the construction of the present courthouse. An elected building committee consisting of J.B. Templeton, Judge T.L. Stewart, Frank Lynch, T.J. Sisk and G.M. Thorogood, Sr. hired the Nashville

National Register of Historic Places Continuation Sheet

Section number 8 Page 9

Franklin County Courthouse, Winchester, Franklin Co., TN

firm of Marr and Holman to design the new building. Marr and Holman were prominent Tennessee architects at this time and constructed four other PWA Modern courthouses in the state. The building contract went to Niles Yearwood of Nashville. The entire project cost about \$152,000.

Construction began in April of 1936, and the Quarterly Court met in the new courthouse on the first Monday in April, 1937. In the county court minutes for that meeting appears the following statement:

Through the graciousness and generosity of the splendid citizenship of our County, it has been made possible for us to convene the Court in this magnificent building--a monument within itself--erected by the people with pride and forethought who are ever looking forward toward progress and the betterment of Government. We are, and should be, justly proud of our endeavors and remember any little sacrifice made by any of us no more forever.

Our building is fire-proof throughout, our invaluable records secure and a large saving is effected by the elimination of insurance. Ample space is provided for all county officials and a further savings is made on rentals.¹

From 1935 to 1938, Franklin County received over \$300,000 from the PWA and Works Projects Administration. The county also raised about \$300,000 to contribute to projects such as building schools, highways and bridges. They also spent federal funds on conservation projects. From 1939 to 1945, the county no longer received PWA grants, but it did receive WPA grants totalling \$360,000. The majority of this money was also put towards the construction of schools, roads and bridges. Some of the funds went to sanitation system improvements and recreation facilities.

The New Deal programs had a profound effect on Franklin County. The presence of the federal government remains visible in the county courthouse, which stands in the same

United States Department of the Interior
National Park ServiceNational Register of Historic Places
Continuation SheetSection number 8 Page 10

Franklin County Courthouse, Winchester, Franklin Co., TN

central courthouse square that the 1814 courthouse was constructed on. The architectural style of the courthouse is representative of a new modernist architecture that became associated with New Deal programs like the Public Works Administration, the Tennessee Valley Authority, and Works Projects Administration. The style has come to be known as PWA Modern or Classical Modern. The Franklin County Courthouse is one of five Marr and Holman PWA courthouses in Tennessee and is similar to those other buildings. The outstanding difference in this Marr and Holman building is the clock tower which dominates the roof line of the courthouse. This is the only Marr and Holman PWA courthouse with such a feature.

The building is fire-proof and made mainly of steel and concrete and faced with stone to give it a very smooth appearance. The vertical emphasis, accentuated by the symmetrical classical pilasters, is one which is present in all PWA Modern courthouses in Tennessee. This vertical effect is created by the use of vertical bands of windows and fluted columns between the bands of windows. When combined with the low relief Art Deco details on the exterior and interior, the end result is a building that symbolically reflected the philosophy of the New Deal. The courthouse's architecture, like the New Deal itself, was modern (the Art Deco styling), yet connected to American virtues and culture (the classical ornamentation).

Interior details add to the symbolism of the courthouse. The relief map of the county in the center of the cruciform plan of the first floor is a common element to public buildings at this time by Marr and Holman. Materials such as marble and terrazzo are also common to the PWA courthouses of Tennessee. The Circuit Court room repeated the combination of Art Deco and classical elements found on the exterior. Even the fluted spectator benches brought the public into touch with the new design ethic represented by the New Deal reform programs.

All of these elements were considered very modern at the time of construction. Modernization and improvement of government was one of the main objectives of the Public

United States Department of the Interior
National Park Service

National Register of Historic Places Continuation Sheet

Section number 8 Page 11

Franklin County Courthouse, Winchester, Franklin Co., TN

Works Administration. One solution was to expand governmental services for the public. The new Franklin County Courthouse had offices for county level PWA and WPA officials as well as for the county extension agent. Today, the county agent remains in the courthouse, along with all other primary county officials, and the building still stands as a monument to the cooperation between government and the governed in Franklin County.

Endnotes:

¹Franklin County Court Minutes, Minute Book V, pg. 485.

United States Department of the Interior
National Park Service

National Register of Historic Places Continuation Sheet

Section number 9 Page 12

Franklin County Courthouse, Winchester, Franklin Co., TN

IX. BIBLIOGRAPHY

Center for Historic Preservation. "Winchester, Tennessee Historic District, Zoning Recommendations and Guidelines." Middle Tennessee State University, 1981.

Crane, Paul and Sophie. Tennessee Taproots. Old Hickory, Tennessee: Earle-Shields, 1976.

Flint, Joel. Draft National Register Nomination: Franklin County Courthouse. MTSU Center for Historic Preservation, 1987.

Franklin County Court Minute Book V., Winchester, TN.

Hannah, Howard, Franklin County Historian. Interview by author, 10 August 1994, telephone.

Tennessee State Planning Commission. Programming Public Works. Nashville: Tennessee State Planning Commission, 1940.

West, Carroll Van. Tennessee Historical Landscapes: A Bicentennial Guide. Knoxville: University of Tennessee Press, 1995.

United States Department of the Interior
National Park Service

National Register of Historic Places Continuation Sheet

Section number 10 Page 13

Franklin County Courthouse, Winchester, Franklin Co., TN

X. GEOGRAPHICAL DATA

Verbal Boundary Description

The property is located on the public square in downtown Winchester, Tennessee. The grounds are bordered by First Avenue NW, First Avenue SW, S. College Street, and S. Jefferson Street. The lot measures 140 feet by 150 feet and is represented on the attached Franklin County Tax Map 65-N (inserts one and two), block P, parcel 1.

Boundary Justification

This boundary includes all the land currently and historically associated with the Franklin County Courthouse.

United States Department of the Interior
National Park Service

National Register of Historic Places
Continuation Sheet

Section number PHOTOS Page 14

Franklin County Courthouse, Winchester, Franklin Co., TN

PHOTOGRAPHS

Franklin County Courthouse, Winchester, TN

Photos by: Carroll Van West
MTSU Center for Historic Preservation

Date: March 1994

Negatives: Tennessee Historical Commission
Nashville, TN

North facade, facing south
1 of 24

North facade and west elevation, facing southeast
2 of 24

South elevation, facing north
3 of 24

South elevation and east elevation, facing northwest
4 of 24

East elevation, facing west
5 of 24

West elevation, facing northeast
6 of 24

County map, first floor lobby, facing north
7 of 24

First floor central lobby, facing east
8 of 24

"F" medallion, first floor central lobby, facing north
9 of 24

Homecoming '86 county quilt, first floor hallway, facing
northeast
10 of 24

1989 history mural, first floor hallway, facing southwest
11 of 24

National Register of Historic Places Continuation Sheet

Section number PHOTOS Page 15

Franklin County Courthouse, Winchester, Franklin Co., TN

1989 history mural, first floor hallway, facing northeast
12 of 24

1989 history mural, first floor hallway, facing southeast
13 of 24

First floor staircase to second floor, facing south
14 of 24

Second floor lobby/hallway, facing north
15 of 24

Circuit court clerk office, second floor, facing east
16 of 24

Chancery court room, second floor, facing north
17 of 24

Circuit court room, second floor, facing east
18 of 24

Circuit court room, second floor, facing north
19 of 24

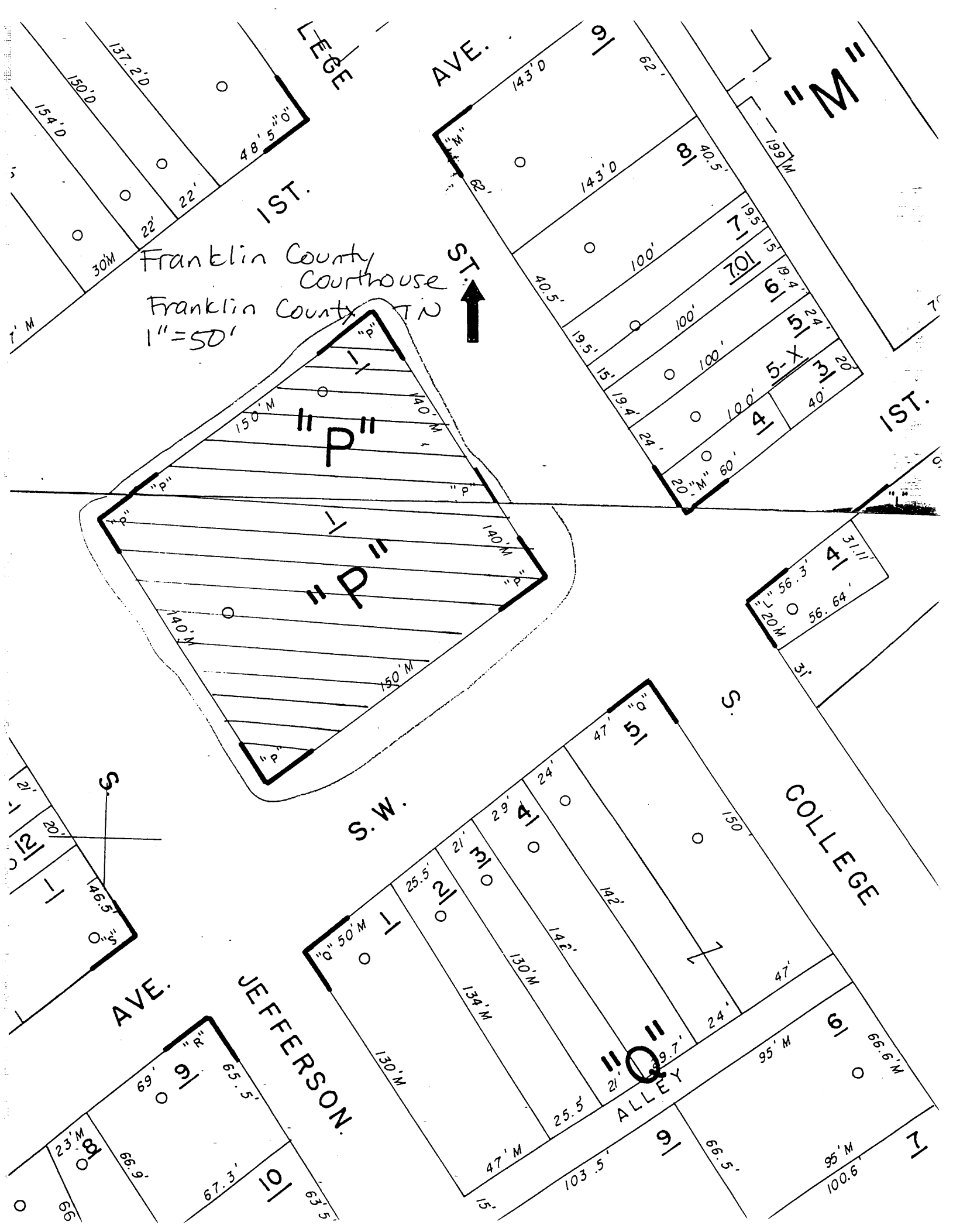
Judges bench, circuit court room, second floor, facing east
20 of 24

"F" medallion and door detail, circuit court room, second
floor, facing east
21 of 24

New hallway to elevator, basement, facing east
22 of 24

Staircase, basement, facing south
23 of 24

Entrance to elevator, first floor, facing east
24 of 24



Franklin County
Courthouse
Franklin County TN
1"=50'

