



Sandstone Public School Building

Sandstone, MN; Pine County

Charles Nelson

1978

JAN 30 1979

#1086

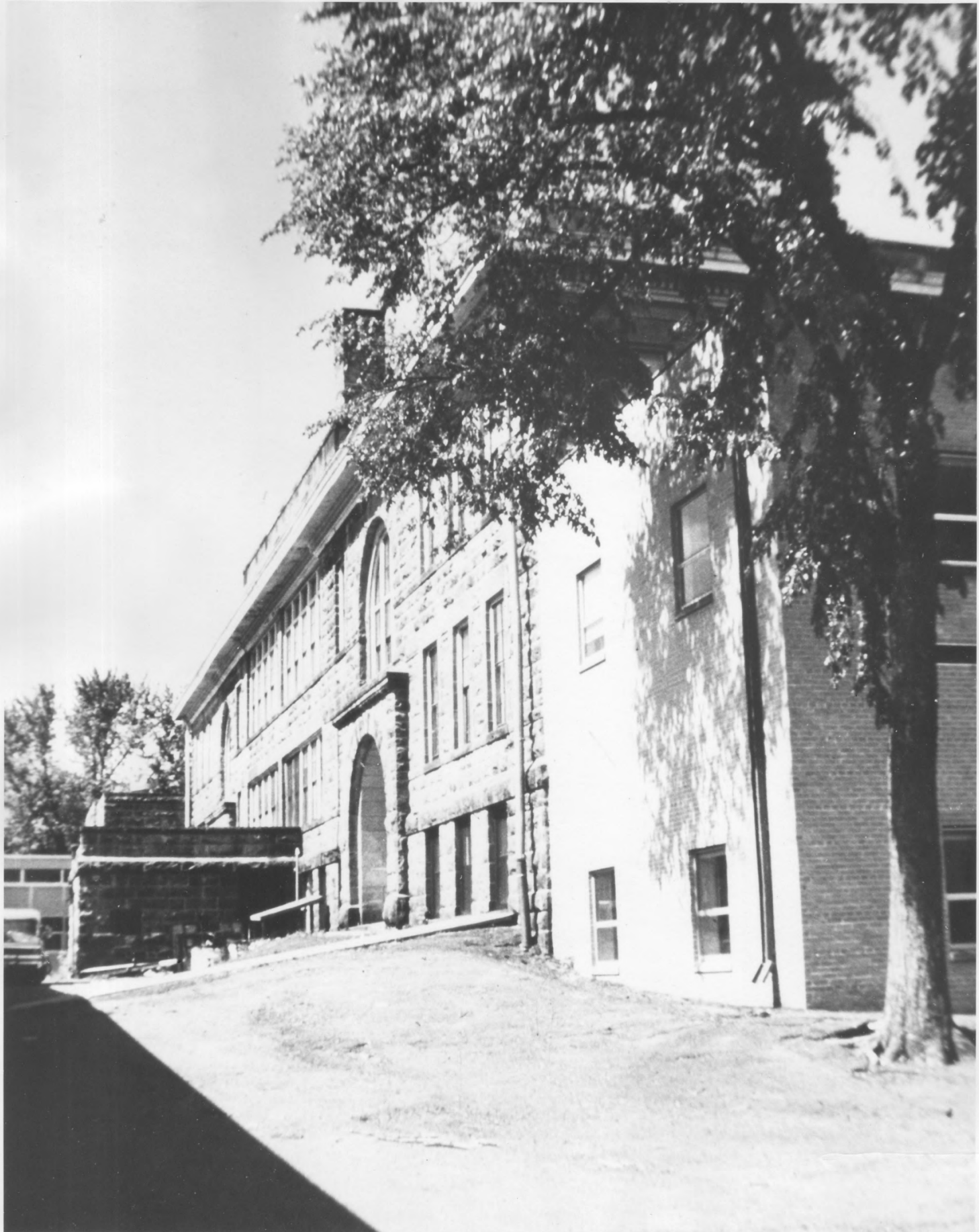
Minnesota Historical Society, 690

Cedar Street, St. Paul, MN 55101

North (front) facade/ca.1940 addition

to left of photo FEB 7 1979





Sandstone Public School Building  
Sandstone, MN; Pine County

Charles W. Nelson JAN 30 1979

1978 #2076 FEB 7 1979

Minnesota Historical Society, 690

Cedar Street, St. Paul, MN 55101

Perspective view of south (rear)  
facade showing ca.1940 addition  
in right foreground and one-story  
glass and metal concourse to 1960  
building (lower left of photo)





Sandstone Public School Building  
Sandstone, MN; Pine County #3076

Charles W. Nelson

1978

FEB 7

1979

JAN 30 1979

Minnesota Historical Society, 690  
Cedar Street, St. Paul, MN 55101

Rear (South) facade of WPA  
auditorium addition at west end  
of main building





Sandstone Public School Building

Sandstone, MN; Pine County

Charles W. Nelson

#4076

1978 FEB 7 1979

JAN 30 1979

Minnesota Historical Society, 690

Cedar Street, St. Paul, MN 55101

Perspective of North (front) facade

showing ca.1940 addition at left,

WPA addition at far right.





Sandstone Public School Building  
Sandstone, MN; Pine County  
Pine County Historical Society  
1977

Minnesota Historical Society, 690

Cedar Street, St. Paul, 55101

North (front) facade

02587/15

NOV 20 1978

FEB 7 1970 #5066

02587  
15

NOTICE: This material may be protected  
by copyright law (Title 17 U. S. Code).

FROM THE COLLECTIONS OF THE  
MINNESOTA HISTORICAL SOCIETY  
THIS PHOTOGRAPH IS FOR REFERENCE USE  
ONLY. IT MAY NOT BE REPRODUCED OR  
SOLD WITHOUT WRITTEN PERMISSION.





Sandstone Public School Building

Sandstone, MN; Pine County

Charles W. Nelson

1978 FEB 7 1979 JAN 30 1979

Minnesota Historical Society, 690

Cedar Street, St. Paul, MN 55101

Detail of west entry, north (front)  
facade