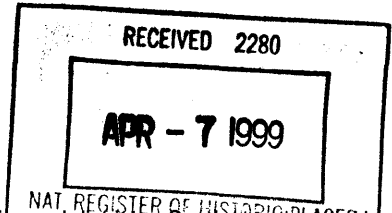


525



United States Department of the Interior
National Park Service

NATIONAL REGISTER OF HISTORIC PLACES
REGISTRATION FORM

This form is for use in nominating or requesting determinations for individual properties and districts. See instructions on how to complete the National Register of Historic Places Registration Form (National Register Bulletin 16A). Complete each item by making "X" in the appropriate box or by entering the information requested. If any item does not apply to the property being documented, enter "N/A" for "not applicable." For functions, architectural classification, materials, and areas of significance, enter only categories and subcategories from the instructions. Place additional entries and narrative items on continuation sheets (NPS Form 10-900a). Use a typewriter, word processor, or computer, to complete all items.

1. Name of Property

historic name DEERFIELD SCHOOL

other names/site number Old Deerfield School

2. Location

street & number 323 North East Second Street N/A not for publication

city or town Deerfield Beach N/A vicinity

state FLORIDA code FL county Broward code 011 zip code 33441

3. State/Federal Agency Certification

As the designated authority under the National Historic Preservation Act, as amended, I hereby certify that this nomination request for determination of eligibility meets the documentation standards for registering properties in the National Register of Historic Places and meets the procedural and professional requirements set forth in 36 CFR Part 60. In my opinion, the property meets does not meet the National Register criteria. I recommend that this property be considered significant nationally statewide locally. (See continuation sheet for additional comments.)

[Signature] 3/29/99
Signature of certifying official/Title Date

Florida State Historic Preservation Officer, Division of Historical Resources
State or Federal agency and bureau

In my opinion, the property meets does not meet the National Register criteria. (See continuation sheet for additional comments.)

Signature of certifying official/Title Date

State or Federal agency and bureau

4. National Park Service Certification

- I hereby certify that the property is:
- entered in the National Register See continuation sheet
 - determined eligible for the National Register See continuation sheet.
 - determined not eligible for the National Register See continuation sheet.
 - removed from the National Register.
 - other, (explain) _____

[Signature] 5/5/99
Signature of the Keeper Date of Action

5. Classification

Ownership of Property

(Check as many boxes as apply)

- private
- public-local
- public-State
- public-Federal

Category of Property

(Check only one box)

- buildings
- district
- site
- structure
- object

Number of Resources within Property

(Do not include any previously listed resources in the count)

Contributing	Noncontributing	
1	0	buildings
0	0	sites
0	0	structures
0	0	objects
1	0	total

Name of related multiple property listings

(Enter "N/A" if property is not part of a multiple property listing.)

Number of contributing resources previously listed in the National Register

"N/A"

0

6. Function or Use

Historic Functions

(Enter categories from instructions)

EDUCATION: school

Current Functions

(Enter categories from instructions)

SOCIAL: meeting hall
RECREATION/CULTURE : musuem

7. Description

Architectural Classification

(Enter categories from instructions)

LATE NINETEENTH & TWENTIETH CENTURY
REVIVALS: Mediterranean Revival

Materials

(Enter categories from instructions)

foundation STUCCO
walls STUCCO
roof ASPHALT
other

Narrative Description

(Describe the historic and current condition of the property on one or more continuation sheets.)

8. Statement of Significance

Applicable National Register Criteria

(Mark "x" in one or more boxes for the criteria qualifying the property for National Register listing.)

- A** Property is associated with events that have made a significant contribution to the broad patterns of our history.
- B** Property is associated with the lives of persons significant in our past.
- C** Property embodies the distinctive characteristics of a type, period, or method of construction or represents the work of a master, or possesses high artistic values, or represents a significant and distinguishable entity whose components lack individual distinction.
- D** Property has yielded, or is likely to yield information important in prehistory or history.

Criteria Considerations

(Mark "x" in all the boxes that apply.)

Property is:

- A** owned by a religious institution or used for religious purposes.
- B** removed from its original location.
- C** a birthplace or grave.
- D** a cemetery.
- E** a reconstructed building, object, or structure.
- F** a commemorative property.
- G** less than 50 years of age or achieved significance within the past 50 years

Narrative Statement of Significance

(Explain the significance of the property on one or more continuation sheets.)

9. Major Bibliographical References

Bibliography

Cite the books, articles, and other sources used in preparing this form on one or more continuation sheets.)

Previous documentation on file (NPS):

- preliminary determination of individual listing (36 CFR 36) has been requested
- previously listed in the National Register
- previously determined eligible by the National Register
- designated a National Historic Landmark
- recorded by Historic American Buildings Survey # _____
- recorded by Historic American Engineering Record

Areas of Significance

(Enter categories from instructions)

EDUCATION

ARCHITECTURE

Period of Significance

1920-1926

Significant Dates

1920

Significant Person

N/A

Cultural Affiliation

N/A

Architect/Builder

Lewis, A.E.

Tubbs, Edgar S.

Primary location of additional data:

- State Historic Preservation Office
- Other State Agency
- Federal agency
- Local government
- University
- Other

Name of Repository

Deerfield School
Name of Property

Broward Co., FL
County and State

10. Geographical Data

Acreage of Property less than one

UTM References

(Place additional references on a continuation sheet.)

1	1 7	5 8 9 8 6 0	2 9 1 1 2 8 0
	Zone	Easting	Northing
2			

3			
	Zone	Easting	Northing
4			

See continuation sheet

Verbal Boundary Description

(Describe the boundaries of the property on a continuation sheet.)

Boundary Justification

(Explain why the boundaries were selected on a continuation sheet.)

11: Form Prepared By

name/title Margaret S. Briggs/Robert O. Jones, Historic Sites Specialist

organization Bureau of Historic Preservation date March 1999

street & number R.A. Gray Building, 500 S. Bronough Street telephone (850) 487-2333

city or town Tallahassee state Florida zip code 32399-0250

Additional Documentation

Submit the following items with the completed form:

Continuation Sheets

Maps

A USGS map (7.5 or 15 minute series) indicating the property's location.

A Sketch map for historic districts and properties having large acreage or numerous resources.

Photographs

Representative black and white photographs of the property.

Additional items

(check with the SHPO or FPO for any additional items)

Property Owner

(Complete this item at the request of SHPO or FPO.)

name City of Deerfield Beach

street & number 150 N.E. 2nd Street telephone 954-4804200

city or town Deerfield Beach state FL zip code 33441

Paperwork Reduction Act Statement: This information is being collected for applications to the National Register of Historic Places to nominate properties for listing or determine eligibility for listing, to list properties, and amend listings. Response to this request is required to obtain a benefit in accordance with the National Historic Preservation Act, as amended (16 U.S.C. 470 et seq.).

Estimated Burden Statement: Public reporting burden for this form is estimated to average 18.1 hours per response including time for reviewing instructions, gathering and maintaining data, and completing and reviewing the form. Direct comments regarding this burden estimate or any aspect of this form to the Chief, Administrative Services Division, National Park Service, P.O. Box 37127, Washington, DC 20013-7127; and the Office of Management and Budget, Paperwork Reductions Projects (1024-0018), Washington, DC 20503.

**United States Department of the Interior
National Park Service**

**NATIONAL REGISTER OF HISTORIC PLACES
CONTINUATION SHEET**

Section number 7 Page 1 **DEERFIELD SCHOOL, DEERFIELD BEACH,
BROWARD COUNTY, FLORIDA**

SUMMARY

The Deerfield School is located at 232 North East Second Street, in Deerfield Beach, Broward County, Florida. The 1920, one-story Mission Style building has a "T" shaped footprint, on a slab foundation. It has a stucco exterior and a hip roof. An extension on the south elevation accommodates bathrooms. The main (north) facade has a projecting portico with a sculpted parapet. Windows are filled with 12/2, double-hung wooden sashes, and 9-light fixed windows.

SETTING

The Deerfield School occupies less than one acre of property, and shares the block with the City Hall building and parking lot, located west and south of the school (Photo #1). When constructed in 1920, the school was in the center of the city's development. Seven hundred thirty-five (735) feet north of the school is the Hillsborough Canal, which divides Broward County from Palm Beach County. The canal is bordered by a public park and recreation area. The block to the east has the sheriff's office, and to the west is the north/south railroad tracks, and Old Dixie Highway. North of the school is a grass lawn landscaped with shrubs, and palm and oak trees (Photo #2).

PHYSICAL DESCRIPTION

Exterior

The one-story building has a stucco exterior and hip roof. Windows on the north and east elevations have 12/2, double-hung wooden sashes, and the south elevation has 12-light single-hung sashes. The north and south elevations have sashes in groups of four. The one foot high stucco foundation projects approximately 2 inches, and window sills extend approximately 2 inches. Eaves contain exposed sculpted rafters.

The main (north) facade has a centrally located extended portico with a semi-circular arch above three concrete steps accessing the porch and two single doors with six lights and transom (Photo #3). A bronze historic plaque is on a wall between the doors (Photo #4). The portico has a sculpted parapet containing the inscription 'Deerfield Beach Old School

United States Department of the Interior
National Park Service

**NATIONAL REGISTER OF HISTORIC PLACES
CONTINUATION SHEET**

Section number 7 Page 2 **DEERFIELD SCHOOL, DEERFIELD BEACH,
BROWARD COUNTY, FLORIDA**

House 1920." A short flag pole is centered on the parapet. A bell on a pole is beside the steps to the west. Groupings of four 12/2 windows occupy most of the walls on either side of the entrance. The hip roof is surfaced with asphalt shingles.

The east elevation has one solid door in the northern half of the wall, and a pair of 12/2 sash windows are in the southern half (Photo #5). The door formed the connection with a now demolished jail building.

The south elevation has a centrally located lower hip extension which is detached from the main block but covered by the roof (Photo #6). There are jalousie windows on the extension's three exterior sides. Groupings of four 12-light windows occupy most of the walls on either side of the extension (Photo #7). A concrete ramp rises along the eastern half. Two doors access two rooms within the extension (Photo #8).

The west elevation is a narrow end of the rectangular footprint, and mirrors the west elevation except that it has no windows or doors.

Interior

The interior of the school has two class rooms, and two bathrooms in the south extension. The two classrooms were originally partitioned with a folding screen which was replaced in the historic period with a wall. Wooden floors, plaster walls and ceilings are retained. The west room has a blackboard across the south wall (Photos #9 &10). Picture molding circles the room. A platform riser at the east end of the east room has been removed. The rooms is lit by three exposed light bulbs as it was while the building was a school. The east room has been carpeted, and ceilings covered with acoustic tiles and florescent lights (Photos #11 & 12). The variation in the wall around the door in the east wall reveals the old connection to the now demolished jail extension. Doors with six lights, and two panels provide access to the four foot wide breezeway connecting the classrooms with the boys and girls bathrooms in the south extension.

ALTERATIONS

During the historic period, when the city was using the building, the floor riser in the east room was removed. A wall partition replaced the folding screen classrooms divider. Windows were removed from the west

**United States Department of the Interior
National Park Service**

**NATIONAL REGISTER OF HISTORIC PLACES
CONTINUATION SHEET**

Section number 7 Page 3

**DEERFIELD SCHOOL, DEERFIELD BEACH,
BROWARD COUNTY, FLORIDA**

wall. When the jail was built to the east of the school, and connected at the northeast corner, a window was removed and a door was installed.

During the non-historic period the jail was demolished. Acoustic ceiling tiles and florescent lights were installed in the east room, and the east room was restored as a classroom. The restoration included the installation of three exposed, extended light bulbs, and placement of blackboards where they had originally been along the south walls.

**United States Department of the Interior
National Park Service**

**NATIONAL REGISTER OF HISTORIC PLACES
CONTINUATION SHEET**

Section number 8 Page 1 **DEERFIELD SCHOOL, DEERFIELD BEACH,
BROWARD COUNTY, FLORIDA**

SUMMARY

The Deerfield School is nominated to the National Register on the local level under Criteria A and C in the areas of Education and Architecture. The school was built for white students to meet the needs of a growing community. The hollow tile and concrete building was the first masonry building in the town, and was built in the Mission Revival Style. Within only six years the continued growth of the town necessitated the construction of a larger school which remains in operation. After it was vacated by the school, the building was occupied by the city government.

HISTORIC CONTEXT

The area had no significant settlement from Florida's Territorial and early statehood periods until the 1890s, when a small farming settlement known as "Deerfield" began. Growth in south Florida led to the creation of new counties. Originally part of Dade County, in 1909, Deerfield became part of Palm Beach County, and in 1915, part of the newly created Broward County. The economy of the farming settlement was assisted in 1896 when Henry Flagler's East Coast Railroad was laid through Deerfield and a depot assisted the shipment of produce. The community grew steadily so that by 1920 the population was about 1000. The name of the town was changed to "Deerfield Beach" in 1939.

Deerfield Beach and Broward County schools are, therefore, an outgrowth of the Dade County public education system which was begun in the 1890s. By 1901, Dade County had built twenty white schools and six African-American schools which served 997 pupils. In 1903 a school for African-American students was built in Deerfield, and in 1907 a one room wooden school for white students was built. The 1907 school still exists. When Deerfield became a part of Broward County in 1915, there were 105 students; 50 white and 55 Black. The town continued to grow, and eventually the schools could not accommodate the population.

Mediterranean Revival is an eclectic style containing elements from Spanish or Mid-eastern traditions. The style is found in the states that have a Colonial Spanish history, and was popular in Florida from the late 1910s into the 1930s. A Florida building "boom" in the 1920s proved the popularity of the style, which was applied to buildings of all functions, from cottages to grand hotels. The Mediterranean Revival Style is

**United States Department of the Interior
National Park Service**

**NATIONAL REGISTER OF HISTORIC PLACES
CONTINUATION SHEET**

Section number 8 Page 2 **DEERFIELD SCHOOL, DEERFIELD BEACH,
BROWARD COUNTY, FLORIDA**

characterized by shaped roof parapets, red tile roofs, and an asymmetrical facade attached to a simple rectangular plan. Opening are often arched; support columns are enlarged and square; walls are usually stucco. Ornamentation is commonly used to accent doors and window and is usually accomplished with decorated tile, terra cotta, carved stone or wrought iron. The Mission Style, a variation of Mediterranean Revival, is usually relatively plain, but distinguished by shaped parapets.

HISTORIC & ARCHITECTURAL SIGNIFICANCE

On September 8, 1920, the Broward County Board of Public Instruction began construction of a two classroom masonry school. A.E. Lewis was the architect, and Edgar S. Tubbs was the builder. The Board of Public Instruction approved the building and grounds on March 6, 1921. The project was funded by a \$12,000 public bond issue. Built as a modest variation of the Mediterranean Revival Style, the school complimented the popular use of the style in Florida during the late teens into the Depression of the 1930s. The school's sculpted parapet over the portico, ornamental tiles, stucco exterior, and hip roof with exposed rafter ends gave the simple utilitarian building a Mediterranean Revival character.

A school day was from 8:00 am until 3:00 pm, and was called to order by the hand tolled bell outside the front door. The lower grades met in one room, and the upper grades, through 8th grade, in the other. The day was begun with morning exercises, at which time the folding screen was opened and all students had devotions, pledged allegiance to the flag, and sang songs such as "America." Teaching was largely done along the "open education" method. The teacher would call the grade level and subject, and those students would go to the teacher's desk for instruction, and then return to their desks to work. The children had recess, and those that maintained good grades and behavior could go home for lunch. Most children's homes were very close by, but one boy, Jay Arnau, drove his father's Chevrolet over the wooden bridge to his home at the beach. There were no age restrictions or driver's licenses in 1924. Upon graduation at 8th grade, each student wrote and delivered a speech. Students in grades 9 through high school were bused to Ft. Lauderdale. As the school became more crowded in 1925, the first grade was conducted in a Baptist church. The population increased again, necessitating the construction of larger

**United States Department of the Interior
National Park Service**

**NATIONAL REGISTER OF HISTORIC PLACES
CONTINUATION SHEET**

Section number 8 Page 3 **DEERFIELD SCHOOL, DEERFIELD BEACH,
BROWARD COUNTY, FLORIDA**

educational facilities. In 1926 a new, larger school was contracted, and completed in February of 1927.

The city was without public buildings to accommodate the local government, and city council meetings were held in borrowed commercial offices. The city took over the newly vacated school building and used it for city meetings through the historic period. The building was also used for community square dances on the weekends. A jail, now demolished, was built immediately east of the school, and connected at the northeast corner. Since the construction of a City Hall in 1986, the school building has been used as a museum of local education, and a community meeting hall.

**United States Department of the Interior
National Park Service**

**NATIONAL REGISTER OF HISTORIC PLACES
CONTINUATION SHEET**

Section number 9 Page 1 **DEERFIELD SCHOOL, DEERFIELD BEACH,
BROWARD COUNTY, FLORIDA**

BIBLIOGRAPHY

- Broward County Public Records Recording Division, Warranty Deed, Deed Book 196, 7 January 1929, p.135.
- Broward County School Board Minutes, Ft. Lauderdale, FL, Vol.1, p.152, 13 July 1918; p.216, 1 June 1920; p.228, 3 September 1920; p.290,292,293, 11 January 1921; Vol. 2, pp.304,305, 16 March 1921.
- Butler, Jack, interview by Margaret S. Briggs, 18 March 1998.
- Cohen, Craig, interview by Margaret S. Briggs, February 1998.
- Dooley, Bruce, interview by Margaret S. Briggs, 18 March 1998.
- Galecki, Marta, "The Old School House," June 1974. Florida State Archives, Tallahassee, Florida, Photographic Collection.
- Historic Broward County, "Comprehensive Documented History of Deerfield Beach," 1985, revised 1988.
- Kirk, Cooper, interview by Margaret S. Briggs, 28 April 1988.
- Levy, Pam, interview by Margaret S. Briggs, 18 March 1998.
- Morris, Philip, "Building the Florida Dream," Southern Living, January 1986, pp. 98-103.
- Roberts, Elizabeth, "Mizner," Ft. Lauderdale Sun Sentinel, 15 April 1988.
- Wanzenberg, Johanna Dietrich, "The History of the Old School House, Deerfield Beach, Florida," (unpublished) Deerfield Beach Historical Society, 1977.

**United States Department of the Interior
National Park Service**

**NATIONAL REGISTER OF HISTORIC PLACES
CONTINUATION SHEET**

Section number 10 Page 1 **DEERFIELD SCHOOL, DEERFIELD BEACH,
BROWARD COUNTY, FLORIDA**

VERBAL BOUNDARY DESCRIPTION

The boundary for the Deerfield School is a portion of the Deerfield Development and Land Company, lot 6 thru 14 and W 7 ½ of VAC alley adjoining and W 10 of NE 4 Ave abutting lots 15 thru 17 and W 7 ½ of VAC alley adjoining Blk 6, lot 18 and 7 ½ & W 7 ½ of VAC alley lot 19 and E 7 ½ and S 7 ½ of VAC alley, lots 20 thru 23 & S 7 ½ of VAC alley and N ½ of VAC NE 1st St. Abutting said parcel Blk 6. See scaled map.

BOUNDARY JUSTIFICATION

Most of the surrounding property has been occupied by the non-historic building and parking so as to diminish its historic character. The portion of the property not occupied by non-historic construction to the north and east, and that which maintains character and setting has been included in the nomination.

**United States Department of the Interior
National Park Service**

**NATIONAL REGISTER OF HISTORIC PLACES
CONTINUATION SHEET**

Section number Photos Page 1 **DEERFIELD SCHOOL, DEERFIELD BEACH,
BROWARD COUNTY, FLORIDA**

PHOTOGRAPHIC LIST

Deerfield School, 232 NE 2nd St., Deerfield Beach
Broward County, Florida
Margaret S. Briggs
September 1997
Briggs, 541 SE 18th Ave., Deerfield Beach, FL 33441
North lawn with school facade and new City Hall, looking southeast
Photo #1 of 12

Items 1-5 are the same for the remaining photographs.

Main, north facade with several trees, looking southwest
Photo #2 of 12

Main, north facade, looking south
Photo #3 of 12

Historic plaque on north facade, looking south
Photo #4 of 12

East elevation, looking west
Photo #5 of 12

South elevation, looking northwest
Photo #6 of 12

South elevation, looking northeast
Photo #7 of 12

South extension doors, looking southeast
Photo #8 of 12

East classroom, looking northwest
Photo #9 of 12

East classroom, looking southwest
Photo #10 of 12

**United States Department of the Interior
National Park Service**

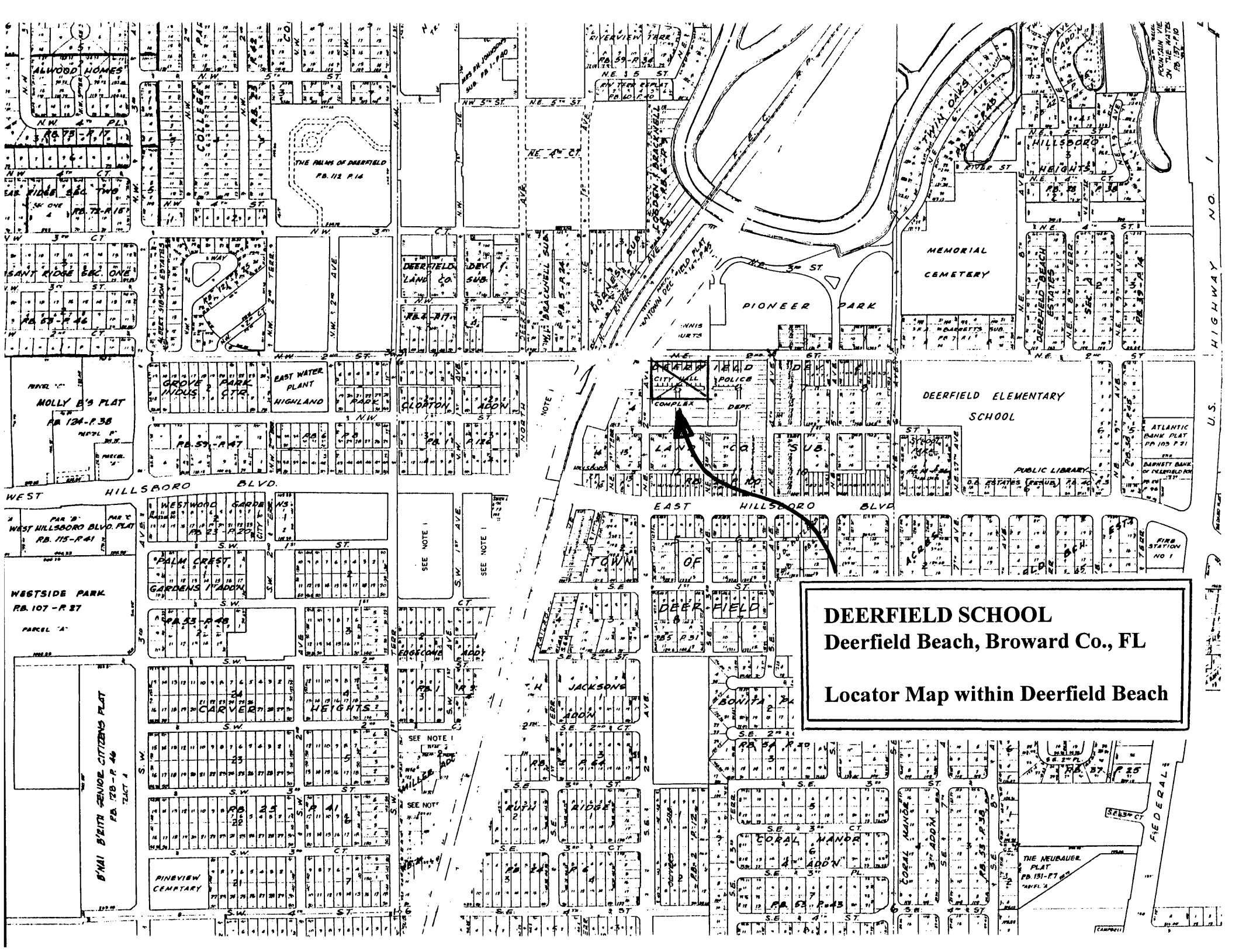
**NATIONAL REGISTER OF HISTORIC PLACES
CONTINUATION SHEET**

Section number _____ Photos _____ Page 2

**DEERFIELD SCHOOL, DEERFIELD BEACH,
BROWARD COUNTY, FLORIDA**

West classroom, looking northeast
Photo #11 of 12

West classroom, looking northwest
Photo #12 of 12



DEERFIELD SCHOOL
Deerfield Beach, Broward Co., FL
Locator Map within Deerfield Beach

NOTE 1

SEE NOTE 1

SEE NOTE 1

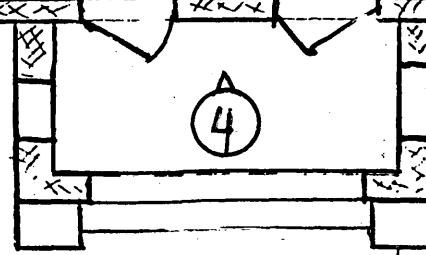
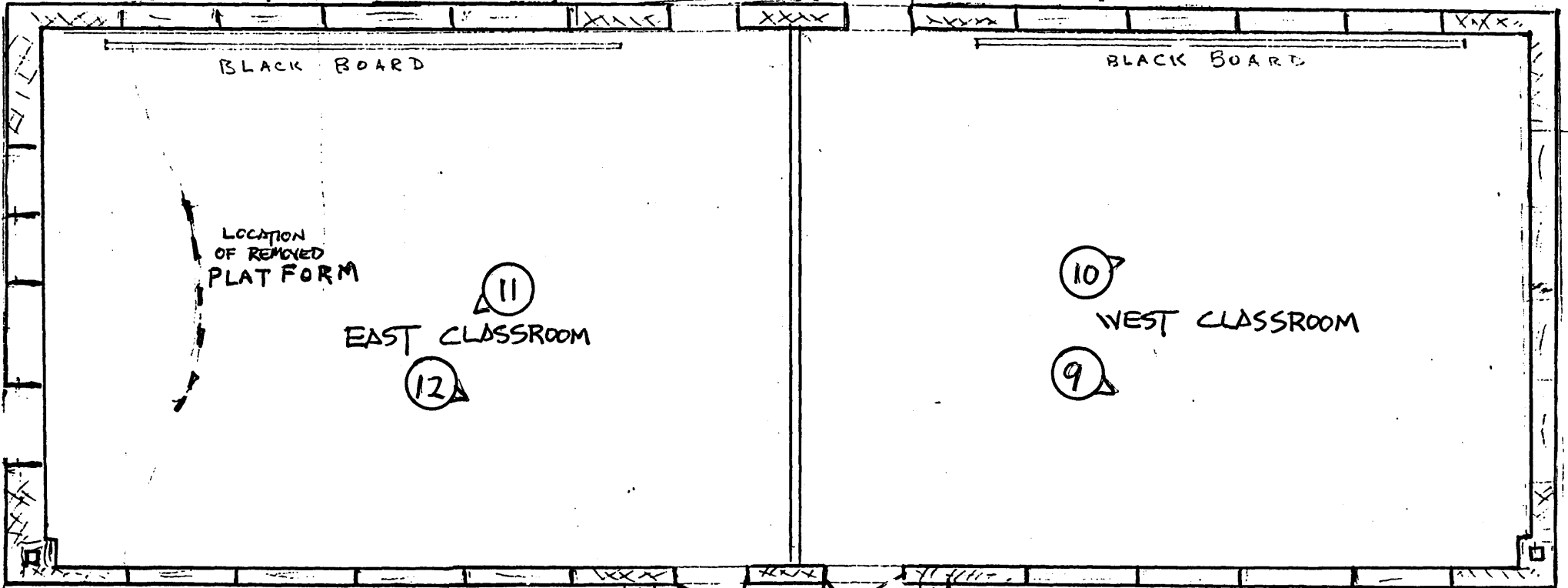
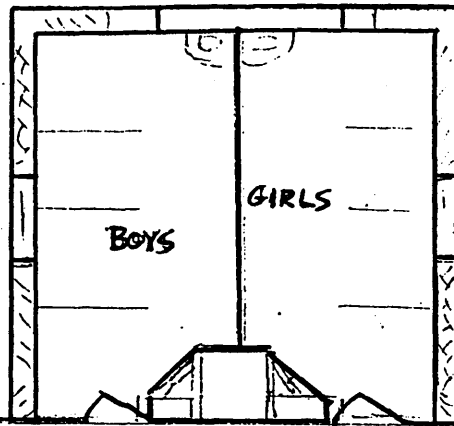
SEE NOTE 1

SEE NOT

U.S. HIGHWAY NO. 1

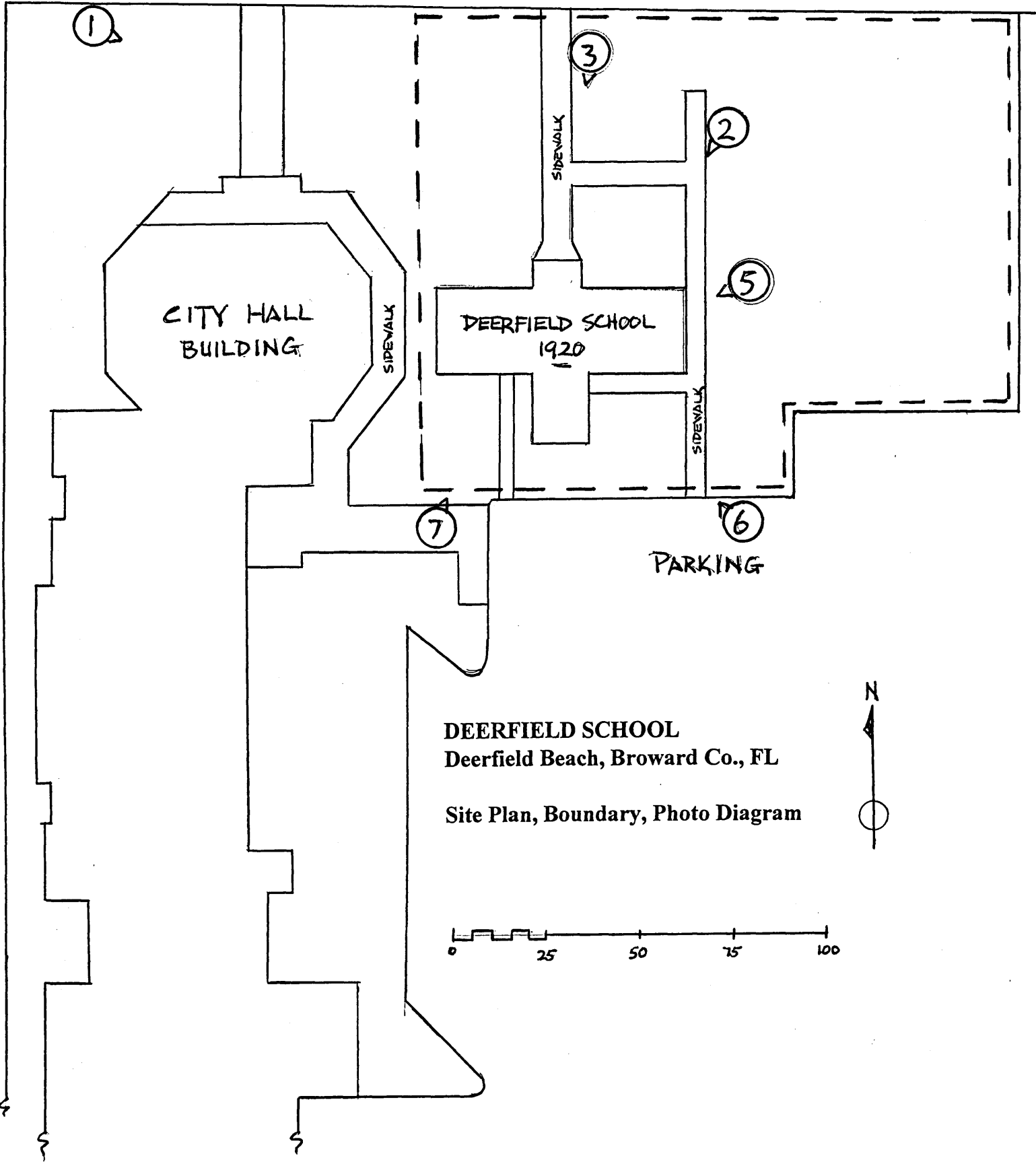
DEERFIELD SCHOOL
Deerfield Beach, Broward Co., FL

Floor Plan, Photo Diagram



2ND STREET

2ND AVENUE



CITY HALL BUILDING

DEERFIELD SCHOOL
1920

PARKING

DEERFIELD SCHOOL
Deerfield Beach, Broward Co., FL

Site Plan, Boundary, Photo Diagram

