



RFD HOTEL

LYNDIA  
BEER

RFD CLUB

RFD  
HOTEL

CR-07-700 Rio Hotel, 210 South  
Main, Helper Commercial Historic  
District, Carbon County, Utah.

Photo By: Kent Powell, May 1978  
Negative File: Utah State His-

DOE JUL 24 1979

torical Society.

View: Front of building looking  
from East to West.

JUN 21 1978

① of 36

**RAILROAD Y.M.C.A.**



CR-07-711 Railroad YMCA, 794  
South Main, Helper Commercial  
Historic District, Carbon County  
Utah. DOE 24 1979 (2) of 36

Photo by: Kent Powell, May 1978

*Helper Commercial District*  
Negative Filed: Utah State His-  
torical Society

View: Front of building looking  
from east to west.

JUN 21 1978



DOE

JUL 24 1979

③ of 36

CR-07-661 August Citizzette Sr.  
House, 26 South Main St., Helper  
Commercial Historic District,  
Carbon County, Utah

JUN 21 1978

Photo by: Kent Powell, May 1978  
Negative Filed: Utah State His-  
torical Society.

View: Front and north side look-  
ing from northeast to southwest.



FIRST SECURITY  
STATE BANK

FIRST  
SECURITY  
STATE BANK  
OF HELPER



EXIT  
SINCE

CR-07-667 First Security State  
Bank (Intrusion), Helper Commer-  
cial Historic District, Carbon  
County, Utah

Photo by: Kent Powell, May 1978

Negative Filed: Utah State His-  
torical Society.

View: Front of building looking  
from east to west.

JUN 21 1978

4 of 36

24 1979  
DOE





Utah HOTEL  
family rooms

CHEVROLET

102-937

Utah HOTEL

CHEVROLET

102-937

CR-07-671 Utah Hotel, 76 South :  
Main Street, Helper Commercial  
Historic District, Carbon County,  
Utah.

Photo by: Kent Powell, May 1978

*Helper Commercial District*

Negative Filed: Utah State His-  
torical Society JUL 24 1979 DOE

View: Front and north side,  
looking from northeast to  
southwest.

JUN 21 1978



CR-07-719-720 St. Anthony  
Church and Rectory, 5 and 7  
South Main Street, Helper Com-  
mercial Historic District,  
Carbon County, Utah

*Helper Commercial Dist.*

Photo By: Kent Powell, May 1978

Negative Filed: Utah State His-  
torical Society

View: Front and north sides  
looking from northwest to

southeast.

JUN 21 1978

*DOE*  
JUL 24, 1979



SOUTH MAIN

CR-07-732-733 Kessler Court  
Houses, Helper Commercial His-  
toric District, Carbon County,  
Utah.

⑦ of 36

JUN 21 1978

*Helper Commercial Dist*  
JUL 24 1978 DOE

Photo By: Kent Powell, May 1978  
Negative Filed: Utah State His-  
torical Society.  
View: Front and west sides  
looking from northwest to south-  
east.



LA SALLE  
HOTEL  
MODERN

RECORD STORE

LUNCH - DINNERS  
SPAGHETTI - PIZZA

LaSalle  
FINE FOOD

STEAKS - CROISSANTS  
BANQUETS - PARTIES

LASALLE  
Coca-Cola  
DINE - DANCE

LASHLE CLUB

COFFEE

L  
LA SALLE  
DINNER

CR-07-840 LaSalle Hotel, 307  
South Main, Helper Commercial  
Historic District, Carbon  
County, Utah.

8 of 36

Photo By: Kent Powell, May 1978

*Helper Commercial Dist*

Negative Filed: Utah State Historical Society.

JUL 24 1979

DOE

View: Front and north side  
looking from northeast to  
southwest.

JUN 21 1978





EMERALD MOUNTAIN  
HALL

FRIENDLY

TAVERN

FRIENDLY TAVERN

DRINK  
Coca-Cola

Lo Sails  
LOUNGE  
BARBER SHOP

Dodge

NY 324A

CR-07-842 Knights of Pythias  
Hall, 330 South Main, Helper  
Commercial Historic District,  
Carbon County, Utah.

Photo By: Kent Powell, May 1978

Negative Filed: Utah State His-  
torical Society

View: Front and north side  
looking from northeast to  
southwest.

JUN 21 1978

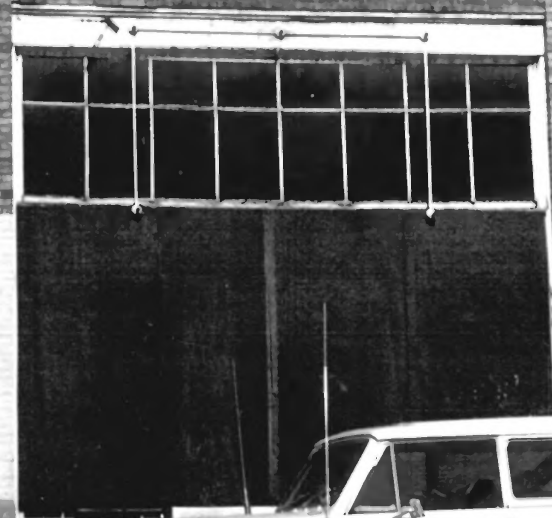
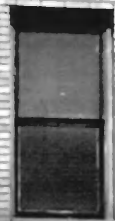
9 of 36

JUN 24 1979 DOE

19

NEW HOUSE  
BUILDING

21



Palace  
HOTEL

BO  
FA  
REST

H MAIN



CR-07-695 New House Building  
190 South Main, Helper Commer-  
cial District, Carbon County,  
Utah.

Photo By: Kent Powell. May 1978

Negative Filed: Utah State His-  
torical Society

View: Front of building looking  
from east to west.

JUN 21 1978

JUL 24 1979  
DOE

10 of 36



COTTON  
BELT



Ship and Travel  
SANTA FE  
- all the way

COTTON  
BELT

Riv. ticanza

PEDESTRIANS  
DO NOT CROSS  
IN CROSSINGS  
DO NOT  
GO BACKWARDS

HELPER HISTORIC DISTRICT

Carbon County, Utah

Taken by P. Notarianni, 3-79

Negative at USHS

DOE

JUL 24 1979

*Helper Commercial District*

Janet Street Underpass

View from west to east

*11 of 36*

JUN 4 1979

B  
O  
N  
N  
I  
E

LANES

WELCO  
BONLE S

KLOTHES

KLOSET

Jeep



HELPER HISTORIC DISTRICT

Carbon County, Utah

Taken by P. Notarianni, 3-79

Negative at USHS

*Helper Commercial District*

*DOE*

Bonnie Bowling Lane's 2 4 1979

Site CR-07-673

94 South Main

East facade

JUN 4 1979

*12 of 36*



HOTEL UTAH

Utah HOTEL  
family rooms

The Vogue

24<sup>th</sup> OFF  
LADIES

NO TRESPASSING  
PARK HERE  
WHILE  
SHOPPING  
AT  
TheVOGUE

STAIRS ONLY  
PERMIT PARKING  
BY  
30-27-24-0001



HELPER HISTORIC DISTRICT

Carbon County, Utah

Taken by P. Notarianni, 3-79

Negative at USHS

*Helper Commercial District*  
Helper Main Street, Sites CR-07-  
672, 671, 670, west central end

DOE

24 1979 JUN 4 1979

13 of 36



THE RAND HOTEL

HOTEL

VELTRA'S  
Rexall  
DRUGS

VELTRA'S  
Rexall  
DRUGS

BEAUMONT  
THEATRE

WALSH

BAKERY

HOTEL

709 TIGGERS

Dave

HELPER HISTORIC DISTRICT

Carbon County, Utah

Taken by P. Notarianni, 3-79

Negative at USHS

*Helper Commercial District*

Helper Main Street, Sites CR-07-  
684-695, west central end

*DOE*

JUL 24 1979

JUN 4 1979

*140836*

HOTEL

VELTAT'S  
Rexall  
DRUGS

VELTAT'S  
Rexall DRUGS

The Toggery



*Helper Commercial District*  
HELPER HISTORIC DISTRICT

Carbon County, Utah

Taken by P. Notarianni, 3-79

Negative at USHS

Vettri's Drug, Site CR-07-686

124 South Main

East facade

JUL 24 1979  
DOE

15 of 36

JUN 4 1979

# Mutual

SALE

LEES  
CARPETS  
MUTUAL FURNITURE

Spring Sale

BENNETT'S  
PAINT  
SALE

Spring Sale



*Helper Commercial District*

HELPER HISTORIC DISTRICT

Carbon County, Utah

Taken by P. Notarianni, 3-79

Negative at USHS

Mutual Furniture, Site CR-07-

690, 148 South Main

East facade

DOE  
JUL 24 1979

*14 of 36*

JUN 4 1979





BEER

HOTEL

CAFE

CAFE

HANDY MARKET

HOLDENS



HELPER HISTORIC DISTRICT

Carbon County, Utah

Taken by P. Notarianni, 3-79

Negative at USHS

*Helper Commercial District*

JUN 24 1979

DOE

Helper Main Street Sites CR-07-  
699, 704, 700 southwest end

*17 of 36*

JUN 4 1979



NEW HOUSE  
BUILDING

HOTEL  
NEWHOUSE

Palace  
HOTEL

FAMILY  
RESTAURANT

UTAH STATE  
LIQUOR  
AGENCY

IVY ST  
1954

*Helper Commercial District*

HELPER HISTORIC DISTRICT

Carbon County, Utah

Taken by P. Notarianni, 3-79

Negative at USHS

DOE  
JUL 24 1979

Helper Main Street Sites CR-07-  
695-694, 693

West Central end

*18 of 36*

JUN 4 1979



*Helper Commercial District*

HELPER HISTORIC DISTRICT

Carbon County, Utah

Taken by P. Notarianni, 3-79

Negative at USHS

Helper Main Street

Extreme southeast end

*DOE*  
JUL 24 1979

JUN 4 1979

*19 of 36*

ELPER LAUNDRY & Dry CLEANING CENTER

*in Operated*  
LAUNDRY &  
CLEANING

Double & Single

Speed Queer

Single Load 30' Double Load 35' Drying 5'



*Helper Commercial District*

HELPER HISTORIC DISTRICT

Carbon County, Utah

Taken by P. Notarianni, 3-79

Negative at USHS

*DOE*

JUL 24 1979

Helper Main Street, Site CR-07-  
750 Southeast end

*20 of 36*

JUN 4 1979





TEXACO

SELF  
SERVE

PLEASE

Leadfree  
Texaco

TEXACO  
100% MOTOR OIL

*Helper Commercial District*  
HELPER HISTORIC DISTRICT

Carbon County, Utah

Taken by P. Notarianni, 3-79

Negative at USHS

JUL 24 1979  
DOE

Texaco Service Station

Site CR-07-748

Helper Main Street (east side)

West facade

*21 of 36*

JUN 4 1979

ACO

CARPETS

12



# *Helper Commercial*  
HELPER HISTORIC DISTRICT

Carbon County, Utah

Taken by P. Notarianni, 3-79

Negative at USHS JUL 24 1979  
DOE

Helper Main Street, Sites CR-07-  
749=750, southeast end

JUN 4 1979

22 of 36



*Helper Commercial District*  
HELPER HISTORIC DISTRICT

Carbon County, Utah

Taken by P. Notarianni, 3-79

Negative at USHS

*DOE*  
JUL 24 1979

Rio Grande Railroad Station  
CR-07-747, Helper Main  
Street, west end.

*23 of 36*

JUN 4 1979



Barbara's  
BOUTIQUE

FOOD CENTER  
QUALITY FOODS

Food town

SENIOR  
CENTER

10

SEGINITZ  
OPTICAL

CHUCK'S  
Wholesale Agency  
PHARMACY

WOODY'S

Jewelry

SK

*Helper Commercial District*

HELPER HISTORIC DISTRICT

Carbon County, Utah

Taken by P. Notarianni, 3-79

Negative at USHS

*DOE*

JUL 24 1979

Helper Main Street

East/Central portion

JUN 4 1979

*27 of 36*





#7 *Helper Commercial District*

HELPER HISTORIC DISTRICT

Carbon County, Utah

Taken by P. Notarianni, 3-79  
Negative at USHS

*DOE*  
JUL 24 1979

Helper Main Street, Sites CR-07-  
793-797, southeast end

*25 of 34*

JUN 4 1979



*Helper Commercial District*  
HELPER HISTORIC DISTRICT

Carbon County, Utah

Taken by P. Notarianni, 3-79

Negative at USHS

*DOE*

JUL 24 1979

Helper Main Street, Sites CR-07-  
794-797. Extreme southeast  
end

*26 of 36*

JUN 4 1979



*Helper Commercial District*

HELPER HISTORIC DISTRICT

Carbon County, Utah

Taken by P. Notarianni, 3-79

Negative at USHS

*DOE*  
JUL 24 1979

Helper Main Street

Extreme southeast end

JUN 4 1979

*27 of 36*



HELENS

CAFE  
CAFE

HOTEL

*Helper Commercial District*

HELPER HISTORIC DISTRICT

Carbon County, Utah

Taken by P. Notarianni, 3-79

Negative at USHS

Helper Main Street

Southwest end

DOE  
JUL 2 4 1979

*28 of 36*

JUN 4 1979





# 3 *Helper Commercial District*

HELPER HISTORIC DISTRICT

Carbon County, Utah

Taken by P. Notarianni, 3-79

Negative at USHS

Helper Main Street-Sites CR-07-  
793-797. Southeast end. 4. 1979 DOE

*Jul*

*2907 36*

JUN 4 1979



CITY HALL

KEEP  
OFF  
GRASS

POLICE  
PARKING  
ONLY

*Helper Commercial District*

HELPER HISTORIC DISTRICT

Carbon County, Utah

Taken by P. Notarianni, 3-79

Negative at USHS

*DOE*  
JUL 24 1979

Helper City Hall-Site CR-07-735

West facade

*30 of 36*

JUN 4 1979



*Helper Commercial District*

HELPER HISTORIC DISTRICT

Carbon County, Utah

Taken by P. Notarianni, 3-79

Negative at USHS

*DOE*  
JUL 24 1979

First West and Hill Street

Site CR-07-673-674

View southeast to northwest

*31 of 36*

JUN 4 1979



# *Helper Commercial District*

HELPER HISTORIC DISTRICT,  
Carbon County, Utah

Taken by P. Notarianni, 3-79

Negative at USHS

DOE  
JUN 24 1979

Helper Main Street at  
Kessler Court, East side.

JUN 4 1979

*32 of 36*





CSB

DRIVE-IN BANKING

MUTUAL

FURN. HOME CO.

ENTRANCE

MUTUAL FURN-HOME CO.



*Helper Commercial District*

HELPER HISTORIC DISTRICT

Carbon County, Utah

Taken by P. Notarianni, 3-79

Negative at USHS

DOE  
JUL 24 1979

First West Street, Site CR-07-690. Rear of Mutual Furniture Company (west side)

148 South Main

JUN 4 1979

*33 of 36*



*So. Cent.*  
*Helper Commercial District*

HELPER HISTORIC DISTRICT

Carbon County, Utah

Taken by P. Notarianni, 3-79

Negative at USHS

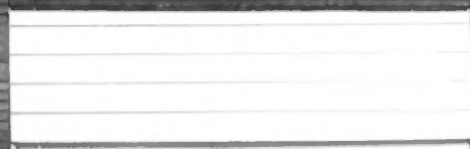
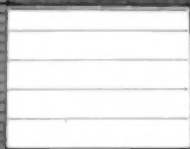
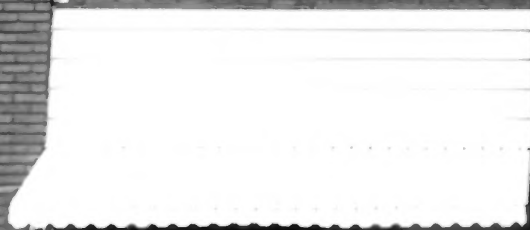
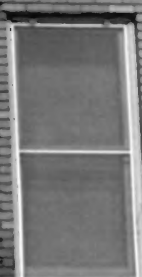
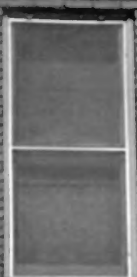
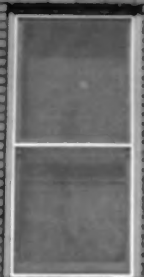
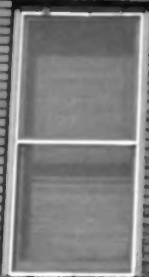
*DOE*  
JUL 24 1979

First West Street, Sites CR-07-715-718, south central portion

*34 of 36*

JUN 4 1979

B. FLAIM  
19 BLOCKS



*Helper Commercial District*

CR-07-670 B. Flaim Black, 74  
South Main Street, Helper Commer-  
cial Historic District, Cedar  
City, Utah.

Photo by: Kent Powell, May 1978

Negative Filed: Utah State His-  
torical Society

View: Front of building looking  
from east to west.

*35 of 36*

June 1, 1978



BOB'S FAMILY  
RESTAURANT  
PARKING

#25 Helper Commercial District

HELPER HISTORIC DISTRICT

CARBON COUNTY, Utah

Taken by P. Notarianni, 3-79

Negative at USHS

JUL 24 1979  
DOE

West end (rear) of 176 Main,  
Site CR-07-693

36 of 36 JUN 4 1979