



Tunturi, Fred: House, Pontanna
Multnomah County, Oregon

Sharon Bolden

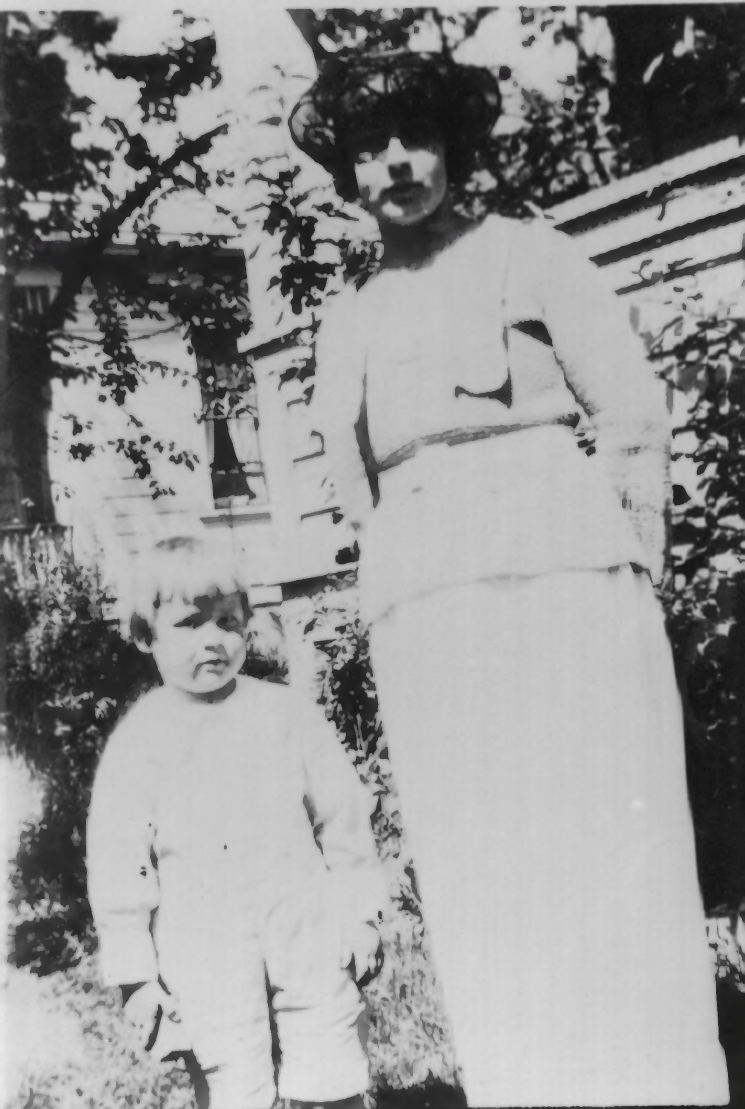
12/10/95

5115 NE Garfield

Portland, OR. 97211

Fred Tunturi and unknown woman

#1 of 30



Tunturi, Fred: House, Pontiac
Multnomah County, Oregon

Sharon Bolden

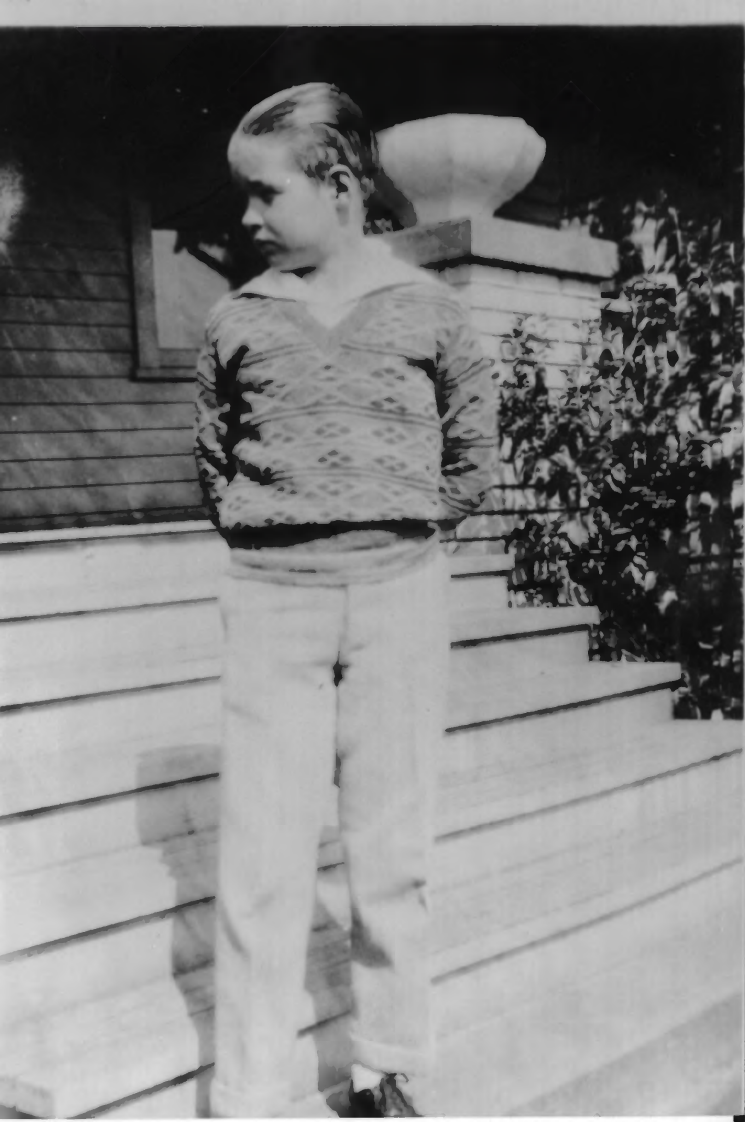
12/10/95

5115 NE Garfield

Portland, OR. 97211

Aino Tunturi and son, Archie

#2 OF 30



Tunturi, Fred: House, Ponzan
Multnomah County, Oregon
Sharon Bolden

12/10/95
515 NE Garfield
Portland, OR 97211

Archie on the front porch stairs
Tunturi

#3 of 30



Tunturi, Fred; House, PORTLAND
Multnomah County, Oregon

Sharon Bolden

12/10/95

5115 NE Garfield

Portland, OR. 97211

Archie Tunturi and his
wife, Ruth Tunturi.

#4 of 30



Tunturi, Fred, House, ~~Portland~~
Multnomah County, Oregon

Sharon Bolden

12/10/95

5115 NE Garfield

Portland OR 97211

East Elevation, when the house was first
built, + BEFORE the 3rd + 4th porch
columns were added

#5 OF 30



Tunturi, Fred, House, ~~Don't know~~
Multnomah County Oregon

Sharon Bolden

12/10/95

5115 NE Garfield

Portland, OR. 97211

East Elevation

#6 of 30



Tunturi, Fred, House, Pontano
Multnomah County Oregon

Sharon Bolden

12/10/95

5115 NE Garfield

Portland, OR. 97211

North Elevation

#7 OF 30



Tunturi, Fred, House, ~~Portland~~
Multnomah County, Oregon

Sharon Bolden

12/10/95

5115 NE Garfield

Portland, OR. 97211

West Elevation

8 OF 30



Tunturi, Fred, House, Ponzano
Multnomah County Oregon

Sharon Bolden

12/10/95

5115 NE Garfield

Portland, OR. 97211

South Elevation

9 OF 30



Tunturi, Fred, House, Donzans
Multnomah County Oregon

Sharon Bolden

12/10/95

5115 NE Garfield
Portland, OR - 97211

Porch Detail

#10 of 30



Tunturi, Fred, House
Portland
Multnomah County Oregon

Sharon Bolden

12/10/95

5115 NE Garfield

Portland, OR. 97211

Eave Detail

11 of 30



Tunturi, Fred, House, Ponzano
Multnomah County Oregon

Sharon Bolden

12/10/95

5115 NE Garfield

Portland, OR 97211

Living Room: South Wall

#12 OF 30



Tunturi, Fred, House
Multnomah County, Oregon

Sharon Bolden

12/10/95

5115 NE Garfield
Portland OR 97211

Living Room

13 17 30



Tunturi, Fred, House, PORTLAND
Multnomah County, Oregon

Sharon Bolden

12/10/95

5115 NE Garfield

Portland, OR. 97211

Living Room Entry Detail

#14 OF 30



Tunturi, Fred, House, ~~Montana~~
Multnomah County, Oregon

Sharon Bolden

12/10/95

5115 NE Garfield

Portland, OR 97211

North Dining Room Wall Tripartite
Arrangement + East Wall Picture Window

#15 of 30



Tunturi, Fred, House
Multnomah County, ~~Portland~~ Oregon

Sharon Bolden

12/10/95

5115 NE Garfield

Portland, OR, 97211

North Dining Room Built
in Cupboard Detail

#16 of 30



Tunturi, Fred, House, ~~Portland~~
Multnomah County, Oregon

Sharon Bolden

12/10/95

5115 NE Garfield

Portland, OR. 97211

Dining Room South Wall Pass Through

17 of 30



Tunturi, Fred, House, PORTLAND
Multnomah County, Oregon

Sharon Bolden

12/10/95

5115 NE Garfield

Portland, OR, 97211

Dining room wood furnace grate

#18 OF 30



Tun turi, Fred, House
Multnomah County, Oregon

^{PORTLAND}

Sharon Bolden

12/10/95

5115 NE Garfield

Portland, OR. 97211

Central Hallway

19 OF 20



Tunturi, Fred, House, ~~Portman~~
Multnomah County, Oregon

Sharon Bolden

12/10/95

5115 NE Garfield

Portland, OR. 97211

Doorway Detail.

20 of 30



Tunturi, Fred, House, Portland
Multnomah County, Oregon

Sharon Bolden

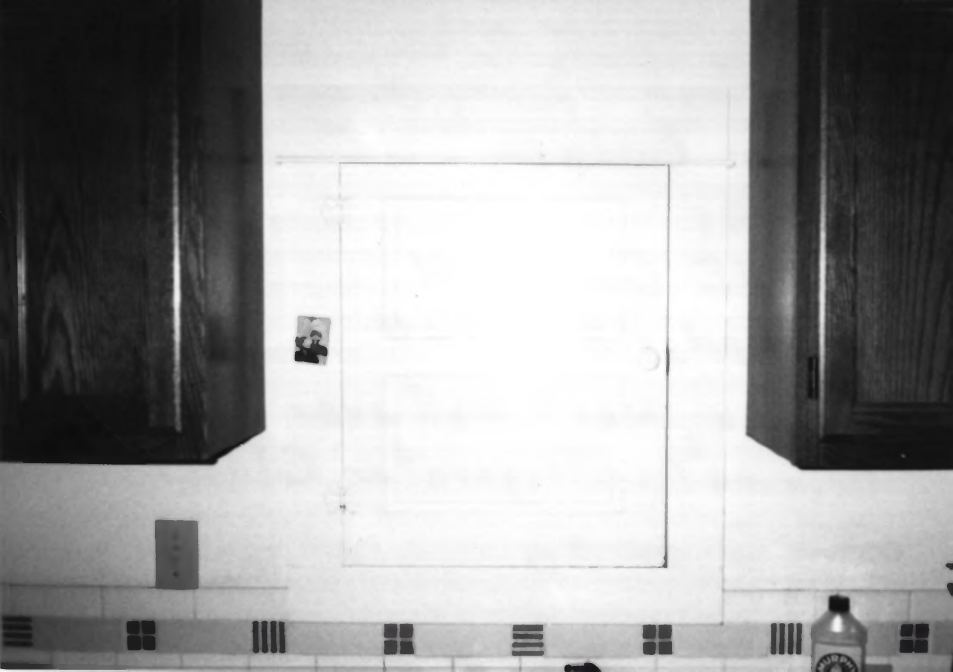
12/10/95

5115 NE Garfield

Portland, OR 97211

Kitchen, North wall with window

#21 OF 30



Tunturi, Fred, House, Pentzans
Multnomah County, Oregon
Sharon Bolden

12/10/95

5115 NE Garfield

Portland, OR. 97211

Kitchen, West Wall over sink,
Original refrigerator closet.

#22 OF 30



Tunturi, Fred, House, Portland
Multnomah County, Oregon

Sharon Bolden

12/10/95

5115 NE Garfield

Portland, OR. 97211

Master Bedroom, door to SW bedroom,
South Wall window, and 2 of 3
mirrored closets

23 of 30



Tunturi, Fred, House, PORTLAND
Multnomah County, Oregon

Sharon Bolden

12/10/95

5115 NE Garfield

Portland, OR - 97211

SW Bedroom Corner Windows

#24 of 30



Tunturi, Fred, House
Multnomah County, ^{PORTLAND} Oregon

Sharon Bolden

12/10/95

5115 NE Garfield

Portland, OR, 97211

Bathroom

25 OF 30



Tun turi, Fred, House, Portland
Multnomah County, Oregon

Sharon Bolden

12/10/95

5115 NE Garfield

Portland, OR. 97211

Northwest Bedroom

#26 OF 30



Tunturi, Fred, House, ^{Portland}
Multnomah County, Oregon

Sharon Bolden

12/10/95

5115 NE Garfield

Portland, OR 97211

Door Handles + locks

#27 of 30



Tunturi, Fred, House, Pontano
Multnomah County, Oregon

Sharon Bolden

12/10/95

5115 NE Garfield

Portland, OR. 97211

Attic, North Wall

#28 of 30



Tunturi, Fred, House, ^{PORTLAND}
Multnomah County, Oregon

Sharon Bolden

12/10/95

5115 NE Garfield

Portland, OR, 97211

Cast Iron Wood Furnace,
Basement

#29 OF 30



Tunturi, Fred, House, ~~multnomah~~
Multnomah County, Oregon

Sharon Bolden

12/10/95

5115 NE Garfield

Portland, OR. 97211

Living Room - Stickley style furnishings

#30 6T-30