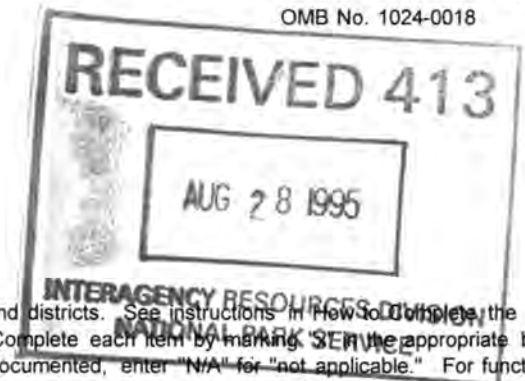


**United States Department of the Interior  
National Park Service**

**National Register of Historic Places  
Registration Form**



This form is for use in nominating or requesting determinations for individual properties and districts. See instructions in How to Complete the National Register of Historic Places Registration Form (National Register Bulletin 16A). Complete each item by marking the appropriate box or by entering the information requested. If any item does not apply to the property being documented, enter "N/A" for "not applicable." For functions, architectural classification, materials, and areas of significance, enter only categories and subcategories from the instructions. Place additional entries and narrative items on continuation sheets (NPS Form 10-900a). Use a typewriter, word processor, or computer, to complete all items.

**1. Name of Property**

historic name Tavern Acres Historic District

other names/site number \_\_\_\_\_

**2. Location**

street & number Bradstreet Road, Green and Main Street, Park Way N/A not for publication

city or town North Andover N/A vicinity

state Massachusetts code 025 county Essex code 009 zip code 01845

**3. State/Federal Agency Certification**

As the designated authority under the National Historic Preservation Act of 1986, as amended, I hereby certify that this  nomination  request for determination of eligibility meets the documentation standards for registering properties in the National Register of Historic Places and meets the procedural and professional requirements set forth in 36 CFR Part 60. In my opinion, the property  meets  does not meet the National Register Criteria. I recommend that this property be considered significant  nationally  statewide  locally. ( See continuation sheet for additional comments.)

Judith B. McDonough  
Signature of certifying official/Title

8/21/95  
Date

Judith B. McDonough, Executive Director  
Massachusetts Historical Commission, State Historic Preservation Officer

State or Federal agency and bureau

In my opinion, the property  meets  does not meet the National Register criteria. ( See continuation sheet for additional Comments.)

Signature of certifying official/Title

Date

State or Federal agency and bureau

**4. National Park Service Certification**

I, hereby certify that this property is:

- entered in the National Register  
 See continuation sheet.
- determined eligible for the National Register  
 See continuation sheet.
- determined not eligible for the National Register
- removed from the National Register
- other (explain): \_\_\_\_\_

Signature of the Keeper

Date of Action

Edson H. Beall

9/29/95

Entered in the  
National Register

Tavern Acres Historic District  
Name of Property

Essex County, MA  
County and State

**5. Classification**

**Ownership of Property**

(Check as many boxes as apply)

- private
- public-local
- public-State
- public-Federal

**Category of Property**

(Check only one box)

- building(s)
- district
- site
- structure
- object

**Number of Resources within Property**

(Do not include previously listed resources in the count.)

Contributing	Noncontributing	
35	4	buildings
1		sites
		structures
1		objects
37	4	Total

**Name of related multiple property listing**

(Enter "N/A" if property is not part of a multiple property listing.)

N/A

**Number of contributing resources previously listed in the National Register**

0

**6. Function or Use**

**Historic Functions**

(Enter categories from instructions)

DOMESTIC: single dwelling

EDUCATION: library

LANDSCAPE: park

**Current Functions**

(Enter categories from instructions)

DOMESTIC: single dwelling

EDUCATION: library

LANDSCAPE: park

**7. Description**

**Architectural Classification**

(Enter categories from instructions)

LATE 19TH AND 20TH CENTURY REVIVALS:

Colonial Revival, Italian Renaissance

LATE 19TH AND EARLY 20TH CENTURY AMERICAN

MOVEMENTS: Craftsman

**Materials**

(Enter categories from instructions)

foundation STONE: fieldstone, CONCRETE

walls WOOD: weatherboard, shingle, BRICK

STUCCO, SYNTHETICS: vinyl

roof ASPHALT, TERRA COTTA

other

**Narrative Description**

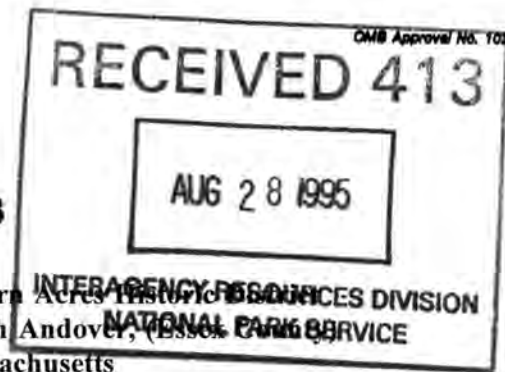
(Describe the historic and current condition of the property on one or more continuation sheets.)

United States Department of the Interior  
National Park Service

# National Register of Historic Places Continuation Sheet

Section number 7 Page 1

INTERAGENCY RESOURCES DIVISION  
NATIONAL PARK SERVICE  
Tavern Acres Historic District  
North Andover, Essex County  
Massachusetts



## 7. DESCRIPTION

The Tavern Acres Historic District is located off Main Street in the northwest section of North Andover. It is a well defined planned subdivision with all properties retaining architectural and historical integrity articulating the Olmsted Brothers plan. It is a collection of twenty dwellings planned around the 1907 Stevens Memorial Library and Memorial Park at Main and Davis Streets. Most of the garages were also planned and constructed as part of the subdivision and also contribute to the significance of the district. Thus the district consists of thirty-five contributing buildings including the Library, twenty dwellings and fourteen garages, one contributing site, the Memorial Park, and one object, the Patriots Monument. Tavern Acres District is in that part of North Andover northwest of the Old Center and near the commercial and former industrial center of the Town.

The district boundaries encompass, on the north end, the one acre lot of the Stevens Memorial Library, Davis Street which runs between Main and Green Streets and also separates the Library and Memorial Park, and the area south of Memorial Park including Bradstreet Road, Park Way and three properties on the west side of Main Street. The district does not include two properties on Bradstreet Road at Tavern Road and three on Main Street north of Tavern Road due to their substantially later construction dates and lack of association with the developers of this district.

Properties included in the district are part of a planned sub-division and are substantially uniform in size with most residential lots between 8500 and 10,000 square feet except 15 and 27 Bradstreet Road which are one and one-half and two and one-half lots in size. The other exceptions are the one-acre Library lot and the two and three-quarters acre Park area. The setbacks of the dwellings are uniform providing small front yards with pathways from the sidewalk to the main entrances.

Contributing properties range in date from 1907 when the Steven Memorial Library was constructed to 1924 when the dwellings included in the district were completed. The overall landscape of the Tavern Acres District is that of a suburban subdivision with large mature trees ranging from beech to blue spruce on many of the properties and a park which is surrounded by clusters of sugar maples, some hawthornes, lilacs and other shrubbery around the Patriots' Monument opposite the Library.

Dwellings are two and one-half story Colonial Revival, Dutch Colonial Revival and Craftsman styles. Garages are one story for one or two cars with hipped and gabled roofs all in a Colonial Revival or Craftsman style. Construction is of wood with the exception of the Library which is a two-story brick structure with one-story flanking wings. All of the dwellings, the planned layout of streets, and the Park date from 1920 to 1924. The dwellings are sheathed in wood shingles with the exception of 27 Bradstreet Road which is sheathed in wood clapboards and 38 Bradstreet Road which has been covered with synthetic siding. All garages are wood except those at 38 Bradstreet Road and 14 Park Way, both of which are stucco, the original surface of many of the houses and companion garages. Foundations are concrete or rubblestone and mortar and all roofs have asphalt shingles except the

(continued)

United States Department of the Interior  
National Park ServiceNational Register of Historic Places  
Continuation SheetTavern Acres Historic District  
North Andover, (Essex County)  
MassachusettsSection number 7 Page 2

Library which retains its terracotta tile roof of 1907. The Revival styles, the size and scale of the dwellings, and the location on lots due to restrictions in the deeds form an overall unity of design with variation in smaller architectural detail and the combinations thereof. The only non-contributing structures are four garages built after the period of significance. However, they are in the style of the surrounding properties and entirely appropriate additions to the properties.

Residential Buildings

The twenty dwellings display three styles with similarities of floor plans or details. Research has shown a Plan number for some of the dwellings, demonstrating the similarities and the way in which the properties were marketed and built. These are noted as Parsons Plans referring to the architectural firm of E.M. Parsons. The plans and styles exhibited also overlap in design detail which provide variety within the unity of the planned development. Common to many of the dwellings are clustered multilight windows, center entrances with flanking paired three-quarter side lights, and two chimneys - one interior and one exterior, side porches, some of which have been enclosed, and flat cut and punched balustrades.

The Colonial Revival properties include 2 Park Way (MacDonald, 1920, Map # 43-11), 14 Park Way (Frederick Bedell, 1920, Map # 43-14, Photograph # 7 and 10), 64 Green Street (Frank Lena, 1920, Map # 43-24), 27 Bradstreet Road (Carl Vetter, 1920, Map # 43-21, Photograph # 5), 28 Bradstreet Road (Bradbury, 1920, Map # 43-15), and 38 Bradstreet Road (Storey, 1920, Map # 43-16). Each is two stories with a hipped roof except 27 Bradstreet Road which is a two and one-half story gambrel roof dwelling.

The dwellings at 14 Park Way and 38 Bradstreet Road display the same plan with one-story side sun porch. Each is a center entrance three-bay dwelling with a wide hipped roof overhang. The house at 14 Parkway retains the exposed rafter ends giving the building a Craftsman flair. Each dwelling has one interior chimney and one exterior chimney on an end wall. The fenestration patterns are identical with three-part windows flanking the center entrance. The center window displays an 8/1 sash with flanking 4/1 side sash. Second-story windows are paired 6/1 with a three-part window over the center entrance having a 6/1 sash with flanking 4/1 side sash. The center entrance displays a panelled door with flanking paired three-quarter side lights over a panelled base. The eyebrow doorhood is supported by slightly projecting shingled and tapered pilasters and a narrow bracket as a decorative detail. Each of these dwellings and others originally had pebble-struck stucco facades, which have been re-covered in wood shingles with wide exposure. The garage at 14 Park Way retains the stucco siding.

(continued)

United States Department of the Interior  
National Park ServiceNational Register of Historic Places  
Continuation SheetTavern Acres Historic District  
North Andover, (Essex County)  
MassachusettsSection number 7 Page 3

The dwellings at 2 Park Way and 64 Green Street also display this plan with some variations or alterations. The house at 2 Park Way has a new entrance porch and exposed rafters masked by gutters. At 64 Green Street the residence has a more elaborate front porch with heavy round stucco columns, reminiscent of the original house sheathing, supporting a roof which is topped by a balustrade. Each of these two dwellings has a hipped roof garage with exposed rafter ends, a combination of Colonial Revival and Craftsman details.

The other two properties which display Colonial Revival characteristics are 27 and 28 Bradstreet Road, situated opposite each other. The one on the west side, 27 Bradstreet Road, is one of the most distinguished properties in the district. It is the only two and one-half story dwelling with a gambrel roof and clapboard siding. The center entrance house is three bays wide with large windows displaying 8/8 sash and projecting lintels or crown moldings. The center entrance porch is supported by round tapered columns and pilasters shielding the panelled door with flanking three-quarter side lights. The house has a two-story rear addition and a one-story side sunporch ell. Similar to other houses in the district there are two chimneys - one interior and one exterior. Besides the projecting molded lintels over each window there are narrow corner boards, a narrow dentil eave molding, and a half elliptical louvered vent in the gable peaks.

At 28 Bradstreet is a dwelling which has a combination of Colonial Revival and Craftsman styles and is asymmetrical in fenestration. Under a wide hipped roof porch with exposed rafters is the entrance and a single 6/6 window. To the right of the entrance are two small 4/4 windows with 6/6 above and to the left of the porch is a single 6/6 up and down and two small second-story 4/4 windows as well. A two-story side addition encloses the once exterior chimney.

Four dwellings in the Dutch Colonial Style are recorded as Parsons' Plan #5 referring to the house plans prepared by the Boston firm, E.M. Parsons. They are the 399 Main Street (Robert Disney, 1920, Map # 43-13), 405 Main Street (Wallace Coats, 1920, Map # 56-33, Photograph # 8) 9 Bradstreet Road (Hammond, 1920, Map # 43-23) and 15 Bradstreet Road (Arthur Emmons 1920, Map # 43-22). Each is three bays wide and two deep with a center entrance shielded by an open porch. Three-part windows flank the center entrances and have a center window of 8/1 sash with 4/1 side sash. The fenestration is similar to that of the Colonial Revival dwellings. Also each has an interior and an exterior chimney and a side sunporch. The distinguishing feature is the flared eaves of the roof.

Of similar plan and fenestration is 54 Bradstreet Road (Herman Cass, 1923-24, Map # 44-01). This was the last property built in this subdivision under the leadership of the Tavern Acres Land Company. Its similarities to Plan #5 include its gambrel roof form, chimney placement, and three-part clustered windows. The second story is marked with a decorative frieze band. The house has wood shingles and is constructed on a fieldstone foundation.

(continued)

United States Department of the Interior  
National Park ServiceNational Register of Historic Places  
Continuation SheetTavern Acres Historic District  
North Andover, (Essex County)  
MassachusettsSection number 7 Page 4

The dwelling at 59 Bradstreet Road (J.W. Fenton, 1923, Map # 44-04, Photograph # 6) displays a similar plan to Parsons' Plan # 5 except for the fenestration which is only slightly different. The three-bay dwelling has a center entrance and flanking three-part windows with center sash of 6/1 lights. The second-story full width dormer has a single 6/1 on the end bays and a small paired 4/1 window unit over the center entrance. The sunporch is enclosed with 1/1 windows. The entrance porch consists of paired columns supporting a pediment with segmental arched opening in the pediment.

Two other dwellings which display the Dutch Colonial Style are 411 Main Street (Perley Leck, 1920, Map # 56-32) and 55 Bradstreet Road (Charles Downing, 1920, Map # 44-03, Photograph # 6). Each has a combination of architectural features which are reminiscent of Craftsman styles and late nineteenth century Shingle Style. In all likelihood these two houses display Parsons' Plan # 2. The sweeping gambrel roof with flared eaves has three dormers set into the roof with small projecting shed roof hoods.

The remaining five dwellings display Craftsman Style characteristics some of which are alluded to in other properties. Four are built from the same plan, known as Parsons' Plan # 7. On the west side of Bradstreet Road are 43 Bradstreet Road (Josephine Battle, 1920, Map # 43-19, Photograph # 9) and 49 Bradstreet Road (George Mowat, 1920, Map # 44-02,) a mirror image of each other. On the opposite or east side also displaying Plan # 7 as mirror images are 44 Bradstreet Road (William Woosman, 1920, Map # 43-17) and 50 Bradstreet Road (James Ewart, 1920, Map # 43-18). This reverse floor plan for adjacent properties provided more space and privacy on the living room side of the house where the projecting bay window faced a wide side yard and it placed the entrances porches next to each other for informal communication when sitting on the porches. Each of Plan # 7 is a two and one-half story shingled dwelling with slightly flared second story apron, three bays wide and two deep. Each has a projecting entrance porch of slightly more than one-half the width of the main facade extending from the main roof to form a shed roof porch on which rests a hipped roof paired window dormer. The main facade has a center entrance flanked by paired 8/8 sash and vertical siding within the porch which is supported by wide shingled squared columns and corner posts and has a cut balustrade of flat boards with diamond notches and slatted foundation screening. All are built on fieldstone foundations and each has one exterior corbelled chimney and one chimney just within the rear wall on the opposite side.

Of a different plan but displaying Craftsman characteristics in the irregular plan is 37 Bradstreet Road (Ernest Curran, 1922-23, Map # 43-20, Photograph # 5). The two-story hipped roof dwelling has a one and one-half story enclosed gable roof ell which projects from the northeast corner of the main block and has triple windows of 6/6 sash. The side hall entrance is screened by an enclosed hipped roof porch. Centered on the main block are paired 6/6 sash down and a shed roof dormer which breaks the eave line at the second story level. The chimney is centered and behind the ridge of the hip. The dwelling rests on a fieldstone foundation and is sheathed in wood shingles.

(continued)

United States Department of the Interior  
National Park ServiceNational Register of Historic Places  
Continuation SheetTavern Acres Historic District  
North Andover, (Essex County)  
MassachusettsSection number 7 Page 5

The house at 395 Main Street (Emmons, 1921, Map # 43-12) is a combination of Plan # 5 and Plan # 7 with mixed characteristics of the Colonial Revival and Craftsman Style houses. Similar to 43 Bradstreet Road, the hipped roof dwelling has an extended eave in front which forms a porch roof over the right half of the house on which is surmounted a hipped roof dormer with 4/4 sash. The front corners of the deep porch on a rubblestone foundation are supported by squared replaced columns. The tapered squared pilasters in a Colonial Revival style are retained as are the multi-light windows of 8/8 and 6/6 sash which are commonly found in Craftsman houses as well as Colonial Revival.

Non-Residential Properties

The Stevens Memorial Library (345 Main Street, 1907, Map # 43-07, Photograph 1 and 2) is the focal point of the district at the northern most point. It is around the Library that the rest of the district evolved. In spite of its elaboration, the building is unpretentious due to the open space and overall domestic scale. The red brick building with terra cotta and copper roof consists of the main 1907 block designed by Guy Lowell, flanking 1966 wings, and a 1994 rear addition which retains the contours of the rear elevation and nearly doubles the size of the Library.

The main block with a raised basement level is one story on the main facade and two on the Memorial Park or rear side which now is within the rear addition. The hipped roof of the main block is accented by a modillion block/bracketed cornice. On the main facade the center section with high parapet wall pierces the hipped roof eave. A large round turret top section rises from the center of the hipped roof and breaks out of the back wall so that the original facade which faced Memorial Park is curvilinear with flanking tall chimneys enframed by the hipped roof of the main block.

The main facade has a tripartite effect with a central entrance set off by a tall parapet gable which pierces the hipped roof and has flanking slightly projecting pilasters. In the gable peak of the parapet the brick tapestry breaks into a corbelled arched pattern with limestone tabs outlining the gable peak. This center section is flanked by single window bays with decorative limestone plaques having an Adamesque swag and outlined in patterned brick. The Italian Renaissance Style displayed in the Library is reminiscent of Renaissance churches of northern Italy with the large central entrance door set off by a marble surround of pilasters carrying the wide and elaborate entablature topped with the half round panel inset of coat of arms and the tapestry effect of the patterned brick. The main entrance is approached by broad granite steps which are framed by a stepped brick wall with limestone caps and topped by cast iron light standards.

The flanking 1966 wings are well integrated into the whole and due to the slight slope of the land they appear to be one story ells but have two stories with the raised basement level. These flanking slightly recessed wings are strictly rectilinear with subtle elaboration in the patterned brick walls and patterned brick stringcourses articulating the top of the raised basement level and first story level.

(continued)

United States Department of the Interior  
National Park ServiceNational Register of Historic Places  
Continuation SheetTavern Acres Historic District  
North Andover, (Essex County)  
MassachusettsSection number 7 Page 6

The new 1994 rear addition is more elaborate than the original rear elevation although it mirrors the former rear elevation in form, fenestration and materials including the terracotta and copper roof. The original rear contour has been repeated with the center rounded bay - a bank of long windows looking onto Memorial Park - and the flanking chimneys which have been repeated in flanking low towers reminiscent of mill building clock towers. The rounded bay facade originally projected beyond the chimneys which remain behind the low towers. Now the clock towers of the recent addition project slightly beyond the rounded bay of the center section. Squared hipped roof blocks project from the 1966 wings as part of the new rear addition. The 1994 rear addition retains the domestic scale of the 1907 library, uses similar materials to integrate the new construction into the 1907 building, and recalls the mill history of the Stevens family the benefactors of the Library and of the Tavern Acres subdivision.

Memorial Park (Main, Davis, Green, Bradstreet Road, 1922, Map # 43-08, Photograph #s 2 & 3), an Olmsted Brothers design, is a two and three-quarters acre flat grassed area retaining the impression of the path system on the perimeter weaving around the clusters of linden trees, sugar maples and several shrubs which appear on the Olmsted Plan # 66, such as rhododendron, lilacs and azaleas. Some hawthornes and crabapple also remain.

The Patriots Monument (Davis Street, 1922, Map # 912, Photograph #s 2 & 4) is located at the northern end of the Park opposite the Library. It is a granite monument of a center tablet with pediment and flanking rectangular blocks on a stepped base and having a singular acanthus wreath denoting the memorial purpose of the monument. The bronze plaque centered on the taller center section of the monument lists the names of North Andover veterans of the wars. Large yews surround the monument and although they are trimmed in rounded shapes are out of scale. According to the planting plans, the monument once was framed by American elm trees and flanked by rhododendrons. At the center of the Park is a tall flagpole encircled by lower yew shrubs which have been added by the local Department of Public Works and do not appear on the original list of plantings at Memorial Park.

Archaeological Description

While no prehistoric sites are currently recorded in the district it is possible that sites are present. Eleven prehistoric sites are located in the local area (within one mile). In general, however, the potential for locating significant prehistoric survivals is low because the locational characteristics of the property particularly its distance from water are not well suited for prehistoric sites. Most prehistoric sites in the North Andover locale are located within 300 meters (1,000 feet) of water, particularly along the Shawsheen and Merrimack Rivers and other related wetlands which surround the district region.

There is also a low potential for recovering historic archaeological remains within the district. In 1866-1868 the reportedly empty land in the district was purchased from several individual land owners

(continued)

United States Department of the Interior  
National Park ServiceNational Register of Historic Places  
Continuation SheetTavern Acres Historic District  
North Andover, (Essex County)  
MassachusettsSection number 7, 8 Page 7, 1

and had not been developed. All residential construction in the district and the library occurred during the 20th century and are still extant. The tavern after which the district received its name is not located with the bounds of the district.

(end)

**8. STATEMENT OF SIGNIFICANCE**

The Tavern Acres Historic District in North Andover is a small early twentieth century subdivision designed by Henry Hubbard of Olmsted Brothers. It retains its continuity of design as a neighborhood constructed for upper management level employees and small business owners. The district includes twenty dwellings of similar size, scale, and style all built from similar plans and in Revival styles. Also in the district is one institutional building which is the Italian Renaissance Stevens Memorial Library set off from the residences by Memorial Park also designed by Henry Hubbard. The district's period of significance extends from 1907 when the Stevens Memorial Library was constructed to 1924 when the Tavern Acres Land Company was dissolved and the dwellings included in the district were completed. Today the district retains its suburban residential subdivision characteristics. The Tavern Acres Historic District retains integrity of location, setting, design, materials, workmanship, feeling, and association and fulfills Criteria A and C of the National Register of Historic Places. It is significant at the local level.

North Andover was the political and religious center of the seventeenth century settlement of Andover, North Andover, and the east part of Lawrence. Originally called Cochichewick for the Lake and Brook within its bounds, the area was reserved by the General Court in 1634 for an inland plantation and the first settlement was established in 1645. Early settlers had been residents of the coastal towns of Ipswich and Newbury. North Andover separated from the original settlement as a separate parish - the North Parish - in 1709 although it was not incorporated as a town until 1855.

The early economy was farming with some grist and fulling mills along Cochichewick Brook during the seventeenth and early eighteenth centuries. The first center of the early settlement, an area which remained the town's focal point until the coming of the railroad in the mid 1800s was located at Old Center which is listed on the National Register of Historic Places as the North Andover Center Historic District.

The nineteenth century was marked by the early manufacturing of woolen cloth. The first textile mill, which was located on the Cochichewick Brook in 1802 eventually was taken over by the Sutton family. The second mill in North Andover was established by Nathaniel Stevens (1786-1865) in 1813 for the manufacture of broadcloth and flannel. This mill was the first to introduce American-made flannels into the market. With the growth of this industry and continued success of the mill, the Stevens family continued the tradition of being important benefactors of North Andover. Land for the

(continued)

Tavern Acres Historic District  
Name of Property

Essex County, MA  
County and State

**8. Statement of Significance**

**Applicable National Register Criteria**

(Mark "x" in one or more boxes for the criteria qualifying the property for National Register listing.)

- A** Property is associated with events that have made a significant contribution to the broad patterns of our history.
- B** Property is associated with the lives of persons significant in our past.
- C** Property embodies the distinctive characteristics of a type, period, or method of construction or represents the work of a master, or possesses high artistic values, or represents a significant and distinguishable entity whose components lack individual distinction.
- D** Property has yielded, or is likely to yield, information important in prehistory or history.

**Criteria Considerations**

(Mark "x" in all the boxes that apply.)

Property is:

- A** owned by religious institution or used for religious purposes.
- B** removed from its original location.
- C** a birthplace or grave.
- D** a cemetery.
- E** a reconstructed building, object, or structure.
- F** a commemorative property.
- G** less than 50 years of age or achieved significance within the past 50 years.

**Narrative Statement of Significance**

(Explain the significance of the property on one or more continuation sheets.)

**9. Major Bibliographical References**

(Cite the books, articles, and other sources used in preparing this form on one or more continuation sheets.)

**Previous documentation on file (NPS):**

- preliminary determination of individual listing (36 CFR 67) has been requested
- previously listed in the National Register
- previously determined eligible by the National Register
- designated a National Historic Landmark
- recorded by Historic American Buildings Survey # \_\_\_\_\_
- recorded by Historic American Engineering Record # \_\_\_\_\_

**Areas of Significance**

(Enter categories from instructions)

ARCHITECTURE

COMMUNITY PLANNING AND DEVELOPMENT

LANDSCAPE ARCHITECTURE

**Period of Significance**

1907 - 1924

**Significant Dates**

1907, 1920

**Significant Person**

(Complete if Criterion B is marked above)

N/A

**Cultural Affiliation**

N/A

**Architect/Builder**

N/A

**Primary location of additional data:**

- State Historic Preservation Office
- Other State agency
- Federal agency
- Local government
- University
- Other

Name of repository:

North Andover Historical Society

Stevens Memorial Library

Tavern Acres Historic District  
Name of Property

Essex County, MA  
County and State

**10. Geographical Data**

**Acreage of Property** approximately nine acres

**UTM References**

(Place additional UTM references on a continuation sheet)

1. Zone Easting Northing

3. Zone Easting Northing

2. Zone Easting Northing

4. Zone Easting Northing

X See continuation sheet

**Verbal Boundary Description**

(Describe the boundaries of the property on a continuation sheet.)

**Boundary Justification**

(Explain why the boundaries were selected on a continuation sheet.)

**11. Form Prepared By**

Gretchen G. Schuler, Consultant, Phila Slade, North Andover Improvement Society  
name/title with Betsy Friedberg, National Register Director, MHC

organization Massachusetts Historical Commission date August 1995

street & number 220 Morrissey Boulevard telephone 617-727-8470

city or town Wayland state MA zip code 01778

**Additional Documentation**

**Submit the following items with the completed form:**

**Continuation Sheets**

**Maps**

A **USGS map** (7.5 or 15 minute series) indicating the property's location.

A **sketch map** for historic districts and properties having large acreage or numerous resources.

**Photographs**

Representative **black and white photographs** of the property.

**Additional items** (Check with the SHPO or FPO for any additional items)

**Property Owner**

(Complete this item at the request of the SHPO or FPO.)

name \_\_\_\_\_

street & number \_\_\_\_\_ telephone \_\_\_\_\_

city or town \_\_\_\_\_ state \_\_\_\_\_ zip code \_\_\_\_\_

**Paperwork Reduction Act Statement:** This information is being collected for applications to the National Register of Historic Places to nominate properties for listing or determine eligibility for listing, to list properties, and to amend existing listings. Response to this request is required to obtain a benefit in accordance with the National Historic Preservation Act, as amended (16 U.S.C. 470 et seq.).

**Estimated Burden Statement:** Public reporting burden for this form is estimated to average 18.1 hours per response including the time for reviewing instructions, gathering and maintaining data, and completing and reviewing the form. Direct comments regarding this burden estimate or any aspect of this form to the Chief, Administrative Services Division, National Park Service, P.O. Box 37127, Washington, DC 20013-7127; and the Office of Management and Budget, Paperwork Reductions Project (1024-0018), Washington, DC 20503.

**United States Department of the Interior  
National Park Service****National Register of Historic Places  
Continuation Sheet****Tavern Acres Historic District  
North Andover, (Essex County)  
Massachusetts**Section number 8 Page 2

first burying ground had been given by John Stevens who was among the first settlers of North Andover and Nathaniel Stevens father Jonathan, a direct descendent of John Stevens had given the land for Franklin Academy in 1799.

The third substantial industry in North Andover was the 1836 machine shop built on Isaac Osgood's mill privilege on the Cochichewick. From 1851 this shop grew and became the well known Machine Shop Village, an important industrial center with surrounding workers' housing and the first train depot. The Village is listed on the National Register of Historic Places. This shift in activity away from Old Center to the industrial areas preserved Old Center's character as the early parish center with well established residences of prosperous families including the Stevens.

Throughout the nineteenth century the Stevens family mills dominated the industry of the area. Nathaniel Stevens had five sons all of whom were involved in manufacturing. The Stevens mills became the well established and important textile company known as M.T. Stevens Mills, which in 1946 was reorganized as part of the J. P. Stevens Company. Members of the Stevens family acquired much of the surrounding land which subsequently was developed.

Moses Tyler Stevens (1825-1907), one of Nathaniel's five sons and owner of the largest private woolen establishment in America, had purchased open land from several owners after the Civil War in 1866-1868 near the location of an historic tavern, no longer extant, the site of which is today's 1967 Police Station at Main and Osgood Streets, outside the boundaries of the Tavern Acres District. The tavern had been replaced by the Johnson High School in 1867 about the time Stevens was accumulating the land which would become known in town records as the "Tavern Lot".

The suburbanization of this area northwest of the Old Center Common area and the mills at Machine Shop Village occurred with the advent of the railroad in 1853 and extended out Main Street on which there were large late nineteenth century dwellings and the 1882 Episcopal Church prior to the development of the Stevens' land.

In 1904 the Honorable Moses Tyler Stevens offered a site and funds to construct a building suitable for a library and maintenance of historical records. The care and management would be in the hands of a seven member Board of Trustees including two of his sons, Nathaniel and Samuel Dale Stevens. The terms stated that the Town was to appropriate no less than \$1,200 per year to maintain the Library and if the Town defaulted the building would revert back to Stevens' heirs. At the same time plans were developed for a firehouse, school and playing fields on adjacent land which would be donated by the Stevens family. However the Town was unable to appropriate funds for the construction of the other municipal structures thus those plans were abandoned. The Library was planned for the grassy knoll at the northern end of the "Tavern Lot". It was designed by Guy Lowell, architect for many well known buildings in the Boston area including Boston's Museum of Fine Arts, Simmons College in Boston, and Harvard's Emerson Hall in Cambridge. Moses Stevens died as the Library was being constructed; thus it was called the Stevens Memorial Library in his memory.

(continued)

United States Department of the Interior  
National Park ServiceNational Register of Historic Places  
Continuation SheetTavern Acres Historic District  
North Andover, (Essex County)  
MassachusettsSection number 8 Page 3

Moses Stevens' sons, Moses T. Stevens, Jr. (1871-1948), Nathaniel Stevens (1857-1946), and Samuel Dale Stevens (1859-1922) inherited the surrounding land and in 1920 decided to develop the area with a park which was to be a focus for the neighborhood and town. The context at the time included scattered late nineteenth century dwellings and the 1882 Episcopal Church on Main Street, the 1907 Library and Machine Shop Village to the north. With the common use of the automobile came the further suburbanization of the thriving mill towns and surrounding communities.

The Tavern Land Company was established to develop the twenty-acre subdivision and the Olmsted Brothers Landscape Architects were hired to draw up the plan. Henry Vincent Hubbard (1875-1947), a partner in the firm, and professor of landscape architecture at Harvard, undertook the laying out of streets and house lots and the design of the two and three-quarter acre Memorial Park at the north end of the property adjacent to the 1907 Library which was a focal point at the northern tip of the land known as the "Tavern Lot".

The original subdivision, which was laid out by Hubbard of the Olmsted Brothers, included twenty acres bounded by Main, Green, Parker Streets and Tavern Road. However, the Tavern Land Company, incorporated to develop this land, proceeded with only twenty residential properties and the Park on approximately nine acres before its dissolution in December 1923 - January 1924. The rest of the lots were developed and sold in the 1930s to 1950s, thus the National Register district only includes those properties developed by the Tavern Land Company, the Park which was designed and planted according to Olmsted Brothers plans, and the Library, designed by Guy Lowell, around which the subdivision was planned. Thus the district includes nine of the original twenty acre subdivision laid out by Hubbard of Olmsted Brothers.

Landscape architect Henry V. Hubbard had been educated at Harvard College and Massachusetts Institute of Technology. He then studied under Frederick Law Olmsted, Jr., at Harvard Graduate School receiving degrees in 1900 and 1901. Hubbard joined the Olmsted Firm in 1906 for five years after which he was a partner at Pray, Hubbard and White. In 1920 Hubbard rejoined the Olmsted Brothers in time to take on the Tavern Land Company project. Hubbard's outstanding contributions were in the form of teaching and writing. In 1910 Hubbard, Charles Downing Lay, and Robert Wheelwright started the American Society of Landscape Architect's journal, Landscape Architecture. In 1917 he and Theodora Kimball (who later became his wife) wrote the definitive text in landscape architecture, An Introduction to the Study of Landscape Design.

While the plans for laying out of the streets and house lots were accepted immediately, plans for the park were criticized and discussed for nearly two years, according to correspondence between Samuel Dale Stevens and Hubbard. Green Street extended southwest from the Library bordering the park land. Bradstreet Road and Park Way had a curvilinear form which was consistent with the work of the Olmsted Brothers. The lots were consistently laid out at approximately 8,500 square feet with the exception of 15 and 27 Bradstreet Road which were one and one-half and two and one-half times the

(continued)

United States Department of the Interior  
National Park ServiceNational Register of Historic Places  
Continuation SheetTavern Acres Historic District  
North Andover, (Essex County)  
MassachusettsSection number 8 Page 4

size of most other lots. Although the correspondence does not reflect thoughts on street names, it is interesting to note that the use of the name Bradstreet is reminiscent of important North Andover persons, Ann Bradstreet (1613?-1672), poetess, and her husband the Honorable Simon Bradstreet (1603-1697) who was governor of Massachusetts Bay from 1679 to 1686 and from 1692 until his death. The Stevens Memorial Library, which is included in this district, owns the only known extant manuscript of Ann Bradstreet's poems, however, it is held at Harvard University due to its rare quality and need for special archival treatment impossible at the Town Library.

House plans were developed by Charles R. Wait of E. M. Parsons & Company, an architectural firm of Boston. Wait had worked for Olmsted Brothers Landscape Architects before joining Ernest May Parsons, thus, in all likelihood, he was chosen by Hubbard to work on the development of the dwellings for the Tavern Land Company. There were nine Parsons' Plans from which purchasers could choose with the most popular being Plans 5 and 7 for the Dutch Colonial Revival and the Craftsman Style dwellings. Many of the houses were constructed by Frank Buttrick a local builder who in 1924 owned three of the dwellings at the time of dissolution of the Tavern land Company.

Lots were sold to individuals with restrictive agreements about the use of the lot and the types of improvements. The agreement between the Tavern Land Company and Arthur Emmons, who purchased Lot 3 in Section 7 (15 Bradstreet Road) of the Subdivision Plan, is a typical purchase and sale agreement for lots at Tavern Acres. It stated that the dwelling could be for one family only and not cost less than \$6,500 above the foundation. The only permitted outbuildings were a garage, a conservatory, a decorative structure, or a building for "minor accessories to housekeeping". The agreement also stated that no animals other than usual family pets could be kept. The layout of buildings on each lot was prescribed by the Tavern Land Company requiring a twenty-five foot front yard set-back, ten foot side and rear set-back and seventy-five foot set-back from the street line for any of the allowed outbuildings. The restrictions were in force on those lots sold by the Tavern Land Company for fifty years.

Parsons Plans for houses in Tavern Acres varied in detail but had similarities in overall layout, size and scale of the house. They cost between \$6,500 and \$8,000. Records indicate that most were built with pebble-dash stucco siding which has been removed and replaced with wood shingles in all cases except two garages. At 14 Park Way and 38 Bradstreet Road the garages retain the stucco facades and the porch columns at 64 Green Street, reminiscent of the original appearance of many of the houses and garages.

Common to most of the plans are a three-bay main facade with a centered entrance, sometimes part of a projecting porch such as 43 Bradstreet Road so that the symmetry of a center entrance is altered, an interior and an exterior chimney, paired or grouped windows, and side facades which are two bays wide. Changes in designs include roof shapes which are hipped, gambrel as in Dutch Colonial, and gabled. Many properties have or had exposed rafter ends under the wide rake of the eaves. Many of

(continued)

United States Department of the Interior  
National Park ServiceNational Register of Historic Places  
Continuation SheetTavern Acres Historic District  
North Andover, (Essex County)  
MassachusettsSection number 8 Page 5

the garages retain the rafter ends with hipped or gabled roofs. Although all the houses are two or two and one-half stories several of the Craftsman Style properties are reminiscent of the Bungalow Style with wide short shingled porch columns, raking eaves with bracketed rafter ends, and dormers or projecting porch roofs. The many Revival characteristics serve to unify the district and maintain evidence of the planned subdivision.

The planning of the Park as an integral part of the subdivision and as a focal point setting off the Stevens Memorial Library from the residential area took over two years. Henry Hubbard, landscape architect, considered the view of the park from the houses as well as from the Library with its two-story reading rooms at the rear on an axis with the center of the Park. The Park was designed for passive recreation with curvilinear paths and clustered plantings around the perimeter to create some privacy but not entirely shut off to the surrounding residences. Hubbard's plan proposed to locate the War Memorial at the southern end of the Park to open the view of the Park from the Library. The Committee of six, including James Ewart, who lived at 50 Bradstreet Road and was treasurer of the Land Company, and Nathaniel Stevens, one of the principals of the Land Company, rejected Hubbard's proposal and instead placed the Memorial opposite Davis Street at the rear of the Library which made it accessible to visitors of the Library. The Committee had investigated what other towns did to commemorate War veterans and decided upon a "suitable tablet to be erected in the vicinity of the Stevens Library." There were 340 veterans from North Andover who had died in World War I.

The correspondence between members of the Stevens family and Hubbard of the Olmsted Brothers indicates the the Tavern Acres Land Company was established to develop this area to provide housing for upper level management and others who could afford to purchase homes up to \$10,000. Many of the first owners were associated with the mills in Lawrence, including Carl Vetter who owned one of the most distinguished properties at 27 Bradstreet Road and was general manager of the Stevens Mills, James McDonald (2 Park Way) and William Woosman (44 Bradstreet Road) both of whom were mill superintendents in Lawrence, and C. Ernest Curran (37 Bradstreet Road) who was head worsted designer at a wool mill in Lawrence. Other first owners included James Ewart (50 Bradstreet Road) who was Treasurer of the Tavern Land Company and a real estate and insurance salesman, Arthur Emmons (15 Bradstreet) owner of Emmons Loom and Harness Company, and Dr. J.W. Fenton (59 Bradstreet Road) a local dentist.

The twenty dwellings included in the district were built and sold by the Tavern Land Company before it voted to fold in December of 1923 and was terminated formally in January 1924. The rest of the lots which were part of the Tavern Acres plan were sold to investors and not improved until the 1930s and later, thus the development of the district clearly is separated by events and time which have an impact on design including size, scale and details. The twenty houses, park and library are related visually and historically.

(continued)

United States Department of the Interior  
National Park ServiceNational Register of Historic Places  
Continuation SheetSection number 8, 9 Page 6, 1Tavern Acres Historic District  
North Andover, (Essex County)  
Massachusetts

Today, the Tavern Acres Historic District retains its planned form representing a 1920s subdivision with its Park and Library as focal points. Properties in the district are well maintained. The recent expansion of the Stevens Memorial Library is consistent with the building and its relationship to the District. The Park is similar in size and its skeletal layout to the 1922 Olmsted Brothers Plan. The North Andover Improvement Society anticipates restoration of the Park according to the Plan and Planting List. It is the only North Andover park displaying a design of the Olmsted firm, thus its restoration will be an important feature of the North Andover. The planting plan consists of twenty-five species of plant material most of which are relatively common with the exception of the American elm. The Society plans to pursue the restoration of the Park following listing on the National Register of Historic Places.

(end)

## 9. MAJOR BIBLIOGRAPHICAL REFERENCES

Published Materials

Bailey, Sarah Loring. Historical Sketches of Andover. Boston, MA: Houghton Mifflin, 1880.

Hubbard, Henry Vincent and Theodora Kimball. An Introduction to Landscape Design. New York: MacMillan Company, 1929.

Hurd, D. Hamilton ed. History of Essex County, Massachusetts. Volume II (pp. 1657-1694) Philadelphia: J.W. Lewis & Co., 1889.

Roper, Stephen. A Good In-Land Town and of a Good Prospect. North Andover Historical Society, forthcoming.

Other

Hornbeck, Peter and Associates. 3 Johnson Street, North Andover, MA.

North Andover Historical Society, Architectural files.

Olmsted Brothers - Henry Vincent Hubbard: Tavern Acres Land Company Correspondence and Plan #66 with Planting List: Library of Congress and copies at North Andover Historical Society.

Stevens Family Papers: Museum of American Textile History Archives.

(end)

**United States Department of the Interior  
National Park Service**

**National Register of Historic Places  
Continuation Sheet**

**Tavern Acres Historic District  
North Andover, (Essex County)  
Massachusetts**

**Section number** 10 **Page** 1

**10. GEOGRAPHICAL DATA**

UTM REFERENCES

Point	Zone	Easting	Northing
A	19	325760	4729140
B	19	325750	4728880
C	19	325950	4728770
D	19	325980	4728790
E	19	325950	4728840
F	19	326000	4728890

VERBAL BOUNDARY DESCRIPTION

Boundaries for the Tavern Acres Historic District are included on Assessor's Maps 43, 44, and 56. Beginning at the northern most tip of the district the western boundary follows the property boundary of the Library parcel (Lot 43-07), crosses Davis Street, follows the property boundary of Memorial Park (Lot 43-08, crosses Bradstreet Road and follows the western lot line of 64 Green Street (Lot 43-24) where the district boundary turns easterly and follows the rear lot lines of properties on the southwest side of Bradstreet to Tavern Road. At Tavern Road the district boundary turns in a northeasterly direction to follow the southern boundary of 59 Bradstreet Road (Lot 44-04) and northwesterly to follow the eastern lot line of the same parcel, whereupon the district boundary turns east crossing Bradstreet Road to the southern lot line of 54 Bradstreet Road (Lot 44-01). The district boundary runs along the rear lot line of 54 Bradstreet Road, approximately 33 feet, to the intersection of the southern or side line of 411 Main Street (Lot 56-32) where the district boundary turns east to follow the southern lot line of 411 Main Street to Main Street. The district boundary then turns north and follows Main Street north, crossing Park Way and Davis Streets to the beginning point, the northern tip of the Library lot at Main and Green Streets.

BOUNDARY JUSTIFICATION

The Tavern Acres Historic District boundaries include that part of the Tavern Acres Subdivision which was designed and built or under construction prior to the dissolution of the Tavern Land Company in January 1924. All other lots which were part of the subdivision laid out and designed by Henry Vincent Hubbard of the Olmsted Brothers Landscape Architects were sold as empty lots after 1924 and were not developed until the late 1930s through the 1950s. The district includes the 1907 Stevens Memorial Library and that part of the Tavern Acres subdivision which was planned around the Library with a park, subdivision roads, and house lots on which houses were constructed by 1923-1924 and most designed by Charles Wait of E.M. Parsons and Company.

(end)

**Tavern Acres Historic District  
North Andover, (Essex County), Massachusetts  
District Data Sheet**

<u>ADDRESS</u>	<u>MHC #</u>	<u>MAP #</u>	<u>HISTORIC NAME</u>	<u>DATE</u>	<u>STYLE</u>	<u>STATUS</u>	<u>TYPE</u>
<b>Bradstreet Road</b>							
9 Bradstreet Rd. garage	322	43-23	Hammond	1920	Dutch Colonial	C	B
				1920	Colonial Revival	C	B
15 Bradstreet Rd. garage	323	43-22	Arthur Emmons	1920	Dutch Colonial	C	B
				1920	Colonial Revival	C	B
27 Bradstreet Rd. garage	324	43-21	Carl Vetter	1920	Colonial Revival	C	B
				1920	Colonial Revival	C	B
28 Bradstreet Rd. garage	325	43-15	Bradbury	1920	Colonial Revival	C	B
				1920	Colonial Revival	C	B
37 Bradstreet Rd. garage	326	43-20	Ernest Curran	1922-23	Craftsman	C	B
				1929	Craftsman	NC	B
38 Bradstreet Rd. garage	327	43-16	Storey	1920-22	Colonial Revival	C	B
				1920	Colonial Revival	C	B
43 Bradstreet Rd. garage	328	43-19	Josephine Battles unknown	1920	Craftsman	C	B
				ca. 1940	Colonial Revival	NC	B
44 Bradstreet Rd. garage	329	43-17	William Woosman	1920	Craftsman	C	B
				1920	Colonial Revival	C	B
49 Bradstreet Rd. garage	330	44-02	George Mowat	1920	Craftsman	C	B
				1920	Bungaloid	C	B
50 Bradstreet Rd. garage	331	43-18	James Ewart	1920-21	Craftsman	C	B
				1920	Craftsman	C	B

**Tavern Acres Historic District  
North Andover, (Essex County), Massachusetts  
District Data Sheet**

<b>ADDRESS</b>	<b>MHC #</b>	<b>MAP #</b>	<b>HISTORIC NAME</b>	<b>DATE</b>	<b>STYLE</b>	<b>STATUS</b>	<b>TYPE</b>
54 Bradstreet Rd. garage	332	44-01	Herman Cass	1923-24 1923-24	Dutch Colonial Colonial Revival	C C	B B
55 Bradstreet Rd. garage	333	44-03	Charles Downing unknown	1920 ca. 1940s	Dutch Colonial Colonial Revival	C NC	B B
59 Bradstreet Rd. garage	334	44-04	J.W. Fenton unknown	1923 ca. 1940	Dutch Colonial Colonial Revival	C NC	B B
<b>Green Street</b>							
64 Green St. garage	321	43-24	Frank Lena	1920 1920	Colonial Revival Colonial Revival	C C	B B
<b>Main Street</b>							
Main at Davis At.	911	43-08	Memorial Park	1922	Olmsted LandscapeCSi		
Main at Davis St.	912	912	Patriots' Monument	1922	Memorial	C	O
Main at Davis St.	911	911A	Memorial Park	1922	Olmsted Design	C	St
345 Main St.	315	43-07	Stevens Mem. Library	1907	Renaissance Rev.	C	B
395 Main St.	317	43-12	Emmons	1921	eclectic	C	B
399 Main St. garage	318	43-13	Robert Disney	1920 1920	Dutch Colonial Colonial Revival	C C	B B
405 Main St. garage	319	56-33	Wallace Coats	1920 1920	Dutch Colonial Colonial Revival	C C	B B
411 Main St.	320	56-32	Perley Leck	1920-21	Dutch Colonial	C	B

**Tavern Acres Historic District  
North Andover, (Essex County), Massachusetts  
District Data Sheet**

<u>ADDRESS</u>	<u>MHC #</u>	<u>MAP #</u>	<u>HISTORIC NAME</u>	<u>DATE</u>	<u>STYLE</u>	<u>STATUS</u>	<u>TYPE</u>
<b>Park Way</b>							
2 Park Way garage	316	43-11	MacDonald	1920	Colonial Revival	C	B
				1920	CR/Craftsman	C	B
14 Park Way garage	335	43-14	Fred Bedell	1920	Colonial Revival	C	B
				1920	Colonial Revival	C	B

UNITED STATES DEPARTMENT OF THE INTERIOR  
NATIONAL PARK SERVICE

NATIONAL REGISTER OF HISTORIC PLACES  
EVALUATION/RETURN SHEET

REQUESTED ACTION: NOMINATION

PROPERTY NAME: Tavern Acres Historic District

MULTIPLE NAME:

STATE & COUNTY: MASSACHUSETTS, Essex

DATE RECEIVED: 8/28/95 DATE OF PENDING LIST: 9/13/95  
DATE OF 16TH DAY: 9/29/95 DATE OF 45TH DAY: 10/12/95  
DATE OF WEEKLY LIST:

REFERENCE NUMBER: 95001134

NOMINATOR: STATE

REASONS FOR REVIEW:

APPEAL: N DATA PROBLEM: N LANDSCAPE: N LESS THAN 50 YEARS: N  
OTHER: N PDIL: N PERIOD: N PROGRAM UNAPPROVED: N  
REQUEST: N SAMPLE: N SLR DRAFT: N NATIONAL: N

COMMENT WAIVER: N

ACCEPT  RETURN  REJECT 9/29/95 DATE

ABSTRACT/SUMMARY COMMENTS:

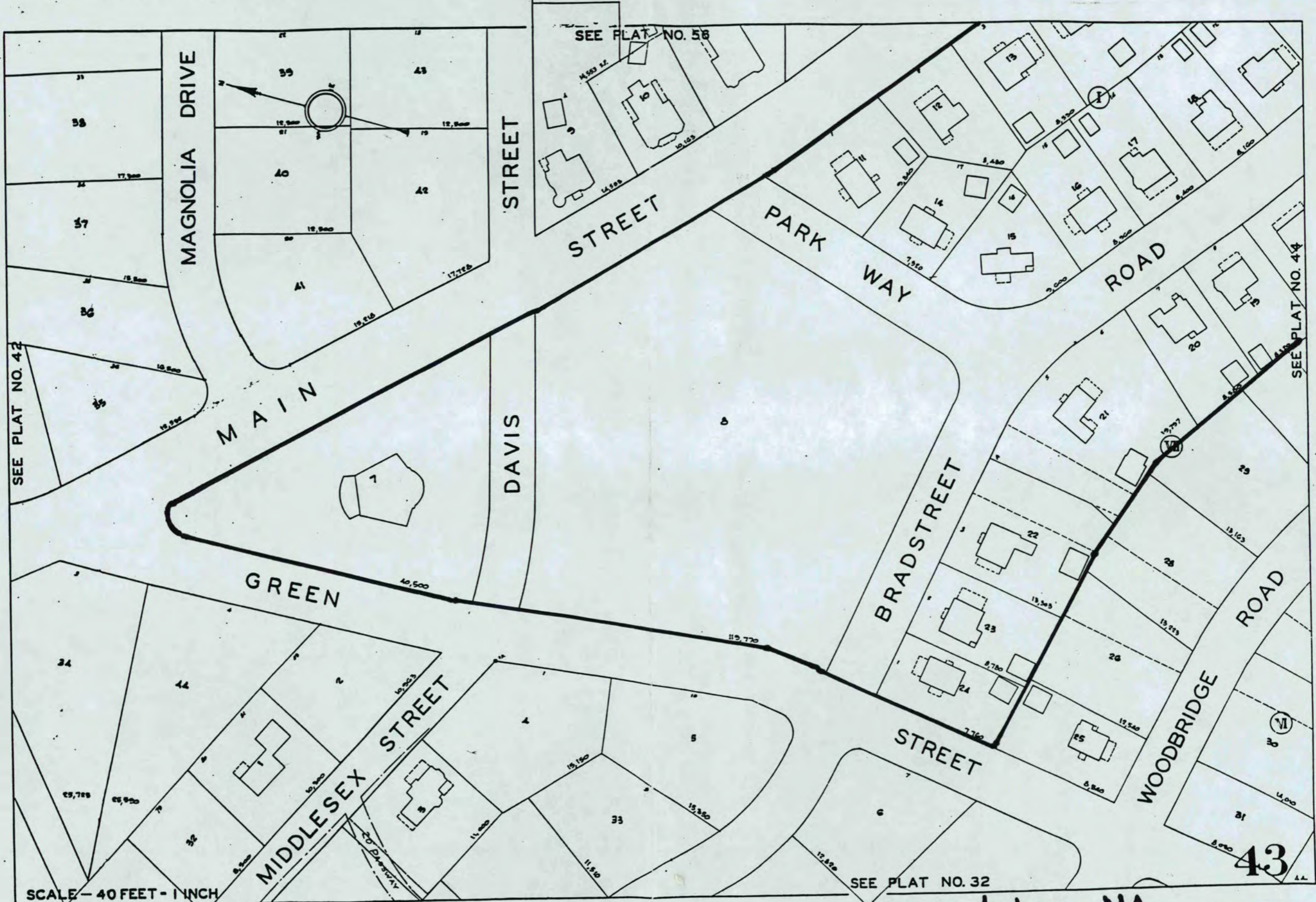
Entered in the  
National Register

RECOM./CRITERIA \_\_\_\_\_

REVIEWER \_\_\_\_\_ DISCIPLINE \_\_\_\_\_

TELEPHONE \_\_\_\_\_ DATE \_\_\_\_\_

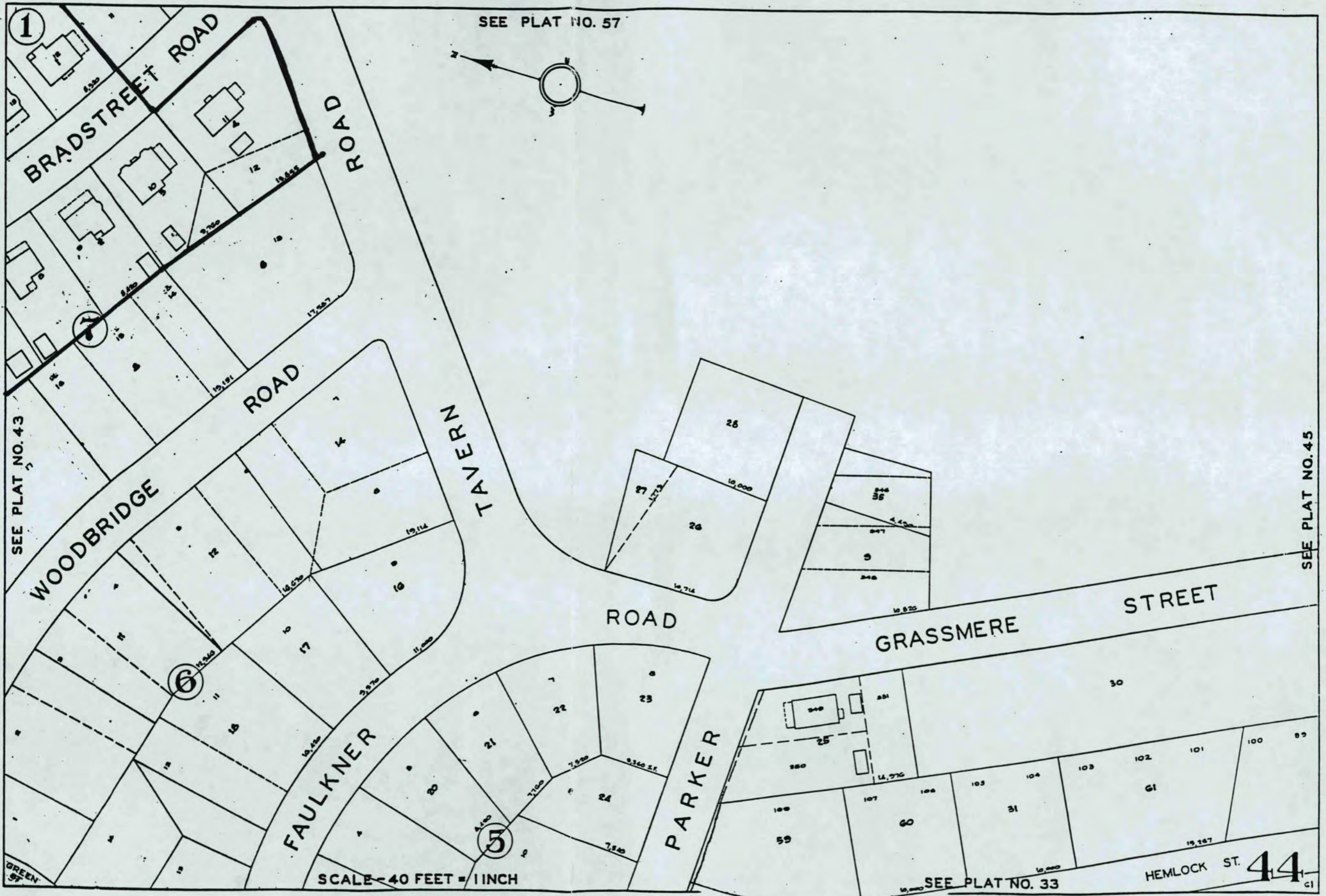
DOCUMENTATION see attached comments Y/N see attached SLR Y/N



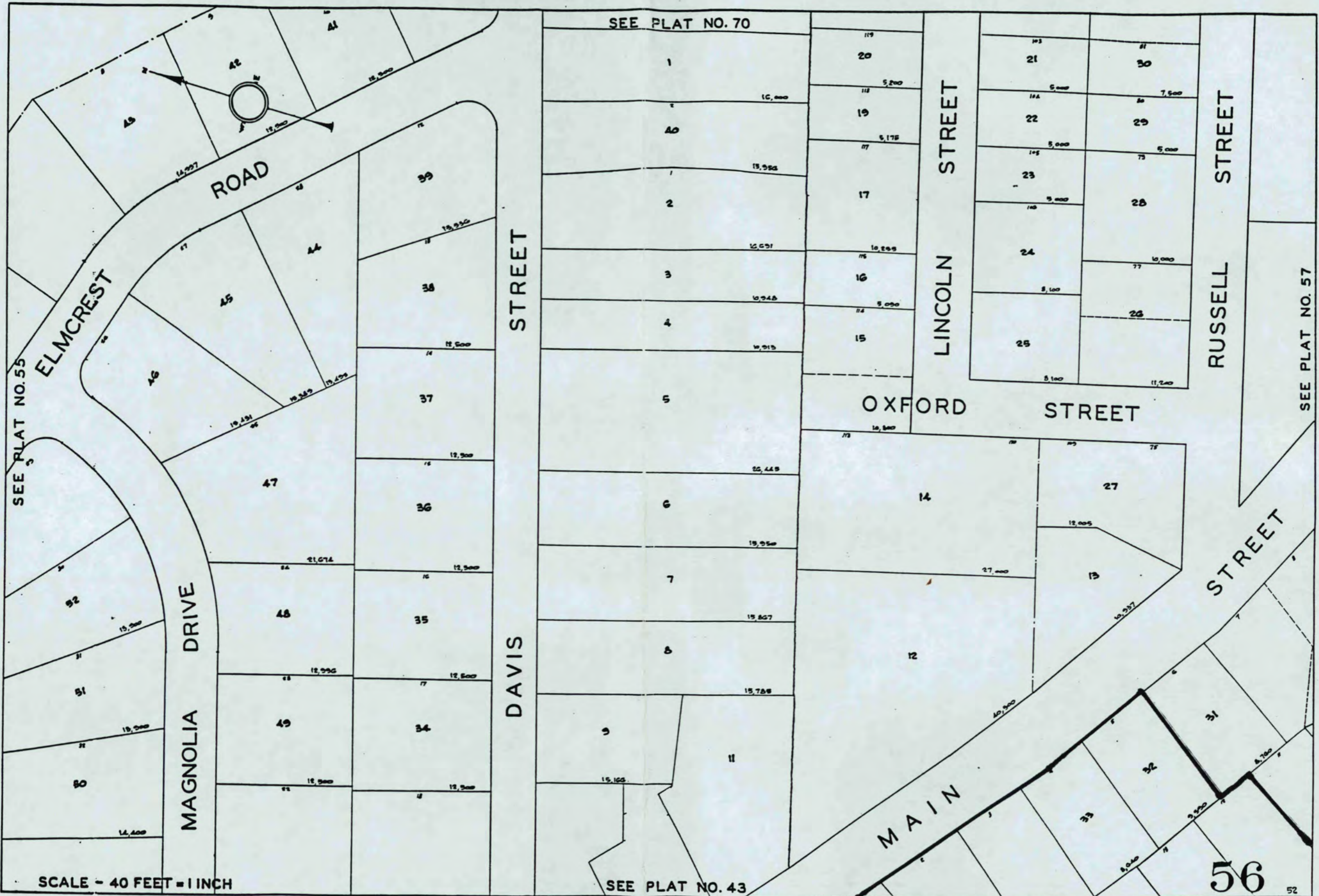
SCALE - 40 FEET - 1 INCH

SEE PLAT NO. 32

North Andover, MA  
Tavern Acres Historic District



North Andover, MA  
Tavern Acres Historic District



SEE PLAT NO. 55

ELMCREST ROAD

MAGNOLIA DRIVE

DAVIS STREET

LINCOLN STREET

RUSSELL STREET

OXFORD STREET

STREET

MAIN

SCALE - 40 FEET = 1 INCH

North Andover, MA  
Tavern Acres Historic District



TAVERN ACRES

STEVENS MEMORIAL LIBRARY

345 MAIN STREET (FORM 315)

NORTH ANDOVER MA 01845

PHOTOGRAPHER: BARRY RHYS WINTER 1991

PHOTOGRAPH # 1 of ~~20~~ 11

FACADE OF STEVENS MEMORIAL LIBRARY (LOOKING SOUTH)



TAVERN ACRES

MEMORIAL PARK

NORTH ANDOVER MA 01845

PHOTOGRAPHER: BARRY RHYS WINTER 1991

NEG # 7 ROLL 3 AT N.A. HISTORICAL SOCIETY

PHOTOGRAPH # 2 OF 11

WITHIN PARK NEAR CORNER OF BRAD STREET AT ROAD AND

VIEW FROM <sup>PARK WAY</sup> ACROSS PARK (N.W.)  
Toward back of monuments and back of library FORMS 915, 911, 912



TAVERN ACRES

MEMORIAL PARK

NORTH ANDOVER, MA 01845

PHOTOGRAPHER: BARRY RHYS WINTER 1991

NEG # 21 2011 3 AT N.A. HISTORICAL SOCIETY

PHOTOGRAPH # 3 OF ~~10~~ 11

VIEW FROM PARK WAY IN FRONT OF 614 PARK WAY FORM 911  
LOOKING N-W.



TAVERN ACRES

MEMORIAL PARK, ~~ON~~ DAVIS STREET +  
NORTH ANDOVER MA 01845

PHOTOGRAPHER: BARRY RHYS WINTER 1991  
NESS AT N.A. HISTORICAL SOCIETY

NEG # 10, R0112

PHOTOGRAPH # 4 of ~~20~~ 11  
PATRIOTS (W.W.I) MONUMENT (LOOKING SOUTH FROM DAVIS STREET) 315, 911  
FORM, 912



TAVERN ACRES  
27 BRADSTREET ROAD  
NORTH ANDOVER MA 01845  
PHOTOGRAPHER: BARRY RHYS WINTER 1991  
NEG # 8 ROLL 3 AT N.A. HISTORICAL SOCIETY  
PHOTOGRAPH # 5 of ~~EB~~ 11

STREETSCAPE LOOKING S-E

PARK ON LEFT

27 BRADSTREET ROAD IN FOREGROUND (FORM 324)

37 .. .. BEYOND (FORM 326)



TAUBERN ACRES

59 BRADSTREET ROAD  
NORTH ANDOVER, MA 01845

BARRY RHYS, PHOTOGRAPHER WINTER 1991  
NEG: 18, ROLL 3 AT N.A. HIST. SOCIETY

PHOTOGRAPH # 6 OF ~~11~~ 11  
VIEW OF TAUBERN ACRES LOOKING N/W - STREETSCAPE

59 BRADSTREET RD IN FOREGROUND

55 " " BEYOND



TAVEN ACRES  
STREETSCAPE  
NORTH ANDOVER MA 01845

PHOTOGRAPHER: BARRY RHYS WINTER 1992

PHOTOGRAPH # 7 OF ~~THE~~ <sup>11</sup> AT N.A. HISTORICAL SOCIETY  
STREETSCAPE LOOKING N-N-E ALONG PARK WAY TOWARD MAIN STREET  
#14 PARK WAY ON RIGHT



TAVERN ACRES  
405 MAIN STREET  
NORTH ANDOVER MA 01845

PHOTOGRAPHER: BARRY RHYS WINTER 1991

NEG # 18, roll 3

ANA HISTORICAL SOCIETY

PHOTOGRAPH # 8 OF ~~20~~ 11



TAVERN ACRES

43 BRADSTREET ROAD  
NORTH ANDOVER MA 01845

PHOTOGRAPHER: BARRY RHYS WINTER 1991  
NEG # 5 ROLL 1 OF NORTH ANDOVER HISTORICAL SOCIETY

PHOTO # 9 of <sup>11</sup> ~~10~~ (FORM 328)

FRONT AND GARAGE of #43 BRADST. RD LOOKING ~~to~~ S-W



TAVERN ACRES  
14 PARK WAY  
NORTH ANDOVER MA 01845

PHOTOGRAPHER: BARRY RHYE WINTER 1991  
NEG # 10 ROLL 3 AT NA HISTORICAL SOCIETY

PHOTOGRAPH # 10 of ~~11~~ 11



TAVERN ACRES HISTORIC DISTRICT  
NORTH ANDOVER (ESSEX COUNTY) MASSACHUSETTS  
STEVENS MEMORIAL LIBRARY  
345 MAIN STREET

PHOTO : 1994

NORTH ANDOVER IMPROVEMENT SOCIETY

DAVIS STREET ELEVATION — REAR ADDITION TO LIBRARY — LOOKING  
NORTH

PHOTO 11 OF 11

TOWN ACRES NORTH ANDOVER

B 325750/4728880

A 325760/4729140

E 325950/4728840

F 326000/4728890

42071-F1-TM-025

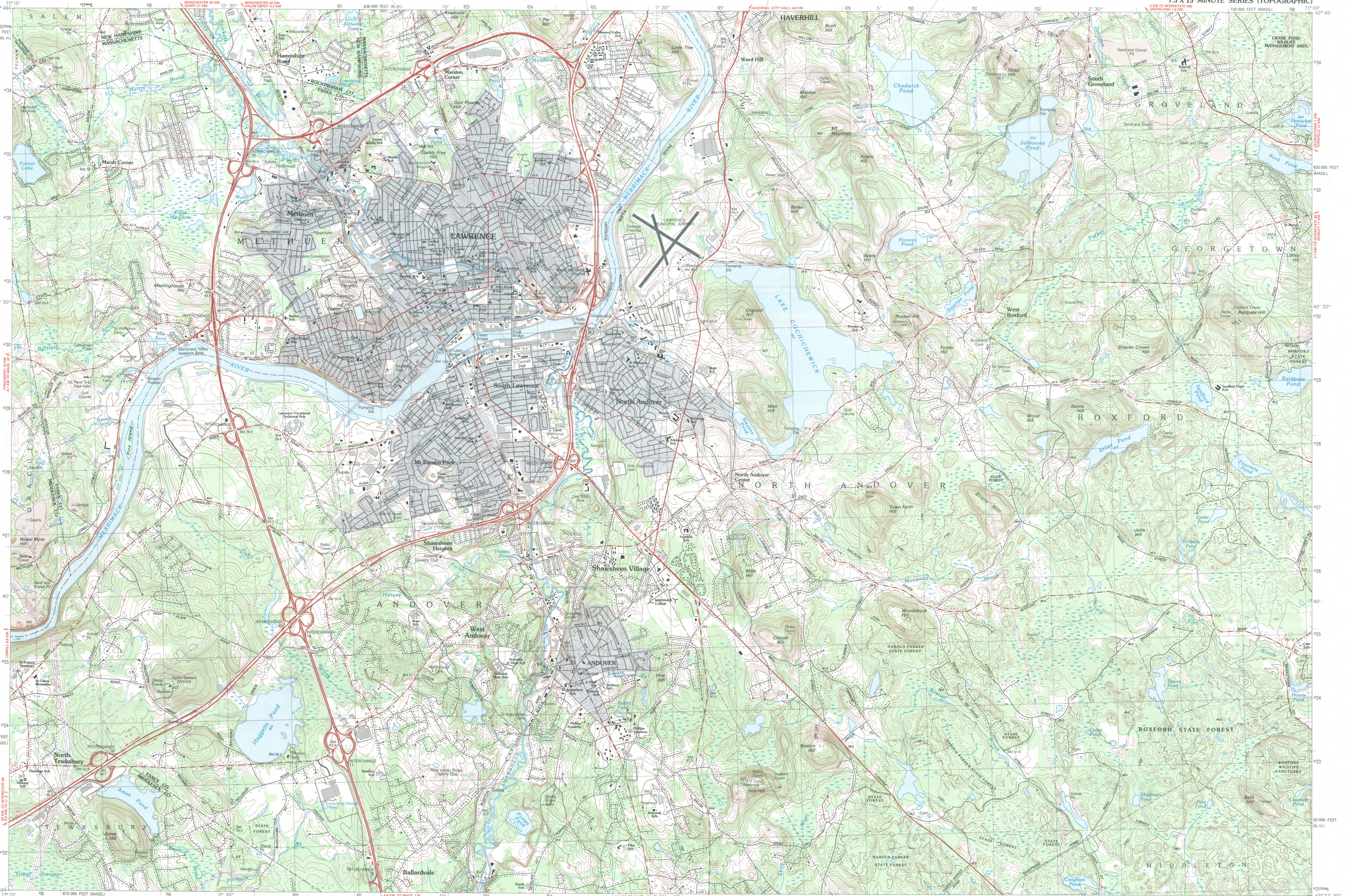
**Lawrence**  
MASSACHUSETTS-  
NEW HAMPSHIRE

1:25 000-scale metric  
topographic map

7.5 X 15 MINUTE QUADRANGLE  
SHOWING

- Contours and elevations in meters
- Highways, roads and other manmade structures
- Water features
- Woodland areas
- Geographic names

1987



Produced by the United States Geological Survey in cooperation with Massachusetts Department of Public Works

Control by USGS, NOS/NOAA, and Commonwealth of Massachusetts agencies

Compiled by photogrammetric methods from aerial photographs taken 1978. Field checked 1979. Map edited 1987

The west half of this area also covered by 7.5-minute 1:24,000-scale map: Lawrence dated 1966

The west half of this area supersedes South Groveland 1:24,000-scale map dated 1966

Projection and 1000-meter grid: Universal Transverse Mercator, zone 19

10,000-foot grid ticks based on Massachusetts coordinate system, modified zone, and New Hampshire coordinate system

1927 North American Datum

1927 North American Datum 1983, move the projection lines 6 meters south and 41 meters west as shown by dashed corner ticks

There may be private inholdings within the boundaries of the National or State reservations shown on this map

CONTOUR INTERVAL 3 METERS  
NATIONAL GEODETIC VERTICAL DATUM OF 1929  
CONTINENTAL ELEVATIONS SHOWN TO THE NEAREST 0.1 METER  
OTHER ELEVATIONS SHOWN TO THE NEAREST 0.5 METER

THIS MAP COMPLIES WITH NATIONAL MAP ACCURACY STANDARDS

CONVERSION TABLE		DECLINATION DIAGRAM		ADJOINING MAPS		
Meters	Feet	Magnetic Declination		1	2	3
1	3.2808	Magnetic declination		1	2	3
2	6.5617	Magnetic declination		4	5	6
3	9.8425	Magnetic declination		7	8	9
4	13.1234	Magnetic declination		10	11	12
5	16.4042	Magnetic declination		13	14	15
6	19.6850	Magnetic declination		16	17	18
7	22.9659	Magnetic declination		19	20	21
8	26.2467	Magnetic declination		22	23	24
9	29.5275	Magnetic declination		25	26	27
10	32.8084	Magnetic declination		28	29	30

To convert meters to feet multiply by 3.2808  
To convert feet to meters multiply by 0.3048

UTM grid convergence (0M at 100° meridian; declination (M) at center of map; Diagram is approximate)

FOR SALE BY U. S. GEOLOGICAL SURVEY  
DENVER, COLORADO 80225, OR RESTON, VIRGINIA 22092

Topographic Map Symbols

Primary highway, hard surface	.....
Secondary highway, hard surface	.....
Light-duty road, hard or improved surface	.....
Unimproved road, trail	.....
Road marker: Interstate, U. S. State	.....
Railroad: standard gage; narrow gage	.....
Bridge; drawbridge	.....
Footbridge; overpass; underpass	.....
Railup area: only selected landmark buildings shown	.....
House; barn; church; school; large structure	.....
Boundary:	.....
National, with monument	.....
State	.....
County, parish	.....
Civil township, precinct, district	.....
Incorporated city, village, town	.....
National or State reservation, small park	.....
Land grant with monument, found section corner	.....
U. S. public lands survey: range, township, section	.....
Range, township, section line: location approximate	.....
Range or field line	.....
Power transmission line, located tower	.....
Dam; dam with lock	.....
Cemetery, grave	.....
Compost; picnic area; U. S. location monument	.....
Windmill; water well; spring	.....
Mine shaft; prospect; adit or cave	.....
Control: horizontal station; vertical station; spot elevation	.....
Contour: index; intermediate; supplementary; depression	.....
Disturbed surface: strip mine, levee, sand	.....
Bathymetric contours: "dca; intermediate	.....
Perennial lake and stream; intermittent lake and stream	.....
Rapids; large and small; falls; large and small	.....
Submerged marsh; marsh; swamp	.....
Land subject to controlled inundation; woodland	.....
Scrub; mangrove	.....
Drain; viewpoint	.....

A pamphlet describing topographic maps is available on request



**The Commonwealth of Massachusetts**

William Francis Galvin, Secretary of the Commonwealth  
Massachusetts Historical Commission

21 August 1995

Ms. Carol Shull  
National Register of Historic Places  
Department of the Interior  
National Park Service  
P. O. Box 37127  
Washington, D. C. 20013-7127



Dear Ms. Shull,

Enclosed please find the following nomination form:

Tavern Acres Historic District, North Andover (Essex County), Massachusetts 01845

The nomination has been voted eligible by the State Review Board and has been signed by the State Historic Preservation Officer. The owners of the property within the district were notified of pending State Review Board consideration 30 to 75 days before the meeting and were afforded the opportunity to comment.

Sincerely,

A handwritten signature in cursive script that reads "Betsy Friedberg".

Betsy Friedberg  
National Register Director  
Massachusetts Historical Commission

cc: Maria Ward, Chairperson, North Andover Historical Commission  
Chairperson, Board of Selectmen, Town of North Andover  
Phila Slade, 21 Bradford Street, North Andover 01845

Enclosure