

C. C. GOODEN
1916



112 No. MAIN , FARMLAND DOWNTOWN
HISTORIC DISTRICT

RANDOLPH COUNTY

PHOTO #1



110 N. MAIN

FARMLAND DOWNTOWN
HISTORIC DISTRICT

RANDOLPH COUNTY

PHOTO #2



106 No. MAIN ST.

RANDOLPH COUNTY

PHOTO # 3

FARMLAND DOWNTOWN
HISTORIC DISTRICT

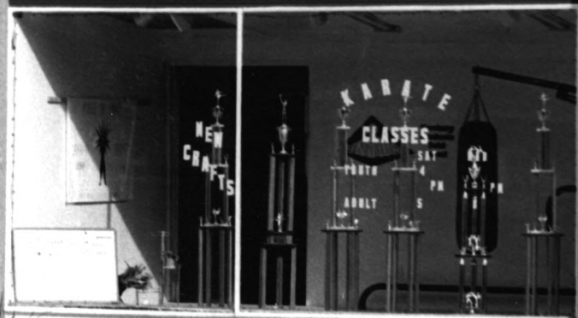


104 N. MAIN

FARMLAND DOWNTOWN
HISTORIC DISTRICT

RANDOLPH COUNTY

PHOTO #4



NEW
CRAFTS

KARATE
CLASSES

YOUTH SAT 4-6 PM
ADULT SAT 5-7 PM

104. N. MAIN (30. BLDG) FARMLAND DOWNTOWN
HISTORIC DISTRICT

RANDOLPH COUNTY

PHOTO #5



Thrift-E **SUPER MARKET**

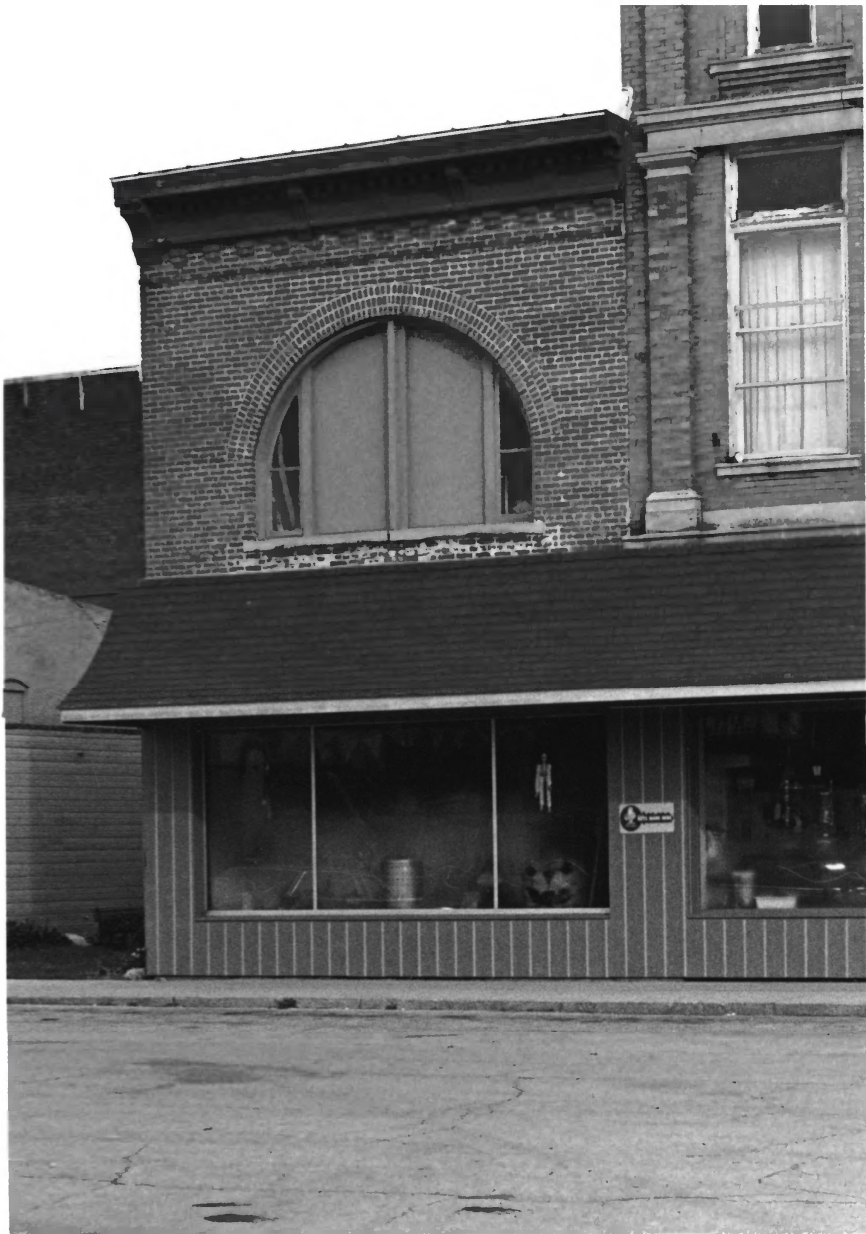
RED GOLD
TOMATOES

100 No. MAIN

FARMLAND DOWNTOWN
HISTORIC DISTRICT

RANDOLPH COUNTY

PHOTO #6



103 E. HENRY

FARMLAND DOWNTOWN
HISTORIC DISTRICT

RANDOLPH COUNTY

PHOTO # 7

KNIGHTS OF PYTHIAS
No. 463
1908



105 E. HENRY ST.
(East BUNWONG)

FARMLAND DOWNTOWN
HISTORIC DISTRICT

PHOTO #8

RANDOLPH COUNTY

FARMLAND
CITY
BUILDING

FARMLAND
CITY
BUILDING



104-106 E. HENRY

FARMLAND DOWNTOWN
HISTORIC DISTRICT

PHOTO # 9

RANDOLPH COUNTY



102 E. HENRY ST.
101 - 109 So. MAIN

PHOTO # 10

FARM LAND DOWNTOWN
HISTORIC DISTRICT

RANDOLPH COUNTY



112 S. MAIN ST.

FARM LAND DOWNTOWN

HISTORIC DISTRICT

Photo # 11

RANDOLPH COUNTY



104 S. MAIN

FARMLAND DOWNTOWN
HISTORIC DISTRICT

PHOTO # 12

RANDOLPH COUNTY



FARMERS FARMING CHURCH

NO PARKING

WYLA KING Family Restaurant

WYLA KING

WYLA KING

RANCH STEAK HALL

DRY CLEANING

100 S. MAIN STREET

FARMLAND DOWNTOWN
HISTORIC DISTRICT

PHOTO # 13

RANDOLPH COUNTY



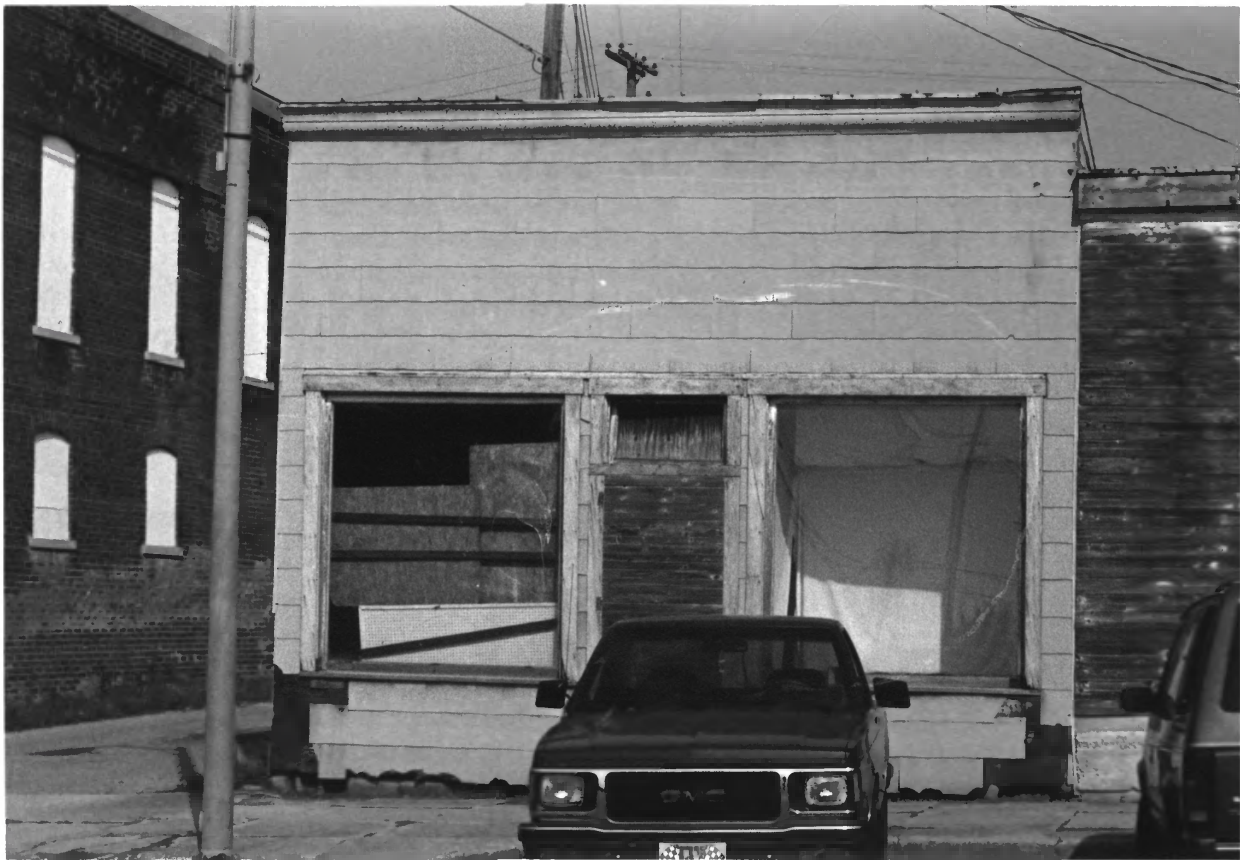
MORNING
FRESH EGG
FARMS

112-114 W. HENRY

FARMLAND DOWNTOWN
HISTORIC DISTRICT

PHOTO # 14

RANDOLPH COUNTY

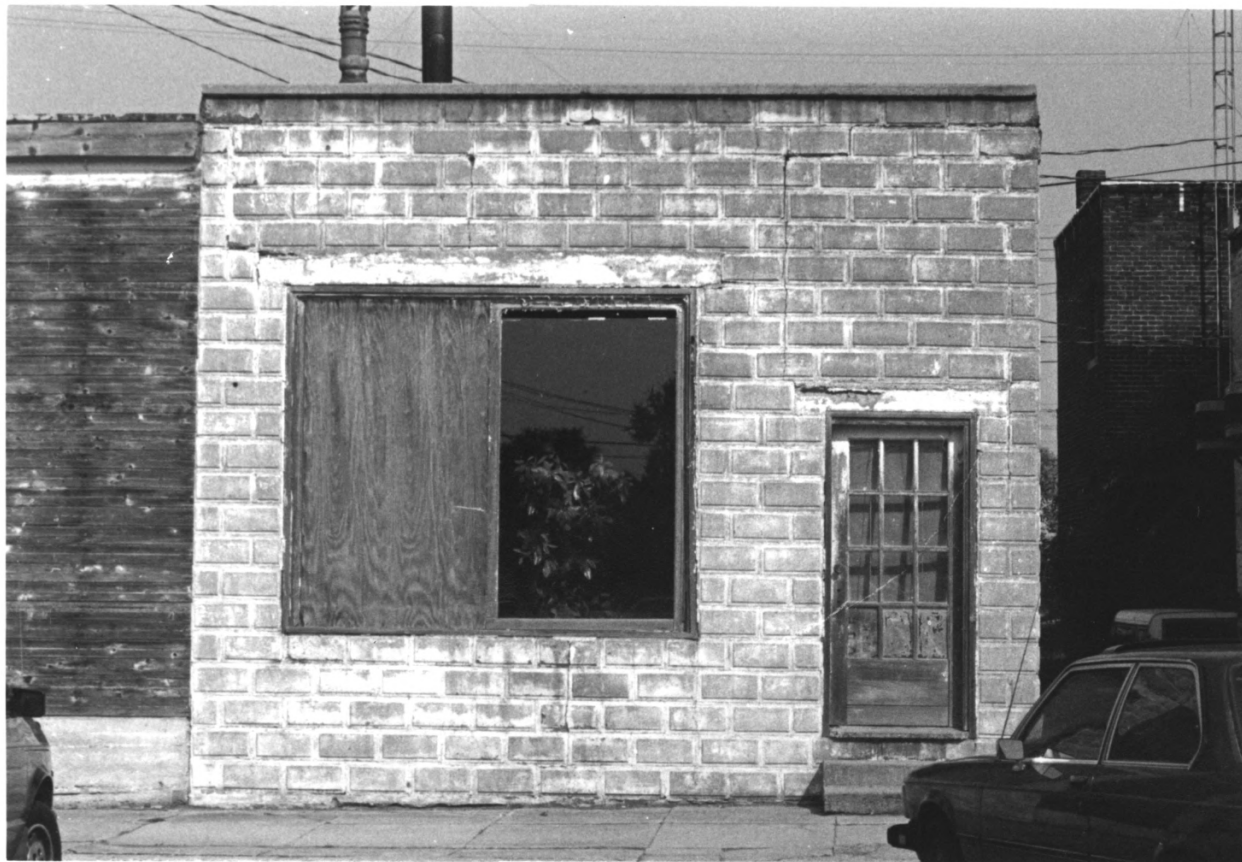


110 W. HENRY

FARMLAND DOWNTOWN
HISTORIC DISTRICT

PHOTO # 15

RANDOLPH COUNTY



108 W. HENRY

FARMLAND DOWNTOWN

HISTORIC DISTRICT

PHOTO # 16

RANDOLPH COUNTY



104-106 W. HENRY

FARMLAND DOWNTOWN
HISTORIC DISTRICT

PHOTO # 17

RANDOLPH COUNTY

TRUSTEES

V.M. Williams.
A.S. Blonaker.
W.H. Snyder.

BUILDING
COMMITTEE

E.F. Halliday.
E.R. McIntire.
J.E. Coesman.
A.J. Purdley.
H.F. Wood.

ARCHITECT
CONTRACTOR

W.S. Kaufman.
J.E. Shefferly.

101 N. MAIN

FARMLAND DOWNTOWN

HISTORIC DISTRICT

PHOTO # 18

RANDOLPH COUNTY



W. H. H. H. H. H.
1908.

Franklin & Howard
PLASTER & CONCRETE WORK
CATHRENS
MONEY CENTER

WATER PUMP
WATER WELL

R

101 N. MAIN

FARM LAND DOWNTOWN

HISTORIC DISTRICT

PHOTO # 19

RANDOLPH COUNTY

F & A.M.

R R

VIDEO

STATION

CLOSED

103 N. MAIN

PHOTO # 20

FARMLAND DOWNTOWN
HISTORIC DISTRICT

RANDOLPH COUNTY

WOOD

SLAUGHTER
insurance &
real estate

ATION



105 N. MAIN

FARMLAND DOWNTOWN

HISTORIC DISTRICT

PHOTO #21

RANDOLPH COUNTY



107 N. MAIN

FARMLAND DOWNTOWN

HISTORIC DISTRICT

PHOTO #22

RANDOLPH COUNTY



111 N. MAIN

FARMLAND DOWNTOWN

HISTORIC DISTRICT

PHOTO # 23

RANDOLPH COUNTY



113 N. MAIN

FARMLAND DOWNTOWN

HISTORIC DISTRICT

PHOTO # 24

RANDOLPH COUNTY



115 N. MAIN

FARMLAND DOWNTOWN
HISTORIC DISTRICT

PHOTO # 29

RANDOLPH COUNTY



121 N. MAIN ST.

FARMLAND DOWNTOWN

HISTORIC DISTRICT

PHOTO # 26

RANDOLPH COUNTY



207 N. MAIN

FARMLAND DOWNTOWN

HISTORIC DISTRICT

PHOTO #27

RANDOLPH COUNTY



CORNER OF MAIN &
HENRY STREET

C. 1912

VIEW LOOKING TOWARD
FORMER MCCORMICK &
YOUNT HARDWARE STORE

AT NE CORNER MAIN & HENRY

DURING DRAWING, PROBABLY FROM UPPER
FLOOR OF OPERA HOUSE

PHOTO COURTESY MRS. HELEN YOUNT
NO. MANCHESTER, IN-

PHOTO # 28

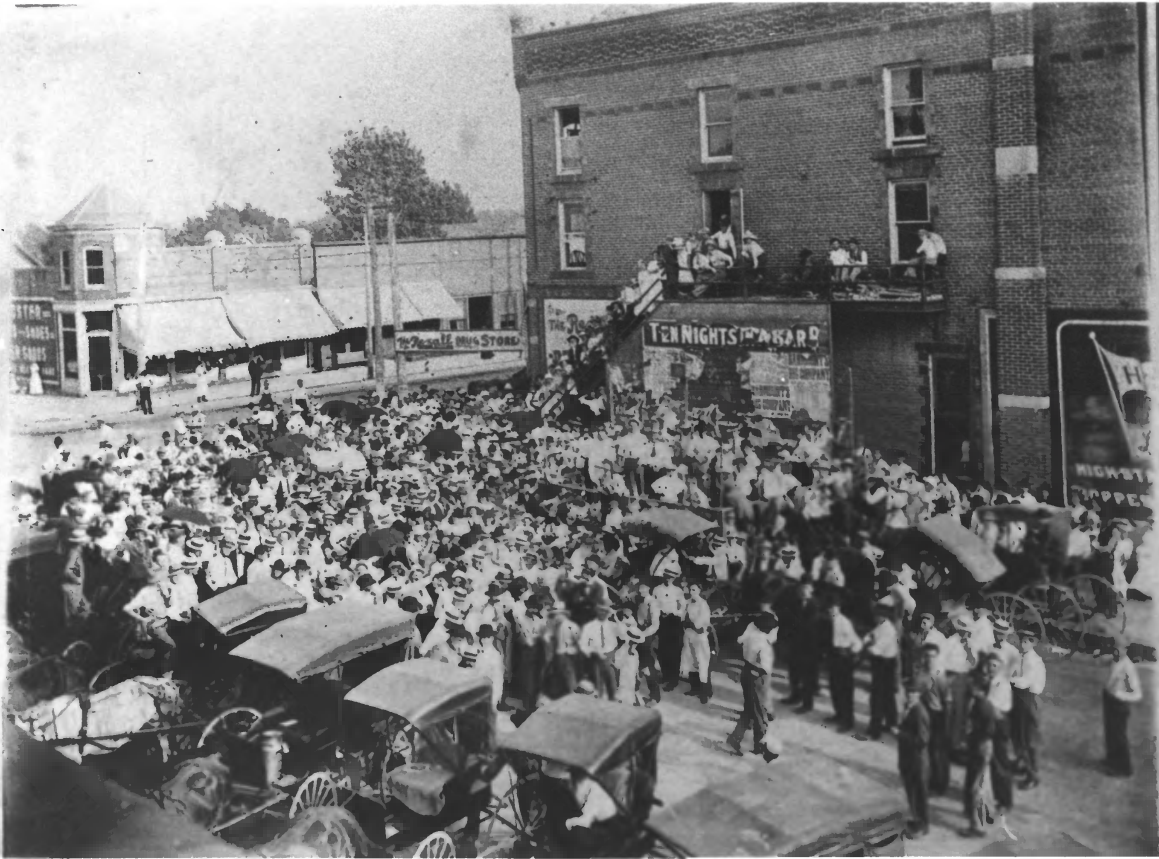
FARMLAND DOWN-
TOWN HISTORIC
DISTRICT
RANDOLPH COUNTY,
INDIANA



INTERIOR OF MCCORMICK & YOUNT HARDWARE
STORE (C. 1912)

FARMLAND DOWNTOWN HISTORIC DISTRICT
RANDOLPH COUNTY, INDIANA

PHOTO # 29



CORNER MAIN & HENRY STS.

FARMLAND DOWNTOWN HISTORIC DISTRICT

VIEW FROM WEST HENRY STREET (PROBABLY
FROM UPPER FLOOR, I.O.O.F. BUILDING)
LOOKING SE DURING McCORMICK &
YOUNT DRAWING, OPERA HOUSE IN
RIGHT FOREGROUND.

PHOTO # 30



E. HENRY STREET

FARMLAND DOWNTOWN HISTORIC DISTRICT

VIEW LOOKING NE TOWARD REAR OF
100 NO. MAIN ST., ALSO SHOWING #105
EAST HENRY.

L TO R, C. F. YOUNT, dau. MINA (CONYON)
AND WIFE MARTELLA.

PHOTO #31



NORTH MAIN STREET

FARMLAND DOWNTOWN HISTORIC DISTRICT
RANDOLPH COUNTY, INDIANA

VIEW LOOKING NO. FROM S. MAIN

C. 1913

PHOTO #32

located on Henry
 et, in the town of
 hich is one of the
 a Indiana, and lies
 of the richest farm
 in the central states.
 e cultivated under
 tems known, and
 takes great pride in
 ment of his home
 of the surrounding
 e to be found some
 and most up to date
 ences in the state,
 u in every respect.
 made up of good
 of good business
 line of merchan-
 presented. We now
 lights and this
 street will be paved
 for nearly one mile,

SAY
 ed anything in the
 ware think of our
 are requested to fol-
 ion demand
 50—now
 buy



VIEW OF 100 NO. MAIN
FROM NEWSPAPER SUPPLEMENT
RANDOLPH COUNTY ENTERPRISE
FEBRUARY 22, 1912

FARMHAND DOWNTOWN HISTORIC DISTRICT

PHOTO #33



W. HENRY STREET

FARMLAND DOWNTOWN HISTORIC DISTRICT

VIEW LOOKING NE TOWARD I.O.O.F. BLDG,
AND E. SIDE, N. MAIN

C. 1918

PHOTO # 34