



Thornewood Manor House: Tacoma, Wa.  
1909-1911 Kirtland K. Cutter F.A.I.A.  
facade facing east (Mt. Rainier) 1981

THORNEWOOD  
Tacoma, Washington

Rick Thacker  
December 1980  
Office of Archaeology & Historic Preservation  
Olympia, Washington

Manor House: east elevation

FEB 16 1982



Thornewood Manor House: Tacoma, Wa.  
1909-1911 Kirtland K. Cutter F.A.I.A.  
facade facing west (American Lake)  
1981

THORNEWOOD  
Tacoma, Washington

Rick Thacker  
December 1980  
Office of Archaeology & Historic Preservation  
Olympia, Washington

Manor House: partial west elevation facing  
American Lake  
2 of 11

FEB 16 1982





Thornewood Manor House: Tacoma, Wa.  
1909-1911 Kirtland K. Cutter F.A.I.A.  
detail of entrance facing east: lantern  
and Wilkeson sandstone: 1981

THORNEWOOD  
Tacoma, Washington

Rick Thacker  
December 1980  
Office of Archaeology & Historic Preservation  
Olympia, Washington

Manor House: formal entrance, east elevation.  
Detail of lantern and Wilkeson sandstone trim.





Thornewood Manor House: Tacoma, Wa.  
1909-1911 Kirtland K. Cutter F.A.I.A.  
detail: urn  
1981

---

THORNEWOOD  
Tacoma, Washington  
Rick Thacker  
December 1980  
Office of Archaeology & Historic Preservation  
Olympia, Washington  
Manor House: detail of a sandstone urn.





Thornewood Manor House: Tacoma, Wa.  
1909-1911 Kirtland K. Cutter F.A.I.A.  
detail: Wilkeson sandstone water spout  
above entrance from the east: 1981

THORNEWOOD  
Tacoma, Washington

Rick Thacker  
December 1980  
Office of Archaeology & Historic Preservation  
Olympia, Washington

Manor House: waterspout of Wilkeson sand-  
stone above formal entrance, east elevation.





Thornewood Manor House: Tacoma, Wa.  
1909-1911 Kirtland K. Cutter F.A.I.A.  
interior shot showing placement of  
stained glass inset in leaded windows  
1981

THORNEWOOD  
Tacoma, Washington

Rick Thacker  
December 1980  
Office of Archaeology & Historic Preservation  
Olympia, Washington

Manor House: partial interior view of oriel  
window, west elevation.

FEB 16 1982

OTHER SEAT OF  
MR. CHESTER THORNE  
AMERICAN LAKE, WASHINGTON



Cutler & Mahony Architects  
Spokane 1900  
Drawing by Hutchinson

Thornewood Manor House: Tacoma, Wa.  
Kirtland K. Cutter F.A.I.A.  
photograph of original rendering 1909)  
facade facing east (Mt. Rainier)

THORNEWOOD  
Tacoma, Washington

Rick Thacker  
December 1980  
Office of Archaeology & Historic Preservation  
Olympia, Washington

Manor House: Rendering from the office of  
Cutter and Malmgren, Architects, dated 1909.  
East elevation.



MR. CHESTER THORNE  
1884



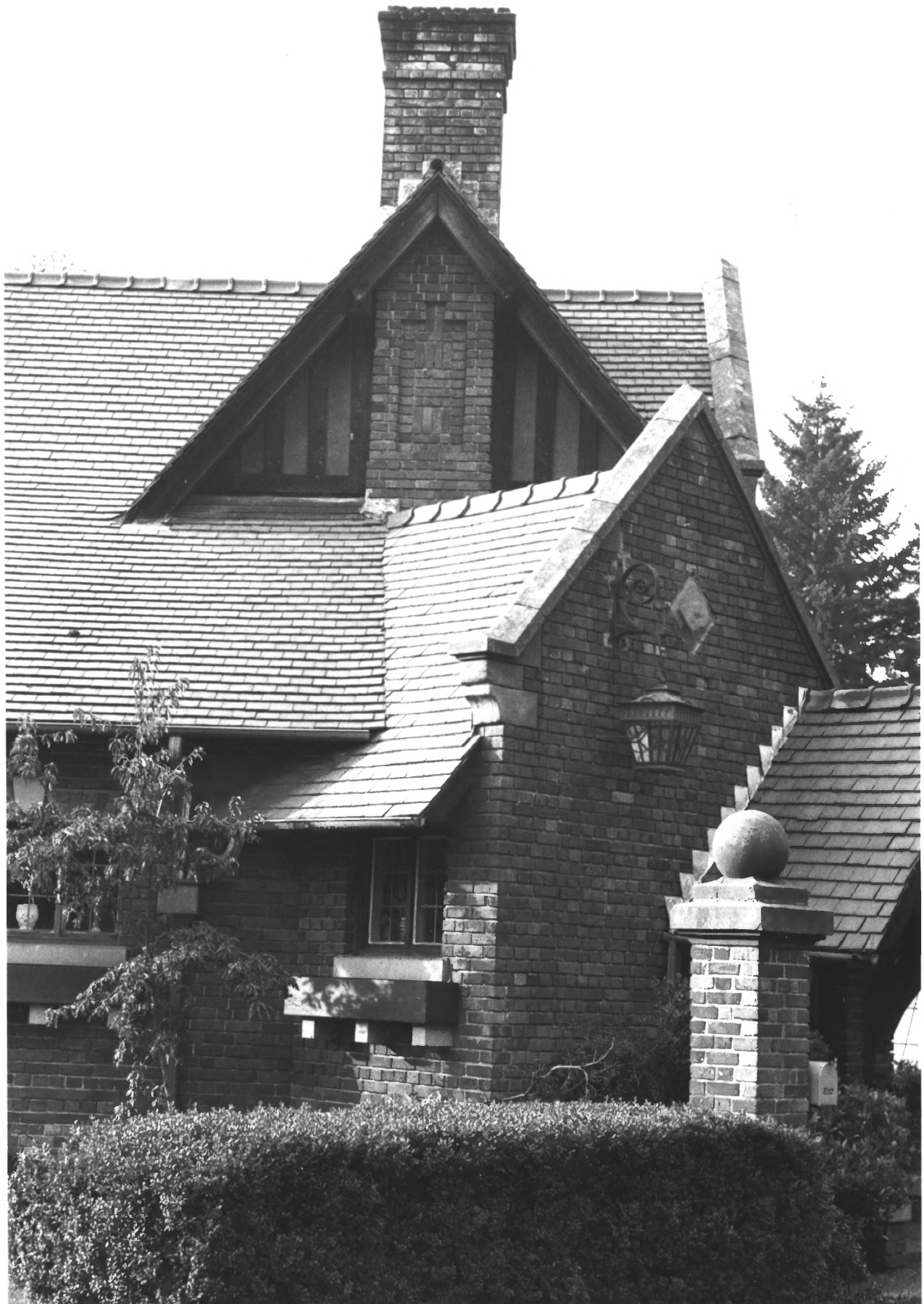
Thornewood Manor House: Tacoma, Wa.  
Kirtland K. Cutter F.A.I.A.  
photograph of original rendering 1909  
facade facing west (American Lake)  
1981

THORNEWOOD  
Tacoma, Washington

Rick Thacker  
December 1980  
Office of Archaeology & Historic Preservation  
Olympia, Washington

Manor House: Rendering from the office of  
Cutter and Malmgren. West elevation.

**FEB 16 1982**





Thornewood Gate House: Tacoma, Wa.  
1909-1911 Kirtland K. Cutter F.A.I.A.  
detail showing massing of forms around  
front entrance from south-east: 1981

THORNEWOOD  
Tacoma, Washington

Rick Thacker  
December 1980

Office of Archaeology & Historic Preservation  
Olympia, Washington

Gatehouse: detail showing massing of forms  
around front entrance at southeast corner.

FEB 16 1982



Thornewood Gate House: Tacoma, Wa.  
1909-1911 Kirtland K. Cutter F.A.I.A.  
garden facade facing south  
1981

THORNEWOOD  
Tacoma, Washington

Rick Thacker  
December 1980  
Office of Archaeology & Historic Preservation  
Olympia, Washington

Gatehouse: south elevation facing the  
garden.

FEB 16 1982





Thornewood Carriage House: Tacoma, Wa.  
1909-1911 Kirtland K. Cutter F.A.I.A.  
Facade facing north: 1981

THORNEWOOD  
Tacoma, Washington

Rick Thacker  
December 1980  
Office of Archaeology & Historic Preservation  
Olympia, Washington

Carriage House: partial north elevation.