

NPS Number 70-9-30-0008

Title: White Oaks District

Loc. Lincoln County, N.M.  
The Old Abe Mine

(1)

White Oaks

White Oaks - The Old Abe Mine



NPS NUMBER 70-9-35-0008

Title: White Oaks District

Loc. Lincoln Co., N. M.  
Murphy House

(2)

PROPERTY OF THE NATIONAL REGISTER

White Oaks, stairway in the Murphy house



NPS Number 70-9-35-0008

Title: White Oaks District

Loc.

Lincoln Co., N.M.

Hayle House

③

**PROPERTY OF THE NATIONAL REGISTER**

*White Oaks - stairway in the Hayle house*



NPS Number 70-9-35-0008

Title: White Oaks District

Loc. Lincoln Co., N.M.

(4)

The Hoyle House

**PROPERTY OF THE NATIONAL REGISTER**

*White Oaks. The Hoyle house*





9/4/70 d.o.e.

NPS Number

70-9-35-0008

Title:

White Oaks District

White Oaks

Loc.

Lincoln Co., N.M.

(5)

Showing Store building

schoolhouse and Murphy house

Photo credit - Jim Samuelson



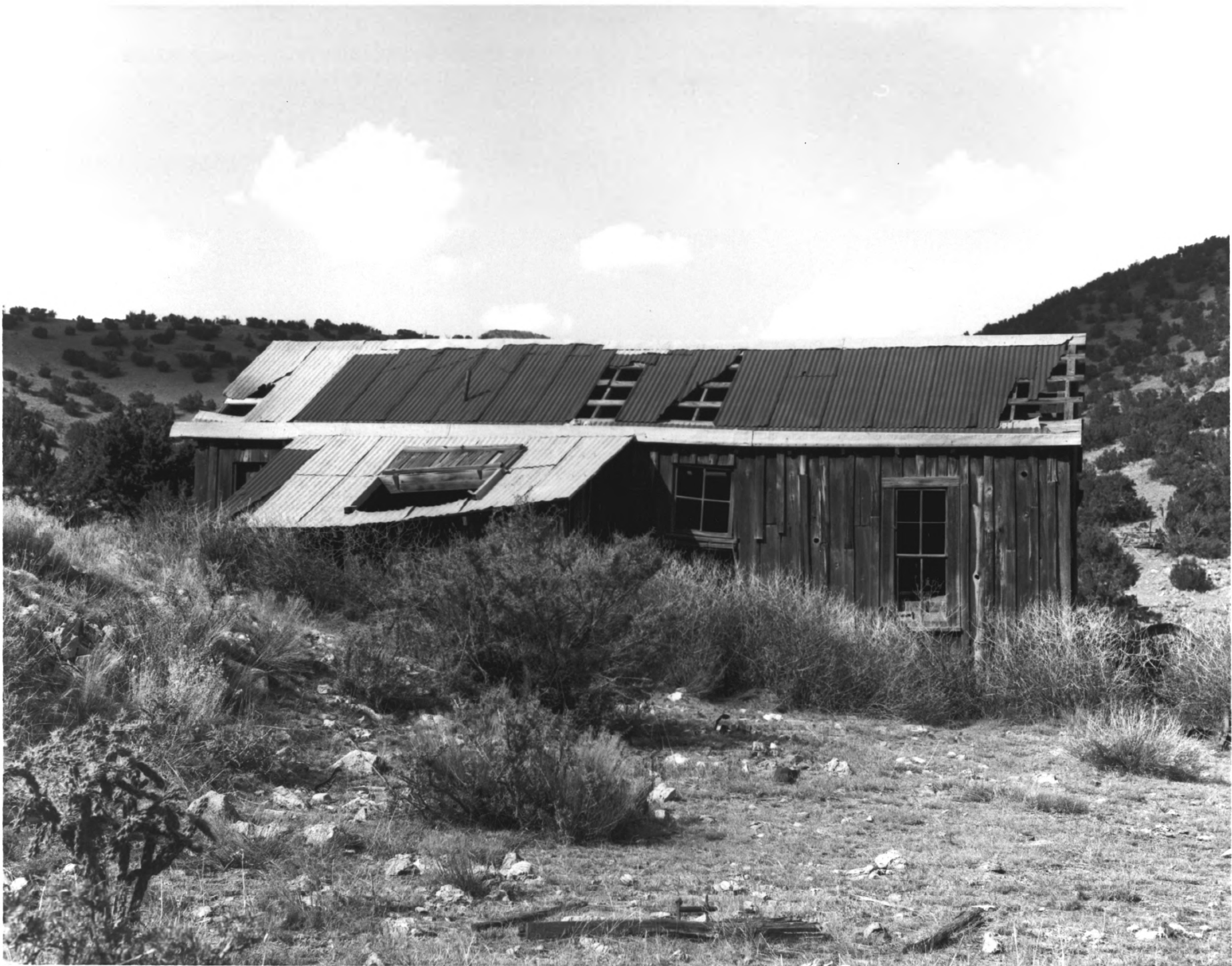
NPS Number 9-4-70

Title: White Oaks District

Loc. Lincoln Cnty, N.M.

view from S.W.

Murphy House



JUN 06 1979

*Historic*  
White Oaks District

Looking North towards Hoist House of  
Rita Mine

Wendell Bell

*Lincoln County*

History of Engineering Program

Texas Tech University

*#1 of 15*

10-16-78

MAR 13 1979



*Historic*

*Lincoln Co.*

White Oaks District

Looking south-southeast toward Rita,  
North Homestake, and Smuggler Mines

Wendell Bell

History of Engineering Program

Texas Tech University

*#207 15*

10-16-78

JUN 06 1979

MAR 13 1979





*Historic*

MAR 13 1979

White Oaks District

Looking east, south-east to compressor  
at North Homestake Mine

*Lincoln Co.*

Wendell Bell

History of Engineering Program

Texas Tech University

*# 3 of 15*

10-16-78

JUN 06 1979



Historic

Lincoln Co,

White Oaks District

Looking west to hoist, at North Homestake  
Mine

Wendell Bell

#4 of 15

History of Engineering Program

Texas Tech University

10-16-78

JUN 06 1979

1979  
MAR 13 1979



*Historic*  
White Oaks District

MAR - 3 1979

*Lincoln Co.*

Looking northeast toward town of White  
Oaks from South Homestake Mine

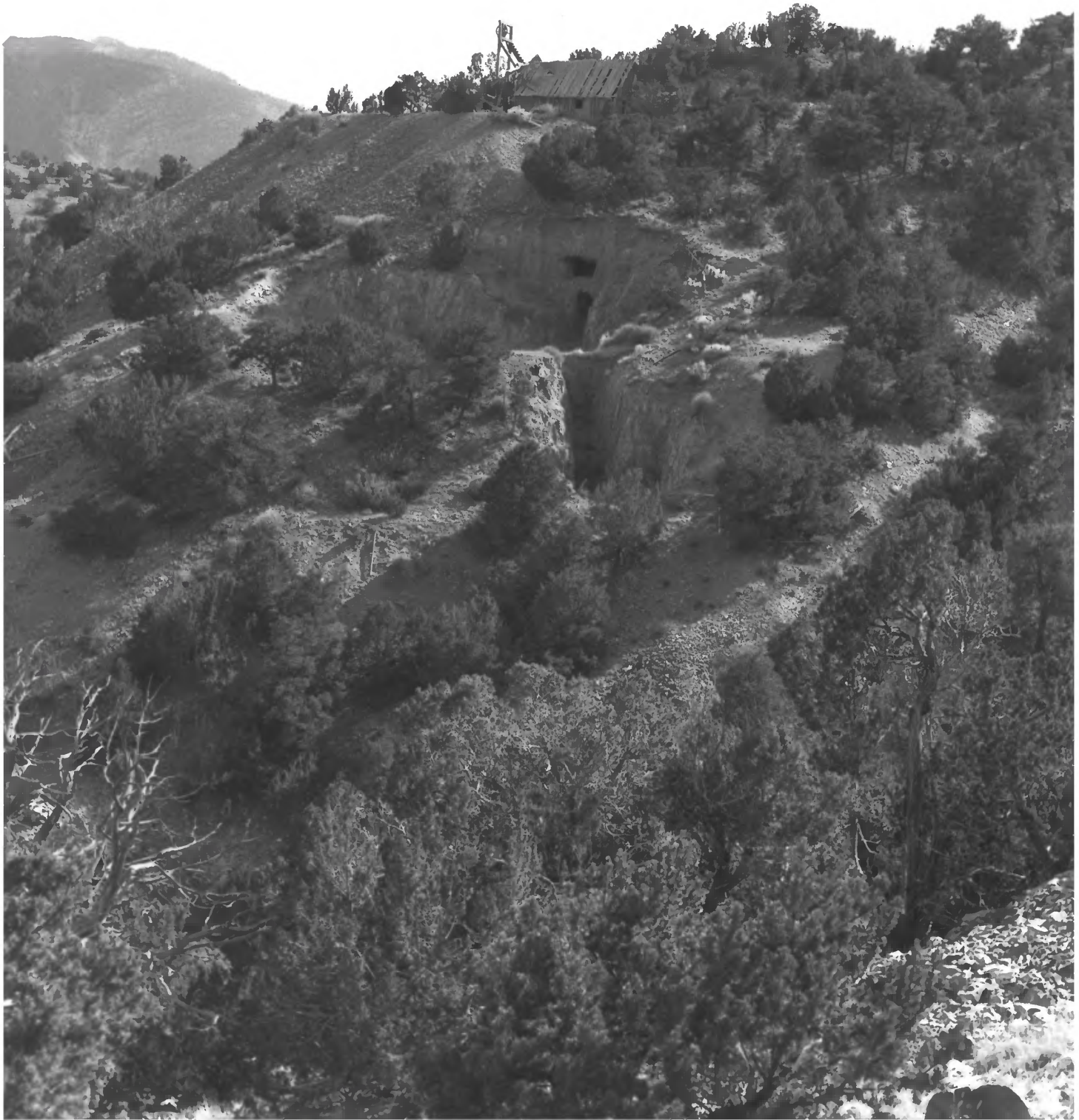
Wendell Bell

History of Engineering Program

10-16-78

*#5 of 15*

JUN 06 1979



MAR 13 1979

*Historic*

*Lincoln Co.*

White Oaks District

Looking south toward South Homestake  
Mine

Wendell Bell

*#608 15*

History of Engineering Program

10-16-78

JUN 6 6 1979





Historic  
White Oaks District Lincoln Co.  
Looking northeast toward ore bins of  
the South Homestake Mine  
Wendell Bell #7 of 15  
History of Engineering Program  
Texas Tech University  
10-16-78  
JUN 06 1979



*Historic*

*Lincoln Co.*

White Oaks District

Looking north towards shaft of Jewelry

Shop Mine

*#8 of 15*

Wendell Bell

History of Engineering Program

Texas Tech University

10-16-78

*JUN 06 1979*

*1979  
MAR 13 1979*



Historic

MAR 13 1979

White Oaks District

LINCOLN Co.

Detail of band connector for cyanide  
tanks

#9 of 15

Wendell Bell

History of Engineering Program

Texas Tech University

10-16-78

JUN 06 1979

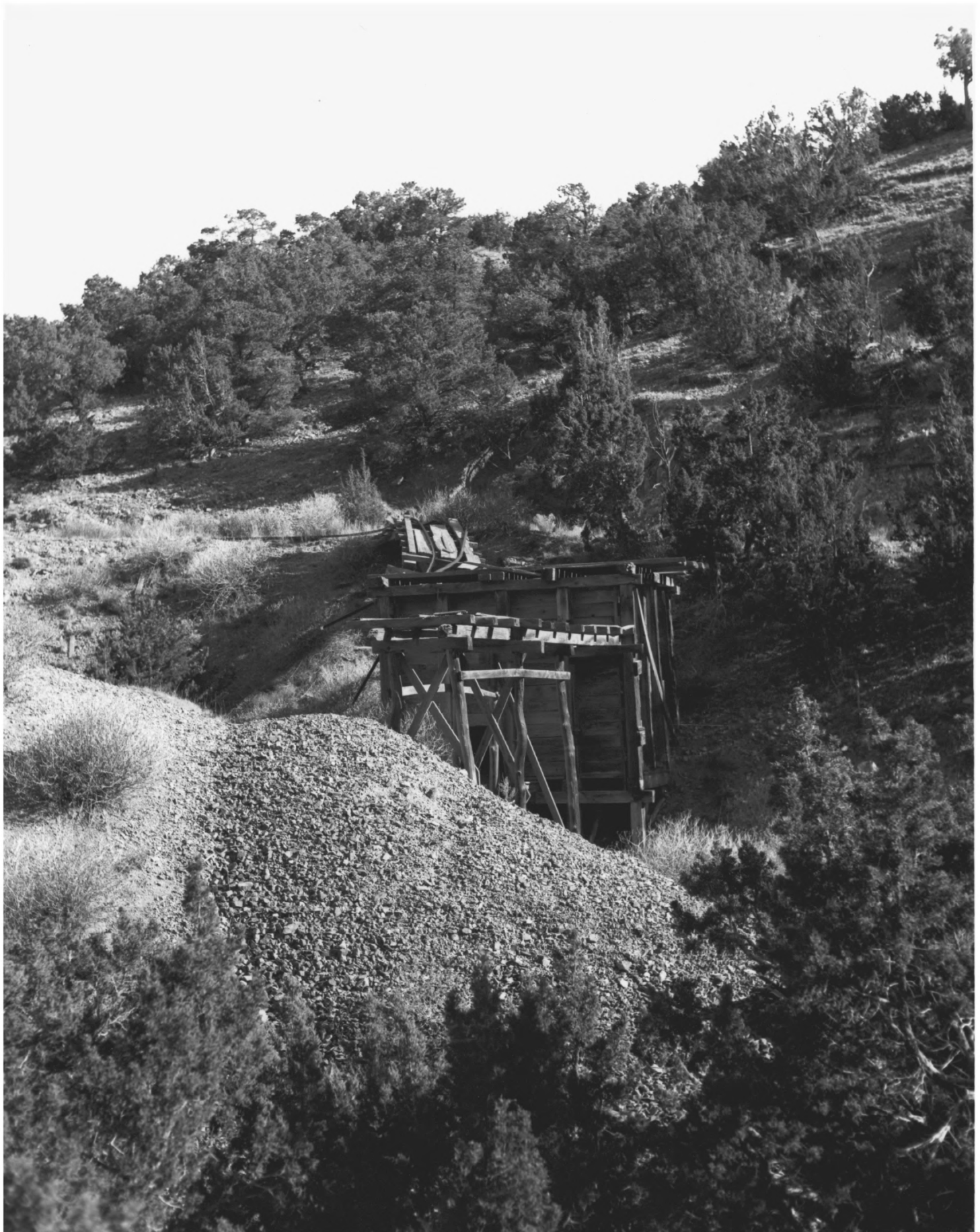


White Oaks District *Historic* Lincoln Co.  
Looking east toward ore bin, Smuggler Mine  
Wendell Bell  
History of Engineering Program  
Texas Tech University # 10 of 15  
10-16-78

JUN 06 1979

MAR 13, 1979





MAR 13 1979

*Historic*

White Oaks District

*Lincoln Co.*

Looking southeast toward ore bin, Smuggler  
Mine

*#1/08/15*

Wendell Bell

History of Engineering Program

Texas Tech University

10-16-78

JUN 06 1979



*Historic*

**MAR 13 1979**

*Lincoln Co.*

White Oaks District

looking north to the headframe of Old

Abe Mine

*#1207 15*

Wendell Bell

History of Engineering Program

Texas Tech University

**JUN 6 6 1979**

10-16-78



White Oaks District *Historic Lincoln Co,*  
Looking southeast toward cyanide tanks  
of Old Abe Mill  
Wendell Bell *#130715*  
History of Engineering Program  
Texas Tech University  
10-16-78

JUN 06 1979

MAR 23 1979



*Historic*

MAR 13 1979

White Oaks District

Looking southwest to boiler in the Hoist  
House at the Rita Mine

Wendell Bell

*Lincoln*

History of Engineering Program

*Co.*

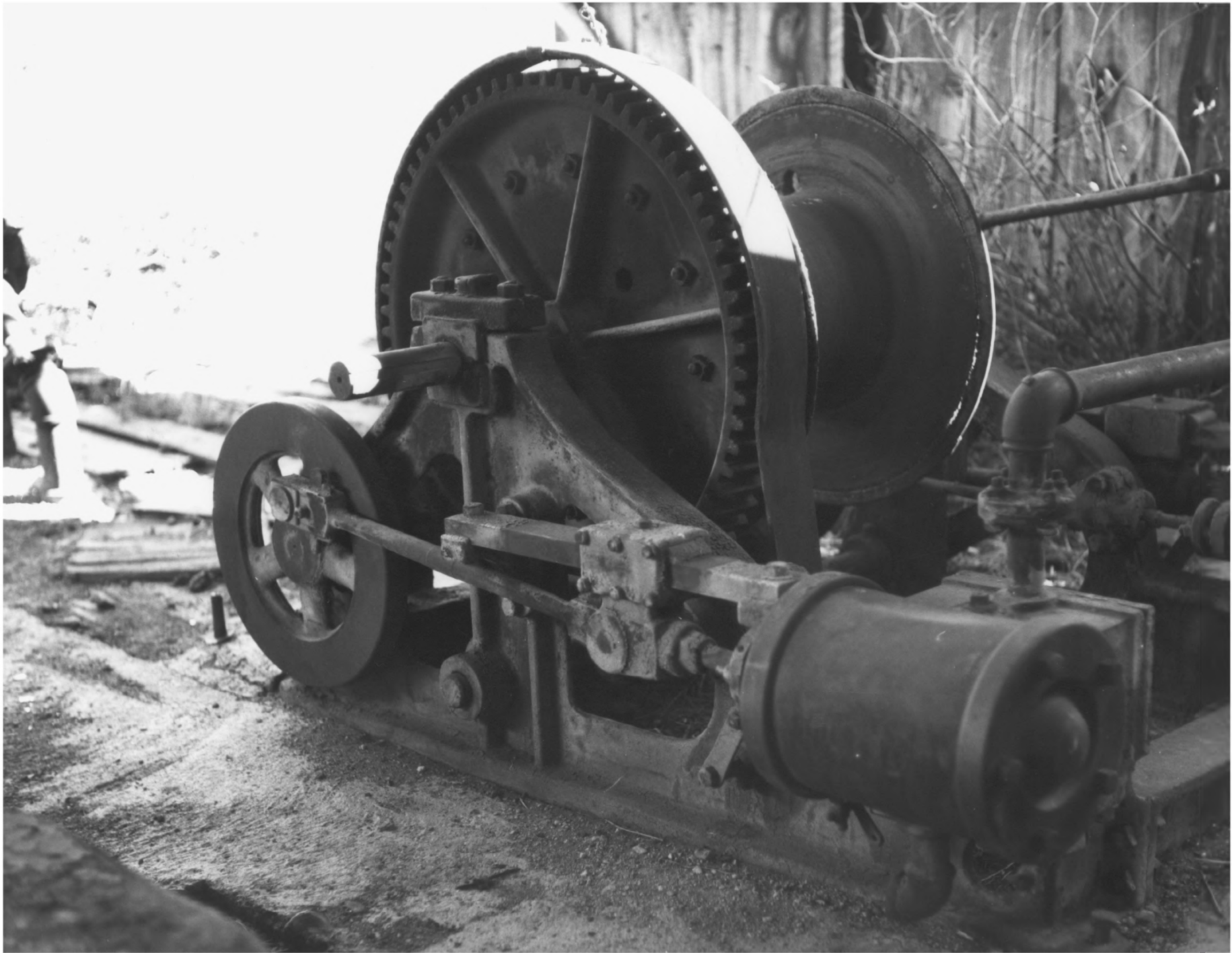
Texas Tech University

10-16-78

JUN 06 1979

*#14 of 15*





*Hoistic*

*Lincoln Co,*

White Oaks District

Looking northeast to winch, located in  
the Hoist House at Rita Mine

Wendell Bell

*#1507 B*

History of Engineering Program

Texas Tech University

10-16-78

JUN 06 1979

<sup>1979</sup>  
MAR 13 ~~1979~~