



NO RIGHT
TURN
HOSPITAL
CENTRAL

LOFT DISTRICT (NORTH)
BALTIMORE (CITY), MARYLAND
STROUSE & MARLBORO BUILDINGS
410-418 WEST LOMBARD STREET

FRED B. SHOKEN

JULY 1984

COMMISSION FOR HISTORICAL AND
ARCHITECTURAL PRESERVATION

VIEW LOOKING NORTH

~~7/33~~

1/32



LOFT DISTRICT (NORTH)

BALTIMORE (CITY) MARYLAND

STROUSE BUILDING FACADE DETAILS

414-18 WEST LOMBARD STREET

FRED B. SHOKEN

JULY 1984

COMMISSION FOR HISTORICAL AND

ARCHITECTURAL PRESERVATION

VIEW LOOKING NORTH

~~21/33~~

2/32



LOFT DISTRICT (NORTH)

BALTIMORE (CITY), MARYLAND

PACA STREET NORTH OF LOMBARD STREET

FRED B. SHOKEN

JULY 1984

COMMISSION FOR HISTORICAL AND

ARCHITECTURAL PRESERVATION

VIEW LOOKING NORTH

~~H33~~

3/32



LOFT DISTRICT (NORTH)
BALTIMORE (CITY), MARYLAND
SHUTTERS ON REARS OF BUILDING ON
REDWOOD STREET

FRED B. SLOKEN

JULY 1984

COMMISSION FOR HISTORICAL & ARCHITECTURAL
PRESERVATION

VIEW LOOKING EAST

~~24/33~~

4/32



LOFT DISTRICT (NORTH)
BALTIMORE (CITY), MARYLAND
INNER HARBOR LOFT APARTMENTS
32-42 SOUTH PACA STREET

FRED B. SHOKEN

JULY 1984

COMMISSION FOR HISTORICAL AND
ARCHITECTURAL PRESERVATION

VIEW LOOKING NORTHWEST

~~3/33~~
5/32



LOFT DISTRICT (NORTH)

BALTIMORE (CITY) MARYLAND

INNER HARBOR LOFTS - STRAUSS BLDG.

40-42 S. PACA STREET

FRED B. SHOKEN

JULY 1984

COMMISSION FOR HISTORICAL AND

ARCHITECTURAL PRESERVATION

VIEW LOOKING WEST

~~4/33~~

6/32



LOFT DISTRICT (NORTH)
BALTIMORE (CITY), MARYLAND
INNER HARBOR LOFTS - ROSENFELD BLDG.
36-38 SOUTH PACA STREET

FRED B. SHOKEN

JULY 1984

COMMISSION FOR HISTORICAL AND
ARCHITECTURAL PRESERVATION

VIEW LOOKING WEST

5133

~~7/32~~

7/32

38

INNER HARBOR LOFT APARTMENTS

36



LOFT DISTRICT (NORTH)
BALTIMORE (CITY), MARYLAND
INNER HARBOR LOFTS - STOREFRONT
36-38 S. PACA STREET

FRED B. SHOKEN

JULY 1984

COMMISSION FOR HISTORICAL AND
ARCHITECTURAL PRESERVATION

VIEW LOOKING WEST

~~26/33~~

~~12/32~~

8/32



LOFT DISTRICT (NORTH)

BAUTIMORE (CITY), MARYLAND

INNER HARBOR LOFTS - HEISER BLDG.

32-34 SOUTH PACA STREET

FRED B. SHOKEN

JULY 1984

COMMISSION FOR HISTORICAL AND
ARCHITECTURAL PRESERVATION

VIEW LOOKING WEST

~~6/33~~

~~12/32~~ 9/32



LOFT DISTRICT (NORTH)

BAITIMORE (CITY), MARYLAND

BRIGHAM HOPKINS BLDG. PACA STREET FACADE

413-21 WEST REDWOOD STREET

FRED B. SHOKEN

JULY 1984

COMMISSION FOR HISTORICAL AND
ARCHITECTURAL PRESERVATION

VIEW LOOKING SOUTHEAST

~~9/33~~

~~14/32~~ 10/32



LOFT DISTRICT (NORTH) - BORDERS OF DISTRICT
BALTIMORE (CITY) MARYLAND

UNIVERSITY OF MARYLAND BUILDINGS FROM PACA AND
BALTIMORE STREETS

FRED B. SHOKEN

JULY 1984

COMMISSION FOR HISTORICAL AND

ARCHITECTURAL PRESERVATION

VIEW LOOKING SOUTHWEST

~~27/33~~

~~#5/32~~ 11/32



LOFT DISTRICT (NORTH) - BORDERS OF DISTRICT
BALTIMORE (CITY), MARYLAND

UNIVERSITY OF MARYLAND HOSPITAL FROM PALA
AND BALTIMORE STREETS

FRED B. SHOKEN

JULY 1984

COMMISSION FOR HISTORICAL AND
ARCHITECTURAL PRESERVATION

VIEW LOOKING SOUTHWEST

~~16/32~~ 12/32



ONLY

DIAMONDS

DIAMONDS

MONEY TO LOAN

Sawdust's BOSTON LOANS

FINANCIAL SERVICES

Example's Number One Insured Beer

1-800-123-4567

243-2000

LOWE'S Office Supply Company

300 N. CHURCH ST.

BOSTON, MA 02111

OLD CLOTHING CO.

TIMOTHY

GER CO.

LOFT DISTRICT (NORTH) - BORDERS OF DISTRICT

BALTIMORE (CITY), MARYLAND

NORTH SIDE OF 400 BLOCK WEST BALTIMORE ST,

FRED B. SHOVEN

JULY 1984

COMMISSION FOR HISTORICAL AND
ARCHITECTURAL PRESERVATION

VIEW LOOKING NORTHEAST

~~17/52~~ (3/32



Equitable

Response Center
of First Security

MAY

LOFT DISTRICT (NORTH)

BALTIMORE (CITY), MARYLAND

422-424 WEST REDWOOD STREET

FRED B. SHOKEN

JULY 1984

COMMISSION FOR HISTORICAL AND
ARCHITECTURAL PRESERVATION

VIEW LOOKING EAST

~~18/32~~ 14/32



LOFT DISTRICT (NORTH)

BAUTIMORE (CITY), MARYLAND

BRIGHAM HOPKINS BLDG, REDWOOD ST. FACADE

413-21 WEST REDWOOD STREET

FRED B. SHOKEN

JULY 1984

COMMISSION FOR HISTORICAL AND
ARCHITECTURAL PRESERVATION

VIEW LOOKING SOUTHEAST

~~12/32~~ 15/32



LOFT DISTRICT (NORTH)
BALTIMORE (CITY) MARYLAND
BRIGHAM HOPKINS BLDG. DETAIL OF
TERRA COTTA

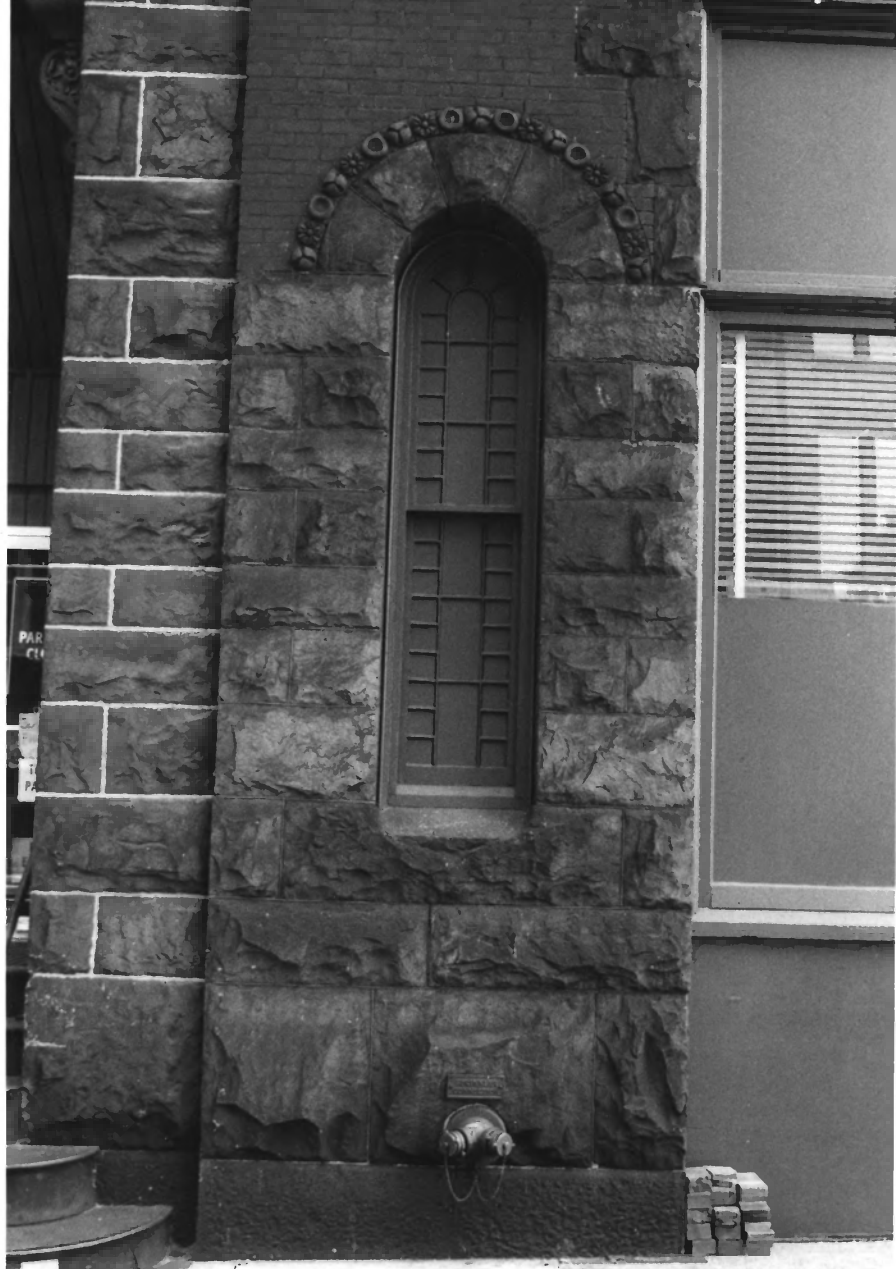
413-21 WEST REDWOOD STREET

FRED B. SHOKEN

JULY 1984

COMMISSION FOR HISTORICAL AND
ARCHITECTURAL PRESERVATION
VIEW LOOKING EAST

~~20/32~~ 14/32



LOFT DISTRICT (NORTH)

BAUTIMORE (CITY) MARYLAND

BRIGHAM HOPKINS BLDG. WINDOW DETAIL

413-21 WEST REDWOOD STREET

FRED B. SHOKEN

JULY 1984

COMMISSION FOR HISTORICAL AND
ARCHITECTURAL PRESERVATION

VIEW LOOKING SOUTH.

~~17/32~~ 17/32



LOFT DISTRICT (NORTH)
BALTIMORE (CITY) MARYLAND
BRIGHAM HOPKINS BLDG. ARCH DETAIL AT
ENTRANCE

413-21 WEST REDWOOD STREET

FRED B. SACKEN

JULY 1984

COMMISSION FOR HISTORICAL AND
ARCHITECTURAL PRESERVATION
VIEW LOOKING SOUTH

~~22/32~~ 18/32



LOFT DISTRICT (NORTH)
BALTIMORE (CITY), MARYLAND

CHEESAPEAKE SHIRT BUILDING

409 - 411 WEST REDWOOD STREET
FRED B. SACKEN

JULY 1984

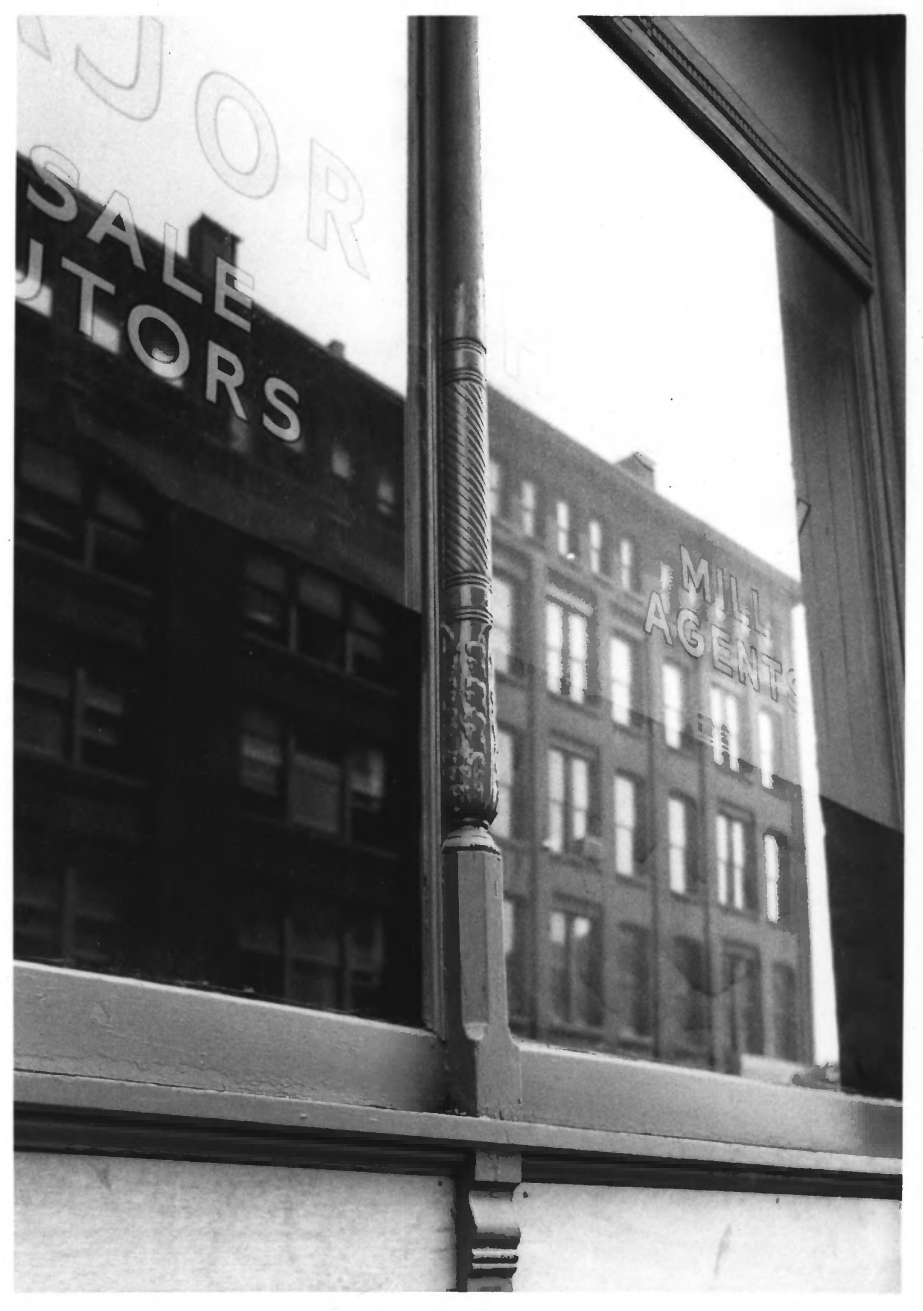
COMMISSION FOR HISTORICAL AND
ARCHITECTURAL PRESERVATION

VIEW LOOKING SOUTHEAST

~~22/32~~ 19/32

MAJOR
SALE
AGENTS

MILL
AGENTS



LOFT DISTRICT (NORTH)

BALTIMORE (CITY) MARYLAND

CHESAPEAKE SHIRT BUILDING - COLUMN DETAIL

409-411 WEST REDWOOD STREET

FRED B. SHOKEN

JULY 1984

COMMISSION FOR HISTORICAL AND

ARCHITECTURAL PRESERVATION

VIEW LOOKING SOUTH

~~20/32~~ 20/32

LOFT DISTRICT (NORTH)

BALTIMORE (CITY), MARYLAND

SCHAEFFER OF KEIDEL BUILDING

405-407 WEST REDWOOD STREET

FRED B. SLOKEN

JULY 1984

COMMISSION FOR HISTORICAL AND
ARCHITECTURAL PRESERVATION

VIEW LOOKING SOUTH

~~25/32~~ 2/32



LOFT DISTRICT (NORTH)

BALTIMORE (CITY), MARYLAND

400 BLOCK WEST REDWOOD STREET (SOUTH SIDE)

FRED B. SHOKEN

JULY 1984

COMMISSION FOR HISTORICAL AND
ARCHITECTURAL PRESERVATION

VIEW LOOKING WEST

~~20/32~~ 22/32



LOFT DISTRICT (NORTH)
BALTIMORE (CITY), MARYLAND
TYLER BAKERY BUILDING
412-20 WEST REDWOOD STREET
FRED B. SHOKEN.

JULY 1984
COMMISSION FOR HISTORICAL AND
ARCHITECTURAL PRESERVATION
VIEW LOOKING NORTHEAST

~~27/32~~ 23/32



LOFT DISTRICT (NORTH) - BORDERS OF DISTRICT
BALTIMORE (CITY), MARYLAND

404-410 WEST REDWOOD STREET

FRED B. SHOKEN

JULY 1934

COMMISSION FOR HISTORICAL AND
ARCHITECTURAL PRESERVATION

VIEW LOOKING NORTHEAST

~~20/32~~ 24/32



LOFT DISTRICT (NORTH)

BALTIMORE (CITY), MARYLAND

CLASSIC BUILDING

10-14 EUTAW STREET

FRED B. SHOREN

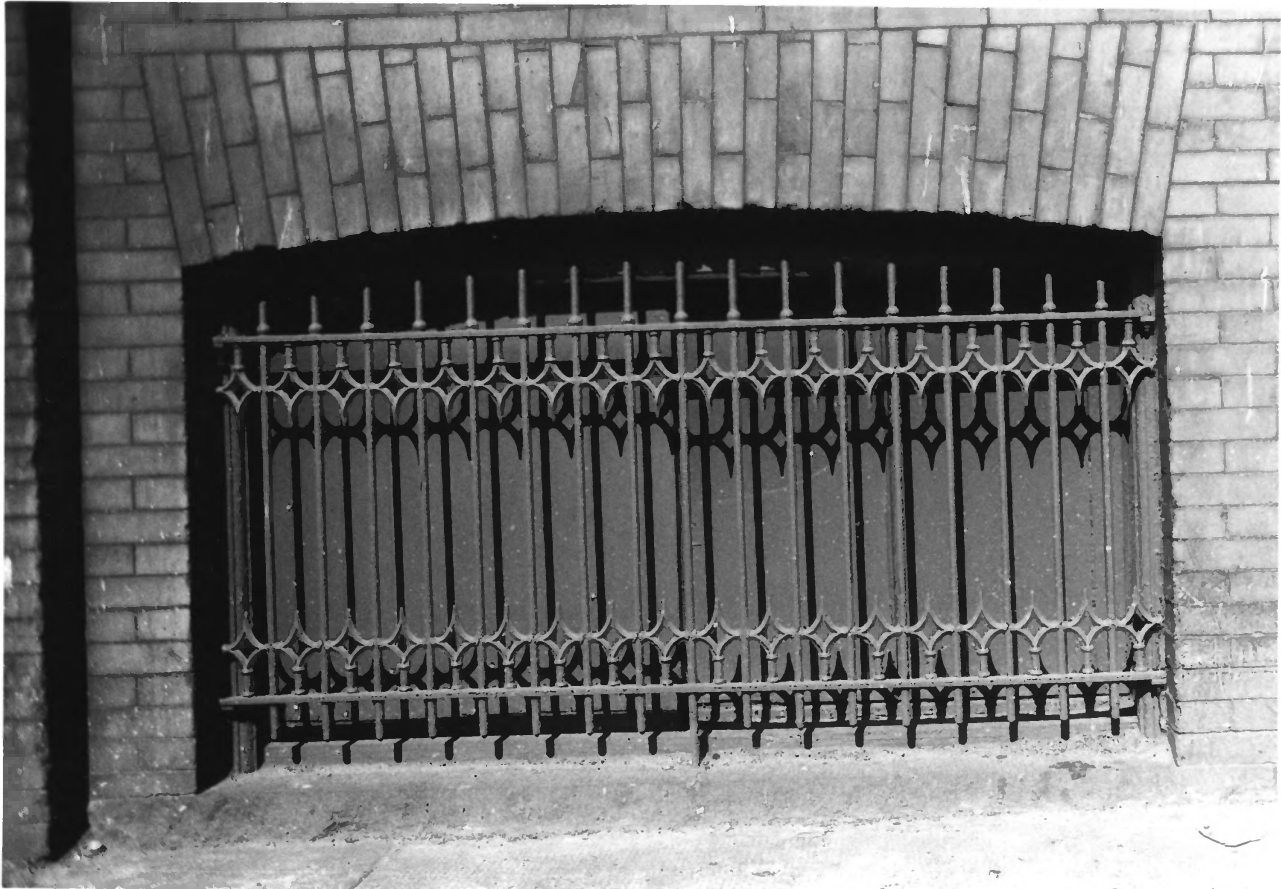
JULY 1984

COMMISSION FOR HISTORICAL AND

ARCHITECTURAL PRESERVATION

VIEW LOOKING SOUTHWEST

~~27/32~~ 25/32



HOFT DISTRICT (NORTH)

BALTIMORE (CITY), MARYLAND

CLASSIC BUILDING GRILL DETAIL - ~~10-11~~

10-14 SOUTH EUTAW STREET

FRED B. SHOKEN

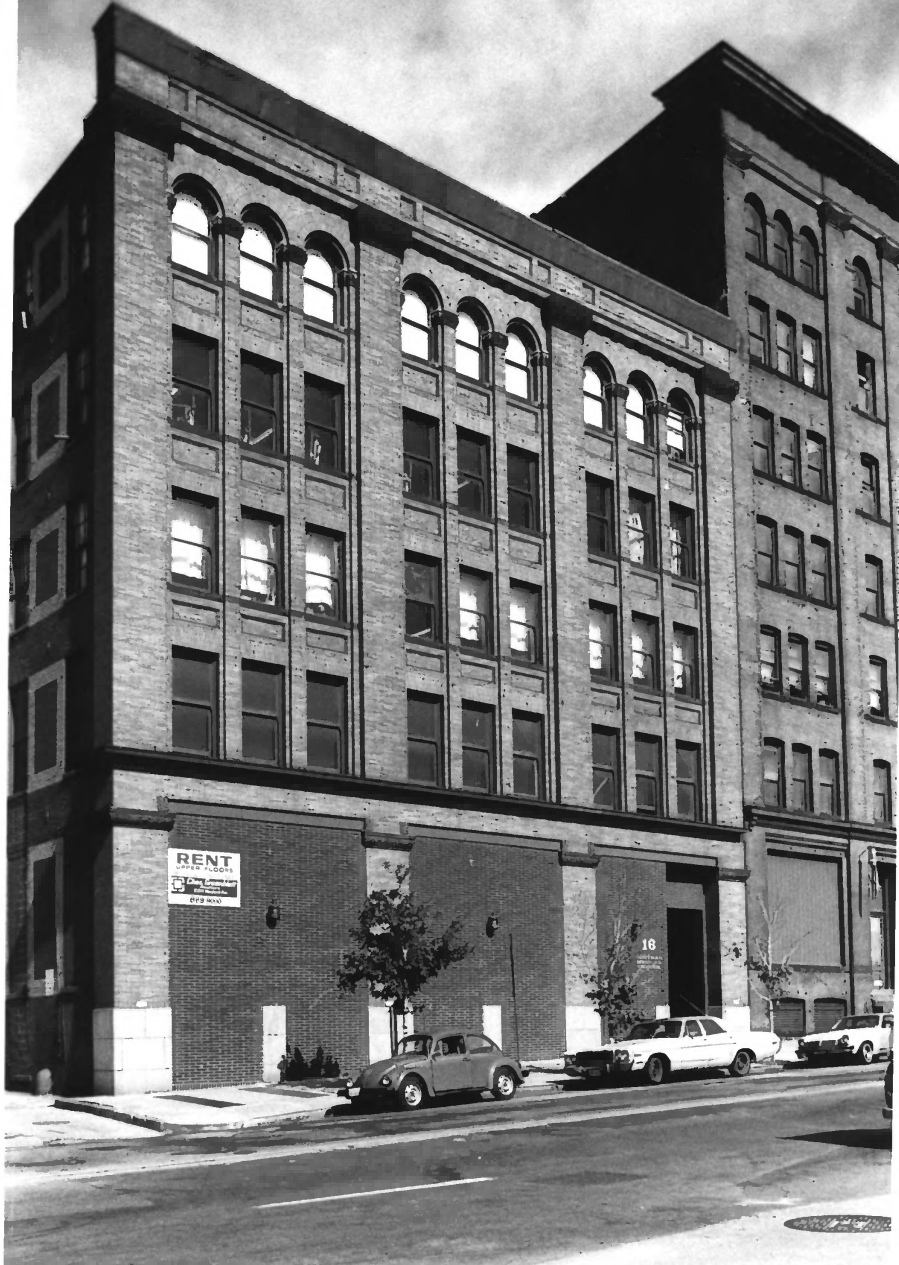
JULY 1984

COMMISSION FOR HISTORICAL AND

ARCHITECTURAL PRESERVATION

VIEW LOOKING WEST

26/32



RENT

UPPER FLOORS

Chas. Lawrence
1000 Broadway
NEW YORK 10003

18

LOFT DISTRICT (NORTH)
BALTIMORE (CITY), MARYLAND
HAMBURGER BROTHERS BUILDING
16-20 SOUTH EUTAW STREET
FRED B. SHOKEN

JULY 1984

COMMISSION FOR HISTORICAL AND
ARCHITECTURAL PRESERVATION
VIEW LOOKING WEST

~~15/83~~

27/32



LOFT DISTRICT (NORTH)
BALTIMORE (CITY), MARYLAND
WATER TANK ON MARLBORO BUILDING
410-12 WEST LOMBARD STREET
FRED B. SHOKEN

JULY 1984

COMMISSION FOR HISTORICAL AND
ARCHITECTURAL PRESERVATION

VIEW LOOKING SOUTHWEST

28/32



LOFT DISTRICT (NORTH) - BORDERS OF DISTRICT
BALTIMORE (CITY), MARYLAND

"HOTEL ROW" SOUTHSIDE OF LOMBARD STREET FROM
PALA STREET

FRED B. SHOKEN

JULY 1984

COMMISSION FOR HISTORICAL AND ARCHITECTURAL
PRESERVATION

VIEW LOOKING SOUTHEAST

29/32

LOFT DISTRICT (NORTH) - BORDERS OF DISTRICT
BALTIMORE (CITY), MARYLAND
400-402 W. COMBARD ST. / SIDE OF 36 S. EUNAN ST.

FRED B. SUDKEN

JULY 1984

COMMISSION FOR HISTORICAL AND ARCHITECTURAL
PRESERVATION

VIEW LOOKING NORTHEAST

30/32



PARK

PAY HERE

PARS PARKING CENTER

PLUMBING & HEATING CENTER

PLUMBING & HEATING CENTER

LOFT DISTRICT (NORTH)

BALTIMORE (CITY), MARYLAND

ABELL BUILDING

329-335 WEST BALTIMORE STREET

FRED B. SHOKEN

JULY 1984

COMMISSION FOR HISTORICAL AND

ARCHITECTURAL PRESERVATION

VIEW LOOKING EAST

34/32



THE UNIVERSITY OF CHICAGO
LIBRARY

LOFT DISTRICT (NORTH)

BALTIMORE (CITY) MARYLAND

ABELL BUILDING DETAIL OF CAST IRON FRONT

329-335 WEST BALTIMORE STREET

FRED B. SHOKEN

JULY 1984

COMMISSION FOR HISTORICAL AND
ARCHITECTURAL PRESERVATION

VIEW LOOKING EAST

32/32