



1. Douglas Sonoran Historic District
2. Douglas, Cochise County, AZ
3. Doug Kupe1
4. April 1987
5. AZ SHPO
6. Streetscape of west side H Ave.
(eastern district boundary) from north
edge of district, facing south
7. Photo 1



1. Douglas Sonoran Historic District
2. Douglas, Cochise County, AZ
3. Doug Kupel
4. April 1987
5. AZ SHPO
6. Streetscape of west side H Ave.
(eastern district boundary) from
south edge of district, facing north
7. Photo 2



1. Douglas Sonoran Historic District
2. Douglas, Cochise County, AZ
3. Doug Kupel
4. April 1987
5. AZ SHPO
6. Streetscape of north side Green (6th)
St., facing northeast
7. Photo 3



1. Douglas Sonoran Historic District
2. Douglas, Cochise County, AZ
3. Doug Kupel
4. April 1987
5. AZ SHPO
6. Streetscape of north side Green (6th)
St., facing northwest
7. Photo 4



1. Douglas Sonoran Historic District
2. Douglas, Cochise County, AZ
3. Doug Kupel
4. April 1987
5. AZ SHPO
6. Streetscape of south side Green (6th)
St., facing southeast
7. Photo 5



1. Douglas Sonoran Historic District
2. Douglas, Cochise County, AZ
3. Doug Kupel
4. April 1987
5. AZ SHPO
6. Streetscape of south side Green (6th)
St., facing southwest
7. Photo 6



1. Douglas Sonoran Historic District
2. Douglas, Cochise County, AZ
3. Doug Kupe1
4. April 1987
5. AZ SHPO
6. Streetscape of west side H Ave. (eastern district boundary) from south edge of district, facing south toward district boundary and showing nonhistoric residential housing beyond district boundary
7. Photo 7



1. Douglas Sonoran Historic District
2. Douglas, Cochise County, AZ
3. Doug Kupeł
4. April 1987
5. AZ SHPO
6. Streetscape of west side H Ave., facing west toward west district boundary and showing nonhistoric infill construction beyond district boundary
7. Photo 8



1. Douglas Sonoran Historic District
2. Douglas, Cochise County, AZ
3. Doug Kupel
4. April 1987
5. AZ SHPO
6. Streetscape of west side H Ave.,
facing southwest
7. Photo 9

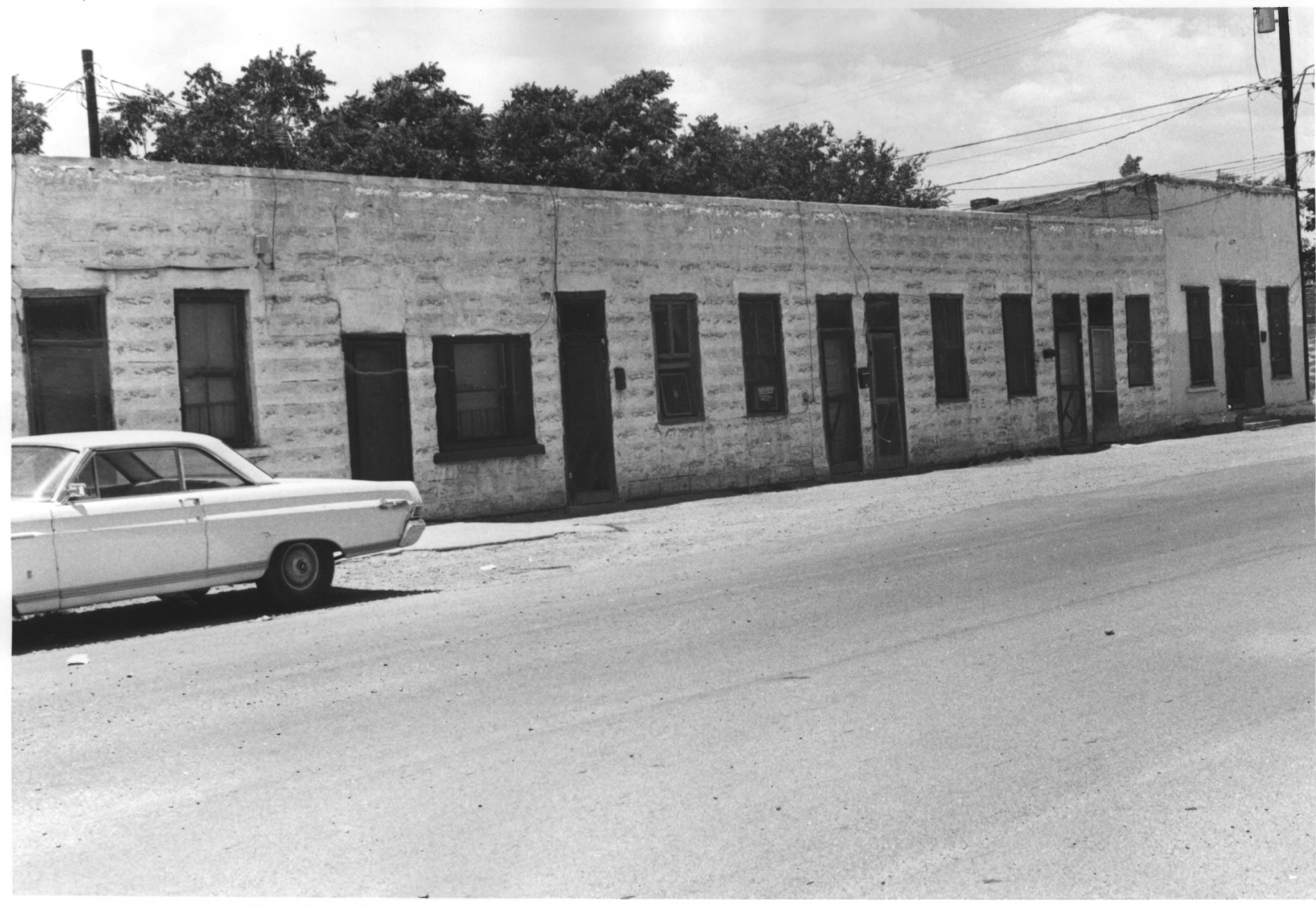


H. AVE. GROCERY

1. Douglas Sonoran Historic District
2. Douglas, Cochise County, AZ
3. Doug Kupeł
4. April 1987
5. AZ SHPO
6. Streetscape of north side 7th St.,
facing northwest
7. Photo 10

AUG

3 1987



1. Douglas Sonoran Historic District
2. Douglas, Cochise County, Arizona
3. Linda Laird
4. June, 1985
5. Arizona SHPO
6. Eastern facade of 702-722 H Ave., typical of Sonoran style cast gypsum block row-house. Camera pointing northwest.
7. Roll EE, Frame 3.

6/18/86

Streetscape view has not changed appreciably since photo was taken two years ago. Photo accurately depicts current appearance/condition.



1. Douglas Sonoran Historic District
2. Douglas, Cochise County, Arizona
3. Linda Laird
4. June, 1985
5. Arizona SHPO
6. Streetscape view of the 600 block of H Ave. Camera pointing south
7. Roll EE, Frame 14

6/18/85

Streetscape view has not changed appreciably since photo was taken two years ago. Photo accurately depicts current appearance/condition.



1. Douglas Sonoran Historic District
2. Douglas, Cochise County, Arizona
3. Linda Laird
4. June, 1985
5. Arizona SHPO
6. Streetscape view along 700 block of H Ave., showing typical flush-front facades common in the district. Camera pointing north.
7. Roll EE, Frame 15

6/10/85

Streetscape view has not changed appreciably since photo was taken two years ago. Photo accurately depicts current appearance/condition.