



Talahi Improvements

Knoxville, Knox County, Tennessee

PHOTO BY: Jack Dempster

DATE: March 1978

NEGS: Jack Dempster

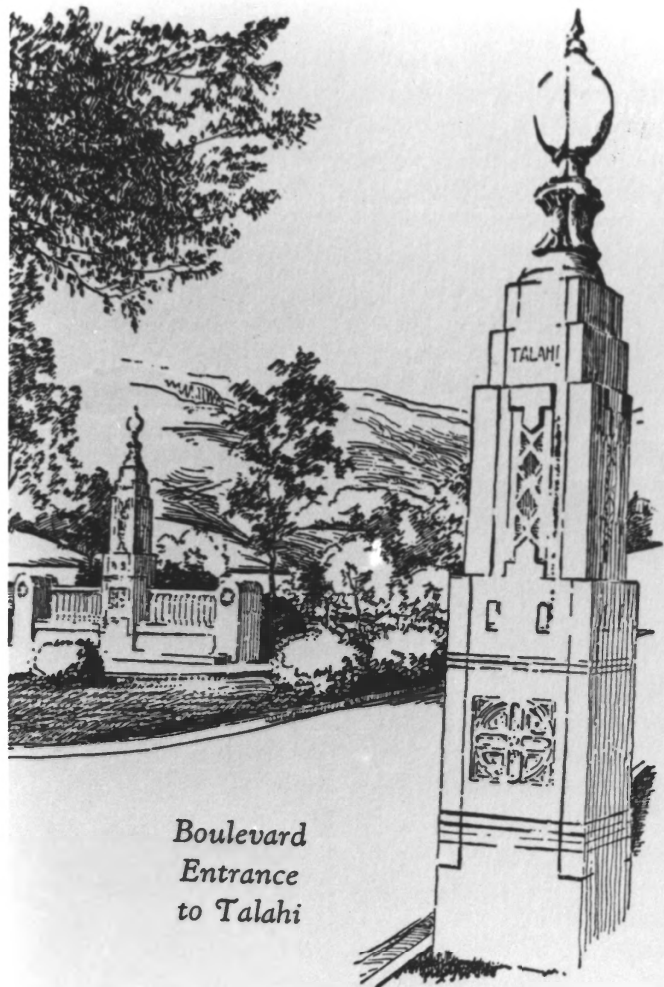
Knoxville, Tennessee

*DOE*  
DEC 26 1979

OCT 18 1979

The pylons at the intersection of Iskagna Drive and Keowee Drive, facing northeast.

No. 1 of 17



Boulevard  
Entrance  
to Talahi

So in the TALAH! of today this lovely legend is embodied as a part of the ornamental scheme. It furnished the basic idea which is carried out in designing the entrance piers. Topping these piers is the form of a spider, conventionalized according to an Indian design, with its feet on the earth holding aloft the fire it has received.

These Cherokees, then, were the first who came to know the joy of life in TALAH!. Today a great city is built close by. Near at hand is a busy artery of traffic to and from that city, ten minutes away. Across the smoothly flowing river lies the University Farm—a model with its well-kept fields and pastures and its fat cattle.



But in TALAH!'s virgin forest, as in years long past, nature rules supreme. Its charm has not been subject to ruinous exploitation. On the contrary the creators of this community have preserved for all time its natural beauty, adding to it only splendid adaptations of the landscape architect.

DOE

DEC 26 1979

Talahi Improvements

Knoxville, Knox County, Tennessee

PHOTO BY: Jack Dempster

DATE: ~~March~~ 1978

OCT 18 1979

NEGS: Jack Dempster

Knoxville, Tennessee

Entrance pylon and median bench, showing original light globes, from a 1929 promotional brochure.

No. 2 of 17



TALAH



NO PARKING

1955

Talahi Improvements

Knoxville, Knox County, Tennessee

PHOTO BY: Jack Dempster

DATE: March 1978

NEG: Jack Dempster

Knoxville, Tennessee

Median bench, facing south

No. 3 of 17

**OCT 18 1979**

*DOE*  
DEC 26 1979

TALAHKI



Talahi Improvements

Knoxville, Knox County, Tennessee

PHOTO BY: Jack Dempster

DATE: March 1978

NEG: Jack Dempster

Knoxville, Tennessee

Detail of median bench

No. 4 of 17

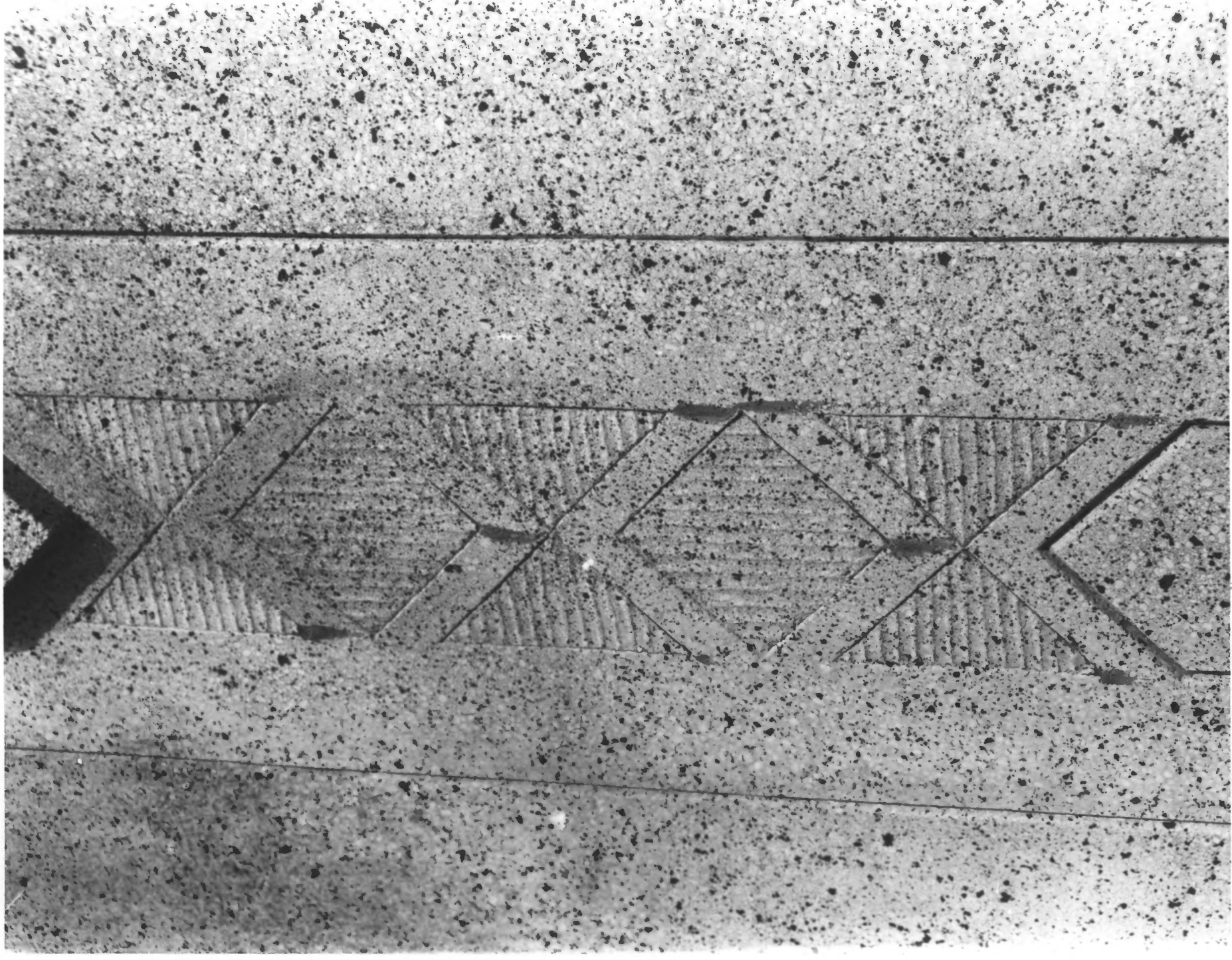
DEC

DOE

26 1979

OCT 18 1979





Talahi Improvements

Knoxville, Knox County, Tennessee

PHOTO BY: Jack Dempster

DATE: March 1978

NEG: Jack Dempster

Knoxville, Tennessee

Detail of median bench

No. 5 of 17

DEC 26 1979  
DOE  
OCT 18 1979



Talahi Improvements

DEC 26 1979

DOE

Knoxville, Knox County, Tennessee

PHOTO BY: Jack Dempster

DATE: March 1978

NEG: Jack Dempster

OCT 18 1979

Knoxville, Tennessee

Sunhouse fountain, facing north

No. 6 of 17

e frogs the playing streams, in graceful arcs ascending,

o hold them,

st as arched

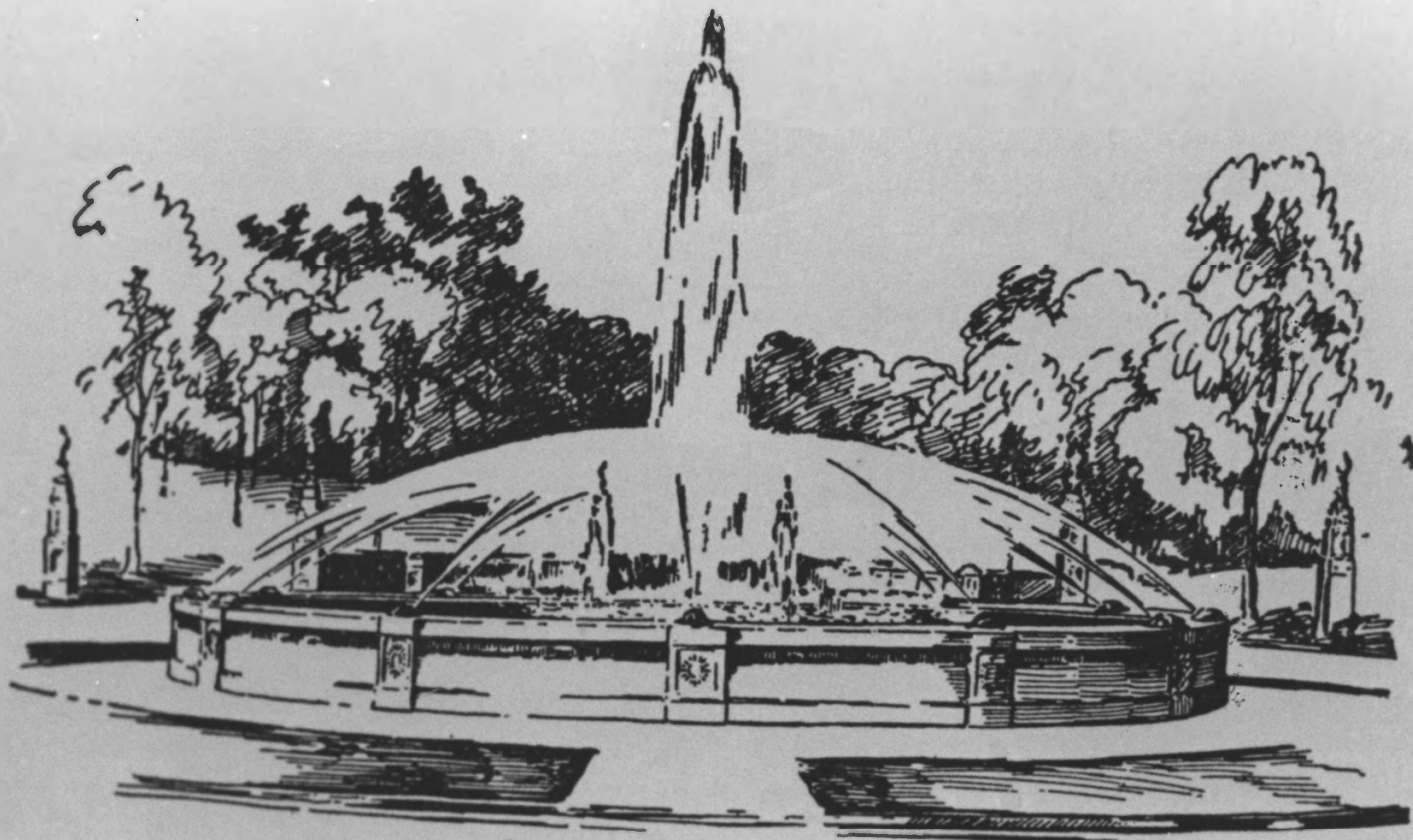
pole which

herokee the

stone work,

re the box-

ding greens.



*Sunhouse Fountain*



Talahi Improvements

Knoxville, Knox County, Tennessee

PHOTO BY: Jack Dempster

DATE: March 1978

NEG: Jack Dempster

Knoxville, Tennessee

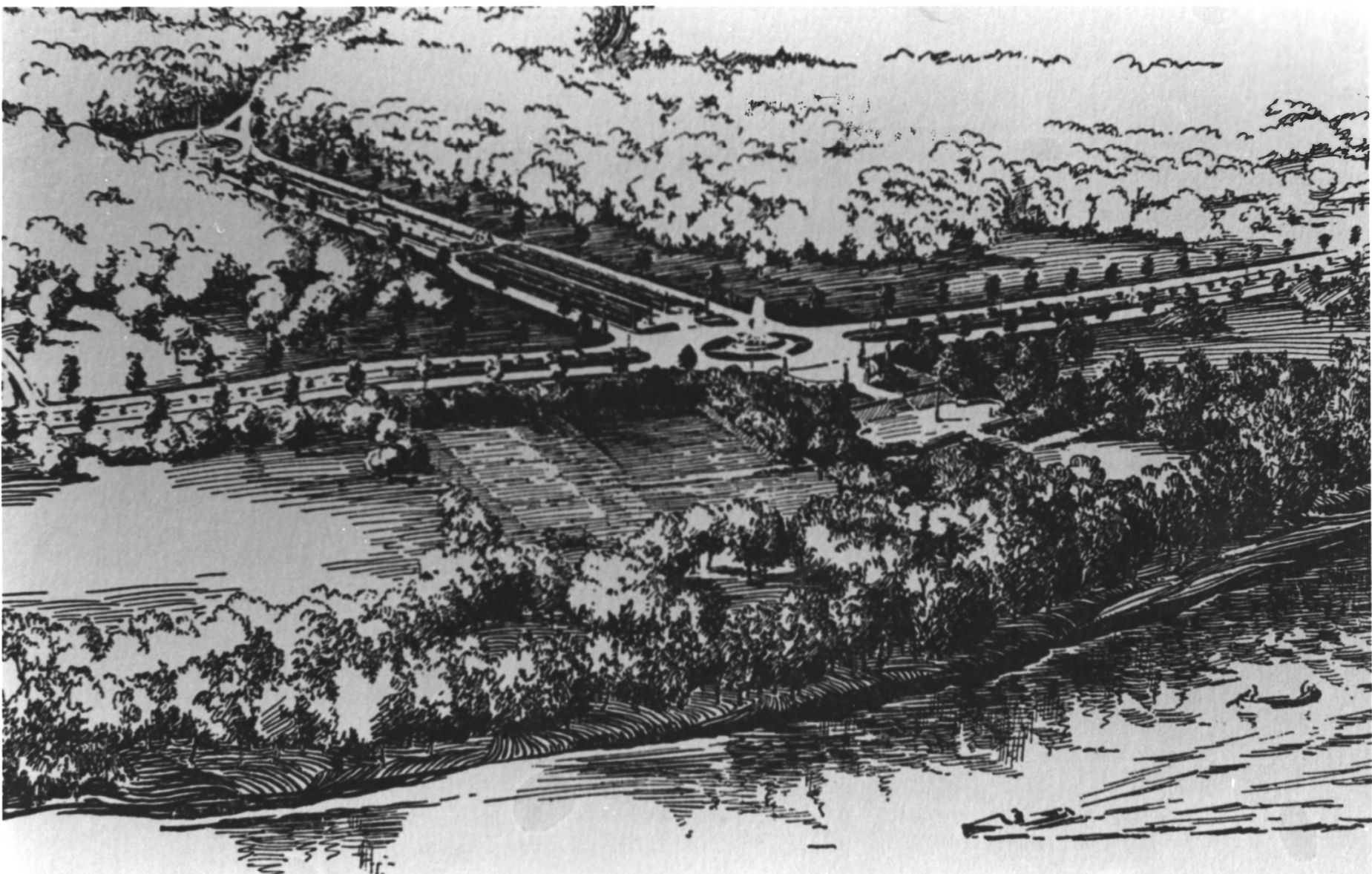
Sunhouse fountain, from a 1929 promotional  
brochure

No. 7 of 17

WDE

26

OCT 18 1979



*View of Talahi Gardens from the River*

# Talahi Improvements

Knoxville, Knox County, Tennessee

PHOTO BY: Jack Dempster

DATE: March 1978

NEG: Jack Dempster

**OCT 18 1979**

Knoxville, Tennessee

Aerial view, glamorized historical  
appearance, from a 1929 promotional  
brochure

No. 8 of 17

*DOE*  
DEC 26 1979





Map of  
**TALAH I**  
THE MUTUAL DEVELOPMENT COMPANY  
Creator and Developer

Talahi Improvements

Knoxville, Knox County, Tennessee

PHOTO BY: Jack Dempster

DATE: March 1978

NEG: Jack Dempster

Knoxville, Tennessee

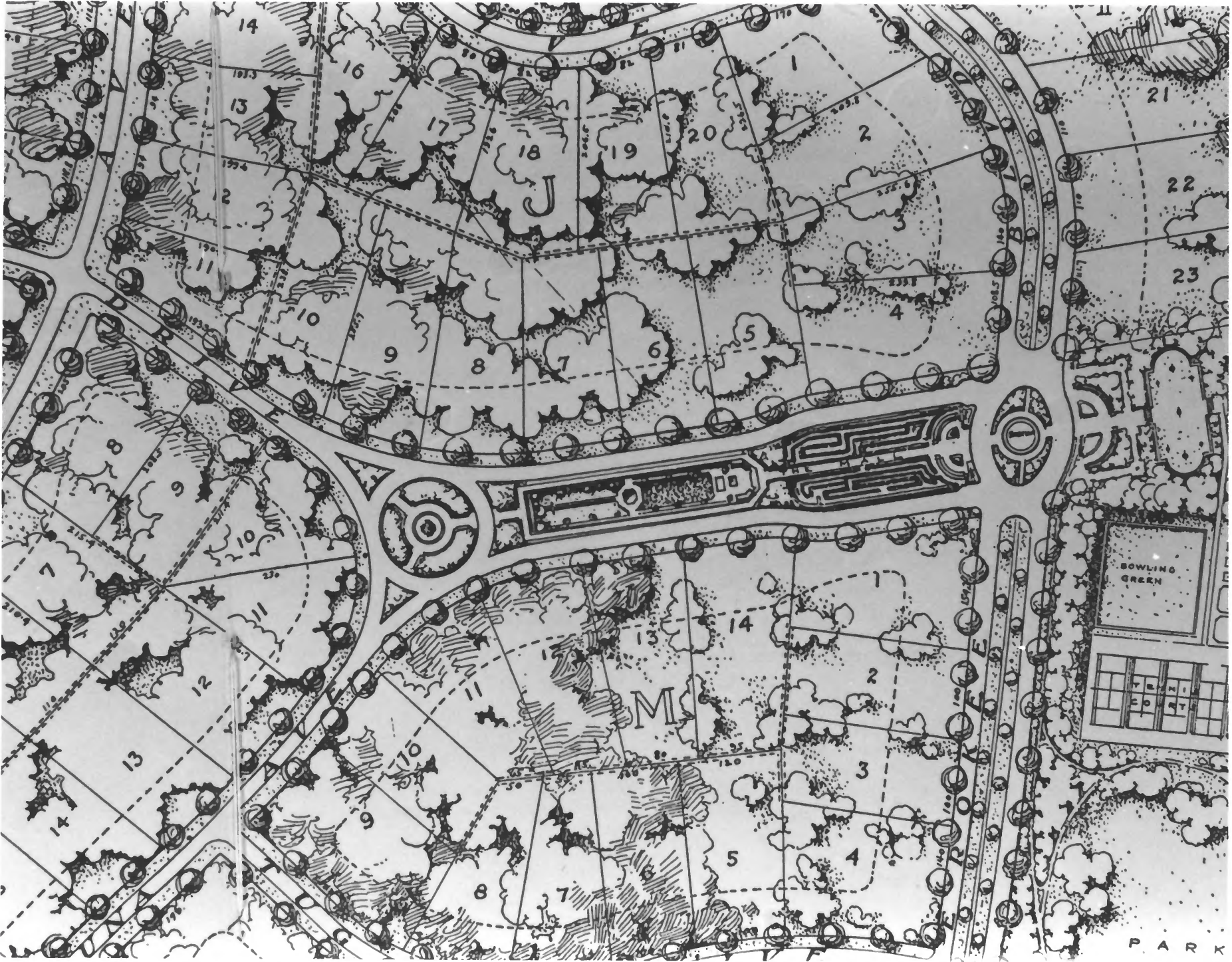
Map, from 1929 promotional brochures

No. 9 of 17

00E

26

OCT 18 1979



*ACE*

Talahi Improvements

DEC 26 1979

Knoxville, Knox County, Tennessee

PHOTO BY: Jack Dempster

DATE: March 1978

NEG: Jack Dempster

OCT 18 1979

Knoxville, Tennessee

Map, detail of Papoose Park and environs,  
from 1929 promotional brochure

No. 10 of 17



Talahi Improvements

Knoxville, Knox County, Tennessee

*DOE*  
DEC 26 1979

PHOTO BY: Jack Dempster

DATE: March 1978

**OCT 18 1979**

NEG: Jack Dempster

Knoxville, Tennessee

Light standard; facing northeast; this shows modern replacement for original globe.

No. 11 of 17



Talahi Improvements

Knoxville, Knox County, Tennessee

PHOTO BY: Jack Dempster

DATE: March 1978

NEG: Jack Dempster

Knoxville, Tennessee

Panther fountain, facing northwest

No. 12 of 17

DOE

DEC 26 1979

OCT 18 1979





Talahi Improvements

Knoxville, Knox County, Tennessee

PHOTO BY: Jack Dempster

DATE: March 1978

NEG: Jack Dempster

Knoxville, Tennessee

Papoose Park, detail of fence

No. 13 of 17

*POE*  
DEC 26 1979

OCT 18 1979



Talahi Improvements

Knoxville, Knox County, Tennessee

DOE

PHOTO BY: Jack Dempster

DATE: March 1978

NEG: Jack Dempster

Knoxville, Tennessee

OCT 18 1979

Papoose Park, facing east

No. 14 of 17



DOE

Talahi Improvements

Knoxville, Knox County, Tennessee

DEC 26 1979

PHOTO BY: Jack Dempster

DATE: March 1978

OCT 18 1979

NEG: Jack Dempster

Knoxville, Tennessee

Papoose Park, detail of summer house

No. 15 of 17



Talahi Improvements

Knoxville, Knox County, Tennessee

PHOTO BY: Jack Dempster

DATE: March 1978

NEG: Jack Dempster

Knoxville, Tennessee

Curved benches, facing northeast

No. 16 of 17

*Doc*  
DEC 26 1978  
**OCT 18 1979**





Talahi Improvements

Knoxville, Knox County, Tennessee

PHOTO BY: Jack Dempster

DATE: March 1978

NEG: Jack Dempster

Knoxville, Tennessee

Median bench, facing east

No. 17 of 17

**OCT 18 1979**

*DOE*

DEC 26 1979