



45-6A

NATIONAL REGISTER OF HISTORIC PLACES

PROPERTY PHOTOGRAPH FORM

(Type all entries - attach to or enclose with photograph)

STATE	
GEORGIA	
COUNTY	
BIBB	
FOR NPS USE ONLY	
ENTRY NUMBER	DATE
	FEB 1 1972

SEE INSTRUCTIONS

1. NAME

COMMON: Randolph-Whittle House
AND/OR HISTORIC: Randolph-Whittle-Davis-Smith House

2. LOCATION

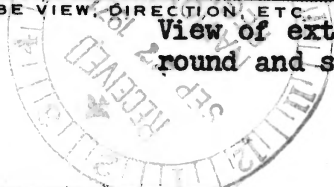
STREET AND NUMBER:
1231 Jefferson Terrace
CITY OR TOWN:
Macon
STATE: Georgia CODE 13 COUNTY: Bibb CODE 021

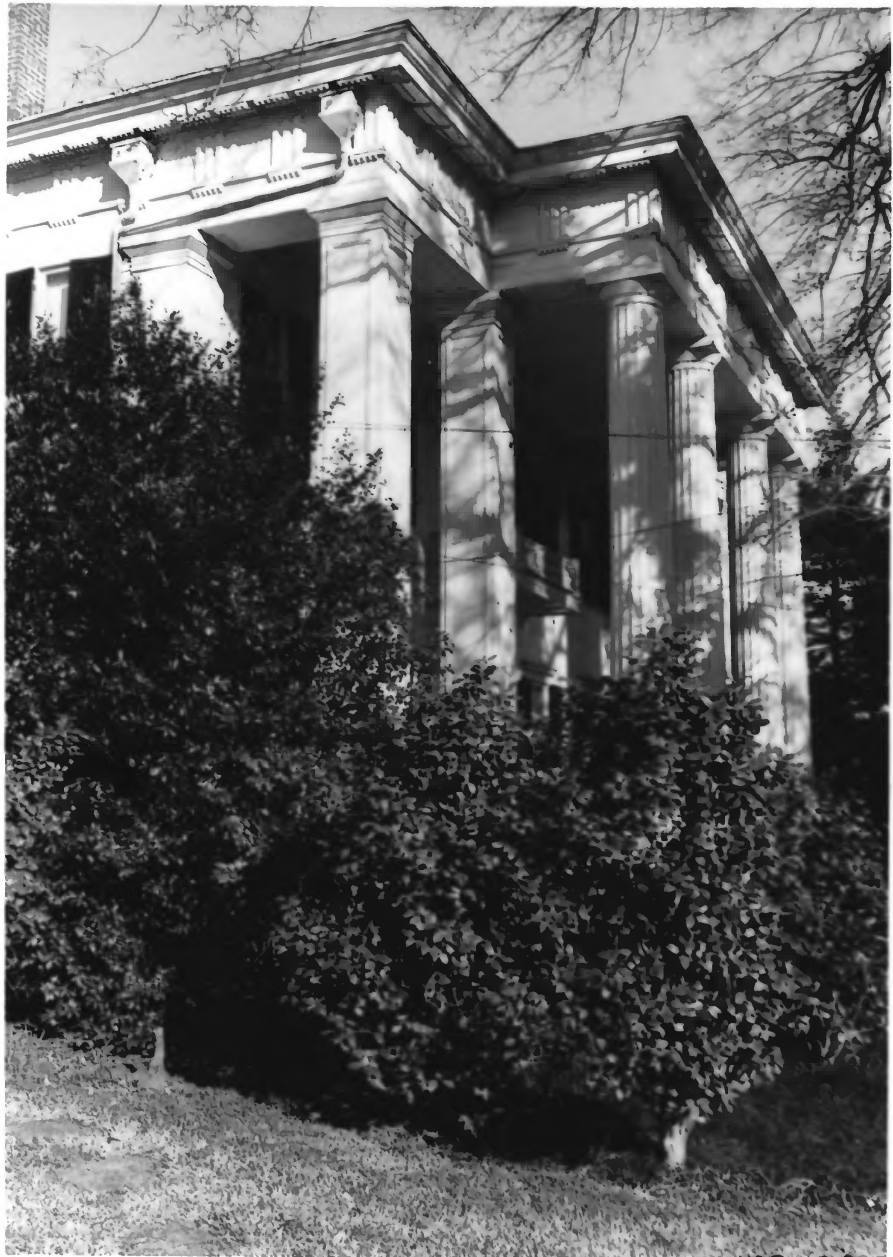
3. PHOTO REFERENCE

PHOTO CREDIT: John J. McKay, Jr.
DATE OF PHOTO: March, 1971
NEGATIVE FILED AT: Middle Georgia Historical Society, Inc.
c/o Macon Coliseum
Macon, Georgia 31201 Negative #45-6A

4. IDENTIFICATION

DESCRIBE VIEW, DIRECTION, ETC.
View of exterior of house taken from side angle showing round and square columns and elaborate cornice.





45-7A

UNITED STATES DEPARTMENT OF THE INTERIOR
NATIONAL PARK SERVICE

NATIONAL REGISTER OF HISTORIC PLACES
PROPERTY PHOTOGRAPH FORM

(Type all entries - attach to or enclose with photograph)

STATE GEORGIA	
COUNTY BIBB	
FOR NPS USE ONLY	
ENTRY NUMBER	DATE
	FEB 1 1972

1. NAME

COMMON: **Randolph-Whittle House**
AND/OR HISTORIC: **Randolph-Whittle-Davis-Smith House**

2. LOCATION

STREET AND NUMBER: **1231 Jefferson Terrace**
CITY OR TOWN: **Macon**

STATE: **Georgia**

CODE	COUNTY:	CODE
13	Bibb	021

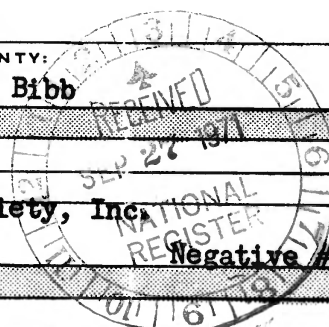
3. PHOTO REFERENCE

PHOTO CREDIT: **John J. McKay, Jr.**
DATE OF PHOTO: **March, 1971**
NEGATIVE FILED AT: **Middle Georgia Historical Society, Inc.
c/o Macon Coliseum
Macon, Georgia 31201**

4. IDENTIFICATION

DESCRIBE VIEW, DIRECTION, ETC.

View of exterior of house taken from side angle; shows detail of dentil work and of columns.



SEE INSTRUCTIONS



D-19

UNITED STATES DEPARTMENT OF THE INTERIOR
NATIONAL PARK SERVICE

NATIONAL REGISTER OF HISTORIC PLACES

PROPERTY PHOTOGRAPH FORM

(Type all entries - attach to or enclose with photograph)

STATE GEORGIA	
COUNTY BIBB	
FOR NPS USE ONLY	
ENTRY NUMBER	DATE
	FEB 1 1972

1. NAME

COMMON: **Randolph-Whittle House**
AND/OR HISTORIC: **Randolph-Whittle-Davis-Smith House**

2. LOCATION

STREET AND NUMBER: **1231 Jefferson Terrace**
CITY OR TOWN: **Macon**
STATE: **Georgia**

CODE	COUNTY:	CODE
13	Bibb	021

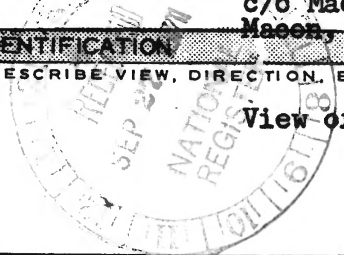
3. PHOTO REFERENCE

PHOTO CREDIT: **John J. McKay, Jr.**
DATE OF PHOTO: **March, 1971**
NEGATIVE FILED AT: **Middle Georgia Historical Society, Inc.
c/o Macon Coliseum
Macon, Georgia 31201** Negative # **D-19**

4. IDENTIFICATION

DESCRIBE VIEW, DIRECTION, ETC.
View of front of house taken from Jefferson Terrace level

SEE INSTRUCTIONS





45-12A

NATIONAL REGISTER OF HISTORIC PLACES
PROPERTY PHOTOGRAPH FORM

(Type all entries - attach to or enclose with photograph)

STATE GEORGIA	
COUNTY BIBB	
FOR NPS USE ONLY	
ENTRY NUMBER	DATE
	FEB 1 1972

1. NAME

COMMON: **Randolph-Whittle House**
AND/OR HISTORIC: **Randolph-Whittle-Davis-Smith House**

2. LOCATION

STREET AND NUMBER:
1231 Jefferson Terrace

CITY OR TOWN:
Macon

STATE: **Georgia**

CODE	COUNTY:	CODE
13	Bibb	021

3. PHOTO REFERENCE

PHOTO CREDIT: **John J. McKay, Jr.**

DATE OF PHOTO: **March, 1971**

NEGATIVE FILED AT: **Middle Georgia Historical Society, Inc.
c/o Macon Coliseum
Macon, Georgia 31201**

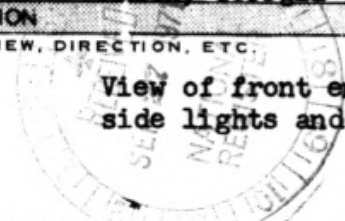
Negative #45-12A

4. IDENTIFICATION

DESCRIBE VIEW, DIRECTION, ETC:

View of front entrance to house showing front door with side lights and transom, shuttered windows.

SEE INSTRUCTIONS





45-9A

UNITED STATES DEPARTMENT OF THE INTERIOR
NATIONAL PARK SERVICE

NATIONAL REGISTER OF HISTORIC PLACES

PROPERTY PHOTOGRAPH FORM

(Type all entries - attach to or enclose with photograph)

STATE GEORGIA	
COUNTY BIBB	
FOR NPS USE ONLY	
ENTRY NUMBER	DATE
	FEB 1 1972

SEE INSTRUCTIONS

1. NAME

COMMON: **Randolph-Whittle House**
AND/OR HISTORIC: **Randolph-Whittle-Davis-Smith House**

2. LOCATION

STREET AND NUMBER:
1231 Jefferson Terrace

CITY OR TOWN:
Macon

STATE:
Georgia

CODE	COUNTY:	CODE
13	Bibb	021

3. PHOTO REFERENCE

PHOTO CREDIT: **John J. McKay, Jr.**
DATE OF PHOTO: **March, 1971**
NEGATIVE FILED AT: **Middle Georgia Historical Society, Inc.
c/o Macon Coliseum
Macon, Georgia 31201**
Negative #45-9A

4. IDENTIFICATION

DESCRIBE VIEW, DIRECTION, ETC.
View of rear of house.





45-11A

UNITED STATES DEPARTMENT OF THE INTERIOR
NATIONAL PARK SERVICE

NATIONAL REGISTER OF HISTORIC PLACES
PROPERTY PHOTOGRAPH FORM

(Type all entries - attach to or enclose with photograph)

STATE GEORGIA	
COUNTY BIBB	
FOR NPS USE ONLY	
ENTRY NUMBER	DATE
FFB 1	1972

1. NAME

COMMON: **Randolph-Whittle House**
AND/OR HISTORIC: **Randolph-Whittle-Davis-Smith House**

2. LOCATION

STREET AND NUMBER:
1231 Jefferson Terrace
CITY OR TOWN:
Macon

STATE:	CODE	COUNTY:	CODE
Georgia	13	Bibb	021

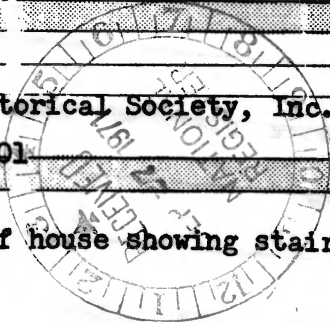
3. PHOTO REFERENCE

PHOTO CREDIT: **John J. McKay, Jr.**
DATE OF PHOTO: **March, 1971**
NEGATIVE FILED AT: **Middle Georgia Historical Society, Inc.
c/o Macon Coliseum
Macon, Georgia 31201** **Negative #45-11A**

4. IDENTIFICATION

DESCRIBE VIEW, DIRECTION, ETC.
**View of interior of house showing stair with wainscot,
arched doorways.**

SEE INSTRUCTIONS





45-10A

NATIONAL REGISTER OF HISTORIC PLACES
PROPERTY PHOTOGRAPH FORM

(Type all entries - attach to or enclose with photograph)

STATE GEORGIA	
COUNTY	
BTBB	
FOR NPS USE ONLY	
ENTRY NUMBER	DATE
	FEB 1 1972

1. NAME

COMMON: **Randolph-Whittle House**
AND/OR HISTORIC: **Randolph-Whittle-Davis-Smith House**

2. LOCATION

STREET AND NUMBER:
1231 Jefferson Terrace

CITY OR TOWN:
Macon

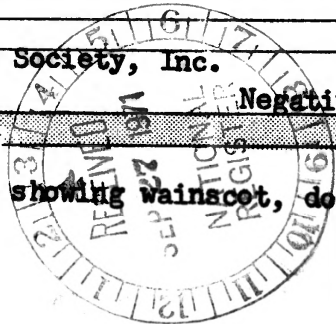
STATE:	Georgia	CODE	COUNTY:	Bibb	CODE
		13			021

3. PHOTO REFERENCE

PHOTO CREDIT: **John J. McKay, Jr.**
DATE OF PHOTO: **March, 1971**
NEGATIVE FILED AT: **Middle Georgia Historical Society, Inc.
c/o Macon Coliseum
Macon, Georgia 31201** **Negative #45-10A**

4. IDENTIFICATION

DESCRIBE VIEW, DIRECTION, ETC.
View of interior of house showing wainscot, door moldings, cornices and mantel.



SEE INSTRUCTIONS