



WEIST APARTMENTS  
209 NW 23<sup>rd</sup> AVENUE  
PORTLAND  
MULTNOMAH COUNTY  
OREGON

1 of 6

EAST (FRONT) ELEVATION

SCOT McLEAN PHOTO  
August 1989

2030 SW MAIN STREET  
PORTLAND, OR 97205



ANY

sh  
W7

WEIST APARTMENTS

209 NW 23rd AVENUE

PORTLAND

MULTNOMAH COUNTY

OREGON

2026

EAST (FRONT) ELEVATION

SCOT MCLEAN PHOTO

AUGUST 1989

2030 SW MAIN STREET

PORTLAND, OR 97205



WEIST APARTMENTS

209 NW 23<sup>RD</sup> AVENUE  
PORTLAND

MULTNOMAH COUNTY  
OREGON

3 of 6

STAIRHALL INTERIOR  
SLOT MCLEAN PHOTO

August 1989

2030 SW MAIN STREET  
PORTLAND, OR 97205



WEIST APARTMENTS

209 NW 2300 AVENUE

PORTLAND

MULTNOMAH COUNTY

OREGON

H of G

STAIRWELL

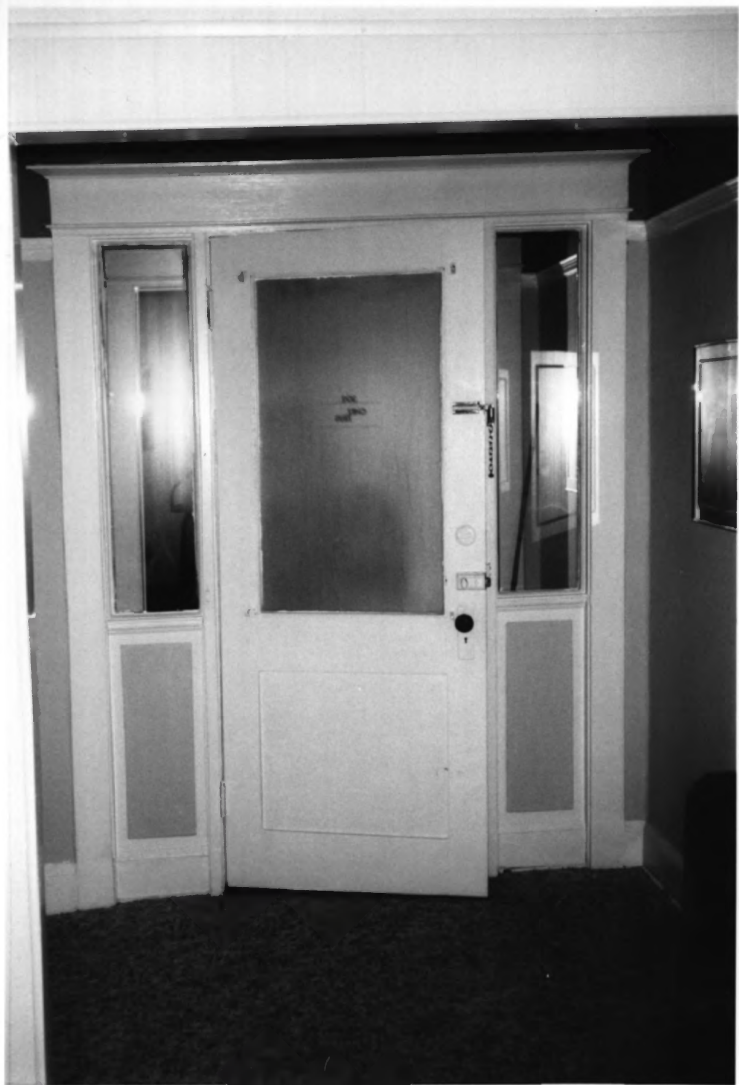
SCOT MCLEAN PHOTO

1989

2030 SW MAW STREET

PORTLAND, OR 97205





WEIST APARTMENTS

204 NW 23<sup>RD</sup> AVENUE

PORTLAND

MULTNOMAH, COUNTY

OREGON

5 of 6

APARTMENT ENTRY

SCOT MCLEAN PHOTO

AUGUST 1989

2030 SW MAIN STREET

PORTLAND, OR 97205



WEIST APARTMENTS

209 NW 23RD AVENUE

PORTLAND

MULTNOMAH COUNTY

OREGON

6 of 6

APARTMENT DINING ROOM

SCOT MCLEAN PHOTO

AUGUST 1989

2030 SW MAIN STREET

PORTLAND, OR 97205



COMPANY

esh

LUMANT

1 OF 11 SUPPLEMENTARY SLIDES

1  
FACADE

WEIST APT,

209 N.W. 23rd

PORTLAND, OREGON

MULTNOMAH COUNTY

8/1/89

SCOT W. MCGAN

2030 S.W. MAIN

PORT. OR. 97205



2 OF 11 SUPPLEMENTARY SERIES A  
WEIST APTS.

3<sup>rd</sup> FLOOR BALCONY  
FACADE BALCONIES.

Portland MULTNOMAH  
COUNTY  
OREGON  
8/1/89

SCOT W. MCLEAN  
2030 SW MAIN  
PORTLAND, OR. 97205





30 of 11

SUPPLEMENTARY SERIES A

WEIST APARTMENT  
INTERIOR FOYER

8/1/89.

PORTLAND

MULTNOMAH COUNTY

OR 97205

SCOT W. McLEAN

2030 SW MAIN

PORTLAND, OR. 97205



40211 SUPPLEMENTARY SANS A  
WEIST APT

STAIRWELL LANDING  
209 NW 23<sup>rd</sup>  
PORTLAND, OR.

8/1/89  
MULTNOMAH  
COUNTY

SCOT W. MCLEAN  
2030 SW MAIN  
PORTLAND, ORE.  
97205



5 OF 11 SUPPLEMENTARY SERIES A

WEIST APT,

INTERIOR <sup>MAIN</sup> STAIRWELL

8/1/89

PORTLAND  
MULTNOMAH  
COUNTY  
OREGON

SCOT W. MCLEAN

2030 SW MAIN

PORTLAND, OR. 97205



4 OF 11 SUPPLEMENTARY SERIES

WEIST APT

209 NW 23<sup>rd</sup>

Portland, Ore.

MULTNOMAH  
COUNTY

Lower Stairwell

8/1/89

Scot W. McLean

2030 SW MAIN

Portland, Ore.

97205





7 OF 11 SUPPLEMENTARY SERIES A  
WEIST APT.

TYPICAL APT. ENTRY

209 NW 23<sup>rd</sup>

PORTLAND, ORE

~~MULTNOMAH~~  
COUNTY

8/1/89

Scot W. McLean

2030 SW MAIN

Portland, Ore. 97205



8 OF 11 SUPPLEMENTARY SERIES A

WEIST APT.

Dining Room

209 NW 23<sup>rd</sup>

PORTLAND, Ore

MULTNOMAH  
COUNTY

8/1/89

SCOT W. McLEAN

2030 SW MAIN

Portland, Ore. 97205



9 OF 11 SUPPLEMENTARY SERIES A

12. WEIST APT.

209 NW 23<sup>rd</sup>

Portland, ORE.

Basement APT. MULTIFAMILY  
COUNTY

8/1/89

SCOT W. McLEAN

2030 SW MAIN

PORTLAND, ORE. 97205



10 OF 11 SUPPLEMENTARY SERVICES A

. WEIST APT.

209 NW 23<sup>rd</sup>

PORTLAND, OR

Dining Room <sup>MULTNOMAH</sup> COUNTY,

8/1/89

SCOT W. McLEAN

2030 SW MAIN

PORTLAND, ORE, 97205





11 OF 11 SUPPLEMENTARY SERIES A

WEIST APT.

209 NW 23<sup>rd</sup>

Portland, Ore.

MULTNOMAH  
COUNTY  
Living Room

8/1/89

SCOTT W. McLEAW

2030 SW MAIN

PORTLAND, ORE 97205



2. WEIST APT.  
209 NW 23<sup>rd</sup>

PORTLAND, MULTNOMAH  
FACILITY EXTERIOR COUNTY,  
OREGON

8/2/89

SUPPLEMENTARY PHOTO SIGNING  
1 OF 5 B

SCOT W. McLEAN  
2030 S.W. MAIN  
PORTLAND, ORE.



6. WEIST APT

ENTRANCE FOYER  
209 NW 23<sup>rd</sup>

FORTWANE, MULTNOMAH COUNTY,  
OREGON

SUPPLEMENTARY PHOTO SERIES-B  
2 OF 5

85 21+00 NNNM-01-294  
JOT W. MLETAO  
2030 S.W. MAIN  
FORTWANE, OR  
97205



3

WEIST APT,

BASEMENT APARTMENT

209 NW 23<sup>rd</sup>

PORTLAND, MULTNOMAH COUNTY

8/1/89

ORACON

SUPPLEMENTARY PHOTO SERIES B  
3 OF 5

SCOT W. McLEAN

2030 SW MAIN

Portland, OR. 97205





A. WEST APT.  
209 NW 23<sup>rd</sup>

PORTLAND, ORE, MULTNOMAH  
COUNTY

MAIN FIRE-PLACE  
BASEMENT

8/1/89

Supplementary photo series B  
4 of 5

SCOT W. McLEAN

2030 SW MAIN

PORTLAND, ORE 97205



8. WEIST APT.

Typical Dining Room

209 NW 23<sup>rd</sup>

Portland, OR.

MULTNOMAH COUNTY

Summary PHOTO SERIES

5 OF 5

SCOT W. MUEAN

2030 SW. MAIN

PORTLAND, OR. 97205