

United States Department of the Interior  
National Park Service

APR 18 1990

National Register of Historic Places  
Registration Form

NATIONAL  
REGISTER

This form is for use in nominating or requesting determinations of eligibility for individual properties or districts. See instructions in *Guidelines for Completing National Register Forms* (National Register Bulletin 16). Complete each item by marking "x" in the appropriate box or by entering the requested information. If an item does not apply to the property being documented, enter "N/A" for "not applicable." For functions, styles, materials, and areas of significance, enter only the categories and subcategories listed in the instructions. For additional space use continuation sheets (Form 10-900a). Type all entries.

1. Name of Property

historic name Monson Center Historic District

other names/site number \_\_\_\_\_

2. Location

street & number Main Street

N/A not for publication

city, town Monson

N/A vicinity

state Massachusetts

code MA

county Hampden

code 013

zip code 01057

3. Classification

Ownership of Property

- private
- public-local
- public-State
- public-Federal

Category of Property

- building(s)
- district
- site
- structure
- object

Number of Resources within Property

Contributing	Noncontributing
<u>5</u>	<u>4</u> buildings
<u>1</u>	<u>0</u> sites
<u>2</u>	<u>0</u> structures
<u>8</u>	<u>4</u> objects
	<u>4</u> Total

Name of related multiple property listing:  
N/A

Number of contributing resources previously listed in the National Register 1

4. State/Federal Agency Certification

As the designated authority under the National Historic Preservation Act of 1966, as amended, I hereby certify that this  nomination  request for determination of eligibility meets the documentation standards for registering properties in the National Register of Historic Places and meets the procedural and professional requirements set forth in 36 CFR Part 60. In my opinion, the property  meets  does not meet the National Register criteria.  See continuation sheet.

Valerie A. Tammage  
Signature of certifying official Executive Director, Massachusetts Historical State Historic Preservation Officer

April 9, 1990  
Date Commission;

State or Federal agency and bureau \_\_\_\_\_

In my opinion, the property  meets  does not meet the National Register criteria.  See continuation sheet.

Signature of commenting or other official \_\_\_\_\_

Date \_\_\_\_\_

State or Federal agency and bureau \_\_\_\_\_

5. National Park Service Certification

I, hereby, certify that this property is:

- entered in the National Register.  See continuation sheet.
- determined eligible for the National Register.  See continuation sheet.
- determined not eligible for the National Register.

removed from the National Register.

other, (explain:) \_\_\_\_\_

Signature of the Keeper \_\_\_\_\_

Date of Action \_\_\_\_\_

**6. Function or Use**

Historic Functions (enter categories from instructions)  
Religion / Religious Structure, Church-  
related residence  
Domestic / Multiple dwelling  
Commerce / Specialty Store  
Government / Town Hall

Current Functions (enter categories from instructions)  
Religion / religious Structure, Church-  
relate residence  
Domestic / Multiple dwelling  
Commerce / Specialty Store  
Government / Town Hall

**7. Description**

Architectural Classification  
 (enter categories from instructions)  
Early Republic / Federal  
Late Victorian / Romanesque, Itatlianate,  
Victorian  
No Style  
Late 19th & 20th Century Revival/Colonial  
Revival

Materials (enter categories from instructions)  
 foundation Stone, Granite  
 walls Wood, Clapboard, Stone, Granite  
Vinyl, Flushboard, Brick,  
 roof Slate, Asphalt  
 other \_\_\_\_\_

Describe present and historic physical appearance.

The Monson Center Historic District is a linear district comprising nine buildings, one structure, and two associated objects along a one-block section of Main Street in the center of Monson. The buildings range in date of construction from ca. 1800 to ca. 1910, but most of the resources reflect Monson's heyday of 1865 to 1915. The commercial and residential buildings are generally of two-story, wood-frame construction covered with clapboards or shingles. The dominant public buildings (Memorial Hall and the Universalist Church) are notable exceptions constructed of Monson granite.

Setbacks and landscaping in the district vary, but sitework is minimal on most parcels, as is typical of a commercial center. Main Street is a wide, hardened road that runs north and south through the town, connecting it to Palmer, Massachusetts and Stafford, Connecticut. It was laid out in the 18th century and designated as Massachusetts Route 32 in the 1920s. At one time, mature elm and maple trees lined Main Street, but many were damaged and uprooted by hurricanes in the 1930s and 1950s, so very few trees line Main Street today.

Several of the churches and residences on Main Street feature small yards informally landscaped with lawns, trees, and shrubs. Memorial Hall, as the visual center of the district, is set back from the road behind a substantial lawn. The relatively grand setting amid the utilitarian, businesslike atmosphere of Main Street emphasizes the civic importance of Memorial Hall and its role as a community landmark.

The district features unusually strong anchors, including the Methodist Church, the Universalist Church, Memorial Hall, and the Noble Block (a recently rehabilitated commercial building). The district contains one structure that is individually listed on the National Register: Memorial Hall (198 Main St., listed in 1984). There are four noncontributing buildings, three of which are 19th century commercial blocks now covered with synthetic siding and with modern storefronts. The other is an enlarged residence now covered with synthetic siding.

United States Department of the Interior  
National Park Service

APR 16 1990

# National Register of Historic Places Continuation Sheet

Section number 6 Page 1

Monson Center Historic District,  
Monson, Massachusetts

Historic Functions (continued)

Recreation / Monument / Marker  
Landscape / Street Furniture /  
Object

Current Functions (continued)

Recreation / Monument / Marker  
Landscape / Street Furniture / Object

United States Department of the Interior  
National Park Service

APR 6 1990

National Register of Historic Places  
Continuation SheetSection number 7 Page 1Monson Center Historic District,  
Monson, MassachusettsMain Street - West Side (north to south)

The Universalist Parsonage (Map 115-22, Inv. #342) is a two-story, wood-frame building erected ca. 1820 on a three bay, front gabled, side hall plan. The flushboarded pediment is supported by narrow corner pilasters and pierced by a semi-elliptical fanlight, while the eaves are supported by runs of small modillion blocks. The narrow entrance is framed by Roman pilasters, a rectangular transom with delicate tracery, and a dentilated cornice. The design and details suggest a blending of Federal and Greek Revival styles.

The Universalist-Unitarian Church (Map 115-22A, Inv. #340, built 1889) at the northwest corner of Main and Lincoln Streets presents a picturesque interpretation of the Romanesque Revival style and serves as a southern anchor for the district. The church is constructed of Monson granite with polychrome stonework framing the front, stained glass windows, arched tower openings, gables, and pinnacles. The heavy entrance tower flows into a graceful belfry and spire. The lower chapel bay features a conical tower and stained glass windows. The variety of tower windows and the crested slate roof are characteristic Romanesque features. To the rear, set well back from the street, is an unobtrusive one-story frame addition.

Main Street - East Side (north to south)

The Methodist Church on the northeast corner of Main and Cushman Streets (Map 115-34, Inv. #265) was erected in 1850. The wood-frame building features a simple rectangular plan and a square entrance tower centered on the gable end. The flushboarded facade is pierced by three recessed arches that enclose narrow arched windows. A deeply moulded quatrefoil window marks the top of the entrance tower, and pairs of small pointed spires mark the eave lines. The tall spire that topped the belfry and entrance tower was damaged in the 1938 hurricane and had to be removed in 1952. Photographs record its appearance, which could facilitate restoration.

The Woodbine Block (170 Main Street, Map 115-41, Inv. #341) on the southeast corner of Main and Cushman Streets is a two-story, flat-roofed, wood-frame commercial building erected ca. 1880. In its original state, it featured a clapboard exterior with a wide frieze enriched by moulded panels and scrolled brackets supporting in the cornice. The building is now completely sheathed in vinyl siding. The storefront windows are recent alterations that link the building with adjacent stores.

The one-story commercial row at 172-176 Main Street (Map 115-41) was built ca. 1885, but is now hidden behind a modern facade. The early twentieth century appearance of the row is preserved in photographs, but the old storefronts were removed during the later remodeling.

(continued)

United States Department of the Interior  
National Park Service

APR 16 1990

National Register of Historic Places  
Continuation SheetSection number 7 Page 2Monson Center Historic District,  
Monson, Massachusetts

The two-story, front-gabled, wood frame commercial building at 178 Main Street (Map 115-42, Inv. #339) has also suffered from insensitive remodeling. A new brick storefront has been added to the street level and synthetic siding has been added to the upper story. Despite these changes, the scale and orientation of the building help to suggest the traditional character of Monson's commercial district.

The Noble Block at 186 Main Street (Map 115-43, Inv. #338, built ca. 1890) is the best-preserved example of a wood-frame, commercial building in Monson and has been recently rehabilitated. The 2 1/2-story building is built on a rectangular plan with the gable end facing Main Street. The gable elevation features two plate-glass storefronts at the street level. The long side elevation reveals a series of large dormers in the roofline. Access to the residential units above the stores is provided by staircases and porches accented by spooled posts, brackets, and sawtooth trim.

The two-story, wood-frame residence at 194 Main Street (Map 115-44, Inv. #337) is set back from the street and was erected in two different time periods. The earlier (rear) portion of the building is a hip-roofed Federal-style residence erected ca. 1800 and attributed to Elias Carter, a prominent local builder. The front section was erected ca. 1910 in the Colonial Revival four-square style and features a wrap-around porch. Both sections have been covered with synthetic siding.

Memorial Hall (198 Main Street, Map #115-45, Inv. #336, NR 1984), the exuberant Romanesque Revival visual centerpiece of the district, is a two-story granite structure with asymmetrical towers flanking the center gable and projecting entry porch. The 1885 building, which serves as the Town Hall, features a complex pattern of polychromatic stonework, pointed arches, buttresses, and balconies. The southernmost tower is topped by a granite statue of a Civil War soldier. The building was constructed of local granite by the Flynt Building and Construction Company of Monson.

On the broad lawn in front of Memorial Hall are two cannons representing the Civil War and the Spanish-American War, and the Cushman Memorial Fountain (Map 115-45, Inv. #906, erected 1886). The Cushman Fountain, a round granite structure with a cap supported by half columns, originally stood in the middle of Main Street, but was moved to facilitate traffic flow early in this century.

(continued)

United States Department of the Interior  
National Park Service

APR 16 1990

National Register of Historic Places  
Continuation SheetSection number 7 Page 3Monson Center Historic District,  
Mosnon, Massachusetts

## Archaeological Description

While no prehistoric sites are currently recorded in the district it is possible that sites are present. One known prehistoric site is recorded in the general area (within one mile). The district also exhibits favorable locational criteria (minimal slope, good drainage, close proximity to wetlands) for prehistoric sites. In general, however, the potential for locating significant prehistoric archaeological remains is low because of historic period development in the district. Historic archaeological remains in the district are mostly limited to construction features associated with mid to late 19th century commercial and religious structures still extant in the district. Sheet refuse may also be present around these structures. Occupational related features (trash pits, privies, wells) and outbuilding remains may also exist associated with the ca. 1870 Universalist Parsonage located on Main Street.

(end)

**8. Statement of Significance**

Certifying official has considered the significance of this property in relation to other properties:

nationally  statewide  locally

APR 19 1990

Applicable National Register Criteria  A  B  C  D

Criteria Considerations (Exceptions)  A  B  C  D  E  F  G

Areas of Significance (enter categories from instructions)

Architecture \_\_\_\_\_

Commerce \_\_\_\_\_

Community Planning and Development \_\_\_\_\_

Politics / Government \_\_\_\_\_

Religion \_\_\_\_\_

Period of Significance

1800-1915 \_\_\_\_\_

Significant Dates

\_\_\_\_\_

Cultural Affiliation

\_\_\_\_\_

\_\_\_\_\_

\_\_\_\_\_

Significant Person

Reynolds, J.L. ; Ellis, A.D. \_\_\_\_\_

Architect/Builder

Flynt Building & Construction Company \_\_\_\_\_

Carter, Elias; \_\_\_\_\_

State significance of property, and justify criteria, criteria considerations, and areas and periods of significance noted above.

The Monson Center Historic District represents the commercial and institutional development of the Town of Monson from the Federal Period, through the 19th century surge in prosperity and manufacturing, to the development of the modern suburb after 1915. The district retains integrity of design, materials, location, feeling, and association, and meets Criteria A and C and Exceptions A and B of the National Register at the local level.

The development of the Town Center district can be attributed to a shift in Monson's civic focus. The original town center of the 18th century was located north of the proposed district, at the intersection of Main and High Streets, and was centered on the Congregational Church. The distribution of textile mills and workers housing in the 19th century led to the development of a commercial district about one half mile south of the old center. By the mid-1880s, after land was donated for the erection of Memorial Hall, the proposed district emerged as the clear civic and commercial center of Monson and has remained so to the present day.

1775-1830

The central village of Monson was laid out in the 1760s with a radial road pattern leading from the Congregational Church to outlying areas. Monson erected its first Congregational church in 1762 at what is presently Main and High Streets, and commerce naturally gravitated to the area. However, competition immediately emerged from the southern section of Main Street as the Norcross Tavern, built ca. 1775, became a popular social center. (The Norcross Tavern, which lies just outside the proposed district, was listed individually on the National Register in 1984.)

Embargoes on British trade in the early 19th century led to the development of domestic industries and ushered in a period of commercial expansion for Monson. The Monson granite quarries were opened in 1809, providing high-quality foundation stone for the United States Armory in

See continuation sheet

APR 16 1990

United States Department of the Interior  
National Park ServiceNational Register of Historic Places  
Continuation SheetSection number 8 Page 1Monson Center Historic District,  
Monson, Massachusetts

Springfield and other major building projects. Several local entrepreneurs saw the potential for water-powered textile production on Chicopee Brook, which runs parallel to Main Street (Route 32), and established small mills for cotton and woolen weaving and for cloth finishing.

The main north-south route through Monson was improved as a turnpike from Palmer, Massachusetts to Stafford, Connecticut, which further encouraged development in the town center. The growth of Monson's economy and transportation system was reflected in the construction of institutional, commercial, and residential buildings in the growing town center.

In general, early 19th century buildings in the town center tended to be more ambitious than those in outlying areas. Full-fledged houses were numerous in the village, while one-story cottages were more common throughout town. The Universalist parsonage on Main Street (Map 115-22, Inv. #342, built ca. 1820) is the earliest extant residence in the district and reflects a conservative plan with stylish Federal details.

1830-1850

The mid-19th century was a period of rapid industrial expansion in Monson. In the years preceding the Civil War, local industrialists and entrepreneurs achieved a stable financial base. After the war, they expanded their operations, providing employment for increasing numbers of people. Monson's population increased by forty-one percent between 1830 and 1870, from about 2,200 to 3,200 people. The industrialists also acquired substantial personal fortunes and a strong influence in local affairs. Unlike many other Massachusetts towns, Monson's industries were owned by local residents, rather than absentee investors. Philanthropy and community involvement were essential components of the industrial paternalism that provided a stable environment for businesses and residents.

The opening of the New London Northern railroad through Monson in 1850 provided rapid and inexpensive transportation for both raw and finished goods. The business of the Flynt granite quarry increased, now that the heavy blocks of stone could be more easily shipped. Monson's woolen mills also prospered with three mills, which employed 170 people in 1850, increasing to six mills by 1870.

The manufacture of straw hats and bonnets developed as Monson's third major industry during this period. Charles Merrick introduced the business to Monson as a cottage industry in 1838 and by 1841 had erected a two-story factory (no longer extant) on Main Street, north of the district. In 1858, he and his partners established a sales outlet in New York. By 1865, Monson was the Connecticut Valley's primary producer of straw hats and bonnets and the fifth largest producer of straw goods in Massachusetts.

(continued)

United States Department of the Interior  
National Park Service

APR 16 1990

National Register of Historic Places  
Continuation SheetSection number 8 Page 2Monson Center Historic District,  
Monson, Massachusetts

By 1870, Monson's town center, growing on a north-south axis along Main Street, had developed clear functional enclaves. The Congregational Church, with its commanding site at Main and High Streets (north of the district), provided a focus for the old town center. The surrounding area included the homes of professionals, prosperous merchants, and community leaders. The stretch of Main Street south of the old center was lined by larger homes and by the buildings of Monson Academy, a private secondary school. The expansive Merrick & Fay Straw Works established a clear break between the northern and southern stretches of Main Street. South of the straw works was the new commercial center, proposed for National Register listing in this nomination.

The new town center was appropriately bounded by industry and the railroad: the Straw Works to the north, the Monson Woolen Manufacturing Co. (Cushman Mills) to the east, the Reynolds and Ellis mills to the south, and the railroad tracks to the west. Within the district were a dense cluster of modest homes and stores. As people moved to Monson to work in the local industries, they sought housing within walking distance of the town center, in order to have access to markets and community services. The Irish Catholic worker's neighborhood that developed south of the district further supported the civic and commercial roles of the town center. Financial support and active involvement from two mill owners who lived at the south end of Main Street (J. L. Reynolds and A. D. Ellis) also helped strengthen the civic focus.

The Methodist Church (Main and Cushman Streets, Map 115-34, Inv. #265), built in 1850, was the first church to be erected in Monson center since the Congregational Church in 1762. While Congregationalism remained the backbone of the community and was the exclusive affiliation of selectmen and mill owners, Methodism grew in popularity among Yankee mill workers and farmers. The church symbolized the growing heterogeneity of Monson's population and the financial support that mill owners provided for their workers. J. L. Reynolds, the proprietor of a major woolen mill, supported the Methodist Church for many years because it was favored by his workers. As the proportion of Irish Catholic workers increased, Protestant mill owners also made substantial donations to the establishment and upkeep of Saint Patrick's Church (located south of the proposed district). In 1855, Irish immigrants made up eleven percent of Monson's total population. By 1905, the Irish represented twenty percent of the total.

1885-1915

The turn of the 20th century brought both the zenith and the decline of Monson's economic prosperity, as a tradition of strong re-investment in local industries was undermined by changing economic conditions, prolonged confrontations between management and labor, and repeated fires at the mill complexes.

(continued)

United States Department of the Interior  
National Park Service

APR 16 1990

National Register of Historic Places  
Continuation SheetSection number 8 Page 3Monson Center Historic District,  
Monson, Massachusetts

Monson's industrial base was founded on granite, straw, and woolen goods and the 1880s and 1890s appear to have been decades of prosperity. The woolen mills employed about one thousand workers in the mid-1890s. S. F. Cushman and Sons replaced their old wood frame textile mill on Cushman Street (east of the district) with a new brick complex in 1886. The two competing straw works (Merrick & Fay north of the district, Columbia Straw Works south of the district) employed about eight hundred men and women, while the Flynt granite quarry (northwest of the old town center) employed several hundred people.

The height of Monson's industrial prosperity is well documented in the town's late 19th century public buildings and monuments, most of which were underwritten by local industrialists. The Lyon Memorial Library (1882), the Flynt Fountain (1882), and the Soldiers Monument (1884), located at the old town center of Main and High Streets, reflect the efforts of established families to maintain a strong civic focus around the Congregational Church. The Memorial Town Hall (1885), Cushman Fountain (1888), and Universalist Church (1889) in the proposed district represent the growing importance of the new town center.

The construction of the Memorial Town Hall (198 Main Street, Map 115-45, Inv. #336), built in 1885 with land and money donated by the Reynolds family, clearly established the new civic and social focus of the community. The area around Memorial Hall emerged by 1894 as the primary center of commercial activity, municipal authority, and public recreation. The old town center at Main and High Streets became increasingly isolated from business and more deeply associated with education through the expansion of the Monson Academy. The old town center was a conservative neighborhood, home to the older families and most venerable institutions. By 1912, with the decline of the Flynt granite quarries, very little business remained in the old center. By contrast, the new town center had gained several landmark buildings, including a hotel, a post office, a telephone company, new commercial blocks, and a theatre. The Woodbine Block (170 Main Street, Map 115-41, Inv. #341, built ca. 1880) and the Noble Block (186 Main Street, Map 115-43, Inv. #338, built ca. 1890) illustrate the emerging character of the town center.

Memorial Hall and the Universalist Church are two landmark institutional buildings that are especially significant to the period. Both were underwritten by wealthy mill-owning families with a vested interest in the southern end of Main Street. Memorial Hall (198 Main Street, Map 115-45, Inv. #336, built 1885) was erected as a monument to Civil War veterans and has since become a memorial to veterans of all wars. The site was chosen by the Reynolds family, who donated the land and a substantial amount of cash. The granite building contains offices for the Selectmen and other town boards, as well as a large auditorium and stage. Upon completion in 1885, the new hall became the site of annual Town meetings and frequent entertainments. Town

(continued)

United States Department of the Interior  
National Park Service

APR 16 1990

National Register of Historic Places  
Continuation SheetSection number 8 Page 4Monson Center Historic District,  
Monson, Massachusetts

meetings had previously been held in the Congregational Church, so the erection of Memorial Hall signalled a clear break with the old town center. The auditorium and stage, which were expanded in 1902, accommodated a wide range of musical and theatrical entertainment.

The Universalist Church (Map 115-22A, Inv. #340, built 1889) was a pet project of A.D. Ellis, the only non-Congregational mill owner in Monson. The impressive granite church building lent additional prestige and stability to a neighborhood already attractive to merchants because of its location near a densely populated mill workers' neighborhood. The Universalist Church never achieved a very large membership in comparison to Monson's other churches, but the building remains an impressive monument to the paternalistic hand of one mill owner.

The Noble Block (186 Main Street, Map 115-43, Inv. 338) is the best-preserved example of a late 19th century commercial block in downtown Monson. It was constructed ca. 1890 by the operator of a local stage line to serve as tenement and commercial space.

The Cushman Fountain (map 115-45, Inv. #906), a large granite structure with classical details, originally stood in the middle of Main Street. The fountain was erected in 1886 by Solomon Cushman, a prominent citizen and mill owner who served on several important civic committees. It was designed to honor his family, who had held a long interest in Monson's textile industries, and to provide for the well-being of local residents. With the advent of the automobile, the fountain became a traffic hazard and was moved to a safer location on the lawn of Memorial Hall.

1915-1989

In 1916, the Ellis family donated more than half the funds needed to erect a new school on South Main Street (south of the district). It was the last significant industrialist donation for a public building. All of Monson's three industries (granite, straw, and textiles) declined significantly. The straw hat and bonnet industry closed in 1927, the quarries in 1930. Several mills closed in the 1930s and 1940s. The Ellis mills hung on the longest, but closed in 1959 after a dispute over unionization.

While other industries and businesses have been established in Monson, the town is predominantly suburban in character. The old streetcar line from Palmer ceased operation in 1920. Local roads were hardened and improved to accommodate automobile traffic. The gas stations that punctuate the downtown streetscape today reflect the growing popularity of automobiles in the 1930s and the characteristic shift in commuting patterns.

(continued)

United States Department of the Interior  
National Park Service

APR 16 1990

## National Register of Historic Places Continuation Sheet

Section number 8 Page 5

Monson Center Historic District,  
Monson, Massachusetts

---

### Archaeological Significance

Historic archaeological remains in the district have the potential for providing information on construction techniques and sub-surface architectural features associated with 19th century religious and commercial structures as well as social and economic data pertaining to parishioners and clergy of the different churches in the district. Sheet refuse around churches can provide information on activities held at the church and the social, economic and cultural make up of the parishioners. Occupation related features at the parsonage can provide similar information on the clergy and the families who lived there and, indirectly on the community at large. Historic archaeological information in the district may also provide comparative information useful in reviewing the change in the town focus from the older settlement area to the north to the district locale.

(end)

APR 16 1990

United States Department of the Interior  
National Park ServiceNational Register of Historic Places  
Continuation SheetSection number 10 Page 1Monson Center Historic District,  
Monson, MassachusettsSection 10. Boundary Justification

The buildings and structures that lie beyond the boundaries of the proposed historic district differ in character and orientation from those within the district, as described below:

Main Street: West side, heading north

The first property north of the district is a large, one-story modern supermarket that has recently been expanded into a commercial strip mall. The commercial complex occupies an L-shaped lot to the north and west of the district.

Beyond the commercial complex, Main Street is lined with impressive late 19th and early 20th century residences, many of which were related to the development of the Monson Academy (now merged with the Wilbraham Academy) as a private school. The consistent streetscape of residences and institutional buildings culminates in the Congregational Church complex at the intersection of Main and High Streets (north of the district) and the old Monson Academy buildings on High Street. The north Main Street/High Street area developed as a distinct upper middle class residential neighborhood and has traditionally been the seat of Monson's Congregational establishment. It appears to constitute a potential historic district in its own right with a pattern of development related to, but distinct from, that of Monson Center.

Main Street: East side, heading north

The first property north of the proposed district is a tight cluster of late 19th century vernacular cottages (two facing the street and one on a rear parcel) that have been repeatedly modified and updated. At least one of the buildings is scheduled for demolition in order to provide additional parking for the Monson Savings Bank. All three buildings have suffered a loss of architectural integrity.

The next building north is the Monson Savings Bank, a one-story neo-Georgian brick building. The block itself was originally a standard late 19th century commercial block, but it was extensively altered and rebuilt in the 1940s to its current configuration. No evidence of the earlier block is visible, although it did provide the structural core of the present building.

Next is a modern gasoline and service station (ca. 1960) surrounded by asphalt.

Next is a small cemetery, which was established by the town around 1800. The stones are mostly rectangular marble tablets in the neo-Classical style. The stones are severely weathered and the inscriptions are barely legible.

(continued)

United States Department of the Interior  
National Park Service

APR 16 1990

National Register of Historic Places  
Continuation SheetSection number 10 Page 2Monson Center Historic District,  
Monson, Massachusetts

Next is the former Monson High School, a two-story, brick, neo-Georgian building erected in 1922. The building is currently being used as a middle school. This was the site of the Heimann and Lichten Hat Works, an important manufacturing complex which was destroyed by fire in the early 20th century.

The remainder of Main Street, north to the intersection with High Street, consists of late 19th and early 20th century residences, interspersed with institutional buildings from the former Monson Academy. The streetscape is oriented toward the Congregational Church, as described above, and appears to constitute a potential historic district of a somewhat different character.

Cushman Street: North and south sides, heading east

Beyond the eastern boundary of the proposed historic district is the Cushman mill complex on Chicopee Brook. The complex consists of a large brick mill erected in 1886 and a series of smaller frame buildings which served as a mill office and residences. The mill complex appears to constitute a potential district in its own right and is radically different from the Monson Center district in both scale and character.

Main Street: East side, heading south

South of the proposed district, the east side of Main Street consists of 19th century middle class homes, with some later intrusions (including a service station and new residential construction). South Main Street and the short residential streets running east from Main Street developed as a middle and working class neighborhood related to the Ellis textile mills in South Monson. The Ellis #3 mill, an early 20th century brick complex, survives on the east side of Main Street and could serve as the focus of a South Monson historic district.

Main Street: West side heading south

The first parcel south of the proposed district on the west side of Main Street is a large vacant lot that was formerly occupied by a Victorian commercial block. The commercial structure was destroyed earlier in this century and the unimproved dirt lot has been used for parking. Plans to erect a memorial fountain on the parcel have been stalled.

Next is the Monson Post Office, a one-story, brick, neo-Colonial building (ca. 1960).

Next is the Monson Police Station, housed in a mid-19th century wood-frame commercial block. Unfortunately, the building has been extensively altered and suffered a great loss of integrity. Some Italianate details remain visible on the upper story and eave line.

(continued)

United States Department of the Interior  
National Park Service

APR 16 1990

National Register of Historic Places  
Continuation SheetSection number 10 Page 3Monson Center Historic District,  
Monson, Massachusetts

The remaining buildings on the west side of Main Street are 19th century residences, some of which have been adapted to commercial use. Most of the wood-frame structures were built as housing for middle-level mill workers employed by the South Monson woolen mills. The neighborhood is dominated by the Catholic Church on Green Street (one block up from Main Street) and the Ellis mill complexes on South Main and Bliss Streets.

Lincoln Street: Green Street: West of proposed district

Lincoln Street and Green Street are residential streets that extend off of Main Street, southwest of the district. The houses on both streets are predominantly simple mid-19th century wood-frame structures built for working class families employed by the South Monson woolen mills. Most of the residents were Irish and the neighborhood was clearly oriented toward the Catholic Church on Green Street (the only church in Monson which did not front on Main Street). The area appears eligible for listing as an historic district in its own right, based on the Irish, French-Canadian, and Polish neighborhoods which developed in relation to the South Monson textile industries.

(end)

APR 16 1990

United States Department of the Interior  
National Park Service

# National Register of Historic Places Continuation Sheet

Monson Center Historic District,  
Monson, Massachusetts

Section number 10 Page 4

---

## UTM Coordinates

A	18	722060	4663960
B	18	722110	4663980
C	18	722140	4663940
D	18	722200	4663860
E	18	722140	4663840
F	18	722120	4663880
G	18	722080	4663880
H	18	722060	4663900
I	18	722080	4663910

**9. Major Bibliographical References**

Monson Historical Society, History of Monson, Massachusetts (n.p.); 1960.  
 Monson Historical Society, "Index of Name & Illustrations in the History of Monson, Massachusetts" (unpublished manuscript). Belchertwon, MA 1976.

APR 16 1990

Maps & Atlases:

1855 Map of Hampden County, Massachusetts (Henry F. Walling, pub. by H.A. Haley, Boston).  
 1870 Atlas of Hampden County, Massachusetts (F.W. Beers & Col, New York).  
 1894 Atlas of Hampden County, Massachusetts (L.J. Richards & Co., Springfield, MA).  
 1912 Atlas of Hampden County, Massachusetts (L.J. Richards & Co., Springfield, MA).

Unpublished archives:

Records of the Unitarian Church, Monson, MA.  
 Records of the Methodist Church, Monson, MA.

See continuation sheet

Previous documentation on file (NPS):

- preliminary determination of individual listing (36 CFR 67) has been requested
- previously listed in the National Register Memorial Hall, 1984
- previously determined eligible by the National Register
- designated a National Historic Landmark
- recorded by Historic American Buildings Survey # \_\_\_\_\_
- recorded by Historic American Engineering Record # \_\_\_\_\_

Primary location of additional data:

- State historic preservation office
- Other State agency
- Federal agency
- Local government
- University
- Other

Specify repository: MHC

**10. Geographical Data**

Acreage of property 3.4 acres

UTM References

A              
 Zone Easting Northing

C

B              
 Zone Easting Northing

D

See continuation sheet

Verbal Boundary Description

The Monson Center Historic District is bounded by the rear lot lines of eight parcels on the east and west sides of Main St., as indicated on the attached Assessors Map #115. Town of Monson, Massachusetts. The district includes parcels 115-22, 115-22A, 115-34, 115-41, 115-42, 115-43, 115-44, 115-45, and the section of Main St. (Route 32)

See continuation sheet

Boundary Justification

See continuation sheet

**11. Form Prepared By**

name/title Gregory Farmer / M. Orelup, Pioneer Valley Planning Commission with Betsy Friedberg  
 organization Massachusetts Historical Commission date December, 1989 (revised)  
 street & number 80 Boylston Street telephone (617)727-8470  
 city or town Boston state MA zip code 02116

NATIONAL REGISTER OF HISTORIC PLACES - DISTRICT DATA SHEET  
 MONSON, MASSACHUSETTS CENTER HISTORIC DISTRICT

<u>Parcel #</u>	<u>Address</u>	<u>Name</u>	<u>Date</u>	<u>Style</u>	<u>Inv. #</u>	<u>Status</u>
115-22	Main St.	Universalist Parsonage	c.1820	Federal	342	Bldg./C
115-22A	Main St.	Universalist Church	1889	Romanesque	340	Bldg./C
115-34	Main St.	Methodist Church	1850	Romanesque	265	Bldg./C
115-41	170 Main St.	Woodbine Block	c.1880	Italianate	341	Bldg./NC
115-41	172-176 Main St.	Commercial row	c.1885	Vernacular		Bldg./NC
115-42	178 Main St.	Nichols Block	c.1880	Vernacular	339	Bldg./NC
115-43	186 Main St.	Noble Block	c.1890	Victorian	338	Bldg./C
115-44	194 Main St.	Bergeron house	1800/1910	Fed./Col. Rev.	337	Bldg./NC
*115-45	198 Main St.	Memorial Hall	1885	Romanesque	336	Bldg./C
115-45	Main St.	Civil War cannon	c.1860			obj./C
115-45	Main St.	Cannon	c.1890			obj./C
115-45	Main St.	Cushman Fountain	1886	Victorian	906	Str./C

\*NR 1984

SUMMARY:

5 Contributing Bldgs.  
 1 Contributing Structure  
 2 contributing Objects

4 Non-contributing Bldgs.

APR 16 1990

UNITED STATES DEPARTMENT OF THE INTERIOR  
NATIONAL PARK SERVICE

NATIONAL REGISTER OF HISTORIC PLACES  
EVALUATION/RETURN SHEET

REQUESTED ACTION: NOMINATION

PROPERTY NAME: Monson Center Historic District

MULTIPLE NAME:

STATE & COUNTY: MASSACHUSETTS, Hampden

DATE RECEIVED: 4/16/90 DATE OF PENDING LIST: 5/01/90  
DATE OF 16TH DAY: 5/17/90 DATE OF 45TH DAY: 5/31/90  
DATE OF WEEKLY LIST:

REFERENCE NUMBER: 90000788

NOMINATOR: STATE

REASONS FOR REVIEW:

APPEAL: N DATA PROBLEM: Y \*LANDSCAPE: N LESS THAN 50 YEARS: N  
OTHER: N PDIL: N PERIOD: N PROGRAM UNAPPROVED: N  
REQUEST: N SAMPLE: N SLR DRAFT: N NATIONAL: N

COMMENT WAIVER: N

ACCEPT  RETURN  REJECT 5/30/90 DATE

ABSTRACT/SUMMARY COMMENTS:

*I have serious reservations about the eligibility of this historic district." The boundaries, although justified in the text, seem very artificial. A larger district, or perhaps 2 individual nominations for the churches, would probably have been a more logical approach in this case. See reverse.*

RECOM./CRITERIA Return  
REVIEWER Savage  
DISCIPLINE Architectural History  
DATE 5/30/90

DOCUMENTATION see attached comments Y/N see attached SLR Y/N

CLASSIFICATION

\_\_\_count \_\_\_resource type

STATE/FEDERAL AGENCY CERTIFICATION

FUNCTION

\_\_\_historic \_\_\_current

DESCRIPTION

\_\_\_architectural classification  
\_\_\_materials  
\_\_\_descriptive text

SIGNIFICANCE

Period Areas of Significance--Check and justify below.

Specific dates Builder/Architect  
Statement of Significance (in one paragraph)

\_\_\_summary paragraph  
\_\_\_completeness  
clarity  
\_\_\_applicable criteria  
\_\_\_justification of areas checked  
\_\_\_relating significance to the resource  
\_\_\_context  
\_\_\_relationship of integrity to significance  
\_\_\_justification of exception  
\_\_\_other

*This is a pretty weak looking district, with a significant number of noncontributing properties. Does it really hang together as a defined geographical area conveying a sense of time and place? In any event the period of significance is not clearly justified - what is the reasoning behind it? 1800 does not relate to any extant properties in the district which contribute to its significance. 1915 relates to suburbanization but the effects of suburbanization*

BIBLIOGRAPHY *on this particular section of Mason remains unclear.*

GEOGRAPHICAL DATA

\_\_\_acreage \_\_\_verbal boundary description  
\_\_\_UTMs \_\_\_boundary justification

ACCOMPANYING DOCUMENTATION/PRESENTATION

\_\_\_sketch maps \_\_\_USGS maps photographs \_\_\_presentation info.

OTHER COMMENTS

Questions concerning this nomination may be directed to

Phone \_\_\_\_\_

Signed *[Signature]*

Date *5/30/90*

*At a minimum, photos with adhesive labels should have label directly onto photo backs in case labels become detached.*

PROBLEM DESCRIPTION SHEET

State Name MA

County Name Hampden

Resource Name Manson Center HD

Data Collector's Surname Lapsley

Today's Date 4/25/90

Federal Register List 1/1

Cert. Date 1/1

Reference No. 90-788

Describe Problem:

styles confusing - coded Federal, Romanesque, Late Victorian,  
did not code Italianate, Col. Revival of non-contrib. buildings

Did ~~not~~ list Elias Carter under archit/builder - no mention  
in text that I could find

Team Leader \_\_\_\_\_

Date    /    /   

N R Staff \_\_\_\_\_

Date    /    /   

Problem Team \_\_\_\_\_

Date    /    /

Data Collector Recommendation: SLR / Clarification/Return

Lower Action: SLR Final Return  
None

DOCUMENTATION ISSUES--DISCUSSION SHEET

State Name MA County Name Hampden Resource Name Monson Center HD  
Reference No. 90-788 Multiple Name \_\_\_\_\_  
Listed Date \_\_\_\_\_

Section of Nomination:

Classification  
 State/Agency Certification  
 Function

Description  
 Significance  
 Bibliographical References

Geographical Data  
 Accompanying Documentation  
 Other

See Page \_\_\_\_\_ Paragraph \_\_\_\_\_

Solution:

SLR

NR Staff:

Date:

Data Collector's Explanation of Problem:

please review period of significance. dates (1800, 1915) seem to be tied to non-contributing building or are only vaguely explained (latest building, of 1910 date, is non-contrib, only reference to 1915 I saw was brief ref. to subub div't in Sect. 8; 1800 bldg is NC) coded 1800-1899 for now to include contrib bldgs (1820-1850)

IS SIG. FOR RELIGION JUSTIFIED?  
YES

ALSO: sig. persons listed, cut B not checked

Data Collector: Lapsley

Date: 4/25/90

Resolution in Data Base:

coded names, checked cut B for now

D.B. Corrected:

Date:

United States Department of the Interior  
National Park Service

RECEIVED  
MAR 22 1991

National Register of Historic Places  
Registration Form

NATIONAL  
REGISTER

This form is for use in nominating or requesting determinations of eligibility for individual properties or districts. See instructions in *Guidelines for Completing National Register Forms* (National Register Bulletin 16). Complete each item by marking "x" in the appropriate box or by entering the requested information. If an item does not apply to the property being documented, enter "N/A" for "not applicable." For functions, styles, materials, and areas of significance, enter only the categories and subcategories listed in the instructions. For additional space use continuation sheets (Form 10-900a). Type all entries.

1. Name of Property

historic name Monson Center Historic District

other names/site number \_\_\_\_\_

2. Location

street & number MainSt.

not for publication

city, town Monson

vicinity

state MA

code 025

county Hampden

code 013

zip code 01057

3. Classification

Ownership of Property

- private
- public-local
- public-State
- public-Federal

Category of Property

- building(s)
- district
- site
- structure
- object

Number of Resources within Property

Contributing	Noncontributing	
5	4	buildings
NA	NA	sites
1	NA	structures
2	NA	objects
8	4	Total

Name of related multiple property listing: \_\_\_\_\_

Number of contributing resources previously listed in the National Register 1

4. State/Federal Agency Certification

As the designated authority under the National Historic Preservation Act of 1966, as amended, I hereby certify that this  nomination  request for determination of eligibility meets the documentation standards for registering properties in the National Register of Historic Places and meets the procedural and professional requirements set forth in 36 CFR Part 60. In my opinion, the property  meets  does not meet the National Register criteria.  See continuation sheet.

Signature of certifying official

Date

Julie B. McDonough 3/15/91  
Executive Director, Massachusetts Historical State Historic Preservation Officer

State or Federal agency and bureau

In my opinion, the property  meets  does not meet the National Register criteria.  See continuation sheet.

Signature of commenting or other official

Date

State or Federal agency and bureau

5. National Park Service Certification

I, hereby, certify that this property is:

- entered in the National Register.  
 See continuation sheet.
- determined eligible for the National Register.  See continuation sheet.
- determined not eligible for the National Register.
- removed from the National Register.
- other, (explain): \_\_\_\_\_

Robert L. Swage 5/6/91

Signature of the Keeper

Date of Action

**6. Function or Use**

Historic Functions (enter categories from instructions)

Commerce / Trade  
 Religion  
 Government / Town Hall

Current Functions (enter categories from instructions)

Government / Town Hall  
 Commerce / Trade  
 Religion

**7. Description**

Architectural Classification  
 (enter categories from instructions)

Late Victorian / Romanesque  
 Mid 19th c. / Greek Revival  
 Early Republic / Federal

Materials (enter categories from instructions)

foundation stone / granite  
 walls wood / clapboard  
 stone / granite  
 roof stone / slate; asphalt  
 other

Describe present and historic physical appearance.

The Monson Center Historic District is a linear district comprising nine buildings, one structure, and two associated objects along a one-block section of Main Street in the center of Monson. The buildings range in date of construction from ca. 1800 to ca. 1910, but most of the resources reflect Monson's heyday of 1865 to 1915. The commercial and residential buildings are generally of two-story, wood-frame construction covered with clapboards or shingles. The dominant public buildings (Memorial Hall and the Universalist Church) are notable exceptions constructed of Monson granite.

Setbacks and landscaping in the district vary, but sitework is minimal on most parcels, as is typical of a commercial center. Main Street is a wide, hardened road that runs north and south through the town, connecting it to Palmer, Massachusetts and Stafford, Connecticut. It was laid out in the 18th century and designated as Massachusetts Route 32 in the 1920s. At one time, mature elm and maple trees lined Main Street in the center of Monson, but many were damaged and uprooted by hurricanes in the 1930s and 1950s, so very few trees line Main Street today.

Several of the churches and residences on Main Street feature small yards informally landscaped with lawns, trees, and shrubs. Memorial Hall, as the visual center of the district, is set back from the road behind a substantial lawn. The relatively grand setting amid the utilitarian, businesslike atmosphere of Main Street emphasizes the civic importance of Memorial Hall and its role as a community landmark.

The district features unusually strong anchors, including the Methodist Church, the Universalist Church, Memorial Hall, and the Noble Block (a recently rehabilitated commercial building). The district contains one structure that is individually listed on the National Register: Memorial Hall (198 Main St., listed in 1984). There are four noncontributing buildings, three of which are 19th century commercial blocks now covered with synthetic siding and with modern storefronts. The other is an enlarged residence now covered with synthetic siding.

United States Department of the Interior  
National Park Service

# National Register of Historic Places Continuation Sheet

Monson Center Historic District,  
Monson, Massachusetts

Section number 6 Page 1

---

Historic Functions (continued)

Recreation / Monument / Marker  
Landscape / Street Furniture /  
Object

Current Functions (continued)

Recreation / Monument/ Marker  
Landscape / Street Furniture / Object

United States Department of the Interior  
National Park ServiceNational Register of Historic Places  
Continuation SheetMonson Center Historic District,  
Monson, MassachusettsSection number 7 Page 1Main Street - West Side (north to south)

The Universalist Parsonage (Map 115-22, Inv. #342) is a two-story, wood-frame building erected ca. 1820 on a three bay, front gabled, side hall plan. The flushboarded pediment is supported by narrow corner pilasters and pierced by a semi-elliptical fanlight, while the eaves are supported by runs of small modillion blocks. The narrow entrance is framed by Roman pilasters, a rectangular transom with delicate tracery, and a dentilated cornice. The design and details suggest a blending of Federal and Greek Revival styles.

The Universalist-Unitarian Church (Map 115-22A, Inv. #340, built 1889) at the northwest corner of Main and Lincoln Streets presents a picturesque interpretation of the Romanesque Revival style and serves as a southern anchor for the district. The church is constructed of Monson granite with polychrome stonework framing the front, stained glass windows, arched tower openings, gables, and pinnacles. The heavy entrance tower flows into a graceful belfry and spire. The lower chapel bay features a conical tower and stained glass windows. The variety of tower windows and the crested slate roof are characteristic Romanesque features. To the rear, set well back from the street, is an unobtrusive one-story frame addition.

Main Street - East Side (north to south)

The Methodist Church on the northeast corner of Main and Cushman Streets (Map 115-34, Inv. #265) was erected in 1850. The wood-frame building features a simple rectangular plan and a square entrance tower centered on the gable end. The flushboarded facade is pierced by three recessed arches that enclose narrow arched windows. A deeply moulded quatrefoil window marks the top of the entrance tower, and pairs of small pointed spires mark the eave lines. The tall spire that topped the belfry and entrance tower was damaged in the 1938 hurricane and had to be removed in 1952. Photographs record its appearance, which could facilitate restoration.

The Woodbine Block (170 Main Street, Map 115-41, Inv. #341) on the southeast corner of Main and Cushman Streets is a two-story, flat-roofed, wood-frame commercial building erected ca. 1880. In its original state, it featured a clapboard exterior with a wide frieze enriched by moulded panels and scrolled brackets supporting in the cornice. The building is now completely sheathed in vinyl siding. The storefront windows are recent alterations that link the building with adjacent stores.

The one-story commercial row at 172-176 Main Street (Map 115-41) was built ca. 1885, but is now hidden behind a modern facade. The early twentieth century appearance of the row is preserved in photographs, but the old storefronts were removed during the later remodeling.

(continued)

United States Department of the Interior  
National Park ServiceNational Register of Historic Places  
Continuation SheetMonson Center Historic District,  
Monson, MassachusettsSection number 7 Page 2

The two-story, front-gabled, wood frame commercial building at 178 Main Street (Map 115-42, Inv. #339, ca. 1880) has also suffered from insensitive remodeling. A new brick storefront has been added to the street level and synthetic siding has been added to the upper story. Despite these changes, the scale and orientation of the building help to suggest the traditional character of Monson's commercial district.

The Noble Block at 186 Main Street (Map 115-43, Inv. #338, built ca. 1890) is the best-preserved example of a wood-frame, commercial building in Monson and has been recently rehabilitated. The 2 1/2-story building is built on a rectangular plan with the gable end facing Main Street. The gable elevation features two plate-glass storefronts at the street level. The long side elevation reveals a series of large dormers in the roofline. Access to the residential units above the stores is provided by staircases and porches accented by spooled posts, brackets, and sawtooth trim.

The two-story, wood-frame residence at 194 Main Street (Map 115-44, Inv. #337) is set back from the street and was erected in two different time periods. The earlier (rear) portion of the building is a hip-roofed Federal-style residence erected ca. 1800 and attributed to Elias Carter, a prominent local builder. The front section was erected ca. 1910 in the Colonial Revival four-square style and features a wrap-around porch. Both sections have been covered with synthetic siding.

Memorial Hall (198 Main Street, Map #115-45, Inv. #336, NR 1984), the exuberant Romanesque Revival visual centerpiece of the district, is a two-story granite structure with asymmetrical towers flanking the center gable and projecting entry porch. The 1885 building, which serves as the Town Hall, features a complex pattern of polychromatic stonework, pointed arches, buttresses, and balconies. The southernmost tower is topped by a granite statue of a Civil War soldier. The building was constructed of local granite by the Flynt Building and Construction Company of Monson.

On the broad lawn in front of Memorial Hall are two cannons representing the Civil War and the Spanish-American War, and the Cushman Memorial Fountain (Map 115-45, Inv. #906, erected 1886). The Cushman fountain, a round granite structure with a cap supported by half columns, originally stood in the middle of Main Street, but was moved to facilitate traffic flow early in this century.

(continued)

United States Department of the Interior  
National Park Service

## National Register of Historic Places Continuation Sheet

Monson Center Historic District,  
Monson, Massachusetts

Section number 7 Page 3

---

### Archaeological Description

While no prehistoric sites are currently recorded in the district it is possible that sites are present. One known prehistoric site is recorded in the general area (within one mile). The district also exhibits favorable locational criteria (minimal slope, good drainage, close proximity to wetlands) for prehistoric sites. In general, however, the potential for locating significant prehistoric archaeological remains is low because of historic period development in the district. Historic archaeological remains in the district are mostly limited to construction features associated with mid to late 19th century commercial and religious structures still extant in the district. Sheet refuse may also be present around these structures. Occupational related features (trash pits, privies, wells) and outbuilding remains may also exist associated with the ca. 1870 Universalist Parsonage located on Main Street.

(end)

**8. Statement of Significance**

Certifying official has considered the significance of this property in relation to other properties:

nationally     statewide     locally

Applicable National Register Criteria     A     B     C     D

Criteria Considerations (Exceptions)     A     B     C     D     E     F     G

Areas of Significance (enter categories from instructions)

Architecture  
 Commerce  
 Religion  
 Politics / Government

Period of Significance

1820-1940

Significant Dates

Cultural Affiliation

Significant Person

Architect/Builder

State significance of property, and justify criteria, criteria considerations, and areas and periods of significance noted above.

The Monson Center Historic District represents the commercial and institutional development of the Town of Monson from the late Federal Period, through the 19th century surge in prosperity and manufacturing, to the development of the modern suburb after 1915. The district and the individual buildings retain integrity of design, materials, location, feeling, and association, and meets Criteria A and C and Exceptions A and B of the National Register at the local level.

The development of the Town Center district can be attributed to a shift in Monson's civic focus. The original town center of the 18th century was located north of the proposed district, at the intersection of Main and High Streets, and was centered on the Congregational Church. The distribution of textile mills and workers housing in the 19th century led to the development of a commercial district about one half mile south of the old center. By the mid-1880s, after land was donated for the erection of Memorial Hall, the proposed district emerged as the clear civic and commercial center of Monson and has remained so to the present day.

1775-1830

The central village of Monson was laid out in the 1760s with a radial road pattern leading from the Congregational Church to outlying areas. Monson erected its first Congregational church in 1762 at what is presently Main and High Streets, and commerce naturally gravitated to the area. However, competition immediately emerged from the southern section of Main Street as the Norcross Tavern, built ca. 1775, became a popular social center. (The Norcross Tavern, which lies just outside the proposed district, was listed individually on the National Register in 1984.)

Embargoes on British trade in the early 19th century led to the development of domestic industries and ushered in a period of commercial expansion for Monson. The Monson granite quarries were opened in 1809,

See continuation sheet

**9. Major Bibliographical References**

- Monson Historical Society, History of Monson, Massachusetts (n.p.); 1960.
- Monson Historical Society, "Index of Names & Illustrations in the History of Monson, Massachusetts" (unpublished manuscript). Belchertown, MA; 1976.
- 1855 Map of Hampden County, Massachusetts (Henry F. Walling, pub. by H.A. Haley, Boston).
- 1870 Atlas of Hampden County, Massachusetts (F.W. Beers & Co., New York).
- 1894 Atlas of Hampden County, Massachusetts (L.J. Richards & Co., Springfield, MA).
- 1912 Atlas of Hampden County, Massachusetts (L.J. Richards & Co., Springfield, MA).
- Manuscript Records of Unitarian Church, Monson, MA.
- Manuscript Records of Methodist Church, Monson, MA.
- Manuscript Records of St. Patrick's Roman Catholic Church, Monson, MA.

See continuation sheet

Previous documentation on file (NPS):

- preliminary determination of individual listing (36 CFR 67) has been requested
- previously listed in the National Register
- previously determined eligible by the National Register
- designated a National Historic Landmark
- recorded by Historic American Buildings Survey # \_\_\_\_\_
- recorded by Historic American Engineering Record # \_\_\_\_\_

Primary location of additional data:

- State historic preservation office
- Other State agency
- Federal agency
- Local government
- University
- Other

Specify repository: \_\_\_\_\_

**10. Geographical Data**

Acreage of property 3.4 acres

UTM References

A	1,8	7,2,2	0,4,0	4,6	6,3	9,0,0	B	1,8	7,2,2	1,0,0	4,6	6,4	0,0,0
	Zone	Easting		Northing			Zone	Easting		Northing			
C	1,8	7,2,2	2,0,0	4,6	6,3	8,5,0	D	1,8	7,2,2	0,8,0	4,6	6,3	8,2,5

See continuation sheet

Verbal Boundary Description

The Monson Center Historic District is bounded by the rear lot lines of eight parcels on the east and west sides of Main St., as indicated on the attached Assessors Map #115, Town of Monson, Massachusetts. The district includes parcels 115-22, 115-22A, 115-34, 115-41, 115-42, 115-43, 115-44, 115-45, and the section of Main St. (Rt. 32) that runs between them.

See continuation sheet

Boundary Justification

See continuation sheet

**11. Form Prepared By** Betsy Friedberg, National Register Dir., MHC with Gregory Farmer & Margaret Orelup, Pioneer Valley Planning Commission, for Monson Historical Commission  
 name/title Margaret Orelup, Pioneer Valley Planning Commission, for Monson Historical Commission  
 organization Massachusetts Historical Commission date January 1991 (rev.)  
 street & number 80 Boylston Street telephone (617) 727-8470  
 city or town Boston state MA zip code 02116

United States Department of the Interior  
National Park Service

National Register of Historic Places  
Continuation Sheet

Monson Center Historic District,  
Monson, Massachusetts

Section number 8 - Page 1

providing high-quality foundation stone for the United States Armory in Springfield and other major building projects. Several local entrepreneurs saw the potential for water-powered textile production on Chicopee Brook, which runs parallel to Main Street (Route 32), and established small mills for cotton and woolen weaving and for cloth finishing.

The main north-south route through Monson was improved as a turnpike from Palmer, Massachusetts to Stafford, Connecticut, which further encouraged development in the town center. The growth of Monson's economy and transportation system was reflected in the construction of institutional, commercial, and residential buildings in the growing town center.

In general, early 19th century buildings in the town center tended to be more ambitious than those in outlying areas. Full-fledged houses were numerous in the village, while one-story cottages were more common throughout town. The Universalist parsonage on Main Street (Map 115-22, Inv. #342, built ca. 1820) is the earliest extant residence in the district and reflects a conservative plan with stylish Federal details.

1830-1850

The mid-19th century was a period of rapid industrial expansion in Monson. In the years preceding the Civil War, local industrialists and entrepreneurs achieved a stable financial base. After the war, they expanded their operations, providing employment for increasing numbers of people. Monson's population increased by forty-one percent between 1830 and 1870, from about 2,200 to 3,200 people. The industrialists also acquired substantial personal fortunes and a strong influence in local affairs. Unlike many other Massachusetts towns, Monson's industries were owned by local residents, rather than absentee investors. Philanthropy and community involvement were essential components of the industrial paternalism that provided a stable environment for businesses and residents.

The opening of the New London Northern railroad through Monson in 1850 provided rapid and inexpensive transportation for both raw and finished goods. The business of the Flynt granite quarry increased, now that the heavy blocks of stone could be more easily shipped. Monson's woolen mills also prospered with three mills, which employed 170 people in 1850, increasing to six mills by 1870.

The manufacture of straw hats and bonnets developed as Monson's third major industry during this period. Charles Merrick introduced the business to Monson as a cottage industry in 1838 and by 1841 had erected a two-story factory (no longer extant) on Main Street, north of the district. In 1858, he and his partners established a sales outlet in New York. By 1865, Monson was the Connecticut Valley's primary producer of straw hats and bonnets and the

(continued)

United States Department of the Interior  
National Park ServiceNational Register of Historic Places  
Continuation SheetMonson Center Historic District,  
Monson, MassachusettsSection number 8 Page 2

fifth largest producer of straw goods in Massachusetts.

By 1870, Monson's town center, growing on a north-south axis along Main Street, had developed clear functional enclaves. The Congregational Church, with its commanding site at Main and High Streets (north of the district), provided a focus for the old town center. The surrounding area included the homes of professionals, prosperous merchants, and community leaders. The stretch of Main Street south of the old center was lined by larger homes and by the buildings of Monson Academy, a private secondary school. The expansive Merrick & Fay Straw Works established a clear break between the northern and southern stretches of Main Street. South of the straw works was the new commercial center, proposed for National Register listing in this nomination.

The new town center was appropriately bounded by industry and the railroad: the Straw Works to the north, the Monson Woolen Manufacturing Co. (Cushman Mills) to the east, the Reynolds and Ellis mills to the south, and the railroad tracks to the west. Within the district were a dense cluster of modest homes and stores. As people moved to Monson to work in the local industries, they sought housing within walking distance of the town center, in order to have access to markets and community services. The Irish Catholic worker's neighborhood that developed south of the district further supported the civic and commercial roles of the town center. Financial support and active involvement from two mill owners who lived at the south end of Main Street (J. L. Reynolds and A. D. Ellis) also helped strengthen the civic focus.

The Methodist Church (Main and Cushman Streets, Map 115-34, Inv. #265), built in 1850, was the first church to be erected in Monson center since the Congregational Church in 1762. While Congregationalism remained the backbone of the community and was the exclusive affiliation of selectmen and mill owners, Methodism grew in popularity among Yankee mill workers and farmers. The church symbolized the growing heterogeneity of Monson's population and the financial support that mill owners provided for their workers. J. L. Reynolds, the proprietor of a major woolen mill, supported the Methodist Church for many years because it was favored by his workers. As the proportion of Irish Catholic workers increased, Protestant mill owners also made substantial donations to the establishment and upkeep of Saint Patrick's Church (located south of the proposed district). In 1855, Irish immigrants made up eleven percent of Monson's total population. By 1905, the Irish represented twenty percent of the total.

1885-1915

The turn of the 20th century brought both the zenith and the decline of Monson's economic prosperity, as a tradition of strong re-investment in local industries was undermined by changing economic conditions, prolonged confrontations between management and labor, and repeated fires at the mill complexes.

(continued)

United States Department of the Interior  
National Park ServiceNational Register of Historic Places  
Continuation SheetMonson Center Historic District,  
Monson, MassachusettsSection number 8 Page 3

Monson's industrial base was founded on granite, straw, and woolen goods and the 1880s and 1890s appear to have been decades of prosperity. The woolen mills employed about one thousand workers in the mid-1890s. S. F. Cushman and Sons replaced their old wood frame textile mill on Cushman Street (east of the district) with a new brick complex in 1886. The two competing straw works (Merrick & Fay north of the district, Columbia Straw Works south of the district) employed about eight hundred men and women, while the Flynt granite quarry (northwest of the old town center) employed several hundred people.

The height of Monson's industrial prosperity is well documented in the town's late 19th century public buildings and monuments, most of which were underwritten by local industrialists. The Lyon Memorial Library (1882), the Flynt Fountain (1882), and the Soldiers Monument (1884), located at the old town center of Main and High Streets, reflect the efforts of established families to maintain a strong civic focus around the Congregational Church. The Memorial Town Hall (1885), Cushman Fountain (1888), and Universalist Church (1889) in the proposed district represent the growing importance of the new town center.

The construction of the Memorial Town Hall (198 Main Street, Map 115-45, Inv. #336), built in 1885 with land and money donated by the Reynolds family, clearly established the new civic and social focus of the community. The area around Memorial Hall emerged by 1894 as the primary center of commercial activity, municipal authority, and public recreation. The old town center at Main and High Streets became increasingly isolated from business and more deeply associated with education through the expansion of the Monson Academy. The old town center was a conservative neighborhood, home to the older families and most venerable institutions. By 1912, with the decline of the Flynt granite quarries, very little business remained in the old center. By contrast, the new town center had gained several landmark buildings, including a hotel, a post office, a telephone company, new commercial blocks, and a theatre. The Woodbine Block (170 Main Street, Map 115-41, Inv. #341, built ca. 1880) and the Noble Block (186 Main Street, Map 115-43, Inv. #338, built ca. 1890) illustrate the emerging character of the town center.

Memorial Hall and the Universalist Church are two landmark institutional buildings that are especially significant to the period. Both were underwritten by wealthy mill-owning families with a vested interest in the southern end of Main Street. Memorial Hall (198 Main Street, Map 115-45, Inv. #336, built 1885) was erected as a monument to Civil War veterans and has since become a memorial to veterans of all wars. The site was chosen by the Reynolds family, who donated the land and a substantial amount of cash. The granite building contains offices for the Selectmen and other town boards, as well as a large auditorium and stage. Upon completion in 1885, the new hall became the site of annual Town meetings and frequent entertainments. Town meetings had previously been held in the Congregational Church, so the

(continued)

United States Department of the Interior  
National Park ServiceNational Register of Historic Places  
Continuation SheetMonson Center Historic District,  
Monson, MassachusettsSection number 8 Page 4

erection of Memorial Hall signalled a clear break with the old town center. The auditorium and stage, which were expanded in 1902, accommodated a wide range of musical and theatrical entertainment.

The Universalist Church (Map 115-22A, Inv. #340, built 1889) was a pet project of A.D. Ellis, the only non-Congregational mill owner in Monson. The impressive granite church building lent additional prestige and stability to a neighborhood already attractive to merchants because of its location near a densely populated mill workers' neighborhood. The Universalist Church never achieved a very large membership in comparison to Monson's other churches, but the building remains an impressive monument to the paternalistic hand of one mill owner.

The Noble Block (186 Main Street, Map 115-43, Inv. 338) is the best-preserved example of a late 19th century commercial block in downtown Monson. It was constructed ca. 1890 by the operator of a local stage line to serve as tenement and commercial space.

The Cushman Fountain (map 115-45, Inv. #906), a large granite structure with classical details, originally stood in the middle of Main Street. The fountain was erected in 1886 by Solomon Cushman, a prominent citizen and mill owner who served on several important civic committees. It was designed to honor his family, who had held a long interest in Monson's textile industries, and to provide for the well-being of local residents. With the advent of the automobile, the fountain became a traffic hazard and was moved to a safer location on the lawn of Memorial Hall.

1915-1989

In 1916, the Ellis family donated more than half the funds needed to erect a new school on South Main Street (south of the district). It was the last significant industrialist donation for a public building. All of Monson's three industries (granite, straw, and textiles) declined significantly. The straw hat and bonnet industry closed in 1927, the quarries in 1930. Several mills closed in the 1930s and 1940s. The Ellis mills hung on the longest, but closed in 1959 after a dispute over unionization.

While other industries and businesses have been established in Monson, the town is predominantly suburban in character. The old streetcar line from Palmer ceased operation in 1920. Local roads were hardened and improved to accommodate automobile traffic. The gas stations that punctuate the downtown streetscape today reflect the growing popularity of automobiles in the 1930s and the characteristic shift in commuting patterns.

(continued)

United States Department of the Interior  
National Park ServiceNational Register of Historic Places  
Continuation SheetMonson Center Historic District,  
Monson, MassachusettsSection number 8 Page 5Summary

The proposed historic district represents a small but cohesive town center with especially strong historical continuity. This cluster of local landmarks and associated commercial structures is expected to be the first of several contiguous historic districts in the village of Monson, each with distinct historical and architectural characteristics. The other anticipated districts are as follows:

1) The Old Center District, one half mile north of the Monson Center district, will focus on the Congregational Church and Lyon Memorial Library at Main & High St., the institutional and support buildings related to Monson Academy (a former private secondary school), and the surrounding exclusive residential neighborhood. (Criteria A & C; period of significance 1760-1940)

2) The Cushman Mill District at Main & Cushman St., immediately northeast of the Monson Center district, will include the brick manufacturing complex, related wood frame office and tenement buildings, and private residences. (Criteria A & C, period of significance 1790-1940)

3) The Ellis Mill District at Main, Bridge, and Green Streets, immediately east and south of the Monson Center district, will center on the Ellis #1 and Ellis #3 woolen mills, adjacent tenement houses, St. Patrick's Roman Catholic church, and the surrounding working-class residential neighborhood. (Criteria A, C, & D; period of significance 1850-1941)

The establishment of National Register historic districts is one aspect of a town-wide plan to reevaluate community history as a guide for growth management.

(continued)

United States Department of the Interior  
National Park ServiceNational Register of Historic Places  
Continuation SheetMonson Center Historic District,  
Monson, MassachusettsSection number 8 Page 6

## Archaeological Significance

Historic archaeological remains in the district have the potential for providing information on construction techniques and sub-surface architectural features associated with 19th century religious and commercial structures as well as social and economic data pertaining to parishioners and clergy of the different churches in the district. Sheet refuse around churches can provide information on activities held at the church and the social, economic and cultural make up of the parishioners. Occupation related features at the parsonage can provide similar information on the clergy and the families who lived there and, indirectly on the community at large. Historic archaeological information in the district may also provide comparative information useful in reviewing the change in the town focus from the older settlement area to the north to the district locale.

(end)

United States Department of the Interior  
National Park Service

## National Register of Historic Places Continuation Sheet

Monson Center Historic District,  
Monson, Massachusetts

Section number 10 Page 1

### Boundary Justification

The area proposed as the Monson Center Historic District includes the traditional civic, religious, and commercial center in the Town of Monson, Massachusetts. The buildings and structures that lie beyond the boundaries of the proposed district differ in scale, character, orientation, history, and use from those in the district. The relatively low density and high traffic volume of the downtown area reflect Monson's current suburban character.

The proposed district is bordered immediately on the north by a strip of new commercial development on Main St., consisting of gas stations, banks, supermarkets, and related facilities. Beyond the strip and one half mile north of the Monson Center district is the old (18th c.) town center, consisting of religious and institutional buildings surrounded by a well-to-do Victorian residential neighborhood.

Adjacent to the Monson Center district on the northeast is the Cushman mill enclave, an early industrial cluster of tenements, houses, and subsidiary buildings around a brick mill complex on Chicopee Brook. The brook runs north, just east of the Monson Center district.

Immediately south and east of the Monson Center district lies a sprawling late industrial neighborhood of modest Victorian single-family homes, duplex residences, tenements, and small commercial buildings, all focused on the woolen mills of the former Ellis Manufacturing Co. The working class neighborhood is dominated by St. Patrick's Church (the only church that does not front on Main St.), suggesting the immigrant origins of most mill laborers.

Beyond the village in all directions lie old farmsteads, wooded hillsides, auto-related services, and low-density suburban residential development.

NATIONAL REGISTER OF HISTORIC PLACES - DISTRICT DATA SHEET  
 MONSON, MASSACHUSETTS CENTER HISTORIC DISTRICT

<u>Parcel #</u>	<u>Address</u>	<u>Name</u>	<u>Date</u>	<u>Style</u>	<u>Inv. #</u>	<u>Status</u>
115-22	Main St.	Universalist Parsonage	c.1820	Federal	342	Bldg./C
115-22A	Main St.	Universalist Church	1889	Romanesque	340	Bldg./C
115-34	Main St.	Methodist Church	1850	Romanesque	265	Bldg./C
115-41	170 Main St.	Woodbine Block	c.1880	Italianate	341	Bldg./NC
115-41	172-176 Main St.	Commercial row	c.1885	Vernacular		Bldg./NC
115-42	178 Main St.	Nichols Block	c.1880	Vernacular	339	Bldg./NC
115-43	186 Main St.	Noble Block	c.1890	Victorian	338	Bldg./C
115-44	194 Main St.	Bergeron house	1800/1910	Fed./Col. Rev.	337	Bldg./NC
115-45	198 Main St.	Memorial Hall	1885	Romanesque	336	Bldg./C
115-45	Main St.	Civil War cannon	c.1860			obj./C
115-45	Main St.	Cannon	c.1890			obj./C
115-45	Main St.	Cushman Fountain	1886	Victorian	906	Str./C

SUMMARY:

5 Contributing Bldgs.  
 1 Contributing Structure  
 2 contributing Objects

4 Non-contributing Bldgs.

United States Department of the Interior  
National Park Service

National Register of Historic Places  
Continuation Sheet

Section number \_\_\_\_\_ Page \_\_\_\_\_

SUPPLEMENTARY LISTING RECORD

NRIS Reference Number: 90000788

Date Listed: 05/06/91

Monson Center Historic District  
Property Name

Hampden  
County

MA  
State

N/A  
Multiple Name

This property is listed in the National Register of Historic Places in accordance with the attached nomination documentation subject to the following exceptions, exclusions, or amendments, notwithstanding the National Park Service certification included in the nomination documentation.

*Betsy J. Savage*  
Signature of the Keeper

5/6/91  
Date of Action

=====

Amended Items in Nomination:

**8. Statement of Significance: Criteria Considerations and Period of Significance**

Criteria Exception A applies because of the documented religious significance and use of 2 major buildings in the small district.

Criteria Exception B applies to the move of the significant Cushman Fountain outside the parameters of the period of significance.

The period of significance is 1820-1890.

This information was confirmed with Betsy Friedberg, MASHPO, by telephone.

=====

**DISTRIBUTION:**

- National Register property file
- Nominating Authority (without attachment)

UNITED STATES DEPARTMENT OF THE INTERIOR  
NATIONAL PARK SERVICE

NATIONAL REGISTER OF HISTORIC PLACES  
EVALUATION/RETURN SHEET

REQUESTED ACTION: RESUBMISSION

PROPERTY NAME: Monson Center Historic District

MULTIPLE  
NAME:

STATE & COUNTY: MASSACHUSETTS, Hampden

DATE RECEIVED: 3/22/91 DATE OF PENDING LIST:  
DATE OF 16TH DAY: DATE OF 45TH DAY: 5/06/91  
DATE OF WEEKLY LIST:

REFERENCE NUMBER: 90000788

NOMINATOR: STATE

DETAILED EVALUATION: Y

ACCEPT  RETURN  REJECT 5/6/91 DATE

ABSTRACT/SUMMARY COMMENTS:

Because this marginal district is really all that is left of historic Monson Center's central core, and because this district is part of a planned approach to survey and registration by the town, it is accepted.

RECOM./CRITERIA Accept  
REVIEWER Sawall  
DISCIPLINE Architectural History  
DATE 5/6/91

DOCUMENTATION see attached comments Y/N see attached (SLR) Y/N

---

CLASSIFICATION

count       resource type

---

STATE/FEDERAL AGENCY CERTIFICATION

---

FUNCTION

historic       current

---

DESCRIPTION

architectural classification  
 materials  
 descriptive text

---

SIGNIFICANCE

Period      Areas of Significance--Check and justify below

Specific dates      Builder/Architect  
Statement of Significance (in one paragraph)

summary paragraph  
 completeness  
 clarity  
 applicable criteria  
 justification of areas checked  
 relating significance to the resource  
 context  
 relationship of integrity to significance  
 justification of exception  
 other

---

BIBLIOGRAPHY

---

GEOGRAPHICAL DATA

acreage       verbal boundary description  
 UTM's       boundary justification

---

ACCOMPANYING DOCUMENTATION/PRESENTATION

sketch maps     USGS maps     photographs     presentation

---

OTHER COMMENTS

Questions concerning this nomination may be directed to

\_\_\_\_\_ Phone \_\_\_\_\_

Signed \_\_\_\_\_ Date \_\_\_\_\_



2

Photo 2. Universalist parsonage, Main St., Monson (MA),  
photographer facing northwest.

APR 16 1990



3

Photo 3. Universalist Church, Main St., nw. corner Lincoln  
St., Monson (MA), photographer facing northwest.

M

APR 16 1990



4

Photo 4. Methodist Church, Main St., ne. corner Cushman St.,  
Monson (MA), photographer facing northeast.

4

APR 16 1990



Woodbine  
Country  
Stores

Woodbine Country Stores

MORGAN B. HODSKINS  
INSURANCE AGENCY  
ALL KINDS OF INSURANCE  
NOTARY PUBLIC

SAVE MONEY  
CALL US TODAY

INSURANCE  
TAX  
PREPARED  
CALL US TODAY

SAVE MONEY  
CALL US TODAY

7  
Photo 7. Woodbine Block, 170 Main St., Monson (MA),  
photographer facing northeast.

APR 16 1990



ERECTED BY S.F. OUSHMAN.

1886

8

Photo 8. Cushman Fountain, Main St., Monson (MA),  
photographer facing northeast.

APR 16 1990



9

Photo 9. Memorial Hall, 198 Main St., Monson (MA),  
photographer facing northeast.

9

APR 16 1990

## Missing Core Documentation

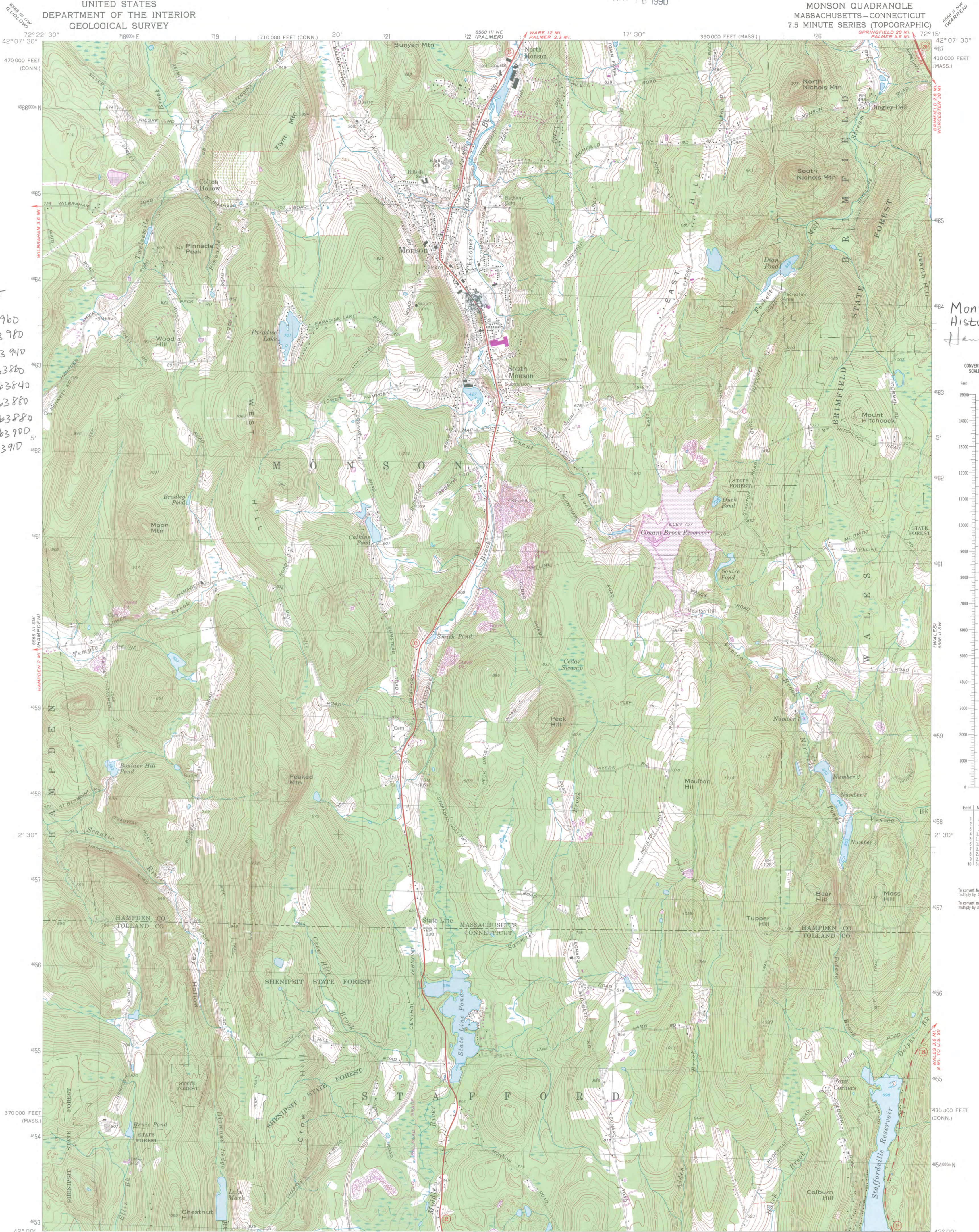
<b>Property Name</b>	<b>County, State</b>	<b>Reference Number</b>
Monson Center Historic District	Hampden County, Massachusetts	90000788

The following Core Documentation is missing from this entry:

Nomination Form

Photographs (missing #1 and 5-6)

USGS Map



MONSON CENTER  
HISTORIC DISTRICT

A 18	722060	4663960
B 18	722110	4663980
C 18	722140	4663940
D 18	722200	4663880
E 18	722140	4663840
F 18	722120	4663880
G 18	722080	4663880
H 18	722060	4663900
I 18	722080	4663910

Monson Center  
Historic District.  
Hampden Co MA

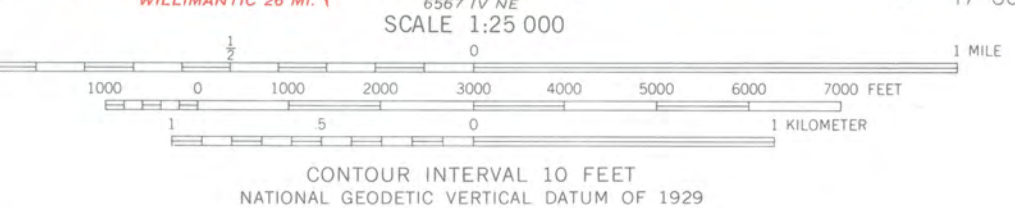
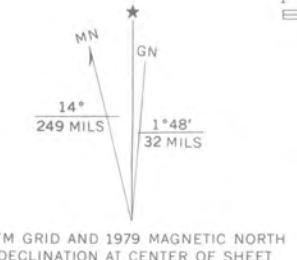
CONVERSION  
SCALES



Feet	Meters
1	3048
2	6096
3	9144
4	12192
5	15240
6	18288
7	21336
8	24384
9	27432
10	30480

To convert feet to meters multiply by 3048  
To convert meters to feet multiply by 3.2808

Mapped, edited, and published by the Geological Survey  
Revised in cooperation with Massachusetts Department of Public Works  
Control by USGS, USC&GS, and Massachusetts Geodetic Survey  
Topography by planetable surveys 1942-1943. Revised from aerial  
photographs taken 1966. Field checked 1967  
Polyconic projection. 1927 North American datum  
10,000-foot grids based on Massachusetts coordinate system,  
mainland zone, and Connecticut coordinate system  
1000-meter Universal Transverse Mercator grid,  
zone 18  
Fine red dashed lines indicate selected fence and field lines where  
generally visible on aerial photographs. This information is unchecked  
There may be private inholdings within the boundaries of  
the National or State reservations shown on this map



ROAD CLASSIFICATION

Primary highway, all weather, hard surface	Light-duty road, all weather, improved surface
Secondary highway, all weather, hard surface	Unimproved road, fair or dry weather
U.S. Route	State Route

THIS MAP COMPLIES WITH NATIONAL MAP ACCURACY STANDARDS  
FOR SALE BY U.S. GEOLOGICAL SURVEY, RESTON, VIRGINIA 22092  
A FOLDER DESCRIBING TOPOGRAPHIC MAPS AND SYMBOLS IS AVAILABLE ON REQUEST

Revisions shown in purple compiled in cooperation with the State of  
Massachusetts agencies from aerial photographs taken 1975 and other  
source data. This information not field checked. Map edited 1979

MONSON, MASS.-CONN.  
N4200-W7215/7.5

1967  
PHOTOREVISED 1979  
AMS 6568 III SE-SERIES V814







6-1-1990  
APR 16 1990  
NATIONAL REGISTER

April 6, 1990

Carol Shull  
National Register of Historic Places  
Department of the Interior  
National Park Service  
P.O. Box 37127  
Washington, DC 20013-7127

Dear Ms. Shull:

Enclosed please find the following nomination:

Monson Center Historic District, Main Street, Monson (Hampden County),  
Massachusetts, 01057.

There has been no owner objection for the property listed above.

The nomination has been voted eligible by the State Review Board and has been signed by the State Historic Preservation Officer. Owners were notified of pending State Review Board consideration 30-75 days before the meeting and were afforded the opportunity to comment. Comments received to date are attached to the nomination form.

Sincerely,

Betsy Friedberg  
National Register Director  
Massachusetts Historical Commission

Enclosure:



RECEIVED

MAR 22 1991

NATIONAL  
REGISTER

March 14, 1991

Carol Shull  
National Register of Historic Places  
Department of the Interior  
National Park Service  
P.O. Box 37127  
Washington, DC 20013-7127

Dear Ms. Shull:

Enclosed please find the following nomination:

Monson Center Historic District, Monson (Hampden County),  
Massachusetts 01057

The nomination was returned by your office on April 16, 1990, for technical and substantive corrections. All changes have now been made and we are resubmitting the nomination for your review.

Sincerely,

*Betsy Friedberg*

Betsy Friedberg  
National Register Director  
Massachusetts Historical Commission

Enclosure

cc: Gregory Farmer, Pioneer Valley Planning Commission

DATE TUE, MAY 1, 1990, 5:04 PM  
NATIONAL REGISTER OF HISTORIC PLACES PROPERTY REPORT  
REFERENCE No.: 90000788

Page: 7

Control No.: 900425/gm1

PROPERTY NAME: Monson Center Historic District

OTHER NAME/ See Also: Memorial Hall  
SITE No. : *A*

MULTIPLE NAME: NOT APPLICABLE

ADDRESS/ Jct. of Main and Cushman Sts.  
BOUNDARY :

CITY: Monson

COUNTY: Hampden

STATE: MASSACHUSETTS

Restricted Location Information: Owner: PRIVATE LOCAL Resource Type: DISTRICT

Contributing Noncontributing

Buildings	4	4
Sites	0	0
Structures	1	0
Objects	2	0

Nomination/Determination Type: SINGLE RESOURCE

Nominator: STATE GOVERNMENT

Nominator Name:  
NOT APPLICABLE

Federal Agency: NOT APPLICABLE

NPS Park Name: NOT APPLICABLE

Certification: DATE RECEIVED/PENDING NOMINATION

Date: 04/16/90

Other Certification: NOT APPLICABLE

Historic Functions: RELIGION  
DOMESTIC  
COMMERCE/TRADE  
GOVERNMENT

Historic Subfunctions: RELIGIOUS STRUCTURE  
CHURCH RELATED RESIDENCE  
MULTIPLE DWELLING  
SPECIALTY STORE  
CITY HALL

Current Functions: RELIGION  
DOMESTIC  
COMMERCE/TRADE  
GOVERNMENT

Current Subfunctions: RELIGIOUS STRUCTURE  
CHURCH RELATED RESIDENCE  
MULTIPLE DWELLING  
SPECIALTY STORE  
CITY HALL

Level of LOCAL Applicable Criteria: EVENT

Significance:

*non sp. hall*  
PERSON ARCHITECTURE/ENGINEERING

Significant Person's Name: Reynolds, J. L.; Ellis, A. D

Criteria Considerations: RELIGIOUS PROPERTY  
MOVED PROPERTY

Area of Significance: ARCHITECTURE  
COMMERCE  
COMMUNITY PLANNING AND DEVELOPMENT  
POLITICS/GOVERNMENT  
RELIGION

Periods of: 1800-1824 1825-1849  
Significance: 1850-1874 1875-1899

Circa: Specific Sig. Years:

NOT APPLICABLE

Architect/Builder/Engineer/  
Designer:

Cultural Affiliation:

Flynt Building & Construction Co.

NOT APPLICABLE

Other Documentation:

NATIONAL REGISTER

HABS No. N/A

HAER No. N/A

Architectural Styles: FEDERAL  
ROMANESQUE  
LATE VICTORIAN

Describe Other Style: NOT APPLICABLE

Foundation Materials: STONE  
Wall Materials: WEATHERBOARD GRANITE  
Roof Materials: SLATE  
Other Materials: BRICK WOOD

Acreage: 3.4

UTM	Zone	Easting	Northing	Zone	Easting	Northing
Coordinates:	18/	7 22 060/	46 63 960	18/	7 22 110/	46 63 980
	18/	7 22 140/	46 63 940	18/	7 22 200/	46 63 860
	18/	7 22 140/	46 63 840	18/	7 22 120/	46 63 880
	18/	7 22 080/	46 63 880	18/	7 22 060/	46 63 900
	18/	7 22 080/	46 63 910	/	/	/

*- I think B will probably not be added & the names will be removed well want & see.*