



KROMER HOUSE

Albuquerque, New Mexico

Photograph by Harvey Hoshour

1962

Negative: Harvey Hoshour

West wall of living room before restoration;

camera faces E

Photograph #1



KROMER HOUSE

Albuquerque, New Mexico

Photograph by Harvey Hoshour

December, 1962

Negative: Harvey Hoshour

West wall of living room and master bedroom
after restoration; camera faces NE

Photograph #2



KROMER HOUSE

Albuquerque, New Mexico

Photograph by Harvey Hoshour
1968

Negative: Harvey Hoshour

East facade; camera faces W

Photograph #3



KROMER HOUSE

Albuquerque, New Mexico

Photograph by Harvey Hoshour

1968

Negative: Harvey Hoshour

Entry room on east facade; camera faces W

Photograph #4



KROMER HOUSE

Albuquerque, New Mexico

Photograph by Kathleen Brooker

July, 1980

Negative: Historic Landmarks Survey of
Albuquerque

Living room interior, facing north.

Photograph #5



KROMER HOUSE

Albuquerque, New Mexico

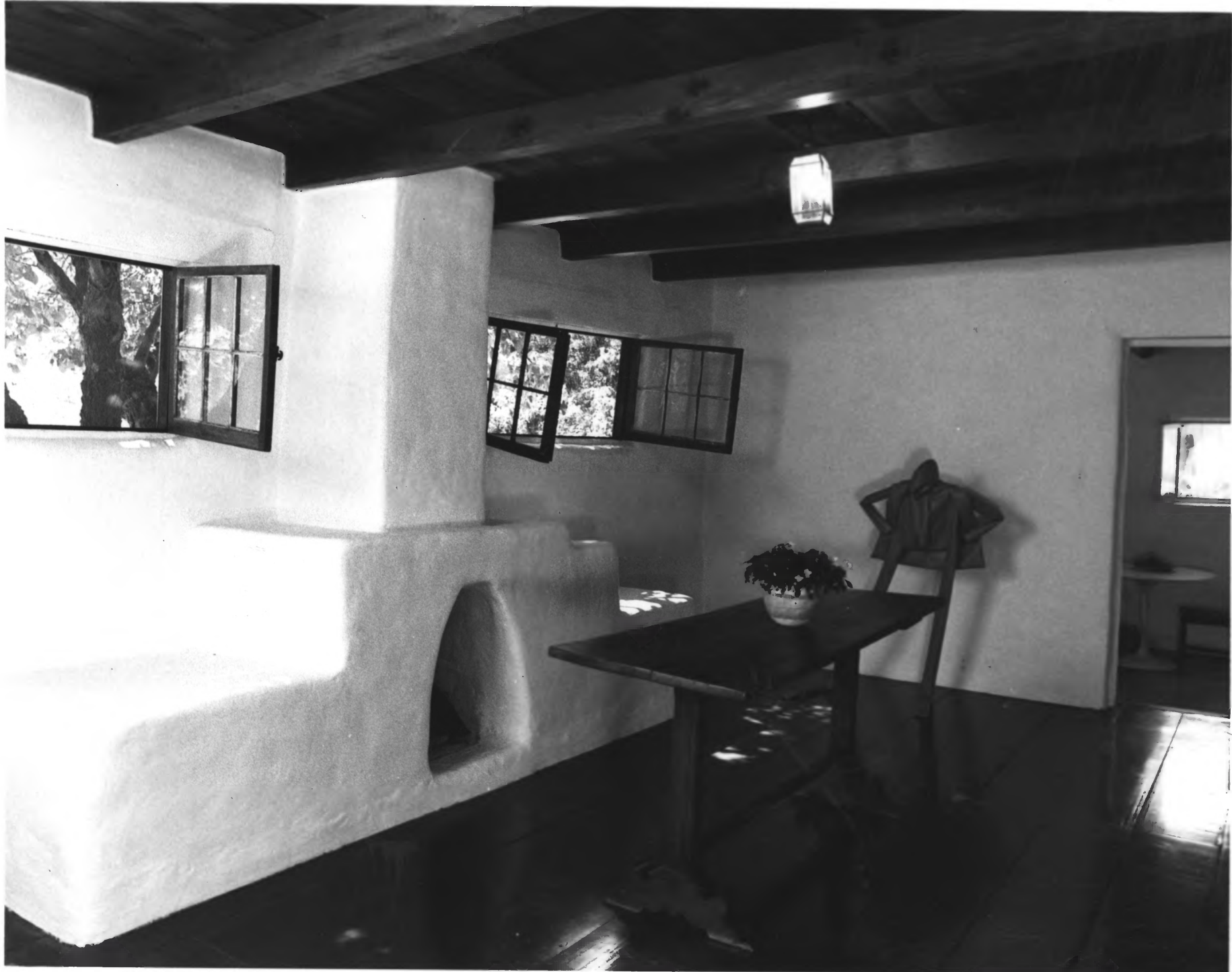
Photograph by Kathleen Brooker

July, 1980

Negative: Historic Landmarks Survey of
Albuquerque

Living room, facing south

Photograph #6



KROMER HOUSE

Albuquerque, New Mexico

Photograph by Kathleen Brooker

July, 1980

Negative: Historic Landmarks Survey of
Albuquerque

Dining room interior; camera faces SE

Photograph #7



TOM KROMER HOUSE

ALBUQ. NM

CHRISTOPHER DAVIS

JULY 29, 1980

HISTORIC LANDMARKS SURVEY - NEG.

INTERIOR, FACING EAST, SITTING ROOM
FILE 188, NEG. 10

PHOTO # 15



TOM KROMER HOUSE

ALBHQ. NM

HARVEY HOSHOUR

HARVEY HOSHOUR - NEG.

E. ELEVATION; CAMERA FACING
WEST

PHOTO #9



TOM KROMER HOUSE

ALBUQ. NM

HARVEY HOSHOUR

HARVEY HOSHOUR - NEG.

INTERSECTION OF S. ELEVATION AND
W. ELEVATION WINGS; CAMERA
FACING NORTH.

PHOTO # 10



TOM KROMER HOUSE

ALBUQ. NM

HARVEY HOSHOUR

HARVEY HOSHOUR - NEG. 5

E. ELEVATION OF HOUSE ; CAMERA
FACING SOUTH.

PHOTO #11



TOM KROMER HOUSE

ALBUQ. NM.

KATHLEEN BROOKER

JULY 24, 1980

HISTORIC LANDMARKS SURVEY - NEQ.
SHED AND GARAGE EAST OF HOUSE;
FACING EAST

PHOTO # 8

File 187, Negs 12



TOM KROMER HOUSE

ALBHQ. NM

KATHLEEN BROOKER

JULY 24, 1980

HISTORIC LANDMARKS SURVEY NEGATIVE

FILE # 187, Neg. # 10

SOUTH ELEVATION OF HOUSE (KITCHEN)
CAMERA FACING NORTH

PHOTO # 12



TOM KROMER HOUSE

ACBHQ. NM.

CHRIS DAVIS

JULY 24, 1980

HISTORIC LANDMARKS SURVEY

NEG. - File 187, Neg. 9

PATIO WEST OF HOUSE AND S. ELEVATIONS
OF HOUSE ; CAMERA FACING N.

PHOTO # 13



TOM KROMER HOUSE

ALBUQ. NM

CHRIS DAVIS

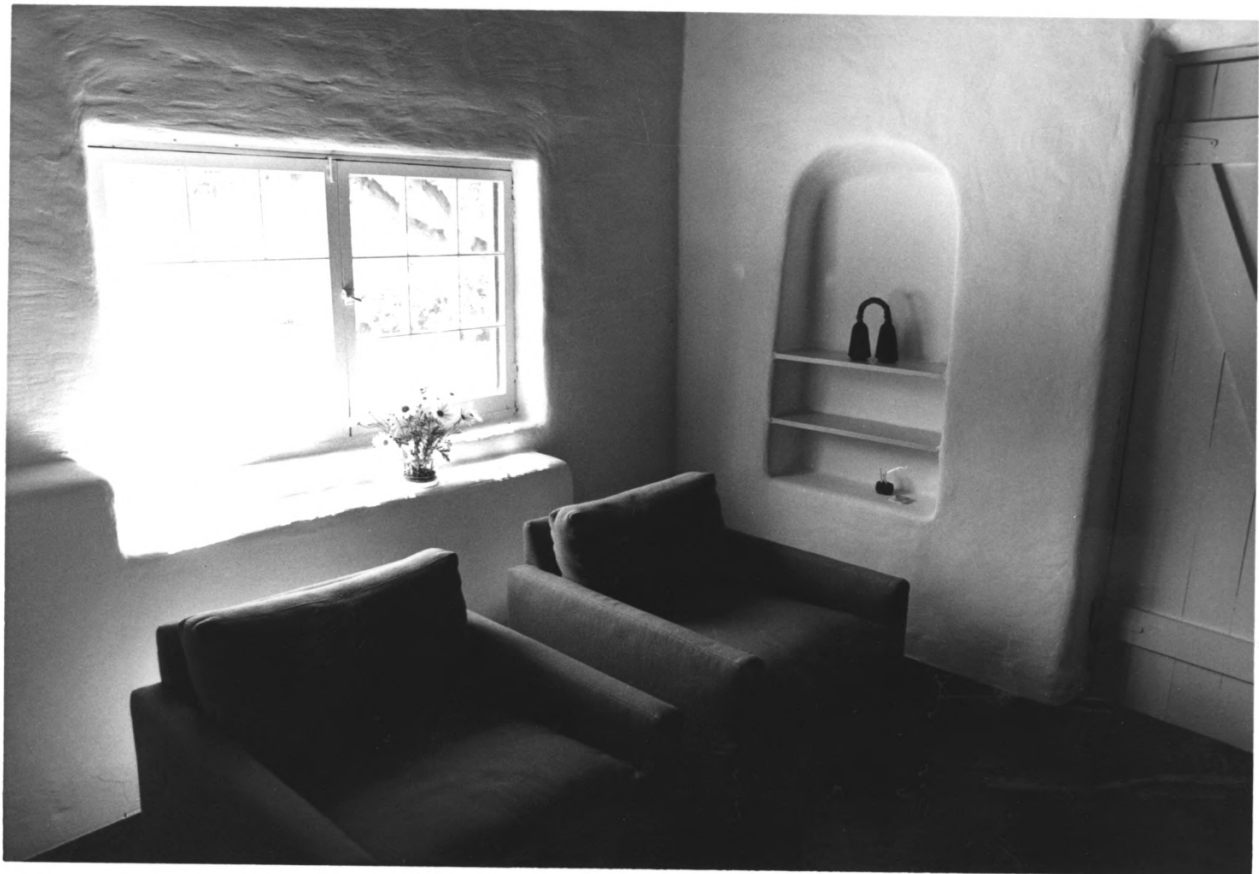
JULY 24, 1980

HISTORIC LANDMARKS SURVEY - NEG.

INTERIOR, FACING S., SITTING ROOM

PHOTO # 14

neg. file 188, Neg. 13A-14



TOM KROMER HOUSE

ALBUQ. NM

CHRIS DAVIS

JULY 24, 1980

HISTORIC LANDMARKS SURVEY - NEQ
INTERIOR, FACING SE, SITTING ROOM

PHOTO #16

16A-17
NEQ. FILE # 188, Neg. ~~13A-14~~



TOM KROMER HOUSE

ALBUQ. NM

CHRIS DAVIS

JULY 24, 1980

HISTORIC LANDMARKS SURVEY - NEQ.
INTERIOR, ENTRY HALL, FACING E.

PHOTO # 17

File 188, Neg 15A-16



KROMER HOUSE
1024 EL PUEBLO NW
WEST SIDE → ~~SOUTH~~
North

1946

KROMER HOUSE
ALBHQ. NM
PHOTOGRAPHER PROBABLY DRYPOLETT
1946
NEGATIVE: H. HOUSHOUR
CAMERA FACES SOUTH
PHOTO # 18



KROMER HOUSE
1024 EL PUEBLO NW
EAST SIDE

OLD PUMP HOUSE LEFT OF
LADDER WAS STILL THERE
in 1962.

BUTTRESS ADDED in 1947
UNDER 2 Dining - Room
WINDOWS.

FALL 1946

KROMER HOUSE
ALPHQ NM
PHOTOGRAPHER PROBABLY DRYPOUCHER
1946, FALL
NEGATIVE: H. HOSHOUR
CAMERA FACES SOUTH
PHOTO #19



KROMER HOUSE
1024 EL PUEBLO NW
WEST SIDE → NORTH
MR. DRYPOLCHER* by
AWALL WHICH WAS
NOT THERE in 1962.

MR. & MRS LOUIS DRYPOLCHER
WERE TENANTS

1946

KROMER HOUSE
ACBLQ. NM
PHOTOGRAPHER PROBABLY DRYPOLCHER
1946
NEG. : H. HOSHOUR
CAMERA FACING NORTH
PHOTO # 20



KROMER HOUSE
1024 EL POEBLO NW

MRS. DRYPOLTER in
WHAT IS NOW DINING-
ROOM.

XMAS 1946

KROMER HOUSE
ALBUQ. NM
PHOTOGRAPHER PROBABLY DRYER
1946, XMAS POLCHER
NEG. H HOSHOUR
CAMERA FACING NE
PHOTO # 21



KROMER HOUSE
1024 EL PUEBLO NW
WEST SIDE looking
SOUTH

WEEPING willow in
FOREGROUND HAD TO BE
Removed because it
WAS deceased.

HOSHOUR added MECHA-
NICAL ROOM in corner WALL.
1946

KROMER HOUSE
ALBUQ. NM
PHOTOGRAPHER PROBABLY ~~DRYFOLECHER~~
1946.
NEGATIVE: H. HOSHOUR
CAMERA FACES SOUTH
PHOTO #1922