



85-7-210

South Londonderry Village HD  
South Londonderry, Vermont  
Credit: Everett Vaile

Date: 1906

Negative filed at Vermont Division  
for Historic Preservation

Description: NW quarter of village  
from District #12 School (#74) to  
Landman's Store (#23); view looking  
NE

Photograph 1





85-A-210

South Londonderry Village HD  
South Londonderry, Vermont  
Credit: Everett Vaile

Date: 1906

Negative filed at Vermont Division  
for Historic Preservation

Description: West central quarter of  
village from Peabody House (#25) to  
Sifter office (#31); view looking NE

Photograph 2



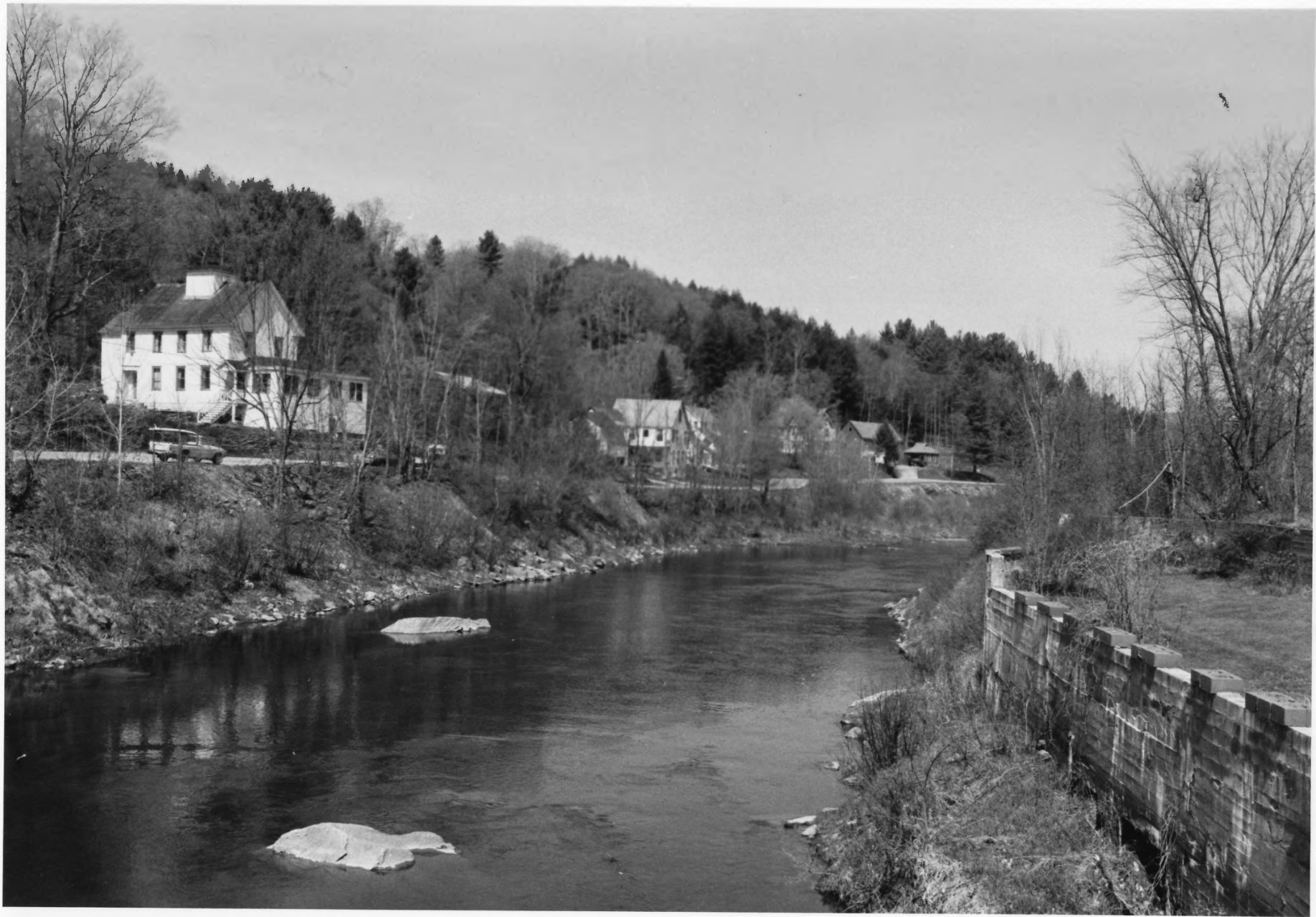


South Londonderry Village HD  
South Londonderry, Vermont  
Credit: Everett Vaile  
Date: 1906

Negative filed at Vermont Division  
for Historic Preservation  
Description: SE half of village from  
Hugh Vaile House (#34) to Otis  
Cummings House (#70); view looking E  
Photograph 3

85-A-210





85-A-134

South Londonderry Village HD

South Londonderry, Vermont

Credit: Hugh Henry

Date: May 1985

Negative filed at Vermont Division  
for Historic Preservation

Description: West River and River  
Street from ex-District #12 School  
(#74) to mill site (#9); view looking  
W

Photograph 4





85-A-130

South Londonderry Village HD  
South Londonderry, Vermont

Credit: Hugh Henry

Date: April 1985

Negative filed at Vermont Division  
for Historic Preservation

Description: West River, Main River  
Streets from G.G. Smith House (#26)  
to Howard Pierce House (#64); view  
looking SE

Photograph 5





85A-B4

South Londonderry Village HD  
South Londonderry, Vermont  
Credit: Hugh Henry  
Date: May 1985  
Negative filed at Vermont Division  
for Historic Preservation  
Description: West River and Main  
Street from village center to  
Aldrich-Lyman House (#39); view  
looking NW  
Photograph 6





South Londonderry Village HD

South Londonderry, Vermont

Credit: Hugh Henry

Date: May 1985

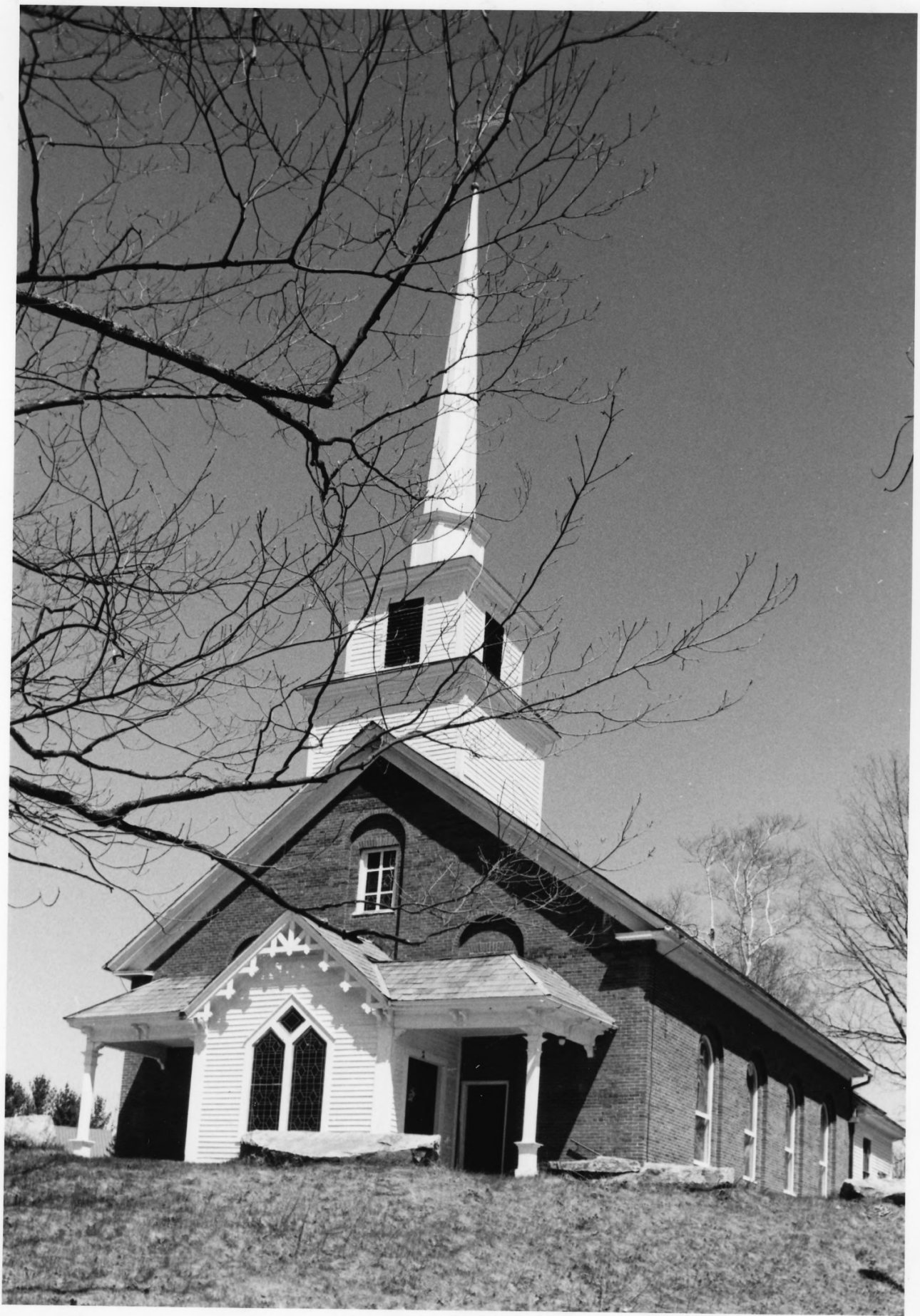
Negative filed at Vermont Division  
for Historic Preservation

Description: Village center from  
Bradford Rawson House (#73) to  
ex-Railroad Station (#61); view  
looking N

Photograph 7

85-A-134





South Londonderry Village HD  
South Londonderry, Vermont  
Credit: Hugh Henry  
Date: April 1985  
Negative filed at Vermont Division  
for Historic Preservation  
Description: Baptist Church (#1) S,E  
Elevations; view looking N  
Photograph 8

85-A-133





85-A-133

South Londonderry Village HD  
South Londonderry, Vermont  
Credit: Hugh Henry  
Date: April 1985  
Negative filed at Vermont Division  
for Historic Preservation  
Description: Bryant-Pierce House (#2)  
S elevation; view looking N  
Photograph 9





South Londonderry Village HD  
South Londonderry, Vermont

Credit: Hugh Henry

Date: May 1985

Negative filed at Vermont Division  
for Historic Preservation

Description: ex-Fire Station (#3) N,  
Elevations; view looking SE

Photograph 10

85-H-134







South Londonderry Village HD

South Londonderry, Vermont

Credit: Hugh Henry

Date: April 1985

Negative filed at Vermont Division  
for Historic Preservation

Description: Burt Fuller House (#4)

W, S elevations; view looking NE

Photograph 11

85-7-130



Edmund  
M. Adams  
Dentist

85-A-B2

South Londonderry Village HD  
South Londonderry, Vermont

Credit: Hugh Henry

Date: April 1985

Negative filed at Vermont Division  
for Historic Preservation

Description: Hannah Livermore House  
(#5) S, E elevations; view looking NW  
Photograph 12





85-A-32

South Londonderry Village HD  
South Londonderry, Vermont  
Credit: Hugh Henry  
Date: April 1985  
Negative filed at Vermont Division  
for Historic Preservation  
Description: Ernest Davis House (#6)  
S, E elevations; view looking NW  
Photograph 13







85-A-131

South Londonderry Village HD  
South Londonderry, Vermont  
Credit: Hugh Henry  
Date: April 1985  
Negative filed at Vermont Division  
for Historic Preservation  
Description: Abbott-Landman House  
(#8) S, E elevations; view looking NW  
Photograph 14



South Londonderry Village HD

South Londonderry, Vermont

Credit: Hugh Henry

Date: April 1985

Negative filed at Vermont Division  
for Historic Preservation

Description: Tyler House (#10) E, N  
elevations; view looking SW

Photograph 15

85A-133





85-A-133

South Londonderry Village HD  
South Londonderry, Vermont

Credit: Hugh Henry

Date: April 1985

Negative filed at Vermont Division  
for Historic Preservation

Description: Tyler House, Barn (#10,  
10A) E, N elevations; view looking SW  
Photograph 16







85-A-133

South Londonderry Village HD  
South Londonderry, Vermont  
Credit: Hugh Henry  
Date: April 1985

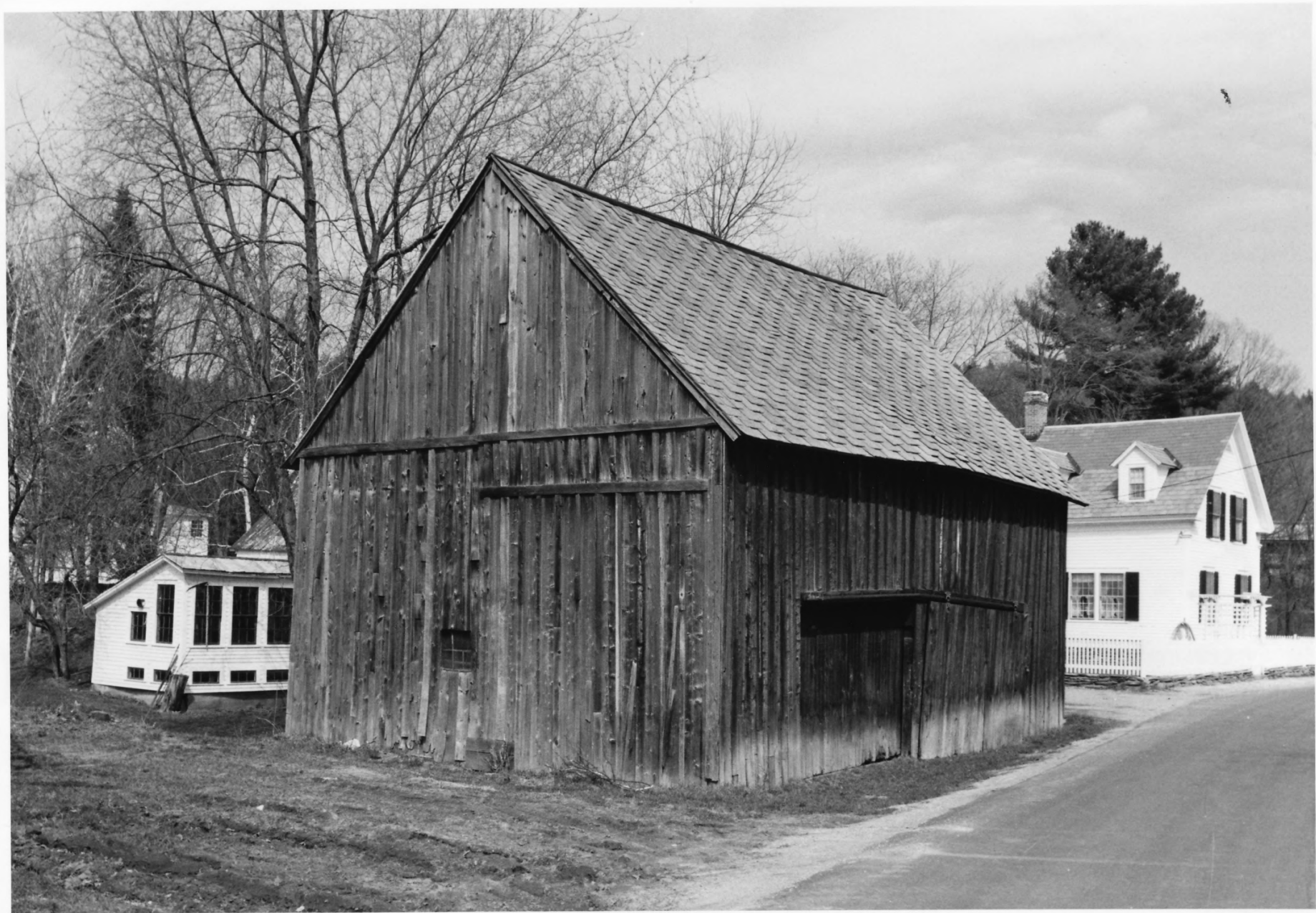
Negative filed at Vermont Division  
for Historic Preservation  
Description: Johnson-Landman House  
(#11) S, E elevations; view looking  
NW  
Photograph 17



85A-132

South Londonderry Village HD  
South Londonderry, Vermont  
Credit: Hugh Henry  
Date: April 1985  
Negative filed at Vermont Division  
for Historic Preservation  
Description: Addison Cudworth House  
(#13) S, E elevations; view looking  
NW  
Photograph 18





South Londonderry Village HD

South Londonderry, Vermont

Credit: Hugh Henry

Date: April 1985

Negative filed at Vermont Division  
for Historic Preservation

Description: Addison Cudworth Barn  
(#13B) W, S elevations; view looking

NE

Photograph 19

85-A-130





85-A-133

South Londonderry Village HD  
South Londonderry, Vermont

Credit: Hugh Henry

Date: April 1985

Negative filed at Vermont Division  
for Historic Preservation

Description: Baptist Parsonage (#15)

S, E elevations; view looking NW

Photograph 20



85A-133

South Londonderry Village HD  
South Londonderry, Vermont  
Credit: Hugh Henry  
Date: April 1985  
Negative filed at Vermont Division  
for Historic Preservation  
Description: Frances Aldrich House,  
Garage (#16, 16A) S, E elevations;  
view looking NW  
Photograph 21





85-A-133

South Londonderry Village HD  
South Londonderry, Vermont

Credit: Hugh Henry

Date: April 1985

Negative filed at Vermont Division  
for Historic Preservation

Description: Anson Hayward House  
(#17) S, E elevations; view looking

NW

Photograph 22







South Londonderry Village HD

South Londonderry, Vermont

Credit: Hugh Henry

Date: April 1985

Negative filed at Vermont Division  
for Historic Preservation

Description: Joseph Capen House,

Garage (#18, 18A) W, S elevations;

view looking NE

Photograph 23

85-A-133



85-A-130

South Londonderry Village HD  
South Londonderry, Vermont

Credit: Hugh Henry

Date: April 1985

Negative filed at Vermont Division  
for Historic Preservation

Description: Dr. Benjamin Millington  
House (#19) W, S elevations; view  
looking NE

Photograph 24





85-A-130

South Londonderry Village HD  
South Londonderry, Vermont  
Credit: Hugh Henry  
Date: April 1985  
Negative filed at Vermont Division  
for Historic Preservation  
Description: Alice Parker House (#21)  
W, S elevations; view looking NE  
Photograph 25





85-A-134

South Londonderry Village HD  
South Londonderry, Vermont  
Credit: Hugh Henry  
Date: May 1985  
Negative filed at Vermont Division  
for Historic Preservation  
Description: Casper Landman House  
(#22) W, S elevations; view looking  
NE  
Photograph 26



South Londonderry Village HD  
South Londonderry, Vermont  
Credit: Hugh Henry  
Date: April 1985  
Negative filed at Vermont Division  
for Historic Preservation  
Description: Landman's Store (#23) W,  
S elevations; view looking NE  
Photograph 27

85-A-130





85A-131

South Londonderry Village HD  
South Londonderry, Vermont  
Credit: Hugh Henry  
Date: April 1985  
Negative filed at Vermont Division  
for Historic Preservation  
Description: Pierce-Chase-Pearson  
House (#24) S, E elevations; view  
looking N  
Photograph 28





85-A-131

South Londonderry Village HD  
South Londonderry, Vermont  
Credit: Hugh Henry  
Date: April 1985  
Negative filed at Vermont Division  
for Historic Preservation  
Description: George G. Smith House  
(#26) S, E elevations; view looking N  
Photograph 29



85-A-134

South Londonderry Village HD  
South Londonderry, Vermont  
Credit: Hugh Henry  
Date: May 1985  
Negative filed at Vermont Division  
for Historic Preservation  
Description: Frank Pierce House,  
Garage (#27, 27A) W, S, E elevations;  
view looking NE  
Photograph 30





South Londonderry Village HD  
South Londonderry, Vermont

Credit: Hugh Henry

Date: April 1985

Negative filed at Vermont Division  
for Historic Preservation

Description: George G. Smith Block  
(#28) S, E elevations; view looking N  
Photograph 31

85-A-130





85-A-131

South Londonderry Village HD

South Londonderry, Vermont

Credit: Hugh Henry

Date: April 1985

Negative filed at Vermont Division  
for Historic Preservation

Description: ex-Hunt's Garage (#29)

S, E elevations; view looking N

Photograph 32



85-A-134

South Londonderry Village HD

South Londonderry, Vermont

Credit: Hugh Henry

Date: May 1985

Negative filed at Vermont Division  
for Historic Preservation

Description: Henry Darling House  
(#30) W, S elevations; view looking

NE

Photograph 33





85-A-131

South Londonderry Village HD  
South Londonderry, Vermont  
Credit: Hugh Henry  
Date: April 1985  
Negative filed at Vermont Division  
for Historic Preservation  
Description: ex-Londonderry Sifter  
Office®Prouty House (#31) S, E  
elevations; view looking N  
Photograph 34







South Londonderry Village HD  
South Londonderry, Vermont

Credit: Hugh Henry

Date: April 1985

Negative filed at Vermont Division  
for Historic Preservation

Description: ex-McAllister

House/South Londonderry Library (#32)

S, E elevations; view looking N

Photograph 35

85-A-131



85-A-130

South Londonderry Village HD  
South Londonderry, Vermont

Credit: Hugh Henry

Date: April 1985

Negative filed at Vermont Division  
for Historic Preservation

Description: Hugh Vaile House, Barn  
(#34, 34A) S, E elevations; view  
looking N

Photograph 36





85-A-133

South Londonderry Village HD  
South Londonderry, Vermont  
Credit: Hugh Henry  
Date: April 1985

Negative filed at Vermont Division  
for Historic Preservation  
Description: Osro Clayton House (#35)  
S, E elevations; view looking NW  
Photograph 37







85-A-130

South Londonderry Village HD  
South Londonderry, Vermont  
Credit: Hugh Henry  
Date: April 1985  
Negative filed at Vermont Division  
for Historic Preservation  
Description: Osro Clayton Barn (#356)  
W, S elevations; view looking N  
Photograph 38



South Londonderry Village HD  
South Londonderry, Vermont

Credit: Hugh Henry

Date: April 1985

Negative filed at Vermont Division  
for Historic Preservation

Description: ex-Central School/Town

Office Building (#36) W, S  
elevations; view looking N

Photograph 39

85-A-130





85A-131

South Londonderry Village HD  
South Londonderry, Vermont

Credit: Hugh Henry

Date: April 1985

Negative filed at Vermont Division  
for Historic Preservation

Description: Homer Stuart House (#37)

S, E elevations; view looking N

Photograph 40







85A-130

South Londonderry Village HD  
South Londonderry, Vermont  
Credit: Hugh Henry  
Date: April 1985  
Negative filed at Vermont Division  
for Historic Preservation  
Description: George Dudley House  
(#38) S, E elevations; view looking N  
Photograph 41



85-7-130

South Londonderry Village HD  
South Londonderry, Vermont  
Credit: Hugh Henry  
Date: April 1985  
Negative filed at Vermont Division  
for Historic Preservation  
Description: Aldrich-Lyman House  
(#39) S, E elevations; view looking N  
Photograph 42





South Londonderry Village HD  
South Londonderry, Vermont  
Credit: Hugh Henry  
Date:

Negative filed at Vermont Division  
for Historic Preservation  
Description: Dr. Elizabeth Pingree  
House (#40) S, E elevations; view  
looking N  
Photograph 43

85-A-130







85-A-131

South Londonderry Village HD

South Londonderry, Vermont

Credit: Hugh Henry

Date: April 1985

Negative filed at Vermont Division  
for Historic Preservation

Description: George Shanks House,  
Garage (#41, 41A) S, E elevations;  
view looking N

Photograph 44



85-7-131

South Londonderry Village HD  
South Londonderry, Vermont  
Credit: Hugh Henry  
Date: April 1985  
Negative filed at Vermont Division  
for Historic Preservation  
Description: Frank Simonds House  
(#42) S, E elevations; view looking N  
Photograph 45





85-A-131

South Londonderry Village HD  
South Londonderry, Vermont

Credit: Hugh Henry

Date: April 1985

Negative filed at Vermont Division  
for Historic Preservation

Description: Alfred Rawson House

(#43) S, E elevations; view looking N

Photograph 46







South Londonderry Village HD

South Londonderry, Vermont

Credit: Hugh Henry

Date: April 1985

Negative filed at Vermont Division  
for Historic Preservation

Description: George Shattuck House  
(#44) S, E elevations; view looking N

Photograph 47

85-A-B1



85-A-131

South Londonderry Village HD

South Londonderry, Vermont

Credit: Hugh Henry

Date: April 1985

Negative filed at Vermont Division  
for Historic Preservation

Description: Pierce-Thompson House  
(#45) S, E elevations; view looking  
NW

Photograph 48





85-A-B/

South Londonderry Village HD  
South Londonderry, Vermont  
Credit: Hugh Henry  
Date: April 1985  
Negative filed at Vermont Division  
for Historic Preservation  
Description: Loren Pierce House (#46)  
S, E elevations; view looking NW  
Photograph 49







85-A-131

South Londonderry Village HD  
South Londonderry, Vermont  
Credit: Hugh Henry  
Date: April 1985  
Negative filed at Vermont Division  
for Historic Preservation  
Description: Garfield House (#47) S,  
E elevations; view looking NW  
Photograph 50



South Londonderry Village HD  
South Londonderry, Vermont

Credit: Hugh Henry

Date: April 1985

Negative filed at Vermont Division  
for Historic Preservation

Description: Frank Clough House, Barn  
(#48, 48A) S, E elevations; view

looking NW

Photograph 51

85-A-133





85-A-B1

South Londonderry Village HD  
South Londonderry, Vermont

Credit: Hugh Henry

Date: April 1985

Negative filed at Vermont Division  
for Historic Preservation

Description: James Works Cottage  
(#49) S, E elevations; view looking

NW

Photograph 52







85-A-131

South Londonderry Village HD  
South Londonderry, Vermont  
Credit: Hugh Henry  
Date: April 1985  
Negative filed at Vermont Division  
for Historic Preservation  
Description: Chase-Wiley House (#50)  
S, E elevations; view looking NW  
Photograph 53



85-A-134

South Londonderry Village HD  
South Londonderry, Vermont  
Credit: Hugh Henry  
Date: May 1985  
Negative filed at Vermont Division  
for Historic Preservation  
Description: Whitman-Ramsdell House,  
Barn (#51, 51A) W, S elevations; view  
looking NE  
Photograph 54





South Londonderry Village HD  
South Londonderry, Vermont  
Credit: Hugh Henry  
Date: May 1985  
Negative filed at Vermont Division  
for Historic Preservation  
Description: ex-Baptist  
Church/Wiley's Garage (#53) E, N  
elevations; view looking SW  
Photograph 55

85-A-134





85-A-131

South Londonderry Village HD  
South Londonderry, Vermont  
Credit: Hugh Henry  
Date: April 1985  
Negative filed at Vermont Division  
for Historic Preservation  
Description: ex-Baptist Church (#53)  
interior remnant of original  
auditorium at E end of 2nd story;  
view looking NE  
Photograph 56



85-A-134

South Londonderry Village HD  
South Londonderry, Vermont  
Credit: Hugh Henry  
Date: May 1985  
Negative filed at Vermont Division  
for Historic Preservation  
Description: ex-West River Creamery  
(#54) E, N elevations; view looking  
SW  
Photograph 57





85-A-134

South Londonderry Village HD

South Londonderry, Vermont

Credit: Hugh Henry

Date: May 1985

Negative filed at Vermont Division  
for Historic Preservation

Description: ex-"Box Shop" (#55) N, W  
elevations; view looking S

Photograph 58







South Londonderry Village HD  
South Londonderry, Vermont

Credit: Hugh Henry

Date: April 1985

Negative filed at Vermont Division  
for Historic Preservation

Description: Leslie Benson House  
(#56) N, W elevations; view looking S

Photograph 59

85-A-132



85A-32

South Londonderry Village HD  
South Londonderry, Vermont

Credit: Hugh Henry

Date: April 1985

Negative filed at Vermont Division  
for Historic Preservation

Description: Fire Station (#57) N, W  
elevations; view looking S

Photograph 60





85-A-130

South Londonderry Village HD  
South Londonderry, Vermont  
Credit: Hugh Henry  
Date: April 1985  
Negative filed at Vermont Division  
for Historic Preservation  
Description: ex-Farmers' Exchange  
(#59) W, S elevations; view looking E  
Photograph 61







85-A-133

South Londonderry Village HD  
South Londonderry, Vermont

Credit: Hugh Henry

Date: April 1985

Negative filed at Vermont Division  
for Historic Preservation

Description: ex-"Coffin Shop" (#60)

S, E elevations; view looking N

Photograph 62



South Londonderry Village HD

South Londonderry, Vermont

Credit: Hugh Henry

Date: May 1985

Negative filed at Vermont Division  
for Historic Preservation

Description: ex-RAilroad Station  
(#61) N, W elevations; view looking S  
Photograph 63

85-A-134





85-A-132

South Londonderry Village HD  
South Londonderry, Vermont

Credit: Hugh Henry

Date: April 1985

Negative filed at Vermont Division  
for Historic Preservation

Description: H. R. Davis (#65) and H.  
Pierce (#64) Houses E, N elevations;  
view looking W

Photograph 64







85-4-132

South Londonderry Village HD  
South Londonderry, Vermont

Credit: Hugh Henry

Date: April 1985

Negative filed at Vermont Division  
for Historic Preservation

Description: George Curtis House  
(#66) E, N elevations; view looking  
SW

Photograph 65



South Londonderry Village HD  
South Londonderry, Vermont  
Credit: Hugh Henry  
Date: April 1985  
Negative filed at Vermont Division  
for Historic Preservation  
Description: Albert Davis House (#68)  
E, N elevations; view looking SW  
Photograph 66

85-7-132





South Londonderry Village HD

South Londonderry, Vermont

Credit: Hugh Henry

Date: April 1985

Negative filed at Vermont Division  
for Historic Preservation

Description: F. O. Pierce House (#69)

N, W elevations; view looking S

Photograph 67

85#132







85-A-139

South Londonderry Village HD  
South Londonderry, Vermont  
Credit: Hugh Henry  
Date: May 1985  
Negative filed at Vermont Division  
for Historic Preservation  
Description: Otis Cummings House,  
Shed (#70, 70A) N, W elevations; view  
looking SE  
Photograph 68



85-A-133

South Londonderry Village HD  
South Londonderry, Vermont  
Credit: Hugh Henry  
Date: April 1985  
Negative filed at Vermont Division  
for Historic Preservation  
Description: Babbitt-Aldrich House  
(#71) S, E elevations; view looking  
NW  
Photograph 69





South Londonderry Village HD  
South Londonderry, Vermont

Credit: Hugh Henry

Date: April 1985

Negative filed at Vermont Division  
for Historic Preservation

Description: Babbitt-Aldrich (#71)  
S, E. elevations; view looking NW  
Photograph 70

85-A-133







85-A-133

South Londonderry Village HD  
South Londonderry, Vermont

Credit: Hugh Henry

Date: April 1985

Negative filed at Vermont Division  
for Historic Preservation

Description: ex-Melendy

House/Londonderry Inn (#72) S, E  
elevations; view looking NW

Photograph 71



85-A-134

South Londonderry Village HD  
South Londonderry, Vermont  
Credit: Hugh Henry  
Date: May 1985  
Negative filed at Vermont Division  
for Historic Preservation  
Description: Bradford Rawson House  
(#73) E, N elevations; view looking  
SW  
Photograph 72





85-A-32

South Londonderry Village HD

South Londonderry, Vermont

Credit: Hugh Henry

Date: April 1985

Negative filed at Vermont Division  
for Historic Preservation

Description: ex-District #12 School  
(#74) E, N elevations; view looking

SW

Photograph 73







South Londonderry Village HD  
South Londonderry, Vermont

Credit: Hugh Henry

Date: April 1985

Negative filed at Vermont Division  
for Historic Preservation

Description: A. P. Cutting House  
(#76) E, N elevations; view looking

SW

Photograph 74

85-A-B2



85-A-134

South Londonderry Village HD  
South Londonderry, Vermont

Credit: Hugh Henry

Date: May 1985

Negative filed at Vermont Division  
for Historic Preservation

Description: James Clough House (#77)  
E, N elevations; view looking SW

Photograph 75





85-A-B2

South Londonderry Village HD  
South Londonderry, Vermont  
Credit: Hugh Henry  
Date: April 1985  
Negative filed at Vermont Division  
for Historic Preservation  
Description: Barnes House, Barn (#78,  
78A) E, N elevations; view looking SW  
Photograph 76







85A-B2

South Londonderry Village HD  
South Londonderry, Vermont  
Credit: Hugh Henry  
Date: April 1985  
Negative filed at Vermont Division  
for Historic Preservation  
Description: Vaile-Cobb House (#79)  
S, E elevations; view looking W  
Photograph 77



South Londonderry Village HD  
South Londonderry, Vermont

Credit: Hugh Henry

Date: April 1985

Negative filed at Vermont Division  
for Historic Preservation

Description: Vaile-Cobb Barn, Garage  
(79A, 79B) S, E elevations; view

looking W

Photograph 78

85A-B2