



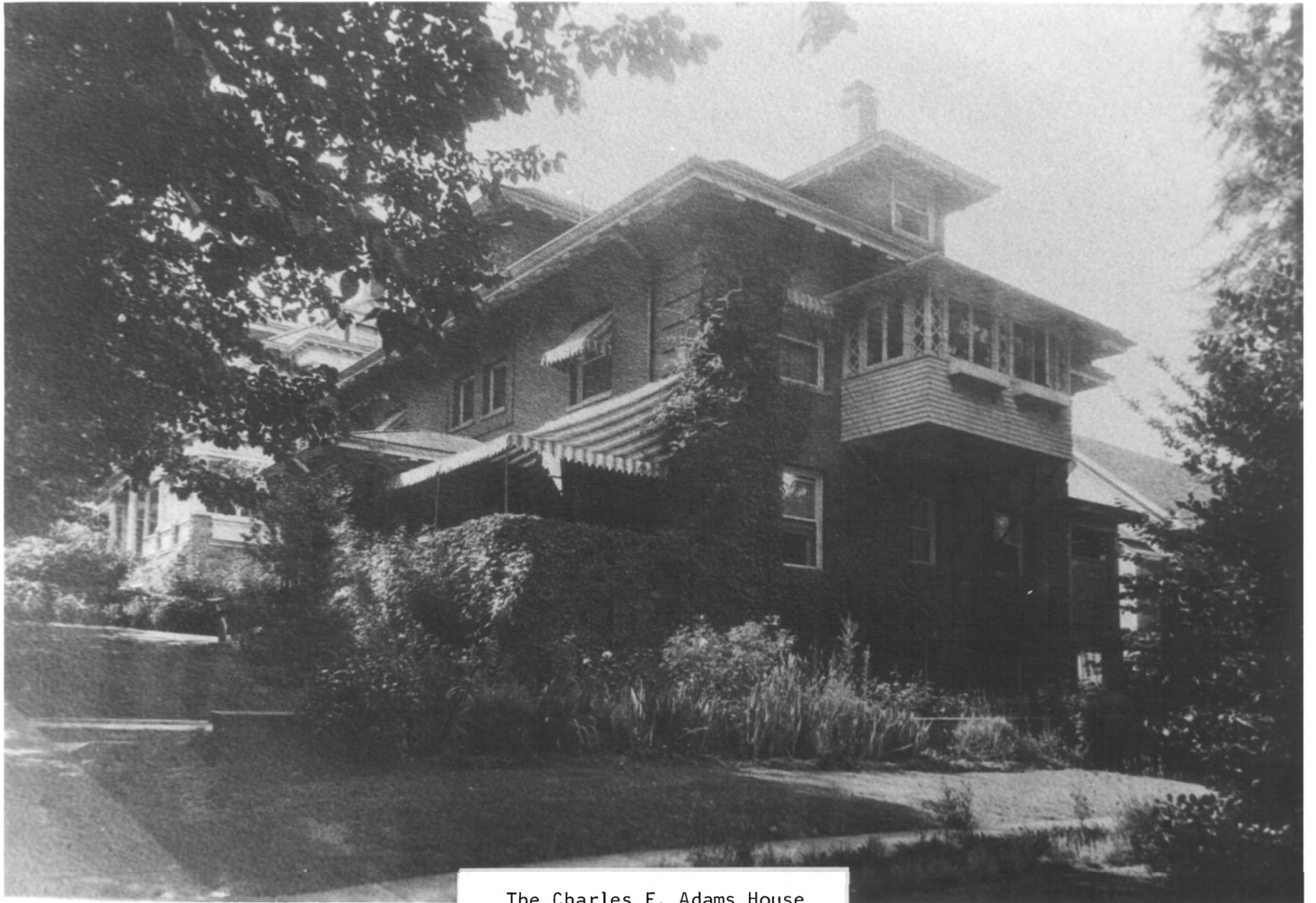
The Charles F. Adams House
1924

Adams, Charles F., House
2363 NW Flanders
Portland, Multnomah County, Oregon

1 of 13 NOV 24 1981
Historic view, 1924, photographer
unknown, west and south (front)
elevations.

Copy negative: Dr. Eugene Perrin
 2925 SW Montgomery
 Portland, OR 97201

DEC 9 1981



The Charles F. Adams House

1924

Adams, Charles F., House
2363 NW Flanders
Portland, Multnomah County, Oregon

DEC 9 1981

2 of 13

NOV 24 1981

Historic view, 1924, photographer unknown. South (front) and east end elevations, showing Bates-Seller House on west.

Copy Negative: Dr. Eugene Perrin
2925 SW Montgomery
Portland, OR 97201



Flanders Street
Convalescent Home
1979

Adams, Charles F., House
2363 NW Flanders
Portland, Multnomah County, Oregon

DEC 9 1981

3 of 13

NOV 24 1981

South (front) elevation of Flanders
Street Convalescent Home, 1979.

Dr. Eugene Perrin

2925 SW Montgomery, Portland, OR 97201



Charles F. Adams House
restoration project nearing
completion. May 1980

Adams, Charles F., House
2363 NW Flanders
Portland, Multnomah County, Oregon

DEC 9 1981

NOV 24 1981

4 of 13

West and south (front) elevations as
restored, May, 1980.

Dr. Eugene Perrin

2925 SW Montgomery, Portland, OR 97201



Charles F. Adams
Library Addition
1924

Adams, Charles F., House
2363 NW Flanders
Portland, Multnomah County, Oregon

5 of 13

Historic view of library interior, 1924.
Photographer unknown.

NOV 24 1981

Copy Negative: Dr. Eugene Perrin
2925 SW Montgomery
Portland, OR 97201

DEC 9 1981



The Charles F. Adams House
Dining Room
1924

Adams, Charles F., House
2363 NW Flanders
Portland, Multnomah County, Oregon

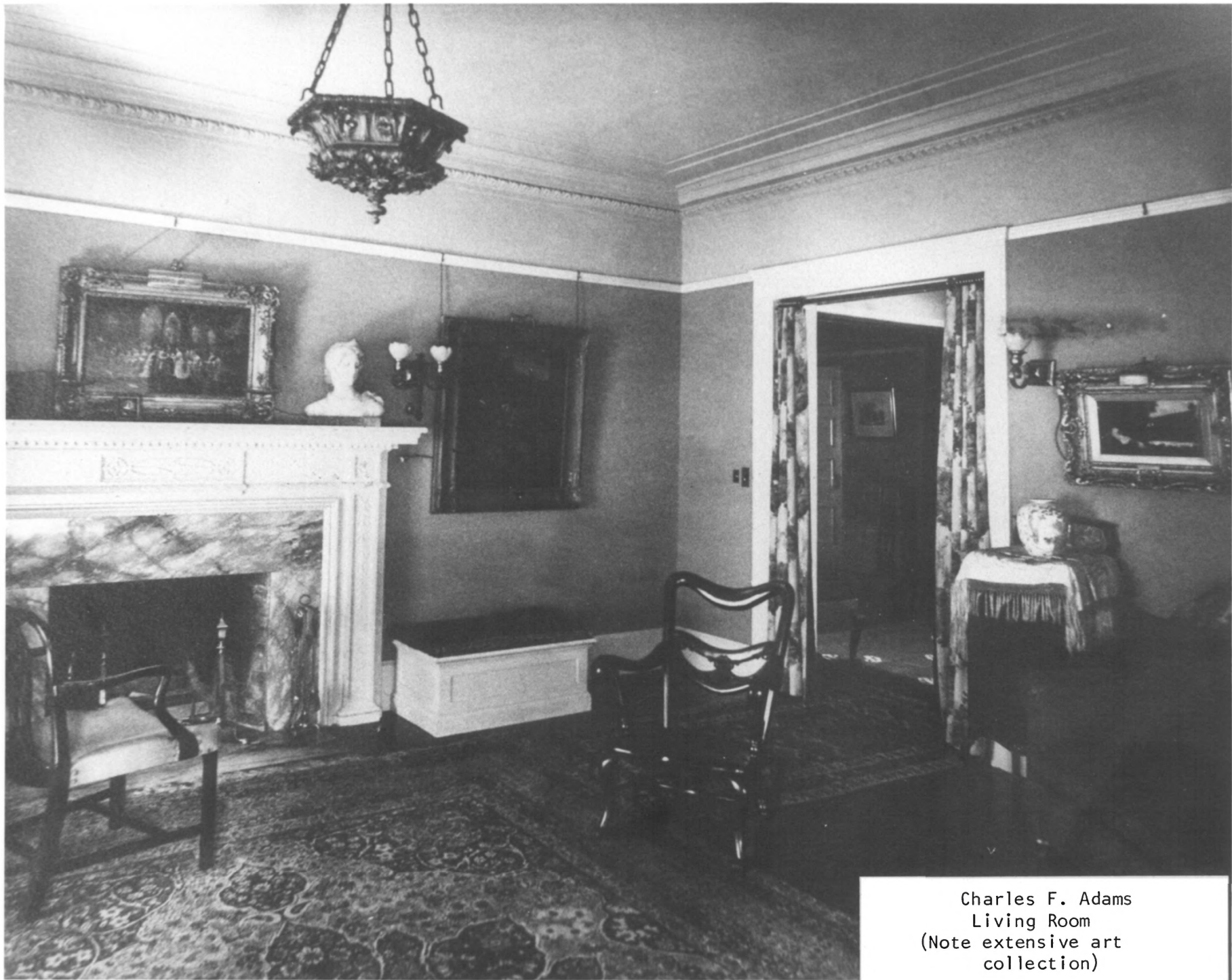
6 of 13

Historic view of dining room interior
1924. Photographer unknown.

NOV 24 1981

Copy Negative: Dr. Eugene Perrin
2925 SW Montgomery
Portland, OR 97201

DEC 9 1981



Charles F. Adams
Living Room
(Note extensive art
collection)

Adams, Charles F., House
2363 NW Flanders
Portland, Multnomah County, Oregon

7 of 13

Historic view of living room interior,
1924. Photographer unknown.

NOV 24 1981

Copy Negative: Dr. Eugene Perrin
2925 SW Montgomery
Portland, OR 97201

DEC 9 1981



Fig. 1

Adams, Charles F., House
2363 NW Flanders
Portland, Multnomah County, Oregon

DEC 9 1981

8 of 13

Restored original lighting fixture
front entrance hall, 1980.

Dr. Eugene Perrin
2925 SW Montgomery
Portland, OR 97201

NOV 24 1981



Fig. 2

Adams, Charles F., House
2363 NW Flanders
Portland, Multnomah County, Oregon

9 of 13
Double leaf doorway separating vestibule
or front entrance ahl from stairhall,
1980.

DEC 9 1981

Dr. Eugene Perrin
2925 SW Montgomery
Portland, OR 97201

NOV 24 1981



Fig. 3

Adams, Charles F., House
2363 NW Flanders
Portland, Multnomah County, Oregon

DEC 9 1981

10 of 13
Front hall staircase restored, 1980.
Dr. Eugene Perrin
2925 SW Montgomery
Portland, OR 97201

NOV 24 1981



Fig. 4

Adams, Charles F., House
2363 NW Flanders
Portland, Multnomah County, Oregon

11 of 13
Living room fireplace and Adamesque
mantelpiece; cornice molding, restored,
1980.

Dr. Eugene Perrin
2925 SW Montgomery
Portland, OR 97201

DEC 9 1981

NOV 24 1981



Fig. 5

Adams, Charles F., House
2363 NW Flanders
Portland, Multnomah County, Oregon

DEC 9 1981

12 of 13
Library fireplace, restored, 1980.
Dr. Eugene Perrin
2925 SW Montgomery
Portland, OR 97201

NOV 24 1981

THIS PAPER
MANUFACTURED
BY TODAY



Fig. 6

Adams, Charles F., House
2363 NW Flanders
Portland, Multnomah County, Oregon

13 of 13
Interior view of library window bay,
1980.

NOV 24 1981

Dr. Eugene Perrin
2925 SW Montgomery
Portland, OR 97201

DEC 9 1981