



Bomberger's Distillery  
7 mi. SW of Newmanstown off Pa. 501  
Newmanstown, Pennsylvania

Photo No. 1

By: Ralph J. Christian, AASLH

Negative at: Historic Sites Survey

Date: February 1978

View: From northeast, showing north  
sides and front (east) facades of  
Still House and Jug House and portions  
of modern structures.

*Lebanon Co. PA*

*NHL*

JAN 16 1980



Bomberger's Distillery  
7 mi. SW of Newmanstown off Pa. 501  
Newmanstown, Pennsylvania

*Gettysburg Co. Pa.*

Photo No. 2

By: Ralph J. Christian, AASLH

Negative at: Historic Sites Survey

Date: February 1978

View: From southeast, showing south side and front (east) facade of Jug House, front (east) facade of Still House, and portions of modern structures.

JAN 16 1980



Bomberger's Distillery

7 mi. SW of Newmanstown off Pa. 501

Newmanstown, Pennsylvania

*Lebanon Co. Pa*

Photo No. 3

By: Ralph J. Christian, AASLH

Negative at: Historic Sites Survey

Date: February 1978

View: From north, showing north side  
of Still House and front (east)  
facade and north side of Warehouse.

JAN 16 1980



Bomberger's Distillery  
7 mi. SW of Newmanstown off Pa. 501  
Newmanstown, Pennsylvania

*Lebanon Co Pa*  
Photo No. 4

By: Ralph J. Christian, AASLH  
Negative at: Historic Sites Survey  
Date: February 1978

View: From southeast, showing south  
side and front (east) facade of  
Warehouse.

JAN 16 1980





Bomberger's Distillery  
7 mi. SW of Newmanstown off Pa. 501  
Newmanstown, Pennsylvania

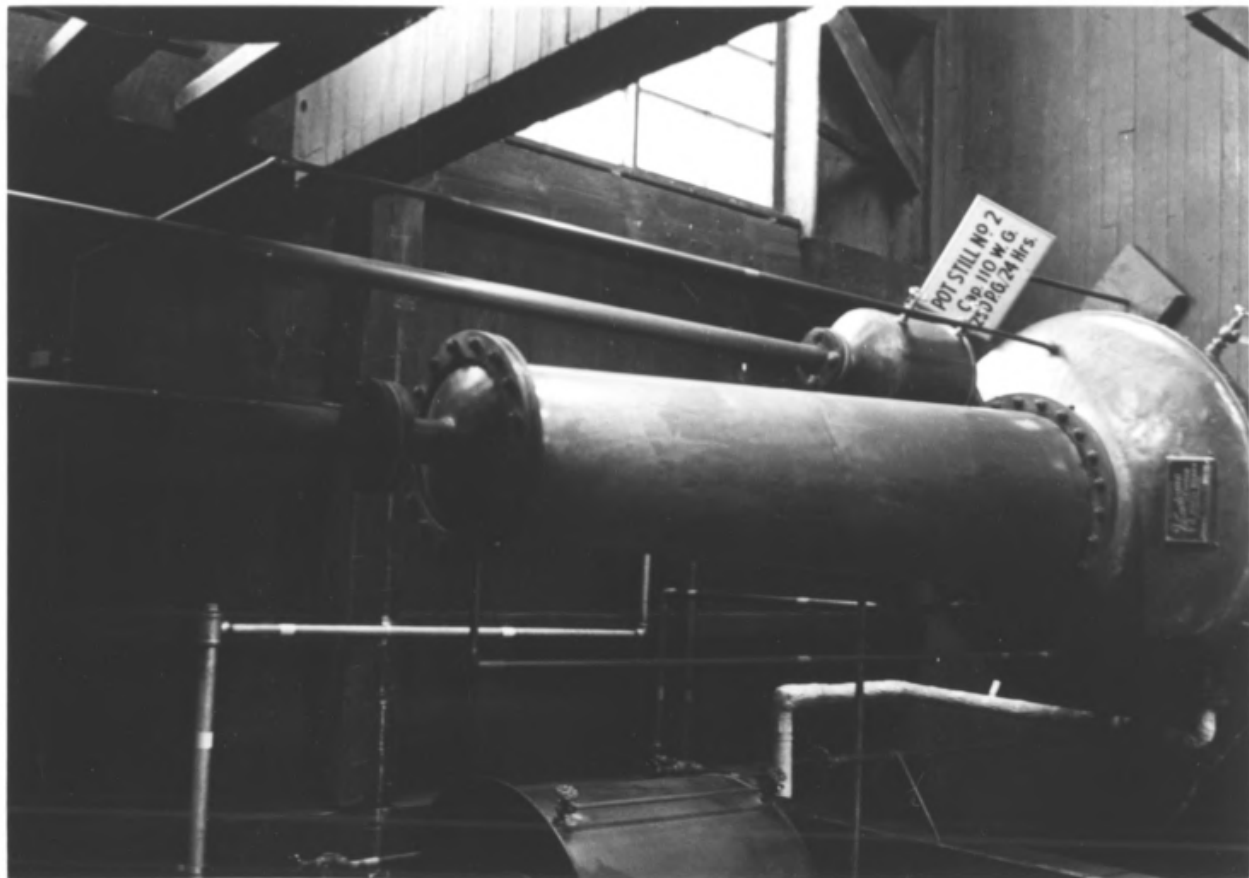
Photo No. 5

By: Ralph J. Christian, AASLH  
Negative at: Historic Sites Survey  
Date: February 1978

*Lebanon Co. PA*

View: From southeast, showing south  
side and front (east) facade of  
Still House.

JAN 16 1980



Bomberger's Distillery

7 mi. SW of Newmanstown off Pa. 501

Newmanstown, Pennsylvania

*Lebanon Co. Pa*

Photo No. 6

By: Ralph J. Christian, AASLH

Negative at: Historic Sites Survey

Date: February 1978

View: Reconstructed pot still in  
Still House.



Bomberger's Distillery

7 mi. SW of Newmanstown off Pa. 501

Newmanstown, Pennsylvania

*Lebanon Co., Pa.*

Photo No. 7

Courtesy: Michter's Distillery, Inc.

View: Whiskey barrels and re-  
constructed pot still in Still House.



CAN NO. 1  
CAP. 21.0 W.G.

DOLIA CAN NO. 2  
CAP. 21.0 W.G.

Bomberger's Distillery

7 mi. SW of Newmanstown off Pa. 501

Newmanstown, Pennsylvania

*Lebanon Co. PA*

Photo No. 8

Courtesy: Michter's Distillery, Inc.

View: 150 year old Dona Cans located  
in lower portion of distillery tower.





Bomberger's Distillery  
7 mi. SW of Newmanstown off Pa. 501  
Newmanstown, Pennsylvania

Photo No. 9

Courtesy: Michter's Distillery, Inc.

*Lebanon Co. Pa*

View: Howe Barrel Scale and storage  
area located in warehouse.



A. S. BOMBERGER & SON  
REGISTERED DISTILLERY  
W.U.G.

BOMBERGER & SON  
D. WARE

Bomberger's Distillery  
7 mi. SW of Newmanstown off Pa. 501  
Newmanstown, Pennsylvania

*Lebanon Co. Pa*  
Photo No. 10

Courtesy: Michter's Distillery, Inc.

View: From northeast, showing exterior  
of Still House and portion of  
Warehouse as it appeared around  
1900.

JAN 16 1980



Bomberger's Distillery

7 mi. SW of Newmanstown off Pa. 501  
Newmanstown, Pennsylvania

*Lebanon Co. Pa*

Photo No. 11

Courtesy: Michter's Distillery, Inc.

View: From northeast, showing  
distillery complex as it appeared  
around 1933.