



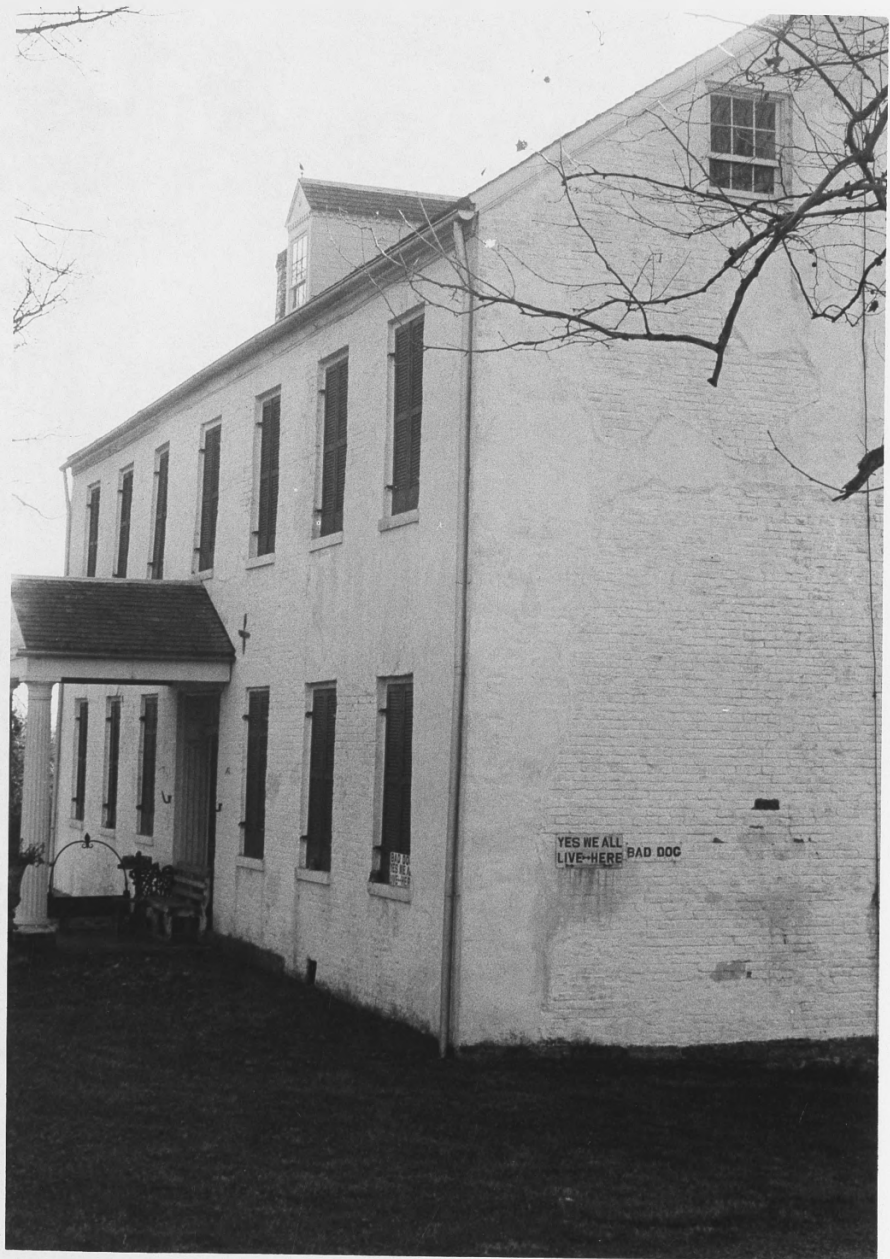
Gaines, Colonel Abner, House
Walton, Boone County, Kentucky
Ken Gibbs Fall 1976
Kentucky Heritage Commission
Frankfort, Kentucky

APR 10 1980

Photo 1 *of 7*

View of main (east) facade taken
from the southeast.

JAN 29 1980



YES WE ALL
LIVE-HERE BAD DOC

Gaines, Colonel Abner, House
Walton, Boone County, Kentucky
Ken Gibbs Fall 1976
Kentucky Heritage Commission
Frankfort, Kentucky

Photo 2 *of 7*

View of house from northeast.

JAN 29 1980

APR 10 1980



Gaines, Colonel Abner, House
Walton, Boone County, Kentucky
Ken Gibbs Fall 1976
Kentucky Heritage Commission
Frankfort, Kentucky

Photo 3 *of 7*
Detail of front door taken from
east.

JAN 29 1980

APR 10 1980



Gaines, Colonel Abner, House
Walton, Boone County, Kentucky

Ken Gibbs Fall 1976

Kentucky Heritage Commission
Frankfort, Kentucky

Photo 4 *of 7*

South side entrance in ell.

JAN 29 1980

APR 10 1980



Gaines, Colonel Abner, House
Walton, Boone County, Kentucky

Ken Gibbs Fall 1976

Kentucky Heritage Commission

Frankfort, Kentucky

APR 10 1980

Photo 547

View of ell taken from southwest.

JAN 29 1980



Gaines, Colonel Abner, House
Walton, Boone County, Kentucky
Ken Gibbs Fall 1976
Kentucky Heritage Commission
Frankfort, Kentucky

APR 10 1980

Photo 6 of 7

View showing addition to ell on
north side.

JAN 29 1980



Gaines, Colonel Abner, House
Walton, Boone County, Kentucky
Ken Gibbs Fall 1976
Kentucky Heritage Commission
Frankfort, Kentucky

Photo 7 of 7

APR 10 1980

Contemporary outbuildings to the
northwest of main house, taken
from east.

JAN 29 1980