



William P. Beckman House

c. 1868

TM #764-07-00 - 3

McClellanville Historic District

Charleston County

David Chamberlain, 1980

Berkeley-Charleston-Dorchester Council of  
Governments

William P. Beckman House (#1)

Photo #1

FEB 16 1982





McClellanville Historic District  
Charleston County  
David Chamberlain, 1980  
Berkeley-Charleston-Dorchester Council  
Of Governments  
William Beckman House (#7)  
Photo #2

FEB 16 1982





Antiques

ANTIQUES  
OLD THINGS

15

1965



TM#764-11-0-14

TM#764-11-0-14  
Bank of McClellanville  
c. 1919 Pivotal

McClellanville Historic District  
Charleston County  
David Chamberlain, 1980  
Berkeley-Charleston-Dorchester Council  
of Governments  
Bank of McClellanville (#20)  
Photo #3

FEB 16 1982



1910

TM #764-14-0-60

TM#764-14-0-60  
New Wappetaw Presbyterian  
Church  
c. 1877 Pivotal

FEB 16 1982

McClellanville Historic District  
Charleston County  
David Chamberlain, 1980  
Berkeley-Charleston-Dorchester Council  
of Governments  
New Wappetaw Presbyterian Church (#37)  
Photo #4





TM #764-15-0-19

TM#764-15-0-19

Kate Vincent Waring House  
c. 1913. Pivotal

McClellanville Historic District  
Charleston County  
David Chamberlain , 1980  
Berkeley-Charleston-Dorchester Council  
of Governments  
Kate Vincent Waring House (#38)  
Photo #5

FEB 16 1982







TM #764-15-0-14

TM#764-15-0-14  
M.F. Skipper House  
c. 1904 Pivotal

McClellanville Historic District  
Charleston County  
David Chamberlain, 1980  
Berkeley-Charleston-Dorchester Council  
of Governments  
M. F. Skipper House (#45)  
Photo #6

FEB 16 1982



WHEELMANVILLE  
WORLD WITHOUT CARES  
CHURCH SCHOOL 10-12  
SUNDAY 10:30  
REV. ELLAN A. THOMAS

TM #766-3-0-14

McClellanville Methodist  
Episcopal Church c. 1902  
Pivotal

McClellanville Historic District  
Charleston County  
David Chamberlain, 1980  
Berkeley-Charleston-Dorchester Council  
of Governments  
McClellanville Methodist Episcopal Church  
(#47)  
Photo #7

FEB 16 1982





TM #766-3-0-11

TM #766-03-0-11  
Julia R. King House  
c. 1898. Pivotal

McClellanville Historic District  
Charleston County  
David Chamberlain, 1980  
Berkeley-Charleston-Dorchester Council  
of Governments  
Julia R. King House (#52)  
Photo #8

FEB 16 198



TM #766-3-0-10

TM#766-03-0-10

James A. Lofton House

c. 1907 Pivotal

McClellanville Historic District  
Charleston County  
David Chamberlain, 1980  
Berkeley-Charleston-Dorchester Council  
of Governments  
James A. Lofton House (#53)  
Photo #9

FEB 16 1982





TM #766-3-0-3

TM #766-03-0-3  
Martha A. Taylor House  
c. 1875. Pivotal

McClellanville Historic District  
Charleston County  
David Chamberlain, 1980  
Berkeley-Charleston-Dorchester Council  
of Governments  
Martha A. Taylor House (#59)  
Photo #10

FEB 16 1982





TM #766-7-0-7

TM #766-07-0-7  
R.M. Lofton House  
c. 1934. Pivotal

McClellanville Historic District  
Charleston County  
David Chamberlain, 1980  
Berkeley-Charleston-Dorchester Council  
of Governments  
R. M. Lofton House (#65)  
Photo #11

FEB 16 1982





John Y. DuPre House  
c. 1790, pre-1869  
Pivotal

McClellanville Historic District  
Charleston County  
David Chamberlain, 1980  
Berkeley-Charleston-Dorchester Council  
of Governments  
John Y. DuPre House (#66)  
Photo #12

FEB 16 1982





TM #766-2-0-17

Hamilton Seabrook House  
c. 1891  
Pivotal

McClellanville Historic District  
Charleston County  
David Chamberlain, 1980  
Berkeley-Charleston-Dorchester Council  
of Governments  
Hamilton Seabrook House (#67)  
Photo#13

FEB 16 1982



L.P. McClellan "Summer  
Home"  
c. 1891  
Pivotal

McClellanville Historic District  
Charleston County  
David Chamberlain, 1980  
Berkeley-Charleston-Dorchester Council  
of Governments  
L. P. McClellan "Summer Home" (#71)  
Photo #14

FEB 16 1982





TM #766-2-0-10

TM#766-2-0-10  
John Y. Dupre House  
c. 1863 Pivotal

McClellanville Historic District  
Charleston County  
David Chamberlain-1980  
Berkeley-Charleston -Dorchester Council  
of Governments  
John Y. DuPre House (#76)  
Photo #15

FEB 16 1982





TM #766-2-0-5

TM#766-2-0-5

Robert E. Graham House  
c. 1915 Pivotal

McClellanville Historic District  
Charleston County  
David Chamberlain, 1980  
Berkely-Charleston-Dorchester Council  
of Governments  
Robert E. Graham House (#80)  
Photo #16

FEB 16 1982



TM #764-14-0-113

TM#764-14-0-113

Henry M. Lofton, Jr. House  
c. 1901. Pivotal

McClellanville Historic District  
Charleston County  
David Chamberlain, 1980  
Berkeley-Charleston-Dorchester Council  
of Governments  
Henry M. Lofton, Jr., House (#87)  
Photo #17

FEB 16 1982





60425 J. K. 1911

TM #764-14-0-108

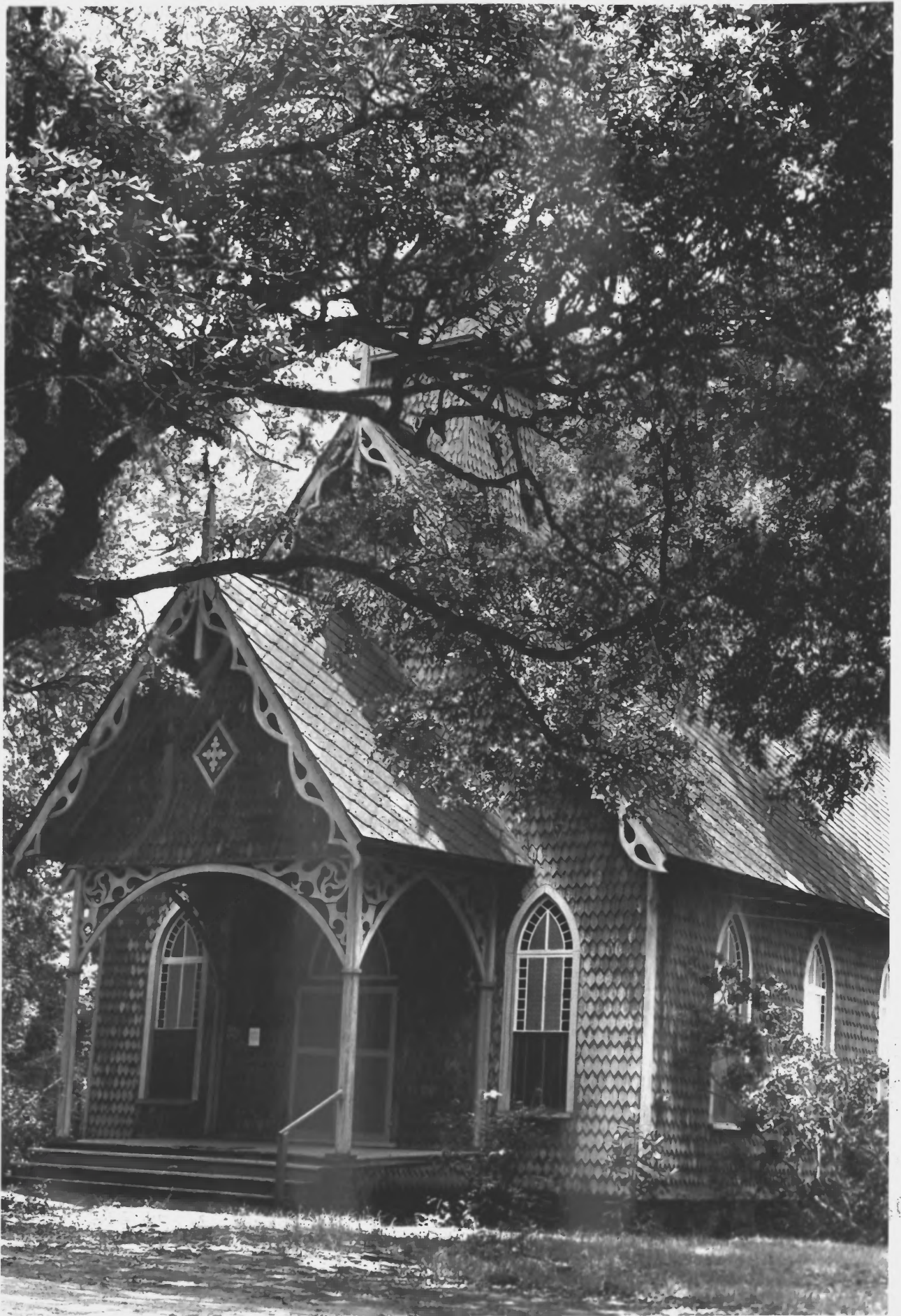
Sarah B. Doar House  
c.1900

TM #764-14-00-108

McClellanville Historic District  
Charleston County  
David Chamberlain, 1980  
Berkeley-Charleston-Dorchester Council  
of Governments  
Sarah B. Doar House (#88)  
Photo #15

FEB 16 1982







St. James Episcopal Church  
c. 1891  
Pivotal  
764-14-0-109

McClellanville Historic District  
Charleston County  
David Chamberlain, 1980  
Berkeley-Charleston-Dorchester Council  
of Governments  
St. James Episcopal Church (#91)  
Photo #19

FEB 16 1982



Louis A. Whilden House

c. 1862

TM #764-14-00-106

McClellanville Historic District

Charleston County

David Chamberlain, 1980

Berkeley-Charleston-Dorchester Council  
of Governments

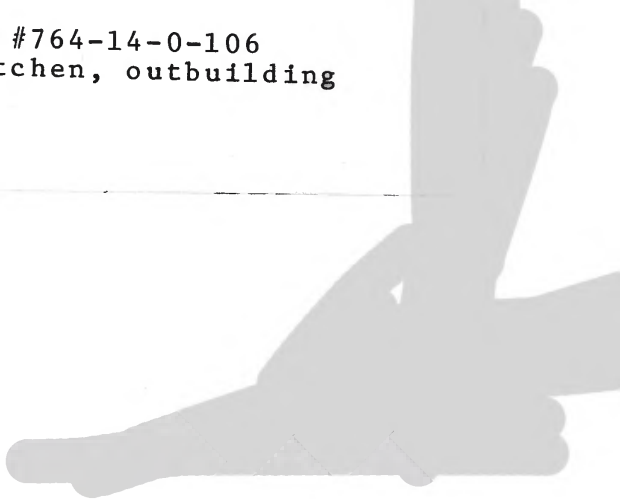
Louis A. Whilden House (#94)

Photo #20





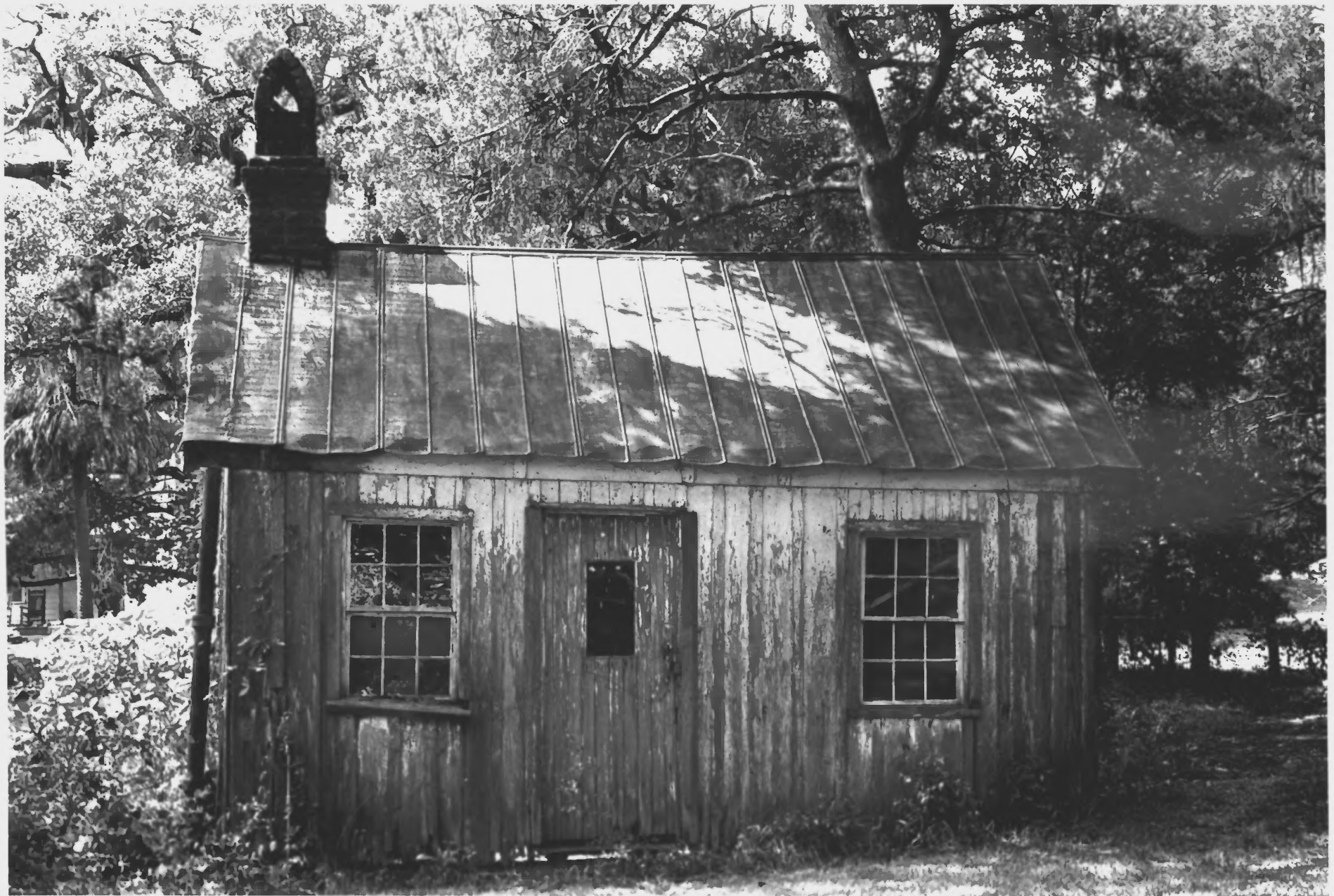
TM #764-14-0-106  
Kitchen, outbuilding



**McClellanville Historic District**  
**Charleston County**  
**David Chamberlain, 1980**  
**Berkeley-Charleston-Dorchester Council**  
**of Governments**  
**Louis A. Whilden House, Kitchen (#94)**  
Photo #21

FEB 16 1982





TM #764-14-0-106

Outbuilding - doctor's  
office

**McClellanville Historic District  
Charleston County  
David Chamberlain, 1980  
Berkeley-Charleston-Dorchester  
Council of Governments**

Louis A. Whilden House, Doctor's  
Office (#94)

Photo #22





TM #764-14-0-73

Ursula B. Morrison House  
c. 1899  
Pivotal

McClellanville Historic District  
Charleston County  
David Chamberlain, 1980  
Berkeley-Charleston-Dorchester Council  
of Governments  
Ursula B. Morrison House (#98)  
Photo #23



TM #764-14-0-72

TM #764-14-0-72  
Horace H. Leland House  
c. 1874 Pivotal

McClellanville Historic District  
Charleston County  
David Chamberlain, 1980  
Berkeley-Charleston-Dorchester Council  
of Governments  
Horace H. LeLand House (#101)  
Photo : #24

FEB 16 1982





TM# 764-14-0-70

Hibben Leland House  
c. 1887  
Pivotal

FEB 16 1982

McClellanville Historic District  
Charleston County  
David Chamberlain, 1980  
Berkeley-Charleston-Dorchester Council  
of Governments  
Hibben Leland House (#103)  
Photo#25



TM#764-14-0-69

Charlton H. Leland House  
c. 1887  
Pivotal

McClellanville Historic District  
Charleston County  
David Chamberlain, 1980  
Berkeley-Charleston-Dorchester Council  
of Governments  
Charlton H. Leland (#104)  
Photo #26

FEB 16 1982





Eugenia Isadore Graham House  
c. 1904  
TM #764-14-00-67

TM#764-14-0-67  
E.I. Graham House,  
c. 1904. Pivotal

56

McClellanville Historic District  
Charleston County  
David Chamberlain, 1980  
Berkeley-Charleston-Dorchester Council  
of Governments  
Eugenia I. Graham House (#109)  
Photo #27

FEB 16 1982







TM #764-14-0-54

New Wappentaw Presbyterian  
Manse  
c. 1880  
Pivotal

McClellanville Historic District  
Charleston County  
David Chamberlain, 1980  
Berkeley-Charleston-Dorchester Council  
of Governments  
New Wappetaw Presbyterian Manse (#125)  
Photo #28



TM#764-11-0-23

TM#764-11-0-23

J.B. Morrison, Jr. Store  
c. 1910 Contributory

McClellanville Historic District  
Charleston County  
David Chamberlain, 1980  
Berkeley-Charleston-Dorchester Council  
of Governments  
J. B. Morrison, Jr., Store (#4)  
Photo #29

FEB 16 1982







TM#764-10-0-30

TM #764-10-0-30  
Helen Beckman Smith House  
pre-1932. Contributory

40

McClellanville Historic District  
Charleston County  
David Chamberlain, 1980  
Berkeley-Charleston -Dorchester Council  
of Governments  
Helen Beckman Smith House (#8)  
Photo #30



TM# 764-11-0-21

TM #764-11-0-21

William M. Toomer House  
c. 1916. Contributory

McClellanville Historic District  
Charleston County  
David Chamberlain, 1980  
Berkeley-Charleston-Dorchester Coun  
of Governments  
William M. Toomer House (#9)  
Photo #31





TM# 764-10-0-32

TM #764-10-0-32

John M. Lofton, Jr. Store  
c. 1914 Contributory

41

McClellanville Historic District  
Charleston County  
David Chmaberlain, 1980  
Berkeley-Charleston-Dorchester Council  
of Governments  
John M. Lofton, Jr., Store (#11)  
Photo #32

FEB 16 1982



MONTANA  
PICKNEY STREET  
BOOKS LOCAL ART  
MAGAZINES CARDS  
RESTAURANT

Curtain

TM#764-11-0-16

TM#764-11-0-16  
no deed listed  
contributory

McClellanville Historic District  
Charleston County  
David Chamberlain, 1980  
Berkeley-Charleston-Dorchester Council  
of Governments  
Commercial Building (#18)  
Photo #33

FEB 16 1982





THOMAS P. MORRISON, S.C.  
Attorney and Chief Justice  
Residence, Raleigh  
657-3362 and 657-804

THOMAS P. MORRISON  
ATTORNEY AT LAW  
ROOM 601 BY APPOINTMENT  
9-12 S.W.



TM#764-11-0-15

764-11-0-15

c. 1930 Commercial building  
contributory

McClellanville Historic District  
Charleston County  
David Chamberlain, 1980  
Berkeley-Charleston-Dorchester Council  
of Governments  
Commercial Building (#19)  
Photo #34



DONT  
BLOCK  
DRIVE

REAL ESTATE

Robert Morris Real Estate

TM#764-11-0-13

TM #764-11-0-13  
King Brothers Store  
C. 1902 Contributory

McClellanville Historic District  
Charleston County  
David Chamberlain, 1980  
Berkeley-Charleston-Dorchester Council  
of Governments  
King Brothers Store (#21)  
Photo #35

FEB 16 1982





TM# 764-11-0-10

TM #764-11-0-10  
McClellanville  
Mercantile Co.  
c. 1904

**McClellanville Historic District  
Charleston County  
David Chamberlain, 1980  
Berkeley-Charleston-Dorchester  
Council of Governments**

McClellanville Mercantile Co. (#26)  
Photo #36



TM #764-15-0-36

TM #764-15-0-36

J. B. Morrison Jr. House

c. 1914.

McClellanville Historic District  
Charleston County  
Berkeley-Charleston-Dorchester  
Council of Governments  
David Chamberlain, 1980  
J. B. Morrison, Jr., House (#33)  
Photo #37





TM#764-14-0-26

McClellanville Public School

1922           Contributory

McClellanville Historic District  
Charleston County  
David Chamberlain, 1980  
Berkeley-Charleston-Dorchester Council  
of Governments  
McClellanville Public School (#34)  
Photo #38

FEB 16 1982



TM #764-15-0-34

Ester Commander House

c. 1927

TM#764-15-0-34

McClellanville Historic District

Charleston County

David Chamberlain, 1980

Berkeley-Charleston-Borchester Council  
of Governments

Ester Commander House (#36)

Photo #39





TM #764-15-0-17

TM #764-15-0-17  
George W. Shokes House  
c. 1904.

McClellanville Historic District  
Charleston County  
David Chamberlain, 1980  
Berkeley-Charleston-Dorchester  
Council of Governments  
George W. Shokes House (#40)  
Photo #40



McClellanville Historic District  
Charleston County  
David Chamberlain, 1980  
Berkeley-Charleston-Dorchester  
Council of Governments

Residence (#49)

Photo #41

FEB 16 1982







TM #766-3-0-22

TM#766-3-0-22

J. Osgood McClellan House

c. 1914 Contributory

McClellanville Historic District  
Charleston County  
David Chamberlain, 1980  
Berkeley-Charleston-Dorchester Council  
of Governments  
J. Osgood McClellan House (#55)  
Photo #42

FEB 16 1982



1000 1000 1000

TM #766-3-0-7

TM#766-3-0-7

Sarah J. Stanland Graham  
House, c. 1900.

McClellanville Historic District  
Charleston County

David Chamberlain, 1980

Berkeley-Charleston-Dorchester

Council of Governments

Sarah J. Stanland Graham House (#56)

Photo #43





TM #766-3-0-4

TM #766-3-0-4

Eliza A. Murray House  
post - 1914

McClellanville Historic District  
Charleston County  
David Chamberlain, 1980  
Berkeley-Charleston-Dorchester  
Council of Governments  
Eliza A. Murray House (#58)  
Photo #44



TM #766-7-0-2

TM #766-07-2  
John H. Graham House  
c. 1914.

**McClellanville Historic District  
Charleston County  
David Chamberlain, 1980  
Berkeley-Charleston-Dorchester  
Council of Governments**

John H. Graham House (#62)

Photo #45







TM #766-2-0-18

TM #766-02-0-18

Lillian F. Lucas House

c. 1925.

**McClellanville Historic District  
Charleston County**

**David Chamberlain, 1980**

**Berkeley-Charleston-Dorchester  
Council of Governments**

Lillian F. Lucas House (#68)

Photo #46



TM #766-2-0-15

Gabriel Manigault House  
c. 1861

McClellanville Historic District  
Charleston County  
David Chamberlain, 1980  
Berkeley-Charleston-Dorchester  
Council of Governments  
Gabriel Manigault House (#72)  
Photo #47

FEB 16 198







TM #764=14-0-111

764-14-0-111

Martha G. Doar House c. 1928  
contributory

**McClellanville Historic District**  
**Charleston County**  
**David Chamberlain, 1980**  
**Berkeley-Charleston-Dorchester**  
**Council of Governments**  
Martha G. Doar House (#89)  
Photo #48



TM #764-14-0-107

TM#764-14-0-107

Arthur O. Atkinson House  
c. 1918

**McClellanville Historic District  
Charleston County  
David Chamberlain, 1980  
Berkeley-Charleston-Dorchester  
Council of Governments**

Arthur O. Atkinson House (#92)  
Photo #49

FEB 16 1982





TM #764-14-0-105

TM #764-14-0-105.  
R. B. Leland House  
c. 1916

**McClellanville Historic District  
Charleston County  
David Chamberlain, 1980  
Berkeley-Charleston-Dorchester  
Council of Governments  
R. B. Leland House (#95)  
Photo #50**



TM #764-14-0-74

TM #764-14-0-74

A. Bonneau McGillivary  
House

"New Cottage"

pre-1914

**McClellanville Historic District  
Charleston County  
David Chamberlain, 1980  
Berkeley-Charleston-Dorchester  
Council of Governments**

A. Bonneau McGillivary House  
"New Cottage" (#99)  
Photo #51

FEB 16 1982





TM# 764-14-0-66

Robert A. Morrison House  
c. 1871

McClellanville Historic District  
Charleston County  
David Chamberlain, 1980  
Berkeley-Charleston-Dorchester  
Council of Governments

Robert A. Morrison House (#111)  
Photo #52

FEB 16 1980



TM#764-14-0-65

TM #764-14-0-65  
Robert H. Morrison House  
c. 1908

McClellanville Historic District  
Charleston County  
David Chamberlain, 1980  
Berkeley-Charleston-Dorchester Council of  
Governments  
Robert H. Morrison House (#114)  
Photo #53

FEB 16 1982





TM# 764-14-0-64

764-14-0-64

contributory

McClellanville Historic District  
Charleston County  
David Chamberlain, 1980  
Berkeley-Charleston-Dorchester  
Council of Governments  
Residence (#115)  
Photo #54

FEB 16 1982



TM#764-14-0-64

764-14-0-64

c. 1937 Contributory

McClellanville Historic District  
Charleston County  
David Chamberlain, 1980  
Berkeley-Charleston-Dorchester  
Council of Governments  
Residence (#116)  
Photo #55

FEB 16 1982







TM #764-14-0-63

TM#764-14-0-63  
C.M. Loftan House  
c. 1911

McClellanville Historic District  
Charleston County  
David Chamberlain, 1980  
Berkeley-Charleston-Dorchester  
Council of Governments  
C. M. Loftan House (#117)  
Photo #56

FEB 16 1982



TM #764-14-0-53

764-14-0-53

c. 1938. Contributory

**McClellanville Historic District**  
**Charleston County**  
**David Chamberlain, 1980**  
**Berkeley-Charleston-Dorchester**  
**Council of Governments**  
Residence (#119)  
Photo #57







TM #764-14-0-58

764-14-0-58

post 1922 Contributory

**McClellanville Historic District**  
**Charleston County**  
**David Chamberlain, 1980**  
**Berkeley-Charleston-Dorchester**  
**Council of Governments**  
Residence of (#121a)  
Photo #58



TM #764-14-0-58

764-14-0-58  
outbuilding  
contributory

**McClellanville Historic District**  
**Charleston County**  
**David Chamberlain, 1980**  
**Berkeley-Charleston-Dorchester**  
**Council of Governments**  
Outbuilding / Residence (#121b)  
Photo #59







Ursula A. MacIntosh House  
c. 1889

**McClellanville Historic District  
Charleston County**

**David Chamberlain, 1980**

**Berkeley-Charleston-Dorchester**

**Council of Governments**

Ursula A. MacIntosh House (#122)

Photo #60

FEB 16 1982



David Mackintosh House  
c. 1913  
TM #764-14-00-56

McClellanville Historic District  
Charleston County  
David Chamberlain, 1980  
Berkeley-Charleston-Dorchester Council  
of Governments  
David M. Mackintosh House (#123)  
Photo #61

FEB 16 1982







TM#764-14-0-55

TM #764-14-055

R. H. Peacock House

c. 1913

**McClellanville Historic District  
Charleston County  
David Chamberlain, 1980  
Berkeley-Charleston-Dorchester  
Council of Governments**

R. H. Peacock House (#124)  
Photo #62

FEB 16 1982



TM #764-14-0-39

#127

TM #764-14-0-39

Mary Morrison Brailsford  
House  
c. 1917

McClellanville Historic District  
Charleston County  
David Chamberlain, 1980  
Berkeley-Charleston-Dorchester  
Council of Governments  
Mary Morrison Brailsford House (#127)  
Photo #63

FEB 16 1982





Mary A. Mills House

c. 1890

TM #764-00-88

McClellanville Historic District  
Charleston County  
David Chamberlain, 1980  
Berkeley-Charleston-Dorchester  
Council of Governments  
Mary A. Mills House (#143)  
Photo #54

FEB 16 1982



J.O. Murray House  
c. 1899  
TM #764-00-87

McClellanville Historic District  
Charleston County  
David Chamberlain, 1980  
Berkeley-Charleston-Dorchester  
Council of Governments  
J. O. Murray House (#144)  
Photo #65

FEB 16 1982





TM# 764-10-0-28

Non-contributory

**McClellanville Historic District  
Charleston County  
David Chamberlain, 1980  
Berkeley-Charleston-Dorchester  
Council of Governments  
Commercial Building (#5)  
Photo #66**

FEB 16 1982



TM# 764-11-0-22

Non-contributory

McClellanville Historic District  
Charleston County  
David Chamberlain, 1980  
Berkeley-Charleston-Dorchester Council  
of Governments  
Residence (#6)  
Photo #67

FEB 16 1982







TM#764-10-0-33

Non-contributory

McClellanville Historic District  
Charleston County  
David Chamberlain, 1980  
Berkeley-Charleston-Dorchester Council  
of Governments  
Commercial Building (#13)  
Photo #68

FEB 16 1982



TM#764-11-0-18

764-11-0-18  
c. 1945

McClellanville Historic District  
Charleston County  
David Chamberlain, 1980  
Berkeley-Charleston-Dorchester Council  
of Governments  
Residence (#14)  
Photo #69

FEB 16 1982





Pharmacy  
Apothecary

MARCOS  
PHARMAC

PRESCRIPTION

S. Sandra B.  
D. M.D.  
General Practice



TM# 764-11-0-17

Non-contributory

---

McClellanville Historic District  
Charleston County  
David Chamberlain, 1980  
Berkeley-Charleston-Dorchester Council  
of Governments  
Marcos Pharmacy (#17)  
Photo #70

FEB 16 1982



TM# 764-11-0-11

Non-contributory

**McClellanville Historic District**  
**Charleston County**  
**David Chamberlain, 1980**  
**Berkeley-Charleston-Dorchester**  
**Council of Governments**  
H. W. Graham & Company (#24)  
Photo #71

FEB 16 1982







TM# 764-10-0-43

Non-contributory

McClellanville Historic District  
Charleston County  
David Chamberlain, 1980  
Berkeley-Charleston-Dorchester  
Council of Governments  
Residence (#25)  
Photo #72

FEB 16 1982

  
**INDEPENDENT**  
**HOURS**  
8:00am - 5:00pm  
10:00am - 5:00pm  
Closed

  
*McClellanville*  
**TELEPHONE COMPANY**  
**INC.**

Phone  


TM #764-14-0-10  
Non-contributory

McClellanville Historic District  
Charleston County  
David Chamberlain, 1980  
Berkeley-Charleston-Dorchester Council  
of Governments  
McClellanville Telephone Company, Inc. (#26)  
Photo :#73





McClellanville Historic District  
Charleston County  
David Chamberlain, 1980  
Berkeley-Charleston-Dorchester Council  
of Governments  
Storage Shed (#28)  
Photo #74

FEB 16 1982







TM #764-15-0-37

Non-Contributory

McClellanville Historic District  
Charleston County  
David Chamberlain, 1980  
Berkeley-Charleston-Dorchester  
Council of Governments  
Residence (#30)  
Photo #75

FEB 16 1982



TM #764-15-0-35

Non-Contributory

McClellanville Historic District  
Charleston County  
David Chamberlain, 1980  
Berkeley-Charleston-Dorchester  
Council of Governments  
Residence (#35)  
Photo #76

FEB 16 1982





TM #764-15-0-18

Non-Contributory

McClellanville Historic District  
Charleston County  
David Chamberlain, 1980  
Berkeley-Charleston-Dorchester  
Council of Governments  
Post Office (#39)  
Photo #77

FEB 16 1982





TM #764-15-0-15

Non-Contributory

McClellanville Historic District  
Charleston County  
David Chamberlain, 1980  
Berkeley-Charleston-Dorchester  
Council of Governments  
Residence (#43)  
Photo #78



TM #764-15-0-14

Non-Contributory  
Outbuilding

McClellanville Historic District  
Charleston County  
David Chamberlain, 1980  
Berkeley-Charleston-Dorchester  
Council of Governments  
Residence (#45)  
Photo #79

FEB 16 1982





TM #766-3-0-13

Non-Contributory

McClellanville Historic District  
Charleston County  
David Chamberlain, 1980  
Berkeley-Charleston-Dorchester  
Council of Governments  
Mobile Home (#48)  
Photo #80

FEB 16 1982







TM #766-3-0-12

Non-Contributory

McClellanville Historic District  
Charleston County  
David Chamberlain, 1980  
Berkeley-Charleston-Dorchester  
Council of Governments  
Residence (#50)  
Photo #81

FEB 16 1982



McClellanville Historic District  
Charleston County  
David Chamberlain, 1980  
Berkeley-Charleston-Dorchester Council  
of Governments  
Residence (#51)  
Photo #82

FEB 16 1982





UNIVERSITY MICROFILMS  
SERIALS ACQUISITION  
300 N ZEEB RD  
ANN ARBOR MI 48106

TM #766-3-0-9

Non-Contributory

**McClellanville Historic District  
Charleston County**

**David Chamberlain, 1980**

**Berkeley-Charleston-Dorchester  
Council of Governments**

Residence (#54)

Photo #83







TM #766-3-0-6

Non-Contributory

**McClellanville Historic District  
Charleston County  
David Chamberlain, 1980  
Berkeley-Charleston-Dorchester  
Council of Governments  
Residence (#57)  
Photo #84**

FEB 16 1982



TM #766-7-0-1

Non Contributory

McClellanville Historic District  
Charleston County  
David Chamberlain, 1980  
Berkeley-Charleston-Dorchester Council  
of Governments  
Residence (#61)  
Photo #85

FEB 16 1982





TM #766-7-0-13

Non Contributory

McClellanville Historic District  
Charleston County  
David Chamberlain, 1980  
Berkeley-Charleston-Dorchester Council  
of Governments  
Residence (#64)  
Photo #86

FEB 16 1982







TM #766-2-0-13

Non-Contributory

McClellanville Historic District  
Charleston County  
David Chamberlain, 1980  
Berkeley-Charleston-Dorchester  
Council of Governments  
Residence (#74)  
Photo #87

FEB 16 1982



TM #766-2-0-11

766-02-0-11

c, 1943

McClellanville Historic District  
Charleston County  
David Chamberlain, 1980  
Berkeley-Charleston-Dorchester  
Council of Governments  
Residence (#75a)  
Photo #88

FEB 16 1982





TM #766-2-0-11

Outbuilding

766-2-0-11  
outbuilding

McClellanville Historic District  
Charleston County  
David Chamberlain, 1980  
Berkeley-Charleston-Dorchester  
Council of Governments  
Outbuilding (#75b)  
Photo #89

FEB 16 1982







TM #766-2-0-8

766-2-0-8

~~Non~~-contributory

McClellanville Historic District  
Charleston County  
David Chamberlain, 1980  
Berkeley-Charleston-Dorchester Council  
of Governments  
Residence (#77)  
Photo #90

FEB 16 1982



TM #766-2-0-7

Non-Contributory

McClellanville Historic District  
Charleston County  
David Chamberlain, 1980  
Berkeley-Charleston-Dorchester Council  
of Governments  
Residence (#78) ·  
Photo #91

FEB 16 1982





TM #766-2-0-3

Non-Contributory

**McClellanville Historic District  
Charleston County  
David Chamberlain, 1980  
Berkeley-Charleston-Dorchester Council  
of Governments  
Residence (#82)  
Photo #92**

FEB 16 1982





TM #766-2-0-1

Non-Contributory

McClellanville Historic District  
Charleston County  
David Chamberlain, 1980  
Berkeley-Charleston-Dorchester Council  
of Governments  
Commercial Building (#85)  
Photo #93

FEB 16 1982



TM #764-14-0-112

764-14-0-112

c. 1947

McClellanville Historic District  
Charleston County  
David Chamberlain, 1980  
Berkeley-Charleston-Dorchester Council  
of Governments  
Residence (#86)  
Photo : #94

FEB 16 1982





TM #764-14-0-110

764-14-0-110

c. 1948

**McClellanville Historic District**  
**Charleston County**  
**David Chamberlain, 1980**  
**Berkeley-Charleston-Dorchester Council**  
**of Governments**  
**Residence (#90)**  
**Photo # 95**

FEB 16 1982







TM #764-14-0-107  
Non-contributory

**McClellanville Historic District  
Charleston County  
David Chamberlain, 1980  
Berkeley-Charleston-Dorchester Council  
of Governments**

**Residence (#93)**

**Photo #96**

FEB 16 1982



TM#764-14-0-51

Non-contributory

**McClellanville Historic District**  
**Charleston County**  
**David Chamberlain, 1980**  
**Berkeley-Charleston-Dorchester Council**  
**of Governments**  
**Residence (#112)**  
**Photo #97**

FEB 16 1987





TM #764-14-0-50  
Non-contributory

**McClellanville Historic District**  
**Charleston County**  
**David Chamberlain, 1980**  
**Berkeley-Charleston-Dorchester Council**  
**of Governments**  
**Residence (#100)**  
**Photo #98**

FEB 16 1982







TM #764-14-0-51  
Non-contributory

**McClellanville Historic District  
Charleston County  
David Chamberlain, 1980  
Berkeley-Charleston-Dorchester Council  
of Governments  
Residence (#113)  
Photo #99**



TM #764-14-0-52  
Non-contributory

McClellanville Historic District  
Charleston County  
David Chamberlain, 1980  
Berkeley-Charleston-Dorchester Council  
of Governments  
Residence (#118)  
Photo #100

FEB 16 1982





TM #764-14-0-59  
Non-contributory

**McClellanville Historic District  
Charleston County  
David Chamberlain, 1980  
Berkeley-Charleston-Dorchester  
Council of Governments**

Club Lodge (#120)  
Photo #101

FEB 16 1982







TM# 764-14-0-37

764-14-0-37

Now-contributory

McClellanville Historic District  
Charleston County  
David Chamberlain, 1980  
Berkeley-Charleston-Dorchester Council  
of Governments  
Residence (#131)  
Photo # 102

FEB 16 1982



TM #764-14-0-43  
Non-contributory

McClellanville Historic District  
Charleston County  
David Chamberlain, 1980  
Berkeley-Charleston-Dorchester Council  
of Governments  
Residence (#132)  
Photo #103

FEB 16 1982





TM#764-14-0-49

764-14-0-49

Non-contributory

McClellanville Historic District  
Charleston County  
David Chamberlain, 1980  
Berkeley-Charleston-Dorchester Council  
of Governments  
Residence (#140)  
Photo #104

FEB 16 1982





General View looking  
Northwest up Jeremy Creek

McClellanville Historic District  
Charleston County  
David Chamberlain, 1980  
Berkeley-Charleston-Dorchester Council  
of Governments  
View of Jeremy Creek  
Photo #105

FEB 7 6 1982



1920 8 11

General View, Oak and  
Pinckney Streets

McClellanville Historic District  
Charleston County  
David Chamberlain, 1980  
Berkeley-Charleston-Dorchester Council  
of Governments  
Streetscape - South Pinckney Street  
Photo #106

FEB 16 1982