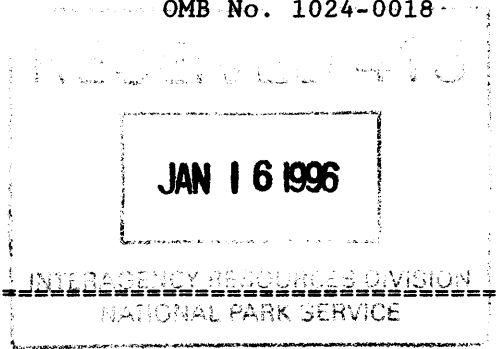


United States Department of the Interior
National Park Service

NATIONAL REGISTER OF HISTORIC PLACES
REGISTRATION FORM



1. Name of Property

historic name Butler, Charles, House

other names/site number Butler-Harris-Rainwater House

2. Location

street & number Corner of First Street & Tenth Avenue not for publication N/A
city or town Childersburg vicinity N/A
state Alabama code AL county Talladega code 121 zip code 35044

3. State/Federal Agency Certification

As the designated authority under the National Historic Preservation Act of 1966, as amended, I hereby certify that this X nomination ___ request for determination of eligibility meets the documentation standards for registering properties in the National Register of Historic Places and meets the procedural and professional requirements set forth in 36 CFR Part 60. In my opinion, the property X meets ___ does not meet the National Register Criteria. I recommend that this property be considered significant ___ nationally ___ statewide X locally. (See continuation sheet for additional comments.)

[Signature] 12/18/95
Signature of certifying official Date

Alabama Historical Commission (State Historic Preservation Office)
State or Federal agency and bureau

In my opinion, the property ___ meets ___ does not meet the National Register criteria. (___ See continuation sheet for additional comments.)

Signature of commenting or other official Date

State or Federal agency and bureau

4. National Park Service Certification

I, hereby certify that this property is:
 entered in the National Register
___ See continuation sheet.
___ determined eligible for the National Register
___ See continuation sheet.
___ determined not eligible for the National Register
___ removed from the National Register
___ other (explain): _____

Edson H. Beall

Entered in the
National Register

[Signature]
Signature of Keeper

2/16/96
Date of Action

7. Description

Architectural Classification (Enter categories from instructions)

Queen Anne

Materials (Enter categories from instructions)

foundation Brick
roof Asphalt
walls Wood
other Wood

Narrative Description (Describe the historic and current condition on continuation sheet/s.)

8. Statement of Significance

Applicable National Register Criteria (Mark "x" in one or more boxes for the criteria qualifying the property for National Register listing)

- A Property is associated with events that have made a significant contribution to the broad patterns of our history.
- B Property is associated with the lives of persons significant in our past.
- C Property embodies the distinctive characteristics of a type, period, or method of construction or represents the work of a master, or possesses high artistic values, or represents a significant and distinguishable entity whose components lack individual distinction.
- D Property has yielded, or is likely to yield information important in prehistory or history.

Criteria Considerations (Mark "X" in all the boxes that apply.)

- A owned by a religious institution or used for religious purposes.
- B removed from its original location.
- C a birthplace or a grave.
- D a cemetery.
- E a reconstructed building, object, or structure.
- F a commemorative property.
- G less than 50 years of age or achieved significance within the past 50 years.

Areas of Significance (Enter categories from instructions)

Architecture

Period of Significance c. 1890

Significant Dates c. 1890

Significant Person (Complete if Criterion B is marked above) N/A

Cultural Affiliation N/A

Architect/Builder Unknown

Narrative Statement of Significance (Explain significance on continuation sheet/s.)

=====

9. Major Bibliographical References

=====

(Cite the books, articles, and other sources used in preparing this form on one or more continuation sheets.)

- Previous documentation on file (NPS) N/A
- preliminary determination of individual listing (36 CFR 67) has been requested.
- previously listed in the National Register
- previously determined eligible by the National Register
- designated a National Historic Landmark
- recorded by Historic American Buildings Survey # _____
- recorded by Historic American Engineering Record # _____

Primary Location of Additional Data

- State Historic Preservation Office
- Other State agency
- Federal agency
- Local government
- University
- Other

Name of repository: Talladega County Courthouse & Rainwater Memorial Library

=====

10. Geographical Data

=====

Acreeage of Property less than 1 acre

UTM References (Place additional UTM references on a continuation sheet)

	Zone	Easting	Northing	Zone	Easting	Northing
1	<u>16</u>	<u>559860</u>	<u>3682000</u>	3	_____	_____
2	_____	_____	_____	4	_____	_____

_____ See continuation sheet.

Verbal Boundary Description (Describe the boundaries of the property on a continuation sheet.)

Boundary Justification (Explain why the boundaries were selected on a continuation sheet.)

=====

11. Form Prepared By

=====

name/title Mary Farr S. Hamby (First Vice President)

organization Historic Preservation Commission (Childersburg) date Sept. 6, 1994

street & number 75 Fairview Drive telephone (205) 378-3443

city or town Childersburg state AL zip code 35044

USDI/NPS Registration Form

Property Name Butler, Charles, House

County and State Talladega, Alabama

Page #5

=====

Additional Documentation

=====

Submit the following items with the completed form:

Continuation Sheets

Maps

A USGS map (7.5 or 15 minute series) indicating the property's location.

A sketch map for historic districts and properties having large acreage or numerous resources.

Photographs

Representative black and white photographs of the property.

Additional items (Check with the SHPO or FPO for any additional items)

=====

Property Owner

=====

(Complete this item at the request of the SHPO or FPO.)

name City of Childersburg

street & number 118 6th Avenue, SW telephone (205) 378-5521

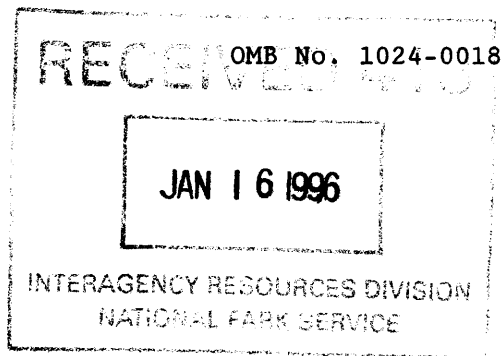
city or town Childersburg state AL zip code 35044

United States Department of the Interior
National Park Service

NATIONAL REGISTER OF HISTORIC PLACES
CONTINUATION SHEET

Section 7 Page 6

Charles Butler House
Talladega County, Alabama



=====

PHYSICAL DESCRIPTION

The Charles Butler House is a prominent landmark in the community of Childersburg. It is situated on a small hill at the corner of Tenth Avenue and First Street. The Charles Butler House faces east and overlooks historic downtown Childersburg.

The house is a two-story Eastlake Victorian structure with many gingerbread festooned gables. It has three inside-wall chimneys. It has a clapboard exterior with 45-degree angle tongue and groove trim on the front entrance and on the prominent bay windows on the north side, as well as under the eaves of three impressive gables. There is a wraparound porch, two tiered on the front of the house. All eaves and banisters are decorated with geometrical gingerbread of the Eastlake style, probably mail order. It is a large 12-room house (51' X 38' on each floor).

The windows are of the large wooden sash type. The bay windows each contain jib windows. About 1920 there were extensions added to both sides of the house. On the south side, the original stairway was moved further to the south, so that the entry hall was made larger. The room behind the entry hall ("Sitting Room") was also extended, causing the porch to be moved farther out also. This extension necessitated the addition of a dormer to accommodate the stairway upstairs (see photograph number 5). On the north side of the house, the kitchen was enlarged by an extension.

The exterior of the house has been white for the entire memory of all living citizens of Childersburg. But an old photo seems to document that the original exterior paint and trim were polychromatic. Also scrapings seem to show color under the white. The house rests on brick piers and has been underpinned.

The house was probably built c. 1890. It features decorative fireplace mantels in every room. The house is wallpapered and has many picture and chair rails as well as wainscoting in many rooms. The parlor has dark stained wooden paneled wainscoting and pocket doors to the living room with very ornate woodwork. The parlor bay windows reach to the floor. There are two small closets, a double closet, and a small pantry downstairs. There are two small closets upstairs. The closets and pantry are probably not original to the house and were most likely added in the 1920s when the extensions were added. Also, probably in the 1920s as well, a bathroom was added near the "sitting room," since the "sitting room" was sometimes used as a bedroom.

The entry hall has an interesting banistered stairway with lovely turned work. The front door is embellished with many designs. A crown rests at the top of the framed glass. A pineapple symbolizing welcome, adorns the panel on the lower half. Hardware for an old doorbell is in the middle between the glass and lower panel.

Interior hardware, such as light switches and door knobs, are of the original metal. All fireplaces are on the interior walls of the house. The parlor and entry hall share an interior chimney, as do the dining room and sitting rooms. Upstairs bedrooms number 2 and number 3 share an interior chimney with the dining and sitting rooms. The dayroom and bedroom

United States Department of the Interior
National Park Service

NATIONAL REGISTER OF HISTORIC PLACES
CONTINUATION SHEET

Section 7 Page 7 Charles Butler House
 Talladega County, Alabama

=====

number 4 above it share an interior chimney. Bedroom number 1, upstairs, shares the chimney with the parlor and entry hall below.

The mantels of the dining and sitting rooms are embellished with applied molded decoration, circles, knobs, and arches. The mantels of the upstairs bedrooms number 1 and number 2 are trimmed with square and rectangular molded medallions. The most unusual mantel is in the entry hall. It has a ribbon design applied above the fireplace. There is an over-mantel with a mirror, framed by more decorative molded appliques.

The upstairs bedrooms are bright with large windows. Bedroom number 3 has a large bay window as does the dining room just below it. Since the house sits on a hill, all the upstairs rooms look out over the town of Childersburg.

The landscaping has been unattended for many years. Some large oak trees remain from the past. Several "leggy" nandina bushes grow around the porch. The brick has been virtually covered with dirt. But plans are to restore the yard/garden and walk to what is thought to have been its original state. There are no pictures remaining to show the early landscape, but a horticulturist with a background in historical gardens and plants (John Phillip Roberts) is planning the proposed yard restoration.

There are no present outbuildings, but there probably once were. Tax records show that there were livestock, carts, and wagons. Buildings for these were needed and were within the means of the family.

Although no formal archaeological survey has been made of this property, the potential for subsurface remains is high. Properties of this type were cited within a constellation of outbuildings. Buried portions may contain significant information that may be useful in interpreting the entire property.

United States Department of the Interior
National Park Service

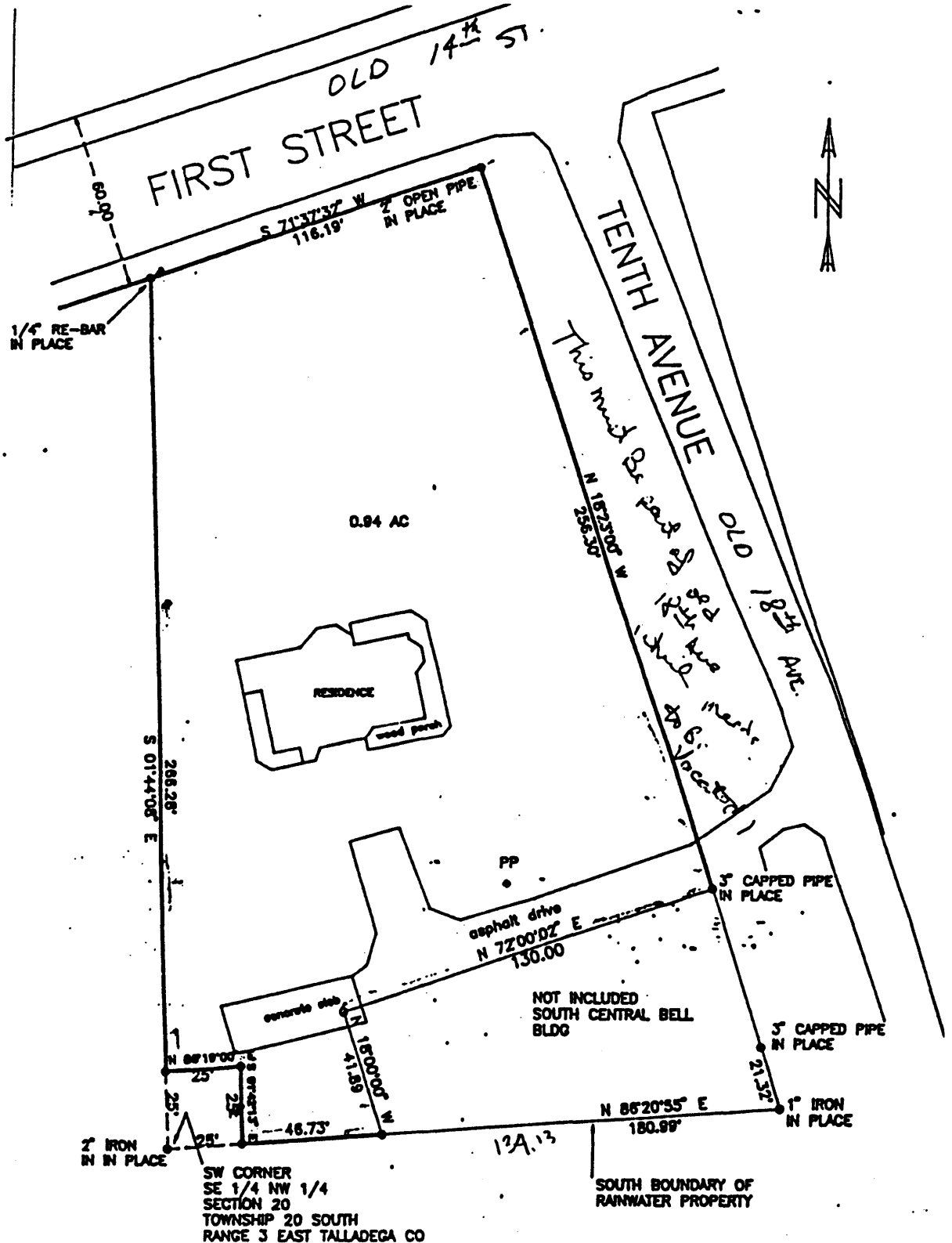
NATIONAL REGISTER OF HISTORIC PLACES
CONTINUATION SHEET

Section 7

Page 8

Charles Butler House
Talladega County, Alabama

SKETCH OF HOUSE AND LOT



United States Department of the Interior
National Park Service

NATIONAL REGISTER OF HISTORIC PLACES
CONTINUATION SHEET

Section 8 Page 9 Charles Butler House
 Talladega County, Alabama

=====

STATEMENT OF SIGNIFICANCE

The Charles Butler House, constructed c. 1890(1), is a locally significant example of the Queen Anne style in Childersburg, Talladega County, Alabama. It retains a high degree of architectural integrity and also historic integrity in terms of location, design, setting, materials, workmanship, feeling, and association. It is eligible for the National Register of Historic Places under Criterion C with the area of significance being Architecture.

The Queen Anne style of architecture was commonly applied to residential design around the turn of the century and held a special significance in the South. Rarely seen in rural areas, the Queen Anne style was popular among the professional class in the cities and the towns. The style thus symbolized the transfer of power and influence from the Southern planters to the growing, urban middle class.

HISTORICAL SUMMARY

The people who have lived in this house over the years were important in commerce, government, and education. The influence of the Butlers, builders of the house, on the growth and commerce of Childersburg is of great significance. They owned and operated a livery stable and a mercantile business, Butler and Son. They were the town's most affluent citizens. The house was given to Charles Butler as a wedding gift from his parents, George and Marion Butler, in 1894(2).

In February 1923, Mrs. J.A. Harris (Sophie) bought the house from the Butlers(3). The Harris were also prominent citizens of Childersburg. Dr. Harris had been a physician of importance to the health of the town(4). Mrs. Harris was postmistress from 1914-1924(5).

The third family to own the house, Earle and Virginia Rainwater, also meant a great deal to the town of Childersburg(6). Earle Rainwater was elected mayor in 1948 and the present library bears his name(7). They acquired the house in 1923.

Even though it is currently undergoing restoration and is vacant, the Charles Butler House is of ongoing importance to Childersburg. It has an imposing location, atop a hill overlooking the town of Childersburg and the historic railroad trestle (the railroad being an important part of the economic history of Childersburg). The house can be seen from U.S. Highway 280. Its north side faces First Street, the main street into the downtown area of Childersburg. The DeSoto mural, another landmark of Childersburg, showing the meeting of DeSoto and the Indians in the Childersburg area in 1540, is painted on the large retaining wall of the hill on which the house sits (First Street side). The House is the first introduction that a stranger has to the town of Childersburg. It tells the story of Childersburg as it has moved through time.

The house is an outward and visible sign of the people who have moved through it. It is a connection with the men and women of Childersburg who have gone before us. People who have lived and struggled and celebrated there, who have looked through its windows to the town below, are memorialized within it.

United States Department of the Interior
National Park Service

NATIONAL REGISTER OF HISTORIC PLACES
CONTINUATION SHEET

Section 8 Page 10 Charles Butler House
 Talladega County, Alabama

=====

It is a landmark that tells us where we are. It is evidence of what we are like. It has to do with the dignity of our ancestors, the dignity of a time in our history.

1. Gamble, Robert, interview, Oct. 1994.
2. Bush, Annie Louise Ryder: Memoirs of Childersburg, pp.7, 14 and deed from Talladega County Courthouse.
3. Deed from Talladega County Courthouse.
4. Bush, op. cit. page 9.
5. Bush, Ibid. page 8 and "The Childersburg Star", Oct. 2, 1975, page 4 "The Rainwater House Featured."
6. Deed from Talladega County Courthouse.
7. "The Childersburg Star", op.cit. page 4.

United States Department of the Interior
National Park Service

NATIONAL REGISTER OF HISTORIC PLACES
CONTINUATION SHEET

Section 9 & 10 Page 11 Charles Butler House
 Talladega County, Alabama

=====

BIBLIOGRAPHY

Bush, Annie Louise Ryder: Memoirs of Childersburg.

Bylaws of the Childersburg Historic Preservation Commission of Childersburg, Alabama.

"The Childersburg Star", Oct., 2, 1975.

INTERVIEWS

Atkinson, Billy, Talladega County Tax Assessor and President of the Talladega County Historical Commission.

Biles, Helen, a native of Childersburg, born in 1906.

Gamble, Robert, Alabama Historical Commission, October, 1994.

Hare, Ruth, resident of present day Childersburg, whose family rented the Charles Butler House from the Butlers in the early 1920's, November, 1993.

Howard, Jan Cleveland, granddaughter of Mrs. Virginia H. Rainwater, Summer, 1993.

McCalum, Leona, older resident of Childersburg and history buff.

Noggle, Thom and Weiss, Dr. Peter, School of Architecture, Auburn University.

Powers, A.J., old time resident of Childersburg and historian of that area, 1994.

Roberts, John Phillip, master gardener and graduate of Auburn University's first class of Horticulture.

Stone, Barbara Hamby, antique appraiser and old home restorer.

Weiss, Dr. Peter, September, 1994.

VERBAL BOUNDARY DESCRIPTION

Commence at the Southwest corner of the Southeast one-fourth of the Northwest one-fourth of Section 20, Township 20 South, Range 3 East, Talladega County, Alabama; thence proceed North 86' 20' 55'' East for a distance of 25 feet to the point of beginning. From this beginning continue North 86' 20' 55'' East for a distance 46.73 feet; thence proceed North 72' 00' 02'' East for a distance of 130.00 feet to a point on the Westerly right-of-way line of 10th Ave. SW; thence proceed North 18' 23' West along the Westerly right-of-way of said street for a distance of 256.30 feet to its point of intersection with the South right-of-way line of the First street SW; thence proceed South 71' 37' 32'' West along the South right-of-way line of said First street SW for a distance of 116.19 feet; thence proceed South 01' 44' 08'' East for a distance of 266.28 feet; thence proceed North 86' 19'' East for a distance of 25 feet; thence proceed South 01' 42' 13'' East for a distance of 25 feet to the point of beginning.

BOUNDARY JUSTIFICATION

This is the boundary currently associated with the property.

United States Department of the Interior
National Park Service

NATIONAL REGISTER OF HISTORIC PLACES
CONTINUATION SHEET

Section Photographs Page 12 Charles Butler House
 Talladega County, Alabama

=====

PHOTOGRAPHS

The following information is the same for all the photographs:

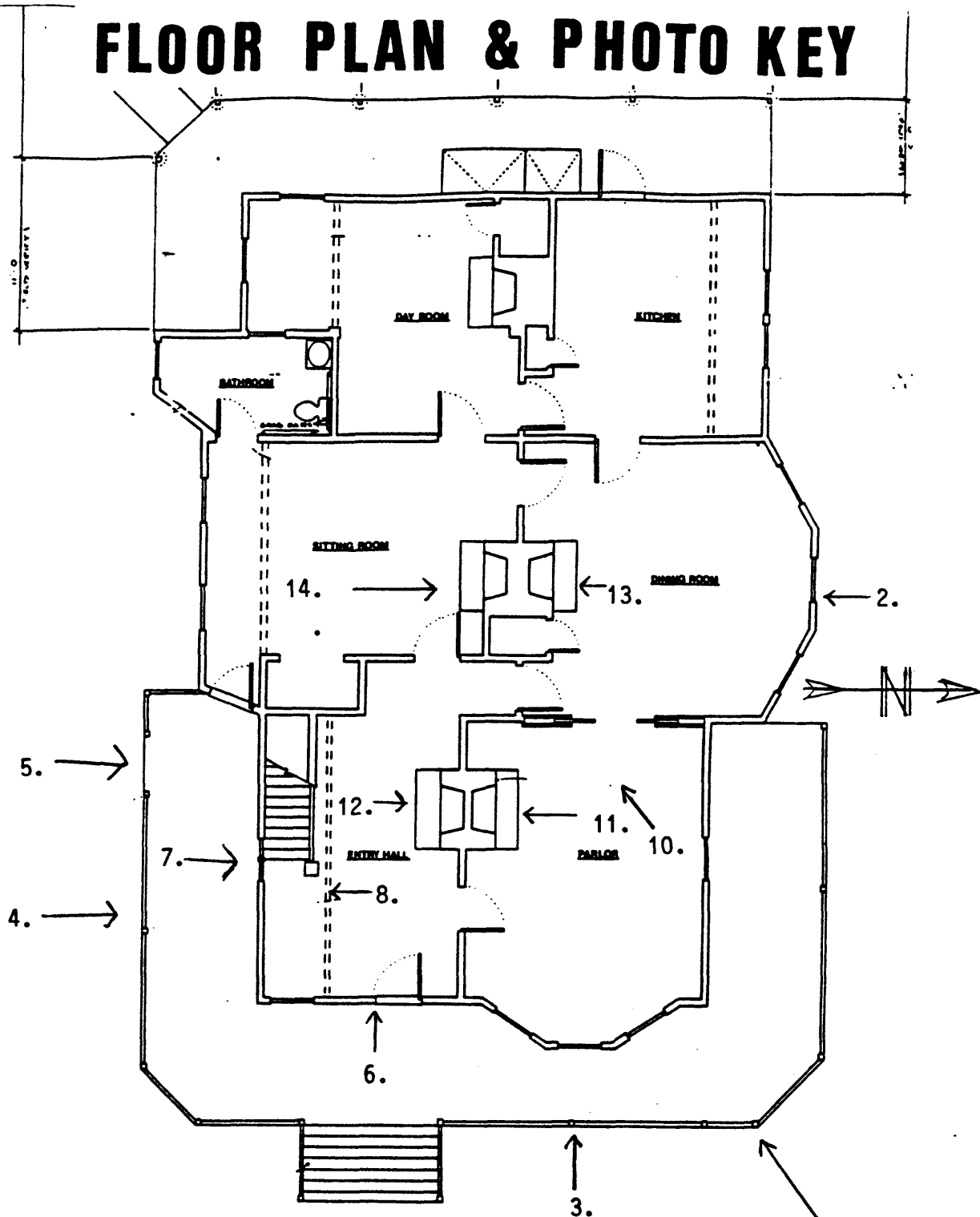
1. Charles Butler House
 2. Childersburg, Talladega County, Alabama
 3. Photographer: Warren C. Hamby
 4. Date of Photographs: July 1994
 5. Location of Negatives: Alabama Historical Commission
-
1. Exterior View of House (camera facing SW).
 2. View of semi-hexagonal bay window (camera facing S).
 3. Detail of main front gable (camera facing W).
 4. Detail of other gable eave (camera facing N).
 5. Decorative gable on South side of house (camera facing N).
 6. View of front door (camera facing W).
 7. View of double sash-type windows (camera facing N).
 8. View of stairway in entry hall (camera facing S).
 9. View of transom and door surround (camera facing N).
 10. View of parlor (camera facing SW).
 11. Detail of parlor mantel (camera facing S).
 12. View of entry hall mantel (camera facing N).
 13. View of dining room mantel (camera facing S).
 14. View of sitting room mantel (camera facing N).
 15. View of mantel in bedroom number one (camera facing S).
 16. View of mantel in bedroom number two (camera facing N).
 17. View of mantel in bedroom number three (camera facing S).
 18. View of mantel in bedroom number four (camera facing N).

United States Department of the Interior
National Park Service

National Register of Historic Places
Continuation Sheet

Section number _____ Page 13 Butler/Harris/Rainwater House, Talladega County Alabama

FLOOR PLAN & PHOTO KEY



FIRST FLOOR PLAN

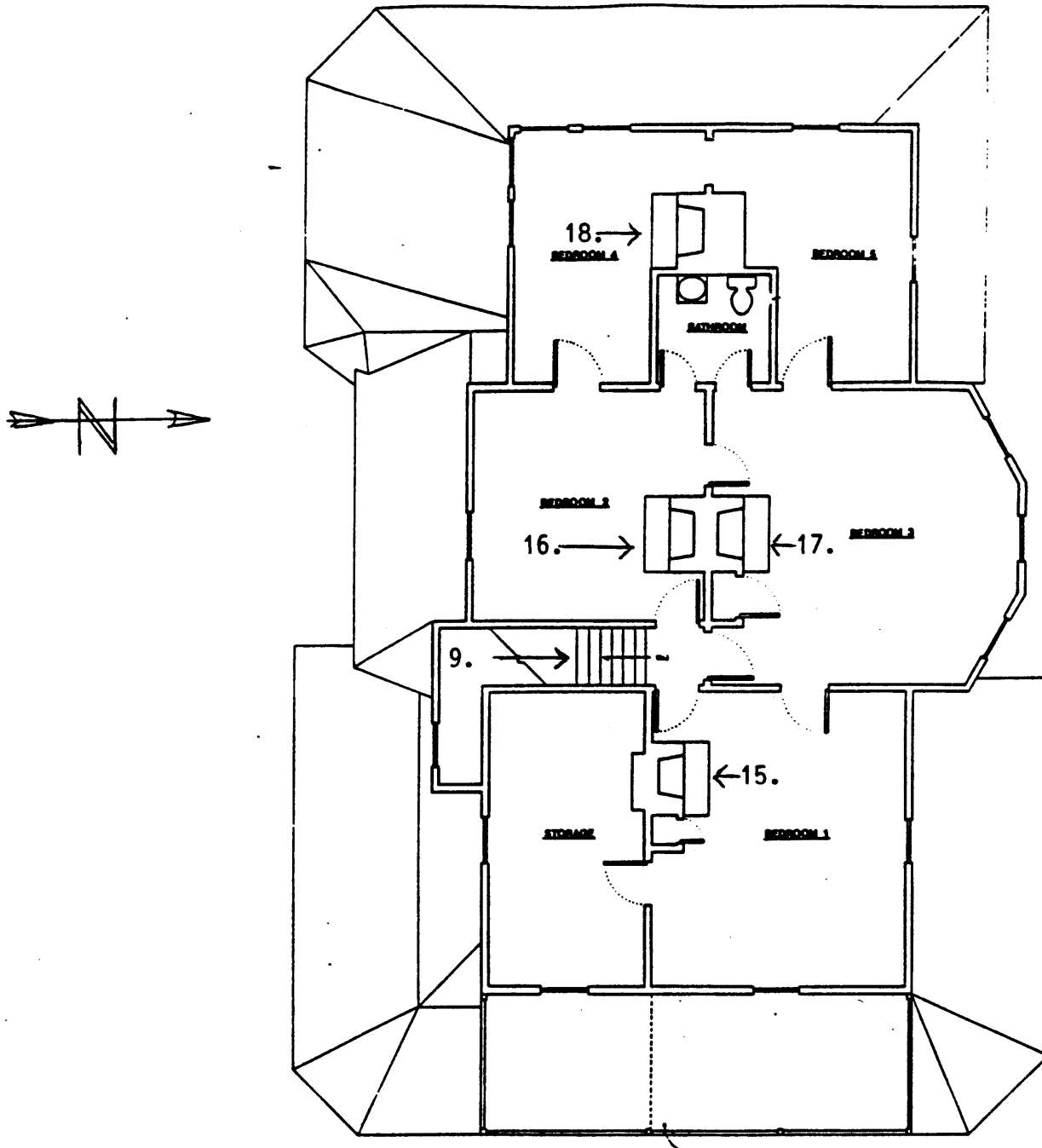
1.

United States Department of the Interior
National Park Service

National Register of Historic Places Continuation Sheet

Section number _____ Page 14 Butler/Harris/Rainwater House, Talladega County Alabama

FLOOR PLAN & PHOTO KEY



SECOND FLOOR PLAN