




BCHANEL FARM - SEVERE BURN - COLORADO - NOV 1



BRANDS FROM THE BRANDS - NO Z

BEWARE
OF
DOG


COLORADO
CENTENNIAL FARM

OWNED BY THE SAME FAMILY
FOR MORE THAN 100 YEARS

COLORADO DEPARTMENT OF AGRICULTURE
COLORADO HISTORICAL SOCIETY
COLORADO STATE FAIR

1876-1976

SCHMIDT FARM - STEFFERSON COUNTY - COLORADO - NO. 3



SCHNEFFELTAN - STEFFEL SAN COUNTRY - GOLD - NO. 4



SHANE L FARM - 10000 OLD FARM RD - NO 5



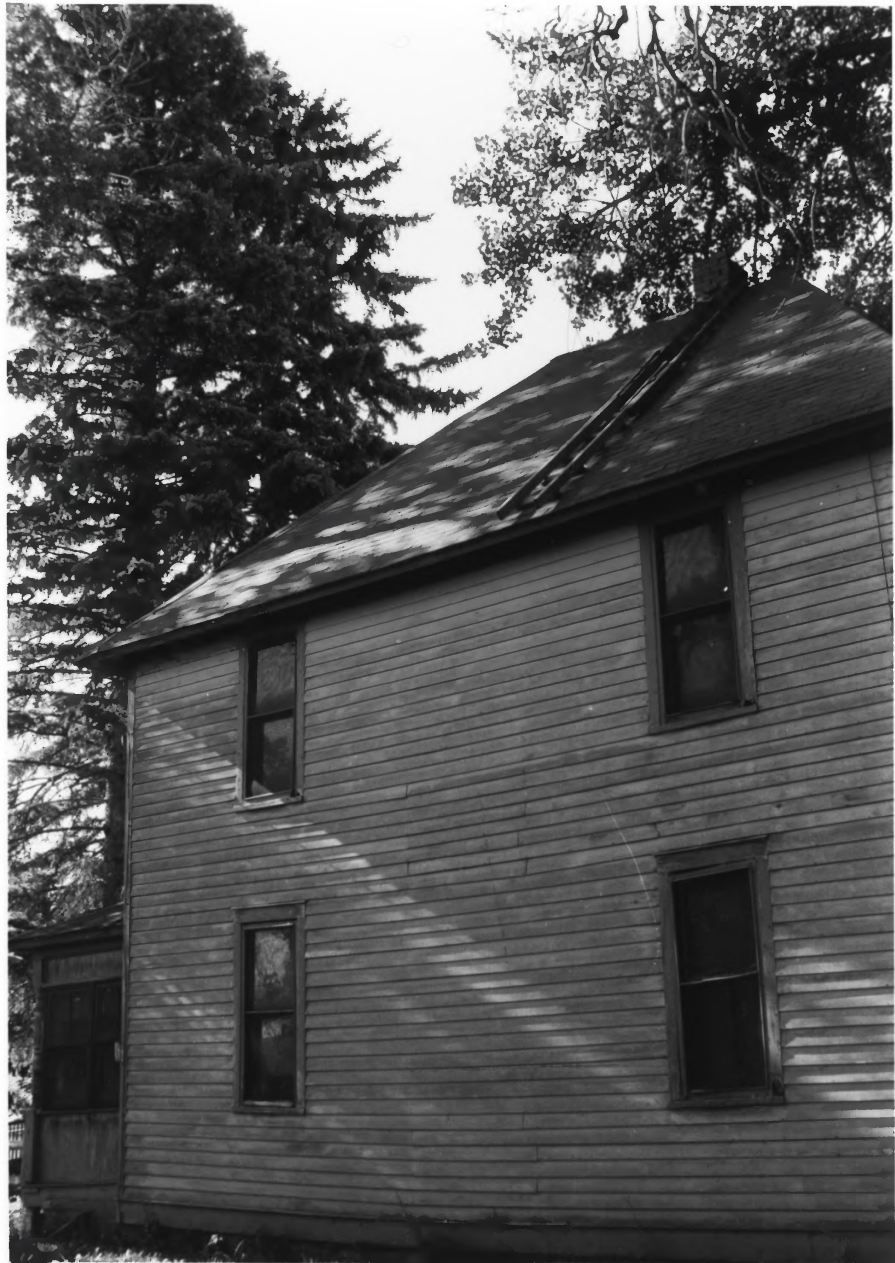
ESGAM FLM FARM STE STE FARM SON DON DON FARM DON - NO 6



BRANDENBURG COUNTY, MISSOURI



SHANTAL TAMERSON OUNNY OUNDO - NO. 8



6 CHANFELL FARM - JEFFERSON COUNTY - COLORADO - NO. 9



50 N. W. 1/4 T. 1 N. R. 1 E. S. 10 N. CO. 10 R. 1 E. NO. 10



SHANLEY FARM - JEFFERSON COUNTY - CALIFORNIA - NO. 11



SPANISH LAKE RESORT ON COLOADO NO. 12



FRANZ JOSEF RAU - DONOR - NO. 13



BRANDS OF THE
WORLD



NOV 19 1950



THE UNIVERSITY OF CHICAGO PRESS



SCANDAL FROM DOOR TO DOOR - NO. 17



SONNENBRUNNEN - SONNENBRUNNEN - SONNENBRUNNEN - SONNENBRUNNEN - SONNENBRUNNEN



SEARCHED INDEXED SERIALIZED FILED
NOV 10 1964
FBI - MEMPHIS



BY ALL THE STARS - YOU DO - NO, NO



SCANNED BY - DOLDRAND - NO. 21



SHANFEL FARM - JEFFERSON COUNTY - COLORADO - NO. 22



POSTED
NO TRESPASSING
KEEP OUT

SWANWELL FARM

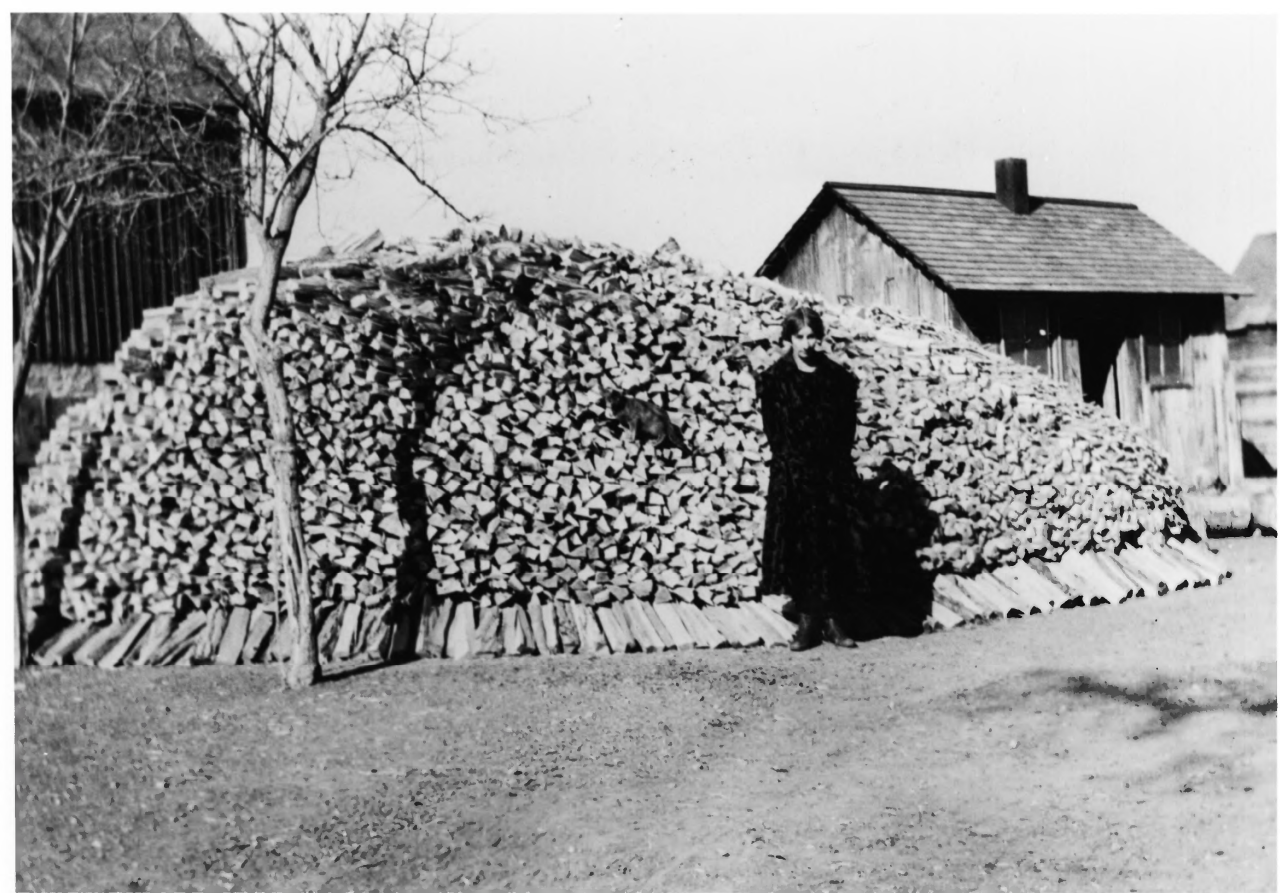
JEFFERSON COUNTY - COLORADO - No. 513



SUNNY DAY - BERRY COUNTRY - NO 44



SCIENCE AND ARTS SOCIETY



SCHNEELIFT - SEFTERSON COUNTY - COLORADO - NO. 2A



BROWN ELLIOTT FARM - SEVERAL RESON COUNTY - COLORADO - NO. 9A



SCHMIDT FARM - SEFFERTSON COUNTY - COLORADO - NO. 4A



SCHNITZLHANS SPONCOONNOES



SEARCHED INDEXED SERIALIZED FILED
FBI - MEMPHIS
MAY 10 1968
FBI - MEMPHIS



EWING - DEERSON COUNTY - COLORADO - NO. 7A



SCYNERL FARM - SEAFARSON COUNTRY COLFARSON NO BA