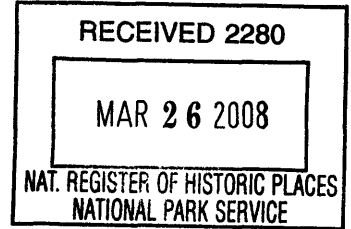


NPS Form 10-900a
(8-6)

United States Department of the Interior
National Park Service



374

National Register of Historic Places

1. NAME OF PROPERTY

historic name The Elgin Block

other sites _____

2. LOCATION OF PROPERTY

street & number 225- 231 Center St. Vicinity

City or Town Elgin State Iowa Code IA County Fayette Code 065 Zip 52141

3. STATE/FEDERAL AGENCY CERTIFICATION

As the designated authority under the National Historic Preservation Act of 1966, as amended, I hereby certify that this nomination ___ request for determination of eligibility meets the documentation standards for registering properties in the National Register of Historic Places and meets the procedural and professional requirements set forth in 36 CFR Part 60. In my opinion, the property meets ___ does not meet the National Register Criteria. I recommend that this property be considered significant ___ nationally ___ statewide locally. (___ See continuation sheet for additional comments.)

Barbara A. Mitchell, DSHPO
Signature of certifying official

March 25, 2008
Date

STATE HISTORICAL SOCIETY OF IOWA
State or Federal agency and bureau

In my opinion, the property ___ meets ___ does not meet the National Register criteria. (___ See continuation sheet for additional comments.)

Signature of commenting or other official

Date

State or Federal agency and bureau

Elgin Block
Name of Property

Fayette County, Iowa
County and State

4. NATIONAL PARK SERVICE CERTIFICATION

I, hereby certify that this property is:
 entered in the National Register Edson H. Beall 5-8-08
see continuation sheet.
 determined eligible for the National Register _____
see continuation sheet
 determined not eligible for the National Register _____
 removed from the National Register _____
other (explain): _____

[Signature]
Signature of Keeper of Action

_____ Date

5.. CLASSIFICATION

Ownership of Property (Check as many boxes as apply)

- private
- public-local
- public-State
- Public-Federal

Category of Property (Check only one box)

- building(s)
- district
- site
- structure
- object

Number of Resources within Property

Contributing	Noncontributing
<u>1</u>	_____ buildings
_____	_____ sites
_____	_____ structures
_____	_____ objects
<u>1</u>	_____ TOTAL

Number of contributing resources previously listed in the National Register 0

Name of related multiple property listing (Enter "N/A" if property is not part of a multiple property listing.) N/A

6. FUNCTION OR USE

Historic Functions (Enter categories from instructions)

Current Functions

Cat:

- COMMERCE/TRADE/specialty store
- SOCIAL/ meeting hall
- DOMESTIC/multiple dwelling
- HEALTHCARE/clinic
- RECREATION/CULTURE/music facility

- COMMERCE/TRADE/specialty store
- RECREATION/CULTURE/museum
- DOMESTIC/multiple dwelling

Elgin Block
Name of Property

Fayette County, Iowa
County and State

7.. DESCRIPTION

Architectural Classification (Enter categories from instructions)

A form of Italianate

Materials (enter categories from instructions)

Foundation Stone
Roof Synthetics/rubber
Walls Brick
other Wood

Narrative Description (Describe the historic and current condition of the property on one or more continuation sheets.)

8. STATEMENT OF SIGNIFICANCE

Applicable National Register Criteria (Mark "x" in one or more boxes for the criteria qualifying the property for National Register listing)

- A. Property is associated with events that have made a significant contribution to the broad patterns of our history.
- B. Property is associated with the lives of persons significant in our past.
- C. Property embodies te distinctive characteristics of a type, period, or method of construction or represents the work of a master, or possesses high artistic values, or represents a significant and distinguishable entity whose components lack individual distinction.
- D. Property has yielded, or is likely to yield information important in prehistory or history.

Criteria Considerations (Mark "x" in all the boxes that apply.)

- A owned by a religious institution or used for religious purposes.
- B removed from its original location.
- C a birthplace or a grave.
- D a cemetery.
- E a reconstructed building, object, or structure
- F a commemorative property.
- G less than 50 years of age or achieved significance within the past 50 years

Elgin Block
Name of Property

Fayette County, Iowa
County and State

Areas of Significance (Enter categories from instructions)

Commerce
Entertainment/Recreation

Period of Significance 1872 to 1956

Significant Dates 1872

Significant Person (Complete if Criterion B is marked above)

N/A

Cultural Affiliation

Architect/Builder Thoma, Lewis
Holser, Henry and August

Narrative Statement of Significance (Explain the significance of the property on one or more continuation sheets.)

9. Major Bibliographical References

(Cite the books, articles, and other sources used in preparing this form on one or more continuation sheets.)

Previous documentation on file (NPS)

- preliminary determination of individual listing (36 CFR 67) has been requested.
 previously listed in the National Register
 previously determined eligible by the National Register
 designated a National Historic Landmark
 recorded by Historic American Buildings Survey
 recorded by Historic American Engineering Record

Primary Location of Additional Data

- State Historic Preservation Office
 Other State agency
 Federal agency
 Local government
 University
 Other

Name of repository: Elgin Library, Elgin Historical Society, Fayette County Historical Society

Elgin Block
Name of Property

Fayette County, Iowa
County and State

10. GEOGRAPHICAL DATA

Acreage of Property less than an acre

UTM References (Place additional UTM references on a continuation sheet)

	Zone	Easting	Northing	Zone	Easting	Northing
1	<u>16</u>	<u>393968</u>	<u>4654756</u>	<u>3</u>	_____	_____
2	_____	_____	_____	<u>4</u>	_____	_____

_____ See continuation sheet.

Verbal Boundary Description (Describe the boundaries of the property on a continuation sheet)

Boundary Justification (Explain why the boundaries were selected on a continuation sheet.)

11. FORM PREPARED BY

name/title Alice Howard, Ruth Jacobs, Donna Meinhard e-mail donna37@alpinecom.net
Address 404 Mill St., Elgin, Iowa 52141

organization Elgin Historical Society
date March 1, 2006

street & number 231 Center St.
Telephone 563-426-5989 (Donna Meinhard)

city or town Elgin State IA Zip code 52141

ADDITION DOCUMENTATION

Submit the following items with the completed form:

Continuation Sheets

Maps

- A USGS map (7.5 or 15 minute series) indicating the property's location.
- A sketch map for historic districts and properties have large acreage or numerous resources.

Photographs

- Representative black and white photographs of the property.

Additional items (Check with the SHPO or FPO for any additional items)

Elgin Block
Name of Property

Fayette County, Iowa
County and State

Property Owner

(Complete this item at the request of the SHPO or FPO)

name Elgin Historical Society
street & number 231 Center Street
telephone 563-426-5989
city or town Elgin State Iowa zip code 52141

Paperwork Reduction Act Statement: This information is being collected for applications to the National Register of Historic Places to nominate properties for listing or determine eligibility for listing, to list properties, and to amend existing listings. Response to this request is required to obtain a benefit in accordance with the National Historic Preservation Act, as amended (16 U.S.C. 470 et seq.)

Estimated Burden Statement: Public reporting burden for this form is estimated to average 18.1 hours per response including the time for reviewing instructions, gathering and maintaining data, and completing and reviewing the form. Direct comments regarding this burden estimate or any aspect of this form to the Chief, Administrative Services Division, National Park Service, P.O. Box 37127, Washington, DC 20013-7127; and the Office of Management and Budget, Paperwork Reductions Project (1024-0018), Washington, DC 20503.

National Register of Historic Places Continuation Sheet

Section 7

Page 1

Elgin Block, Fayette County, Iowa

ARCHITECTURAL DESCRIPTION

SUMMARY

The "Elgin Block", briefly known as the Brick Building, was built in 1872 by local contractor and builder, Lewis Thoma. Two unrelated Holzers, August and Henry did the brickwork, but little else is known at this time. It is located on the south side of Elgin's principal commercial thoroughfare, Center Street. It consists of three two-story and one three-story rectangular shaped sections, constructed largely of brick fired in nearby sites. The solid masonry walls rest on foundations of native limestone and were originally capped with roofs covered with tar and gravel. Currently they are of synthetics and rubber.

The Block exhibits the influence of the Italianate style with its semi circular arched windows; window hood molds with corbel stops; and facades, which feature cornices with brick and stone moldings with geometric medieval motifs, capped with battlemented parapets. The facades of numbers 231 and 229 are nearly intact, as are the interiors of these two.

Each section is a brick rectangular space, unadorned in the interior. Three of the sections measured 60 x 22 feet. The east section, number 225, was originally 40 x 22 feet. It is possible that the original owner decided a harness shop did not require such a large space and used the rear of the building for horses and vehicles needing his attention.

At various times the owners have added additions to the rear of each building. The east half of Lot 7, number 225, now houses a garage and four-bedroom apartment (second floor) and measures 60 by 22 feet. Numbers 225 and 229 have utility additions that extend the two buildings an additional 12 feet. Number 231, the far west section has the "schoolhouse" addition added that is 24 by 16 feet. There is little else on the site which was platted as Lots 7 and 8 in Block One of early Elgin. These lots were stated at 60 by 100 feet in the Plat dated July 4, 1854.

While facades of 225 and 227 have been significantly altered and additions have been added to the rear the building remains largely as it was built. The interiors of numbers 231 and 229 still retain the original ceilings, floors and open space. A number of temporary cubicles have been added to the *Echo* office section, number 227. Little remains of the original harness interior. It was converted to regular shop space in the 1930s.

National Register of Historic Places Continuation Sheet

Section 7

Page 2

Elgin Block, Fayette County, Iowa

Eventually we will restore the Concert Hall space and perhaps the third floor also. Currently they are closed for safety reasons.

The original brick schoolhouse constructed in 1875 was demolished in 1990 and salvaged for the building of a small 24 by 16 foot simple brick "schoolhouse" that is now attached to the rear of the west section, housing the Elgin Historical Society.

FRONT FACADE

The front facade, facing Center Street, originally showed decorative parapets and center molding gracing the third story section, while the west two sections hold a simple brick sign with decorative ends of five section flower medallions, originally reading "Elgin Concert Hall". The original sign topping the far east section stating "C. Theo Schmid" and the lettering "Elgin Lodge, IOOF No. 220" on the three-story building are no longer present. It is not known when these details were lost.

The front of the building has four double door entries, with a center single door entry to the second and third floors. A continuous detailing of decorative brick runs the length of the building above the first floor windows. At ground level pairs of four-pane fixed showcase windows flank double entry doors. Originally wooden picture frame type panels formed an apron under the windows. The west section retains the original work. The rest of the sections have been modified as owners "modernized."

Twelve identical semi circular arched windows with limestone sills run the length of the four sections. The third story section also features three taller semicircular windows of similar design. This section is topped with two slightly protruding piers that extend down into the second story. "Yellow" white brick manufactured locally at the time is used in the moldings above the second story windows and as decorative brickwork across the top of this section. Above these are three and one half feet of red and white brick in decorative patterns.

The two west sections have decorative brickwork above the second floor and are topped with a sign, which originally read "Elgin Concert Hall".

National Register of Historic Places Continuation Sheet

Section 7

Page 3

Elgin Block, Fayette County, Iowa

WEST and EAST FACADES

The two ends are basically plain brickwork with three windows with flat limestone lintels and limestone sills. There is a second story fire escape on the east end, not originally there but brought in from the 1875 schoolhouse.

FACADE, south side

Attachments have been added to the rear of all sections at various times. Elgin town records were lost in a fire and we have found little documentation as to the times or purposes for which the additions were originally built. Currently the schoolhouse addition extends number 231; an old shed-type structure extends number 229; the largest two section extension has been built on number 227, which now houses the offices and storage of the *Elgin Echo*; and a small extension was built to enlarge the apartment with corresponding space below on number 225.

INTERIOR

The block measures 94 feet wide; the units measure 22 feet wide, with stairway between sections numbers 229 and 227. The three west units are 60 feet deep with different extensions. The school house is 16 feet deep added onto the 60 foot length of the west unit. The far east unit is the smallest at 40 feet deep with a 26 foot extension, which houses a garage on the ground floor and apartment on the second floor. The extensions on number 227, which now houses the newspaper, have been recently remodeled to accommodate offices. Number 229 has a shed type extension, now unused.

The interior of number 231 is basically unchanged, with original hardwood floors and narrow slat ceiling, now covered with suspended ceiling. Number 229 is only slightly modified and currently houses an antique store. Number 227 has been carpeted and drywalled and several cubicles have been erected to house the newspaper operations. Number 225 was remodeled after the harness shop business closed in the 1930s to house a barber shop and extended to accommodate a four-bedroom apartment above. It has been little modified since then except for cosmetic updates.

The two apartments are currently occupied. The second floor concert hall is unused, as is the third floor space.

BASEMENTS

Each section has a partial basement with limestone walls, which holds the furnaces. It is believed the basement of number 231 was the site of a tavern for a short period of time.

National Register of Historic Places Continuation Sheet

Section 7

Page 4

Elgin Block, Fayette County, Iowa

HISTORICAL INTEGRITY

Today the Elgin Block stands much as it did at the turn of the twentieth century, serving as one of the significant commercial buildings in Elgin's business district. It maintains a fairly high degree of all 7 aspects of integrity: location, design, setting, materials, workmanship, feeling and association.

The historic design and materials have not been significantly altered except for the store windows of number 225 and 227, which have been covered and made smaller. . The finials above number 227 and the signs disappeared sometime between 1907 and 1931, but the rest of the facade is as it was.

The interiors of numbers 229 and 231 still contain the wooden ceilings and floors. They were simple rectangles with little decoration and remain so. The interior of number 227 has been altered with a number of cubicles to house various newspaper offices. The interior of number 225 has been altered from the original harness shop. Sometime in the 1930s it was converted to a barbershop and we assume there were changes at that time.

At various times shed extensions have been added and in a couple cases taken down, especially in the case of number 225 which began as a blacksmith harness shop. The newest is the schoolhouse addition to the rear of number 231. Except for that addition and the second addition on number 227, these additions have been present for some time.

The Elgin Block, along with its commercial setting including the old Bank building and several 1890s buildings gives the town its historic feel. It is an important link to our historic beginnings and continues its association with the commercial history of Elgin.

United States Department of the Interior
National Park Service

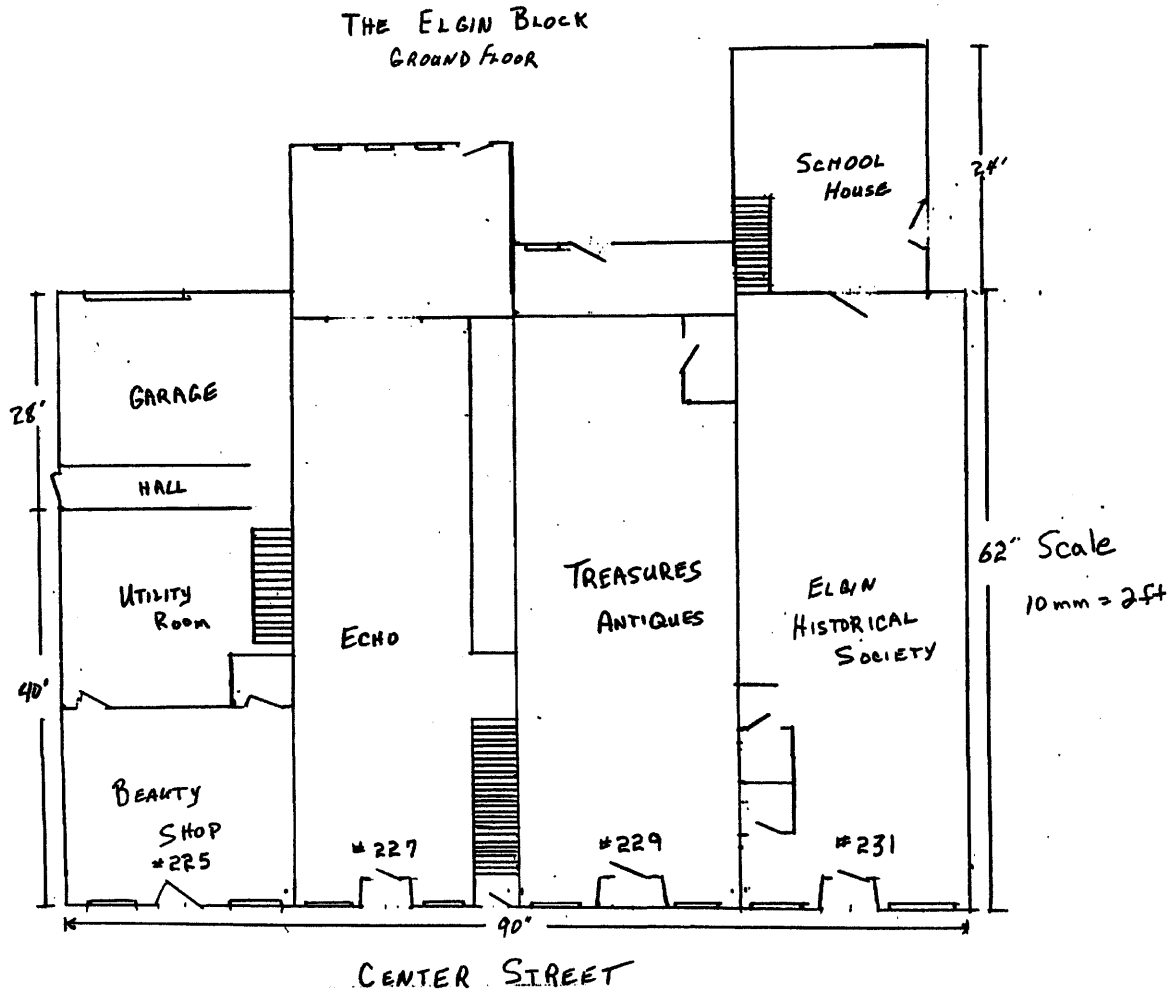
NATIONAL REGISTER OF HISTORIC PLACES CONTINUATION SHEET

Section number 7 Page 5

CFN-259-1116

Elgin Block, Fayette County, Iowa

Drawing – Elgin Block First Floor



Drawing: Arleon Kelley 2006

United States Department of the Interior
National Park Service

NATIONAL REGISTER OF HISTORIC PLACES CONTINUATION SHEET

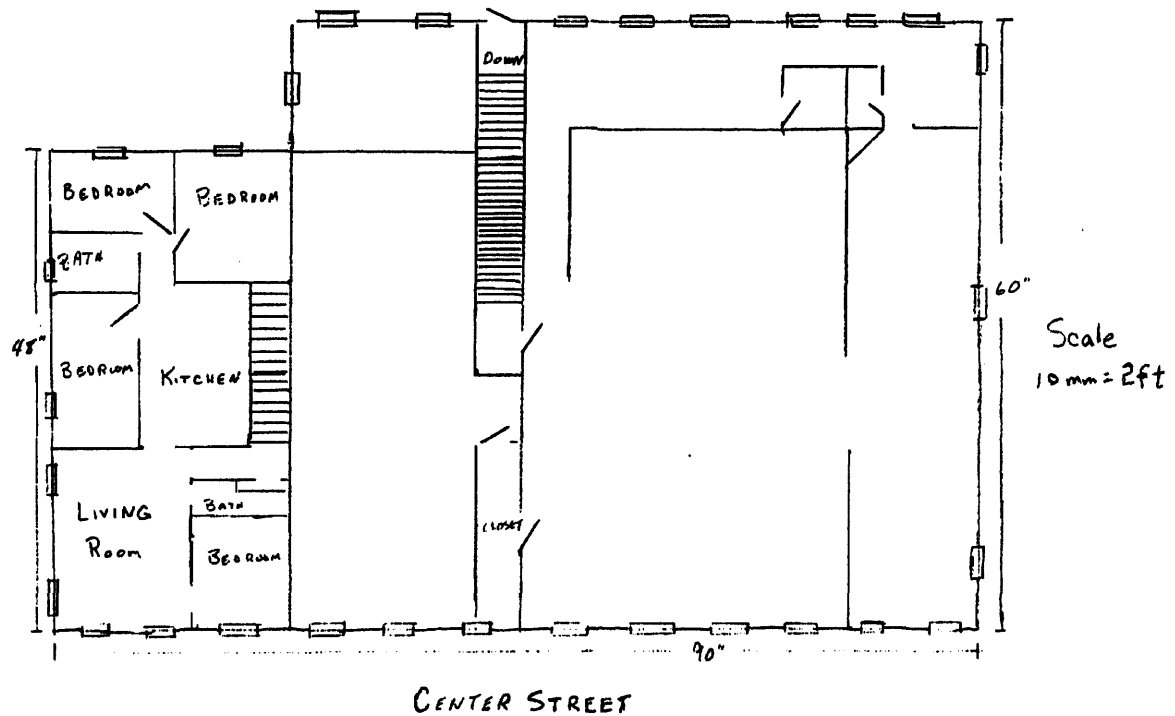
Section number 7 Page 6

CFN-259-1116

Elgin Block, Fayette County, Iowa

Drawing – Elgin Block Second Floor

THE ELGIN BLOCK
SECOND FLOOR



Drawing: Arleon Kelley 2006

United States Department of the Interior
National Park Service

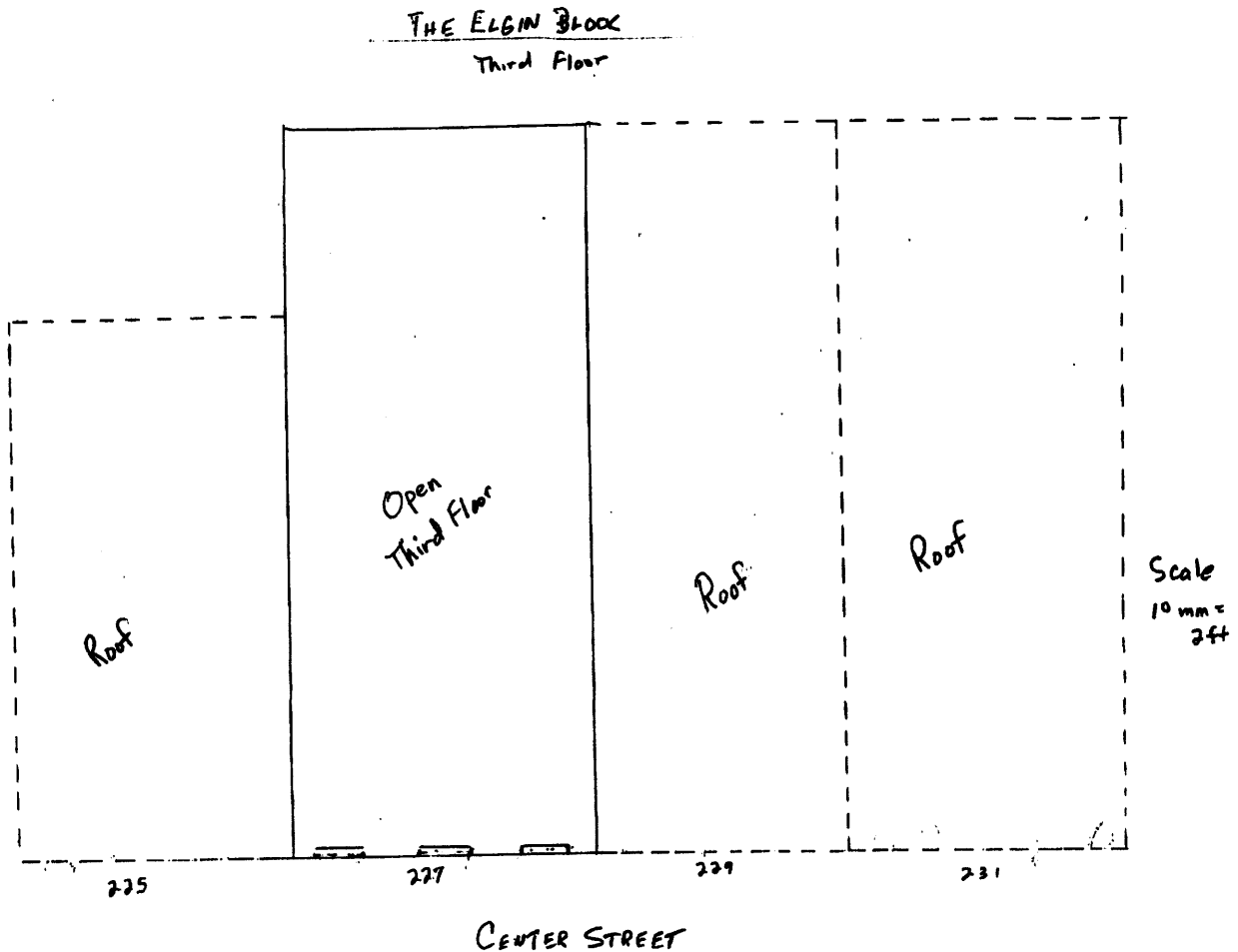
NATIONAL REGISTER OF HISTORIC PLACES CONTINUATION SHEET

Section number 7 Page 7

CFN-259-1116

Elgin Block, Fayette County, Iowa

Drawing – Elgin Block Third Floor



Drawing: Arleon Kelley 2006

National Register of Historic Places Continuation Sheet

Section 8

Page 8

Elgin Block, Fayette County, Iowa

SUMMARY STATEMENT OF SIGNIFICANCE

SUMMARY OF SIGNIFICANCE

The Elgin Block is locally significant under National Register Criterion A because it reflects an early effort by local merchants to work together on a large-scale project that would benefit the entire community. The completion of this substantial business block in 1872 not only provided Elgin with its first major brick building but actually saved the town when the railroad located in the adjoining village of Lutra. The new block helped Elgin retain commercial supremacy and eventually absorb Lutra and its rail connection. Not only did the Elgin Block serve as the town's commercial center, but its concert hall and lodge spaces made it key to the town's social and cultural life as well.

INTRODUCTION

Built in 1872, the Elgin Block played a significant role in strengthening the business district of Elgin, when that same year the Burlington, Cedar Rapids and Minneapolis Railroad was routed through Lutra, which was a mile away. In "History of Fayette County" 1878, the writer commented, "The business is being gradually and inevitably drawn to the new town, [Lutra], however, and Elgin has discovered, as many other Western towns have done, that railroads are town destroyers as well as town builders." But within a few years Elgin was the predominant village and today, Lutra is just the name of a part of Elgin.

The building also played a part in the social and cultural life of the community, housing graduations, concerts, and other community events and being the site of both the Silver Leaf Lodge and the Order of the Eastern Star.

The "Elgin Block" is unique. It was an early "business condominium" built as one building with four sections each owned separately. The first floors were utilized as business space, while the second floors of numbers 225 and 227 were apartments, originally occupied by the owners of the businesses. The third floor of number 227 housed the quarters of the Lodge and Eastern Star, while the second floor of numbers 229 and 231 was one large "concert hall." Originally a large wooden sign proclaimed Elgin Concert Hall across much of the two buildings. The unusual arrangement reflected the continuing cooperative practice and entrepreneurial spirit of the people of Elgin. This willingness to work cooperatively is seen today in the strength of the local

National Register of Historic Places Continuation Sheet

Section 8

Page 9

Elgin Block, Fayette County, Iowa

North East Iowa Cooperative, which is the center for much of the grain industry as well as a supplier for lumber and farm needs.

HISTORICAL SIGNIFICANCE

In 1837 Chancey S. Edson and W. Grant built a mill on the Otter Creek near its confluence with the Turkey River, which is located on the east edge of the present town of Elgin in Fayette County. Since this was on Sac and Fox land and not opened for white settlers until 1848 they were ordered to leave: "Indians set fire to the building and this first civil work in the county was destroyed." (*History of Fayette County 1878*, p. 727)

In the spring of 1848 Samuel Connor, along with Simeon B. Forbes, Thomas Smith and Jacoby Ashby purchased claims from William McElwee. Mr. Connor took Section 14 which holds most of what became Elgin. He erected a log house on NE 1/3 of SE 1/4 of Section 14. This was the first house in Pleasant Valley Township. Very shortly Benjamin Dimond arrived and with Connor built the first of several sawmills located in Elgin.

Mr. Connor states that in 1848 when he came to Sac Bottom, where Elgin now stands, it was "for a long distance lined with Indian wigwams as thick as they could stand and near them large heaps of fish bones." For years evidence of large Indian mounds was visible in the cornfields bordering the town testifying to even the pre-historic excellence of the area for human habitation. Development proceeded rapidly with the opening of the Neutral Territory and farmers and tradespeople from Switzerland, Norway and Germany settled the town and surrounding area.

The town of Elgin was laid out in the fall and winter of 1851-52, by Samuel Connor, M.V. Burdick being the surveyor. Mr. Burdick named it Elgin in honor of Elgin, Illinois his native community. The plat was recorded in 1855. By the later part of 1855, sawmills, a grist mill, a flour mill, carding operation, hotel, post office and church were established. A small frame school was built several blocks north of the business street and then in 1860 this building was sold and removed. In its place a larger brick school house was erected by Lewis Thoma, on land roughly between Lutra and Elgin. As the town grew so did the number of children going to school. When Lutra, a small town a mile west of Elgin began sending its children to school in Elgin it again became necessary in 1875 to build an even larger brick school. Once again Mr. Thoma built it at a cost of \$8,000. In 1991 this building was demolished and some of the bricks and materials from that 1875 school building are now in place in the "schoolhouse" attached to

National Register of Historic Places Continuation Sheet

Section 8

Page 10

Elgin Block, Fayette County, Iowa

the back of number 231 Center St., the location of the Elgin Historical Society.

By 1874 there were 34 businesses listed in the *Business Directory* (a small publication found in Fayette County files), including five mercantiles, wagon makers, a shoemaker, and several carpenters and cabinet makers, as well as several blacksmiths and stonemasons. A bank and the *Elgin Times*, forerunner of the current *Elgin Echo*, were begun in the early 1870s. The 1870s saw a great deal of building in both Lutra and Elgin.

In 1872 Mr. Lewis Thoma built what was first known as the “Brick Building,” later the “Elgin Block.” In as much as a railroad came through the edge of Lutra and nearly a mile from the center of Elgin in 1871, it is interesting to speculate if this was a factor in the Elgin interest in constructing a large brick building in its town center. With this investment, one wonders what other factors may have been in play, since Connor, Dimond and Baldwin, all early owners of the Elgin lots, now donated a depot and right of way in Lutra and together platted building sites and erected a hotel near the depot. A stagecoach ran between the hotel and depot in Lutra and the center of Elgin.

An early report stated, “The business is being gradually and inevitably drawn to the new town, Lutra, however, and Elgin has discovered, as many other Western towns have done, that railroads are town destroyers as well as town builders.” (*History of Fayette County, Illustrated*, p. 525) Perhaps the Brick Building encouraged others to build the solid brick and stone buildings found in Elgin, while Lutra only built a wooden structure and a brick hotel, so, by the turn of the century it was clear that Elgin would dominate.

The “Elgin Block” is a four-section brick building, probably made with brick from one of the local brick yards. It was designed to house four businesses, owned by four separate owners. The ownership arrangement required significant cooperation since three of the sections shared space and common stairways.

The Elgin Block is the oldest brick building in Elgin still in use today. The early wooden Freiburgher house, which housed a furniture business, still stands and is used as a residence. It is located in the residential area of Elgin. A brick building that was part of a brewery business of the time also still stands but is located outside of the business district.

National Register of Historic Places Continuation Sheet

Section 8

Page 11

Elgin Block, Fayette County, Iowa
The Significance of Individual Sections

Number 231 First Floor

Evan E. Lien, firm of Lien and Thoma General Merchants came to Elgin in 1872. Thoma and Lien were the first merchants in the "Thoma" section. Lewis Thoma took over sole ownership in 1880 and the family continued the general store until 1965. Max Thoma died in 1971, being the last of the original owning families. At that time the interior was little changed from the early years.

Through the years this section has housed an office for a construction business, a woodworking shop, and a consignment business until the Elgin Historical Society purchased it in February of 1990. The brick "schoolhouse" was built on in 1994.

Number 229 First Floor

The first business to occupy this section was a jewelry and drug store owned by George Stoehr, born in the kingdom of Bavaria, August 26, 1833. This was continued by the Stoehrs family until the early 1900's. Subsequently the Muehlethaer family operated "The City Drug," followed by clothing stores. In 1987 an entrance was cut between numbers 229 and 227.

Second Floor of 231 and 229

The second floor is joined with number 229 as one large room. The large sign which declared "Elgin Concert Hall" is still visible, but the lettering has disappeared. This space housed the high school graduations until an Opera House was built in 1890-91. From 1887 to 1985 the Silver Leaf Lodge, No. 290, and later No. 82 held its meetings in this room. The Eastern Star began meeting in 1894 and continued into the 1980s. The Hall and dressing rooms still exist but no use is currently being made of this space. There are articles about band concerts, "Delightful Dozen," Elgin's "Domino Band" and "Cornet Band" appearances, in the early 1900s. Wedding receptions and other larger parties were held here. Jake Schneider, current resident recalls prize fights of six-minute rounds, being held in the Hall in the 1930s. The cost to spectators was \$1.30. Other community events were held here including oyster suppers, which were quite a novelty at that time in middle America.

Today the hall is unused but in much the same condition, due to the instability of the inside stair.

National Register of Historic Places Continuation Sheet

Section 8

Page 12

Elgin Block, Fayette County, Iowa

Number 227 First Floor

In 1879, Walter Henry Finke, “dealer in drugs and patent medicines, wallpaper and books,” established a business in number 227. In 1891 it was known as “one of the best drug stores in the County.” (*Portrait Biographical Album of Fayette County, Iowa*. p. 645) It remains to be discovered what occupied this space those first seven years. At some point the Stoehr and Finke stores became known as the Finke and Stoehr Drug Store. This drug store was operated until 1931 when Elgin’s Home Town Bakery was opened in the space by Mattie Zurbriggen. It is noteworthy that the “Elgin Block” has housed several businesses owned by women.

The “*Elgin Echo*” occupied this location from 1946 until 1971 when it moved to a metal building which burned, losing much of the archives. It moved back to occupy the space in 1998. This newspaper is the third locally owned newspaper, beginning with the *Elgin Times* started by Henry C. Hammond, in 1875, and then the *Elgin Reporter*, begun by E.D. Alexander in 1880. (*History of Fayette County*. p. 161). This was succeeded by the *Elgin Echo*, which is once again operating in this location.

Number 227 Second Floor

One of the early physicians, Dr. Ainsworth had his office here until 1896 when Hattie John opened a millinery shop. Later the owner of the *Elgin Echo*, Richard Strauch, lived here. It is still used as an apartment.

Number 227 Third Floor

This is the only three-story section. A sign on the front proclaims the Order of IOOF. The Elgin Lodge IOOF Number 220 and the Rebekahs used this floor regularly. It was also used for parties and dances. For a brief time it was used as a “motion picture hall”. It is now closed for safety reasons.

National Register of Historic Places Continuation Sheet

Section 8

Page 13

Elgin Block, Fayette County, Iowa

Number 225 First Floor

In 1867 C. Theo Schmid came to Elgin. He moved his harness shop into the new "Elgin Block" in 1872. His son continued the business until the 1930s. Mr. Schmid was prominent in Elgin affairs and became one of the directors of the Elgin Canning Company, which began in 1882. Following the harness business a barber shop was operated by several owners until 1981 when it became the Shear Lock Beauty Shop and then the Downtown Hair Design, which is there today.

Number 225 Second Floor

The second floors of 227 and 225 were meant as homes for the owners of the businesses. While owners have not recently lived there, this apartment is still occupied.

The Schoolhouse Attachment

This is a recently built addition on the back of number 231. When the 1875 brick schoolhouse was demolished in 1990, the Historical Society felt that a simple brick building to include the front entry doors, the newel post and the bricks and framing from the old school would provide not only additional display space but also reminders of the old schoolhouse. The intent is to develop this space with local school history.

PRESENT STATUS OF PROPERTY

Currently the Elgin Historical Society occupies section number 231. A new antique business has recently opened in number 229. The *Elgin Echo* newspaper is housed in number 227 and a beauty shop is located in number 225. An apartment is occupied on the second floor of that section, while the other sections remain closed. The section number 231 still retains much of its original integrity. Number 229 remains largely intact internally, while numbers 227 and 225 have been modified both inside and on the front facade.

The Elgin Historical Society hopes to continue to develop their space, highlighting the history of our town. The purpose of this nomination is not only to encourage the preservation of this building but to highlight the historical importance of the block.

National Register of Historic Places Continuation Sheet

Section 9 Page 14

Elgin Block, Fayette County, Iowa

BIBLIOGRAPHY

1. *History of Fayette County, Illustrated*. Chicago:Western Historical Company, 1878.
2. *Past and Present of Fayette County Iowa, vol. 2*. Indianapolis: B.F. Bowden and Company, 1901.
3. *Elgin, Then and Now, 1848-1988*. Elgin, Ia.:Elgin Historical Society, 1988.
4. A. J. Andreas, *Illustrated Historical Atlas of the State of Iowa*. Iowa State Historical Society, 1875, p. 566.
5. *Portrait Biographical Album of Fayette County Iowa*. Chicago, Il.:Lake City Publishing Company, 1891.
6. *Out of the Midwest: A Portrait*. Marceline, Mo.:Walsworth Publishing Company, 1976.
7. *Standard Atlas of Fayette County, Iowa*. 1916.
8. Fayette County Plat Books. 1855, p. 21; 1860, p. 87; 1879, p. 40; 1896, p. 40.
9. Deed Record Books, Fayette County Abstract Office and Fayette County Offices of Recorder.
10. Census Records, 1850, 1860, 1870, Fayette County Courthouse, West Union, Ia.
11. Interview, June 1990, Louis Thoma, grandson of Lewis Thoma, conducted by Friends of the Library .
12. Interview, Gladys Schori, conducted by the Friends of the Elgin Library, about history and businesses on Center Street in the 1890s which she knew from family records.
13. *Republican Gazette* newspaper, West Union, Ia., 1881.
14. *Elgin Echo* newspaper, Elgin, Ia, various dates.
15. Elgin Business Directory, showing the leading business houses, June 1874.

National Register of Historic Places Continuation Sheet

Section 10 Page 15

Elgin Block, Fayette County, Iowa

10. GEOGRAPHICAL DATA

UTM References

Verbal Boundary Description

Block 1, Lot 7 & 8, numbers 225, 227, 229, 231 on Center Street, Elgin, Iowa
Section 14, Pleasant Valley Township 941V, Range 7. Elgin, Iowa

Boundary Justification

These are the boundaries historically associated with the Elgin Block.

National Register of Historic Places Continuation Sheet

Section 10 Page 16

Elgin Block, Fayette County, Iowa

Additional Property owners:

Property Owner (227- 229)

name Jeff and Jannell Bradley
street & number 16378 Fox
telephone 563-426-5591
city Wadena State Iowa zipcode 52169

Property Owner (225)

name Francis Butikofer
street & number 301 Moore St.
telephone 563-426-5365
city Elgin state Iowa zipcode 52141

United States Department of the Interior
National Park Service

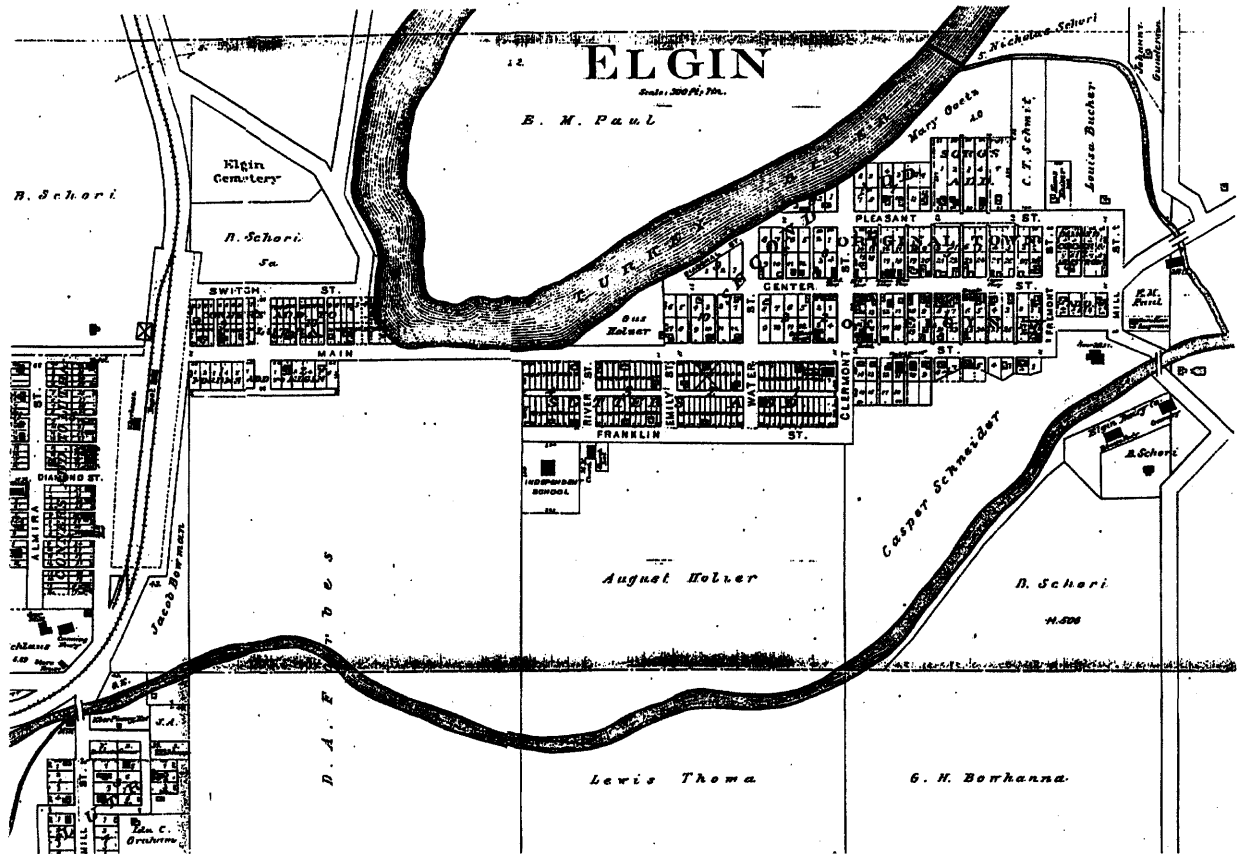
NATIONAL REGISTER OF HISTORIC PLACES CONTINUATION SHEET

Section number 10 Page 17

CFN-259-1116

Elgin Block, Fayette County, Iowa

Plat – Elgin 1896



Source: Plat Book of Fayette County

United States Department of the Interior
National Park Service

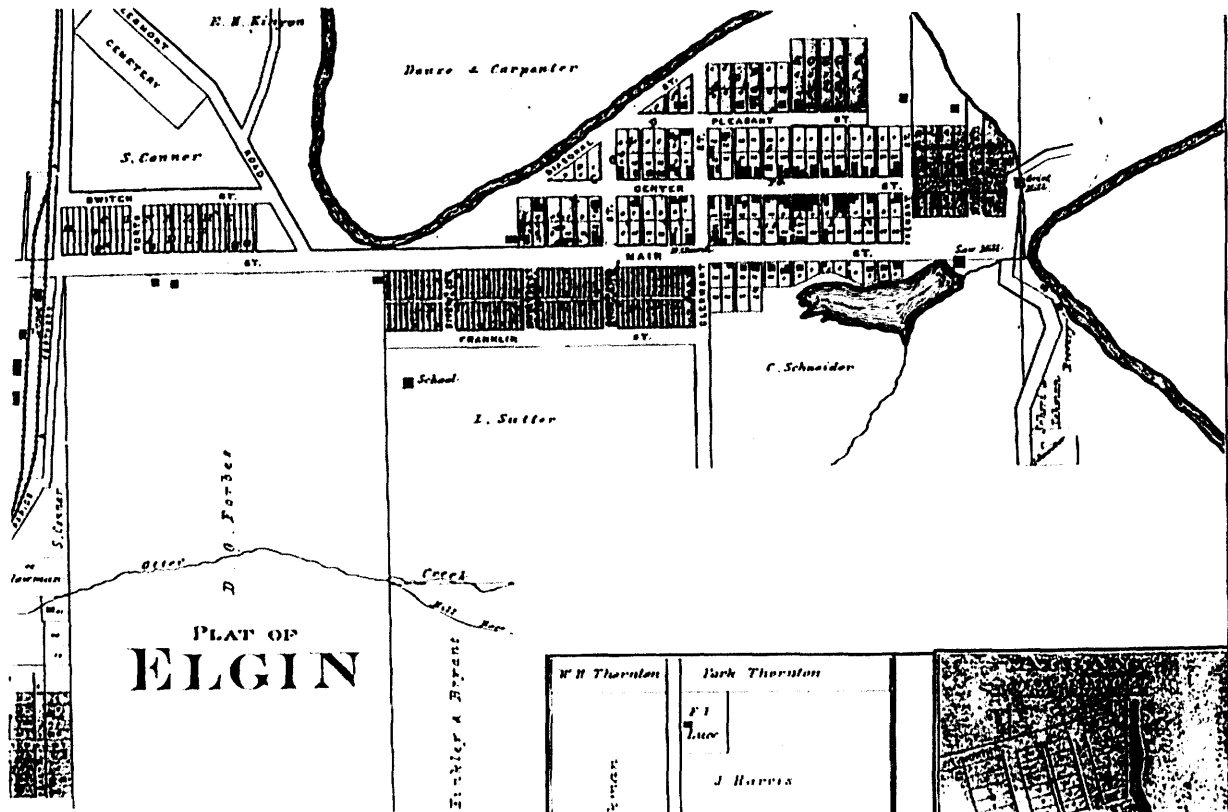
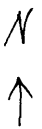
NATIONAL REGISTER OF HISTORIC PLACES CONTINUATION SHEET

Section number 10 Page 18

CFN-259-1116

Elgin Block, Fayette County, Iowa

Plat – Elgin 1879



Source: Plat Book of Fayette County

United States Department of the Interior
National Park Service

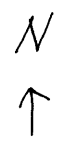
NATIONAL REGISTER OF HISTORIC PLACES CONTINUATION SHEET

Section number 10 Page 19

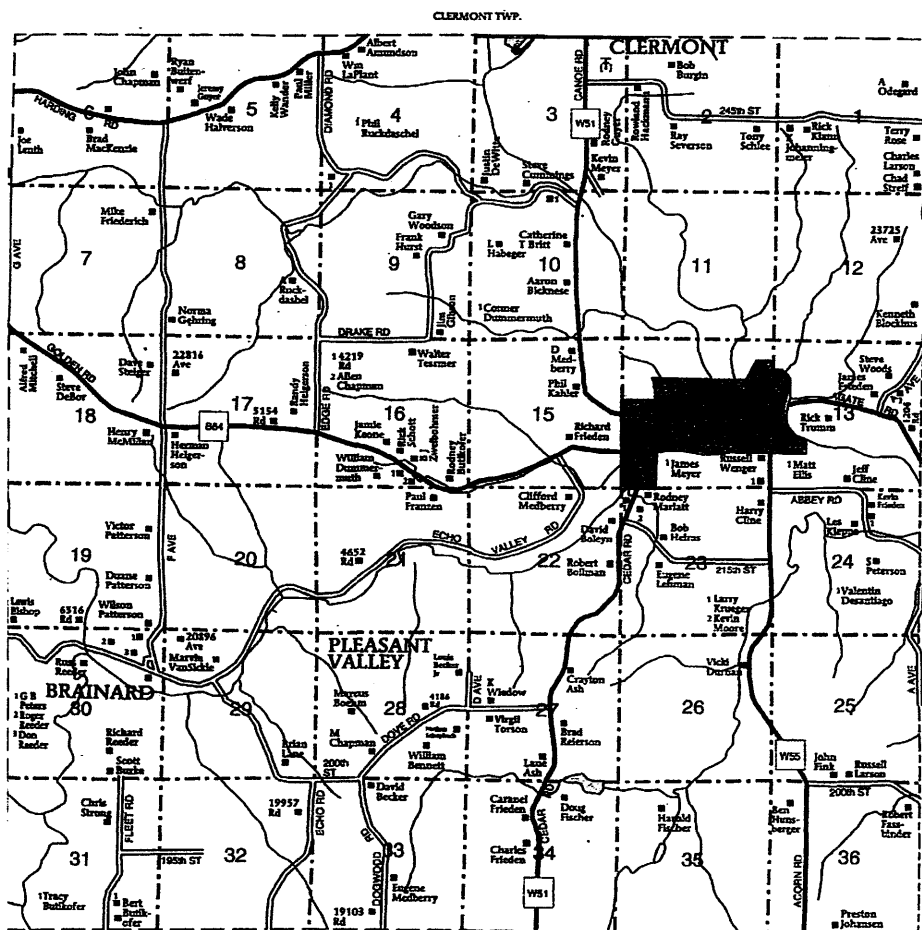
CFN-259-1116

Elgin Block, Fayette County, Iowa

Plat – Pleasant Valley Directory - 2005



94-N PLEASANT VALLEY DIRECTORY R-7-W
(Residents - Owners or Renters)



Source: Farm & Home Plat & Directory 2005

United States Department of the Interior
National Park Service

NATIONAL REGISTER OF HISTORIC PLACES CONTINUATION SHEET

Section number Photographs Page 20

CFN-259-1116

Photos on Epson Premium Luster Photo Paper with Epson UltraChrome pigmented inks

PHOTO LOG

1. **Elgin Block**
Fayette County, Iowa
Marilyn Schaer, Photographer
November 2005
North and west face of Block

2. **Elgin Block**
Fayette County, Iowa
Artist's Illustration, Elgin Historical Society
1875
North and west face of Block

3. **Elgin Block**
Fayette County, Iowa
Marilyn Schaer, Photographer
November 2005
West face of Block

4. **Elgin Block**
Fayette County, Iowa
Marilyn Schaer, Photographer
November 2005
South face of Block

5. **Elgin Block**
Fayette County, Iowa
Elgin Historical Society
1890- and 1931
Center Street facing east, Elgin Block on right

United States Department of the Interior
National Park Service

NATIONAL REGISTER OF HISTORIC PLACES CONTINUATION SHEET

Section number Photographs Page 21

CFN-259-1116

Photos on Epson Premium Luster Photo Paper with Epson UltraChrome pigmented inks

PHOTO LOG – continued

- 6. Elgin Block**
Fayette County, Iowa
Elgin Historical Society
1907
North face of Block, July 4 Parade
- 7. Elgin Block**
Fayette County, Iowa
Elgin Historical Society
Early 1900's
Center Street facing west, Elgin Block on left
- 8. Elgin Block**
Fayette County, Iowa
Marilyn Schaer, Photographer
December 2006
Center Street Museum Interior 1
- 9. Elgin Block**
Fayette County, Iowa
Marilyn Schaer, Photographer
December 2006
Center Street Museum Interior 2
- 10. Elgin Block**
Fayette County, Iowa
Marilyn Schaer, Photographer
December 2006
Center Street Museum Interior 3

United States Department of the Interior
National Park Service

NATIONAL REGISTER OF HISTORIC PLACES CONTINUATION SHEET

Section number Photographs Page 22
CFN-259-1116

Photos on Epson Premium Luster Photo Paper with Epson UltraChrome pigmented inks.

PHOTO LOG

- 11. Elgin Block**
Fayette County, Iowa
Marilyn Schaer, Photographer
February 2008
Pediments with brick trim

- 12. Elgin Block**
Fayette County, Iowa
Marilyn Schaer, Photographer
February 2008
Pediments with brick trim and window surround

- 13. Elgin Block**
Fayette County, Iowa
Elgin Historical Society
Circa World War I
Thoma Store, 231 Center Street