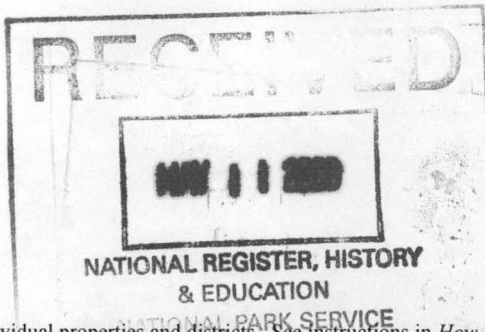


United States Department of the Interior
National Park Service

National Register of Historic Places
Registration Form



632

This form is for use in nominating or requesting determinations for individual properties and districts. See instructions in *How to Complete the National Register of Historic Places Registration Form* (National Register Bulletin 16A). Complete each item by marking "x" in the appropriate box or by entering the information requested. If an item does not apply to the property being documented, enter "N/A" for "not applicable." For functions, architectural classification, materials, and areas of significance, enter only categories and subcategories from the instructions. Place additional entries and narrative items on continuation sheets (NPS Form 10-900a). Use a typewriter, word processor, or computer, to complete all items.

1. Name of Property

historic name U.S. 62 Bridge over Crooked Creek

other names/site number MR0054

2. Location

street & number U.S. Highway 62

☐ not for publication

city or town Pyatt

☒ vicinity

state Arkansas code AR county Marion code 089 zip code 72672

3. State/Federal Agency Certification

As the designated authority under the National Historic Preservation Act, as amended, I hereby certify that this ☒ nomination ☐ request for determination of eligibility meets the documentation standards for registering properties in the National Register of Historic Places and meets the procedural and professional requirements set for in 36 CFR Part 60. In my opinion, the property ☒ meets ☐ does not meet the National Register criteria. I recommend that this property be considered significant ☐ nationally ☐ statewide ☒ locally. (See continuation sheet for additional comments.)

Carolyn H. Statu
Signature of certifying official/Title

4-27-9
Date

Arkansas Historic Preservation Program

State or Federal agency and bureau

In my opinion, the property ☐ meets ☐ does not meet the National Register criteria. (☐ See Continuation sheet for additional comments.)

Signature of certifying official/Title

Date

State or Federal agency and bureau

4. National Park Service Certification

I hereby certify that the property is:

☒ entered in the National Register.

☐ See continuation sheet

☐ determined eligible for the
National Register.

☐ See continuation sheet

☐ determined not eligible for the
National Register.

☐ removed from the National
Register.

☐ other, (explain:) _____

Edson H. Beall
Signature of the Keeper

6-9-00
Date of Action

U.S. 62 Bridge over Crooked Creek
Name of Property

Marion Co., Arkansas
County and State

5. Classification

Ownership of Property
(Check as many boxes as apply)

- ☐ private
☐ public-local
☒ public-State
☐ public-Federal

Category of Property
(Check only one box)

- ☐ building(s)
☐ district
☐ site
☐ structure
☐ object

Number of Resources within Property
(Do not include previously listed resources in count.)

Contributing

Noncontributing

	buildings
	sites
1	structures
	objects
1	Total
0	

Name of related multiple property listing
(Enter "N/A" if property is not part of a multiple property listing.)

Historic Bridges of Arkansas

**Number of Contributing resources previously listed
in the National Register**

N/A

6. Function or Use

Historic Functions

(Enter categories from instructions)

TRANSPORTATION: Road related (vehicular)

Current Functions

(Enter categories from instructions)

TRANSPORTATION: Road related (vehicular)

7. Description

Architectural Classification

(Enter categories from instructions)

OTHER: Warren truss with verticals, deck truss bridge

Materials

(Enter categories from instructions)

foundation Concrete

walls Steel

roof N/A

other N/A

Narrative Description

(Describe the historic and current condition of the property.)

SEE CONTINUATION SHEET.

United States Department of the Interior
National Park Service

National Register of Historic Places Continuation Sheet

Section number 7 Page 1

SUMMARY

Located on U.S. Highway 62 at the point where it crosses Crooked Creek, the U.S. Highway 62 Bridge is a steel Warren truss with verticals, deck truss bridge. This bridge is comprised of three sections and spans a total length of 471 feet. The U.S. 62 Bridge is being nominated to the National Register of Historic Places under Criterion C as a good example of a deck truss type of bridge and an intact example of a Warren truss with verticals.

ELABORATION

The structure, which is a steel, Warren truss with verticals, deck truss bridge, spans Crooked Creek. Because it is of deck truss construction, this bridge carries its traffic load level with the top chords. It consists of three spans, each measuring approximately 136 feet, with a total structure length of 471 feet. The travel surface is 26 feet wide with an overall width of 32 feet and the deck surface is concrete over the steel truss. The piers that support the bridge are made of concrete and the steel Warren truss, with verticals, runs the entire length of the north and south sides of the bridge. The Warren truss was designed to allow the diagonals to carry both compressive and tensile forces, with the verticals serving as bracing for the triangular web system. No structural alterations have been made to the bridge to alter its integrity.

Integrity

Its location remains rural, as its setting remains pristine; it exemplifies its original historic design and materials. No changes have been made to alter the historic workmanship or detract from its feeling or association as it is still used as a bridge for vehicular travel.

U.S. 62 Bridge over Crooked Creek

Name of Property

Marion Co., Arkansas

County and State

8. Statement of Significance

Applicable National Register Criteria

(Mark "x" in one or more boxes for the criteria qualifying the property for National Register listing.)

- ☐ **A** Property is associated with events that have made a significant contribution to the broad patterns of our history.
- ☐ **B** Property is associated with the lives of persons significant in our past.
- ☒ **C** Property embodies the distinctive characteristics of a type, period, or method of construction or represents the work of a master, or possesses high artistic values, or represents a significant and distinguishable entity whose components lack individual distinction.
- ☐ **D** Property has yielded, or is likely to yield, information important in prehistory or history.

Level of Significance (local, state, national)

LOCAL

Areas of Significance (Enter categories from instructions)

ENGINEERING

Period of Significance

1948-1950

Criteria Considerations

(Mark "x" in all the boxes that apply.)

Property is:

- ☐ **A** owned by a religious institution or used for religious purposes.
- ☐ **B** removed from its original location.
- ☐ **C** moved from its original location.
- ☐ **D** a cemetery.
- ☐ **E** a reconstructed building, object, or structure.
- ☐ **F** a commemorative property
- ☐ **G** less than 50 years of age or achieved significance within the past 50 years.

Significant Dates

1948

Significant Person (Complete if Criterion B is marked)

N/A

Cultural Affiliation (Complete if Criterion D is marked)

N/A

Architect/Builder

BUILDER: Pioneer Construction Company, Inc.

Narrative Statement of Significance

(Explain the significance of the property.)

SEE CONTINUATION SHEET.

United States Department of the Interior
National Park Service

National Register of Historic Places Continuation Sheet

Section number 8 Page 1

SUMMARY

Constructed in 1948, the U.S. 62 Bridge over Crooked Creek is being nominated to the National Register of Historic Places under Criterion C because it embodies the design characteristics of a Warren truss with verticals, deck truss bridge and is the best example of this design in the surrounding area. This bridge is significant in the area of engineering and is being submitted under the multiple property listing "Historic Bridges of Arkansas" and under the associated historic context "Post WWII Era."

ELABORATION

According to Allan Comp, Senior Historian and Donald Jackson, Civil Engineer (HAER), the Warren truss design dates back to the 1840s. During the late part of the nineteenth century different styles of trusses were developed but it was the Pratt and the Warren designs that gradually demonstrated their versatility, durability, and economic desirability. Because of the success of both bridge designs, nearly all bridge trusses in the twentieth century were constructed using variations of these forms; and so the U.S. 62 Bridge over the Crooked Creek is a Warren truss with verticals, deck truss bridge.

In July of 1946, a notice to contractors that proposals for constructing the U.S. 62 Bridge over Crooked Creek was placed in the *Arkansas Democrat*, *Arkansas Gazette*, and *The Construction News*. However, by February of 1947, only one company – the East Arkansas Construction Company – had submitted a bid for \$164,087.00. The State Highway Commission rejected this bid and once again began the process of searching for a contractor. Nearly a year later in January of 1948, the Pioneer Construction Company Inc. from Kansas City, Missouri, was awarded the job for building the U.S. 62 Bridge over Crooked Creek after submitting a bid for \$150,596.84. At the time of completion, the bridge was constructed for a total cost of \$153,627.30.

Significance

Because it is the best example of a Warren truss design in this area, the U.S. 62 Bridge is being nominated to the National Register of Historic Places with **local significance** under **Criterion C**. It is being submitted under the **multiple property listing** "Historic Bridges of Arkansas" in conjunction with the associated **historic context** "Post WWII Era."

9. Major Bibliographical References**Bibliography**

(Cite the books, articles, and other sources used in preparing this form.)

Apple, M. M. Memo 29 December 1947. Memo in possession of Arkansas Highway Department (Record Room – Job 9221)

Arkansas State Highway and Transportation Department (Environmental Division). *Arkansas Historic Bridge Review and Evaluation: Volume I (December 1987) and Volume II (April 1996)*. Little Rock, AR: no publisher.

Arkansas Highway Department. "OASIS INQUIRY – Bridge 02469." (database), 2000.

Arkansas Historic Preservation Program. "Bridges to the Past." (brochure), 1999.

Comp, Allan, and Donald Jackson. "Technical Leaflet 95: Bridge Truss Types: A Guide to Dating and Identifying." American Association for State and Local History, 1977.

Oliver, F.R. To Mr. J. G. Baker. 6 January 1948. Letter in possession of the Arkansas Highway Department (Record Room – Job 9221).

_____. To W.W. Lass. 13 February 1947. Letter in possession of the Arkansas Highway Department (Record Room – Job 9221).

Wayne, J. F. To F. R. Oliver. 8 July 1946. Letter in possession of the Arkansas Highway Department (Record Room – Job 9221).

Previous documentation on file (NPS):

- ☐ preliminary determination of individual listing (36 CFR 67) has been requested
- ☐ previously listed in the National Register
- ☐ Previously determined eligible by the National Register
- ☐ designated a National Historic Landmark
- ☐ recorded by Historic American Buildings Survey # _____
- ☐ recorded by Historic American Engineering Record # _____

Primary location of additional data:

- ☒ State Historic Preservation Office
- ☒ Other State Agency
- ☐ Federal Agency
- ☐ Local Government
- ☐ University
- ☐ Other

Name of repository: _____

10. Geographical Data

Acreage of Property Less than two acres

UTM References

(Place additional UTM references on a continuation sheet.)

1 15 514870 4011040
Zone Easting Northing

2 _____

3 _____
Zone Easting Northing

4 _____

☐ See continuation sheet

Verbal Boundary Description

(Describe the boundaries of the property.)

Section – 31, Township – 17W, Range 19N

Beginning at a point 30 feet southeast and 30 feet northeast of the east corner of the bridge proceed southwest approximately 92 feet crossing U.S. Highway 62 (at this point you will be approximately 30 feet southeast and 30 feet southwest from the south corner of the bridge). Turning northwest, proceed approximately 531 feet, running parallel to the southwest side of the bridge, while crossing Crooked Creek. Turning northeast proceed approximately 92 feet crossing U.S. Highway 62 to a point approximately 30 feet northwest and northeast of the north corner of the bridge. Turning southeast proceed approximately 531 feet, running parallel to the northeast side of the bridge, while crossing Crooked Creek and returning to the point of origin.

Boundary Justification

(Explain why the boundaries were selected.)

This boundary has been established to isolate the bridge, abutments, and piers, all of which are historically associated with this resource and maintain their integrity. Also included in the boundary is the immediate setting extending 30 feet southeast, southwest, northwest, and northeast of the body of the bridge.

11. Form Prepared By

name/title	Kara Mills, National Register/Survey Coordinator		
organization	Arkansas Historic Preservation Program	date	
street & number	1500 Tower Building, 323 Center Street	telephone	(501) 324-9880
city or town	Little Rock	state	AR zip code 72201

Paperwork Reduction Act Statement: This information is being collected for applications to the National Register of Historic Places to nominate properties for listing or determine eligibility for listing, to list properties, and to amend existing listing. Response to this request is required to obtain a benefit in accordance with the National Historic Preservation Act, as amended (16 U.S.C. 470 *et seq.*)

Estimated Burden Statement: Public reporting burden for this form is estimated to average 18.1 hours per response including time for reviewing instructions, gathering and maintaining data, and completing and reviewing the form. Direct comments regarding this burden estimate or any aspect of this form to the Chief, Administrative Services Division, National Park Service, P. O. Box 37127, Washington, DC 20013-7127; and the Office of Management and Budget, Paperwork Reductions Projects (1024-0018), Washington, DC 20303.

UNITED STATES DEPARTMENT OF THE INTERIOR
NATIONAL PARK SERVICE

NATIONAL REGISTER OF HISTORIC PLACES
EVALUATION/RETURN SHEET

REQUESTED ACTION: NOMINATION

PROPERTY US 62 Bridge over Crooked Creek
NAME:

MULTIPLE Historic Bridges of Arkansas MPS
NAME:

STATE & COUNTY: ARKANSAS, Marion

DATE RECEIVED: 5/11/00 DATE OF PENDING LIST: 5/24/00
DATE OF 16TH DAY: 6/09/00 DATE OF 45TH DAY: 6/25/00
DATE OF WEEKLY LIST:

REFERENCE NUMBER: 00000632

REASONS FOR REVIEW:

APPEAL: N DATA PROBLEM: N LANDSCAPE: N LESS THAN 50 YEARS: N
OTHER: N PDIL: N PERIOD: N PROGRAM UNAPPROVED: N
REQUEST: N SAMPLE: N SLR DRAFT: N NATIONAL: N

COMMENT WAIVER: N

☒ ACCEPT ☐ RETURN ☐ REJECT 6.9.00 DATE

ABSTRACT/SUMMARY COMMENTS:

RECOM./CRITERIA _____

REVIEWER _____ DISCIPLINE _____

TELEPHONE _____ DATE _____

DOCUMENTATION see attached comments Y/N see attached SLR Y/N



U.S. 62 Bridge over Crooked Creek

Marion Co., AR

Kara Mills

January 2000

AHPP

View of ^{top} deck of bridge looking
southeast



U.S. 62 Bridge over Crooked Creek

Marion Co, AR

Kara Mills

January 2000

AHPP

View of bridge looking north



US. 62 Bridge over Crooked Creek

Marior Co., AR

Kara Milks

January 2000

AHPP

View of bridge looking south

1-3

GROOKED CREEK

PIONEER CONSTRUCTION CO. INC.
CONTRACTOR

ARKANSAS

STATE HIGHWAY COMMISSION

FEDERAL WORKS AGENCY

PUBLIC ROADS ADMINISTRATION

1948

BRIDGE NO.

US 62 Bridge over Crooked Creek

Marion Co., AR

Kara Mills

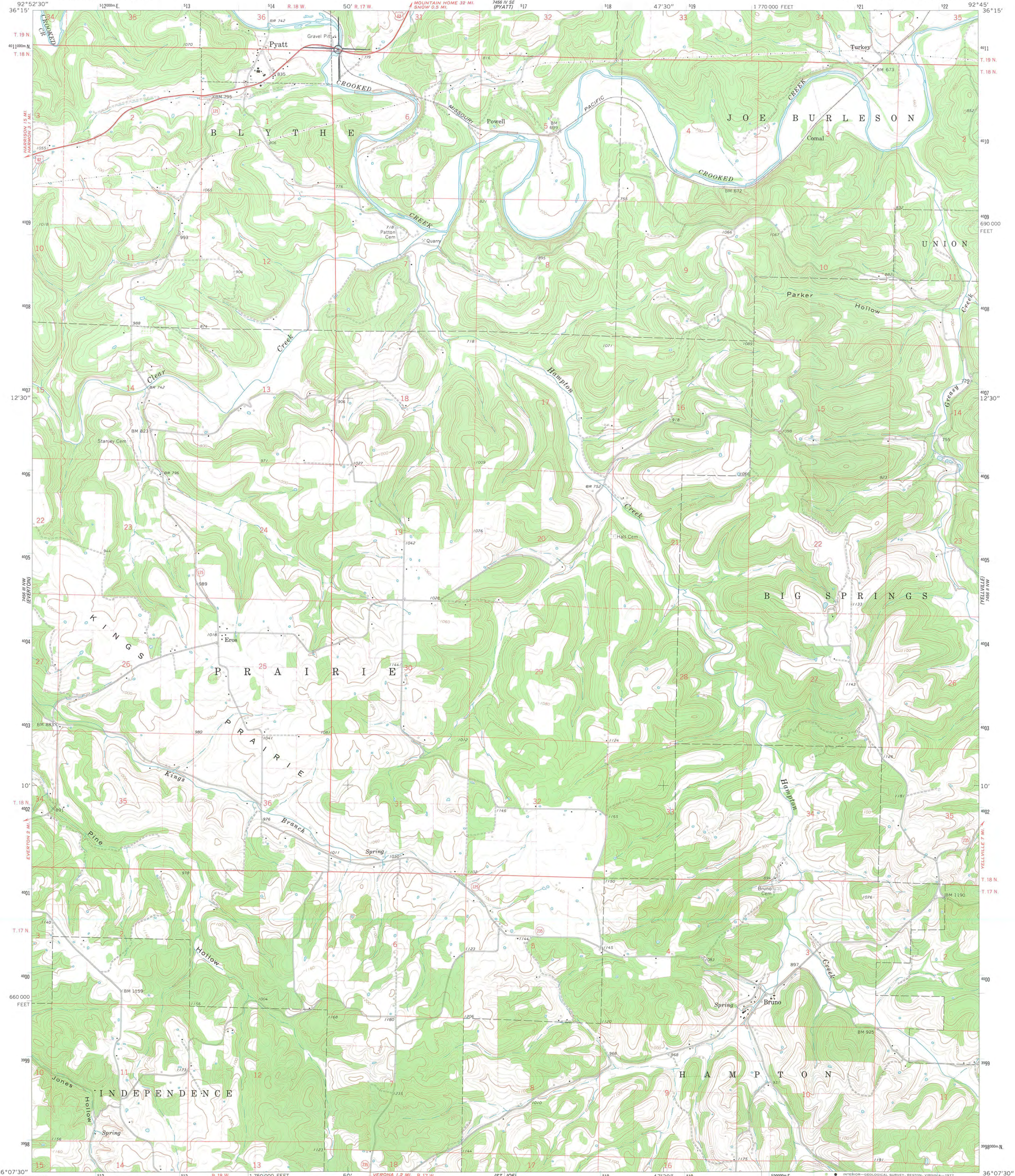
January 2000

AHPP

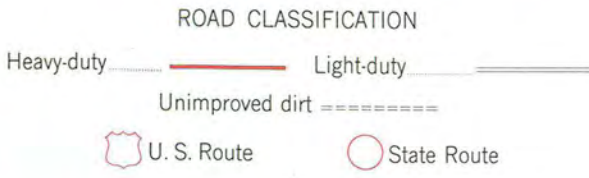
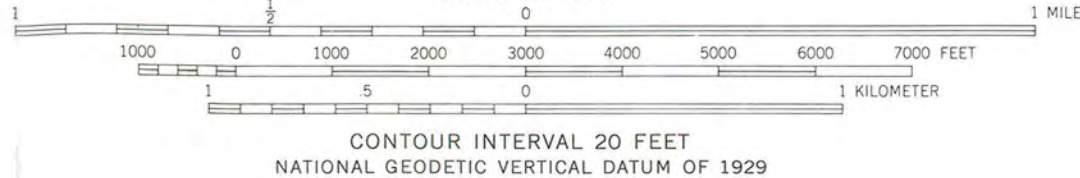
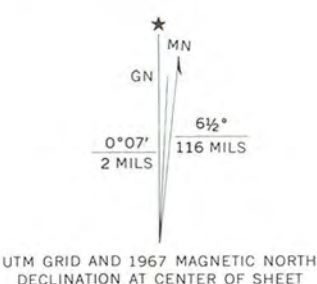
View of bridge plaque looking
north

U.S. 62 Bridge over Crooked Creek
Pyatt vic., Marion Co., AR
UTM References: 15/514870/4011040

7456 III NE
(COTTER SW)



Mapped, edited, and published by the Geological Survey
Control by USGS and USC&GS
Topography by photogrammetric methods from aerial
photographs taken 1964. Field checked 1967
Polyconic projection. 1927 North American datum
10,000-foot grid based on Arkansas coordinate system, north zone
1000-meter Universal Transverse Mercator grid ticks,
zone 15, shown in blue
Fine red dashed lines indicate selected fence and field lines where
generally visible on aerial photographs. This information is unchecked

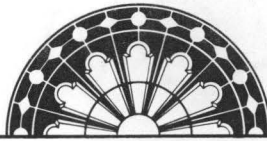


THIS MAP COMPLIES WITH NATIONAL MAP ACCURACY STANDARDS
FOR SALE BY U. S. GEOLOGICAL SURVEY, DENVER, COLORADO 80225, OR RESTON, VIRGINIA 22092
AND ARKANSAS GEOLOGICAL COMMISSION, LITTLE ROCK, ARKANSAS 72204
A FOLDER DESCRIBING TOPOGRAPHIC MAPS AND SYMBOLS IS AVAILABLE ON REQUEST

BRUNO, ARK.
N3607.5—W9245/7.5

1967

AMS 7456 III NE—SERIES V884



ARKANSAS
HISTORIC
PRESERVATION
PROGRAM

April 28, 2000

Carol D. Shull
Chief of Registration
United State Department of the Interior
National Register of Historic Places
National Park Service
800 North Capitol Street, Suite 250
Washington, D.C. 20002

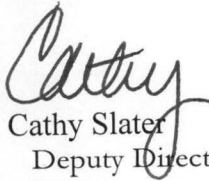
RE: U.S. 62 Bridge over Crooked Creek – Pyatt vic., Marion County

Dear Carol:

We are enclosing for your review the nomination of the above-referenced property. The Arkansas Historic Preservation Program has complied with all applicable nominating procedures and notification requirements in the nomination process.

Thank you for your consideration in this matter.

Sincerely,



Cathy Slater
Deputy Director, Heritage Resources
SHPO

CBS: km

Enclosures

