

U.S. SUBMARINE
VETERANS WW II
SCHOLARSHIP FUND
Thank you for your help

479-086

559

57%

479-086

558

1. USS Becuna
2. Philadelphia, Pa.
3. Jules Schick
4. 1985
5. Cruiser Olympia Association
6. Forward Torpedo Room
7. Photo #2

T



195

429-086

772

429-086

560

1. USS Becuna
2. Philadelphia, Pa.
3. Jules Schick
4. 1985
5. Cruiser Olympia Association
6. Officer's Wardroom
7. Photo #3

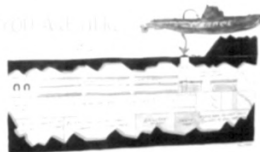
T

THE MOVIE PROJECTOR
WAS LOCATED HERE

CREW'S MESS

24 MEN COULD BE FED
AT 1 SITTING

Watch
your
STEP



479-086

577

479-086

1. USS Becuna
2. Philadelphia, Pa.
3. Jules Schick
4. 1985
5. Cruiser Olympia Association
6. Crew's Mess
7. Photo #4

T

563

562



565

479-086

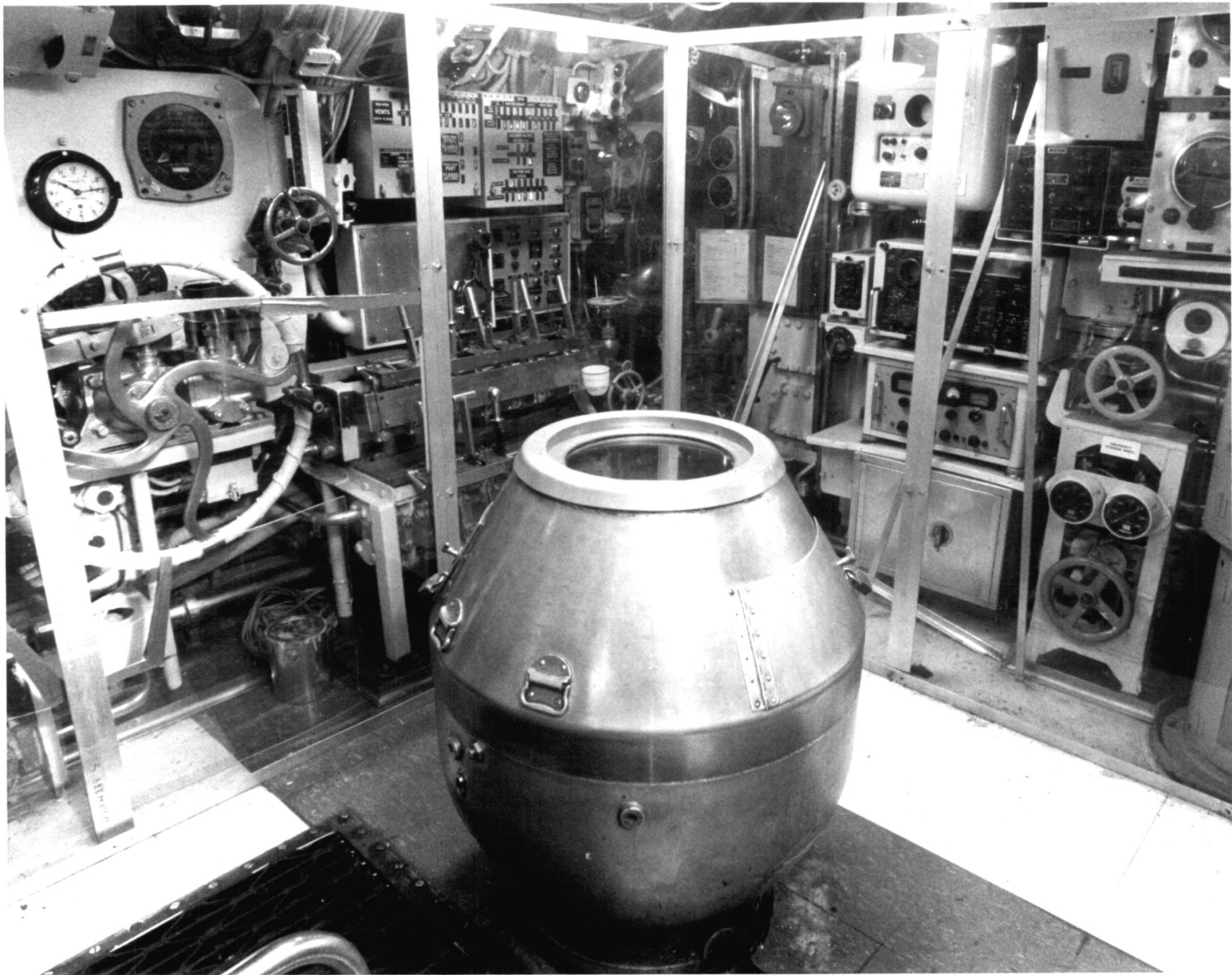
177

479-086

564

1. USS Becuna
2. Philadelphia, Pa.
3. Jules Schick
4. 1985
5. Cruiser Olympia Association
6. Galley
7. Photo #5

T



567

980-086
479-086

276

566

479-086

1. USS Becuna
2. Philadelphia, Pa.
3. Jules Schick
4. 1985
5. Cruiser Olympia Association
6. Control Room
7. Photo #6

T



479-086

569

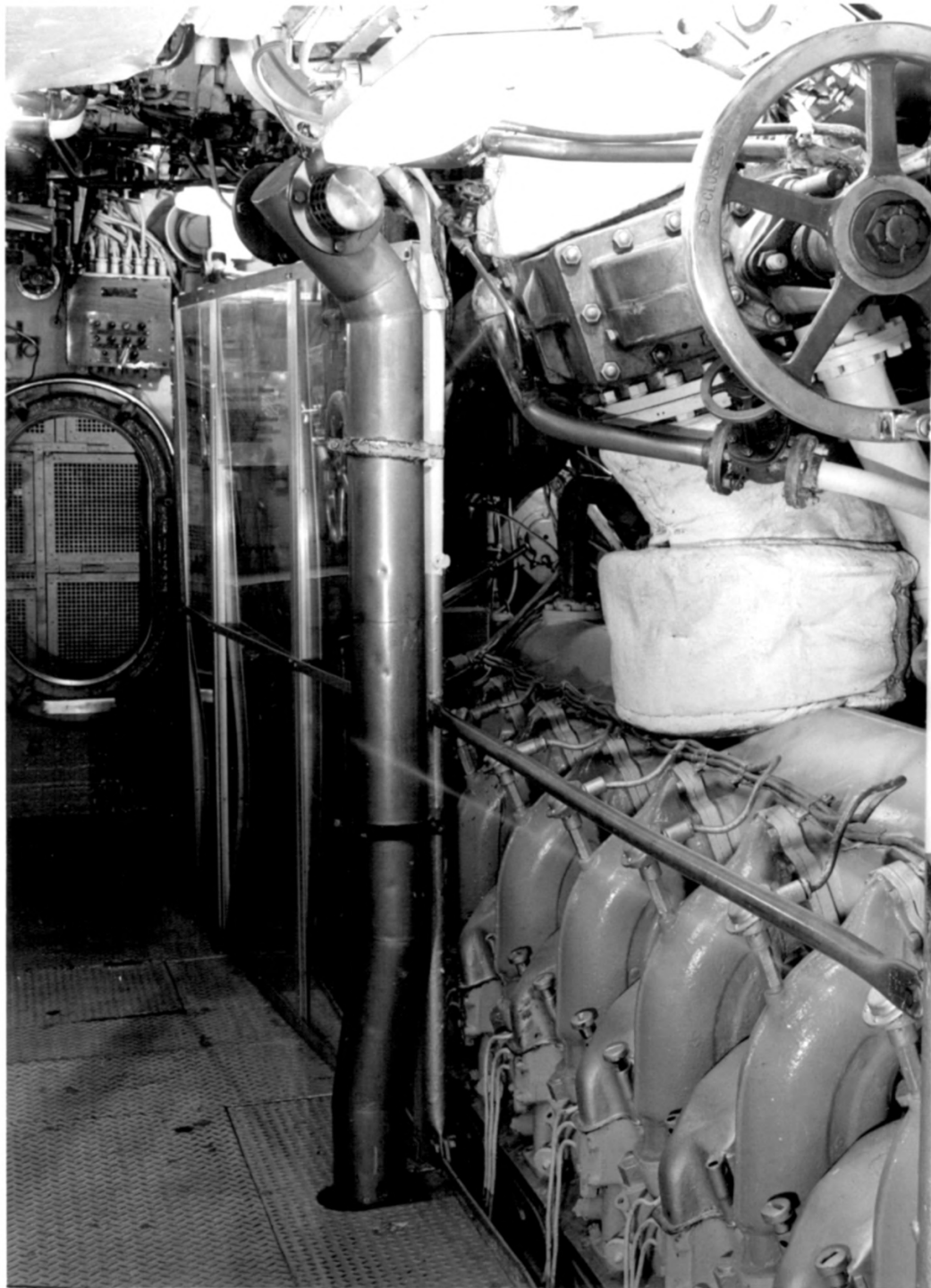
87%

479-086

568

1. USS Becuna
2. Philadelphia, Pa.
3. Jules Schick
4. 1985
5. Cruiser Olympia Association
6. Crew's Berthing Area
7. Photo #7

T



479-086

571

87%

479-086

570

1. USS Becuna
2. Philadelphia, Pa.
3. Jules Schick
4. 1985
5. Cruiser Olympia Association
6. Engine Room
7. Photo #8

T



479-086

573

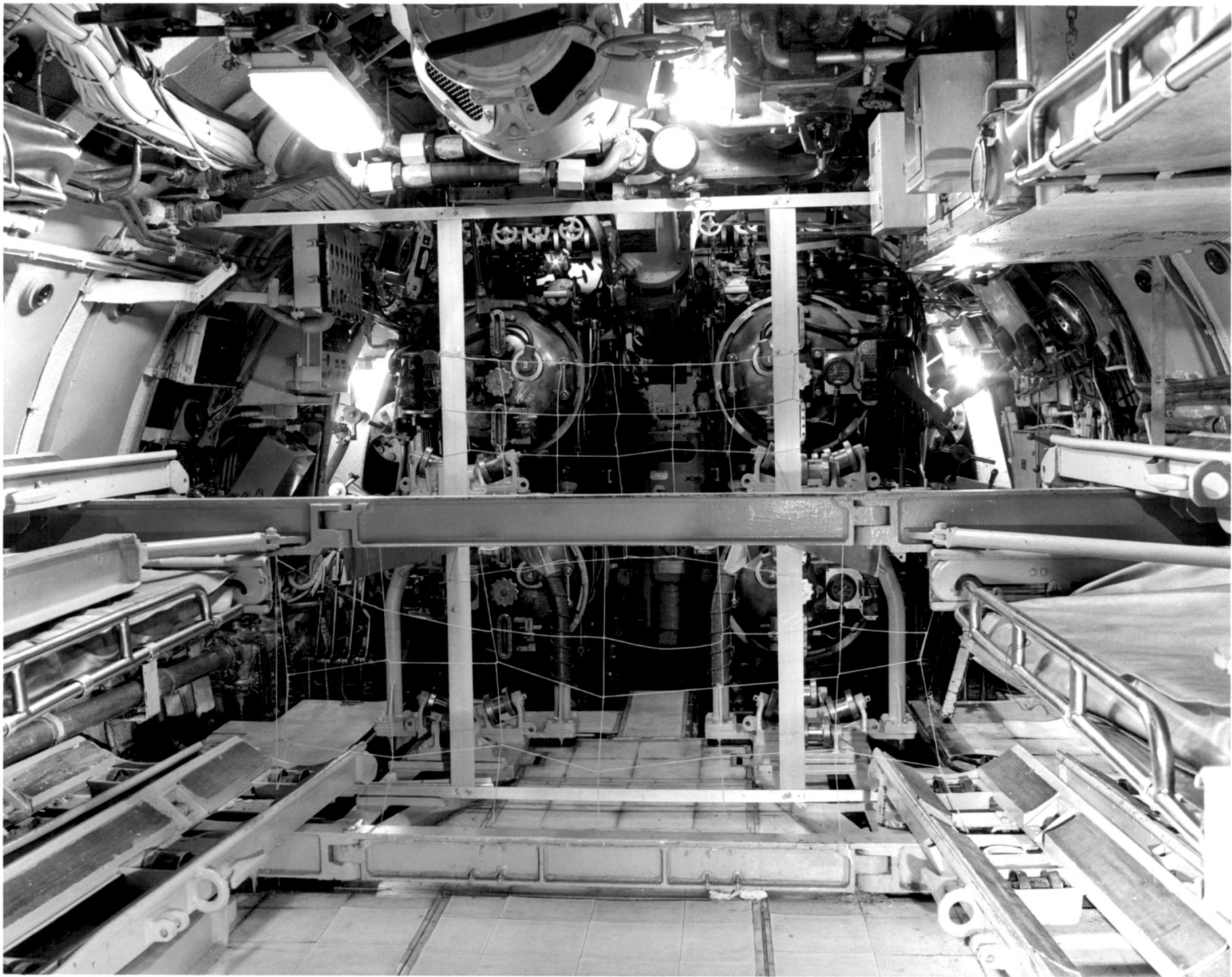
Handwritten mark

479-086

572

1. USS Becuna
2. Philadelphia, Pa.
3. Jules Schick
4. 1985
5. Cruiser Olympia Association
6. Maneuvering Room
7. Photo #9

T



479-086

575

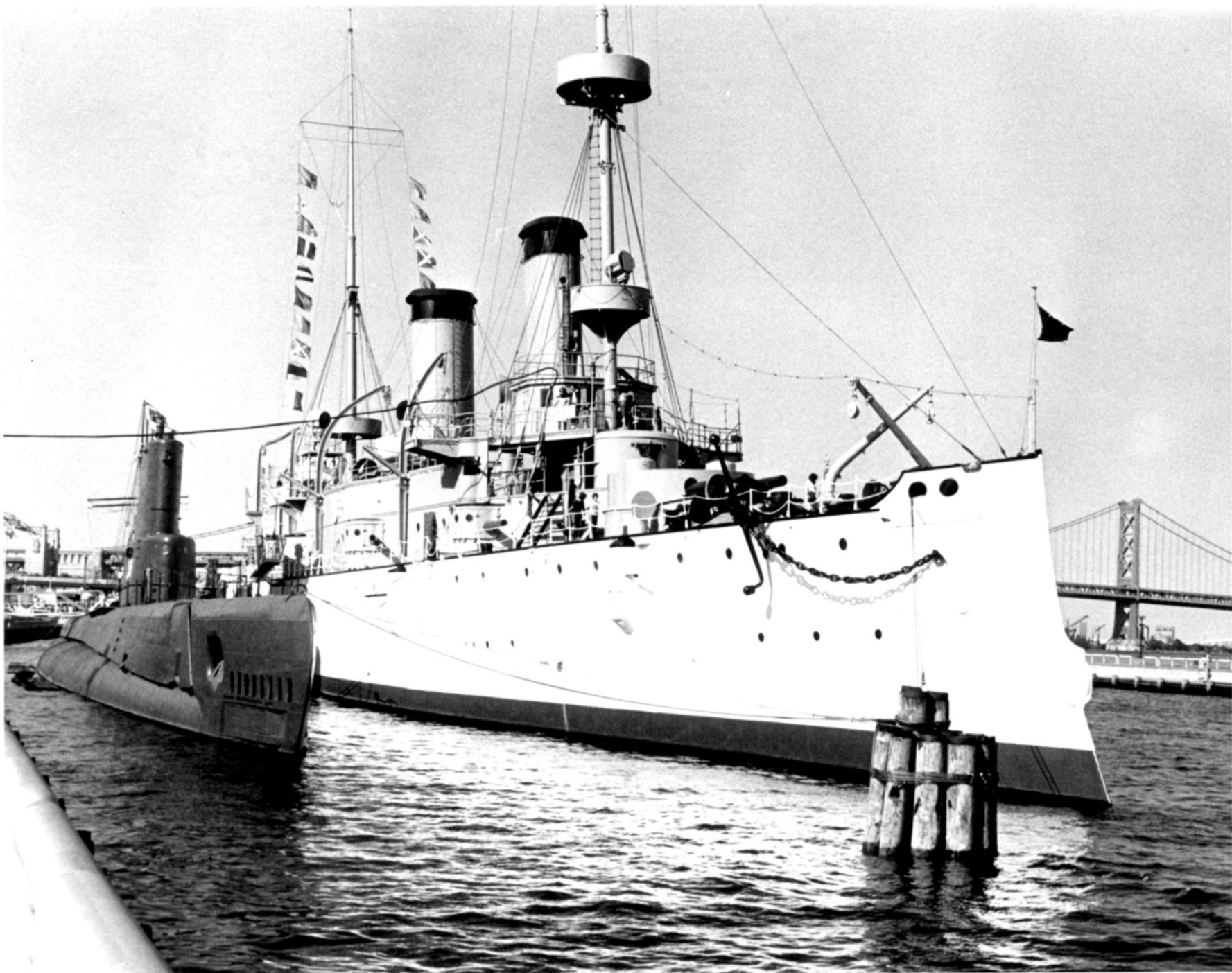
168

479-086

574

1. USS Becuna
2. Philadelphia, Pa.
3. Jules Schick
4. 1985
5. ~~Cruser~~ Olympia Association
6. Aft Torpedo Room
7. Photo #10

T



980-624

(577)

578BLANK

576

479-086

(576)

1. USS Becuna
2. Philadelphia, Pa.
3. Jules Schick
4. 1985
5. Cruiser Olympia Association
6. Exterior View-Forward
7. Photo # 011

T