



BOOMTOWN

M-164

734 thru 752 W King St

by Tony Wrenn

NOV 1 1979
August 1978

8048



BOOMTOWN

M-164

NOV 1 1979

653 Winchester Ave

by Tony Wrenn

August 1978

0990



BOOMTOWN

M-164
NOV

AUG
1 1978

653 Winchester Ave

by Tony Wrenn

August 1978

0990



AD 164 BROOMTOWN HIS 1210

4125 RALEIGH ST

by Tony Warren August 1978

98588



MILK BOON TOWN
HIS DIS
CRAWFORD WOOLEN MILL

By Tony Warren August 1978

959B



XA 164 BOONTOWN
HISTORIC DIST

Crawford Cashmere Mill
by Tony Wrenn August 1978

959B



M 164 BOONATOWN
HIS DIS

CRAWFORD WOOLEN MILL

by Tony Warren August 1978

9598



BOOMTOWN

M-164

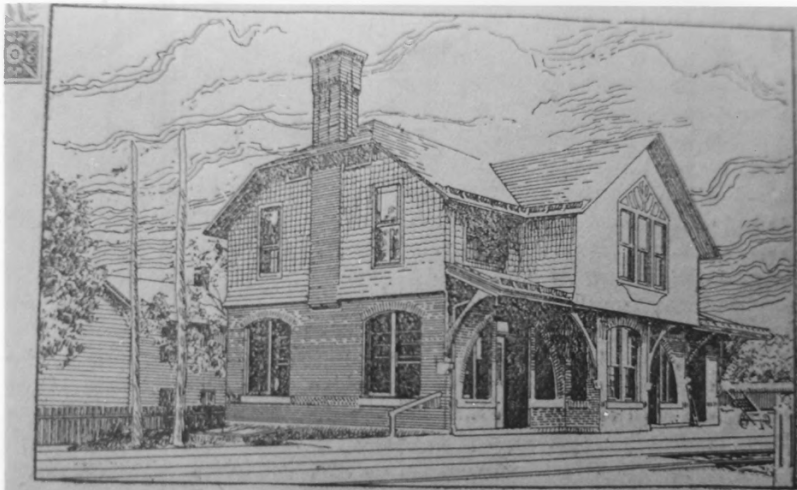
535 W King St
(CVRR Station)

NOV 1 1979

by Tony Wrenn

August 1978

0508



C. V. & M. RAILROAD DEPOT.

[From a Photograph by C. C. Bennet, Martinsburg.]

BOOMTOWN

M-164

535 W King St
(CVRR Station)

NOV 1 1979

by Tony Wrenn

August 1978

0152



BOOMTOWN

M-164

1007 W King St

NOV 1 1979

by Tony Wrenn

August 1978

0058



BOOMTOWN.

M-164

1025 W. King St

by Tony Wrenn

NOV
August 1978 1 1979

804B



BOOMTOWN

M-164

209 Porter Ave

NOV 1 1979

by Tony Wrenn

August 1978

0670



BOOMTOWN

M-164

Power Station/Generators
(along Porter Ave)

NOV 1 1979

by Tony Wrenn

August 1978

NOTE: Four levels of multipaned
sash, panelled and corbeled
brickwork and smokestack.

es. Allen



NOV 1 1979

BOOMTOWN

M-164

American Horticultural Distributor
(Miller Avenue)

by Emory Kemp

August 1978



BOOMTOWN

M-164

1300 W King St

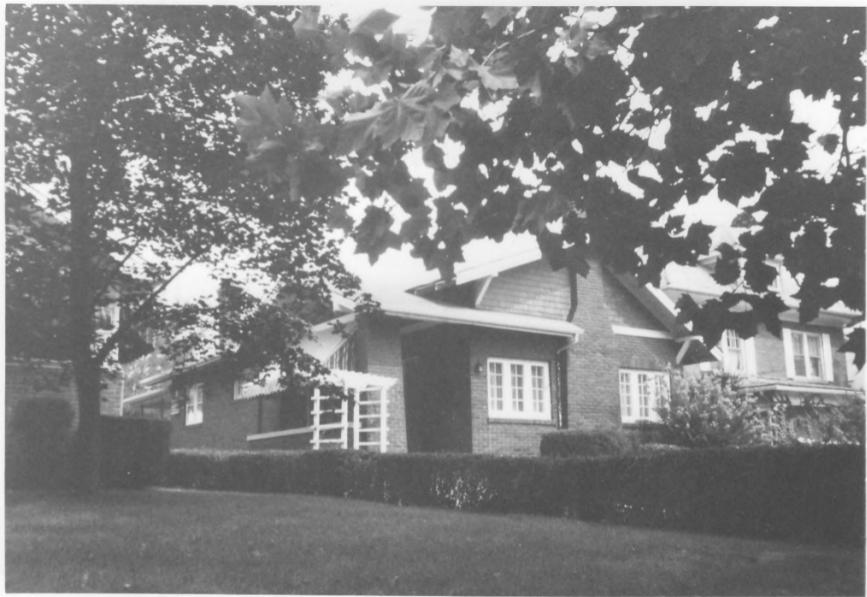
NOV

1 1979

by Tony Wrenn

August 1978

804B



BOOMTOWN

M-164

1218 W King St

NOV

1 1979

by Tony Wrenn

August 1978

8 0 4 B



BOOMTOWN

M-164

1201 W King St

NOV 1 1979

by Tony Wrenn

August 1978

8048



BOOMTOWN

M-164

1123 W King St

NOV 1 1979

by Tony Wrenn

August 1978

8048



BOOMTOWN

M-164

1101 W King St

NOV 1 1979

by Tony Wrenn

August 1978

804B



BOOMTOWN

M-164

816 W King St (Commanding View)

-side:south

NOV 1 1979

by Tony Wrenn

August 1978

804B



BOOMTOWN

M-164

815 W King St

by Tony Wrenn

August 1978

NOV

1 1979

8048



BOOMTOWN

M-164

805 W King St

NOV

1 1978

by Tony Wrenn

August 1978

804B



BOOMTOWN

M-164

721 W King St

NOV 1 1979

by Tony Wrenn

August 1978

804B



BOOMTOWN

M-164

719 W King St

by Tony Wrenn

NOV 1 1978
August 1978

8 0 4 B



BOOMTOWN

M-164

717 W King St

by Tony Wrenn

NOV 1 1970
August 1978

8048



BOOMTOWN

M-164

703-705 W King St

NOV

1 1979

by Tony Wrenn

August 1978

8040



BOOMTOWN

NOV-164
1 1979

709-711 W. King St

by Tony Wrenn

August 1978

8 0 4 B



BOOMTOWN

M-164

604 W. King

NOV

1 1979

by Tony Wrenn

August 1978

NOTE: Closed pediment portico with
paired posts, neck moldings &
stepped capitals; sidelights
over panels and full transom.



BOOMTOWN

NOV 1 1979-164

516-520 W King St

by Tony Wrenn

August 1978

8
0
5
8

THIS PAPER
MANUFACTURED
BY KODAK

THIS PAPER
MANUFACTURED
BY KODAK

THIS PAPER
MANUFACTURED
BY KODAK

THIS PAPER
MANUFACTURED
BY KODAK

THIS PAPER
MANUFACTURED
BY KODAK



BOOMTOWN

M-164

738-740 W John St

NOV 1 1979

by Tony Wrenn

August 1978

0670

W. John



BOOMTOWN

M-164

NGV 1 1979

729 W John St

by Tony Wrenn

August 1978

067B

789 W. John



BOOMTOWN

NOV 1 1978-164

706 W John St

by Tony Wrenn

August 1978

NOTE: Shingled second level with
box bay to left front.

Pent, at base of second
story windows, supported on
large plain brackets.

Above the second story win-
dow is a gabled hood with
lancet arched soffit, support-
ed on large plain brackets.



1498

NOV 1 1979

BOOMTOWN

M-164

Kilbourne Knitting Machine Co

by Tony Wrenn

August 1978



BOOMTOWN

M-164

Intersection of West Virginia Av
and Faulkner Ave-looking northeast

by Don C Wood

June 1979

NOV 1 1979

5398



NOV 1 1979

BOOMTOWN

M-164

Kilbourne Knitting Machine Co
(West John St & CVRR)

by Emory Kemp

August 1978



BOOMTOWN

M-164

400 block of Faulkner Ave
(looking northwest from the inter-
section of W South St-west side)

by Don C Wood

June 1979

NOV 1 1979

NOTE: 431-433 Faulkner Ave is the
brick structure (one window
and white porch railing is
showing) on the far left.



BOOMTOWN

M-164

400 block of Faulkner Ave
(looking north from the 2nd Ave
intersection-western side)

by Don C Wood

June 1979

NOV 1 1979

NOTE: 431-433 Faulkner Ave is the
dark two-story structure on
the far right.



BOOMTOWN

M-164

400 block of Faulkner Ave
(looking north from the 2nd Ave
intersection-eastern side)

by Don C Wood

June 1979

NOV 1 1979

5398



BOOMTOWN

M-164

400 block of Faulkner Ave
(looking north from the 2nd Ave
intersection-western side

by Don C Wood

June 1979

NOV 1 1979

539B



BOOMTOWN

M-164

400 block of Faulkner Ave
(looking west from the intersection
of W South Street-western side)
by Don C Wood June 1979

NOV 1 1979

NOTE: 435 Faulkner Ave is the two-
story, white frame house on
the far right; 431-433 is
barely visible on the margin.



BOOMTOWN

M-164

Garages along
Shenandoah Place

NOV 1 1979

by Tony Wrenn

August 1978

0901

W. John



BOOMTOWN

M-164

Shenandoah Pants Co

NOV 1 1979

by Tony Wrenn

August 1978

0 9 0 1

W. John of CURR
Trucks



WORKS OF THE SHENANDOAH PANTS COMPANY.

about 1000 yards of cloth were made

BOOMTOWN

M-164

Sheandoah Pants Co
(from an old print)

NOV 1 1979

by Tony Wrenn

August 1978

7538

W. John at CORR tables



M164 BOIM TOWN

HIS DIS

CRAWFORD WOOLEN MILL

by Tony Wren August 1978

NOTE: Indicative of early construction; stone first level and paneled brick second level.



BOON TOWN MARTINSBURG
HISTORIC DISTRICT.
310-312 S. RALEIGH ST.

MILK NOV 1980 FRANCES RUTH

5018



POOM TOWN MARTINSBURG
HISTORIC DISTRICT
304-306 S. RALEIGH St.

M16 4 NOV 1980 FRANCES RUTH

5018



BOOMTOWN

M-164

1020 Winchester Ave

NOV 1 1979

by Tony Wrenn

August 1978

8941



BOOMTOWN

M-164

NOV 1 1979

904 Winchester Ave

by Tony Wrenn

August 1978

0961



BOOMTOWN

M-164

823 Winchester Ave NOV 1 1979

by Tony Wrenn

August 1978

0961



BOOMTOWN

M-164

807 Winchester Ave **NOV** 1 1979

by Tony Wrenn

August 1978

1
4
6
8

THIS PAPER
MANUFACTURED
BY KODAK

THIS PAPER
MANUFACTURED
BY KODAK

THIS PAPER
MANUFACTURED
BY KODAK

THIS PAPER
MANUFACTURED
BY KODAK



BOOMTOWN

NOV 14 1979
M-164

806 Winchester Ave

by Tony Wrenn

August 1978

1468



BOOMTOWN

M-164

750 Winchester Avenue

NOV 1 1979

(Wellers° Tavern)

by Tony Wrenn

August 1978

NOTE: Porch ceiling coffered with
patterned tin and hanging
chain fixture.



BOOMTOWN

NOV 1-1979

750 Winchester Avenue
(Wellers^o Tavern)

by Tony Wrenn

August 1978

NOTE: Patent stone post on patent
stone pedestal, each with
concrete capping. Cast elec-
tric fixtures survive.

WINCHESTER AVE

THIS PAPER
MANUFACTURED
BY KODAK

THIS PAPER
MANUFACTURED
BY KODAK

PAPER
TURED

PAPER
TURED



NOTE: Surviving lamp fixture to
side of ceiling.

by Tony Wrenn August 1978

750 Winchester Avenue (Wellers' Tavern)
NOV 1979

M-164

BOOMTOWN



BOOMTOWN

M-164
NOV 1 1979

750 Winchester Avenue
(Wellers? Tavern)

by Tony Wrenn

August 1978

Ave

0941



BOOMTOWN

M-164

NOV 1 1979
750 Winchester Avenue
(Wellers' Tavern)

by Tony Wrenn

August 1978

1468



BOOMTOWN

M-164

NOV 1 1979

750 Winchester Avenue
(Wellers' Tavern)

by Tony Wrenn

August 1978

NOTE: Gambrel roofed patent stone
house (right) on Berry St.



BOOMTOWN

M-164

NOV 1 1979

747 Winchester Ave

by Tony Wrenn

August 1978

0941



BOOMTOWN

M-164

733-733 $\frac{1}{2}$ -735 Winchester Ave

NOV 1 1979

by Tony Wrenn

August 1978

1
A
C
D

THIS PAPER
MANUFACTURED
BY KODAK

THIS PAPER
MANUFACTURED
BY KODAK

THIS PAPER
MANUFACTURED
BY KODAK

THIS PAPER
MANUFACTURED
BY KODAK

THIS PAPER
MANUFACTURED
BY KODAK

THIS PAPER
MANUFACTURED
BY KODAK



BOOMTOWN

NOV^{M-164} 1 1979

711 Winchester Ave

by Tony Wrenn

August 1978

1
A
S
B

THIS PAPER
MANUFACTURED
BY KODAK

THIS PAPER
MANUFACTURED
BY KODAK

THIS PAPER
MANUFACTURED
BY KODAK

THIS PAPER
MANUFACTURED
BY KODAK



BOOMTOWN

M-164

606 Winchester Ave NOV 1 1979

by Tony Wrenn

August 1978

0
9
9
9

THIS PAPER
MANUFACTURED
BY KODAK

THIS PAPER
MANUFACTURED
BY KODAK

THIS PAPER
MANUFACTURED
BY KODAK

THIS PAPER
MANUFACTURED
BY KODAK

THIS PAPER
MANUFACTURED
BY KODAK

THIS PAPER
MANUFACTURED
BY KODAK



BOOMTOWN

NOV M-164
I 1978

500 Winchester Ave (left)

504-506 Winchester Ave (right)

by Tony Wrenn

August 1978

0
8 9 9 0



BOOMTOWN

NOV 1 1979 M-164

442 Winchester Ave

by Tony Wrenn

August 1978

0690

THIS PAPER
MANUFACTURED
BY KODAK

THIS PAPER
MANUFACTURED
BY KODAK

THIS PAPER
MANUFACTURED
BY KODAK

THIS PAPER
MANUFACTURED
BY KODAK



BOOMTOWN

NOV M-164 KE

436-438 Winchester Ave 1 1979

by Tony Wrenn

August 1978

8990



BOOMTOWN

NOV M-164
1 1979

423 Winchester Ave

by Tony Wrenn

August 1978

0
6
0
B

THIS PAPER MANUFACTURED BY KODAK



BOOMTOWN

NOV 1 M-164
1979

419 Winchester Ave

by Tony Wrenn

August 1978

NOTE: Corner hood with shallow half mansard roof; corner stick brackets with turned spindle fill and sawn canopy course & turned pendants.



BOOMTOWN

M-164

330 Winchester Ave

by Tony Wrenn

August 1978

NOV 1 1979

NOTE: Brick $1\frac{1}{2}$ story, gable roofed
outbuilding with interior
end chimney. Appears to be
older than the house.



BOOMTOWN

M-164

902

330 Winchester Ave

NOV 1 1979

by Tony Wrenn

August 1978

067B



BOOMTOWN

M-164

ER AVE

218 Winchester Ave

NOV

by Tony Wrenn

August 1978

1 1979

067B



FREE PARKING
BOOTH'S BICYCLE
CUSTOMERS
←

BOOMTOWN

M-164

NOV

1 1979

210 Winchester Ave

by Tony Wrenn

August 1978

067B



BOOMTOWN

NOV 16 1979

AVE

ARCO Gasoline Station
(Winchester at Wilson)

by Tony Wrenn

August 1978

8941



BOOMTOWN

M-164

500 block of Virginia Ave
(looking northwest from intersec-
tion with W Addition Street)

by Don C Wood

June 1979

NOV 1 1979

NOTE: 523 Virginia Ave is obscured
by the trees on the far-left.



BOOMTOWN

M-164

500 block of Virginia Ave
(looking south from near intersec-
tion of W South St-eastern side)

by Don C Wood

June 1979

NOV 1 1979

NOTE: 514 Virginia Ave is the 5th
house from the left; gable
ornament that is full from
returns to peak is visible.

5



BOOMTOWN

M-164

400 block of Virginia Ave
(looking east from mid-block of
W South Street-eastern side)

by Don C Wood

June 1979

NOV 1 1979

5398



BOOMTOWN

M-164

400 block of Virginia Ave
(looking south from mid-block;
eastern side-W South St crosses
near trees at right)

NOV 1 1979

by Don C Wood

June 1979

NOTE: 422 Virginia Ave is the 2nd
house from the left; 424 is
the 3rd-behind picket fence.

5408



BOOMTOWN

M-164

400 block of Virginia Ave
(looking south from mid-block;
eastern side-W South St crosses
near trees at right) NOV 1 1979

by Don C Wood

June 1979

NOTE: 422 Virginia Ave is the 4th
house from the left; 424 is
the 5th one.

5408



501B

Broomtown Martinsburg
Historic District
531 S. Raleigh St.
M164 Nov 1950 FRANCES RUTH



5018

Downtown Martinsburg
Historic District
531 S. RALEIGH ST.
M164 NOV 1980
Frances Ruth



5018

Boomtown Martindale
Historic District
505-507 S. Raleigh
M 164 Nov 1980. Frances Ruth



501B

BOWNTOWN MARTINSBURG
Historic District
501 S. RALEIGH
M164 NOV 1-980
FRANCES RUTH



5018
Downtown Martinsburg.
Historic District
501 S. Raleigh
M 164 Nov 1980
Frances Ruth



5018

Brown town MARTINSBURG
Historic District
413 S. RALEIGH
M164 Nov 1980 FRANCES RUTH



Downtown Martinsburg
Historic District
412 S. Raleigh
7/16th Nov 1980
Bronna Rath



5010

Broomtown Martinsburg

Historic District

112 S. Raleigh FRANCES

11/16/80 Nov 1980

Ruth



Downtown Martinsburg
Historic District
410 S. Raleigh St.
MA 168 Nov 1980 Mamma Ruth



5018

Downtown MARTINSBURG Historic
District 410 S. RALEIGH ST
M 16 1/2 Nov 1980 Frances
Ruth



BOOM TOWN MARTINSBURG
HISTORIC DISTRICT
327 S. RALEIGH ST
DETAIL OF PORCH

m164 NOV 1980 FRANCES RUTH

5018



BOOMTOWN MARTINSBURG
HISTORIC DISTRICT
327 S. RALEIGH ST.

M 12^H NOV 1990 FRANCES RUTH

5018



DOOW TOWN. MARTINSBURG
HISTORIC DISTRICT
314-316 S. RALEIGH ST

M164 NOV 1980 FRANCOS RUTH

5018



5010

BOWEN TOWN MARTINSBURG
HISTORIC DISTRICT

314 S. RALEIGH ST

316

M164 NOV 1980

FRANCES RUTH.



POW M TOWN MARTINSBURG
HISTORIC DISTRICT.
311-313 S. RALEIGH ST

M164 NOV 1980 FRANCES RUTH

5018