

608



United States Department of the Interior
National Park Service

National Register of Historic Places Registration Form

This form is for use in nominating or requesting determinations for individual properties and districts. See instructions in National Register Bulletin, *How to Complete the National Register of Historic Places Registration Form*. If any item does not apply to the property being documented, enter "N/A" for "not applicable." For functions, architectural classification, materials, and areas of significance, enter only categories and subcategories from the instructions. Place additional certification comments, entries, and narrative items on continuation sheets if needed (NPS Form 10-900a).

1. Name of Property

historic name Hotel Holly/Haswell Hotel
other names/site number 5KW.33

2. Location

street & number 200 4th Street (State Highway 96 and Main Street, southeast corner)

N/A	not for publication
N/A	vicinity

city or town Haswell
state Colorado code CO county Kiowa code 061 zip code 81045

3. State/Federal Agency Certification

As the designated authority under the National Historic Preservation Act, as amended,
 I hereby certify that this nomination ___ request for determination of eligibility meets the documentation standards for registering properties in the National Register of Historic Places and meets the procedural and professional requirements set forth in 36 CFR Part 60.

In my opinion, the property meets ___ does not meet the National Register Criteria. I recommend that this property be considered significant at the following level(s) of significance:
 national statewide local

[Signature] Deputy State Historic Preservation Officer 6/18/13 Date
 Signature of certifying official/Title
 Office of Archaeology and Historic Preservation, History Colorado
 State or Federal agency/bureau or Tribal Government

In my opinion, the property ___ meets ___ does not meet the National Register criteria.

Signature of commenting official _____ Date _____
 Title _____ State or Federal agency/bureau or Tribal Government _____

4. National Park Service Certification

I hereby certify that this property is:

entered in the National Register determined eligible for the National Register
 determined not eligible for the National Register removed from the National Register
 other (explain:)

[Signature] Signature of the Keeper 8-20-13 Date of Action

Hotel Holly/Haswell Hotel
Name of Property

Kiowa, Colorado
County and State

5. Classification

Ownership of Property
(Check as many boxes as apply.)

Category of Property
(Check only **one** box.)

Number of Resources within Property
(Do not include previously listed resources in the count.)

- private
- public - Local
- public - State
- public - Federal

- building(s)
- district
- site
- structure
- object

Contributing	Noncontributing	
4	1	buildings
0	0	district
0	0	site
0	0	structure
0	0	object
4	1	Total

Name of related multiple property listing
(Enter "N/A" if property is not part of a multiple property listing)

N/A

Number of contributing resources previously listed in the National Register

0

6. Function or Use

Historic Functions
(Enter categories from instructions.)

DOMESTIC/hotel

COMMERCE/TRADE/specialty store

Current Functions
(Enter categories from instructions.)

VACANT/NOT IN USE

7. Description

Architectural Classification
(Enter categories from instructions.)

OTHER/Foursquare

Materials
(Enter categories from instructions.)

foundation: STONE, CONCRETE

walls: STUCCO

roof: ASPHALT, METAL

other: _____

Hotel Holly/Haswell Hotel
Name of Property

Kiowa, Colorado
County and State

Narrative Description

(Describe the historic and current physical appearance of the property. Explain contributing and noncontributing resources if necessary. Begin with a **summary paragraph** that briefly describes the general characteristics of the property, such as its location, setting, size, and significant features.)

Summary Paragraph

Erected in 1907, the Hotel Holly/Haswell Hotel was the earliest public accommodation in Haswell, serving the area's residents, including teachers and work crews, as well as members of the traveling public. As one of the largest buildings in the community and with a popular dining room, the hotel became a gathering place for local social gatherings and other events. The Hotel Holly/Haswell Hotel historic district is located in the Town of Haswell in the western portion of Kiowa County on Colorado's eastern plains. The hotel occupies a 0.4-acre, roughly rectangular parcel at the southeast corner of Main Street and Colorado State Highway 96 (4th Street), the town's commercial roadways (Photographs 1 and 2). The hotel complex lies about a block south of the former Missouri Pacific Railroad tracks and immediately north of the Haswell Post Office (the former Haswell State Bank). In addition to the hotel building, the hotel complex includes four additional associated resources: an office/filling station (northwest of the house), bunkhouse (west of the house), chicken coop (southeast of the house), and garage (west). The large corner location is partially encircled by a woven wire fence (collapsed in places) with a gate on the west (Photograph 8). A short length of picket fence is west of the filling station. A concrete sidewalk passes along the north side of the yard, and a sidewalk leads through the gate to the porch; there are sections of brick walkway east and west of the porch. The front yard contains multiple trees (junipers and willows), and the landscape includes some grass, planters on tree stumps, juniper and lilac shrubs, flower beds, and a hedge to the east.

Narrative Description

The Hotel Holly/Haswell Hotel Historic District includes five resources: the two-story hotel building (Resource 1); false front land office/filling station building (Resource 2); bunkhouse (Resource 3); chicken coop (Resource 4); and garage (Resource 5). Four of the five resources are evaluated as contributing. The garage is assessed as noncontributing because it was moved to the parcel after the hotel's period of significance. Each of the resources in the district is described below; resource numbers and photographic references are keyed to the enclosed sketch map.

Hotel Holly/Haswell Hotel, 1907, Resource 1, Contributing, Building, Photographs 3 through 8. The hotel is a two-story building with textured stucco walls crowned by a shallow hipped roof with flared, overhanging eaves and asphalt composition roofing. A tall, red brick chimney with a corbelled top is present on the east roof slope. On the front (north wall) the hotel displays a center, projecting front porch with a concrete deck and battered, stucco piers supporting a shed roof with overhanging eaves and exposed rafter tails (Photograph 3). The east and west ends of the porch have solid, stucco balustrades. At the east end, the porch is enclosed, creating a slightly inset entrance bay with eight-light wood doors on the north and west. Bays at each end of the main wing display single windows on each story. A tall, flat arch, double-hung sash window with plain wood surround with narrow lintel trim is east of the porch, with a similar window aligned above. A shorter six-over-six-light double-hung sash window with narrow wood surround is west of the porch, with a one-over-one-light window (like those toward the east) aligned above.

The west wall displays two one-over-one-light double-hung sash windows on each story (Photograph 4). The windows at the north end are aligned vertically, while further south the upper story window is closer to the southwest corner than the first story window.

From the west end, the three-bay south wall contains a one-over-one-light double-hung sash window on the first story above a metal bulkhead door to the cellar; a similar window is aligned above on the upper story (Photographs 5 and 6). At the center of the wall is a rectangular bay window with a wood-shingled hipped roof, tall one-over-one-light double-hung sash windows on the west and east walls, and paired windows on the south wall. The windows have screens with decorative frames. A single window is centered above the bay window on the second story. At the east end of the wall are a paneled door and a window aligned above. A rectangular, one-story, stucco projection with an asymmetrical gable roof with composition roofing extends outward to the south and east. The projection contains an inset bay at the south end of the west wall that is clad with horizontal board siding has a one-over-one-light double-hung sash window. The south wall of the one-story projection has small one-over-one-light double-hung sash window.

Hotel Holly/Haswell Hotel
Name of Property

Kiowa, Colorado
County and State

The east wall of the projection contains a wood door and wood screen door with a gooseneck light fixture above (Photographs 6 and 7). The projection incorporates what appears to be an older component toward the north. The east wall of the older component is stucco and displays a remnant of a sloping eave, as well as a small two-part wood frame window and metal along its foundation. The second story of the main wing is visible above this projection and the south end has a small nine-light window and a flat wood door with a wood screen door. Further north, the east wall includes a second stucco projection with a shed roof and a boarded up window. The north end of the upper story contains a one-over-one-light double-hung sash window. The north wall of the shed roof projection is blank and flush with the front wall of the main wing.

Alterations. A circa 1908 or 1909 photograph of the hotel shows it with a shed roof porch with slender shaped supports (not the current ones) and a stepped back shed roof projection on the east. The present concrete porch, visible in historic photographs, was added to the hotel in 1922. The rear bay window dates to 1925. Stucco probably was added to the walls during the 1910-16 ownership of Daniel O. Strohl, who advertised his services for plastering and cement work in the local newspaper. An original chimney on the west roof slope is no longer present. A 1961 fire map of Haswell shows the building with the set back east projection; since that time the projection has been extended toward the front in its current configuration. A newspaper article opined in 1962 the hotel “stands remarkably unchanged. A bathroom has been added, the kitchen enlarged, and a utility room with showers has been built.”¹

Eckles Land Office/Conoco Filling Station, 1919, Resource 2, Contributing, Building, Photographs 9 and 10.

Adjacent to Colorado Highway 96 at the northeast corner of the parcel is a false front, rectangular (28'3" x 18'4"), one-and-a-half-story stucco building facing north. The gabled roof behind the false front is clad with corrugated metal roofing. The façade (north) contains a large square window opening to the east and a paneled and glazed door (glazing boarded) to the west, which opens onto a concrete stoop. The east and west walls are blank. The rear (south) wall features an off-center paneled and glazed door (glazing boarded) to the west, a tall one-over-one-light window to the east, and a two-light window in the gable face. About 10' west of the building is a slightly raised concrete gasoline pump island with two capped metal pipes near the center and two metal posts with hooks at each end.

Alterations. The front window opening once held paired one-over-one-light double-hung sash windows. The two gas pumps once mounted on the concrete island were probably removed after 1976.

Bunkhouse, 1907-11, Resource 3, Contributing, Building, Photographs 11 and 12. East of the hotel is a one-story, shed roof rectangular (21'6" x 9'3") bunkhouse, facing west toward the hotel. The roof has overhanging eaves and is clad with corrugated metal roofing. The walls are stucco and have corner boards. The front wall contains a vertical board door near the south end and a one-over-one-light window with plain wood surround to the north. The east wall has a single-light window slightly south of center, and the north wall contains a center one-over-one-light window. The south wall is blank.

Chicken Coop, 1907-11, Resource 4, Contributing, Building, Photographs 13 and 14. The rectangular (21'3" x 12'2") chicken coop is located southeast of the hotel. The building faces south and has a shed roof clad with wood shingles, overhanging eaves, and exposed raftertails on the north. There is a short red brick chimney topped with a tall clay pipe. The front wall features vertical board sections on the east and west ends and a center section with a band of screened openings at the top above a glazed area with six-light windows (some missing). There is stucco on the wall below the windows and a vertical board door is on the east. The remaining walls are blank and stuccoed.

Garage, year built unknown, Resource 5, Noncontributing, Building, Photographs 15 and 16. This roughly square (21'2" x 20'11") double-car garage lies west of the hotel and faces south. The garage has a front gable roof with overhanging eaves and exposed rafters. Walls are stucco over horizontal boards. There is a full-width open entrance on the south. The building does not have a foundation.

Alterations. Some stucco has fallen from the east wall near the center. The garage was moved to the parcel between 1998 and 2001, after the district's period of significance, and is therefore assessed as noncontributing.²

¹ *Pueblo Chieftain*, 13 May 1962; Mountain States Inspection Bureau, Haswell, Colorado, fire insurance map, 1961.

² The garage is not shown in this location in a 1998 National Aerial Imagery Program aerial image but is shown on the 2005 image. www.googleearth.com (accessed 25 November 2012).

Hotel Holly/Haswell Hotel
Name of Property

Kiowa, Colorado
County and State

Integrity

The Hotel Holly/Haswell Hotel maintains a substantial level of historic physical integrity. The hotel is still in its original location at the southwest corner of Colorado 96 and Main Street. The surroundings have undergone some changes since the historic period, most notably the demolition of several commercial buildings once present along the north side of the highway. The immediate setting is untended and suffering from drought, but retains elements of the historic landscape, such as the fence, walkways, planting beds, shrubs, and trees. While experiencing some years of deterioration and deferred maintenance, the hotel possesses integrity of design, materials, and workmanship. Changes to the original construction, such as the application of stucco and alterations to the hotel porch, occurred within the period of significance. The contributing outbuildings have experienced few changes in design. The hotel complex still contains the layout of the historic period and most of the buildings its operators deemed important to its role as a small town hostelry, including the hotel building, a filling station, bunkhouse, and chicken house. A two-room privy and blacksmith shop/garage are no longer present; only one noncontributing resource (the current garage) has been moved into the district. The property is presently vacant and no longer used as a hotel. The hotel retains integrity of association with the commercial past of Haswell, as one of the town's few remaining commercial resources and anchoring what was the town's principal business intersection and playing a vital role in its history. The building retains integrity of feeling as one of the largest buildings in town, which provided hospitality, convenience, and reliable lodgings for travelers and long term guests.

Hotel Holly/Haswell Hotel
Name of Property

Kiowa, Colorado
County and State

8. Statement of Significance

Applicable National Register Criteria

(Mark "x" in one or more boxes for the criteria qualifying the property for National Register listing.)

- A Property is associated with events that have made a significant contribution to the broad patterns of our history.
- B Property is associated with the lives of persons significant in our past.
- C Property embodies the distinctive characteristics of a type, period, or method of construction or represents the work of a master, or possesses high artistic values, or represents a significant and distinguishable entity whose components lack individual distinction.
- D Property has yielded, or is likely to yield, information important in prehistory or history.

Criteria Considerations

(Mark "x" in all the boxes that apply.)

Property is:

- A Owned by a religious institution or used for religious purposes.
- B removed from its original location.
- C a birthplace or grave.
- D a cemetery.
- E a reconstructed building, object, or structure.
- F a commemorative property.
- G less than 50 years old or achieving significance within the past 50 years.

Period of Significance (justification)

The period of significance for the Hotel Holly/Haswell Hotel historic district extends from 1907 (the year the building was erected) to 1963, consistent with National Register guidelines.

Criteria Considerations (explanation, if necessary)

None.

Areas of Significance

(Enter categories from instructions.)

COMMERCE

SOCIAL HISTORY

Period of Significance

1907-63

Significant Dates

1907

Significant Person

(Complete only if Criterion B is marked above.)

N/A

Cultural Affiliation

N/A

Architect/Builder

N/A

Hotel Holly/Haswell Hotel
Name of Property

Kiowa, Colorado
County and State

Statement of Significance Summary Paragraph (Provide a summary paragraph that includes level of significance and applicable criteria.)

Built by Acquilla Hollingsworth in 1907, the Holly Hotel/Haswell Hotel is significant under Criterion A in the areas of Commerce and Social History at a local level of significance. The hotel has significance in the field of Commerce as one of the first business buildings erected in Haswell, operating as a hostelry for about sixty years. In the area of Social History, the hotel served from its inception as a center of social activities for the town, including meetings, dinners, and celebrations. The hotel is associated with the Hollingsworth family, among the most prominent early pioneers of Haswell, and with the Rebel and Covalt families who each operated the hotel for many years. Writing in 1962, reporter Mrs. Leonard Stoker described the hotel and its tree-filled yard "a landmark on the broad eastern Colorado prairies."³

Narrative Statement of Significance (Provide at least **one** paragraph for each area of significance.)

The Hotel Holly/Haswell Hotel is significant in the area of Commerce, dating to the year Haswell was platted and serving as the town's only hotel from 1907 through the mid- to late-1960s. Since most of the town's early commercial buildings along Main Street or Highway 96 (4th Street) have been demolished or substantially altered, the hotel is a rare surviving example of Haswell's early twentieth century commercial life. As in small towns throughout the country, the hotel was one of the first and most important buildings erected in the community, whose vitality depended on the provision of lodgings for new settlers and visitors.⁴ Acquisition of a good hotel was considered a sign of a town's potential for future success. The hotel provided rooms and meals for town visitors, travelers along Colorado Highway 96, and threshing and construction crews in a sparsely populated section of Kiowa County with extremely limited lodging options. Before the creation of good roads and high speed travel, hotels provided necessary amenities for local residents and persons passing through a town. The hotel parcel also includes an example of a false front building used as a land office and later a gasoline filling station, providing needed services for town residents and travelers, and a historic bunkhouse and chicken coop, reflecting a range of buildings associated with the commercial operation.

In the area of Social History the Hotel Holly/Haswell Hotel served as a hub of community activities, a role it shared with the Haswell Women's Booster Club building (no longer extant) after the latter's construction in 1919. The hotel possessed facilities for large community functions and celebrations, such as well-attended holiday meals. As one of the few large indoor spaces in the area during the town's early history, the hotel became the site of group meetings, fundraising events, and family gatherings. Hotels provided a place for people to relax and socialize with friends, other local residents or family members, and visitors, with the additional benefit of having impressive meals prepared for such occasions. As described by John A. Jakle and Keith A. Sculle, "Up-to-date hotels were something to be proud of collectively. Their aura potentially graced everyone, transient and local resident alike."⁵ The community center role appears to have been notable under the proprietorship of John Rebel, who served in several government offices during the 1920s, but reportedly continued under the tenure of the Covalt family from the 1940s through the 1960s.

Developmental history/additional historic context information (if appropriate)

Acquilla Hollingsworth Constructs the Holly Hotel

Acquilla Hollingsworth, formerly of Iowa, arrived at the future site of Haswell in early March 1907. He filed a homestead claim on the quarter section that became the southeast part of the town, "the dividing line of point being in the center of the intersection of the two main streets." Hollingsworth planned to build a hotel, and on 1 March 1907 the newspaper reported that two teams were busy hauling brick for the foundation of the building, which would be built as soon as the lumber arrived. In April Hollingsworth's wife arrived.⁶

³ *Pueblo Chieftain*, 20 May 1962.

⁴ See, David Allen Fyfe, "Commerce and Sociability in Small Town America," Ph.D. dissertation, Penn State University, State College, Pennsylvania, 2008.

⁵ John A. Jakle and Keith A. Sculle, *America's Main Street Hotels: Transiency and Community in the Early Auto Age* (Knoxville, Tennessee: University of Tennessee Press, 2009), 46.

⁶ *Pueblo Chieftain*, 13 May 1962.

Hotel Holly/Haswell Hotel

Name of Property

Kiowa, Colorado

County and State

Among the earliest features at the location were railroad facilities, which by 1890 included a section house, a tool house, a platform, stockyards and pens.⁷ Shortly after the turn of the century, coal chutes (ca. 1901-02) and a water tank (1904) were added.⁸ All supplies had to be obtained elsewhere and transported to the settlement. The adjacent townsite of Haswell, platted in 1907 by H.E. Dean, also began to develop, with construction of the first store and a lumberyard.

Once completed, Hotel Holly (derived from Hollingsworth) quickly became the social center of the town, hosting large dinners and special events. The hotel originally featured ten guest rooms with coal used as a heating source. In 1908, Hollingsworth platted the addition that bears his name and on which the hotel is located. An article by Mrs. Leonard Stoker about the hotel indicated, "In the old days, Hotel Holly stood ready in a sparsely settled area to provide beds for 50 cents a night and meals served family style for 25 cents for all the food an alert traveler could reach before it was gone."⁹

The Holly Hotel developed a reputation for its meals. In November 1908 the newspaper reported that the Sunshine Circle and the Sunday School would serve a chicken pie dinner at the hotel on Thanksgiving Day to benefit the Sunday School, an all-you-can-eat meal priced at 25 cents. More than 100 meals were served and a photograph taken to mark the event (see Figures 1 through 3). In 1909 Acquilla Hollingsworth hired a man to witch for water on the hotel grounds. A well was located under the front gate. Cowboys found the hotel a convenient place to stay; one reportedly rode his horse up the stairs and left still-visible hoof prints on the treads.¹⁰ A tree salesman traded trees for room and board, and the trees were planted on the grounds.¹¹

Operation of the Hotel in the 1910s

Acquilla Hollingsworth sold the property to Daniel O. Strohl in June 1910. In 1911, the *Kiowa County Press* noted, "Long looked for and needed hotel. Mr. and Mrs. Strohl took charge of the Hotel Holly and by their work show the people that they are running a first class hotel. Their beds are fine, their meals superb and what more can the people of Haswell ask for. A hotel to draw the travelers to Haswell. Nothing can beat it between Pueblo and Eads." The Strohls dropped the Hotel Holly name in favor of Haswell Hotel early in their ownership.¹² The *Kiowa County Press* described Mrs. Strohl as "the genial landlady of the Haswell hotel" in January 1912.¹³

In addition to running the hostelry, Daniel Strohl advertised plaster and cement work in 1911 and 1912, and he probably stuccoed the buildings. In January 1916, the Haswell Hotel advertised prompt service and "good home cooking--our pride." L.E. Wallen was listed as the proprietor of the business, although Strohl remained the owner.¹⁴ In October 1916, the *Haswell Herald* told its readers: "The Haswell Hotel changed hands last week. A man from Kansas [John Herbert], who obtained ownership in a trade with Mr. Strohl, sold the place to Mrs. Nellie Swisher."¹⁵

Nellie Swisher claimed a homestead north of Haswell in the early twentieth century and was active in the Haswell Women's Booster Club.¹⁶ The Swisher tenure was brief. She sold the property in October 1919 to William F. Eckles, who served as the local justice of the peace, notary public, and dealer in real estate. Later that month, the *Haswell Herald* reported: "The sand is being hauled for W.F. Eckles new office which will be built on part of the ground which he purchased with the hotel." This article refers to the small false front building at the northeast corner of the parcel, which Eckles used as a land (or real estate) office. He placed the building adjacent to the state highway to attract the notice of passers-by.¹⁷

⁷ Missouri Pacific Railway Company, Listing of Bridges and Buildings, 1 July 1890, provided by Charlie Duckworth, mopac@yahoogroups.com, 7 November 2012.

⁸ Kiowa County Public Library, *Railroads in the Development of Kiowa County*, 22-23.

⁹ *Pueblo Chieftain*, 13 May 1962.

¹⁰ This could not be confirmed, as the floors and stairs are now carpeted.

¹¹ *Pueblo Chieftain*, 13 May 1962.

¹² This may have been to reflect Hollingsworth's departure from the business, more clearly identify the location of the hotel, and avoid confusion with the Town of Holly in eastern Prowers County. *Kiowa County Press*, 24 February 1911, 2.

¹³ *Kiowa County Press*, 19 January 1912, 4.

¹⁴ *Kiowa County Press*, 24 February 1911, 2, 5 May 1911, 3, 19 January 1912, 4, 2 February 1916, 2; *Haswell Herald*, 20 January 1916, 4.

¹⁵ *Haswell Herald*, 12 October 1916, 1.

¹⁶ *Haswell Herald*, 24 June 1915, 8 and 31 January 1918, 1.

¹⁷ *Haswell Herald*, 23 October 1919, 1.

Hotel Holly/Haswell Hotel
Name of Property

Kiowa, Colorado
County and State

The Rebel Tenure, 1920-1947

Eckles retained ownership for only a few months, selling in January 1920 to Mr. and Mrs. John Rebel (pronounced rē'-bel), who operated the hotel for 26 years. A particular source of revenue for the Rebels was providing room and board for the single women teachers at the Haswell School.¹⁸ The couple advertised the building as the "Haswell Hotel," and offered "good meals, clean beds, and special Sunday dinners."¹⁹ In 1922, the *Haswell Herald* reported, "John Rebel is building a concrete porch on the hotel. This certainly improves the looks of the place. With the stand of grass which he has John has made a wonderful improvement in the hotel since he purchased it a few years ago. This is what we need more improvements in town to the buildings and yards."²⁰ A 1923 advertisement for the hotel promised hot and cold water, bath, and clean beds. The restroom was a frame, two-room building on the hotel grounds with a two-seater in each room.²¹

In 1925 the *Kiowa County Press* reported John Rebel installed a new bay window in the hotel and built a fence around the lawn, commenting: "Mr. Rebel's hotel grounds set a fine example for beautifying our premises and add to the attractiveness of our town."²² Information at the Haswell Community Center indicates Rebel built a raised fish pond in the yard of the hotel during the 1930s using local rock (see Figure 4).²³ Haswell native Doris Forsythe relates her earliest memories of the hotel were "how pretty the yard was." According to Forsythe, the hotel was one of the few places in town that had long distance telephone access in the early 1940s, and residents of the town and surrounding farms and ranches came to the hotel to place calls.²⁴

Despite Rebel's efforts to improve the hotel and the placement of frequent display advertisements, the business may not have provided a sufficiently steady or adequate income for the family. During the 1920s, John Rebel undertook such jobs as dehorning cattle, erecting windmills, and providing blacksmithing services in a building (no longer extant) on the property.²⁵ He also served as town marshal (1921), county commissioner (1924), and town clerk.

The false front building on the property continued to be used as a real estate office during the Rebel tenure. William Eckles may have continued to operate his business in the building after selling the property to Rebel; in July 1920 Eckles announced he was agent for the W.E. Stewart Land Company. An airplane was brought in to take prospective buyers on short flights to interest them in real estate, according to Alvin Siefkas.²⁶

The Hotel During the Covalt Tenure, 1947-76

Charles J. and Effie A. Covalt, Sr., both natives of Kansas, purchased the property in 1947. They discontinued meal service, renting only rooms, but continued the hotel's role as an informal community center. Their son and daughter-in-law, Charles J. and Mary S. Covalt, Jr., assisted them in running the business. In response to the expanded postwar production of wheat and the associated presence of combine crews in the area during harvest season, in 1949 the Covalts installed an outdoor wash room at the hotel, "where a person may secure a bath or shave. It helps those in trailer houses and tents."²⁷ In 1952, the Covalt, Jr.'s twenty-month-old daughter, Cheryl Jane, drowned in the hotel fish pond, which was covered with wire netting to keep small children out. She somehow fell under the netting and could not escape. The pond was then removed. The elder Mrs. Covalt died in 1955, followed by her husband in 1957.²⁸

Charles J. Covalt, Jr. and his wife became owners of the property in 1957. He had served in the Army Air Corps during World War II. While Mrs. Covalt cared for the hotel and her family, Mr. Covalt operated a Conoco filling station and radio and television repair shop in the false front building (see Figure 5). He also worked as a journeyman electrician and was

¹⁸ Doris Forsythe, Port Orchard, Washington, email to Laurie Simmons, 31 October 2012.

¹⁹ *Haswell Herald*, 27 October 1921, 8.

²⁰ *Haswell Herald*, 6 July 1922, 1.

²¹ No longer extant, the location of the privy is unknown. Roleta D. Teal and Betty Lee Jacobs, *Kiowa County* (Eads: Kiowa County Bicentennial Committee, 1976), 397-98; Ruthanna Jacobs, comp., *Kiowa County Colorado Centennial History, 1989* (Dallas: Curtis Media Corp., 1989), 134.

²² *Haswell Herald*, 6 July 1922, 1, 1 March 1923, 8; *Kiowa County Press*, 20 February 1925, 1; Teal and Jacobs, *Kiowa County*, 398.

²³ *Haswell Herald*, 6 July 1922, 1.

²⁴ Doris Forsythe, Port Orchard, Washington, email to Laurie Simmons, 31 October 2012.

²⁵ *Kiowa County Press*, 17 April 1925, 1 and 27 May 1927, 1.

²⁶ *Haswell Herald*, 15 July 1920; Alvin Siefkas, Eads, Colorado, Interview by Thomas H. Simmons, 30 November 2009.

²⁷ No longer extant, the location of the outdoor washroom is unknown.

²⁸ *Bent County Democrat*, 15 July 1949, 8; *Kiowa County Press*, 12 September 1952, 1; *Pueblo Chieftain*, 13 May 1962.

Hotel Holly/Haswell Hotel
Name of Property

Kiowa, Colorado
County and State

employed at the Haswell Lumber Company. Writing in 1962, Mrs. Leonard Stoker reported “even in the last couple of years the hotel has been filled to capacity with harvest workers and men on construction jobs” and noted the Covalts made the hotel “a center for much activity”²⁹ (see Figure 6). Charles Covalt died in 1969, and his wife owned the property until 1976. The property apparently stopped functioning as a hotel sometime in the mid- to late-1960s. A 1991 newspaper article noted that the hotel closed “several years ago.”³⁰

Later Owners

Arkansans Elmer D. Bright and his wife bought the property in 1976. According to local resident James Englehardt, Mr. Bright taught in the public school at Haswell and attempted to farm outside of town, while operating the hotel as a halfway house for Vietnam-era veterans from the Fort Lyon Veterans Hospital. Later owners of the property included Jackie Henderson (1984-91), Lena M. Borer (1991-97), and Ronnie L. and Bonita J. Bohrer (1997-2001). Mr. Bohrer’s mother lived in the hotel building in the 1990s. In December 2001, Charles E. and Cathy L. Nuckols acquired the property. Charles Nuckols died in 2006 before the couple could realize plans for the property. Cathy Nuckols, is the current owner, and the property is vacant. Family members hope to rehabilitate the hotel as a bed and breakfast or other venture and restore its importance to the community.³¹

9. Major Bibliographical References

Bibliography (Cite the books, articles, and other sources used in preparing this form.)

Colorado Historical Society. Architectural Inventory Form. Haswell Hotel. 5KW.33. 1977.

Colorado State Business Directory. 1910 and 1923.

Eikenberg, Karl. “Haswell: What is There to Know?” Kiowa County: A Retrospective at the Dawn of a New Millennium. accessed at <http://web.archive.org/web/20050727082600/http://www.eadseagles.com/eikenberghaswell.htm>. Accessed on 16 June 2009.

Englehardt, James. Haswell, Colorado. Interview by Thomas H. and R. Laurie Simmons. 11 September 2012.

_____. Haswell, Colorado. Telephone Interview by Thomas H. Simmons. 1 December 2012.

Englehardt, James and Clea (Covalt). Photograph and clippings collection. Haswell, Colorado.

Forsythe, Doris, Port Orchard, Washington. Email to Laurie Simmons. 31 October 2012.

Fyfe, David Allen. “Commerce and Sociability in Small Town America.” Ph.D. dissertation. Penn State University, State College, Pennsylvania, 2008.

Haswell Community Center. Haswell, Colorado. Historic Photographs and Captions Display.

Haswell Herald. 24 February 1911, 2, 19 January 1912, 4, 24 June 1915, 8, 30 December 1915, 8, 20 January 1916, 4, 12 October 1916, 1, 31 January 1918, 1, 9 December 1920, 6. 28 July 1921, 1, 6 July 1922, 1, 6 September 1923, 8.

Jakle, John A. and Keith A. Sculle. *America’s Main Street Hotels: Transiency and Community in the Early Auto Age*. Knoxville, Tennessee: University of Tennessee Press, 2009.

Kiowa County Abstract Company Records. Eads, Colorado.

Kiowa County Assessor Records. Eads, Colorado.

Kiowa County Press. 23 Sep. 1921, 1, 1 Mar. 1923, 1, 6 Sep. 1923, 8, 20 Feb. 1925, 1, 17 Apr. 1925, 1.

Nuckols, Cathy. Thornton, Colorado. Holly Hotel Owner. Telephone Interview by R. Laurie Simmons. September 2012.

Myreda Nuckols. Thornton, Colorado. Interview by Laurie Simmons. 11 September 2012.

Pueblo Chieftain. 13 and 20 May 1962, 15 February 1991.

²⁹ *Pueblo Chieftain*, 20 May 1962.

³⁰ *Pueblo Chieftain*, 15 February 1991.

³¹ Myreda Nuckols, Thornton, Colorado, Interview by Laurie Simmons, 11 September 2012.

Hotel Holly/Haswell Hotel
Name of Property

Kiowa, Colorado
County and State

Siefkas, Alvin, Eads, Colorado. Interview by Thomas H. Simmons. 30 November 2009.

Sterns, Betty J., project director. *The War Years and the Veterans of Kiowa County, Colorado*. Dallas: Curtis Media, 1995.

Teal, Roleta D. and Betty Lee Jacobs. *Kiowa County*. Eads: Kiowa County Bicentennial Committee, 1976.

Previous documentation on file (NPS):

- preliminary determination of individual listing (36 CFR 67 has been requested)
- previously listed in the National Register
- previously determined eligible by the National Register
- designated a National Historic Landmark
- recorded by Historic American Buildings Survey # _____
- recorded by Historic American Engineering Record # _____
- recorded by Historic American Landscape Survey # _____

Primary location of additional data:

- State Historic Preservation Office
- Other State agency
- Federal agency
- Local government
- University
- Other
- Name of repository: History Colorado

Historic Resources Survey Number (if assigned): 5KW.33

10. Geographical Data

Acreage of Property Less than one

(Do not include previously listed resource acreage.)

The UTM reference point was derived from heads up digitization on Digital Raster Graphic (DRG) maps provided to OAHF by the U.S. Bureau of Land Management.

UTM References

(Place additional UTM references on a continuation sheet.)

			(NAD 83)		
1	<u>13</u>	<u>660308</u>	<u>4257478</u>	3	_____
	Zone	Easting	Northing		Zone Easting Northing
2	_____	_____	_____	4	_____
	Zone	Easting	Northing		Zone Easting Northing

Verbal Boundary Description (Describe the boundaries of the property.)

The nominated area includes the north 125' of Lots 1 through 4 and all of Lot 5, Hollingsworth Addition, Town of Haswell, Kiowa County, Colorado, as shown on the included to-scale sketch map.

Boundary Justification (Explain why the boundaries were selected.)

The nominated area includes all of the land historically associated with the hotel and its operations.

11. Form Prepared By

name/title R. Laurie Simmons and Thomas H. Simmons, Historians (for the owner)

organization Front Range Research Associates, Inc. date 21 January 2013

street & number 3635 West 46th Avenue telephone 303-477-7597

city or town Denver state CO zip code 80211

e-mail frraden@msn.com website www.frhistory.com

Hotel Holly/Haswell Hotel
Name of Property

Kiowa, Colorado
County and State

Additional Documentation

Submit the following items with the completed form:

- **Maps:** A **USGS map** (7.5 or 15 minute series) indicating the property's location.

A **Sketch map** for historic districts and properties having large acreage or numerous resources. Key all photographs to this map.

- **Continuation Sheets**
- **Additional items:** (Check with the SHPO or FPO for any additional items.)

Photographs

Submit clear and descriptive photographs. The size of each image must be 1600x1200 pixels at 300 ppi (pixels per inch) or larger. Key all photographs to the sketch map.

Name of Property: Hotel Holly/Haswell Hotel

City or Vicinity: Haswell

County: Kiowa **State:** Colorado

Photographer: Thomas H. Simmons

Date Photographed: September 2012

Digital Images: CO_Kiowa_HotelHolly/HaswellHotel_0001 through _0016

Description of Photograph(s), number, and camera direction:

1 of 16, CO_Kiowa_HotelHolly/HaswellHotel_0001, overview of hotel complex from the north side of Colorado Highway 96, showing (left to right) the bunkhouse, land office, and hotel buildings, view southwest, September 2012.

2 of 16, CO_Kiowa_HotelHolly/HaswellHotel_0002, overview of hotel complex from the property to the east, showing (left to right) the chicken coop, hotel, bunkhouse, and land office, view northwest, September 2012.

3 of 16, CO_Kiowa_HotelHolly/HaswellHotel_0003, hotel front (north) wall, view south, September 2012.

4 of 16, CO_Kiowa_HotelHolly/Haswell Hotel_0004, hotel front (north) and west walls, with the garage to the right, view southeast, September 2012.

5 of 16, CO_Kiowa_HotelHolly/Haswell Hotel_0005, hotel rear (south) and part of west walls, view north-northeast, September 2012.

6 of 16, CO_Kiowa_HotelHolly/Haswell Hotel_0006, hotel rear (south) and east walls with the garage in the distance to the left, view northwest, September 2012.

7 of 16, CO_Kiowa_HotelHolly/Haswell Hotel_0007, hotel east wall, view west, September 2012.

8 of 16, CO_Kiowa_HotelHolly/Haswell Hotel_0008, woven wire fence and gate along the west edge of the property with the hotel and garage to the right, view east, September 2012.

9 of 16, CO_Kiowa_HotelHolly/Haswell Hotel_0009, land office/filling station front (north) and west walls with the raised gasoline pump island in the foreground, view east-southeast, September 2012.

10 of 16, CO_Kiowa_HotelHolly/Haswell Hotel_00010, office/filling station rear (south) and east walls, view northwest, September 2012.

11 of 16, CO_Kiowa_HotelHolly/Haswell Hotel_00010, bunkhouse front (west) and south walls, view northeast, September 2012.

12 of 16, CO_Kiowa_HotelHolly/Haswell Hotel_00012, bunkhouse rear (east) and north walls, view southwest, September 2012.

Hotel Holly/Haswell Hotel
Name of Property

Kiowa, Colorado
County and State

13 of 16, CO_Kiowa_HotelHolly/Haswell Hotel_00013, chicken coop front (south) and east walls, view northwest, September 2012.

14 of 16, CO_Kiowa_HotelHolly/Haswell Hotel_00014, chicken coop rear (north) and west walls, view southeast, September 2012.

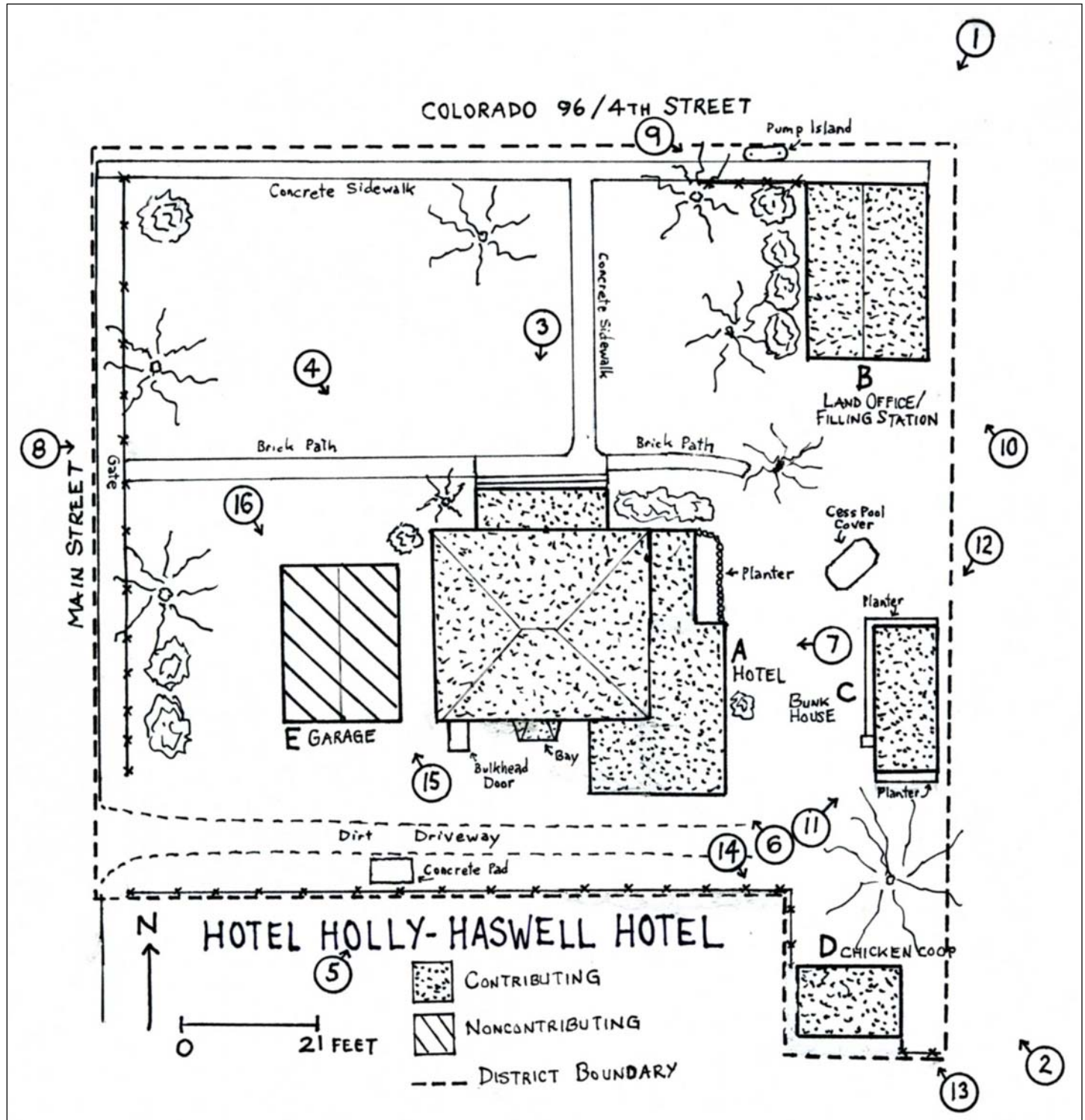
15 of 16, CO_Kiowa_HotelHolly/Haswell Hotel_00015, garage front (south) and east walls, view northwest, September 2012.

16 of 16, CO_Kiowa_HotelHolly/Haswell Hotel_00016, garage rear (north) and west walls, view south-southeast, September 2012.

Hotel Holly/Haswell Hotel
Name of Property

Kiowa, Colorado
County and State

Sketch Map

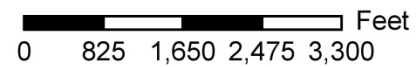
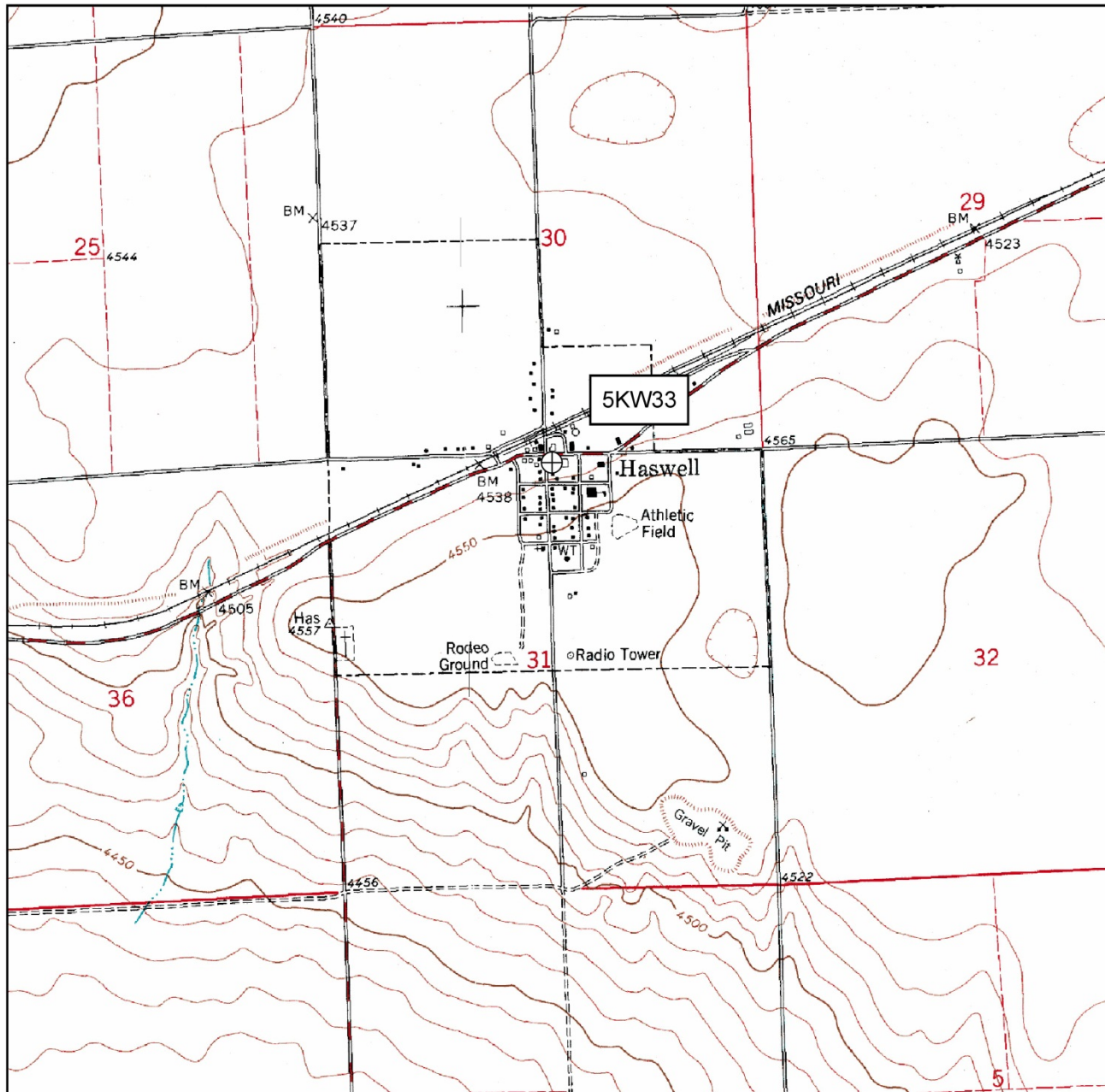


Numbers in circles with arrows indicate photograph locations and camera directions.

Hotel Holly/Haswell Hotel
Name of Property

Kiowa, Colorado
County and State

USGS Map



The crosshair indicates the location of the nominated resource. SOURCE: Extract of U.S. Geological Survey, Haswell, Colo., 7.5 minute quadrangle map (Denver: U.S. Geological Survey, 1974).

Hotel Holly/Haswell Hotel
Name of Property

Kiowa, Colorado
County and State

HISTORIC PHOTOGRAPH/FIGURE LOG

1 of 6, The Hotel Holly hosted a well-attended Thanksgiving dinner in 1907. This photograph was made into a postcard publicizing the hostelry. Courtesy James and Cleta (Covalt) Englehardt, photograph and clipping collection, Haswell, Colorado.

2 of 6, This ca. 1908-09 photograph (view southeast) shows the front and west wall of the Hotel Holly, with its original horizontal clapboard walls. Courtesy Haswell Community Center, historic photograph display.

3 of 6, The Hotel Holly is shown in this ca. 1911 view south with its original porch and a one-story shed roof section to the east. Note the bunkhouse present at the left edge of the photograph and what appears to be the chicken coop in the distance. Courtesy Kiowa County Historical Museum, photograph collection.

4 of 6, The Rebels engaged in extensive improvement of the hotel grounds, including trees, plantings and the raised circular fish pond with cobblestone walls (view southeast). Courtesy Haswell Community Center, historic photograph display, undated (ca. 1930s).

5 of 6, The false front building at the northeast corner of the property is shown in this undated (ca. 1950s) view southeast. Note the pump island featuring Conoco N-tane gasoline and the woven wire fence around the yard. Courtesy James and Cleta (Covalt) Englehardt, photograph and clipping collection.

6 of 6, This view (south) shows the front door of the hotel through the gate adjacent to Colorado Highway 96. Courtesy James and Cleta (Covalt) Englehardt, photograph and clipping collection, May 1960.

Hotel Holly/Haswell Hotel
Name of Property

Kiowa, Colorado
County and State



Figure 1. The Hotel Holly hosted a well-attended Thanksgiving dinner in 1907. This photograph was made into a postcard publicizing the hostelry. Courtesy James and Clea (Covalt) Englehardt, photograph and clipping collection, Haswell, Colorado.

Hotel Holly/Haswell Hotel
Name of Property

Kiowa, Colorado
County and State



Figure 2. This ca. 1908-09 photograph (view southeast) shows the front and west wall of the Hotel Holly, with its original horizontal clapboard walls. Courtesy Haswell Community Center, historic photograph display.



Figure 3. The Hotel Holly is shown in this ca. 1911 view south with its original porch and a one-story shed roof section to the east. Note the bunkhouse present at the left edge of the photograph and what appears to be the chicken coop in the distance. Courtesy Kiowa County Historical Museum, photograph collection.

Hotel Holly/Haswell Hotel
Name of Property

Kiowa, Colorado
County and State



Figure 4. The Rebels engaged in extensive improvement of the hotel grounds, including trees, plantings and the raised circular fish pond with cobblestone walls (view southeast). Courtesy Haswell Community Center, historic photograph display, undated (ca. 1930s).

Hotel Holly/Haswell Hotel
Name of Property

Kiowa, Colorado
County and State



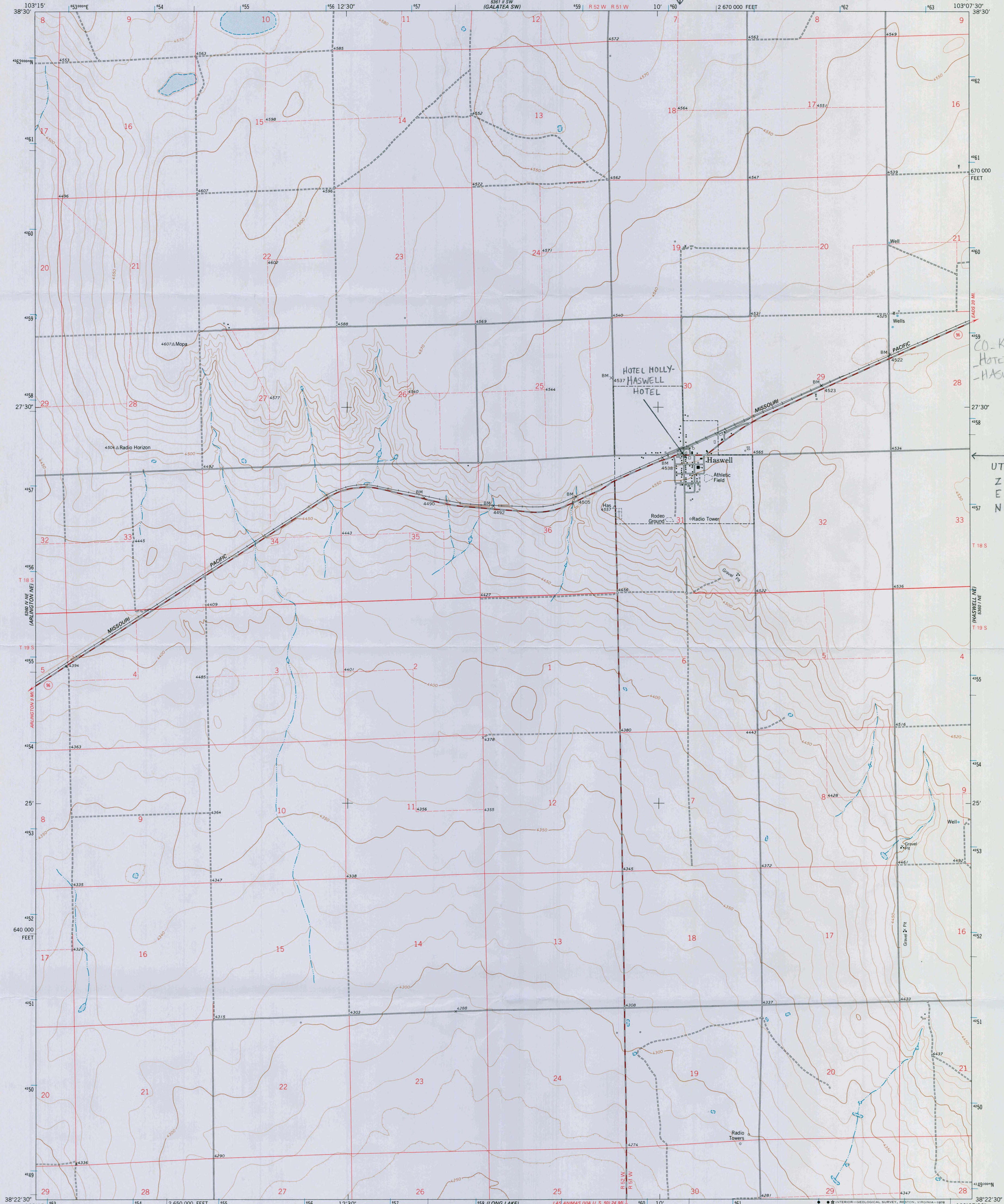
Figure 5. The false front building at the northeast corner of the property is shown in this undated (ca. 1950s) view southeast. Note the pump island featuring Conoco N-tane gasoline and the woven wire fence around the yard. Courtesy James and Clea (Covalt) Englehardt, photograph and clipping collection.

Hotel Holly/Haswell Hotel
Name of Property

Kiowa, Colorado
County and State



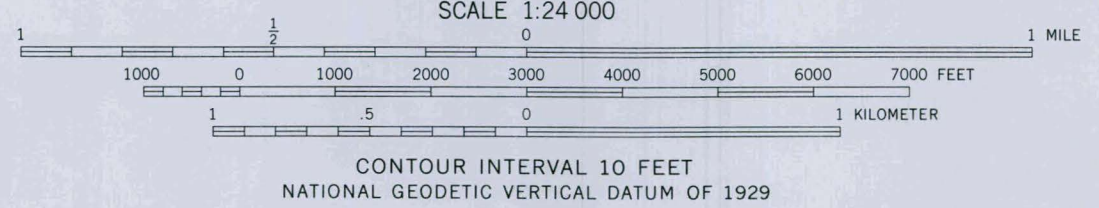
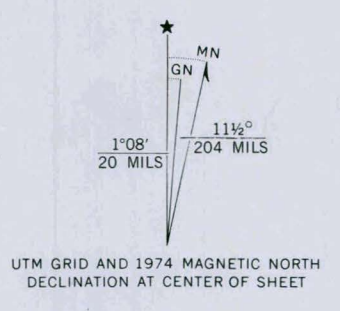
Figure 6. This view (south) shows the front door of the hotel through the gate adjacent to Colorado Highway 96. Courtesy James and Clea (Covalt) Englehardt, photograph and clipping collection, May 1960.



CO-KIOWA COUNTY
Hotel Holly-
-HASWELL HOTEL

NAD 83
UTM
Z 13
E 660308
N 4257478

Mapped, edited, and published by the Geological Survey
Control by USGS and NOS/NOAA
Topography by photogrammetric methods from aerial
photographs taken 1973. Field checked 1974
Projection and 10,000-foot grid ticks: Colorado
coordinate system, south zone (Lambert conformal conic)
1000-meter Universal Transverse Mercator grid ticks,
zone 13, shown in blue. 1927 North American datum
Fine red dashed lines indicate selected fence lines



Hotel Holly-Haswell Hotel
HASWELL, KIOWA COUNTY, CO

ROAD CLASSIFICATION

Primary highway, hard surface	Light-duty road, hard or improved surface
Secondary highway, hard surface	Unimproved road
Interstate Route	U.S. Route
	State Route



THIS MAP COMPLIES WITH NATIONAL MAP ACCURACY STANDARDS
FOR SALE BY U.S. GEOLOGICAL SURVEY, DENVER, COLORADO 80225, OR RESTON, VIRGINIA 22092
A FOLDER DESCRIBING TOPOGRAPHIC MAPS AND SYMBOLS IS AVAILABLE ON REQUEST

HASWELL, COLO.
N3822.5-W10307.5/7.5
1974
AMS 5360 1 NW—SERIES V877

HASWELL
ISBN # 0607119802 CO 024
TF
9780607119800

































UNITED STATES DEPARTMENT OF THE INTERIOR
NATIONAL PARK SERVICE

NATIONAL REGISTER OF HISTORIC PLACES
EVALUATION/RETURN SHEET

REQUESTED ACTION: NOMINATION

PROPERTY NAME: Hotel Holly--Haswell Hotel

MULTIPLE NAME:

STATE & COUNTY: COLORADO, Kiowa

DATE RECEIVED: 7/05/13 DATE OF PENDING LIST: 7/29/13
DATE OF 16TH DAY: 8/13/13 DATE OF 45TH DAY: 8/21/13
DATE OF WEEKLY LIST:

REFERENCE NUMBER: 13000608

REASONS FOR REVIEW:

APPEAL: N DATA PROBLEM: N LANDSCAPE: N LESS THAN 50 YEARS: N
OTHER: N PDIL: N PERIOD: N PROGRAM UNAPPROVED: N
REQUEST: N SAMPLE: N SLR DRAFT: N NATIONAL: N

COMMENT WAIVER: N

ACCEPT RETURN REJECT 8.20.13 DATE

ABSTRACT/SUMMARY COMMENTS:

**Entered in
The National Register
of
Historic Places**

RECOM./CRITERIA _____

REVIEWER _____ DISCIPLINE _____

TELEPHONE _____ DATE _____

DOCUMENTATION see attached comments Y/N see attached SLR Y/N

If a nomination is returned to the nominating authority, the nomination is no longer under consideration by the NPS.



OFFICE of ARCHAEOLOGY and HISTORIC PRESERVATION

June 28, 2013

Carol Shull
Acting Keeper of the National Register
National Register of Historic Places
1201 Eye "I" Street, N.W. 8th Floor (MS 2280)
Washington, D.C. 20005-5905

Re: National Register Nomination for the Hotel Holly/Haswell Hotel, 200 4th Street, Haswell, Kiowa
County, Colorado (5KW.33)

Dear Ms. Shull:

We are pleased to submit for your review the enclosed National Register of Historic Places nomination of the Hotel Holly/Haswell Hotel, Haswell, Colorado. In accordance with the new submission policy, enclosed please find:

- CD with a PDF nomination and support letters for the Hotel Holly/Haswell Hotel
Note: **The enclosed disk contains the true and correct copy of the nomination for the Hotel Holly/Haswell Hotel to the National Register of Historic Places.**
- CD with TIF images
- Physical photos
- Physical USGS map
- Physical nomination with original signature page

The State Review Board reviewed the nomination at its meeting on May 17, 2013. The board voted unanimously to recommend to the State Historic Preservation Officer that the nomination met the criteria for listing in the National Register.

We look forward to the listing of this nomination. If you have any questions, feel free to contact me at (303) 866-4684 or at heather.peterson@state.co.us.

Best regards,

A handwritten signature in blue ink that reads "Heather Peterson".

Heather Peterson
National & State Register Historian

Enclosures above noted



Alexa Roberts, Chairman
Betsy Barnett, Vice Chairman
Sharon Johnson, Secretary

Kim Barlow, Member
Jeff Campbell, Member
Kelly Courkamp, Member
Dan Richards, Member

March 4, 2013

Heather Peterson
National and State Register Historian
Office of Archaeology and Historic Preservation
History Colorado
1200 Broadway
Denver, CO 80203

Dear Ms. Peterson and the Review Committee:

Thank you for this opportunity to endorse and support the nominations being presented to you by Front Range Research Associates, Inc. (FRRRA) on behalf of the Kiowa County Historic Preservation Commission (KCHPC) in Kiowa County, Colorado. Once again, FRRRA has done an outstanding job of gathering and preparing the information tasked to do. Of the over 400 register eligible resources found just within the three incorporated towns in Kiowa County, it was difficult to choose which properties to select as our first nominees. Financial resources limited our ability to choose all of them. We instead attempted to choose a representative selection from across the entire county.

Four properties in Kiowa County are being nominated for inclusion on the National Register: the Eads School Gym; the Eads Community Church (Methodist Church); the Crow-Hightower House in Eads; and the Holly Hotel in Haswell, Colorado. All have held significance not only for their architecture but for their importance to their respective communities. The Eads School Gym, the Eads Community Church and the Crow-Hightower House are still in use. The Crow-Hightower House is a unique structure in that it is a round house built of brick. There is one other home like it in Kiowa County built by the same contractor. Although there are a few instances of round homes in the U.S., none have been documented in Colorado. It is the only privately owned resource being nominated by this commission. The Holly Hotel in Haswell is being considered by its owners for rehabilitation as a working bed and breakfast.

The three properties being considered for State Register inclusion are: the Jackson Barn in Eads; the Missouri-Pacific Depot in Haswell; and the Sheridan Lake School (Kiowa-Albright Memorial Center) in Sheridan Lake. The Jackson Barn was saved from demolition by local appeal and is being restored as a gateway and point of interest to the Jackson Pond wetlands area, a natural spring-fed eight-acre pond that is home to wildlife and migratory birds. The area is widely used by locals and is becoming known to state-wide birders. The Missouri-Pacific Depot in Haswell is a remarkable structure because of its architecture and because it's still standing. It is the only one known to be left in Colorado. With its State Register status, we hope to be able to insure its permanence. The Sheridan Lake School (Kiowa Albright Memorial Center) in Sheridan Lake is a testament to the endurance and strong will of agricultural people on the eastern plains. It was built in 1929 when times were especially tough on the plains (as they continue to be) because education was and still is an important goal.

The building has stood for nearly a century acting not only as a place of education but as a community center and post office. It remains today the hub of the small community of Sheridan Lake.

As a commission, we are proud of our heritage and would like to see a part of it recognized on the national and/or state level. We hope that you will agree that the nominations submitted to you are worthy of that honor.

Thank you for your consideration.

Sincerely,

A handwritten signature in black ink that reads "Alexa Roberts". The signature is written in a cursive style with a horizontal line at the end.

Alexa Roberts, Chair
Kiowa County Historic Preservation Commission



Town of Eads

P.O. Box 8
110 W. 13th Street
Eads, CO 81036-0008
Phone (719) 438-5590
Fax (719) 438-5652
Townofeads10@hotmail.com

Mayor

Marilyn K. Baxter

Trustees

Sharon Frazee
Larry D. Gifford
Sharon Johnson
William E. Koehler
Dennis Pearson
Darrell Stolzenberger

Director of**Public Works**

Van Brown, Jr.

Town Clerk

Vicky Wilcox

March 11, 2013

Heather Peterson
National and State Register Historian
Office of Archaeology and Historic Preservation
History Colorado
1200 Broadway
Denver, CO 80203

Dear Ms. Peterson and the State Review Committee:

The Board of Trustees of the Town of Eads, Colorado would like to add its support of the seven nominated properties being presented for the State and/or National Register of Historic Places. All of the nominated properties are worthy and are of significant importance to the history of Kiowa County.

The Town especially recognizes the relevance of the Jackson Barn, nominated to the State Register, and the Eads School Gymnasium, the Eads Community Church (Methodist Church) and the Crow-Hightower House, nominated to the National Register.

The Jackson Barn has been restored and is being repurposed as a trailhead to the Jackson Pond wetlands area. It will house interpretive displays on the history of Kiowa County, its people and agricultural heritage as well as information on the flora and fauna of the wetlands and birding/walking trail to the south. This old dairy barn from an agricultural experimental farm is seeing new life and providing education and enjoyment to the community.

The Eads Community Church (Methodist Church) is the oldest church in Eads and has been the center of community activities since its beginnings. It took over 30 years to complete construction but was in use during the entire time for not only religious rites but community activities of all kinds. It has truly been the heart of Eads. The Eads School Gymnasium has served a similar purpose as the Eads Community Church throughout the years. The Gym has not only been a place of recreation but also a place of education and community meeting/gathering place. Even after the new high school and gym were built, the old gym continues to be used regularly. The Crow-Hightower house on Maine Street in Eads is one of a very few round houses in the U.S. There are none listed on the State Register in Colorado at present. It is of unique construction and is a landmark in Eads. The home's owner was delighted to discover her home is register-eligible and is excited for the result.

We appreciate your consideration of these nominations and look forward to having State and National Register of Historic Places properties in our town.

Sincerely,

Marilyn Baxter, Mayor

EADS CHAMBER OF COMMERCE
PO BOX 163
EADS, CO 81036

March 18, 2013

Ms. Heather Peterson
National and State Register Historian
Office of Archaeology and Historic Preservation
History Colorado
1200 Broadway
Denver, CO 80203

Dear Ms. Peterson and the Review Committee:

Please be advised the Eads (CO) Chamber of Commerce fully supports the nomination of Eads School Gymnasium, the Eads Community Church and the Crow-Hightower House to the National Register of Historic Places. We also support the nomination of the Jackson Barn to the State Register of Historic Places.

The preservation of Eads' historic properties is of vital importance to our community. This has been previously demonstrated by the efforts of a local community group (initiated by high school students) that has been able to solicit and garner funds to renovate and rehabilitate the local theatre for use by our residents. This derelict building was an eyesore, but is now a viable town achievement.

Another example of the importance of preserving local history is in the restoration of the old bank building (and adjacent buildings) to house the offices of the Sand Creek Massacre Historic Site National Park Service Offices. This on-going project is a multi-organizational endeavor that will save and re-purpose historic buildings, stimulate the local economy and provide a much needed new home for NPS personnel.

With the support of the Kiowa County Commissioners, the Town of Eads, the Kiowa County Historic Preservation Commission, the Crow-Luther Cultural Events Center and scores of local citizens and volunteers, our community is trying to preserve its history. We are doing that by saving buildings, collecting oral histories (high school student project) and nominating register eligible properties to the National and State Registers of Historic Places.

The Eads Chamber of Commerce fully supports the nominations of all seven of the properties presented by the Kiowa County Historic Preservation Commission for your review.

Sincerely,



Dennis Pearson, President
Eads Chamber of Commerce



Richard Scott, Chairman
District 1, Sheridan Lake
William Koehler, Commissioner
District 2, Eads
Donald Oswald, Commissioner
District 3, Haswell
Peggy Dunlap, Administrator

1305 Goff Street, P.O. Box 100
Eads, CO 81036
Phone: 719-438-5810
Fax: 719-438-5615
E-mail:
commissioners@kiowacountycolo.com

March 14, 2013

Ms. Heather Peterson
National and State Register Historian
Office of Archaeology and Historic Preservation
History Colorado
1200 Broadway
Denver, Colorado 80203

Dear Ms. Peterson and the Review Committee:

The Kiowa County Board of Commissioners heartily endorses the nominations submitted to you by the Kiowa County Historic Preservation Commission for inclusion on the State and/or National Register of Historic Places. Kiowa County has a rich history that includes the Sand Creek Massacre National Historic Site and the site of the Towner Bus Tragedy (that we hope to one day see nationally recognized). Of the over 400 register eligible properties noted in the reconnaissance survey of the three incorporated towns in Kiowa County, the seven proposed to you are a representation of the county as a whole.

In the west end of Kiowa County, the Holly Hotel in Haswell is being nominated to the National Register of Historic Places. Also in Haswell, the Haswell Missouri-Pacific Railroad Depot is being nominated to the State Register. In the center of Kiowa County in Eads, the Eads School Gymnasium, the Eads Community Church (Methodist Church) and the Crow-Hightower House are being nominated to the National Register. The Jackson Barn in Eads is being nominated to the State Register. In the east end of Kiowa County in Sheridan Lake, the Sheridan Lake School (Kiowa Albright Memorial Center) is being nominated to the State Register.

These seven nominated properties demonstrate a small slice of the history of the county: its beginnings with the railroad connecting Kansas to the front range; a hotel for the weary travelers along the prairie miles; the schools built out of need for the education of area youth; the church as a community gathering place as well as a place of worship; the old barn as a testament to the agricultural industriousness of the pioneers; and the unique round house construction of the private residence that shows the ingenuity of the people. Although there are many register eligible properties in the three towns, these were good and worthy choices.

The Commissioners of Kiowa County thank you for your time and consideration of these nominated properties.

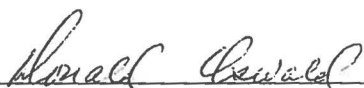
Sincerely,

A handwritten signature in cursive script, appearing to read "Dick Scott", written over a horizontal line.

Dick Scott, Chairman

A handwritten signature in cursive script, appearing to read "William Koehler", written over a horizontal line.

William Koehler, Commissioner

A handwritten signature in cursive script, appearing to read "Donald Oswald", written over a horizontal line.

Donald Oswald, Commissioner

**Town of Haswell
PO Box 70
Haswell, CO 81045**

March 25, 2013

Heather Peterson
National and State Register Historian
Office of Archaeology and Historic Preservation
History Colorado
1200 Broadway
Denver, CO 80203

Dear Ms. Peterson and the State Review Committee:

The Town of Haswell, Colorado enthusiastically endorses the nominations of the Holly Hotel in Haswell and the Haswell Missouri-Pacific Railroad Depot to the National and State Registers of Historic Places. Haswell is a very small farming community situated 20 miles west of Eads, Colorado on State Highway 96. This highway is a part of the Bi-Centennial Bikeway and is heavily used during the warm months for national and international bicyclists on their cross-county treks. Haswell has few amenities to offer these travelers who have many miles between rest stops. The Holly Hotel is being considered by its owners for rehabilitation as a bed and breakfast. Having it listed on the National Register would not only benefit the travelers but also would benefit the community as a whole by adding a viable and much needed business to the area.

The Haswell Missouri-Pacific Railroad Depot is an important structure in Kiowa County's history as the towns established in the county were founded and named by the rail company in the late 1800s. Much of Kiowa County's history can be attributed to the railroad. Most importantly, the Haswell Missouri-Pacific Railroad Depot is the only known depot of its kind remaining in Colorado.

Thank you for this opportunity to support all seven of the nominated properties in Kiowa County and most especially the Haswell nominees.

Sincerely,



Michelle A. Nelson
Mayor, Town of Haswell