

4. BENJAMIN D. GULLETT HOUSE
317 Main Street (Corner Main and Eutaw Avenue)

Mrs. Patty Borden Williamson
Greene County Nursing Home
Eutaw, Alabama 35462

Lots 91 and 92; Tax Map: 35-18-08-33-1-12-1 .25 acres (67' x 166')

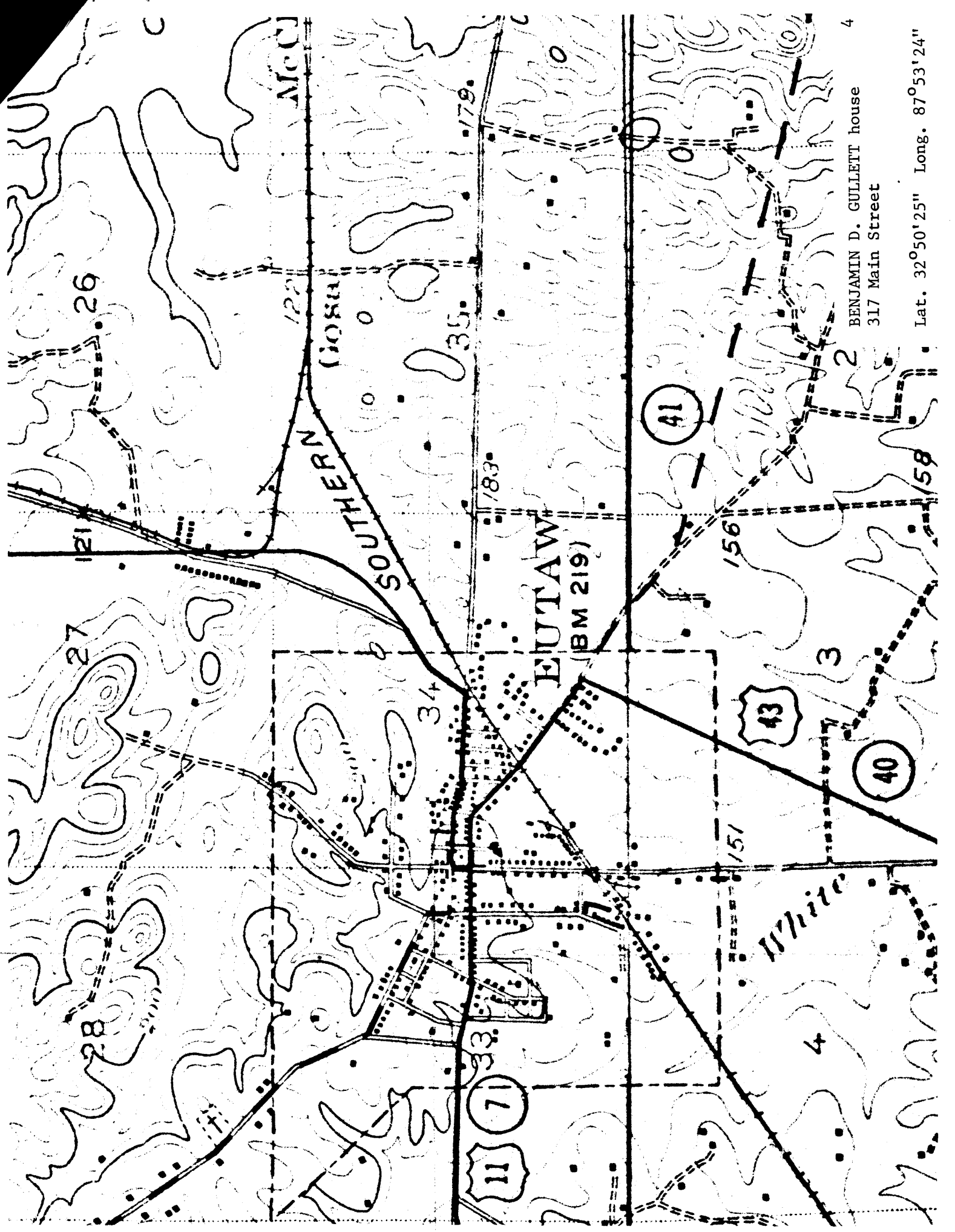
Latitude: 32° 50' 25"

Longitude 87° 53' 24"

c 1841 Date of construction Benjamin D. Gullett/Builder
c 1855-1911 rear ell addition
c 1920 upper balcony to portico and rearrangement of stairways

SIGNIFICANCE: Built shortly after the Asa White House (#13), the Gullett House is basically the same house type but is noted for its unusual floor plan - two single rooms, each with its own entrance and stair to the upper room - a holdover from earlier forms brought from the coastal states of the Atlantic. Originally the house had a full height veranda, which was converted to double galleries in the first part of this century.

DESCRIPTION: The original house of Benjamin D. Gullett was composed of four rooms, each about 16 feet square, arranged two above two. On each flank was an external chimney, and three rooms had fireplaces, that to the east on the second floor being without one. Each room had two openings in the front and side walls, including a door toward Main Street in the lower rooms, and one at the rear. There were two staircases, connecting each first-story room with the chamber above. They rose against the back wall several steps toward one another, utilized winder steps in the corners, and continued as straight flights against the center partition toward the front. Chairrailing encircled the rooms. The finest mantel is in the lower west room. It has molded pilaster shafts with plain plinths and imposts, and an advanced center block in the fascia, breakfront members above, though the shelf is straight, perhaps a replacement. The last juts out in front of the window frames to either side, but the elements go together gracefully. All windows have nine-over-nine-paned sashes. The house must have had a gallery across the back and a detached kitchen behind, which were replaced by the present ell.



McC

122

SOUTHERN RAILROAD

179

183

EUTAW (BM 219)

41

156

43

3

40

151

White

71

33

34

27

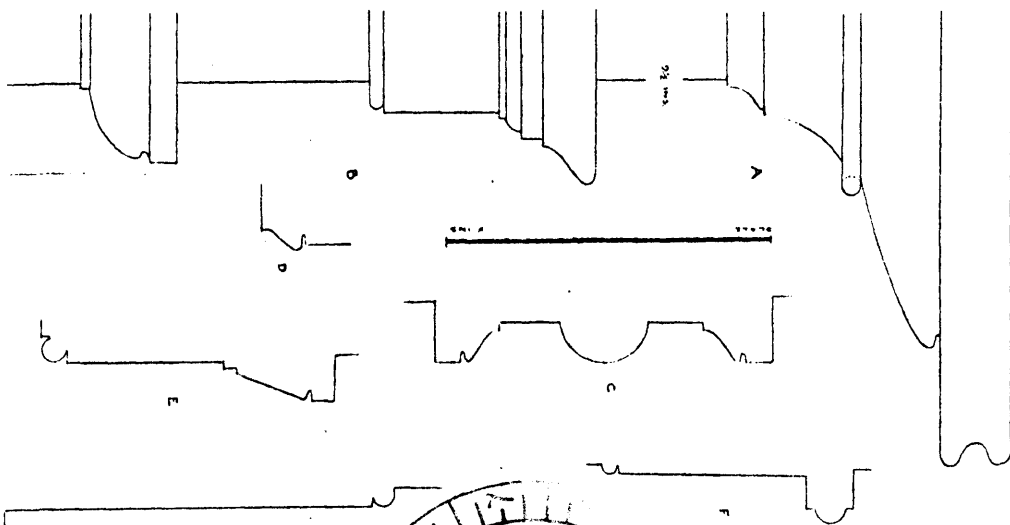
28

26

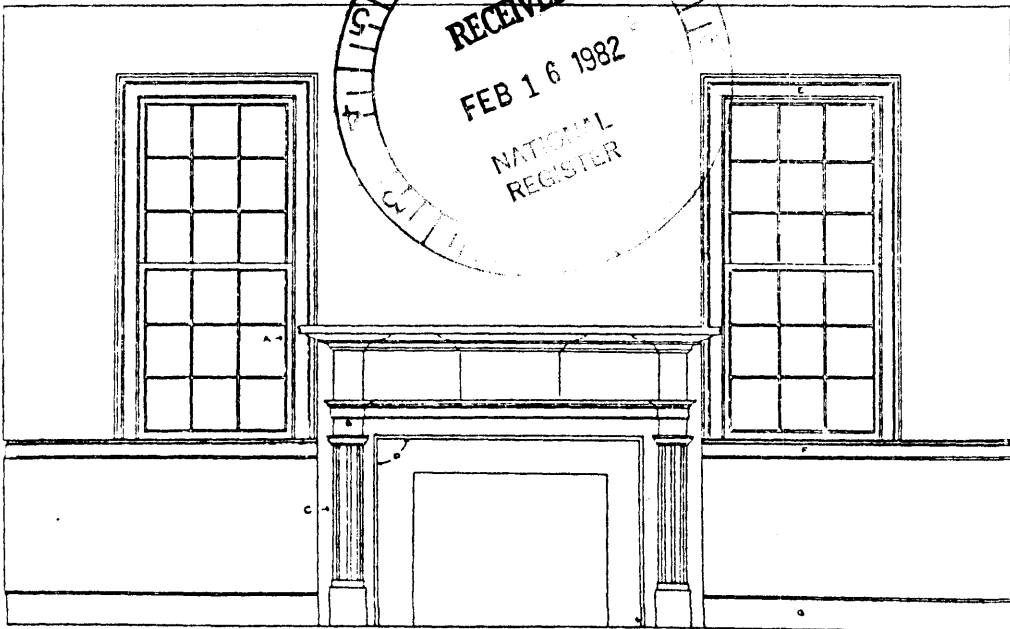
4

BENJAMIN D. GULLETT house
317 Main Street

Lat. 32°50'25" Long. 87°53'24"



RECEIVED
FEB 16 1982
NATIONAL
REGISTER



SCALE 1/8" = 1'-0"