

United States National Bank Building  
321 S. W. Sixth Avenue  
Portland, Multnomah County, Oregon

DESCRIPTION: HISTORIC VIEW LOOKING N.W.

HERITAGE INVESTMENT CORPORATION  
123 NW 2nd Avenue, Suite 200  
Portland, Oregon 97209

HISTORIC VIEWS - OREGON HISTORICAL SOCIETY NEG. #12974

PHOTO 1 of 30

1230 SW PARK AVENUE  
PORTLAND, OR 97205



United States National Bank Building  
321 S. W. Sixth Avenue  
Portland, Multnomah County, Oregon

DESCRIPTION: HISTORIC VIEW MAIN BANKING HALL

HERITAGE INVESTMENT CORPORATION  
123 NW 2nd Avenue, Suite 200  
Portland, Oregon 97209

HISTORIC VIEWS - OREGON HISTORICAL SOCIETY *NAC. # 15433*  
*1230 SW PARK AVENUE*  
*PORTLAND, OR 97205*  
PHOTO 2 of 30



United States National Bank Building  
321 S. W. Sixth Avenue  
Portland, Multnomah County, Oregon

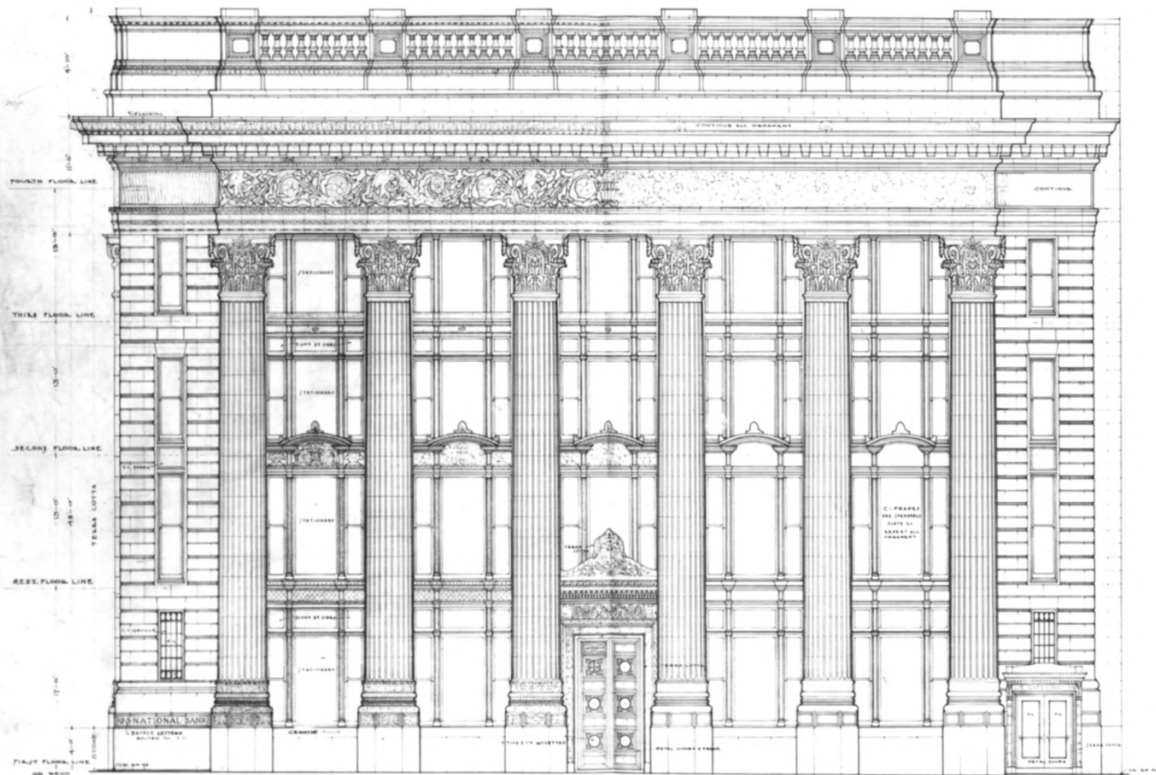
DESCRIPTION: HISTORIC VIEW - MAIN BANKING HALL

HERITAGE INVESTMENT CORPORATION  
123 NW 2nd Avenue, Suite 200  
Portland, Oregon 97209

HISTORIC VIEWS - OREGON HISTORICAL SOCIETY *NAG. NO. 53353*

PHOTO 3 of 30

*1230 SW PARK AVENUE  
PORTLAND, OR 97205*



SIXTH STREET ELEVATION  
 BUILDING FOR THE  
**UNITED STATES NATIONAL BANK**  
 SOUTH AND STARK STREETS  
 PORTLAND OREGON  
 A. E. BOYLE ARCHITECT  
 JOB UNDER DATE PRICE SHEET  
 237 1<sup>st</sup> JUNE 200 P. A. 8

United States National Bank Building  
321 S. W. Sixth Avenue  
Portland, Multnomah County, Oregon

DESCRIPTION: ORIGINAL WEST ELEVATION

HERITAGE INVESTMENT CORPORATION  
123 NW 2nd Avenue, Suite 200  
Portland, Oregon 97209

HISTORIC VIEWS - OREGON HISTORICAL SOCIETY NEG. # 62496

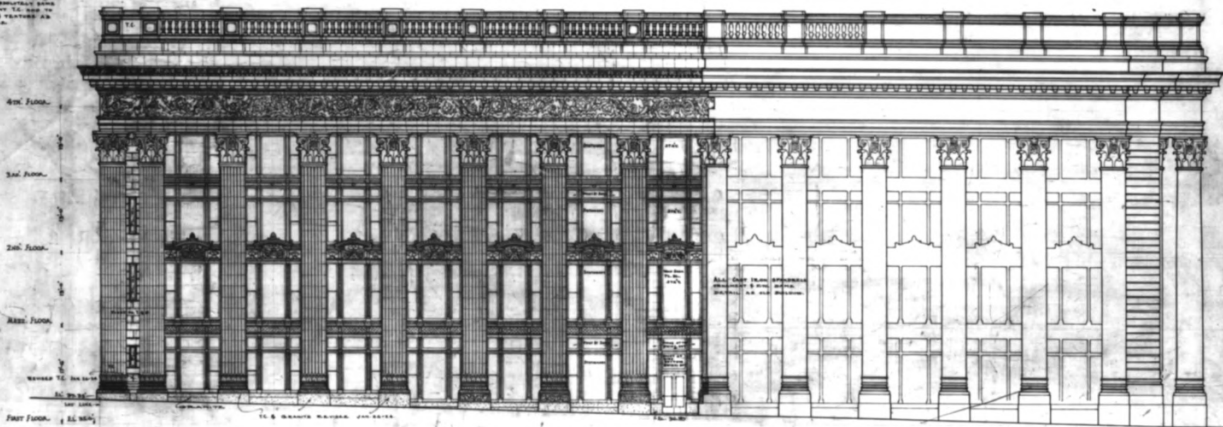
PHOTO 4 of 30

1230 SW PARK AVENUE  
PORTLAND, OR 97205



ALL NEW WORK SHOWN IN  
THIS DRAWING SHALL BE  
AS SHOWN UNLESS OTHERWISE  
NOTED. THE CONTRACTOR SHALL  
BE RESPONSIBLE FOR THE  
MATCH TO EXISTING WORK  
AS SHOWN.

NEW BUILDING OLD BUILDING  
ALL NEW WORK & FRAGMENT TO LEFT  
SHALL BE TO MATCH THAT ON OLD BUILDING



REVISIONS:  
NO. 1. ADD NEW WORK TO MATCH EXISTING WORK AS SHOWN & TO BE TO MATCH THAT ON OLD BUILDING.  
STARK STREET ENTRANCE BANK, BOSTON, APR. 22, 1914.

STARK ST. ELEVATION  
DESIGNED BY THE  
UNITED STATES  
NATIONAL BANK  
STARK & BROADWAY BOSTON, MASS.  
A. T. DOYLE ARCHITECT  
308-332 INDUSTRIAL BUILDING BOSTON, MASS.

United States National Bank Building  
321 S. W. Sixth Avenue  
Portland, Multnomah County, Oregon

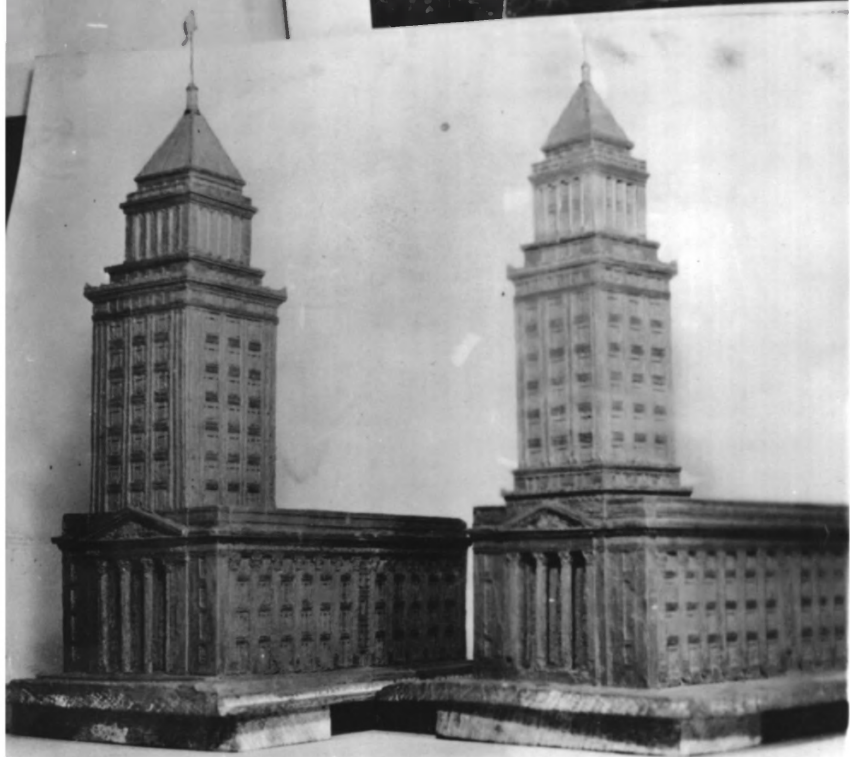
DESCRIPTION: SOUTH ELEVATION W/ ADDITION

HERITAGE INVESTMENT CORPORATION  
123 NW 2nd Avenue, Suite 200  
Portland, Oregon 97209

HISTORIC VIEWS - OREGON HISTORICAL SOCIETY *NEG.# 62498*

PHOTO 5 of 30

*1230 SW PARK AVENUE  
PORTLAND, OR 97205*



United States National Bank Building  
321 S. W. Sixth Avenue  
Portland, Multnomah County, Oregon

DESCRIPTION: PROPOSED ADDITIONS NEVER BUILT

( MODALS SHOW OFFICE TOWER WHICH WAS  
HERITAGE INVESTMENT CORPORATION      NAUMAN ARCHITECTS )  
123 NW 2nd Avenue, Suite 200  
Portland, Oregon 97209

HISTORIC VIEWS - OREGON HISTORICAL SOCIETY - NEG. # 14894  
1230 SW PARK AVENUE  
PORTLAND, OR 97205

PHOTO 4 of 30



United States National Bank Building  
321 S. W. Sixth Avenue  
Portland, Multnomah County, Oregon

DESCRIPTION: LOOKING NORTHWEST

HERITAGE INVESTMENT CORPORATION  
123 NW 2nd Avenue, Suite 200  
Portland, Oregon 97209

JERI TESS PHOTO - 1986

PHOTO 7 of 30



United States National Bank Building  
321 S. W. Sixth Avenue  
Portland, Multnomah County, Oregon

DESCRIPTION: EAST ELEVATION

HERITAGE INVESTMENT CORPORATION  
123 NW 2nd Avenue, Suite 200  
Portland, Oregon 97209

JERI TESS PHOTO - 1986

PHOTO 8 of 30





United States National Bank Building  
321 S. W. Sixth Avenue  
Portland, Multnomah County, Oregon

DESCRIPTION: EAST ELEVATION

HERITAGE INVESTMENT CORPORATION  
123 NW 2nd Avenue, Suite 200  
Portland, Oregon 97209

JERI TESS PHOTO - 1986

PHOTO 9 of 30



UNITED STATES NATIONAL BANK

United States National Bank Building  
321 S. W. Sixth Avenue  
Portland, Multnomah County, Oregon

DESCRIPTION: EAST ELEVATION - *SECONDARY ENTRANCE*

HERITAGE INVESTMENT CORPORATION  
123 NW 2nd Avenue, Suite 200  
Portland, Oregon 97209

JERI TESS PHOTO - 1986

PHOTO 10 of 30

321

U. S. NATIONAL BANK



United States National Bank Building  
321 S. W. Sixth Avenue  
Portland, Multnomah County, Oregon

*EAST*

DESCRIPTION: ~~WEST~~ ELEVATION - *CENTRAL ENTRANCE*

HERITAGE INVESTMENT CORPORATION  
123 NW 2nd Avenue, Suite 200  
Portland, Oregon 97209

JERI TESS PHOTO - 1986

PHOTO 17 of 30



United States National Bank Building  
321 S. W. Sixth Avenue  
Portland, Multnomah County, Oregon

DESCRIPTION: WINDOW DETAIL, *EAST ELEVATION*

HERITAGE INVESTMENT CORPORATION  
123 NW 2nd Avenue, Suite 200  
Portland, Oregon 97209

JERI TESS PHOTO - 1986

PHOTO 12 of 30





United States National Bank Building  
321 S. W. Sixth Avenue  
Portland, Multnomah County, Oregon

DESCRIPTION: LOOKING NORTHEAST - *WEST & SOUTH*  
*ELEVATIONS*

HERITAGE INVESTMENT CORPORATION  
123 NW 2nd Avenue, Suite 200  
Portland, Oregon 97209

JERI TESS PHOTO - 1986

PHOTO 13 of 30



L BANK

United States National Bank Building  
321 S. W. Sixth Avenue  
Portland, Multnomah County, Oregon

DESCRIPTION: CORNICE DETAIL < *WAST ALLOCATION*

HERITAGE INVESTMENT CORPORATION  
123 NW 2nd Avenue, Suite 200  
Portland, Oregon 97209

JERI TESS PHOTO - 1986

PHOTO 14 of 30



UNITED STATES NATIONAL BANK

United States National Bank Building  
321 S. W. Sixth Avenue  
Portland, Multnomah County, Oregon

DESCRIPTION: EXTERIOR DETAIL - *PENTAPLATE, WEST*  
*ELEVATION*

HERITAGE INVESTMENT CORPORATION  
123 NW 2nd Avenue, Suite 200  
Portland, Oregon 97209

JERI TESS PHOTO - 1986

PHOTO 15 of 30



United States National Bank Building  
321 S. W. Sixth Avenue  
Portland, Multnomah County, Oregon

DESCRIPTION: EXTERIOR DETAIL - *COFFERED CEILING*  
*RECESSED PORCH*  
*WEST ELEVATION*

HERITAGE INVESTMENT CORPORATION  
123 NW 2nd Avenue, Suite 200  
Portland, Oregon 97209

JERI TESS PHOTO - 1986

PHOTO 14 of 30





United States National Bank Building  
321 S. W. Sixth Avenue  
Portland, Multnomah County, Oregon

DESCRIPTION: WEST ELEVATION

HERITAGE INVESTMENT CORPORATION  
123 NW 2nd Avenue, Suite 200  
Portland, Oregon 97209

JERI TESS PHOTO - 1986

PHOTO 17 of 30



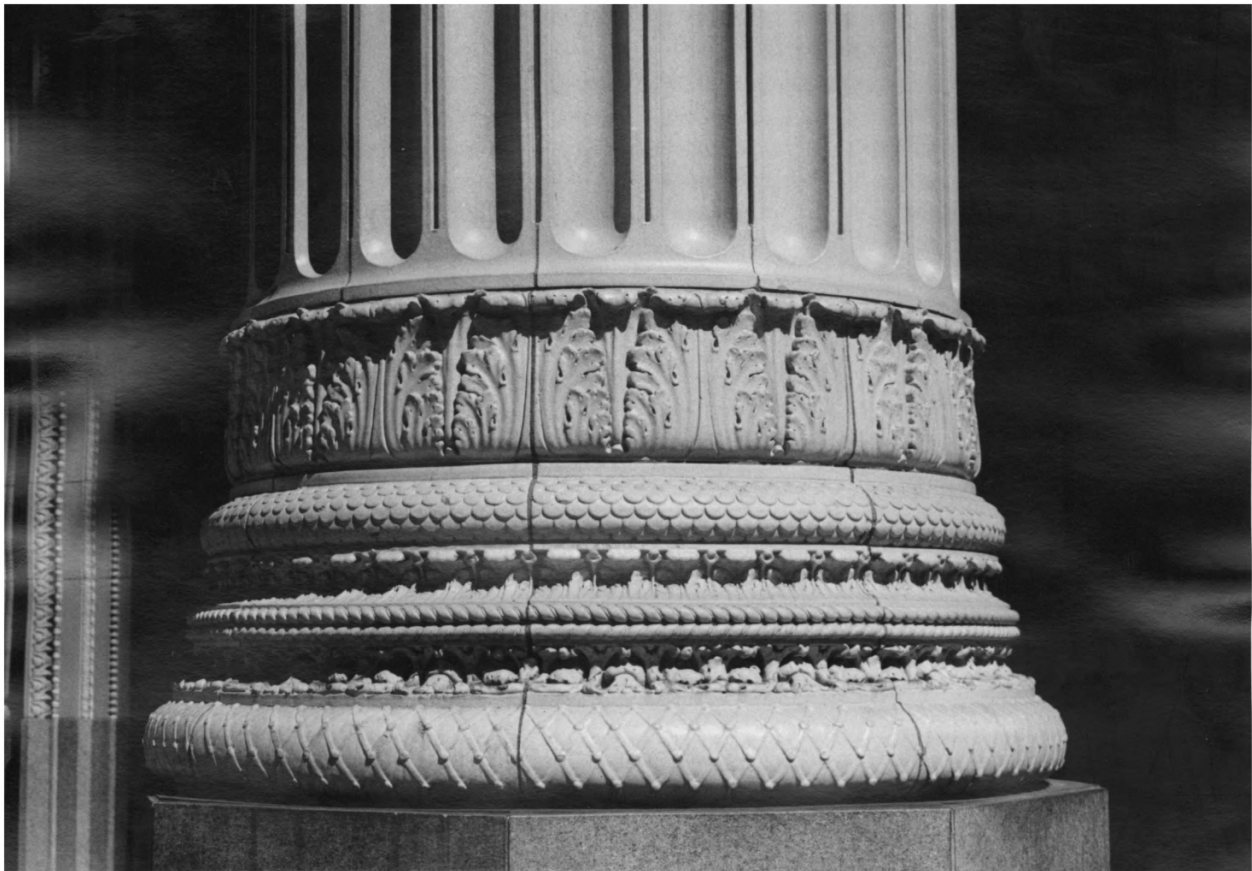
United States National Bank Building  
321 S. W. Sixth Avenue  
Portland, Multnomah County, Oregon

*WEST*  
DESCRIPTION: ~~EAST~~ ELEVATION

HERITAGE INVESTMENT CORPORATION  
123 NW 2nd Avenue, Suite 200  
Portland, Oregon 97209

JERI TESS PHOTO - 1986

PHOTO 18 of 30



United States National Bank Building  
321 S. W. Sixth Avenue  
Portland, Multnomah County, Oregon

DESCRIPTION: COLUMN DETAIL - *WEST ELEVATION*

HERITAGE INVESTMENT CORPORATION  
123 NW 2nd Avenue, Suite 200  
Portland, Oregon 97209

JERI TESS PHOTO - 1986

PHOTO 19 of 30



United States National Bank Building  
321 S. W. Sixth Avenue  
Portland, Multnomah County, Oregon

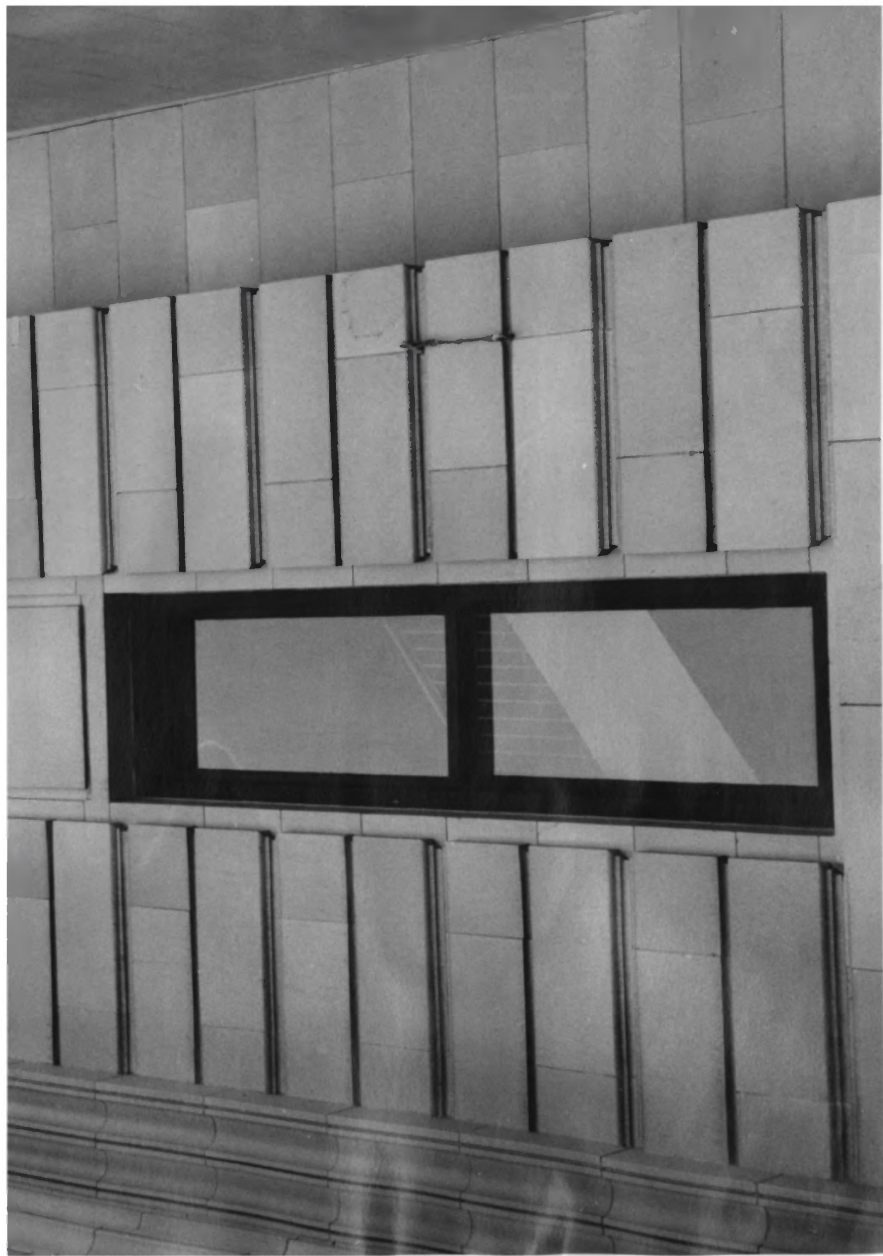
DESCRIPTION: COLUMN DETAIL - *WEST ELEVATION*

HERITAGE INVESTMENT CORPORATION  
123 NW 2nd Avenue, Suite 200  
Portland, Oregon 97209

JERI TESS PHOTO - 1986

PHOTO 20 of 30





United States National Bank Building  
321 S. W. Sixth Avenue  
Portland, Multnomah County, Oregon

DESCRIPTION: WINDOW DETAIL - SOUTH END, EAST FACADE

HERITAGE INVESTMENT CORPORATION  
123 NW 2nd Avenue, Suite 200  
Portland, Oregon 97209

JERI TESS PHOTO - 1986

PHOTO 21 of 30



United States National Bank Building  
321 S. W. Sixth Avenue  
Portland, Multnomah County, Oregon

DESCRIPTION: EXTERIOR DETAIL -

*BRONZE LIGHT  
FIXTURE*

*WEST POINT*

HERITAGE INVESTMENT CORPORATION  
123 NW 2nd Avenue, Suite 200  
Portland, Oregon 97209

JERI TESS PHOTO - 1986

PHOTO 22 of 30



United States National Bank Building  
321 S. W. Sixth Avenue  
Portland, Multnomah County, Oregon

DESCRIPTION: MAIN BANKING HALL - *LOOKING WEST*

HERITAGE INVESTMENT CORPORATION  
123 NW 2nd Avenue, Suite 200  
Portland, Oregon 97209

~~HISTORIC VIEWS - OREGON HISTORICAL SOCIETY~~ *1986*

PHOTO 23 of 30



SAFE DEPOSIT  
STUDENT LOANS  
LOWER LEVEL

United States National Bank Building  
321 S. W. Sixth Avenue  
Portland, Multnomah County, Oregon

DESCRIPTION: INTERIOR DETAIL - BANKING HALL  
LOOKING WEST

HERITAGE INVESTMENT CORPORATION  
123 NW 2nd Avenue, Suite 200  
Portland, Oregon 97209

~~HISTORIC VIEWS - OREGON HISTORICAL SOCIETY~~ 1986

PHOTO 24 of 30





United States National Bank Building  
321 S. W. Sixth Avenue  
Portland, Multnomah County, Oregon

DESCRIPTION: MAIN BANKING HALL - *LOOKING EAST*

HERITAGE INVESTMENT CORPORATION  
123 NW 2nd Avenue, Suite 200  
Portland, Oregon 97209

~~HISTORIC VIEWS - OREGON HISTORICAL SOCIETY~~ 1984

PHOTO 25 of 30



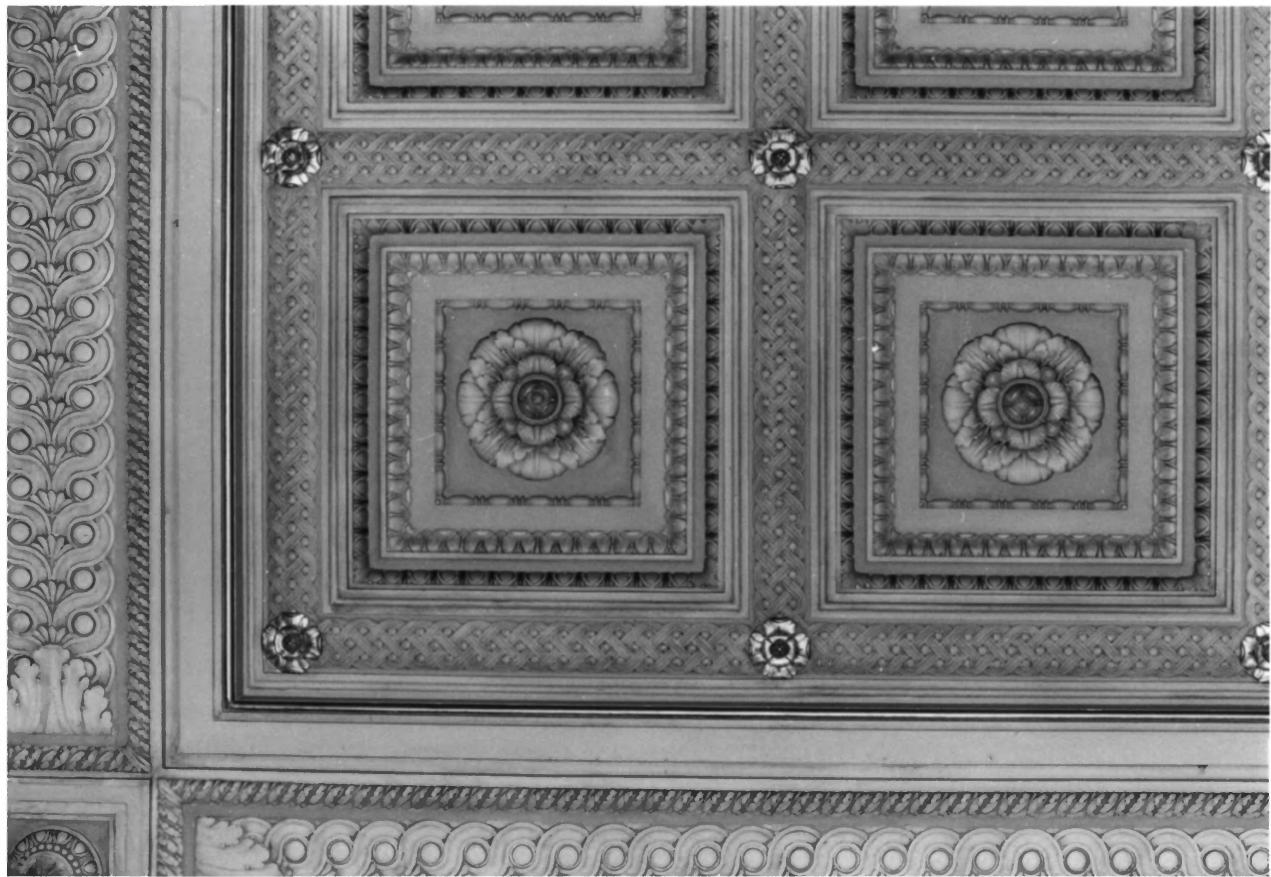
United States National Bank Building  
321 S. W. Sixth Avenue  
Portland, Multnomah County, Oregon

DESCRIPTION: INTERIOR DETAIL - *TYPICAL*  
*COLUMN CAPITAL*  
*MAIN BANKING HALL*

HERITAGE INVESTMENT CORPORATION  
123 NW 2nd Avenue, Suite 200  
Portland, Oregon 97209

~~HISTORIC VIEWS - OREGON HISTORICAL SOCIETY 1956~~

PHOTO 26 of 30



United States National Bank Building  
321 S. W. Sixth Avenue  
Portland, Multnomah County, Oregon

DESCRIPTION: CEILING DETAIL - *MAIN BANKING HALL*

HERITAGE INVESTMENT CORPORATION  
123 NW 2nd Avenue, Suite 200  
Portland, Oregon 97209

~~HISTORIC VIEWS - OREGON HISTORICAL SOCIETY~~ *1986*

PHOTO 27 of 30



United States National Bank Building  
321 S. W. Sixth Avenue  
Portland, Multnomah County, Oregon

DESCRIPTION: INTERIOR DETAIL - MAZZANINA BALUSTRADE  
MAIN BANKING HALL

HERITAGE INVESTMENT CORPORATION  
123 NW 2nd Avenue, Suite 200  
Portland, Oregon 97209

~~HISTORIC VIEWS - OREGON HISTORICAL SOCIETY~~ 1984

PHOTO 28 of 30





United States National Bank Building  
321 S. W. Sixth Avenue  
Portland, Multnomah County, Oregon

DESCRIPTION: BOARD ROOM ~~AREA~~ - WALNUT PANALING  
PIAN FACAD WITH  
HERITAGE INVESTMENT CORPORATION  
FLUTAN CLASSICAL  
123 NW 2nd Avenue, Suite 200  
PILASTERS  
Portland, Oregon 97209

~~HISTORIC VIEWS - OREGON HISTORICAL SOCIETY~~ 1986

PHOTO 29 of 30



United States National Bank Building  
321 S. W. Sixth Avenue  
Portland, Multnomah County, Oregon

DESCRIPTION: TYPICAL UPPER FLOOR INTERIOR

HERITAGE INVESTMENT CORPORATION  
123 NW 2nd Avenue, Suite 200  
Portland, Oregon 97209

~~HISTORIC VIEWS - OREGON HISTORICAL SOCIETY~~ 1986

PHOTO 30 of 30