



SWIFT  
&  
CO.

10259

KENTON COMMERCIAL HISTORIC DISTRICT  
Portland, Multnomah Co.

Swift & Company Plant, North Portland Harbor area  
(no longer extant)

Unknown photographer, c. 1930s

\* Negatives held by Oregon Historical Society  
1230 SW Park Ave.  
Portland, OR 97205

# 1 of 21

This photoprint is issued by the Oregon Historical Society with the understanding that it is not to be resold, or copied for resale, as a photoprint. It may be used in one publication, film or video production, or display. CREDIT TO

OREGON HISTORICAL SOCIETY

NEGATIVE NUMBER

01 10259 # 1744

IS REQUIRED, plus the name of the photographer, if named herewith, with any reproduction or display. User assumes all responsibility for possible copyright infringement and invasion of privacy arising from use of this reproduction.

Swift & Co. Plant



KENYON COMMERCIAL HISTORIC DISTRICT  
Portland, Multnomah Co.

Liza Mickle, photographer  
June 17, 2000

Negatives held by Bureau of Planning  
#2 of 21

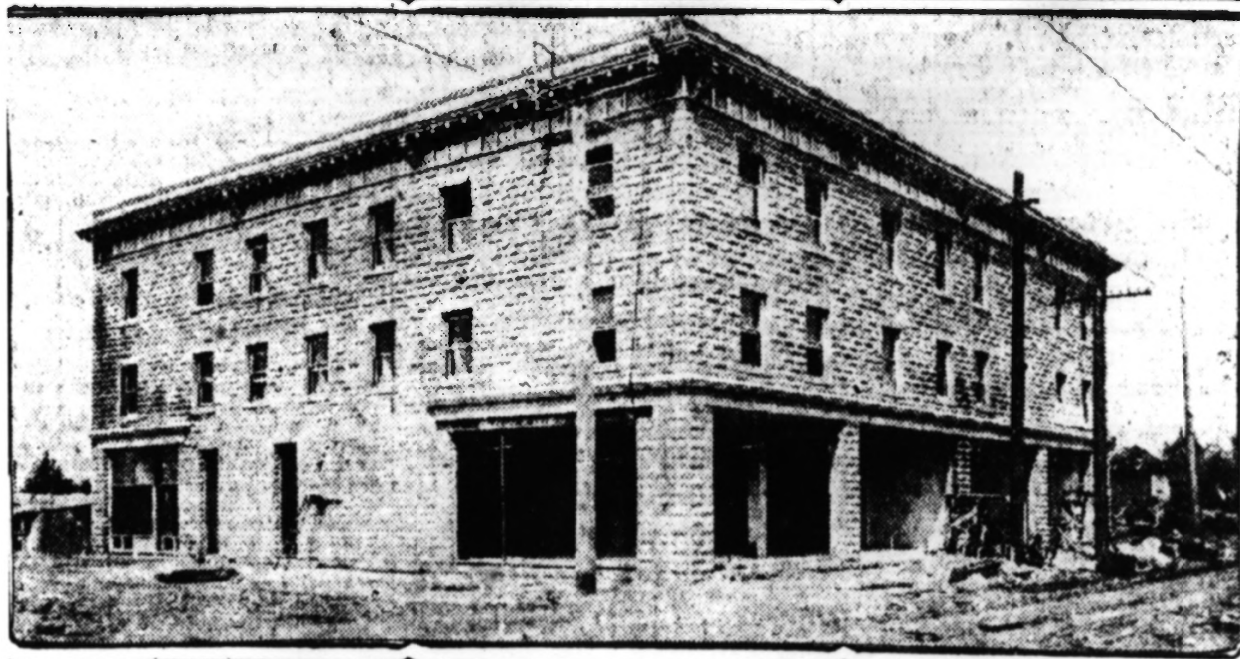


KENTON COMMERCIAL HISTORIC DISTRICT  
Portland, Multnomah Co.

Looking northwest at 2017 N. McClellan Street (Inv. #3).

Liza Mickett, photographer  
June 17, 2000

Negatives held by Bureau of Planning  
#3 06 21



BAILEY AND BRADFORD HOTEL BLDG

KENTON COMMERCIAL HISTORIC DISTRICT  
Portland, Multnomah Co.

Looking northwest at 2017 N. McClellan Street (Inv.#3).

This photoprint is issued by the Oregon Historical Society with the understanding that it is not to be resold, or copied for resale, as a photoprint. It may be used in one publication, film or video production, or display. CREDIT TO

OREGON HISTORICAL SOCIETY

NEGATIVE NUMBER

Orth: 84962

IS REQUIRED, plus the name of the photographer, if named herewith, with any reproduction or display. User assumes all responsibility for possible copyright infringement and invasion of privacy arising from use of this reproduction.

Baily + Bradford Hotel  
4/24/1910

Photographer  
Valenbom  
c. 1910\*

#4 of 21





KENTON COMMERCIAL HISTORIC DISTRICT  
Portland, Multnomah Co.

Looking northwest at 8329 N. Denver Avenue (Inv. #2).

Liza Mizelle, photographer  
June 17, 2000

Negatives held by Bureau of Planning  
#5 of 21



LIQUOR  
SUPPLIES  
ELECTRONICS

LIQUOR  
STORE

BREWERY

MIXERS  
GROCERIES

KELSEYS  
KORNER

MIXERS  
GROCERY

Various small signs and advertisements, including one with a house icon and the word "Tubers".

KENTON COMMERCIAL HISTORIC DISTRICT  
Portland, Multnomah Co.

Looking southwesterly at 8221-8237 N. Denver Ave. (Inv. #4)

Liza Mickle, photographer  
June 17, 2000

Negatives held by Bureau of Planning  
#6 of 21



KENTON SUPPLY

Kenton Commercial Historic District  
Portland, Multnomah Co.

Looking southeast at 8212-8216 N. Denver Avenue  
(Inv. #23, at left); 8202-8208 N. Denver Avenue  
(Inv. #22, at center); and 8130-8134 N. Denver  
Avenue (Inv. #19, at right).

Liza Mickle, photographer  
June 17, 2000

Negatives held by Bureau of Planning  
#7 of 21



BENTON SUPPLY

Apple Inn  
Bicycle

STOP

STOP

YIELD

KENTON COMMERCIAL HISTORIC DISTRICT  
Portland, Multnomah Co.

Looking northeast at 8202-8208 N. Denver Avenue  
(Inv. # 22, in foreground) and 8212-8216 N.  
Denver Avenue (Inv. # 23).

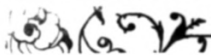
Liza Mickle, photographer  
June 17, 2000

Negatives held by Bureau of Planning  
# 8 of 21





Denver Avenue  
North from Schofield St.



KENTON COMMERCIAL HISTORIC DISTRICT  
Portland, Multnomah Co.

Denver Avenue looking northeast from N. Schofield  
Street (Inv. # 15, at right).

Photograph by  
Oregon Journal

1926\*

# 9 of 21

This photoprint is issued by the Oregon Historical Society with the understanding that it is not to be resold, or copied for resale, as a photoprint. It may be used in one publication, film or video production, or display. CREDIT TO

OREGON HISTORICAL SOCIETY

NEGATIVE NUMBER

Orth. 86882 # 1694

IS REQUIRED, plus the name of the photographer, if named herewith, with any reproduction or display. User assumes all responsibility for possible copyright infringement and invasion of privacy arising from use of this reproduction.

Denver Ave. north from Schofield  
St. ; Oregon Journal Photo, 1926



KENTON COMMERCIAL HISTORIC DISTRICT  
Portland, Multnomah Co.

Looking southwest at 8131-8139 N. Denver Avenue  
(Inv. # 8).

Liza Mickle, photographer  
June 17, 2000

Negatives held by Bureau of Planning  
#10 of 21



KENTON COMMERCIAL HISTORIC DISTRICT  
Portland, Multnomah Co.

Looking east from N. Kilpatrick Street at  
8202-8208 N. Denver Avenue (Inv. #22, at left)  
and 8130-8134 N. Denver Avenue (Inv. #19).

Liza Mizke, photographer  
June 17, 2000

Negatives held by Bureau of Planning  
#11 of 21



KENTON COMMERCIAL HISTORIC DISTRICT  
Portland, Multnomah Co.

Looking southeast from N. Kilpatrick Street at  
8130-8134 N. Denver Avenue (Inv. #19).

Liza Mickle, photographer  
June 17, 2000

Negatives held by Bureau of Planning  
#12 of 21





KENTON COMMERCIAL HISTORIC DISTRICT  
Portland, Multnomah Co.

Looking northeast at 8104-8108 N. Denver Avenue  
(Inv. #15).

Liza Mickle, photographer  
June 17, 2000

Negatives held by Bureau of Planning  
#13 of 21



ST 100

KENTON COMMERCIAL HISTORIC DISTRICT  
Portland, Multnomah Co.

Looking east from N. Schofield Street at  
8104-8108 N. Denver Ave. (Inv. # 15, at left) and  
8026 N. Denver Avenue (Inv. # 14).

Liza Miele, photographer  
June 17, 2000

Negatives held by Bureau of Planning  
# 4 of 21



THE KENWOOD



KENTON COMMERCIAL HISTORIC DISTRICT  
Portland, Multnomah Co.

Looking west from N. Kilpatrick Street at 8203-8207  
N. Denver Avenue (Inv. #7, at center right) and  
2044 N.

Kilpatrick Street  
(Inv. # 27, at  
center left).

Photographer  
unknown  
c. 1925 \*

#15 of 21

Kenton, ca. 1925; N. Kilpatrick St.  
looking west from Denver.

This photoprint is issued by the Oregon Historical Society with the understanding that it is not to be resold, or copied for resale, as a photoprint. It may be used in one publication, film or video production, or display. CREDIT TO

OREGON HISTORICAL SOCIETY

NEGATIVE NUMBER

Orth 54365 #1694

IS REQUIRED, plus the name of the photographer, if named herewith, with any reproduction or display. User assumes all responsibility for possible copyright infringement and invasion of privacy arising from use of this reproduction.



KENTON COMMERCIAL HISTORIC DISTRICT  
Portland, Multnomah Co.

Looking northwest at 8203-8207 N. Denver Avenue  
(Inv. #7).

Liza Mickle, photographer  
June 17, 2000

Negatives held by Bureau of Planning  
#16 of 21





THE WORLD FAMOUS **KENTON** .. CLUB

World Famous  
**KENTON CLUB**  
MIKE THE DJ IS BACK  
FRI & SAT NIGHT

THE WORLD FAMOUS  
**KENTON CLUB**

DANCE  
BAR  
BOTTLES  
MUSIC

KENTON COMMERCIAL HISTORIC DISTRICT  
Portland, Multnomah Co.

Looking northwest at 2025 N. Kilpatrick Street (Inv. #5  
in foreground) and 8203 N. Denver Avenue (Inv. #7).

Liza Mickle, photographer  
June 17, 2000

Negatives held by Bureau of Planning  
#17 of 21

*Lambeth*

**LAUNDRY MAT**



KENTON COMMERCIAL HISTORIC DISTRICT  
Portland, Multnomah Co.

Looking northwest at 8103-8107 N. Denver Avenue  
(Inv. #10, in foreground) and 8111-8119 N. Denver Avenue  
(Inv. #9).

Lizi Mickle, photographer  
June 17, 2000

Negatives held by Bureau of Planning  
#18 of 21



MAGNET AND SON BODY & PAINT 269-9851



6035

KENTON COMMERCIAL HISTORIC DISTRICT  
Portland, Multnomah Co.

Looking southwest at 8035 N. Denver Avenue  
(l.w. #11, at right) and 8007-8015 N. Denver Avenue  
(l.w. #12, at center).

Liza Mickle, photographer  
June 17, 2000

Negatives held by Bureau of Planning  
#19 of 21



GARAGE  
SALE



KENTON COMMERCIAL HISTORIC DISTRICT  
Portland, Multnomah Co.

Looking northeast from N. Watts Street at 8007-8015  
N. Denver Avenue (Inv. #12).

Liza Mickle, photographer  
June 17, 2000

Negatives held by Bureau of Planning  
# 20 of 21

Kodak  
SAFETY FILM





KENTON COMMERCIAL HISTORIC DISTRICT  
Portland, Multnomah Co.

Looking southwest at 2026 N. Kilpatrick Street  
(Inv. # 26, at left) and 2044 N. Kilpatrick Street  
(Inv. # 27).

Liza Mickle, photographer  
June 17, 2000

#21 of 24