



PHOTO 1

Marina Park National

Register District

Bridgeport, Connecticut

PARK AVENUE (west side)

LOOKING SOUTH FROM

ATLANTIC STREET

C. Brilvitch Photo

September 1978

Negative on file Conn.

Historical Commission



PHOTO 2

Marina Park National

Register District

Bridgeport, Connecticut

LEWIS B. CURTIS HOUSE

250 Waldemere Avenue

C. Brilvitch Photo

September 1978

Negative on file Conn.

Historical Commission



PHOTO 3

Marina Park National

Register District

Bridgeport, Connecticut

WILLIAM A. GRIPPIN HOUSE

82 Marina Park

C. Brilvitch Photo

October 1978

Negative on file Conn.

Historical Commission



PHOTO 4

Marina Park National

Register District

Bridgeport, Connecticut

WILLIAM J. GRIPPIN HOUSE

85 Park Avenue

C. Brilvitch Photo

September 1978

Negative on file Conn.

Historical Commission



PHOTO 5

Marina Park National
Register District
Bridgeport, Connecticut
GEORGE W. WHEELER HOUSE
115 Park Avenue
C. Brilvitch Photo
September 1978
Negative on file Conn.
Historical Commission



7

PHOTO 6

Marina Park National

Register District

Bridgeport, Connecticut

WILLIAM N. BEARDSLEY HOUSE

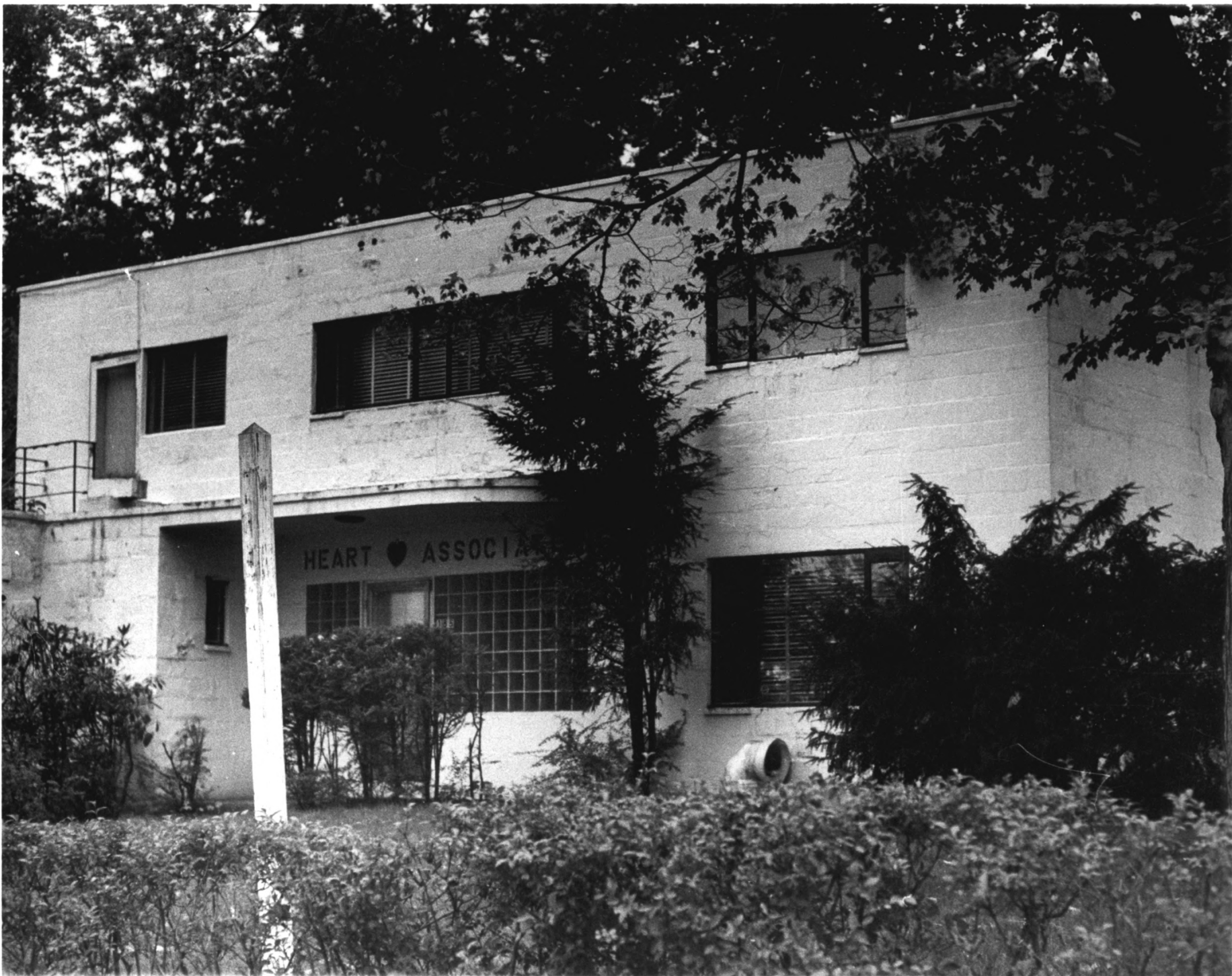
135 Park Avenue

C. Brilvitch Photo

September 1978

Negative on file Conn.

Historical Commission



HEART ♥ ASSOCIATION

PHOTO 7

Marina Park National
Register District
Bridgeport, Connecticut

ALBERT J. ERSLEW HOUSE

185 Park Avenue

C. Brilvitch Photo

September 1978

Negative on file Conn.

Historical Commission



PHOTO 8

Marina Park National

Register District

Bridgeport, Connecticut

LAVINIA L. PARMLY HOUSE

219 Park Avenue

North side and rear eleva-
tions

C. Brilvitch Photo

September 1978

Negative on file Conn.

Historical Commission



8

BRYANT HALL
UNIVERSITY of MASSACHUSETTS
CAREER PLANNING CENTER
B. PLACER

PHOTO 9

Marina Park National

Register District

Bridgeport, Connecticut

WALDO C. BRYANT HOUSE

277 Park Avenue

C. Brilvitch Photo

September 1978

Negative on file Conn.

Historical Commission



University
of
Bridgeport
ADMISSIONS
OFFICE
at Wahlstrom Library

SERVICIOS LEGALES
FAIRFIELD COUNTY
LEGAL SERVICES

ENTRANCE

PHOTO 10

Marina Park National

Register District

Bridgeport, Connecticut

JOHN G. HOWLAND HOUSE

285 Park Avenue

C. Brilvitch Photo

September 1978

Negative on file Conn.

Historical Commission