

Crossing Cannon Ball River, Time of High Water, New England, N. D.



Riverside
New England, North Dakota

Photo credit: Unknown

Date of Photo: circa 1890s

Location of negative: State Historical Society of North Dakota
North Dakota Heritage Center
Bismarck, ND 58505

New England, North Dakota, view from south, southwest.
Original hotel building is on left-side of photograph.
Livery barn associated with the original hotel is just
left of the hotel.

Photo 1 of 8

Mckenzie's Hotel, New England, N. D.



Riverside
New England, North Dakota

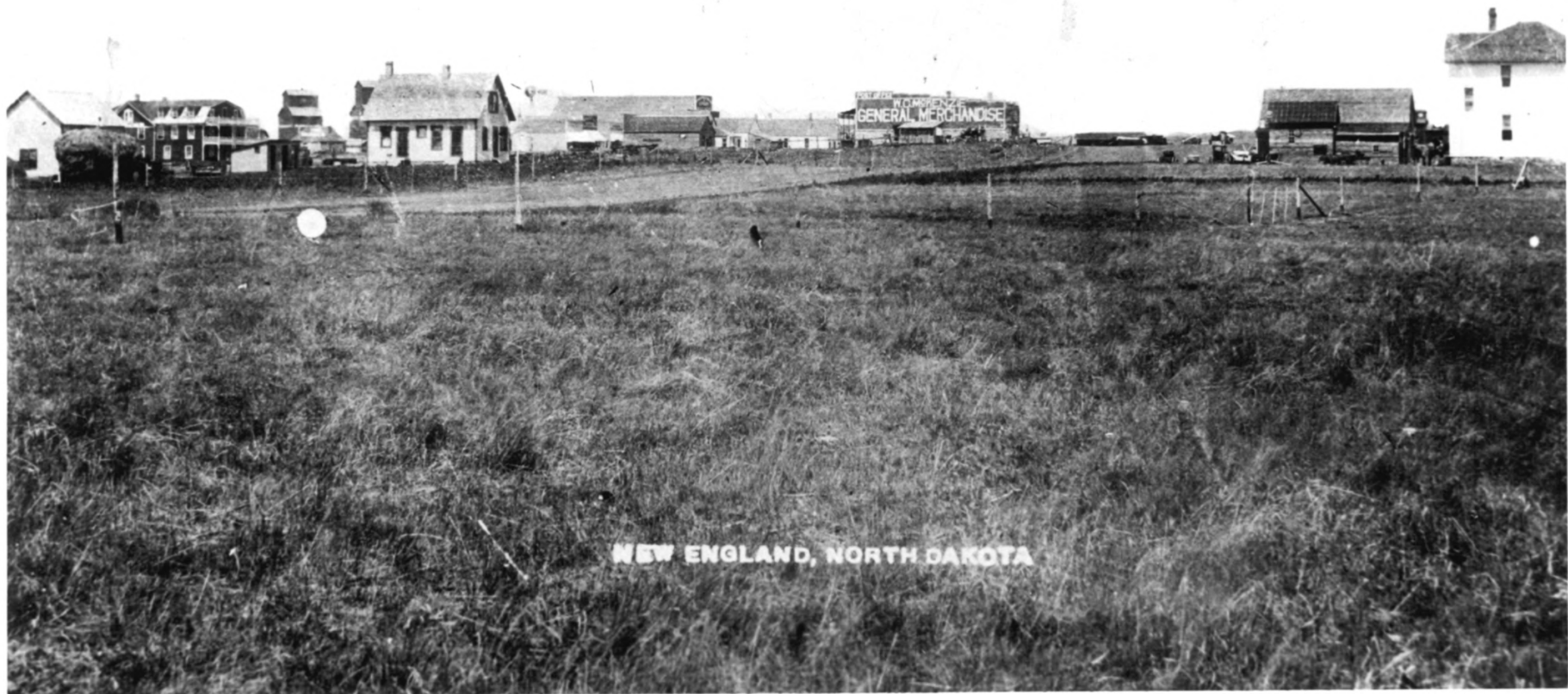
Photo credit: Unknown

Date of photo: circa 1900s - 1910s

Location of negative: State Historical Society of North Dakota
North Dakota Heritage Center
Bismarck ND 58505

McKenzie's Hotel after west addition had been constructed.
View from northeast.

Photo 2 of 8



NEW ENGLAND, NORTH DAKOTA

Riverside

New England, North Dakota

Photo credit: Unknown

Date of photo: circa 1920s - 1930s

Location of negative: State Historical Society of North Dakota
North Dakota Heritage Center
Bismarck, ND 58505

New England, view from southeast. Note McKenzie Hotel on far left, and McKenzie's General Store near center of photo.

Photo 3 of 8



Riverside
New England, North Dakota

Photo credit: Bonnie J. Halda, Historical Architect

Date of photo: September 8, 1982

Location of negative: State Historical Society of North Dakota
North Dakota Heritage Center
Bismarck, ND 58505

View from southeast.

Photo 4 of 8



Riverside
New England, North Dakota

Photo credit: Bonnie J. Halda, Historical Architect

Date of photo: September 8, 1982

Location of negative: State Historical Society of North Dakota
North Dakota Heritage Center
Bismarck, ND 58505

View from northeast.

Photo 5 of 8



Riverside

New England, North Dakota

Photo credit: Bonnie J. Halda, Historical Architect

Date of photo: September 8, 1982

Location of negative: State Historical Society of North Dakota
North Dakota Heritage Center
Bismarck, ND 58505

View from southwest.

Photo 6 of 8

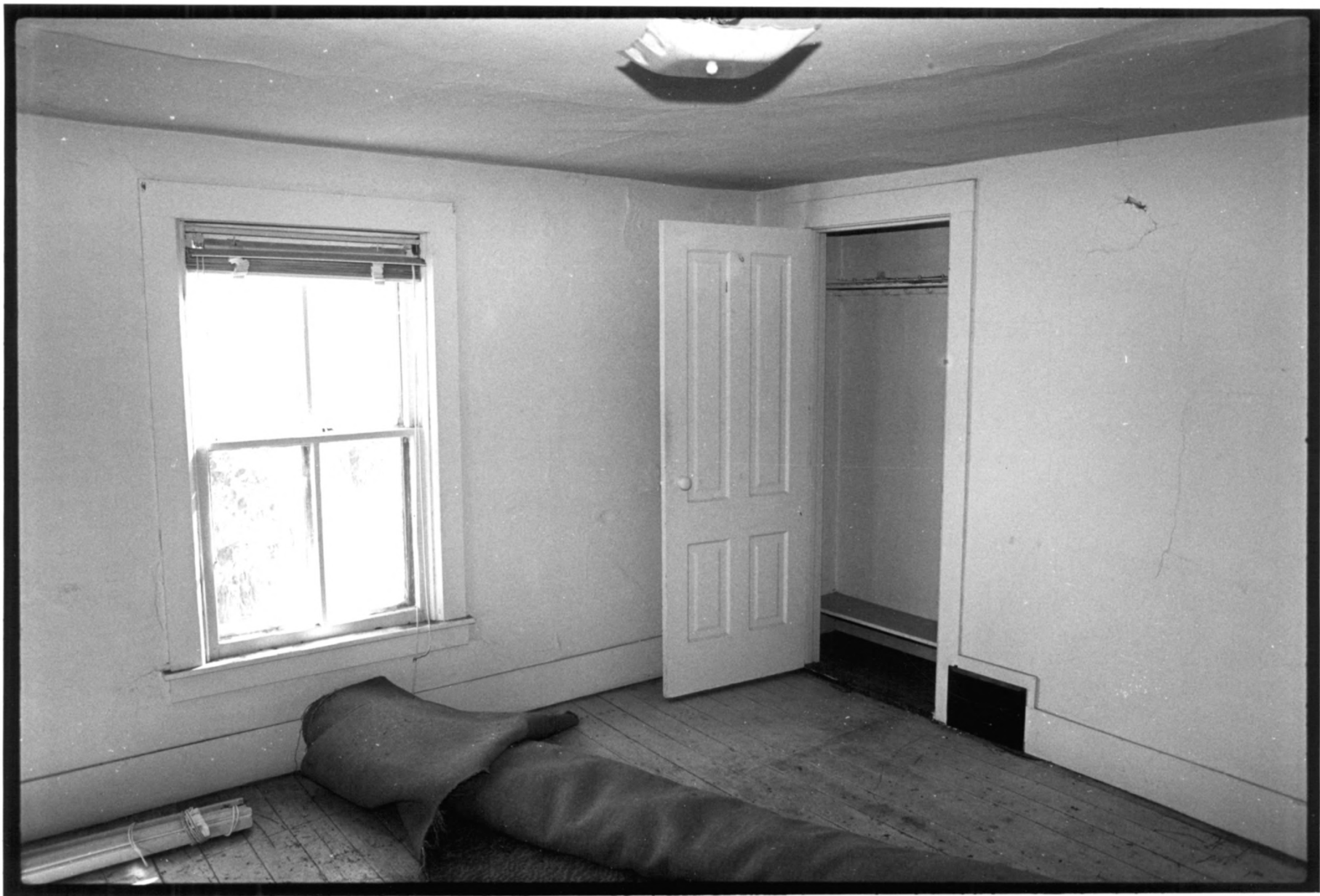


Riverside
New England, North Dakota

Photo credit: Bonnie J. Halda, Historical Architect
Date of photo: September 8, 1982
Location of negative: State Historical Society of North Dakota
North Dakota Heritage Center
Bismarck, ND 58505

Interior, first floor.

Photo 7 of 8



Riverside
New England, North Dakota

Photo credit: Bonnie J. Halda, Historical Architect

Date of photo: September 8, 1982

Location of negative: State Historical Society of North Dakota
North Dakota Heritage Center
Bismarck, ND 58505

Interior, typical hotel room on second floor.

Photo 8 of 8