

18. cont.:

jointed on ends, simple joints on front;
(boussoirs ^{inferior} concealed). Had beaded frames w.
ovolo trim (remains on front doorway), now replaced
w narrow mitred corner frames w square sills;
6 panel front door, 4 pane transom; 1 attic window
W. end, 2 on E.

Interior has fine paneled fireplace walls with
presses, ovolo trim, shelf mantels; chair rail gone;
hall (S. room) has open dog leg stair w turned balusters,
flat landing, in NE corner of room, opposite front
door (as at McMillan Hse 118, only reversed)

(photo 2) The rear half of the roof is extended to cover 2 rooms (1/2 story)
on the N side of the house making a salt box shape; the
NW room is stone, the NE room frame, each w chimney
(one covered). The stone room was built very early, if not
at same time as house - the mantle is the same period as
the rest of stone house. The gable roof porch outside these
rooms spans the center bay only, has chamfered posts,
square baluster railing and brackets (added?) [Questions:
End windows added? Was rear porch moved from front?
Is frame room an enclosed porch?]

(photo 1) On W. end of the rear stone room is an early brick
wing which contains an enclosed corner stair in SE corner.
An L-shaped porch on front of wing and W end of house has
been enclosed. One story hipped roof porch (20th C) built
across S front of stone house replaces a 1 bay gabled entrance
porch w chamfered posts; new porch hides boussoirs.
Window frames changed mid 19th C. House once painted red.

(photo 4) House located above Salt River W of house. Large
stone walled spring on river bank. Yard contains old
smoke house, 2 chicken houses, board & batten quarters;
early barn E of house.

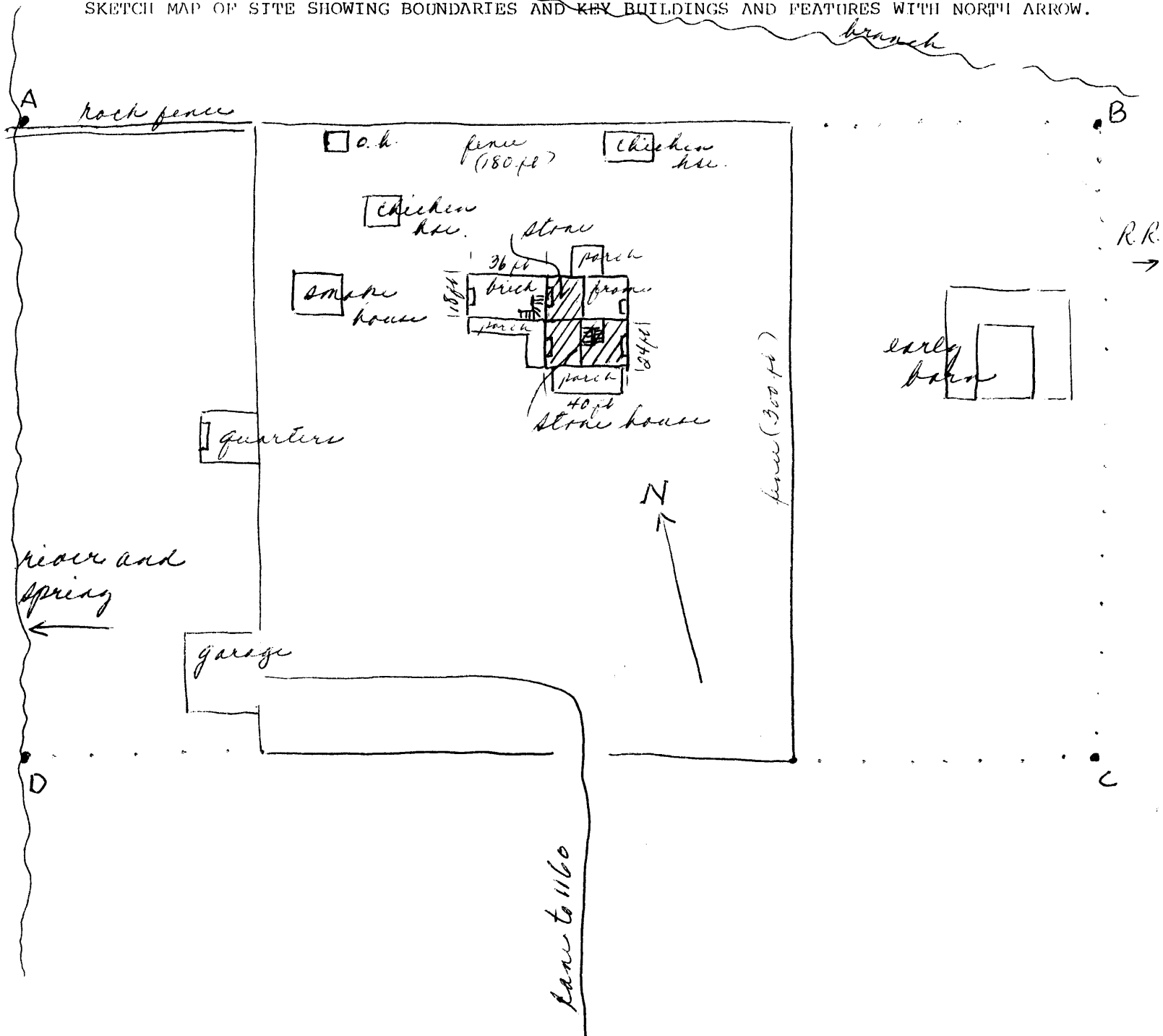
19. cont.:

was inhabited for several years by settlers in the
region. Survived Indian attacks. House built on NE corner
of station site; modeled after family home in Armagh, Ireland.

VERBAL BOUNDARY DESCRIPTION & JUSTIFICATION

Beginning at A at a rock fence at the river bank, thence with rock fence and along wire fence behind house and adjoining line for a total of 600 ft E to B, thence at right angle 300 ft S to C, thence parallel to C-B 650 ft^W to the river, thence with river 300 ft W to the beginning, containing the stone house and (river)

SKETCH MAP OF SITE SHOWING BOUNDARIES AND KEY BUILDINGS AND FEATURES WITH NORTH ARROW.



additions, chicken houses, smoke house, quarters,
spring and early barn - about 4 ¹/₃ acres.