

397



United States Department of the Interior
National Park Service

National Register of Historic Places Registration Form

This form is for use in nominating or requesting determinations for individual properties and districts. See instructions in National Register Bulletin, *How to Complete the National Register of Historic Places Registration Form*. If any item does not apply to the property being documented, enter "N/A" for "not applicable." For functions, architectural classification, materials, and areas of significance, enter only categories and subcategories from the instructions.

1. Name of Property

Historic name Kacirek-Voita General Store
Other names/site number F. E. Voita General Store, Weston General Store, SD18-029
Name of related multiple property listing n/a
(Enter "N/A" if property is not part of a multiple property listing)

2. Location

Street & Number 250 N. Elm St.
City or town Weston State Nebraska County Saunders
Not for publication Vicinity

3. State/Federal Agency Certification

As the designated authority under the National Historic Preservation Act, as amended, I hereby certify that this nomination request for determination of eligibility meets the documentation standards for registering properties in the National Register of Historic Places and meets the procedural and professional requirements set forth in 36 CFR Part 60.

In my opinion, the property meets does not meet the National Register Criteria. I recommend that this property be considered significant at the following level(s) of significance: national statewide local

Applicable National Register Criteria: A B C D

 SHPO/Director 05-22-2014
Signature of certifying official/Title Date
Nebraska State Historical Society
State or Federal agency/bureau or Tribal Government

In my opinion, the property meets does not meet the National Register criteria.


Signature of Commenting Official Date

Title State of Federal agency/bureau or Tribal Government

4. National Park Service Certification

I, hereby, certify that this property is:

- entered in the National Register.
- determined eligible for the National Register.
- determined not eligible for the National Register.
- removed from the National Register.
- other, (explain): _____

 7-8-2014
Signature of Keeper Date of Action

Kacirek-Woita General Store
Name of Property

Saunders Co., Nebraska
County and State

5. Classification

Ownership of Property (Check as many boxes as apply)

- Private
- Public-local
- Public-state
- Public-federal

Category of Property (Check only **one** box)

- Building(s)
- District
- Site
- Structure
- Object

Number of Resources within Property (Do not include previously listed resources in the count.)

Contributing	Noncontributing	
1		Buildings
		Sites
		Structures
		Objects
1		Total

Number of contributing resources previously listed in the National Register 0

6. Function or Use

Historic Functions (Enter categories from instructions.)

COMMERCE/TRADE: Department store

Current Functions (Enter categories from instructions.)

WORK IN PROGRESS

7. Description

Architectural Classification (Enter categories from instructions.)

Late Victorian: Commercial Vernacular

Materials (enter categories from instructions.)

Principal exterior materials of the property: WOOD: Weatherboard

Kacirek-Woita General Store

Saunders Co., Nebraska

Name of Property**County and State****Description**

Summary Paragraph (Briefly describe the general characteristics of the property, such as its location, type, style, method of construction, setting, size, and significant features. Indicate whether the property has historic integrity.)

The Kacirek-Woita General Store is a two-story, wood-framed commercial building with corner entry dating to 1894 located at the intersection of Elm and Pike Streets in the center of Weston, Saunders County, Nebraska, population 324 (2010). The wood-clad building preserves its late-19th century commercial façade, including its carved wooden storefront, wooden triangular pediments over the second story windows, and elaborate wooden cornice brackets. A secondary storefront for the store's grocery is located towards the rear of the building along the Elm Street elevation. Adjacent to this a wood paneled door provides access to the store's freight elevator. The interior features a large main retail space with wood floors, built-in display shelves, a suspended gallery, and office. A smaller grocery is located to the rear of the building, with an office space and storage room located on the second floor. An 1895 hand-powered freight elevator allowed the movement of goods from the basement to the grocery and upstairs storeroom. The store is one of the few surviving buildings of Weston's commercial center and possesses high integrity in both its exterior and interior.

Narrative Description (Describe the historic and current physical appearance and condition of the property. Describe contributing and noncontributing resources if applicable.)

Exterior

The Kacirek-Woita General Store is a two-story, wood-framed, two-part commercial block located on a corner lot at the intersection of Elm and Pike Streets in central Weston village. The building was constructed for use as a store by the firm of Kacireck, Woita, and Co. in 1894. Completed in 1895, the building remained in use as a combined general and grocery store under several owners until it closed in 1971 with the death of its last proprietor, Frank E. Woita. The store rests on a mortared stone foundation and is clad in horizontal wood siding. The roof is a low pitched asphalt roll roof that is hipped on the northwest end and gabled on the southwest end. To the rear of the building is a one-story, wood framed shed addition. The addition dates to early in the building's history, as it appears in historic photographs and is clad in identical siding.

The primary façade faces northwest onto Pike street and consists of a four bay, wood storefront on the ground floor. Fluted wooden columns with medallion detailing divide the bays, with the medallions corresponding to the intersection with the transom bar. A basic cornice runs along the top of the storefront. Wood panel bulkheads are located along the base of the storefront. Currently, the window openings are covered with plywood sheets, but the original glass display windows and transoms are preserved and visible from the interior. The second story has two symmetrically arranged, one-over-one double hung sash windows over the two central bays of the façade. The windows have a combination straight and triangular milled wood pediment. The wood bead board cornice is supported by elaborate milled wood cornice brackets aligned with the columns below.

The main entrance to the store is through a recessed, angled corner entry facing the intersection of Elm and Pike streets. Entry is through a glazed wood panel door. A single one-over-one double hung sash window with a combination straight and triangular milled wood pediment is located above the door on the second story. The door, display windows, transom windows, and the second-story window are covered in plywood, which preserves the original glass and woodwork underneath.

Kacirek-Woita General Store

Saunders Co., Nebraska

Name of Property**County and State**

The long secondary façade facing Elm Street is an asymmetrical arrangement of storefronts and windows. At the northern end, adjacent to the recessed corner entry, is a one bay continuation of the primary wooden storefront. At the southern end, adjacent to the shed addition, is a three bay wood storefront that corresponds to the store's grocery. This storefront is less elaborate than the primary storefront, as the columns lack fluting and decorative medallions, but includes identical wood panel bulkheads and a basic wood cornice. A glazed wood panel door is located in the recessed entry. Plywood covers the window openings, which have mostly lost their original glazing or preserve shattered remnants of glass. Located to the left of the storefront is a wood panel door providing access to the freight elevator shaft. The doorway has a combination straight and triangular milled wood pediment. Three irregularly spaced windows are located on the second story level, with one centered over the grocery storefront. All the windows are one-over-one double hung sash, with combination straight and triangular pediments, and are covered in plywood. Milled wood brackets are regularly spaced along the length of the cornice. A small, hipped roof head house rises above the roofline in line with the elevator access door.

The rear, wood framed shed addition is clad in the same horizontal wood siding as the main store building. The addition dates to early in the history of the building, as it does not appear in a circa 1900 ceramic commemorative plate of the building, but it does appear in a circa 1920 photograph of the store (figure 1 and 2). A wood parapet screens the corrugated metal roof from view from the street. A non-historic modern aluminum garage door replaced the original three-bay entry and display windows that appeared in historic photos and in survey photos as late as 1980. Adjacent to the garage door is a modern panel door. Above the shed addition, on the second story of the gable end of the store building, are two symmetrically placed one-over-one double hung sash windows with combination straight and triangular milled wood pediments.

The northeastern elevation has four irregularly spaced windows, one at the ground floor level and the other three at the second floor level. All of the windows are one-over-one double hung sash. The second story windows have milled wood triangular pediments. The ground floor window has a straight lintel. The rear shed addition also has a wood panel door on this elevation. All but one of the windows are covered in plywood.

Interior

The Kacirek-Woita General Store's interior possesses a high level of design and material integrity. The store preserves its organization of two specialized retail spaces, storage rooms, and offices. It preserves its original shelves, hardware, elevator, safe, and electrical system as well. Material changes are limited to repairs of a basement foundation wall and of several of the second story walls.

The general store retail space occupies the front two-thirds of the building. It is two stories in height, with a second-floor gallery running around all four walls. The floor is wood plank and the ceiling is painted wood bead-board. The long northeastern and southwestern sides retain their original milled wood, grain-painted shelving. The northeastern shelves also feature a sliding ladder on rollers for access to the upper shelves. The shelving's molding and posts possess the same decoration as the exterior storefront. Along the front of the room a display shelf with a wood batten fascia provides space for the display of goods that would be visible through the display windows, which mostly retain their original glass and wood framing. Two of the transom windows also retain their historic green cloth shades. In the eastern corner of the space there is an office space, separated from the sale floor by waist-high wood partitions and a carved wood door frame. The office has a built-in desk, one exterior and two interior windows, and a historic safe with the name Kacirek, Woita & Co. painted across the top. The interior retains its circa-1921 lighting fixtures, which are suspended from the ceiling on cords. A large floor grate to the rear of the space connects with the basement furnace, providing central heat to the store. A vent control is located on the nearby post at the end of the stairs leading to the second floor.

Kacirek-Woita General Store

Saunders Co., Nebraska

Name of Property

County and State

The rear third of the main building is a separate, single story retail space that corresponded to the historic grocery and which is entered through the secondary shop front on the Pike Street façade. The floor is wood plank and the ceiling is painted bead board. Three of the walls feature built in shelves and drawers for the display of merchandise. The molding profiles and millwork again reflect the designs used on the storefront. A small window on the north side of the space provides access to the office located in the general store space. Adjacent to the window is a wood panel door providing access to the basement.

Between the grocery space and the general store space is a three story freight elevator, which allows the movement of goods from the basement to the second story. A double wood panel door provides access from the grocery space to the freight elevator. The shaft is clad in wood batten board on the exterior and wood plank on the interior. The elevator platform measures five feet by five feet six inches, and rides along wooden rails. The 1895 iron mechanism is hand powered via ropes and is located under the head house on the second floor level.

A batten board clad staircase at the rear of the general store space leads to the second floor gallery. The wood gallery is suspended from the ceiling by metal poles which are painted to resemble wood. A low turned wood baluster is located along the edge of the gallery. Built in shelves are located along the north wall. Shelves are missing from the south wall, which is also missing its plaster leaving the wood lathe exposed. The remaining walls are wallpaper on plaster. The sills of the second floor windows are even with the gallery floor.

Two rooms are accessed from the second floor gallery and are located above the grocery space. The northeastern room has plank floors, a wood bead board ceiling, and historic wallpaper on three walls. The door, door frame, windows, and window frames are all grain painted. The door retains its historic iron hardware. The southeast room has wood plank walls and floors, and an unpainted wood bead board ceiling. The elevator head frame is located in the northwestern corner of the room, where two of the shaft walls are clad in horizontal bead board. Adjacent to the elevator is the historic electrical junction box. The brick chimney rises through this room as well. Repair work is evident in the southwest wall, where some of the historic wood planks were removed to facilitate the replacement of the wall's top plate.

The basement is accessed from the grocery space via a staircase. A small window at the top of the staircase allows individuals in the general store office to see into the space. The basement is dirt floored and the walls are made of roughly hewn stone blocks, except for the northeast wall, which was replaced with concrete block. Wood posts in the center of the space provide support for the joists of the floor above. Adjacent to the stair and underneath the general store space is the historic coal fired furnace.

Kacirek-Woita General Store
Name of Property

Saunders Co., Nebraska
County and State

8. Statement of Significance

Applicable National Register Criteria

(Mark "X" in one or more boxes for the criteria qualifying the property for National Register listing.)

- A** Property is associated with events that have made a significant contribution to the broad patterns of our history.
- B** Property is associated with the lives of persons significant in our past.
- C** Property embodies the distinctive characteristics of a type, period, or method of construction or represents the work of a master, or possesses high artistic values, or represents a significant and distinguishable entity whose components lack individual distinction.
- D** Property has yielded, or is likely to yield information important in prehistory or history.

Criteria Considerations

(Mark "X" in all the boxes that apply.)

Property is:

- A** Owned by a religious institution or used for religious purposes.
- B** Removed from its original location.
- C** A birthplace or a grave.
- D** A cemetery.
A reconstructed building, object, or structure.
- E** A commemorative property.
- G** Less than 50 years of age or achieved significance within the past 50 years.

Areas of Significance

(Enter categories from instructions.)

COMMERCE

ARCHITECTURE

Period of Significance

1894-1964

Significant Dates

1894 Construction

1921 Electric lighting installed

Significant Person

(Complete if Criterion B is marked above.)

Cultural Affiliation

Czech-Americans

Architect/Builder

Kacirek-Woita General Store

Saunders Co., Nebraska

Name of Property

County and State

Statement of Significance Summary Paragraph (Provide a summary paragraph that includes level of significance, applicable criteria, justification for the period of significance, and any applicable criteria considerations.)

Constructed by Kacirek, Woita & Co. in 1894, the Kacirek-Woita Store is the only surviving general store in Weston village. The building is eligible for nomination to the National Register of Historic Places under Criterion A at the local level of significance, for its association with Weston's commercial growth and role as a center for Czech immigrants. It is also eligible at the local level under Criterion C as it is a rare intact example of once common Victorian vernacular commercial architecture. The all-wood general store maintains not only its historic envelope with its Victorian ornamentation, but its internal organization and ornamentation as well.

Narrative Statement of Significance (Provide at least **one** paragraph for each area of significance.)

Criterion A: Commerce

The F.E. Woita store in Weston is one of the few remaining commercial buildings remaining in Weston that is associated with the highpoint of the village's commercial activity. The building is representative of the once common general store. Constructed at the highpoint of the village's economic prosperity, the Kacirek-Woita General Store was open for business under a succession of owners from 1894 until 1971, whereupon it was sold and used as a storage space. The store was spared destruction by fire or redevelopment, allowing it to remain an intact representation of a late 19th century general store. The building's period of significance dates from 1894 until 1964, during which time the building housed a prosperous mercantile business in Weston that weathered multiple economic downturns.

Founded in 1877 on a branch of the Union Pacific Railroad in Chapman Township, Weston developed into a commercial center for local farmers, many of whom were immigrants to the district from Bohemia, German principalities, and Sweden in the 1870s and 1880s. The majority of the farms surrounding Weston were owned by Czech immigrants or their children; many of these families also owned businesses in Weston, including the Kris, Novak, Pop, and Woita families.¹ Weston was home to multiple Bohemian congregations by the turn of the 20th century, including Catholics, Lutherans, Methodists, and Presbyterians.² In addition to Czechs, Weston was a center as well for Swedish immigrants, who constructed a Baptist Church in the town in 1889.³ The village grew as a result of expanded settlement as the railroads sold thousands of acres of land in the vicinity in the 1880s—The Union Pacific Railroad in 1884 alone sold 4 million acres of land statewide.⁴ Farmers produced more during the 1880s as a result of improved farm machinery and favorable weather, which led to increased business for merchants who supplied farmers and purchased their produce.⁵ By 1890, Weston was home to thirty five different businesses, including five general stores which catered to the town's 350 residents and to neighboring farmsteads.⁶ Four years later, when the present Kacirek-Woita General Store was constructed, the town supported forty-two businesses, four general stores, and a population of between 425 and 500 individuals.⁷

¹ *Illustrated Farm Atlas of Saunders County* (Brown-Scoville Publishing Co.: Des Moines, IA 1907) p. 35.

² "Weston—Saunders County" *Virtual Nebraska: Nebraska...Our Towns*. University of Nebraska, Lincoln, Accessed March 5, 2014, www.casde.unl.edu/history/counties/saunders/weston/index.php.

³ *Ibid.*

⁴ James C. Olson and Ronald C. Naugle, *History of Nebraska*, Third Edition (University of Nebraska Press: Lincoln, NE 1997)p. 200.

⁵ *History of Nebraska*, 200-204.

⁶ *Nebraska State Gazetteer and Business Directory 1890*, pp. 546, 658.

⁷ *Nebraska State Gazetteer and Business Directory 1894-95* pp. 605-606, 741.

Kacirek-Woita General StoreSaunders Co., Nebraska**Name of Property****County and State**

The partnership that constructed the Kacirek-Woita General Store was formed during this period of economic growth for Weston. James Kacirek, the senior partner of Kacirek, Woita, and Co., immigrated to the United States from Bohemia in 1880 and worked as a farmer and as a member of a lumber business.⁸ In 1891 he entered into a partnership with an established Weston merchant, Anton Chapek.⁹ This partnership was the seed for the formation of Kacirek, Woita and Company. Chapek sold his interest later that year to James Woita, who had worked for two other leading store owners in Weston: James Keay, one of the first merchants in Weston, and Frank Hakel, the owner of the largest general store in Weston at the time.¹⁰ A third partner, Willard Hagenbuck, worked with the firm from 1891 until 1896, when he retired and sold his interest to John Woita, older brother of James Woita.¹¹ Kacirek, Woita, and Hagenbuck operated their store in Weston for three years before constructing the current Kacirek-Woita General Store on the corner of Elm and Pike in 1894.¹² The store was built on a prime location, at the intersection of the village's two primary streets, next to the village bandstand, and only a block from the railroad.¹³ The store's corner location and exterior organization with a large wood storefront along the short side of the building and a separate grocery storefront on the long side mirrored Frank Hakel's larger 1881 Weston Mercantile Store, which was located across the railroad tracks at the intersection of Vine and Elm streets (figure 3). The Kacirek and Woita store was quite prosperous at this time and the proprietors even had commemorative plates with an image of the store produced in Germany for sale.

Kacirek, Woita and Company opened at the height of Weston's prosperity and population. However, the economic conditions of the mid-1890s slowed the town's growth to almost a standstill. Kacirek and Woita stopped offering credit at this time and switched to an all-cash business.¹⁴ In 1902, thirty-six businesses were located in Weston, but the number of general stores declined to just two: Frank Hakel's General Store and the Kacirek and Woita Brothers Store.¹⁵ By 1907, the number of businesses decline further to twenty-nine.¹⁶ The town rebounded slightly in the years prior to World War I, and by 1913 the town had two banks, three churches, an opera house, three general stores, and a total of thirty businesses.¹⁷ In 1915 the town added a new brick school and a municipal sewer system, and by 1920 several businesses in the village center had constructed brick buildings, including the Weston Bank.¹⁸ The rear shed addition to the Kacirek-Woita General Store dates to this time period. In 1921, electricity finally reached Weston as a line was completed from the county seat of Wahoo, seven miles to the east. The last major modification of the Kacirek-Woita General Store dates to this time, as it was outfitted with a then modern electrical lighting system.

The Kacirek-Woita General Store changed owners several times during the three decades prior to the Great Depression. John Woita died in 1903, leaving his share in the store to his wife, Marie. James Kacirek sold his interest in the store to James Woita in 1904 to open his own store in the village of Touhy, six miles to the southwest. In 1908, James Woita sold his majority stake in the store to Frank Virgl, who became the sole owner of the store by 1911 when John Woita's widow and Joseph Staska, Virgl's business partner, sold their remaining stakes to Frank Virgl. Virgl had the store electrified, and

⁸ *Biographical Record of Saunders and Sarpy Counties* (Biographical Publishing Co.: Chicago, 1900) p. 182.

⁹ *Ibid.*

¹⁰ *Ibid.*

¹¹ *Ibid.*, pp. 181-182.

¹² *Biographical Record*, 182; *Wahoo New Era*, June 14, 1894.

¹³ *Illustrated Farm Atlas of Saunders County* (Brown-Scoville Publishing Co.: Des Moines, IA 1907) p. 33.

¹⁴ *Wahoo New Era*, December 19, 1895.

¹⁵ *Nebraska State Gazetteer and Business Directory*, 1902-03, pp 566, 707.

¹⁶ *Nebraska State Gazetteer and Business Directory*, 1907-08, pp. 961, 1231.

¹⁷ *Nebraska State Gazetteer and Business Directory*, 1913, pp. 779-780, 1038.

¹⁸ "Weston—Saunders County" *Virtual Nebraska: Nebraska...Our Towns*. University of Nebraska, Lincoln, Accessed March 5, 2014, www.casde.unl.edu/history/counties/saunders/weston/index.php.

Kacirek-Woita General Store

Saunders Co., Nebraska

Name of Property

County and State

operated the store until 1929, when he transferred the store to Frank E. Woita, the son of John Woita, for one dollar.¹⁹ Frank Woita operated the store until his death in 1971, when it was sold and became Lumir Maly Storage.²⁰

Criterion C: Architecture

The Kacirek-Woita General Store is an unusually intact example of the once common Victorian-era General Store. While it presents itself as a two-part commercial block building with separate floors for commerce and living, the two story store interior is devoted entirely to retail space or storage. The building preserves its wooden storefronts, which were once common among rural stores, as they provided the appearance of urban cast iron storefronts at a reduced price. The Kacirek-Woita General Store's storefront is an excellent example of this type, with ornamented wooden columns featuring a variety of details including fluting, medallions, and ogee molding that calls to mind similarly detailed cast iron fronts commonly found in the time period.

More significant is the intact interior which preserves most of its original features and materials, including surface treatments and detailing. The surviving shelving, doors, and window frames were all grain painted to simulate more valuable materials. The store retains much of its historic wallpaper, especially on the second floor. In addition, the building's 1920s electrical system is operable, and many of the lights retain their historic hardware including original glass globes. Other significant elements include the store safe and working freight elevator.

The store clearly reads as a successful late 19th century commercial building. It is the only surviving intact general store building in Weston. The largest general store building in Weston, Frank Hake's Weston Merchandise Company, is no longer extant and its lot northwest of the Kacirek-Woita General Store is now occupied by a residence at the intersection of Elm and Vine Streets. A fire in 1975 destroyed a large block of commercial buildings in the center of the village, including the former Tony Kriz general merchandise store. One remaining store building, located southwest of the Kacirek-Woita General Store at Pike and Ash streets, reads as a commercial building but lacks integrity and has been extensively modified.

¹⁹ *Abstract of Title, Lot 5, Block 10 in the First Addition to Weston, Saunders County, Nebraska*, no 22.

²⁰ Pokorny, Virginia A., *"Uptown, Downtown—All Around Our Town": Depicting the History and Progress of Weston Nebraska*, (Weston Centennial Historical Committee: Weston, NE, 1976), p. 27.

Kacirek-Woita General Store
Name of Property

Saunders Co., Nebraska
County and State

9. Major Bibliographic References

Bibliography (Insert bibliography here – cite the books, articles and other sources used in preparing this form.)

Abstract of Title, Lot 5, Block 10 in the First Addition to Weston, Saudners County, Nebraska.

Biographical Record of Saunders and Sarpy Counties. Biographical Publishing Co.: Chicago, 1900.

Nebraska State Gazetteer and Business Directory, 1890-91, 1894-95, 1902-03, 1907-08, 1913

Olson, James C. and Ronald C. Naugle. *History of Nebraska.* Third Edition. University of Nebraska Press: Lincoln, NE 1997.

Pokorny, Virginia A., *“Uptown, Downtown—All Around Our Town”: Depicting the History and Progress of Weston Nebraska,* Weston Centennial Historical Committee: Weston, NE, 1976.

“Weston—Saunders County” *Virtual Nebraska: Nebraska...Our Towns.* University of Nebraska, Lincoln, Accessed March 5, 2014, www.casde.unl.edu/history/counties/saunders/weston/index.php.

Wahoo New Era. Wahoo, Nebraska. 1892-1896.

Previous documentation on file (NPS):

- preliminary determination of individual listing (36 CFR 67 has been requested)
- previously listed in the National Register
- previously determined eligible by the National Register
- designated a National Historic Landmark
- recorded by Historic American Buildings Survey #
- recorded by Historic American Engineering Record #
- recorded by Historic American Landscape Survey #

Primary location of additional data:

- State Historic Preservation Office
- Other State agency
- Federal agency
- Local government
- University
- Other (Name of repository)

Historic Resources Survey Number (if assigned): SD18-029

10. Geographical Data

Acreage of property Less than one USGS Quadrangle Wahoo West

(Use either the UTM system or latitude/longitude coordinates. Delete the other.)

Latitude/Longitude Coordinates

Datum if other than WGS84: _____

- | | | | | |
|----|----------|-------------------|-----------|--------------------|
| 1. | Latitude | <u>41.191825°</u> | Longitude | <u>-96.743302°</u> |
| 2. | Latitude | _____ | Longitude | _____ |
| 3. | Latitude | _____ | Longitude | _____ |
| 4. | Latitude | _____ | Longitude | _____ |

Kacirek-Woita General Store Saunders Co., Nebraska
Name of Property **County and State**

Verbal Boundary Description (Describe the boundaries of the property.)

The property is located on Lot 5, Block 10, Weston First Addition.

Boundary Justification (Explain why the boundaries were selected.)

The boundary corresponds to the legal description of the property and includes the area historically associated with the property.

11. Form Prepared By

name/title Ruben A. Acosta, National Register and CLG Coordinator
organization Nebraska State Historical Society date March 27, 2014
street & number 1500 R Street PO Box 82554 telephone 402-471-4775
city or town Lincoln state NE zip code 68501
email ruben.acosta@nebraska.gov

Additional Documentation

Submit the following items with the completed form:

- **Maps:** A **USGS map** or equivalent (7.5 or 15 minute series) indicating the property's location.
- **Sketch map** for historic districts and properties having large acreage or numerous resources. Key all photographs to map.
- **Additional items:** (Check with the SHPO for any additional items.)

Kacirek-Woita General Store

Saunders Co., Nebraska

Name of Property

County and State

Photographs

Submit clear and descriptive photographs. The size of each image must be 1600x1200 pixels (minimum), 3000x2000 preferred, at 300 ppi (pixels per inch) or larger. Key all photographs to the sketch map. Each photograph must be numbered and that number must correspond to the photograph number on the photo log. For simplicity, the name of the photographer, photo date, etc. may be listed once on the photograph log and doesn't need to be labeled on every photograph.

Photo Log

Name of Property Kacirek-Woita General Store

City or Vicinity Weston County Saunders State Nebraska

Photographer Ruben A. Acosta Date Photographed Feb. 14, 2014

Description of Photograph(s) and number, include description of view indicating direction of camera.

1. Principle storefront and corner entry, Kacirek-Woita Store. View E.
2. ¾ view, exterior Kacireck-Woita Store. View S.
3. ¾ view, grocery storefront and rear addition. View N.
4. Retail space interior with office and gallery. View E.
5. View of storefront from interior. View W.
6. Detail, display shelves, 1st floor. View N.
7. Detail, store safe. View E.
8. View of grocery storefront from interior. View SW.
9. Grocery retail space and shelves. View E.
10. Freight elevator, 2nd floor. View W.
11. 2nd floor display shelves. View NW.
12. 2nd floor storeroom. View N.
13. 2nd floor office. View N.
14. Detail, door hardware, grain painting, wallpaper. View NW.
15. Basement. View E.

Paperwork Reduction Act Statement: This information is being collected for applications to the National Register of Historic Places to nominate properties for listing or determine eligibility for listing, to list properties, and to amend existing listings. Response to this request is required to obtain a benefit in accordance with the National Historic Preservation Act, as amended (16 U.S.C.460 et seq.).

Estimated Burden Statement: Public reporting burden for this form is estimated to average 100 hours per response including time for reviewing instructions, gathering and maintaining data, and completing and reviewing the form. Direct comments regarding this burden estimate or any aspect of this form to the Office of Planning and Performance Management, U.S. Dept. of the Interior, 1849 C. Street, NW, Washington, DC.

Kacirek-Woita General Store
Name of Property

Saunders Co., Nebraska
County and State

Figures:



Figure 1: Souvenir Plate, made in Germany, of the Kacirek-Woita General Store, circa 1900. Source: Woita, Jeffrey J., Ancestry.com. Uploaded July 2010, Accessed Feb. 19, 2014.

Kacirek-Woita General Store

Saunders Co., Nebraska

Name of Property

County and State



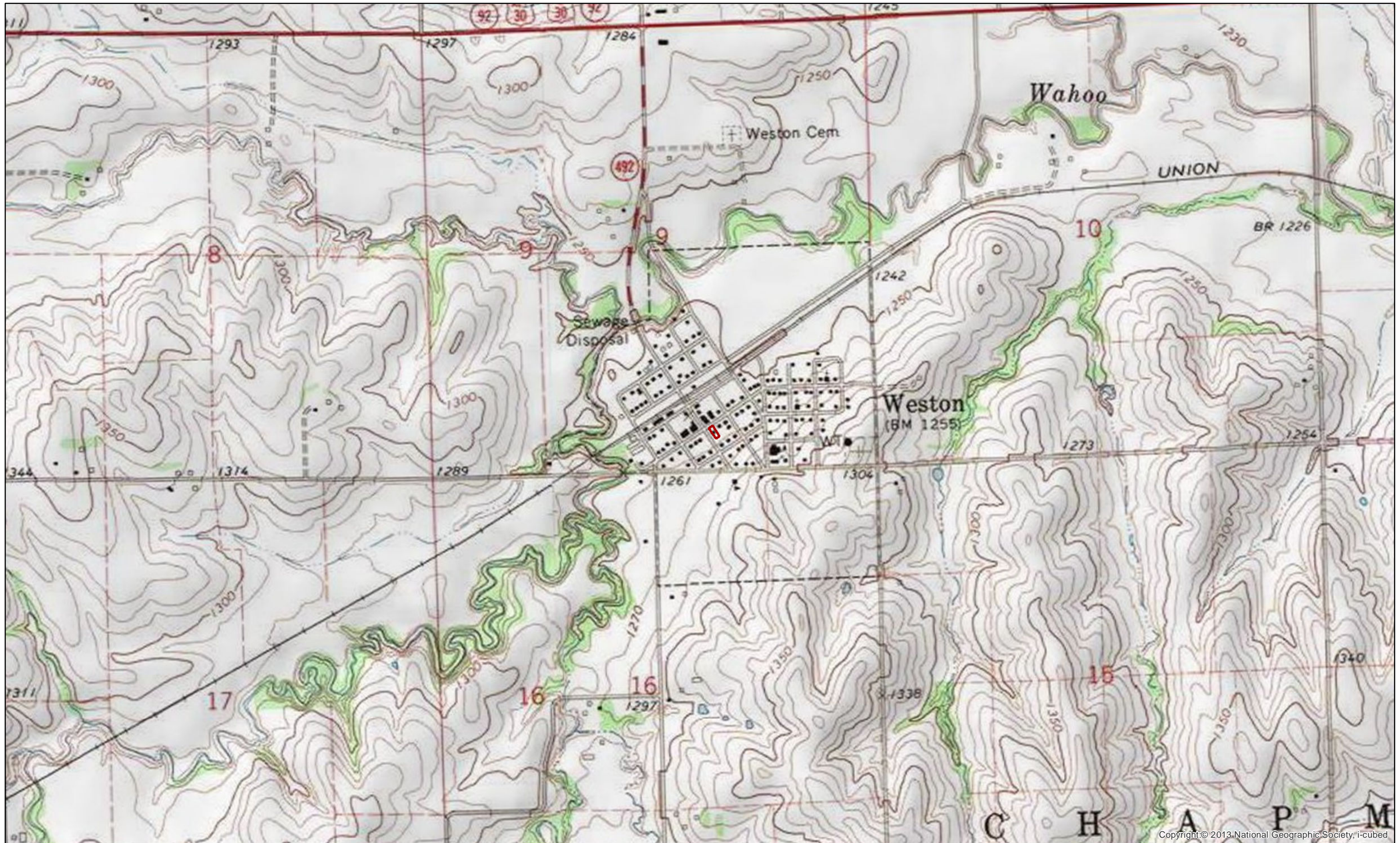
Figure 2: Kacirek-Woita General Store, circa 1920s. Source: Saunders County Museum. Uploaded by Woita, Jeffrey J. to Ancestry.com. Uploaded Feb. 2008, accessed Feb. 19, 2014.

Kacirek-Woita General Store
Name of Property

Saunders Co., Nebraska
County and State



Figure 3: Frank Habel Store, Weston Village. Date unknown. Source: Property owner, Robert Hall.



Kacirek-Woita General Store
 Weston, Saunders County, Nebraska

Legend

Property Boundaries

0 0.25 0.5 1 Miles

1:12,000

Copyright © 2013 National Geographic Society, i-cubed









NO
PARKING







W. A. CARY & CO. BUFFALO, N. Y.



W. A. CARY SAFE CO. LTD.

BUFFALO, N. Y.













Handwritten note: JSA 4

Handwritten note: 555

Handwritten note: [illegible]

Handwritten note: Dick 2000







National Register of Historic Places
Memo to File

Correspondence

The Correspondence consists of communications from (and possibly to) the nominating authority, notes from the staff of the National Register of Historic Places, and/or other material the National Register of Historic Places received associated with the property.

Correspondence may also include information from other sources, drafts of the nomination, letters of support or objection, memorandums, and ephemera which document the efforts to recognize the property.

UNITED STATES DEPARTMENT OF THE INTERIOR
NATIONAL PARK SERVICE

NATIONAL REGISTER OF HISTORIC PLACES
EVALUATION/RETURN SHEET

REQUESTED ACTION: NOMINATION

PROPERTY NAME: Kacirek--Woita General Store

MULTIPLE NAME:

STATE & COUNTY: NEBRASKA, Saunders

DATE RECEIVED: 5/28/14 DATE OF PENDING LIST: 6/20/14
DATE OF 16TH DAY: 7/07/14 DATE OF 45TH DAY: 7/14/14
DATE OF WEEKLY LIST:

REFERENCE NUMBER: 14000397

REASONS FOR REVIEW:

APPEAL: N DATA PROBLEM: N LANDSCAPE: N LESS THAN 50 YEARS: N
OTHER: N PDIL: N PERIOD: N PROGRAM UNAPPROVED: N
REQUEST: N SAMPLE: N SLR DRAFT: N NATIONAL: N

COMMENT WAIVER: N

ACCEPT RETURN REJECT 7-8-2014 DATE

ABSTRACT/SUMMARY COMMENTS:

Very nice example of a late 19th C., wood frame General Store. Intact interior. Associated with Czech immigrants to Area

RECOM./CRITERIA Accept A + C

REVIEWER J. Grubb DISCIPLINE _____

TELEPHONE _____ DATE _____

DOCUMENTATION see attached comments Y/N see attached SLR Y/N

If a nomination is returned to the nominating authority, the nomination is no longer under consideration by the NPS.



May 22, 2014

Alexis Abernathy
NPS-National Register of Historic Places
1201 I St. NW, 8th FL
Washington, DC 20005

Re: Kacirek-Woita General Store

Dear Ms. Abernathy,

Enclosed is the complete nomination packet for the Kacirek-Woita General Store in Saunders County, Nebraska. The enclosed contents are as follows:

- The signed first page of the Kacirek-Woita General Store nomination.
- One archival disk with the true and correct copy of the nomination for the Kacirek-Woita General Store to the National Register of Historic Places in pdf format.
- One disc with the photographs for the Kacirek-Woita General Store nomination.

If you have any questions regarding the submitted materials, feel free to contact me at the phone number or email address below.

Sincerely,

A handwritten signature in blue ink that reads "Ruben A. Acosta".

Ruben A. Acosta
National Register and CLG Coordinator
Nebraska State Historic Preservation Office

Phone: 402-471-4775
Fax: 402-471-3100
ruben.acosta@nebraska.gov

1500 R Street
PO Box 82554
Lincoln, NE 68501-2554
p: (800) 833-6747
(402) 471-3270
f: (402) 471-3100
www.nebraskahistory.org

National Register of Historic Places Registration Form

This form is for use in nominating or requesting determinations for individual properties and districts. See instructions in National Register Bulletin, *How to Complete the National Register of Historic Places Registration Form*. If any item does not apply to the property being documented, enter "N/A" for "not applicable." For functions, architectural classification, materials, and areas of significance, enter only categories and subcategories from the instructions.

1. Name of Property

Historic name Kacirek-Woita General Store

Other names/site number F. E. Woita General Store, Weston General Store, SD18-029

Name of related multiple property listing n/a

(Enter "N/A" if property is not part of a multiple property listing)

2. Location

Street & Number 250 N. Elm St.

City or town Weston

State Nebraska

County Saunders

Not for publication Vicinity

3. State/Federal Agency Certification

As the designated authority under the National Historic Preservation Act, as amended, I hereby certify that this nomination request for determination of eligibility meets the documentation standards for registering properties in the National Register of Historic Places and meets the procedural and professional requirements set forth in 36 CFR Part 60.

In my opinion, the property meets does not meet the National Register Criteria. I recommend that this property be considered significant at the following level(s) of significance: national statewide local

Applicable National Register Criteria: A B C D

SHPO/Director

Signature of certifying official/Title:

Date

Nebraska State Historical Society

State or Federal agency/bureau or Tribal Government

In my opinion, the property meets does not meet the National Register criteria.

Signature of Commenting Official

Date

Title

State of Federal agency/bureau or Tribal Government

4. National Park Service Certification

I, hereby, certify that this property is:

- entered in the National Register.
- determined eligible for the National Register.
- determined not eligible for the National Register.
- removed from the National Register.
- other, (explain): _____

Signature of Keeper

Date of Action

Kacirek-Woita General Store
Name of Property

Saunders Co., Nebraska
County and State

5. Classification

Ownership of Property (Check as many boxes as apply)

- Private
- Public-local
- Public-state
- Public-federal

Category of Property (Check only one box)

- Building(s)
- District
- Site
- Structure
- Object

Number of Resources within Property (Do not include previously listed resources in the count.)

Contributing	Noncontributing	
1		Buildings
		Sites
		Structures
		Objects
1		Total

Number of contributing resources previously listed in the National Register 0

6. Function or Use

Historic Functions (Enter categories from instructions.)

COMMERCE/TRADE: Department store

Current Functions (Enter categories from instructions.)

WORK IN PROGRESS

7. Description

Architectural Classification (Enter categories from instructions.)

Late Victorian: Commercial Vernacular

Materials (enter categories from instructions.)

Principal exterior materials of the property: WOOD: Weatherboard

Kacirek-Woita General Store
Name of Property

Saunders Co., Nebraska
County and State

Description

Summary Paragraph (Briefly describe the general characteristics of the property, such as its location, type, style, method of construction, setting, size, and significant features. Indicate whether the property has historic integrity.)

The Kacirek-Woita General Store is a two-story, wood-framed commercial building with corner entry dating to 1894 located at the intersection of Elm and Pike Streets in the center of Weston, Saunders County, Nebraska, population 324 (2010). The wood-clad building preserves its late-19th century commercial façade, including its carved wooden storefront, wooden triangular pediments over the second story windows, and elaborate wooden cornice brackets. A secondary storefront for the store's grocery is located towards the rear of the building along the Elm Street elevation. Adjacent to this a wood paneled door provides access to the store's freight elevator. The interior features a large main retail space with wood floors, built-in display shelves, a suspended gallery, and office. A smaller grocery is located to the rear of the building, with an office space and storage room located on the second floor. An 1895 hand-powered freight elevator allowed the movement of goods from the basement to the grocery and upstairs storeroom. The store is one of the few surviving buildings of Weston's commercial center and possesses high integrity in both its exterior and interior.

Narrative Description (Describe the historic and current physical appearance and condition of the property. Describe contributing and noncontributing resources if applicable.)

Exterior

The Kacirek-Woita General Store is a two-story, wood-framed, two-part commercial block located on a corner lot at the intersection of Elm and Pike Streets in central Weston village. The building was constructed for use as a store by the firm of Kacireck, Woita, and Co. in 1894. Completed in 1895, the building remained in use as a combined general and grocery store under several owners until it closed in 1971 with the death of its last proprietor, Frank E. Woita. The store rests on a mortared stone foundation and is clad in horizontal wood siding. The roof is a low pitched asphalt roll roof that is hipped on the northwest end and gabled on the southwest end. To the rear of the building is a one-story, wood framed shed addition. The addition dates to early in the building's history, as it appears in historic photographs and is clad in identical siding.

The primary façade faces northwest onto Pike street and consists of a four bay, wood storefront on the ground floor. Fluted wooden columns with medallion detailing divide the bays, with the medallions corresponding to the intersection with the transom bar. A basic cornice runs along the top of the storefront. Wood panel bulkheads are located along the base of the storefront. Currently, the window openings are covered with plywood sheets, but the original glass display windows and transoms are preserved and visible from the interior. The second story has two symmetrically arranged, one-over-one double hung sash windows over the two central bays of the façade. The windows have a combination straight and triangular milled wood pediment. The wood bead board cornice is supported by elaborate milled wood cornice brackets aligned with the columns below.

The main entrance to the store is through a recessed, angled corner entry facing the intersection of Elm and Pike streets. Entry is through a glazed wood panel door. A single one-over-one double hung sash window with a combination straight and triangular milled wood pediment is located above the door on the second story. The door, display windows, transom windows, and the second-story window are covered in plywood, which preserves the original glass and woodwork underneath.

Kacirek-Woita General StoreSaunders Co., Nebraska**Name of Property****County and State**

The long secondary façade facing Elm Street is an asymmetrical arrangement of storefronts and windows. At the northern end, adjacent to the recessed corner entry, is a one bay continuation of the primary wooden storefront. At the southern end, adjacent to the shed addition, is a three bay wood storefront that corresponds to the store's grocery. This storefront is less elaborate than the primary storefront, as the columns lack fluting and decorative medallions, but includes identical wood panel bulkheads and a basic wood cornice. A glazed wood panel door is located in the recessed entry. Plywood covers the window openings, which have mostly lost their original glazing or preserve shattered remnants of glass. Located to the left of the storefront is a wood panel door providing access to the freight elevator shaft. The doorway has a combination straight and triangular milled wood pediment. Three irregularly spaced windows are located on the second story level, with one centered over the grocery storefront. All the windows are one-over-one double hung sash, with combination straight and triangular pediments, and are covered in plywood. Milled wood brackets are regularly spaced along the length of the cornice. A small, hipped roof head house rises above the roofline in line with the elevator access door.

The rear, wood framed shed addition is clad in the same horizontal wood siding as the main store building. The addition dates to early in the history of the building, as it does not appear in a circa 1900 ceramic commemorative plate of the building, but it does appear in a circa 1920 photograph of the store (figure 1 and 2). A wood parapet screens the corrugated metal roof from view from the street. A non-historic modern aluminum garage door replaced the original three-bay entry and display windows that appeared in historic photos and in survey photos as late as 1980. Adjacent to the garage door is a modern panel door. Above the shed addition, on the second story of the gable end of the store building, are two symmetrically placed one-over-one double hung sash windows with combination straight and triangular milled wood pediments.

The northeastern elevation has four irregularly spaced windows, one at the ground floor level and the other three at the second floor level. All of the windows are one-over-one double hung sash. The second story windows have milled wood triangular pediments. The ground floor window has a straight lintel. The rear shed addition also has a wood panel door on this elevation. All but one of the windows are covered in plywood.

Interior

The Kacirek-Woita General Store's interior possesses a high level of design and material integrity. The store preserves its organization of two specialized retail spaces, storage rooms, and offices. It preserves its original shelves, hardware, elevator, safe, and electrical system as well. Material changes are limited to repairs of a basement foundation wall and of several of the second story walls.

The general store retail space occupies the front two-thirds of the building. It is two stories in height, with a second-floor gallery running around all four walls. The floor is wood plank and the ceiling is painted wood bead-board. The long northeastern and southwestern sides retain their original milled wood, grain-painted shelving. The northeastern shelves also feature a sliding ladder on rollers for access to the upper shelves. The shelving's molding and posts possess the same decoration as the exterior storefront. Along the front of the room a display shelf with a wood batten fascia provides space for the display of goods that would be visible through the display windows, which mostly retain their original glass and wood framing. Two of the transom windows also retain their historic green cloth shades. In the eastern corner of the space there is an office space, separated from the sale floor by waist-high wood partitions and a carved wood door frame. The office has a built-in desk, one exterior and two interior windows, and a historic safe with the name Kacirek, Woita & Co. painted across the top. The interior retains its circa-1921 lighting fixtures, which are suspended from the ceiling on cords. A large floor grate to the rear of the space connects with the basement furnace, providing central heat to the store. A vent control is located on the nearby post at the end of the stairs leading to the second floor.

Kacirek-Woita General StoreSaunders Co., Nebraska**Name of Property****County and State**

The rear third of the main building is a separate, single story retail space that corresponded to the historic grocery and which is entered through the secondary shop front on the Pike Street façade. The floor is wood plank and the ceiling is painted bead board. Three of the walls feature built in shelves and drawers for the display of merchandise. The molding profiles and millwork again reflect the designs used on the storefront. A small window on the north side of the space provides access to the office located in the general store space. Adjacent to the window is a wood panel door providing access to the basement.

Between the grocery space and the general store space is a three story freight elevator, which allows the movement of goods from the basement to the second story. A double wood panel door provides access from the grocery space to the freight elevator. The shaft is clad in wood batten board on the exterior and wood plank on the interior. The elevator platform measures five feet by five feet six inches, and rides along wooden rails. The 1895 iron mechanism is hand powered via ropes and is located under the head house on the second floor level.

A batten board clad staircase at the rear of the general store space leads to the second floor gallery. The wood gallery is suspended from the ceiling by metal poles which are painted to resemble wood. A low turned wood baluster is located along the edge of the gallery. Built in shelves are located along the north wall. Shelves are missing from the south wall, which is also missing its plaster leaving the wood lathe exposed. The remaining walls are wallpaper on plaster. The sills of the second floor windows are even with the gallery floor.

Two rooms are accessed from the second floor gallery and are located above the grocery space. The northeastern room has plank floors, a wood bead board ceiling, and historic wallpaper on three walls. The door, door frame, windows, and window frames are all grain painted. The door retains its historic iron hardware. The southeast room has wood plank walls and floors, and an unpainted wood bead board ceiling. The elevator head frame is located in the northwestern corner of the room, where two of the shaft walls are clad in horizontal bead board. Adjacent to the elevator is the historic electrical junction box. The brick chimney rises through this room as well. Repair work is evident in the southwest wall, where some of the historic wood planks were removed to facilitate the replacement of the wall's top plate.

The basement is accessed from the grocery space via a staircase. A small window at the top of the staircase allows individuals in the general store office to see into the space. The basement is dirt floored and the walls are made of roughly hewn stone blocks, except for the northeast wall, which was replaced with concrete block. Wood posts in the center of the space provide support for the joists of the floor above. Adjacent to the stair and underneath the general store space is the historic coal fired furnace.

Kacirek-Woita General Store

Saunders Co., Nebraska

Name of Property

County and State

8. Statement of Significance

Applicable National Register Criteria

(Mark "X" in one or more boxes for the criteria qualifying the property for National Register listing.)

- A** Property is associated with events that have made a significant contribution to the broad patterns of our history.
- B** Property is associated with the lives of persons significant in our past.
- C** Property embodies the distinctive characteristics of a type, period, or method of construction or represents the work of a master, or possesses high artistic values, or represents a significant and distinguishable entity whose components lack individual distinction.
- D** Property has yielded, or is likely to yield information important in prehistory or history.

Criteria Considerations

(Mark "X" in all the boxes that apply.)

Property is:

- A** Owned by a religious institution or used for religious purposes.
- B** Removed from its original location.
- C** A birthplace or a grave.
- D** A cemetery.
A reconstructed building, object, or structure.
- E** A reconstructed building, object, or structure.
- F** A commemorative property.
- G** Less than 50 years of age or achieved significance within the past 50 years.

Areas of Significance

(Enter categories from instructions.)

COMMERCE

ARCHITECTURE

Period of Significance

1894-1964

Significant Dates

1894 Construction

1921 Electric lighting installed

Significant Person

(Complete if Criterion B is marked above.)

Cultural Affiliation

Czech-Americans

Architect/Builder

NO -
only if D
sec Bulkh
Page...

Kacirek-Woita General Store

Saunders Co., Nebraska

Name of Property**County and State****Statement of Significance Summary Paragraph** (Provide a summary paragraph that includes level of significance, applicable criteria, justification for the period of significance, and any applicable criteria considerations.)

Constructed by Kacirek, Woita & Co. in 1894, the Kacirek-Woita Store is the only surviving general store in Weston village. The building is eligible for nomination to the National Register of Historic Places under Criterion A at the local level of significance, for its association with Weston's commercial growth and role as a center for Czech immigrants. It is also eligible at the local level under Criterion C as it is a rare intact example of once common Victorian vernacular commercial architecture. The all-wood general store maintains not only its historic envelope with its Victorian ornamentation, but its internal organization and ornamentation as well.

Narrative Statement of Significance (Provide at least one paragraph for each area of significance.)Criterion A: Commerce

The F.E. Woita store in Weston is one of the few remaining commercial buildings remaining in Weston that is associated with the highpoint of the village's commercial activity. The building is representative of the once common general store. Constructed at the highpoint of the village's economic prosperity, the Kacirek-Woita General Store was open for business under a succession of owners from 1894 until 1971, whereupon it was sold and used as a storage space. The store was spared destruction by fire or redevelopment, allowing it to remain an intact representation of a late 19th century general store. The building's period of significance dates from 1894 until 1964, during which time the building housed a prosperous mercantile business in Weston that weathered multiple economic downturns.

Founded in 1877 on a branch of the Union Pacific Railroad in Chapman Township, Weston developed into a commercial center for local farmers, many of whom were immigrants to the district from Bohemia, German principalities, and Sweden in the 1870s and 1880s. The majority of the farms surrounding Weston were owned by Czech immigrants or their children; many of these families also owned businesses in Weston, including the Kris, Novak, Pop, and Woita families.¹ Weston was home to multiple Bohemian congregations by the turn of the 20th century, including Catholics, Lutherans, Methodists, and Presbyterians.² In addition to Czechs, Weston was a center as well for Swedish immigrants, who constructed a Baptist Church in the town in 1889.³ The village grew as a result of expanded settlement as the railroads sold thousands of acres of land in the vicinity in the 1880s—The Union Pacific Railroad in 1884 alone sold 4 million acres of land statewide.⁴ Farmers produced more during the 1880s as a result of improved farm machinery and favorable weather, which led to increased business for merchants who supplied farmers and purchased their produce.⁵ By 1890, Weston was home to thirty five different businesses, including five general stores which catered to the town's 350 residents and to neighboring farmsteads.⁶ Four years later, when the present Kacirek-Woita General Store was constructed, the town supported forty-two businesses, four general stores, and a population of between 425 and 500 individuals.⁷

¹ *Illustrated Farm Atlas of Saunders County* (Brown-Scoville Publishing Co.: Des Moines, IA 1907) p. 35.

² "Weston—Saunders County" *Virtual Nebraska: Nebraska...Our Towns*. University of Nebraska, Lincoln, Accessed March 5, 2014, www.casde.unl.edu/history/counties/saunders/weston/index.php.

³ *Ibid.*

⁴ James C. Olson and Ronald C. Naugle, *History of Nebraska*, Third Edition (University of Nebraska Press: Lincoln, NE 1997)p. 200.

⁵ *History of Nebraska*, 200-204.

⁶ *Nebraska State Gazetteer and Business Directory 1890*, pp. 546, 658.

⁷ *Nebraska State Gazetteer and Business Directory 1894-95* pp. 605-606, 741.

Kacirek-Woita General StoreSaunders Co., Nebraska**Name of Property****County and State**

The partnership that constructed the Kacirek-Woita General Store was formed during this period of economic growth for Weston. James Kacirek, the senior partner of Kacirek, Woita, and Co., immigrated to the United States from Bohemia in 1880 and worked as a farmer and as a member of a lumber business.⁸ In 1891 he entered into a partnership with an established Weston merchant, Anton Chapek.⁹ This partnership was the seed for the formation of Kacirek, Woita and Company. Chapek sold his interest later that year to James Woita, who had worked for two other leading store owners in Weston: James Keay, one of the first merchants in Weston, and Frank Hakel, the owner of the largest general store in Weston at the time.¹⁰ A third partner, Willard Hagenbuck, worked with the firm from 1891 until 1896, when he retired and sold his interest to John Woita, older brother of James Woita.¹¹ Kacirek, Woita, and Hagenbuck operated their store in Weston for three years before constructing the current Kacirek-Woita General Store on the corner of Elm and Pike in 1894.¹² The store was built on a prime location, at the intersection of the village's two primary streets, next to the village bandstand, and only a block from the railroad.¹³ The store's corner location and exterior organization with a large wood storefront along the short side of the building and a separate grocery storefront on the long side mirrored Frank Hakel's larger 1881 Weston Mercantile Store, which was located across the railroad tracks at the intersection of Vine and Elm streets (figure 3). The Kacirek and Woita store was quite prosperous at this time and the proprietors even had commemorative plates with an image of the store produced in Germany for sale.

Kacirek, Woita and Company opened at the height of Weston's prosperity and population. However, the economic conditions of the mid-1890s slowed the town's growth to almost a standstill. Kacirek and Woita stopped offering credit at this time and switched to an all-cash business.¹⁴ In 1902, thirty-six businesses were located in Weston, but the number of general stores declined to just two: Frank Hakel's General Store and the Kacirek and Woita Brothers Store.¹⁵ By 1907, the number of businesses decline further to twenty-nine.¹⁶ The town rebounded slightly in the years prior to World War I, and by 1913 the town had two banks, three churches, an opera house, three general stores, and a total of thirty businesses.¹⁷ In 1915 the town added a new brick school and a municipal sewer system, and by 1920 several businesses in the village center had constructed brick buildings, including the Weston Bank.¹⁸ The rear shed addition to the Kacirek-Woita General Store dates to this time period. In 1921, electricity finally reached Weston as a line was completed from the county seat of Wahoo, seven miles to the east. The last major modification of the Kacirek-Woita General Store dates to this time, as it was outfitted with a then modern electrical lighting system.

The Kacirek-Woita General Store changed owners several times during the three decades prior to the Great Depression. John Woita died in 1903, leaving his share in the store to his wife, Marie. James Kacirek sold his interest in the store to James Woita in 1904 to open his own store in the village of Touhy, six miles to the southwest. In 1908, James Woita sold his majority stake in the store to Frank Virgl, who became the sole owner of the store by 1911 when John Woita's widow and Joseph Staska, Virgl's business partner, sold their remaining stakes to Frank Virgl. Virgl had the store electrified, and

⁸ *Biographical Record of Saunders and Sarpy Counties* (Biographical Publishing Co.: Chicago, 1900) p. 182.

⁹ *Ibid.*

¹⁰ *Ibid.*

¹¹ *Ibid.*, pp. 181-182.

¹² *Biographical Record*, 182; *Wahoo New Era*, June 14, 1894.

¹³ *Illustrated Farm Atlas of Saunders County* (Brown-Scoville Publishing Co.: Des Moines, IA 1907) p. 33.

¹⁴ *Wahoo New Era*, December 19, 1895.

¹⁵ *Nebraska State Gazetteer and Business Directory*, 1902-03, pp 566, 707.

¹⁶ *Nebraska State Gazetteer and Business Directory*, 1907-08, pp. 961, 1231.

¹⁷ *Nebraska State Gazetteer and Business Directory*, 1913, pp. 779-780, 1038.

¹⁸ "Weston—Saunders County" *Virtual Nebraska: Nebraska...Our Towns*. University of Nebraska, Lincoln, Accessed March 5, 2014, www.casde.unl.edu/history/counties/saunders/weston/index.php.

Kacirek-Woita General Store

Saunders Co., Nebraska

Name of Property

County and State

operated the store until 1929, when he transferred the store to Frank E. Woita, the son of John Woita, for one dollar.¹⁹ Frank Woita operated the store until his death in 1971, when it was sold and became Lumir Maly Storage.²⁰

Criterion C: Architecture

The Kacirek-Woita General Store is an unusually intact example of the once common Victorian-era General Store. While it presents itself as a two-part commercial block building with separate floors for commerce and living, the two story store interior is devoted entirely to retail space or storage. The building preserves its wooden storefronts, which were once common among rural stores, as they provided the appearance of urban cast iron storefronts at a reduced price. The Kacirek-Woita General Store's storefront is an excellent example of this type, with ornamented wooden columns featuring a variety of details including fluting, medallions, and ogee molding that calls to mind similarly detailed cast iron fronts commonly found in the time period.

More significant is the intact interior which preserves most of its original features and materials, including surface treatments and detailing. The surviving shelving, doors, and window frames were all grain painted to simulate more valuable materials. The store retains much of its historic wallpaper, especially on the second floor. In addition, the building's 1920s electrical system is operable, and many of the lights retain their historic hardware including original glass globes. Other significant elements include the store safe and working freight elevator.

The store clearly reads as a successful late 19th century commercial building. It is the only surviving intact general store building in Weston. The largest general store building in Weston, Frank Hakel's Weston Merchandise Company, is no longer extant and its lot northwest of the Kacirek-Woita General Store is now occupied by a residence at the intersection of Elm and Vine Streets. A fire in 1975 destroyed a large block of commercial buildings in the center of the village, including the former Tony Kriz general merchandise store. One remaining store building, located southwest of the Kacirek-Woita General Store at Pike and Ash streets, reads as a commercial building but lacks integrity and has been extensively modified.

¹⁹ *Abstract of Title, Lot 5, Block 10 in the First Addition to Weston, Saunders County, Nebraska*, no 22.

²⁰ Pokorny, Virginia A., *"Uptown, Downtown—All Around Our Town": Depicting the History and Progress of Weston Nebraska*, (Weston Centennial Historical Committee: Weston, NE, 1976), p. 27.

Kacirek-Woita General Store
Name of Property

Saunders Co., Nebraska
County and State

9. Major Bibliographic References

Bibliography (Insert bibliography here – cite the books, articles and other sources used in preparing this form.)

Abstract of Title, Lot 5, Block 10 in the First Addition to Weston, Saudners County, Nebraska.

Biographical Record of Saunders and Sarpy Counties. Biographical Publishing Co.: Chicago, 1900.

Nebraska State Gazetteer and Business Directory, 1890-91, 1894-95, 1902-03, 1907-08, 1913

Olson, James C. and Ronald C. Naugle. *History of Nebraska.* Third Edition. University of Nebraska Press: Lincoln, NE 1997.

Pokorny, Virginia A., "Uptown, Downtown—All Around Our Town": *Depicting the History and Progress of Weston Nebraska,* Weston Centennial Historical Committee: Weston, NE, 1976.

"Weston—Saunders County" *Virtual Nebraska: Nebraska...Our Towns.* University of Nebraska, Lincoln, Accessed March 5, 2014, www.casde.unl.edu/history/counties/saunders/weston/index.php.

Wahoo New Era. Wahoo, Nebraska. 1892-1896.

Previous documentation on file (NPS):

- preliminary determination of individual listing (36 CFR 67 has been requested)
- previously listed in the National Register
- previously determined eligible by the National Register
- designated a National Historic Landmark
- recorded by Historic American Buildings Survey #
- recorded by Historic American Engineering Record #
- recorded by Historic American Landscape Survey #

Primary location of additional data:

- State Historic Preservation Office
- Other State agency
- Federal agency
- Local government
- University
- Other (Name of repository)

Historic Resources Survey Number (if assigned): SD18-029

10. Geographical Data

Acreage of property Less than one USGS Quadrangle Wahoo West

(Use either the UTM system or latitude/longitude coordinates. Delete the other.)

Latitude/Longitude Coordinates

Datum if other than WGS84: _____

- | | | | | |
|----|----------|-------------------|-----------|--------------------|
| 1. | Latitude | <u>41.191825°</u> | Longitude | <u>-96.743302°</u> |
| 2. | Latitude | _____ | Longitude | _____ |
| 3. | Latitude | _____ | Longitude | _____ |
| 4. | Latitude | _____ | Longitude | _____ |

Kacirek-Woita General Store

Saunders Co., Nebraska

Name of Property

County and State

Verbal Boundary Description (Describe the boundaries of the property.)

The property is located on Lot 5, Block 10, Weston First Addition.

Boundary Justification (Explain why the boundaries were selected.)

The boundary corresponds to the legal description of the property and includes the area historically associated with the property.

11. Form Prepared By

name/title Ruben A. Acosta, National Register and CLG Coordinator

organization Nebraska State Historical Society

date March 27, 2014

street & number 1500 R Street PO Box 82554

telephone 402-471-4775

city or town Lincoln

state NE

zip code 68501

email ruben.acosta@nebraska.gov

Additional Documentation

Submit the following items with the completed form:

- **Maps:** A USGS map or equivalent (7.5 or 15 minute series) indicating the property's location.
- **Sketch map** for historic districts and properties having large acreage or numerous resources. Key all photographs to map.
- **Additional items:** (Check with the SHPO for any additional items.)

Kacirek-Woita General Store

Saunders Co., Nebraska

Name of Property

County and State

Photographs

Submit clear and descriptive photographs. The size of each image must be 1600x1200 pixels (minimum), 3000x2000 preferred, at 300 ppi (pixels per inch) or larger. Key all photographs to the sketch map. Each photograph must be numbered and that number must correspond to the photograph number on the photo log. For simplicity, the name of the photographer, photo date, etc. may be listed once on the photograph log and doesn't need to be labeled on every photograph.

Photo Log

Name of Property Kacirek-Woita General Store

City or Vicinity Weston

County Saunders

State Nebraska

Photographer Ruben A. Acosta

Date Photographed Feb. 14, 2014

Description of Photograph(s) and number, include description of view indicating direction of camera.

1. Principle storefront and corner entry, Kacirek-Woita Store. View E.
2. ¼ view, exterior Kacirek-Woita Store. View S.
3. ¾ view, grocery storefront and rear addition. View N.
4. Retail space interior with office and gallery. View E.
5. View of storefront from interior. View W.
6. Detail, display shelves, 1st floor. View N.
7. Detail, store safe. View E.
8. View of grocery storefront from interior. View SW.
9. Grocery retail space and shelves. View E.
10. Freight elevator, 2nd floor. View W.
11. 2nd floor display shelves. View NW.
12. 2nd floor storeroom. View N.
13. 2nd floor office. View N.
14. Detail, door hardware, grain painting, wallpaper. View NW.
15. Basement. View E.

Paperwork Reduction Act Statement: This information is being collected for applications to the National Register of Historic Places to nominate properties for listing or determine eligibility for listing, to list properties, and to amend existing listings. Response to this request is required to obtain a benefit in accordance with the National Historic Preservation Act, as amended (16 U.S.C.460 et seq.).

Estimated Burden Statement: Public reporting burden for this form is estimated to average 100 hours per response including time for reviewing instructions, gathering and maintaining data, and completing and reviewing the form. Direct comments regarding this burden estimate or any aspect of this form to the Office of Planning and Performance Management, U.S. Dept. of the Interior, 1849 C. Street, NW, Washington, DC.

Kacirek-Woita General Store
Name of Property

Saunders Co., Nebraska
County and State

Figures:

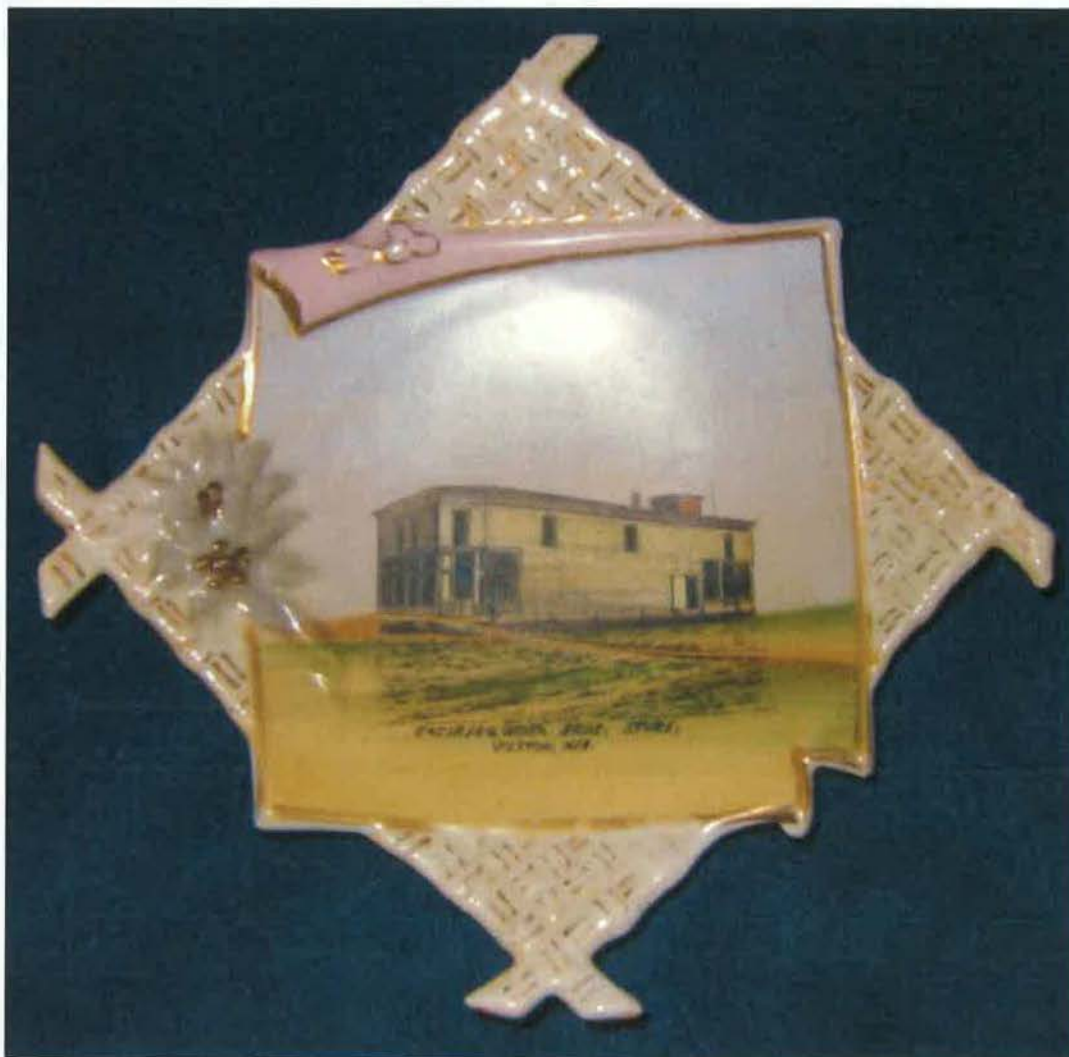


Figure 1: Souvenir Plate, made in Germany, of the Kacirek-Woita General Store, circa 1900. Source: Woita, Jeffrey J., Ancestry.com. Uploaded July 2010, Accessed Feb. 19, 2014.

Kacirek-Woita General Store

Saunders Co., Nebraska

Name of Property

County and State



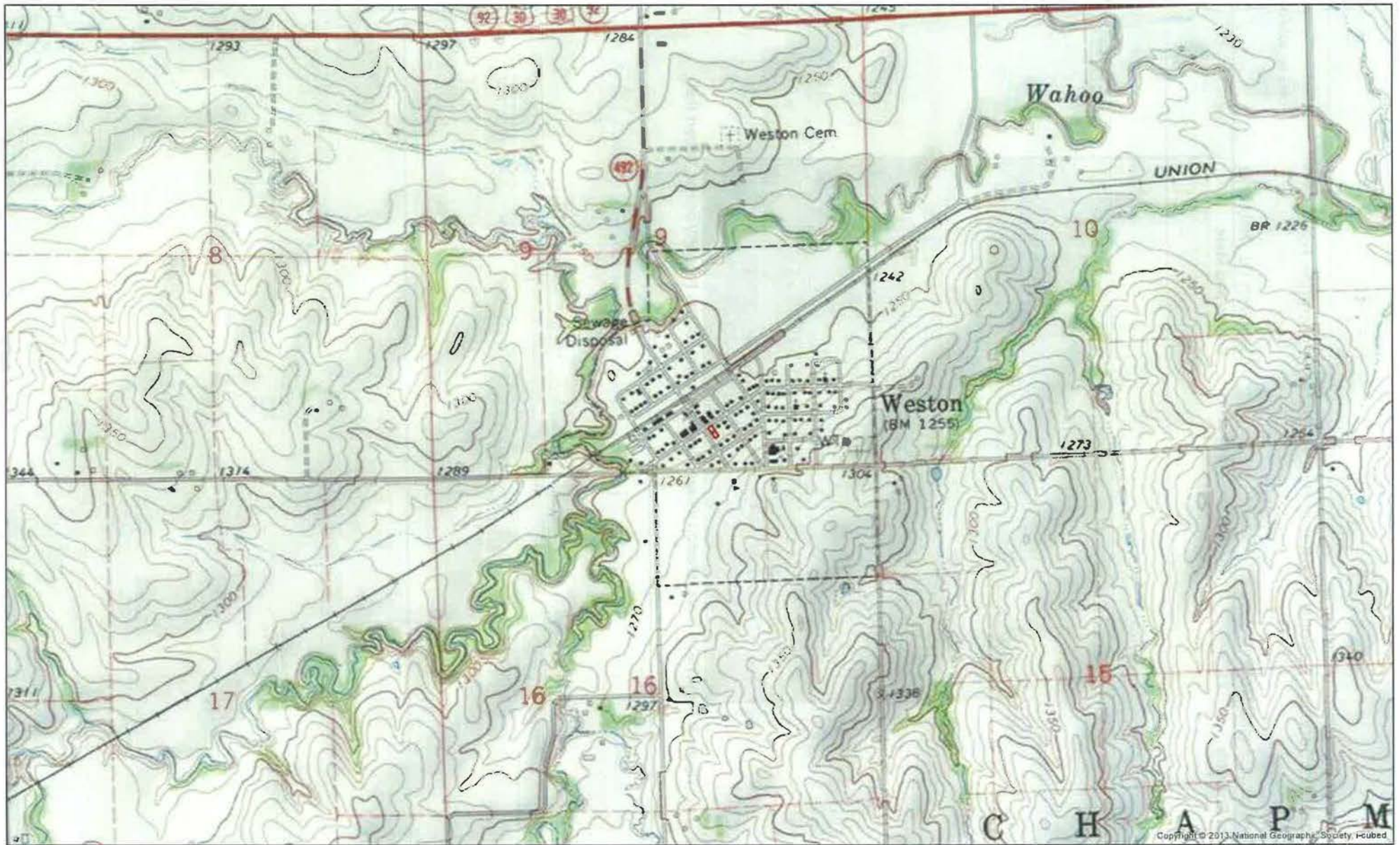
Figure 2: Kacirek-Woita General Store, circa 1920s. Source: Saunders County Museum. Uploaded by Woita, Jeffrey J. to Ancestry.com. Uploaded Feb. 2008, accessed Feb. 19, 2014.

Kacirek-Woita General Store
Name of Property

Saunders Co., Nebraska
County and State

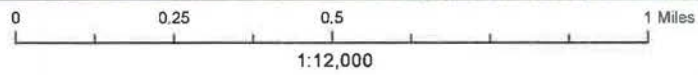


Figure 3: Frank Hakel Store, Weston Village. Date unknown. Source: Property owner, Robert Hall.



Kacirek-Woita General Store
 Weston, Saunders County, Nebraska

Legend
 Property Boundaries



Copyright © 2013 National Geographic Society. I-cubed.