



Olney
Harford County, Md.
photo: Michael Day
December 1986

neg. loc.: Harford Co.
Planning Dept. BelAir
entrance (looking s) with
State Roads Commission
historic site marker

1/26



Olney

Harford County, Md.

photo: Michael Day

December 1986

neg. loc.: Harford Co.

Planning Dept. Bel Air
entrance; looking se

2/26



Olney

Harford County, Maryland

photo: C. Weeks

May 1986

Harford Co. Planning and Zoning Dept.

Bel Air

West elev. of 1810 house

1/27

3/26



Olney

Harford County, MD.

photo: C. Weeks

May 1986

Harf. Co. Planning and Zoning Dept.

West facade (1810) and porch (1861)

~~2/27~~ 4/26



Olney

Harford County, MD.

photo: C. Weeks May 1986

Harf. CO. Dept. Planning and Zoning Bel Air
entrance (west) door, 1810

~~3/21~~ 5/26



Olney

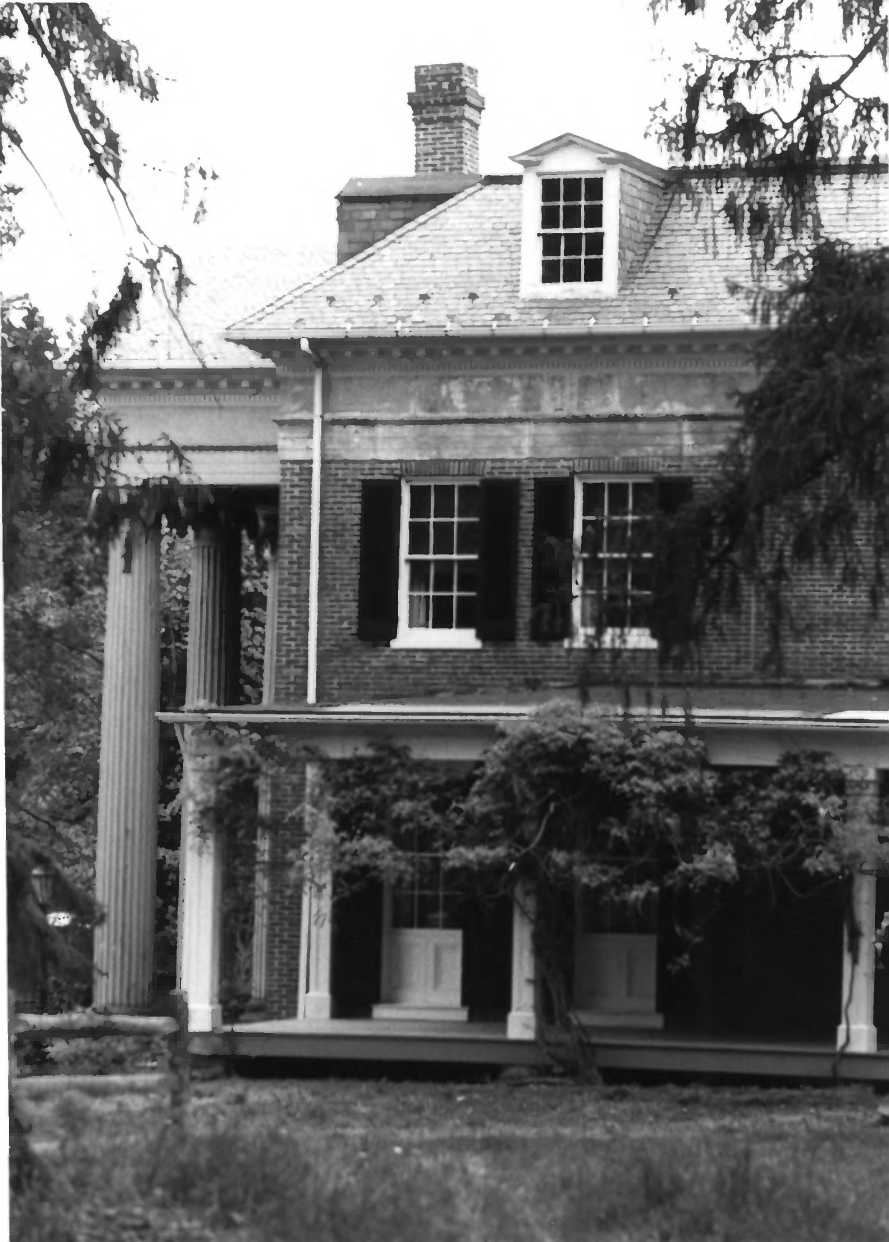
Harford County, MD.

photo: C. Weeks *may 1986*

Harf. Co. Dept. Planning and Zoning, Bel Air

~~1851~~ 1851 addition, detail of windows

~~4/21~~ 6/26



Olney
Harford County, MD.
photo: C. Weeks *Mar 1986*
Harf. CO. Dept. Planning and Zoning, Bel Air
North facade: 1851 parlor and 1925 porch

~~5/21~~ 7/26



Olney

Harford County, MD.

Harf. CO. Dept. Planning and Zoning Bel Air

William Small's Athenaeum portico
(east facade)

May 1986

~~6/21~~ 8/26



Olney
Harford County, Md.
phtot: Michael Day
December 1986

neg. loc.: Harford Co.
Planning Dept. Bel Air
main house; e. elev. and
garden path (boxwood
newly planted on
c. 1845 axis)

9/26



Olney
Harford County, Md.
photo: Michael Day
December 1986

neg. loc.: Harford Co.
Planning Dept. Bel Air
main house; e. elev. and
garden

10/26



Olney
Harford County, MD.
photo: C. Weeks
Harf. Co. Dept Planning and Zoning, Bel Air
William Small Portico, detail
May 1986

~~7/21~~
11/26



Olney
Harford County, MD.

photo: C. Weeks

May 1986

Harf. CO. Dept. Planning and Zoning Bei Ai
William Small portico, detail

~~8/27~~ 12/26



Olney

Harford County, MD?

photo: C. Weeks

July 1986

Harf. Co. Dept. Planning & Zoning Bei AIR
Isqq VanBibber House woodwork in parlor
and Library

9/21 13/26



Olney

Harford County, MD.

photo: C. Weeks

July 1986

Harf. Co. Dept. Planning & Zoning Bel Air

Isaac VanBibber House woodwork, parlor looking into stair hall and smoking room

~~10/21~~ 14/26



Olney

Harford Co. Md.

photo: C. Weeks

July 1986

Harf. Co. Dept. Planning and Zoning Bel Air

Isaac Van Bibber House woodwork in parlor

(detail)

~~11/21~~ 15/26



Dr. John Archer
1803



Olney

Harford Co. Md.

photo: C. Weeks

July 1986

Harf. C. Dept. Planning & Zoning, Bel Air
Stair Hall chair rail, detail

~~72/21~~

16/26



Olney

Harford Co. MD.

photo: C. Weeks

July 1986

Harf. Co. Dept. Planning&Zoning, Bel Air
c. 1810 smokehouse/wood shed

~~13/27~~

17/26



Olney

Harford County, Md.

photo: Michael Day

December 1986

neg. loc.: Harford Co.

Planning Dept. BelAir

blacksmith shop (left)

looking n. towards

main house

18/26



Olney

Hartford Co., Md.

photo: C. Weeks

May 1986

Hartford Co. Rest. 1

Blacksmith Shop

~~45/21~~ 19/26

Planning - Zouin, Belkin



Olney

Harford County, Md.

photo: C. Weeks

May 1986

Harf. Co. Dept. Planning & Zoning, Bel Air
Sheep Barn

~~16/21~~ 20/26



Olney

Harford Co., Md.

photo: C. Weeks

May 1986

Harf. Co. Dept. Planning & Zonigg, Bel Air
Farm Lane, looking north

~~174~~

21/26



Olney

Harford Co. Md.

photo: C Weeks

May 1986

Harf. Co. Dept. Planning&Zoning, Bel Air

Pony/Horse Barn

~~18/21~~ 22/26



Olney

Harford Co. Md.

photo: C. Weeks

May 1986

Harf. Co. Dept. Planning&Zonigg, Bel Air

Dr. William Howard House from main Farm Lane

~~19/21~~

23/26



Olney

Harford Co. Md.

photo: C. Weeks

May 1986

Harf. Co. Dept. Planning&Zoning, Bel Air

~~XXXXXX~~ Spring House

~~2/21~~ 24/26



Oiney

Harford Co. Md.

photo:C. Weeks

May 1986

Hrf. Co. Dept. Planning&Zoning, Bel Air

John Norris House, ne facade

~~2021~~ 25/26



Saint Albans
Anglican Church

Sundays 10:30 AM
Tuesdays Anglican
11 AM
Book of Common Prayer



Olney

Harford County, Md.

December 1986

photo: Michael Day

neg. loc.: Harford Co.

Planning Dept. Bel Air
St. Alban's Anglican
Church, sw elev.

26/26