



Daniel Pratt Historic District
Prattville, Alabama, Autauga County

Robert Gamble, May 1984
Alabama Historical Commission

Looking SW toward Bush Hog/Continental Gin
Complex (original Pratt Factory Complex) #206

Photo number: 1/31



1. Daniel Pratt Historic District
Prattville, Alabama, Autauga County
2. Photographer: John Brown, Jr.
3. Date of photo: Fall 1981-Winter 1982
4. Negative filed with Alabama
Historical Commission
5. View: North Front Bush Hog Building (#206)
6. Photo number: 2/31



1. Daniel Pratt Historic District
Prattville, Alabama, Autauga County
2. Photographer: John Brown, Jr.
3. Date of photo: Fall 1981-Winter 1982
4. Negative filed with Alabama
Historical Commission
5. View: Looking NE toward west front of
Gurney Industries Buildings (#207)
6. Photo number: 3/31



FIRE
EXIT

ALL
WAYS
OPEN

Daniel Pratt Historic District
Prattville, Alabama, Autauga County

Robert Gamble, May 1984
Alabama Historical Commission

Interior view of Gurney Manufacturing Building
(#207)

Photo number: 4/31

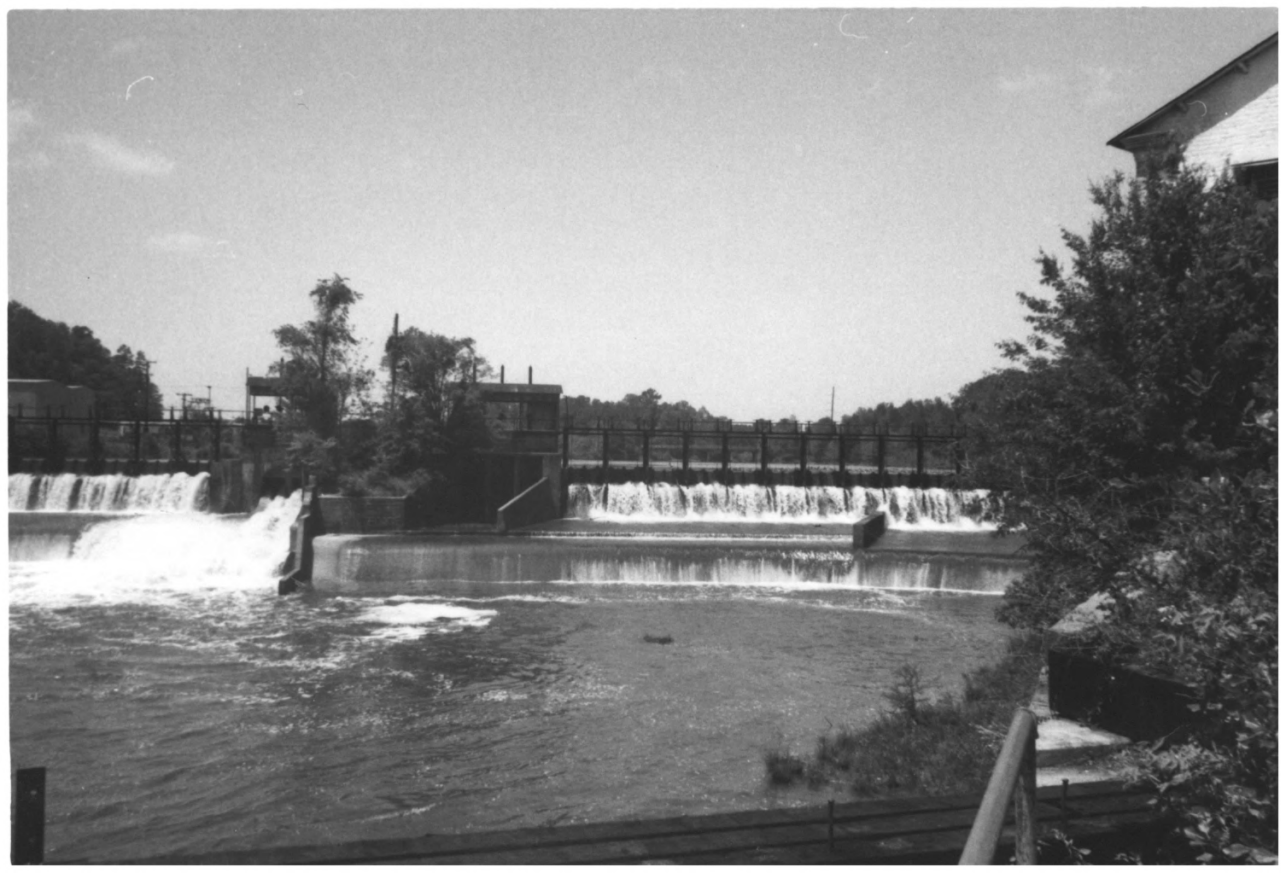


Daniel Pratt Historic District
Prattville, Alabama, Autauga County

Robert Gamble, May 1984
Alabama Historical Commission

Interior view of Gurney Manufacturing Building
(#207)

Photo number: 5/31



Daniel Pratt Historic District
Prattville, Alabama, Autauga County

Robert Gamble, May 1984
Alabama Historical Commission

Looking NW toward Autauga Creek Mill Dam
(#208)

Photo number: 6/31



1. Daniel Pratt Historic District
Prattville, Alabama, Autauga County
2. Photographer: John Brown, Jr.
3. Date of photo: Fall 1981-Winter 1982
4. Negative filed with Alabama
Historical Commission
5. View: Southwest front Old Autauga County
Courthouse (7)
6. Photo number: 7/31



PRATTVILLE SEED & FEED STORE

FOR THE
OF
FEED
CROPS
1955

SEED STORE

1. Daniel Pratt Historic District
Prattville, Alabama, Autauga County
2. Photographer: John Brown, Jr.
3. Date of photo: Fall 1981-Winter 1982
4. Negative filed with Alabama
Historical Commission
5. View: Northwest front - Cloud-Moody-
Yarbrough Building (2-3)
6. Photo number: 8/31



1. Daniel Pratt Historic District
Prattville, Alabama , Autauga County
2. Photographer: John Brown, Jr.
3. Date of photo: Fall 1981-Winter 1982
4. Negative filed with Alabama
Historical Commission

5. View: West front - rental Barnes Dwellings
(15-19)
6. Photo number: 9/31



1. Daniel Pratt Historic District
Prattville, Alabama, Autauga County
2. Photographer: John Brown, Jr.
3. Date of photo: Fall 1981-Winter 1982
4. Negative filed with Alabama
Historical Commission

5. View: West front Miles-Ellis-Barnes House
(20)
6. Photo number: 10/31



1. Daniel Pratt Historic District
Prattville, Alabama, Autauga County
2. Photographer: John Brown, Jr.
3. Date of photo: Fall 1981-Winter 1982
4. Negative filed with Alabama
Historical Commission
5. View: Southwest fronts Autauga County
Courthouse (23)
6. Photo number: 11/31



1. Daniel Pratt Historic District
Prattville, Alabama, Autauga County
2. Photographer: John Brown, Jr.
3. Date of photo: Fall 1981-Winter 1982
4. Negative filed with Alabama
Historical Commission
5. View: East front Mill Village-Gurney MFG.
(28)
6. Photo number: 12/31



1. Daniel Pratt Historic District
Prattville, Alabama, Autauga County
2. Photographer: John Brown, Jr.
3. Date of photo: Fall 1981-Winter 1982
4. Negative filed with Alabama
Historical Commission
5. View: East front rental mill village-Gurney
Mfg.
6. Photo number: 13/31



FOR SALE
LOWDER
250-1013
Call 250-1013

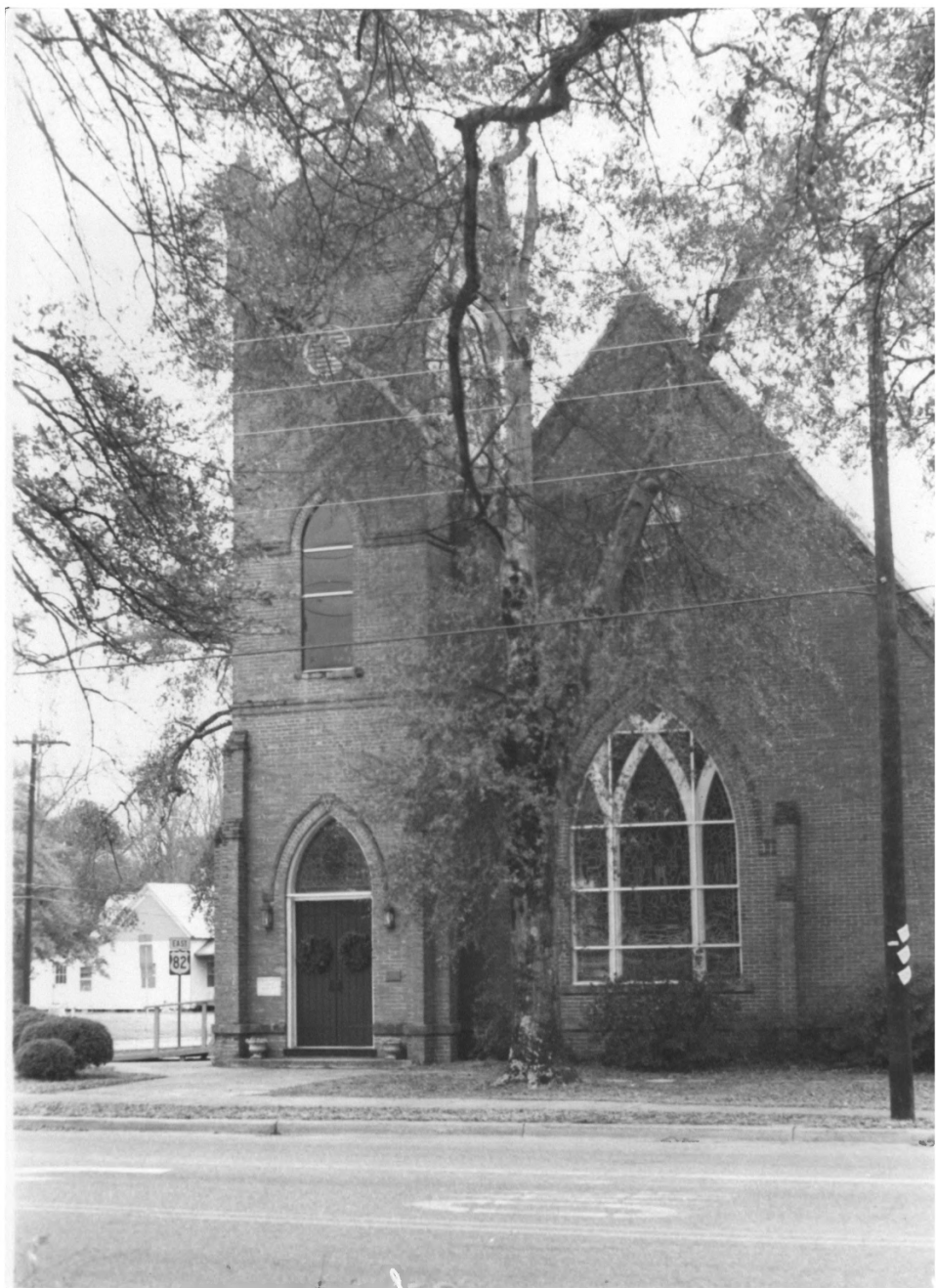
1. Daniel Pratt Historic District
Prattville, Alabama, Autauga County
2. Photographer: John Brown, Jr.
3. Date of photo: Fall 1981-Winter 1982
4. Negative filed with Alabama
Historical Commission
5. View: South front Durden-Miller-Misseldine
House (41)
6. Photo number: 14/31



1. Daniel Pratt Historic District
Prattville, Alabama, Autauga County
2. Photographer: John Brown, Jr.
3. Date of photo: Fall 1981-Winter 1982
4. Negative filed with Alabama
Historical Commission
5. View: East front Hall-Atkeison House (61)
6. Photo number: 15/31



1. Daniel Pratt Historic District
Prattville, Alabama, Autauga County
2. Photographer: John Brown, Jr.
3. Date of photo: Fall 1981-Winter 1982
4. Negative filed with Alabama
Historical Commission
5. View: East front Wilkinson-Avant House (88)
6. Photo number: 16/31



1. Daniel Pratt Historic District
Prattville, Alabama, Autauga County
2. Photographer: John Brown, Jr.
3. Date of photo: Fall 1981-Winter 1982
4. Negative filed with Alabama
Historical Commission
5. View: North front St. Mark's Episcopal
Church (96)
6. Photo number: 17/31



1. Daniel Pratt Historic District
Prattville, Alabama, Autauga County
2. Photographer: John Brown, Jr.
3. Date of photo: Fall 1981-Winter 1982
4. Negative filed with Alabama
Historical Commission
5. View: North front Johnson-Pirtle
North front Carr House (108-109)
6. Photo number: 18/31



1. Daniel Pratt Historic District
Prattville, Alabama, Autauga County
2. Photographer: John Brown, Jr.
3. Date of photo: Fall 1981-Winter 1982
4. Negative filed with Alabama
Historical Commission
5. View: Northwest front Ticknor-Hazen-Burns-
Yarbrough House (104)
6. Photo number: 19/31



Daniel Pratt Historic District
Prattville, Alabama, Autauga County

Robert Gamble, May 1984

Alabama Historical Commission

Looking NE toward 199 E. Sixth St. (117)

Photo number: 20/31



Daniel Pratt Historic District
Prattville, Alabama, Autauga County

Robert Gamble, May 1984
Alabama Historical Commission

Looking East toward 159 N. Northington St.
(121)

Photo number: 21/31



1. Daniel Pratt Historic District
Prattville, Alabama, Autauga County
2. Photographer: John Brown, Jr.
3. Date of photo: Fall 1981-Winter 1982
4. Negative filed with Alabama
Historical Commission
5. View: West front Cook-Frazier House-Board
of Ed. (138)
6. Photo number: 22/31



1. Daniel Pratt Historic District
Prattville, Alabama, Autauga County
2. Photographer: John Brown, Jr.
3. Date of photo: Fall 1981-Winter 1982
4. Negative filed with Alabama
Historical Commission
5. View: South front, Fay-Grouby Servant House
(148A)
6. Photo number: 23/31



1. Daniel Pratt Historic District
Prattville, Alabama, Autauga County
2. Photographer: John Brown, Jr.
3. Date of photo: Fall 1981-Winter 1982
4. Negative filed with Alabama
Historical Commission
5. View: Northwest front T.A.Fay-Mercer House
(149)
6. Photo number: 24/31



1. Daniel Pratt Historic District
Prattville, Alabama, Autauga County
2. Photographer: John Brown, Jr.
3. Date of photo: Fall 1981-Winter 1982
4. Negative filed with Alabama
Historical Commission
5. View: South front rental Herrod House (156)
6. Photo number: 25/31

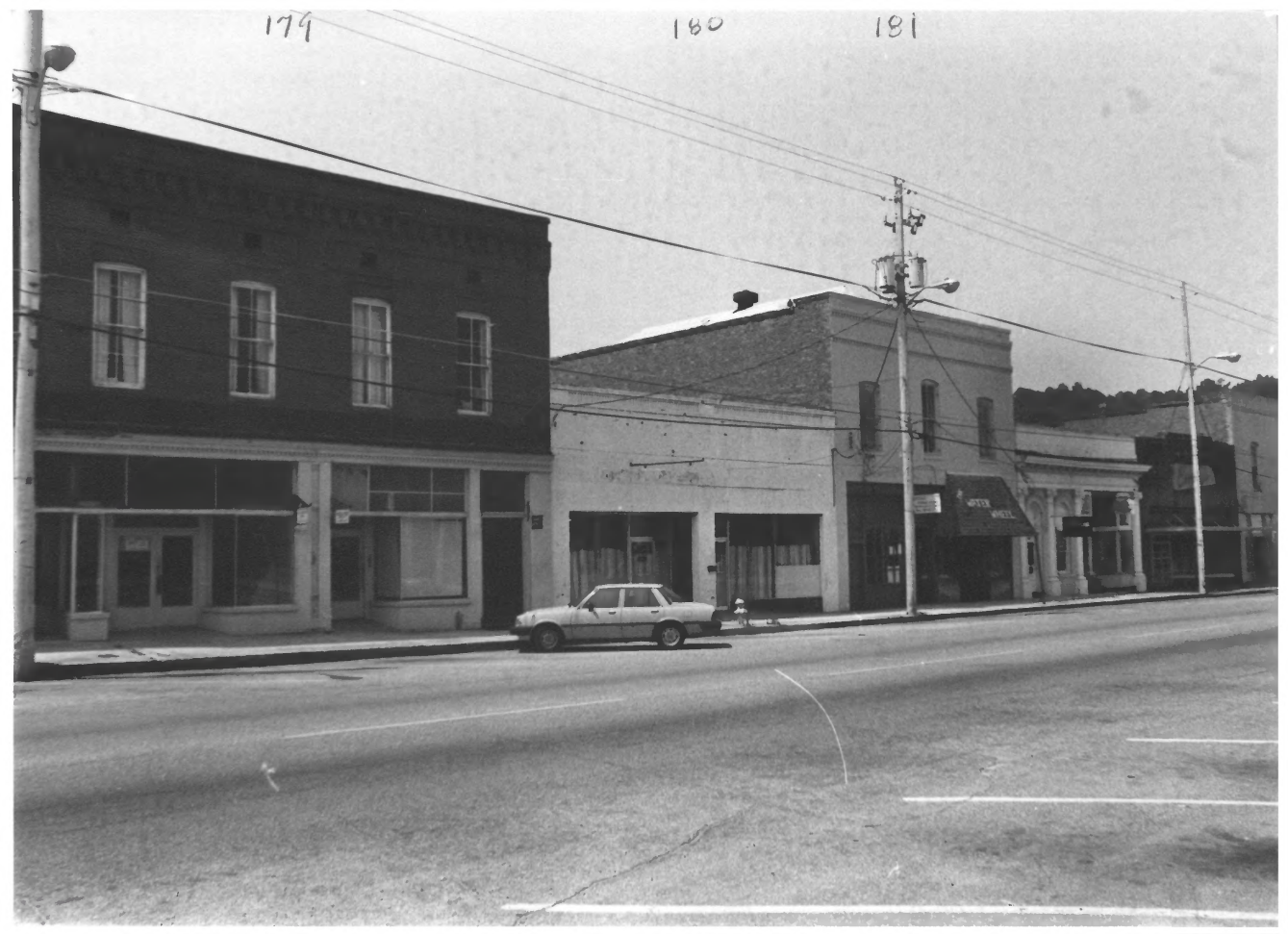


1. Daniel Pratt Historic District
Prattville, Alabama, Autauga County
2. Photographer: John Brown, Jr.
3. Date of photo: Fall 1981--Winter 1982
4. Negative filed with Alabama
Historical Commission
5. View: South front Anthony-Booth-Wilkinson-
Pratt Village (162)
6. Photo number: 26/31

179

180

191



1. Daniel Pratt Historic District
Prattville, Alabama, Autauga County
2. Photographer: John Brown, Jr.
3. Date of photo: Fall 1981-Winter 1982
4. Negative filed with Alabama
Historical Commission
5. View: North front South side Main St.
Walthall-Duncan-Rawlinson-Doster-Robertson
Bldgs.
6. Photo number: 27/31



Daniel Pratt Historic District
Prattville, Alabama, Autauga County

Robert Gamble, May 1984
Alabama Historical Commission

Looking NE toward Old Prattville Mercantile
Company Building (199)

PHOTO NUMBER: 28/31



1. Daniel Pratt Historic District
Prattville, Alabama, Autauga County
2. Photographer: John Brown, Jr.
3. Date of photo: Fall 1981-Winter 1982
4. Negative filed with Alabama
Historical Commission
5. View: North front Bell-Thomas Building
Main Street facing east
6. Photo number: 29/31



1. Daniel Pratt Historic District
Prattville, Alabama, Autauga County
2. Photographer: John Brown, Jr.
3. Date of photo: Fall 1981-Winter 1982
4. Negative filed with Alabama
Historical Commission
5. View: South East front Pratt Cemetery
(209)
6. Photo number: 30/31

DANIEL PRATT,
WAS BORN IN TEMPLE,
NEW HAMPSHIRE,
JULY 20TH 1799,
DIED
MAY 13TH 1873.

BLESSED ARE THE DEAD
WHO DIE IN THE LORD, FOR
THEY REST FROM THEIR
LABORS, AND THEIR WORKS
DO FOLLOW THEM.

ESTHER TICKNOR,
WIFE OF
DANIEL PRATT,
WAS BORN IN
COLUMBIA CONN.
JAN. 24, 1803
DIED
FEB. 14, 1875

EVER SO FEATHER FOR LE
SEEMETH GOOD IN THE
SIGHT.

Daniel Pratt Historic District
Prattville, Alabama, Autauga County

Robert Gamble, May 1984
Alabama Historical Commission

View of Daniel Pratt marker in Pratt Cemetery
(209)

Photo number: 31/31