

United States Department of the Interior
National Park Service

RECEIVED
JAN 13 1992

National Register of Historic Places
Registration Form

NATIONAL
REGISTER

This form is for use in nominating or requesting determinations for individual properties and districts. See instructions in *How to Complete the National Register of Historic Places Registration Form* (National Register Bulletin 16A). Complete each item by marking "x" in the appropriate box or by entering the information requested. If an item does not apply to the property being documented, enter "N/A" for "not applicable." For functions, architectural classification, materials, and areas of significance, enter only categories and subcategories from the instructions. Place additional entries and narrative items on continuation sheets (NPS Form 10-900a). Use a typewriter, word processor, or computer, to complete all items.

1. Name of Property

historic name Bigelow Tavern Historic District

other names/site number N/A

2. Location

street & number 60, 64, and 65 Worcester Street N/A not for publication

city or town West Boylston N/A vicinity

state Massachusetts code 025 county Worcester code 027 zip code 01583

3. State/Federal Agency Certification

As the designated authority under the National Historic Preservation Act, as amended, I hereby certify that this nomination request for determination of eligibility meets the documentation standards for registering properties in the National Register of Historic Places and meets the procedural and professional requirements set forth in 36 CFR Part 60. In my opinion, the property meets does not meet the National Register criteria. I recommend that this property be considered significant nationally statewide locally. (See continuation sheet for additional comments.)

Judith B. McDonough 1/7/92
Signature of certifying official/Title Judith B. McDonough Date Executive Director,
Massachusetts Historical Commission, State Historic Preservation Officer
State of Federal agency and bureau

In my opinion, the property meets does not meet the National Register criteria. (See continuation sheet for additional comments.)

Signature of certifying official/Title _____ Date _____
State or Federal agency and bureau _____

4. National Park Service Certification

I hereby certify that the property is:

- entered in the National Register.
 See continuation sheet.
- determined eligible for the National Register
 See continuation sheet.
- determined not eligible for the National Register.
- removed from the National Register.
- other, (explain): _____

Signature of the Keeper

Date of Action

Beth A. Savage 9/24/92

5. Classification

Ownership of Property

(Check as many boxes as apply)

- private
- public-local
- public-State
- public-Federal

Category of Property

(Check only one box)

- building(s)
- district
- site
- structure
- object

Number of Resources within Property

(Do not include previously listed resources in the count.)

Contributing	Noncontributing	
3	5	buildings
		sites
		structures
		objects
4	5	Total

Name of related multiple property listing

(Enter "N/A" if property is not part of a multiple property listing.)

N/A

Number of contributing resources previously listed in the National Register

0

6. Function or Use

Historic Functions

(Enter categories from instructions)

Domestic/Single dwelling; Hotel

Commerce/Tavern; General Store

Agriculture/Processing; Distillery

Current Functions

(Enter categories from instructions)

Domestic/Single dwelling; Secondary Structure

Recreation/Museum

7. Description

Architectural Classification

(Enter categories from instructions)

Colonial: Georgian

Early Republic: Federal

Vernacular

Materials

(Enter categories from instructions)

foundation Granite

walls Weatherboard

roof Slate; Asphalt

other

Narrative Description

(Describe the historic and current condition of the property on one or more continuation sheets.)

See Continuation Sheets

United States Department of the Interior
National Park ServiceNational Register of Historic Places
Continuation SheetBigelow Tavern Historic District,
West Boylston, MassachusettsSection number 7 Page 1

The Bigelow Tavern Historic District, West Boylston, Massachusetts, containing about 1.6 acres, is located on the east and west sides of Worcester Street. Immediately south of the district along Worcester Street is the town's civic areas including the West Boylston Common, the First Congregational Church (ca. 1900) and the West Boylston Burying Ground (Mount Vernon Cemetery). Adjacent to the district on the north along Worcester Street is a residential area of mostly mid to late 19th century middle-class houses. A late 20th century, two-story multi-family residence stands next door to the tavern on the north.

The district, which is an integral part of the original West Boylston town center, is distinct both visually and historically. The earlier date of construction of the Tavern District buildings is visually obvious in the simple rectangular architectural forms and close eaves of the contributing buildings. Despite their residential appearance (a characteristic of most buildings built for a wide variety of uses before the mid-19th century), the three major buildings within the District all seem to have originally been built for commercial purposes. They all remained in the hands of a single family through four generations (pre-1811 to 1884) and functioned as the town center's only commercial district from as early as 1810-1811 until the mid-19th century when the official town center shifted to the valley. It has been impossible for the present researcher to trace the history of the Bigelow Tavern District property prior to 1811. Currently available documentation seems to indicate, however, that the Bigelow Tavern District was historically distinct in ownership (between 1792 and 1811) from the adjoining Congregational Church property, Burial Ground property and the Town Common property. Only the northernmost section of the present Mt. Vernon Cemetery was taken from the tavern property around the turn of the 20th century when graves from other West Boylston cemeteries were transferred to the old town center during the construction of Wachusett Reservoir.

GENERAL DESCRIPTION

The Bigelow Tavern District consists of three contributing buildings and five non-contributing buildings. Contributing buildings are: Bigelow's Tavern (ca. 1780s-1811), 65 Worcester Street; Bigelow's Tavern District Store (ca. 1790s-1810), 60 Worcester Street and Bigelow's Tavern District Distillery (ca. 1790s-1811), 64 Worcester Street. Non-contributing buildings include: two early to mid-20th century open sheds at 65 Worcester Street, one late 19th-early 20th century enclosed shed at 64 Worcester Street and one enclosed 1980s tool shed at 60 Worcester Street. The present garage on the former distillery property, 64 Worcester Street, was built in the 1920s as a small confectionery store. It is considered non-contributing because it bears no relationship to the early 19th century major period of significance.

On the east side of the street, just north of the Burying Ground, stands the former Bigelow Tavern. Opposite it on the west side of the road, north of the

(continued)

United States Department of the Interior
National Park ServiceNational Register of Historic Places
Continuation SheetBigelow Tavern Historic District,
West Boylston, MassachusettsSection number 7 Page 2

Congregational Church, are a former distillery and a former store building. The tavern building is oriented with its long main facade toward the south, rather than toward the road. Both the distillery and store buildings are oriented with their long main facades to the road.

All three contributing buildings in the area are representative vernacular expressions of late 18th-early 19th century architecture. Exterior features such as proportion, chimney location and mass and ornamental detail make them recognizable as products of the late 18th-early 19th century period. The tavern and store buildings are two-and-a-half story, double pile, gable roofed structures while the distillery has the appearance of a one-and-a-half story, double pile, gable roofed, Cape Cod-type house when seen from the street. The Tavern is both the larger and the more elaborate of the three. It is distinguished by Classical ornamental treatment at its eaves, corners and window caps which relate it to the Georgian and Federal styles. Because of its more massive appearance, large central chimney and solar orientation, it gives the effect of being slightly older than the other two.

The simple architectural forms and close eaves of the contributing buildings suggest a clearly earlier date of construction that distinguishes the Tavern District buildings from later buildings nearby. The areas surrounding the district are visually distinct. They include a late 20th century multi-family residence next door, the mostly mid-to-late 19th century single family residential buildings further north and the Congregational Church, Common and Cemetery to the south. Despite their original commercial purpose, the buildings within the District have a residential appearance which was typical of buildings built for a wide variety of uses before the mid-19th century.

LANDSCAPE

The grounds around the former distillery and store are grown up with trees and shrubbery, which offer those buildings privacy from one another. The open grounds of the former tavern make it more highly visible to automobile traffic. Separated from the cemetery on the south side by a growth of brush, the tavern grounds are open on the north to the grounds of a modern multi-family dwelling that has recently been built on former tavern land.

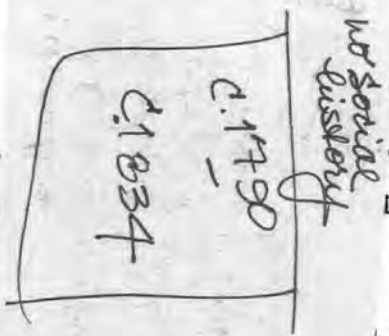
It is likely that when this was a commercial district, during its early 19th century period of greatest significance, the grounds of all three buildings would have been much more open with few trees, little grass, and little attention to landscaping. Photographs of the three buildings made at the turn of the 20th century, after the area had become entirely residential, show more open space around the buildings than today. There was less growth of brush and shrubbery and a larger front yard at the former distillery. The former store had a larger, open front yard with trees at the sides and rear, much as are seen today. Grounds around the former tavern were open with a few more trees and plantings than are seen today and with an English barn on the south

(continued)

United States Department of the Interior
 National Park Service

National Register of Historic Places
 Continuation Sheet

Section number 7 Page 3



c District,
 usetts

side. The existence of a white plank fence probably related to the use of the tavern pro

Bigelow Tavern (ca. 1780-1810)

Bigelow's Tavern is a well-preserved example of vernacular architecture. Its rectangular main body is 28 feet 9 inches by 28 feet 9 inches. Set gable end to the street, the building is a 1/2-story, double-pile, three-bay, center-entry, center-chimney, skived clapboarded structure with its main facade oriented not toward the street but facing south. The building rests on a stone foundation with granite slabs above grade. The massive brick chimney is supported on a round-arched granite vault in the cellar.

The structure is of timber-frame construction. Its high pitched roof is built on the common rafter system with a continuous five-sided ridge pole and wind braces at either end. Throughout the main body of the building, major timbers are hewn, while minor timbers, such as rafters and joists, are mill cut with a reciprocating saw.

Despite the vernacular appearance of the structure, it has a few ornamental features that relate it to the Georgian style. These are the molded roof cornice with gable returns, quoins at each corner of the main body of the house, the strongly projecting window frames and projecting molded window caps. These original features are consonant with a late 18th-early 19th century date of construction. The following features are of a later period and represent alterations to the structure:

Two over two window sash are of late 19th century vintage. Window sash containing multiple lights, an 8/16 or 12/12 configuration, would have been typical of the building's date of construction. The hip-roofed porch across the width of the main facade is a Greek Revival-style addition, apparently made in the mid-19th century. The present main doorframe with short sidelights seems to date from that same remodelling effort.

A one-story ell extends from the east end of the structure. Its westernmost part, measuring 12 feet in length by approximately 12 feet 8 inches in width, is probably original, although it is possible that it is a very early addition. Its five-sided ridgepole and reciprocating-sawn rafters are of the same type used for the main body of the house. Like the main portion of the house, it is sheathed in skived clapboards attached with wrought nails. It is not known what the original use of this portion of the ell might have been. Kitchen ells were not typical until the second quarter of the 19th century. It may be that it served some service or storage function for the tavern. The eastern section of the ell measures 21 feet in length by approximately 12 feet 8 inches in width. The roof ridge of this section is a thin board, while other structural members include reciprocating sawn rafters and joists and

(continued)

United States Department of the Interior
National Park Service

National Register of Historic Places
Continuation Sheet

Section number 7 Page 3

*grandson -
only one specifically
associated
with the property -
not Father of Bigelow
social history -
not*

District,
setts

side. The existence of a white plank fence also probably related to the use of the tavern property

*Period
as said to
1884: not justified*

Bigelow Tavern (ca. 1780-1810)

Bigelow's Tavern is a well-preserved example of late 18th-early 19th century vernacular architecture. Its rectangular main body measures 36 feet 10 inches by 28 feet 9 inches. Set gable end to the street, the tavern is a 2 1/2-story, double-pile, three-bay, center-entry, center-chimney, skived clapboarded structure with its main facade oriented not toward the street but facing south. The building rests on a stone foundation with granite slabs above grade. The massive brick chimney is supported on a round-arched granite vault in the cellar.

The structure is of timber-frame construction. Its high pitched roof is built on the common rafter system with a continuous five-sided ridge pole and wind braces at either end. Throughout the main body of the building, major timbers are hewn, while minor timbers, such as rafters and joists, are mill cut with a reciprocating saw.

Despite the vernacular appearance of the structure, it has a few ornamental features that relate it to the Georgian style. These are the molded roof cornice with gable returns, quoins at each corner of the main body of the house, the strongly projecting window frames and projecting molded window caps. These original features are consonant with a late 18th-early 19th century date of construction. The following features are of a later period and represent alterations to the structure:

Two over two window sash are of late 19th century vintage. Window sash containing multiple lights, an 8/16 or 12/12 configuration, would have been typical of the building's date of construction. The hip-roofed porch across the width of the main facade is a Greek Revival-style addition, apparently made in the mid-19th century. The present main doorframe with short sidelights seems to date from that same remodelling effort.

A one-story ell extends from the east end of the structure. Its westernmost part, measuring 12 feet in length by approximately 12 feet 8 inches in width, is probably original, although it is possible that it is a very early addition. Its five-sided ridgepole and reciprocating-sawn rafters are of the same type used for the main body of the house. Like the main portion of the house, it is sheathed in skived clapboards attached with wrought nails. It is not known what the original use of this portion of the ell might have been. Kitchen ells were not typical until the second quarter of the 19th century. It may be that it served some service or storage function for the tavern. The eastern section of the ell measures 21 feet in length by approximately 12 feet 8 inches in width. The roof ridge of this section is a thin board, while other structural members include reciprocating sawn rafters and joists and

(continued)

United States Department of the Interior
National Park ServiceNational Register of Historic Places
Continuation SheetBigelow Tavern Historic District,
West Boylston, MassachusettsSection number 7 Page 3

side. The existence of a white plank fence along the road at that time was probably related to the use of the tavern property as a farm.

Bigelow Tavern (ca. 1780-1810)

Bigelow's Tavern is a well-preserved example of late 18th-early 19th century vernacular architecture. Its rectangular main body measures 36 feet 10 inches by 28 feet 9 inches. Set gable end to the street, the tavern is a 2 1/2-story, double-pile, three-bay, center-entry, center-chimney, skived clapboarded structure with its main facade oriented not toward the street but facing south. The building rests on a stone foundation with granite slabs above grade. The massive brick chimney is supported on a round-arched granite vault in the cellar.

The structure is of timber-frame construction. Its high pitched roof is built on the common rafter system with a continuous five-sided ridge pole and wind braces at either end. Throughout the main body of the building, major timbers are hewn, while minor timbers, such as rafters and joists, are mill cut with a reciprocating saw.

Despite the vernacular appearance of the structure, it has a few ornamental features that relate it to the Georgian style. These are the molded roof cornice with gable returns, quoins at each corner of the main body of the house, the strongly projecting window frames and projecting molded window caps. These original features are consonant with a late 18th-early 19th century date of construction. The following features are of a later period and represent alterations to the structure:

Two over two window sash are of late 19th century vintage. Window sash containing multiple lights, an 8/16 or 12/12 configuration, would have been typical of the building's date of construction. The hip-roofed porch across the width of the main facade is a Greek Revival-style addition, apparently made in the mid-19th century. The present main doorframe with short sidelights seems to date from that same remodeling effort.

A one-story ell extends from the east end of the structure. Its westernmost part, measuring 12 feet in length by approximately 12 feet 8 inches in width, is probably original, although it is possible that it is a very early addition. Its five-sided ridgepole and reciprocating-sawn rafters are of the same type used for the main body of the house. Like the main portion of the house, it is sheathed in skived clapboards attached with wrought nails. It is not known what the original use of this portion of the ell might have been. Kitchen ells were not typical until the second quarter of the 19th century. It may be that it served some service or storage function for the tavern. The eastern section of the ell measures 21 feet in length by approximately 12 feet 8 inches in width. The roof ridge of this section is a thin board, while other structural members include reciprocating sawn rafters and joists and

(continued)

United States Department of the Interior
National Park ServiceNational Register of Historic Places
Continuation SheetBigelow Tavern Historic District,
West Boylston, MassachusettsSection number 7 Page 4

hewn timbers, are possibly reused. The butted clapboard exterior is attached with cut and wire nails, suggesting a possible mid-19th century construction date with later repairs. Both this physical evidence and documentary evidence suggest that this portion of the ell was built between 1855 and 1870.

A shed is attached to the extreme east end of the ell. Situated perpendicular to the ell, the shed is of the same type of construction as the main body of the house, with heavy hewn major timbers, including a five-sided ridge pole and reciprocating sawn rafters. Maps of West Boylston do not show this structure in its present location until 1870. For this reason, it seems highly possible that the shed is an early building rebuilt here or moved to its present location as part of a mid-19th century remodeling project.

A structure no longer standing once extended from the northeast end of the north side of the building. Other than its depiction on maps in 1855 and 1870, there is no other documentary evidence of its existence. Physical investigation does not suggest precisely where its location might have been. Maps suggest that it was attached to the main body of the building, but clapboard siding in this area appears to be original and no evidence of a door from the existing building to this attached structure has been found. For these reasons, the form and use of this former structure as well as its exact location are unclear.

An early 20th century porch extending from the east end of the main body of the building supports a second-story sunporch. This sunporch is reached through a door in the east wall of the southeast second-floor room of the house.

Distillery (ca. 1790-1811)

When seen from the road, this building has the appearance of a three-bay, center-entry, center-chimney, double-pile, 1 1/2-story, gable-roofed Cape Cod-type house with early 20th century bay windows on either side of the main entrance. Because of the way the ground falls off at the west, the rear (west) and the south side of the building are a full 2 1/2-stories high. The building is 30 feet 7 1/2 inches wide and 24 feet deep. Despite the application of synthetic siding (ca. 1970s-1980s) and the addition of facade bay windows with a porch between them (ca. 1905-1915), the building retains its original silhouette, massive chimney and some 6/6 window sash. Other window sash is mostly 2/2 dating from the early 20th century.

Turn-of-the-century photographs indicate that the structure originally had a five-bay main facade, a three-bay rear facade, 6/9 window sash in most windows, and 6/6 sash in the attic. A door, already blocked in at the turn of the century, was originally located in the center of the rear facade.

The main floor, entered from the east entrance, consists of five rooms--two

(continued)

United States Department of the Interior
National Park ServiceNational Register of Historic Places
Continuation SheetBigelow Tavern Historic District,
West Boylston, MassachusettsSection number 7 Page 5

front rooms and three across the back. The above-grade cellar is divided into four rooms. The deep reveals of the window openings at this level suggest that the exterior walls of this entire level are constructed of stone. An interior dividing wall running the full east-west length of the cellar is of brick. It is attached to the south side of the central chimney. Timber frame structural elements visible in the unfinished northeast room at this level are similar to those seen in the Bigelow Tavern. Major structural elements are hewn, while joists and flooring are mill cut with a reciprocating saw. The above-described characteristics of this building are consistent with a late 18th-early 19th century date of construction.

Further physical investigation will be necessary to determine what part of the internal division is original to the building's use as a distillery. Fireplaces and fireplace surrounds that are in place on the street-level floor seem to date from the pre-1818 adaptation of the building to residential use or later.

One unusual feature, the purpose of which has not yet been identified, is part of the structure of the central chimney in the northeast cellar room of the building. About three and a half feet wide and about four feet high, this feature has the form of the interior of a round-arched brick apse. To its rear (west of it) is a brick recess, also part of the chimney structure, with built in shelves. Because this building has been identified as having served as a distillery, it seems possible that this mystery feature might be the remains of the furnace of a still. Descriptions of still furnaces suggest that brick enclosures were built around the still with a firebox underneath. The remains of a coat of mortar that exist around the lower portion of the concave form correspond to descriptions of mortar coatings on still furnaces. No illustrations of still furnaces have been found from the early 19th century that show an opening for the still that is as tall as this or that has a vaulted top as is seen in the brick remains here. Further study is necessary to determine the original form and significance of this feature. Research has uncovered no other identified existing New England distilleries with which to compare either the building form or this brick feature.

Store (ca. 1790-1810?)

This 2 1/2-story, double pile, gable-roofed, five-bay, center-entry, double-chimney clapboarded structure with a one-story wing on the south side may have been built as a store. The main body of the building measures 36 feet 5 3/4 inches by 20 feet 5 1/4 inches while the wing measures 13 feet 5 inches wide and 13 feet 11 inches deep. Like the other two structures in the district, it has its main entrance in the long side, rather than the gable end. Resting on a stone foundation, with a cellar under the northern half of the structure, the store building is of timber-frame construction. Like the other two buildings in the district, its major timbers are hewn while the minor ones are mill cut with a reciprocating saw. Details such as strongly

(continued)

United States Department of the Interior
National Park ServiceNational Register of Historic Places
Continuation SheetBigelow Tavern Historic District,
West Boylston, MassachusettsSection number 7 Page 6

projecting window frames at the second floor level, projecting cornice and gable returns, skived clapboards and double chimneys suggest a late 18th-early 19th century date of construction.

It is not clear what the original articulation was of the main facade. The present five-bay arrangement on the ground floor of the facade may not have been original, although it dates at least to before ca. 1900. A turn-of-the-century photograph shows the present articulation but with a pent roof across the width of the main facade at the top of the first-floor level. It is possible that during the period that it was used as a store, the pent roof was in place and the facade windows were larger. Larger windows were common for the fronts of stores during the early 19th century. The present mortise and tenon wing appears to be the northernmost section of a longer attached structure seen in the turn-of-the-century photograph.

The present arrangement of the interior ranges a large front room and a narrow back room on either side of a central stair hall. On the second floor, the arrangement is similar but with two large rooms in front and three narrow rooms across the back. The interior arrangement, the fenestration and a divided access to the cellar all express a division of function in the building. The present interior arrangement suggests that living quarters may have occupied one half of the building and the store the other. A kitchen fireplace with bake oven exists in the north ground-floor front room, suggesting that the north side of the building might have been an apartment of the storekeeper. There is no fireplace in the rooms on the south side of the ground floor, indicating that the chimney on that side may have served a heating stove only. Stores were commonly heated by stoves by the 1820s and 1830s. Further physical examination is necessary to understand how much of the present interior dates from the store period and how much might date from the later adaptation of the building to residential use.

Windows on the ground floor all the way around the building are less strongly projecting and slightly different in their form from the upstairs windows. This fact hints that they date from later periods than the upper floor windows and suggests that the fenestration may have been changed when the building was converted to residential use. Descriptions of early 19th century stores indicate that side walls of the main sales room of a typical store had no windows to allow for shelf space for merchandise. If this were the case here, that might explain why there are windows of a later period on some of the ground-floor sides.

Former Barn (no longer extant) (late 18th-early 19th century)

Until destroyed by fire in the mid-20th century, a small, gable-roofed English barn with vertical siding stood south of the tavern building. Its size and type suggest that it was probably built in the late 18th or early 19th century. It is believed to have been the same barn that was standing there at

(continued)

United States Department of the Interior
National Park ServiceNational Register of Historic Places
Continuation SheetBigelow Tavern Historic District,
West Boylston, MassachusettsSection number 7 Page 7

the time of the meetinghouse fire across the street in 1831. Items salvaged from the 1831 fire were said to have been brought to this barn. Its location and appearance are known through a turn of the century photograph of the property. Set approximately thirty feet south of the present shed, its door was placed asymmetrically in the long side, facing the road. Its rear wall was more or less on a line with the rear of the present shed. At the turn of the 20th century, a cellar was reached through a large entrance on the south side where the ground was lower.

Archaeological Description

While no prehistoric sites are currently recorded in the district, it is possible that sites are present. Two sites are recorded within the general area (within one mile). The physical characteristics of the property, a well-drained terrace adjacent to a tributary stream flowing from Carrolls Pond to Wachusett Reservoir, indicate favorable locational criteria for native settlement and subsistence activities. Given the above information, the size of the district (1.6 acres) and the impact of historic development within the district, a moderate potential exists for recovering significant prehistoric sites.

There is a high potential for significant historic archaeological remains within the district. Further documentary research, archaeological survey and testing can determine the locations of potential outbuildings and occupational-related features (trash pits, privies, wells) associated with the tavern, distillery and store. In particular, a structure no longer extant is reported on the north side of the tavern, and a barn is known to have been destroyed by fire to the south.

(end)

8. Statement of Significance

Applicable National Register Criteria

(Mark "x" in one or more boxes for the criteria qualifying the property for National Register listing.)

- A** Property is associated with events that have made a significant contribution to the broad patterns of our history.
- B** Property is associated with the lives of persons significant in our past.
- C** Property embodies the distinctive characteristics of a type, period, or method of construction or represents the work of a master, or possesses high artistic values, or represents a significant and distinguishable entity whose components lack individual distinction.
- D** Property has yielded, or is likely to yield, information important in prehistory or history.

Criteria Considerations

(Mark "x" in all the boxes that apply.)

Property is:

- A** owned by a religious institution or used for religious purposes.
- B** removed from its original location.
- C** a birthplace or grave.
- D** a cemetery.
- E** a reconstructed building, object, or structure.
- F** a commemorative property.
- G** less than 50 years of age or achieved significance within the past 50 years.

Areas of Significance

(Enter categories from instructions)

- Architecture
- Commerce
- Exploration and Settlement
- Social History

Period of Significance

ca. 1790-1884

Significant Dates

1810-1831

1835-1884

Significant Person

(Complete if Criterion B is marked above)

N/A

Cultural Affiliation

N/A

Architect/Builder

N/A

Narrative Statement of Significance

(Explain the significance of the property on one or more continuation sheets.) See Continuation Sheets

9. Major Bibliographical References

Bibliography

(Cite the books, articles, and other sources used in preparing this form on one or more continuation sheets.)

Previous documentation on file (NPS):

- preliminary determination of individual listing (36 CFR 67) has been requested
- previously listed in the National Register
- previously determined eligible by the National Register
- designated a National Historic Landmark
- recorded by Historic American Buildings Survey # _____
- recorded by Historic American Engineering Record # _____

Primary location of additional data:

- State Historic Preservation Office
- Other State agency
- Federal agency
- Local government
- University
- Other

Name of repository:

Massachusetts Historical Commission

10. Geographical Data

Acreage of Property 1.6 acres

UTM References

(Place additional UTM references on a continuation sheet.)

1	1 9	2 7 0 8 6 0	4 6 9 3 9 1 0
	Zone	Easting	Northing
2	1 9	2 7 0 9 0 0	4 6 9 3 9 1 0

3	1 9	2 7 0 9 0 0	4 6 9 3 9 0 0
	Zone	Easting	Northing
4	1 9	2 7 0 9 6 0	4 6 9 3 8 9 0

See continuation sheet

Verbal Boundary Description

(Describe the boundaries of the property on a continuation sheet.) See Continuation Sheet

Boundary Justification

(Explain why the boundaries were selected on a continuation sheet.) See Continuation Sheet

11. Form Prepared By

name/title Susan McDaniel Ceccacci, Architectural Historian with Betsy Friedberg, NR Director

organization Massachusetts Historical Commission date January 1992

street & number 80 Boylston Street telephone (617) 727-8470

city or town Boston state MA zip code 02116

Additional Documentation

Submit the following items with the completed form:

Continuation Sheets

Maps

A **USGS map** (7.5 or 15 minute series) indicating the property's location.

A **Sketch map** for historic districts and properties having large acreage or numerous resources.

Photographs

Representative **black and white photographs** of the property.

Additional items

(Check with the SHPO or FPO for any additional items)

Property Owner

(Complete this item at the request of SHPO or FPO.)

name _____

street & number _____ telephone _____

city or town _____ state _____ zip code _____

Paperwork Reduction Act Statement: This information is being collected for applications to the National Register of Historic Places to nominate properties for listing or determine eligibility for listing, to list properties, and to amend existing listings. Response to this request is required to obtain a benefit in accordance with the National Historic Preservation Act, as amended (16 U.S.C. 470 *et seq.*).

Estimated Burden Statement: Public reporting burden for this form is estimated to average 18.1 hours per response including time for reviewing instructions, gathering and maintaining data, and completing and reviewing the form. Direct comments regarding this burden estimate or any aspect of this form to the Chief, Administrative Services Division, National Park Service, P.O. Box 37127, Washington, DC 20013-7127; and the Office of Management and Budget, Paperwork Reductions Projects (1024-0018), Washington, DC 20503.

8. Statement of Significance

Applicable National Register Criteria

(Mark "x" in one or more boxes for the criteria qualifying the property for National Register listing.)

- A** Property is associated with events that have made a significant contribution to the broad patterns of our history.
- B** Property is associated with the lives of persons significant in our past.
- C** Property embodies the distinctive characteristics of a type, period, or method of construction or represents the work of a master, or possesses high artistic values, or represents a significant and distinguishable entity whose components lack individual distinction.
- D** Property has yielded, or is likely to yield, information important in prehistory or history.

Criteria Considerations

(Mark "x" in all the boxes that apply.)

Property is:

- A** owned by a religious institution or used for religious purposes.
- B** removed from its original location.
- C** a birthplace or grave.
- D** a cemetery.
- E** a reconstructed building, object, or structure.
- F** a commemorative property.
- G** less than 50 years of age or achieved significance within the past 50 years.

Narrative Statement of Significance

(Explain the significance of the property on one or more continuation sheets.)

See Continuation Sheets

9. Major Bibliographical References

Bibliography

(Cite the books, articles, and other sources used in preparing this form on one or more continuation sheets.)

Previous documentation on file (NPS):

- preliminary determination of individual listing (36 CFR 67) has been requested
- previously listed in the National Register
- previously determined eligible by the National Register
- designated a National Historic Landmark
- recorded by Historic American Buildings Survey # _____
- recorded by Historic American Engineering Record # _____

Areas of Significance

(Enter categories from instructions)

Architecture _____

Commerce _____

Exploration and Settlement _____

Period of Significance

c. 1790-c. 1834

Significant Dates

1811-1822

Significant Person

(Complete if Criterion B is marked above)

N/A

Cultural Affiliation

N/A

Architect/Builder

N/A

Primary location of additional data:

- State Historic Preservation Office
- Other State agency
- Federal agency
- Local government
- University
- Other

Name of repository:

Massachusetts Historical Commission

10. Geographical Data

Acreeage of Property 1.6 acres

UTM References

(Place additional UTM references on a continuation sheet.)

1	1 9	2 7 0 8 6 0	4 6 9 3 9 1 0
	Zone	Easting	Northing
2	1 9	2 7 0 9 0 0	4 6 9 3 9 1 0

3	1 9	2 7 0 9 0 0	4 6 9 3 9 0 0
	Zone	Easting	Northing
4	1 9	2 7 0 9 6 0	4 6 9 3 8 9 0

See continuation sheet

Verbal Boundary Description

(Describe the boundaries of the property on a continuation sheet.) See Continuation Sheet

Boundary Justification

(Explain why the boundaries were selected on a continuation sheet.) See Continuation Sheet

11. Form Prepared By

name/title Susan McDaniel Ceccacci, Architectural Historian with Betsy Friedberg, NR Director

organization Massachusetts Historical Commission date January 1992

street & number 80 Boylston Street telephone (617) 727-8470

city or town Boston state MA zip code 02116

Additional Documentation

Submit the following items with the completed form:

Continuation Sheets

Maps

A **USGS map** (7.5 or 15 minute series) indicating the property's location.

A **Sketch map** for historic districts and properties having large acreage or numerous resources.

Photographs

Representative **black and white photographs** of the property.

Additional items

(Check with the SHPO or FPO for any additional items)

Property Owner

(Complete this item at the request of SHPO or FPO.)

name _____

street & number _____ telephone _____

city or town _____ state _____ zip code _____

Paperwork Reduction Act Statement: This information is being collected for applications to the National Register of Historic Places to nominate properties for listing or determine eligibility for listing, to list properties, and to amend existing listings. Response to this request is required to obtain a benefit in accordance with the National Historic Preservation Act, as amended (16 U.S.C. 470 et seq.).

Estimated Burden Statement: Public reporting burden for this form is estimated to average 18.1 hours per response including time for reviewing instructions, gathering and maintaining data, and completing and reviewing the form. Direct comments regarding this burden estimate or any aspect of this form to the Chief, Administrative Services Division, National Park Service, P.O. Box 37127, Washington, DC 20013-7127; and the Office of Management and Budget, Paperwork Reductions Projects (1024-0018), Washington, DC 20503.

United States Department of the Interior
National Park ServiceNational Register of Historic Places
Continuation SheetBigelow Tavern Historic District,
West Boylston, MassachusettsSection number 8 Page 1

The Bigelow Tavern Historic District, West Boylston, Massachusetts, retains integrity of location, design, setting, materials, workmanship and association with West Boylston's early development. It fulfills Criteria A and C of the National Register of Historic Places on the local level. The buildings in the district composed a major part of the original West Boylston town center and are today the earliest remaining buildings in the Common area. Representative of the first concentrated commercial growth in the town center, these buildings have survived as important physical evidence of the town's early history and of its initial development patterns in the years around the time of its incorporation in 1808. It is also significant as the only surviving early commercial neighborhood in the town. Even though commercial development occurred at an early date in the valley section of West Boylston, buildings in that entire area were obliterated by the creation of Wachusett Reservoir. The Bigelow Tavern Historic District contains rare examples of early West Boylston commercial buildings of three different kinds: the town's only remaining tavern building, probably its only remaining early 19th century store and its only remaining distillery (one of only a few surviving buildings in the state identified as having served as small distilleries.)

The Bigelow Tavern Historic District is particularly important architecturally for the Bigelow Tavern itself, which is the most elaborate, best preserved and most architecturally significant of the three buildings included therein. Among only a few highly ornamented buildings existing in West Boylston in its day, it is the most elaborate example of late 18th-early 19th century architecture known to survive in the town today. Beaman's Tavern (1763) and the first West Boylston Meetinghouse (1794), neither of which are still standing, were probably the town's two most imposing structures in the late 18th and early 19th centuries. By comparison, Bigelow's Tavern is smaller, less massive and less stylish. Its compact form and central chimney give it a sort of vernacular primness and an understatement that neither of the other two buildings possessed because of their greater ornament and more dramatic silhouettes. Nonetheless, it appears to have held its own among the remainder of the buildings of its time.

Turn-of-the-century photographs of West Boylston buildings that are no longer standing set the tavern building in perspective. Examples of similar house types once existed but were less elaborate than Bigelow's Tavern. Window caps were smaller, cornices appear to have been simpler and the major ornamental emphasis was on the entrance. No other example of the use of quoins is known. The ornament of Bigelow's Tavern appears to have been larger, finer and more extensive than that of other comparable buildings. It was also among the most elaborate, but not the largest, when compared with identified examples of 18th and early 19th century taverns (both those surviving and those no longer surviving) in neighboring towns such as Boylston, Shrewsbury, Holden and Paxton. As the 19th century progressed, West Boylston's

(continued)

United States Department of the Interior
National Park ServiceNational Register of Historic Places
Continuation SheetBigelow Tavern Historic District,
West Boylston, MassachusettsSection number 8 Page 2

architecture, like that of the rest of the state and nation, became more stylish and more highly ornamented. Bigelow's Tavern is representative of the town's finest early buildings.

The district is important for its long association over three generations (pre-1811 to 1905) with a single important local family (the Beaman family and their descendants in the Bigelow, Temple and Spofford families.) Association of the district with these families relates it to the lives of persons who played important roles in the earliest days of the town. The most important the "Father of West Boylston", and his grandson, Ezra Bigelow, the chief player in the period of greatest prosperity of the district.

The Bigelow Tavern Historic District conveys a sense of historical and architectural unity through its overall cohesiveness of design, setting, materials, workmanship and association. Several characteristics of the district contribute to the image and feeling of a small early 19th century New England town. Typical of early settlements are the vernacular simplicity of the broad, bulky building forms; the massive central chimneys; varied building orientation (the south-facing orientation of the tavern building juxtaposed with the two road-facing buildings across from it); and the clustering of all three structures close to the road in a sort of interdependent relationship with one another, yet still some distance apart.

The earliest settlement within the limits of the present town of West Boylston occurred about 1720 in the southeastern section of town. Even as late as the early 19th century, the town was sparsely settled and was largely agricultural. Farming was good, due in part to rich intervale land along the Nashua, Stillwater and Quinepoxet rivers. Because of its location on waterpower sites, the area developed small water-powered industries early in its history. A sawmill, and probably also a gristmill, was operating at least as early as the 1750s. In 1793, in the territory that is now West Boylston, a sawmill, a corn mill with two pair of stones, a fulling mill, a clothier's works and a potash works existed. In 1804 the first cotton spinning mill in of these family members are the original owner, Major Ezra Beaman, known as Worcester County was established here. By the time of the incorporation of the town in 1808, there were one cotton mill, two gristmills, two sawmills, one clothier's works, one tannery, four blacksmiths, one cabinetmaker's shop, two book-binderies, three stores and one tavern.

The present boundaries of West Boylston encompass land that was taken from three separate towns: Boylston, Holden and Sterling. The community's first meetinghouse was built several years before the establishment of the town to serve families living in the western part of Boylston and in parts of Holden, Sterling and Worcester that were distant from their meetinghouses. Built in 1794, the meetinghouse was dedicated in 1795. The incorporation of the new town of West Boylston made the meetinghouse the focal point of the new

(continued)

United States Department of the Interior
National Park ServiceNational Register of Historic Places
Continuation SheetBigelow Tavern Historic District,
West Boylston, MassachusettsSection number 8 Page 3

community. A common was laid out around the meetinghouse, and this area became the official town center. It was here that the Bigelow Tavern Historic District grew up. Although no precise date can be given to any of the buildings in the area, this commercial district seems to have appeared as a result of the establishment of the meetinghouse and the incorporation of the town.

Histories record no particular reason for the choice of site for the meetinghouse. Although this area was situated on a major route of transit through town (the Worcester-Lunenburg County Road, 1752), it appears not to have developed as a trading node until after the construction of the meetinghouse. A new road (now Central Street near the intersection with Worcester Street and Newton Street further west) that connected two county roads near the meetinghouse seems to have been put through at about the time of the construction of the meetinghouse. It would seem that without such a crossroad there would have been little encouragement of trade. The area was certainly not chosen as the location of the meetinghouse because it was densely populated. As late as 1818, there was only one house facing onto the common, while its nearest neighbors were some distance away. Central location for residents in all parts of the proposed town and the visual desirability of the setting were likely important factors in the meetinghouse site selection. The location is at a topographical high point overlooking the valley below. This site was described in the late 19th century as "much the best location in town for a public building."

Within three years after the town was incorporated, by 1811, the Bigelow Tavern Historic District appears already to have been established as West Boylston's first town center commercial district. A tavern and, apparently, also a distillery and store were in operation near the meetinghouse by 1811. Architectural characteristics and material evidence suggest that the tavern building may have been built before the distillery and store buildings, but stylistic characteristics and physical details of all three buildings suggest a probable late 18th-early 19th century period of construction. There is a local belief that Bigelow's Tavern was built as early as the 1780s by Dr. Amariah Bigelow, son-in-law of Ezra Beaman and father of Ezra Bigelow. No documentary evidence has been found to suggest that this is true. All currently available evidence, both documentary and physical, suggests that the establishment of commercial enterprises at this location was closely tied to the fixing of the meetinghouse as the official center of the community.

Once the meetinghouse was in use and Newton Street had been opened, a tavern at this location would seem to have been viable, both for its convenience to travelers on two county roads and for its availability to church-goers to warm and refresh themselves between church services at Sunday "noonings." At this same date, a store at this site could have been considered feasible due to its location on a main thoroughfare, in the center of town, near the meetinghouse

(continued)

United States Department of the Interior
National Park ServiceNational Register of Historic Places
Continuation SheetBigelow Tavern Historic District,
West Boylston, MassachusettsSection number 8 Page 4

and in an area where a concentration of families lived, even though they were sparsely settled. Once the tavern and store were in existence, the distillery would seem to have been strategically placed to serve both the tavern and store, since each had high volume sales in alcoholic beverages.

During the 17th, 18th and early 19th centuries, the use of alcoholic beverages was an integral part of daily life in America. Beer or hard cider was drunk by the whole family with every meal. Alcohol was viewed as a necessity to good health. It was common to take a "healthful" dram or a "strengthening" drink. Hard liquor was also a traditional "strengthening" companion to certain types of heavy labor, such as building stone walls, harvesting and barn and house raisings. The period from the 1790s through the early 1830s was a time of particularly heavy drinking in the United States. The extensive use of alcohol was part of life in West Boylston during the same period, just as it was in other parts of the country. In 1861, West Boylston historian Benjamin F. Keyes recalled:

In 1822, West Boylston could boast of its seven respectable grocers and taverners, all licensed to sell liquors. Within a stone's throw of the church was the firm [Bigelow Tavern District Store] of Farnum and Seth White, who used to sell one hundred gallons of St. Croix and New England rum per week; while no one of the half-a-dozen other retailers had any cause to complain that they lacked anything of their full share of the public partonage....Indeed the use of liquor was so nearly universal fifty years ago, that there were only two families in town which got along without it....Fifty years ago and previous to that time, large quantities of cider were made in the town which was not often sold for less than \$1.00 and sometimes for \$2.00 or more per barrel, consequently it was a profitable production. It was then generally considered a necessary article for common use, and almost every family used several barrels annually. Most of the large farmers considered a cider mill to be a necessary appendage to their farm and would feel themselves greatly deficient if not in possession of this convenience.

Taverns were an important institution in American towns and cities from the 17th century through the early years of the 19th century. Taverns served as the local bulletin board, news exchange and community center. Notice of town meetings, elections, new laws, auction notices and bills of sale were posted at taverns. Taverns satisfied a variety of social needs. Not only were they places to buy a drink; they were also places to meet others, exchange news and discuss politics and religion. Most drinking done outside the home was done in taverns. W. J. Rorabaugh's studies of tavern ledgers have shown that during the period 1810-1835, a typical customer frequented a tavern once a week. For travelers, taverns provided food, drink and lodging, all necessary and welcome after a day of riding over rough roads. Despite the importance of the tavern to the traveler, its significance to the local townspeople as a place of social, political and business exchange was much greater.

(continued)

United States Department of the Interior
National Park ServiceNational Register of Historic Places
Continuation SheetBigelow Tavern Historic District,
West Boylston, MassachusettsSection number 8 Page 5

Many New England taverns, such as West Boylston's Bigelow Tavern, also served another important community function, that of providing respite from the cold of unheated meetinghouses between Sunday church services. This tradition began as early as the 17th century when innholders permits were often granted on the condition that the tavern be located near the meetinghouse for the convenience of churchgoers.

Some towns, such as nearby Holden, provided "noon houses." Others, like West Boylston, had no noon houses. Instead, private families and taverns served as places where churchgoers could warm themselves and socialize. Rev. J. H. Fitts in 1868 described the role of Bigelow's Tavern in the winter noonings of fifty years earlier in West Boylston:

A place of frequent resort was the dwelling of Mr. John Smith, where the capacious kitchen fire afforded genial warmth. So too, the tavern of Ezra Bigelow, Esq., where blazing fires in parlors below and rooms above were made ready for the shivering guests. And if the truth must be told, I suppose they sometimes partook liberally of the gentleman's "good cheer."

Tavernkeepers lived in the tavern. Especially in small towns, tavernkeepers were typically important persons in the community, often holding public office. In the case of West Boylston's two taverns, this was true. Major Ezra Beaman (1736-1811), who operated the town's oldest tavern, Beaman's Tavern, had served in the Revolutionary War and was a large landholder. He was probably the most influential man in the area during his time. In addition to keeping a tavern, he also owned a sawmill, gristmill, store, potash works and the waterpower site on which the first cotton spinning mill in Worcester County was built in 1804. Due to his large landholdings, he was the wealthiest man in the community. The total value of his real estate at his death was \$37,055.50. Beaman is called the "Father of West Boylston" for his important role in the creation of the town and its early history. Resulting from a dispute over the location of the new meetinghouse in the Town of Boylston, Major Beaman led a successful effort to build a separate meetinghouse for the southwestern portion of the town and later to incorporate the new Town of West Boylston in 1808. After the establishment of the town, Beaman held three offices simultaneously. He served as Town Treasurer, Chairman of the Board of Selectmen and as Representative to the Legislature from 1808 to 1811. Major Beaman was the original owner of the property encompassed in the Bigelow Tavern Historic District.

Ezra Bigelow (1782-?), who operated Bigelow's Tavern from 1811 to 1822, was a member of two influential local families, the Bigelows and Beamans. His father, Dr. Amariah Bigelow, had been the first physician in the area. His grandfather, Deacon Amariah Bigelow, was an early settler in the area, a deacon in the church of Shrewsbury and a landholder. On his mother's side, he was the grandson of Major Ezra Beaman. His mother's second husband, John

(continued)

United States Department of the Interior
National Park ServiceNational Register of Historic Places
Continuation SheetBigelow Tavern Historic District,
West Boylston, MassachusettsSection number 8 Page 6

Temple, was also a member of a family of early settlers of the area. He was a large landholder and a man active in town affairs. Temple was a Selectman in 1809 and Chairman of the Board of Selectmen from 1813 through 1818. Although current research has not made it clear how wealthy Ezra Bigelow was in his own right, he certainly benefitted from the wealth and influence of his family. Like his various family relations, Ezra Bigelow was also active in town affairs. He served as West Boylston Town Clerk from 1813 through 1822, as Selectman from 1814 through 1818 and as Chairman of the Board of Selectmen from 1820 through 1822. Ezra Bigelow is associated with the Bigelow Tavern Historic District during its most prosperous period.

Ezra Bigelow took out an innholder's permit in 1811. It is presumed that he began operating the tavern near the meetinghouse at this time. It is not known whether a tavern might have been operated here illegally prior to this date or whether the building might have been standing at an earlier date, possibly serving some other use before being converted to a tavern. In 1811, the tavern property, and the property on which stand the distillery and the store across the street, belonged not to Bigelow but to Major Ezra Beaman, his grandfather. Major Beaman was both an influential man and a man with a good business sense. It is likely that he had an important role both in planning this business enterprise and in his grandson's decision to operate a tavern and a store near the meetinghouse. After Beaman's death in 1811, the property passed to his daughter, Persis Beaman Bigelow Temple, the mother of Ezra Bigelow. It remained in her possession until her own death in 1832. Ezra Bigelow retained his innholder's license through 1822, after which he moved away from West Boylston.

The golden age of Bigelow's Tavern appears to have been limited to the early years of West Boylston's history as a town, and most specifically to its period of operation by Ezra Bigelow (1811-1822). During his regime, it seems that the related distillery and store were both also in operation, at least for a short period of time. After Bigelow left town, the tavern seems to have been less prosperous. Between 1823 and 1831, it was operated by five different persons, each for only a brief a time. This lack of continuity suggests a distinct lack of success. In the years 1829 and 1832, no innholder's license was taken out at all for the tavern. After 1833 no further licenses were taken out for it at all.

The temperance movement probably had a notable effect on the apparent lack of success of the tavern after Ezra Bigelow left. As long as alcohol consumption was an integral part of daily life, the tavern probably prospered, but the old way of life began to change in West Boylston sometime between about 1811 and 1821. Cider production for towns in the area was at its peak in 1811 (figures for West Boylston were not reported for 1811). By 1821 there was already a notable drop in production. Cider is a good indicator of changes in alcohol consumption because it was the most commonly used alcoholic beverage in the

(continued)

United States Department of the Interior
National Park ServiceNational Register of Historic Places
Continuation SheetBigelow Tavern Historic District,
West Boylston, MassachusettsSection number 8 Page 7

region. The force that began to change the old habits of drinking was a powerful temperance movement that took a strong hold in New England after 1800. The Massachusetts Temperance Society was formed in 1813. The strength and rapidity with which the movement took hold can be seen in events in nearby Worcester. In Worcester, the first temperance society, composed entirely of members of the First Congregational Church, was established in 1830. Within only two years, the movement had gained an astounding number of supporters. By 1832, the Worcester Temperance Society claimed almost half of the adult population of that town. Although current research has not focused on the temperance movement in West Boylston, it seems clear that its effects were being strongly felt after 1827. The number of retail liquor licenses in the town dropped suddenly from seven to two in the four-year period between 1827 and 1831. The town's last retail license was issued in 1833 and the last innholder's license in 1841. By 1842 neither innholder's licenses nor retail licenses were issued for West Boylston. The effect of the temperance movement was countywide and dramatic. After 1843 innholders were no longer licensed to sell intoxicating liquors. By 1845 only four towns in Worcester County listed retailers licensed to sell liquor. They were Lancaster (1), Millbury (1), Southboro (1) and Worcester (4). Taverns, tavernkeeping and the widespread sale and heavy consumption of alcohol in the 18th century style were dead by the early 1840s.

Beaman's Tavern in the valley is believed to have continued to operate as a hotel, no longer serving liquor, for some time after 1842. It is not clear whether Bigelow's Tavern was operated as a hotel after it ceased to hold an innholder's license to purvey intoxicating liquors in 1834.

Like taverns, early 19th century stores were community gathering places and places for the exchange of news and information. More importantly, general stores were major centers of commerce in country towns. Stores were important in the lives of townspeople because they were the source of many of the necessities and luxuries of daily life. In the days before a strong temperance movement, when alcoholic beverages were an integral part of daily life, one of a store's largest items of trade was beverage alcohol. Stores dealt in general merchandise ranging from foodstuffs to liquor to household wares, yard goods, articles of clothing, hardware, books, stationery, drugs and dyes. The general store brought to country towns items from farflung parts of the world: the West Indies, Europe, England, China and Ceylon. In this way the store brought the "wide world" to those who had never been out of their towns. Stores were important in the local agricultural economy for their ability to convert surplus produce into consumer goods. Storekeepers regularly took items in trade, working as middlemen between their customers and their market contacts outside the community. Farmers and farmwives traded cheese, eggs, cider and other farm produce that was, in turn, traded or sold to other customers or to city markets. Outwork products of home industry, such as braided straw mats and palm leaf hats, made by local women were

(continued)

National Register of Historic Places
Continuation Sheet

Bigelow Tavern Historic District,
West Boylston, Massachusetts

Section number 8 Page 8

encouraged by storekeepers as part of his complex trade relations. Their trade at the store provided women outworkers with a buying power they would not otherwise have had.

In order to offer the wide variety of goods required in a general store, storekeepers travelled twice a year to Boston or New York to trade at the wholesale markets. Because of their knowledge of the outside world, their important role in their communities, and their high level of contact with local people, storekeepers often held public office and were considered important men in town.

Stores were common adjuncts to taverns in New England during the period of Bigelow's Tavern, but many more were individual enterprises. At the time of the incorporation of West Boylston in 1808, there were three stores for a population of under 600. By 1827 with a population of over 800, the number had risen to seven. As the temperance movement took hold in the town, the number of stores holding retail liquor licenses dropped suddenly. In 1831, with the town population now at 1,055, only two stores held retail liquor licenses. The actual number of stores in existence in that year is not known. By 1833 there was only one remaining store that held a liquor license. No retail liquor licenses were issued for West Boylston after that year. Current research has uncovered no documentation for the number or percentage of stores that survived the curtailment of liquor sales.

A general store in the Bigelow Tavern District must have begun operation about 1810, when Ezra Bigelow took out a retailer's license. A store at this location seems to have continued under various managements through at least 1832. Bigelow and his partner, Peter Holmes, may have remained in business until 1813 or longer. Peter Holmes held a retailer's license from 1811 through 1813. Two brothers, Farnum and Seth White, ran a store at this location from 1817 to 1827. The last store identified at this site was A. S. Gibbs & Company. Having started out in 1828, Aaron Gibbs took out his last retailer's license in 1832. Once liquor was no longer sold in stores, it was not necessary to take out a license for retailing; therefore, there is no convenient way to know whether or not a store might have remained in business at this site for some time afterward. This building was still referred to as a store in the transfer of the property to Persis Beaman Bigelow Temple's daughters in 1835.

Although few details are known about the actual business conduct at the store in the Bigelow Tavern Historic District, it can be assumed that it fit the pattern of other general stores of the day. The longest term operation of a store at this site appears to have been that of Farnum and Seth White. Like other stores in West Boylston, the Whites sold large quantities of alcoholic beverages: 100 gallons of St. Croix and New England rum per week in 1822.

(continued)

National Register of Historic Places Continuation Sheet

Bigelow Tavern Historic District,
West Boylston, Massachusetts

Section number 8 Page 9

Born in 1781 in Uxbridge, Massachusetts, Farnum White may never have lived in West Boylston. He was living in Holden as early as 1813 and died there in 1843. With a partner, he had purchased Holden's earliest cotton spinning mill in 1810 and sold it in 1814. The store in West Boylston may have been operated by Seth White, with a major part of the capital supplied by Farnum White.

Seth White was born in Douglas, Massachusetts, in 1795 and died in Holden, where he was operating a store in the mill village of Eagleville, in 1837. He was active in local affairs while living in West Boylston, serving as Town Treasurer from 1825 through 1829, as Selectman in 1827 and as Town Clerk from 1830 through 1836.

A distillery may have been in operation in the Bigelow Tavern District as early as 1811. Peter Holmes, Ezra Bigelow's partner in the store business, paid the estate of Major Ezra Beaman on January 18, 1812, "for the use of the Distillery 28 1/2 days at \$1.00 per day" during the previous year. It is assumed that the distillery referred to is the distillery in question. It is not clear exactly when the structure was built or how long a period of time it was in active use as a distillery. If Benjamin Keyes' reminiscences are correct, it had already been converted to residential use by 1818, at which time it served as the residence of Seth White, partner in the store of Farnum and Seth White next door. When the property was transferred to Persis Beaman Bigelow Temple's daughters in 1835, this building was described as a dwelling. It appears to have continued to serve as a private dwelling continuously since that time.

Although present research has uncovered no other surviving examples of distilleries in the region, distilleries are known to have been common. Cider distilleries, much less complicated than grain distilleries, sometimes existed on individual farms. Distilleries were often associated with taverns during the late 18th-early 19th century period. In Charlton, Massachusetts, a distillery was constructed near the Rider Tavern in 1792. Archaeological excavations by Old Sturbridge Village have uncovered evidence of the existence of a late 18th century still house at the Stratton Tavern in Northfield, Massachusetts. No documentation has been found to indicate that a distillery was associated with West Boylston's other tavern, Beaman's Tavern.

Distilleries were common enough in Massachusetts in the late 18th and early 19th centuries for there to have been an entry for distilleries listed on the Massachusetts Decennial Census forms. Although the neighboring towns of Boylston and Holden are recorded in the censuses from the late 18th century through 1860 as having had no distilleries, the town of Shrewsbury had two in 1811 and one 1821. The same census lists no distilleries in West Boylston in 1811. This figure may not reflect the actual number in existence because figures were apparently unavailable for several West Boylston entries in

(continued)

National Register of Historic Places
Continuation Sheet

Bigelow Tavern Historic District,
West Boylston, Massachusetts

Section number 8 Page 10

1811. One distillery was listed for the town in 1821. A distillery is said to have existed at another location in the town in 1818. This may be the distillery recorded in the 1821 census, since the distillery at Bigelow's was no longer in operation at this date.

Certain characteristics of the distillery building in the Bigelow's Tavern District fit, or are similar to, specifications for distillery buildings published in early 19th century works on distilling, such as Hall's The Distiller. The situation of the distillery building, alongside a stream was a requisite for any distillery as is the case with Bigelow's.

For the simpler cider distillery, a water source was the only major requirement except for a copper boiler, a head and worm. For the distilling of grain, a water source was also required, but specifications for a grain distillery were more complex. Recommended dimensions for a grain distillery producing eight hogsheads per day were 24 by 40 feet. The dimensions of the Bigelow Tavern Distillery are 24 feet by 30 feet 7 1/2 inches, somewhat smaller. It was recommended that the house be of stone and 1 1/2 stories high. The distilling operation was to be on the ground floor, and the upper level was to be used for the storage of grain. The lower portion of Bigelow's Distillery, the part that was probably used for the actual distilling process, appears to be of stone. The upper portion is 1 1/2 stories high--larger than called for. This fact may be due in part to the way the land falls off. A 1 1/2 story upper portion may have been desirable to give it a proper appearance from the road.

It is not presently known what sort of distilling was done at Bigelow's, yet the similarity of the characteristics of this building to specifications for grain distilleries suggests a possible grain distilling operation. It is not known what the common product was of small distilleries in this region. Only a few references to the products of specific distilleries has been found. The distillery associated with the Rider Tavern in Charlton housed a gin still, a brewery, malthouse and corn mill under the same roof, while in Northfield the Stratton Tavern distillery produced apple cider brandy.

In August of 1831 fire destroyed the West Boylston Meetinghouse. After the meetinghouse fire, the importance of the original town center waned and a settlement in the valley known as Central Village became the true center of West Boylston. In addition to the loss of the meetinghouse, several other factors were significant contributors to the decline of the original town center and its commercial district. One was probably the loss of a strong manager, when tavern keeper Ezra Bigelow moved away from West Boylston in 1823. Another was probably the decreasing use of alcoholic beverages in the 1820s and 1830s due to a growing temperance movement in Massachusetts. Since both the tavern and the store depended upon the sale of liquor, they must have already been suffering a decline in business even before the meetinghouse

(continued)

National Register of Historic Places Continuation Sheet

Bigelow Tavern Historic District,
West Boylston, Massachusetts

Section number 8 Page 11

burned. Another contributor was an ideological split in the church congregation which caused a less numerous faction to rebuild on the site of the original meeting house while the more numerous faction built a separate church in the more populous valley settlement. Probably the single most important factor causing the eclipse of the center commercial district was the increasing strength of manufacturing in West Boylston and the geographical distance of the town center from the sites of manufacturing.

The unfortunate fate of the official town center would seem to have been decided very early on. If the decision of where to locate the official town center had been based on practical considerations, the site that was chosen probably would never have been selected. A site in the valley would have been a more likely choice due to transportation routes and existing commercial enterprises in the area. Before the establishment of the town and the official town center, the valley site already had the characteristics of a trading node. In 1795 when the meetinghouse was built, there seems to have been no commercial activity or concentrated settlement in the area around the meetinghouse site. At the same time, there were three county roads intersecting in the valley near a bridge on the Nashua River. Already near this intersection were commercial enterprises that regularly attracted people. The Beaman Tavern stood at the crossroads. A sawmill, a gristmill and a fulling mill were only a short distance away. In 1804, before the establishment of the town, the inauguration of the first cotton spinning mill in Worcester County at Lower Village heralded the changes that the Industrial Revolution would bring to the valley section of West Boylston.

During the 19th century, increasing industry along the town's waterpower sites caused greater development in the valley than at the hilltop site of the original center. Mill villages grew up around textile mills at Lower Village, Central Village, Harrisville and Oakdale. As early as 1826, there were 200 inhabitants in Lower Village and 120 in Upper Village (Harrisville). In addition to the commerce created by the mills, the town also boasted:

five stores for retailing goods; two houses of entertainment...; a Post Office; four blacksmith shops; a triphammer; scythe factory; tanyard; cabinetmaker; wheelwright; six shoemakers; and a bookbinder; two gristmills, one of them running three pairs of stones; three sawmills; clothing works and carding machine.

With the exception of the one tavern and one store found in the Bigelow Tavern Historic District near the Common, most of the town's commercial enterprises seem to have been located in the valley. Current research indicates that the commercial district around the Common never extended beyond the Bigelow Tavern Historic District. The Common area also remained relatively sparsely settled when compared to areas in the valley. It is no surprise, then, that at the time of the rebuilding of the Congregational meetinghouse in 1832, a site in

(continued)

National Register of Historic Places
Continuation Sheet

Bigelow Tavern Historic District,
West Boylston, Massachusetts

Section number 8 Page 12

the valley was chosen over the original Common site. The Unitarian faction that had split from the Congregationalists rebuilt on the old Common site, but their presence was not sufficient to retain life in the official town center. Small in size, this congregation never became very strong and never had a permanent pastor except for a few years between 1859 and 1862. Throughout its history, the building was largely in disuse.

After the loss of the meetinghouse in 1831, the tavern appears not to have remained in business after ca. 1833 when the last innholder's license for it was taken out. The 1835 transfer of the property to the daughters of Persis Temple mentions the "tavern property," while the other buildings in the district are referred to as a "dwelling" and a "store." This language suggests that the tavern may have been vacant and no longer used as a tavern at that time while the store may still have been in operation.

The three buildings in the Bigelow Tavern Historic District remained in the hands of Mrs. Temple's daughters, Olive Temple Moore Cutting and Mary B. Temple Spofford, until the mid 1880s, when both died, Mrs. Cutting seems to have lived in the former distillery. She appears to have rented out the store building until it was sold in 1870. Mrs. Spofford apparently lived in the former tavern after about 1852, when Mrs. Cutting surrendered her trust for her sister's portion "whereas Mary Spofford stands in need of said property...that she may have management of same and avails thereof for her own benefit."

By a strange turn of fate, the same facts of geography that had led to the more extensive development of West Boylston's valley settlement during the 19th century caused the reinstatement of the old town center as the true center of the community at the turn of the 20th century. The very waterways that had made the valley attractive to industry also made it an ideal site for a reservoir to supply water for a growing turn-of-the-century Boston. Beginning in 1895 the Metropolitan Water Board purchased all the mills, buildings and property along the town's three rivers. Soon, both the town's industry and nearly the entire valley settlement that had grown up around it were obliterated. Buildings were demolished, some were moved away, topsoil was removed, and in 1905 the valley was inundated to form Wachusett Reservoir.

With the basis of its economy removed and its population depleted, West Boylston never acquired much of a commercial district in the reinstated town center. The original town center has remained essentially residential and institutional to the present day. The former commercial node at the Bigelow's Tavern Historic District, which had long since been converted to residential use by the time of the building of the reservoir, remained so. Mid-to-late 20th century commercial development of West Boylston has been much more extensive but has so far had little effect on the existing buildings in the town center. The present garage to the residence in the former distillery was

(continued)

National Register of Historic Places
Continuation Sheet

Bigelow Tavern Historic District,
West Boylston, Massachusetts

Section number 8 Page 13

built in the 1920s as a small confectionery store. Ice cream, sodas, candy and gasoline were sold in this shingled, hip-roofed building between the 1920s and the early 1940s by Harry "Dutchy" Clayton, who lived in the former distillery. This was the only case in which commercial activity returned to the Bigelow Tavern Historic District after the old town center was reinstated. Because modern development has been confined largely to areas along major automobile routes outside the center and to shopping centers along these routes, most of the town center has survived intact. In this way, the Bigelow Tavern Historic District has been preserved as an example of the town's earliest development--one of the town's few remaining touchstones to its commercial past.

The period of greatest significance for the district extends from ca. 1811 to 1905, the era during which it was associated with Beaman-Bigelow-Temple-Spofford families. Even though the former store building was sold out of the family in 1870 and the tavern property in 1884, the former distillery remained in the hands of Sarah M. Spofford, the widow of a family descendant, Oliver M. Spofford, until 1905.

During this period of significance for the district, the area served commercial, agricultural and residential purposes. From the period from ca. 1811 into the 1840s, it seems to have served largely commercial, yet not solely commercial use. The tavern served both as a tavern and as the residence of the tavernkeeper. After about 1818, the former distillery served solely as a residence. From the 1840s through 1905, the use seems to have become more strictly residential, although not entirely so. From as early as 1883 through at least 1906, the former store was listed in West Boylston tax records as "house and shop," with one-third acres of land. It is not known whether the "shop" was a commercial operation or, if so, precisely what kind of operation it might have been.

The tavern property may have been used for small-scale agriculture during this latter period, as it may have also during its earlier history as a tavern. An 1884 inventory of the tavern property made upon the death of Mary B. Spofford shows evidence of farming. A harrow and farming tools valued at \$15.00, one lot of hay, \$7.00 and one cow, \$40.00, were enumerated. At that time Mrs. Spofford's real estate included the house, barn and three acres. In apparently separate locations, she also held five acres of woodland, eleven acres of mowing and one-third acre of meadow. It is not clear how these pieces of property were actually used and what their relationship was to the present house and its surrounding land in any farming she may have done. It seems likely that any agricultural products derived from the other pieces of land would have been stored in the barn or in the storage or work rooms of the house.

The former tavern property continued to be used intermittently for small-scale

(continued)

National Register of Historic Places Continuation Sheet

Bigelow Tavern Historic District,
West Boylston, Massachusetts

Section number 8 Page 14

agriculture during the early and mid-20th century, after the period of greatest historical significance. It is not clear whether John W. Bacon, who owned the property from 1895 through 1912, ever actually used it for agricultural purposes. West Boylston tax records list his holdings in 1905 as house, barn, windmill, shed and henhouse. No animals or fowl are listed, however. For a short period during the 1920s, a later owner, Mary M. Shepard, had cows, which her son, Lawrence, raised without pasturage on the 2 1/2-half acre lot. Young Shepard, who later went on to study agriculture at the Massachusetts State Normal School in Amherst (now UMass), Class of 1931, sold milk to neighbors on a small scale. From 1946 through 1960, the property was operated by Lawrence Shepard as a turkey farm, with a population of possibly as many as 500 to 600 turkeys. West Boylston tax records show that during the 1920s the Claytons, who lived in the former distillery, also kept "40 fowl." This small agricultural enterprise may have provided eggs for sale in the market they ran next door to their house.

During the latter part of the 20th century, the district has been two thirds residential. The former tavern property is the exception. In 1965, after the death of her husband in 1960, the widow of Lawrence Shepard sold it to the West Boylston Masonic Charity and Educational Association with life estate for herself. In 1983 the house and a portion of the former 2 1/2 acres was purchased by the West Boylston Historical Society as its headquarters. The remainder of the land was sold for the construction of a multifamily dwelling that now stands northeast of the former tavern building (outside the nominated district).

Archaeological Significance

Since patterns of prehistoric occupation in West Boylston are poorly understood, any surviving sites would be significant. Sites in this area offer the potential for a study of native settlement and subsistence on the Worcester Plateau and the relationship of sites in that area, within the Nashua River drainage, to prehistoric site distribution in the Merrimack River Valley. Sites in this area may contribute to a better understanding of prehistoric trade and cultural contacts either to the north and the Merrimack River, the Charles River drainage to the east, Blackstone drainage to the south or Connecticut River drainage to the west.

Historic archaeological remains described above have the potential to document the growth of a late 18th and early 19th century rural commercial development as well as provide detailed information on the social, cultural and economic lives of individuals who operated and frequented the tavern, store and distillery. Each of these structure appears to have been built solely for commercial purposes. Archaeological and historical data together can further clarify the origins of this development as well as provide additional

(continued)

United States Department of the Interior
National Park Service

National Register of Historic Places
Continuation Sheet

Bigelow Tavern Historic District,
West Boylston, Massachusetts

Section number 8 Page 15

information on the only development that occurred in this area and its relationship to local and regional economies. Archaeological research can also provide data specific to the function and construction of individual buildings within the district. For example, analysis of artifact and structural remains associated with the tavern could determine the date of construction for the shed attached to the extreme east end of the tavern and indicate, whether it was originally constructed there or was moved there. Similar remains can also contribute towards an understanding of the function and construction of the structure that once extended from the north side of the tavern. Archaeological data can also help better establish the construction date for the tavern as well as store and distillery. Historic archaeological survivals may also provide information on the extent to which the distillery was used for that purpose. Research may also determine at what point the tavern, distillery and store reverted to residential use. Overall, each structure, particularly the tavern, can also provide data on the lives of residents in the area since that structure was a community focal point in late 18th/early 19th century communities.

(end)

National Register of Historic Places
Continuation Sheet

Bigelow Tavern Historic District,
West Boylston, Massachusetts

Section number 9 Page 1

9. Major-Bibliographical Reference

Maps and Atlases

1795. Sawyer, Aaron, surveyor. Map of Boylston. Massachusetts Archives Maps & Plans # 1252.
1830. Wood, William H., surveyor. A Map of West Boylston. Massachusetts Archives Maps & Plans # 2151.
1855. Map of West Boylston. Philadelphia: Richard Clark, 1855.
1870. Beers, F. W. Atlas of Worcester County, Massachusetts. New York: F. W. Beers & Co., 1870.
1893. Shedd & Earle, Engrs. West Boylston Waterworks Plan. 1893.
1898. Richards, L.J. Atlas of Worcester County, Massachusetts. Philadelphia: L.J. Richards Co., 1898.

Vital Records

- Rice, Franklin P., ed. Vital Records of West Boylston, Massachusetts, To the End of the Year 1849. Worcester: Franklin P. Rice, 1911.
- Birth, Marriage, and Death Records, post 1849, Town of West Boylston, Office of the Town Clerk.
- Rice, Franklin P., ed. Vital Records of Holden, Massachusetts, To the End of the Year 1849. Worcester: Franklin P. Rice, 1911.

Public Documents

Records of the Worcester County Court of Common Pleas and Worcester County Commissioners', Inholders and Retailers Licenses, 1731-1847.

Worcester Country Registry of Probate, Probate Records for
Ezra Beaman Olive Cutting
Amariah Bigelow Mary B. Spofford
Dr. Amariah Bigelow John W. Bacon
Abel Bigelow
Ezra Bigelow
Seth White
Farnum White

Worcester Country Registry of Deeds, deeds for Tavern District properties and others

National Register of Historic Places
Continuation Sheet

Bigelow Tavern Historic District,
West Boylston, Massachusetts

Section number 9 Page 2

Major Bibliographical Reference (cont'd)

Transcription of Massachusetts Decennial Census, Old Sturbridge Village
Research Department, Sturbridge, Massachusetts, for years 1781-1860 (for
West Boylston, Boylston, Shrewsbury, and Holden)

Tax Records, Town of West Boylston

Oral Interviews

Telephone interview, S. Ceccacci with Mrs. Lawrence Shepard, June 27, 1991.

National Register of Historic Places
Continuation Sheet

Bigelow Tavern Historic District,
West Boylston, Massachusetts

Section number 10 Page 1

10. UTM References (cont'd)

E. 19 270970 4693860
F. 19 270880 4693810

Verbal Boundary Description

The boundaries of the Bigelow Tavern Historic District are indicated on the accompanying sketch map by a heavy line outlining the boundaries of the contributing properties. The property lines and street boundaries on this map have been traced from the current West Boylston Assessor's Map and are believed to be accurate.

Boundary Justification

The boundaries of the district include the entire present lots of the three contributing properties. Limited to property immediately surrounding the buildings, the present 1.6 acres was all historically part of the Bigelow Tavern District. Portions of the original land holdings accompanying the buildings, approximately 22 acres, have been dispersed in several parcels since the late 19th century.

DISTRICT DATA SHEET
Bigelow Tavern Historic District
West Boylston, Massachusetts

<u>Map#</u>	<u>MHC#</u>	<u>Historic Name</u>	<u>Address</u>	<u>Date</u>	<u>Status</u>	<u>Style</u>	<u>Resource</u>
1	16	Bigelow Tavern	65 Worcester St.	1780-1811	C	Georgian-Federal	B
1a	--	shed	" " "	20th c.	NC	astylistic	B
1b	--	shed	" " "	20th c.	NC	astylistic	B
4	---	Barn Site	" " "	18th c.	C	---	Si
2	18	Store	60 Worcester St.	1790s-1810	C	Federal Vernacular	B
2a	--	shed	" " "	late 20th c.	NC	astylistic	B
3	17	Distillery	64 Worcester St.	1790s-1811	C	Cape Cod	B
3a	--	Clayton's Store	" " "	ca. 1920s	NC	Shingle Vernacular	B
3b	--	shed	" " "	20th c.	NC	astylistic	B

TOTAL RESOURCES

3 Contributing Buildings
1 Contributing Site
5 Noncontributing Buildings

JAN 13 REC'D

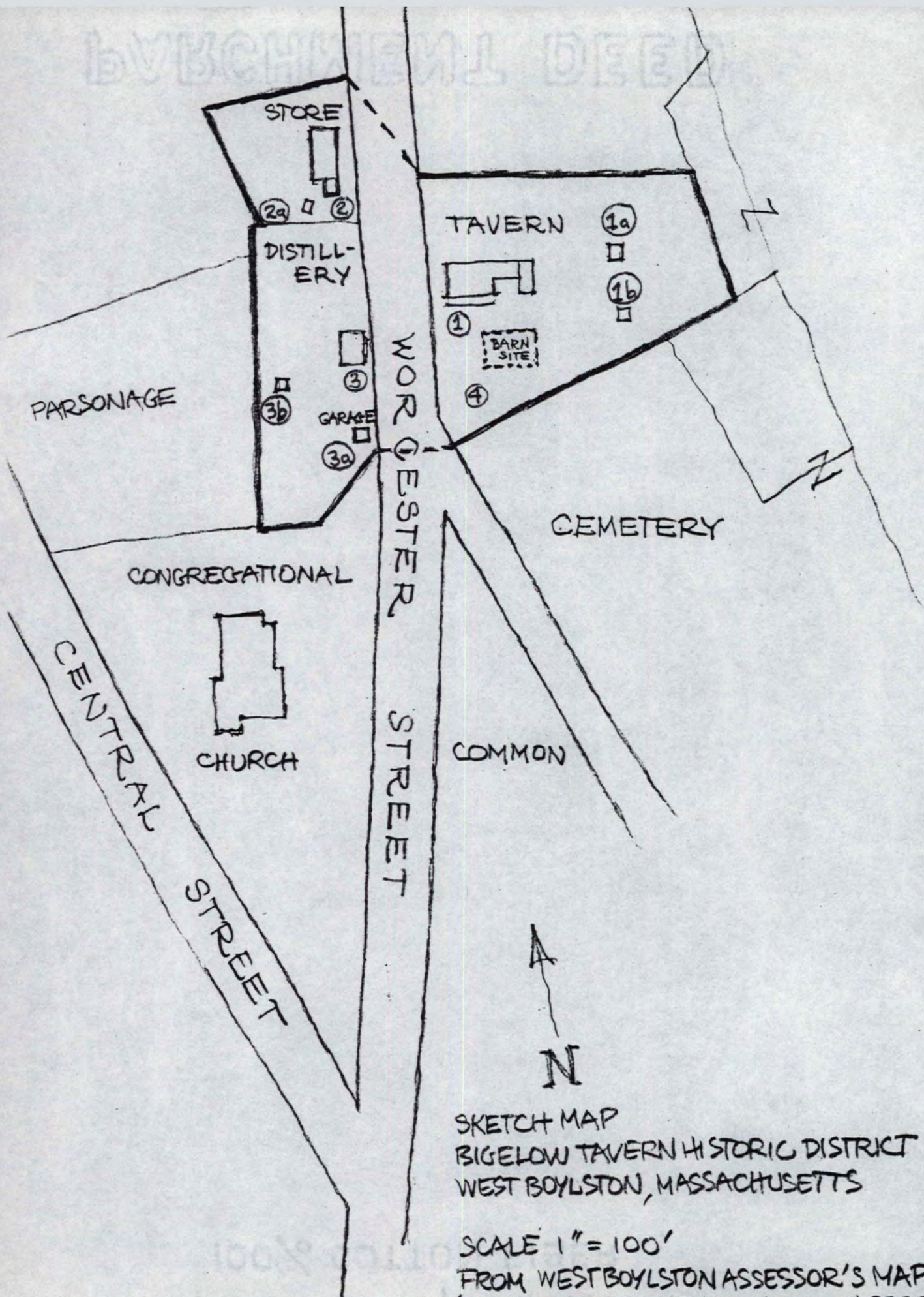
DISTRICT DATA SHEET
 Bigelow Tavern Historic District
 West Boylston, Massachusetts

<u>Map#</u>	<u>MHC#</u>	<u>Historic Name</u>	<u>Address</u>	<u>Date</u>	<u>Status</u>	<u>Style</u>	<u>Resource</u>
1	16	Bigelow Tavern	65 Worcester St.	1780-1811	C	Georgian-Federal	B
1a	--	shed	" " "	20th c.	NC	astylistic	B
1b	--	shed	" " "	20th c.	NC	astylistic	B
4	---	Barn Site	" " "	18th c.		---	
2	18	Store	60 Worcester St.	1790s-1810	C	Federal Vernacular	B
2a	--	shed	" " "	late 20th c.	NC	astylistic	B
3	17	Distillery	64 Worcester St.	1790s-1811	C	Cape Cod	B
3a	--	Clayton's Store	" " "	ca. 1920s	NC	Shingle Vernacular	B
3b	--	shed	" " "	20th c.	NC	astylistic	B

TOTAL RESOURCES

3 Contributing Buildings

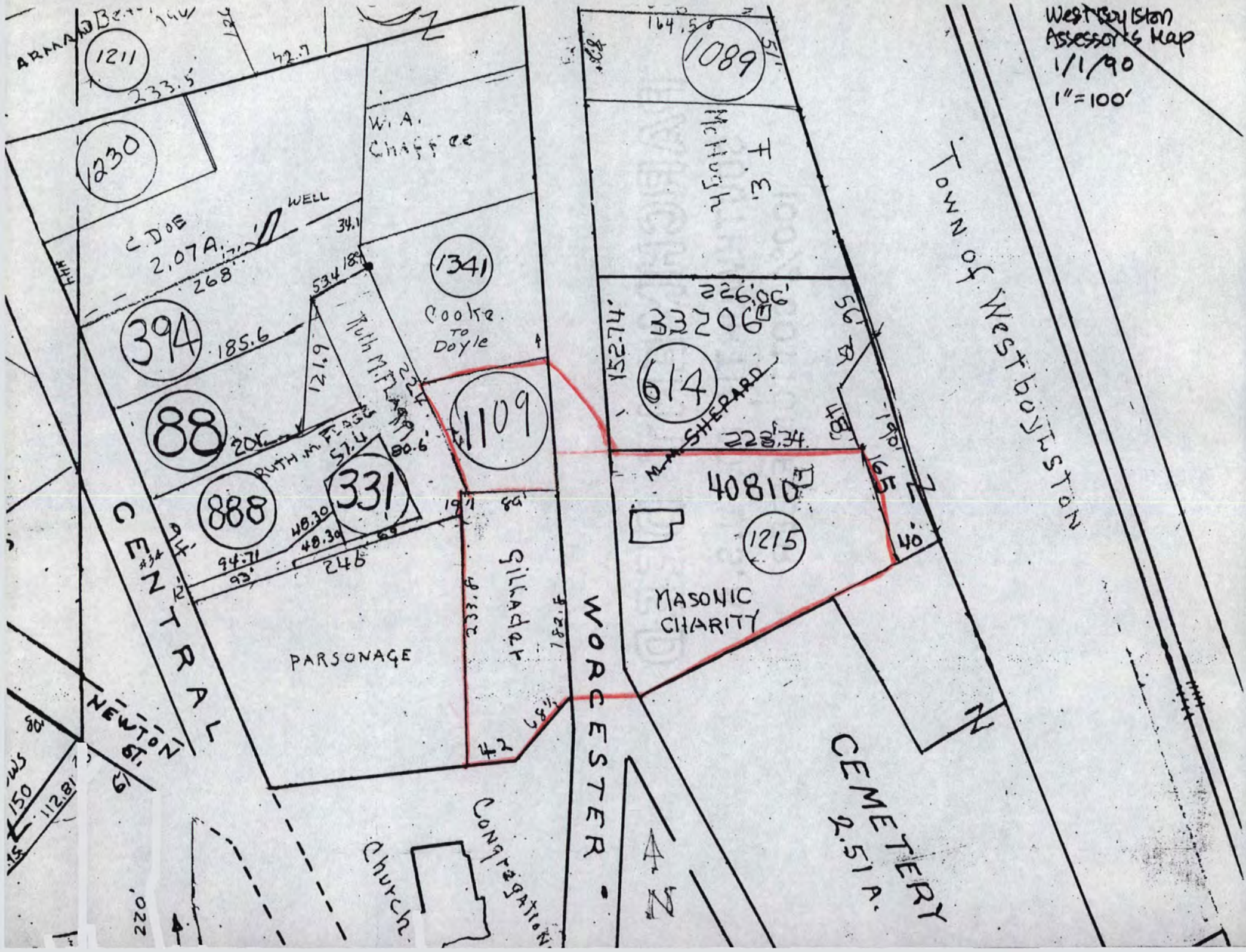
5 Noncontributing Buildings



SKETCH MAP
 BIGELOW TAVERN HISTORIC DISTRICT
 WEST BOYLSTON, MASSACHUSETTS

SCALE 1" = 100'
 FROM WEST BOYLSTON ASSESSOR'S MAP
 (WITH ADDITION OF BUILDINGS IN APPROXIMATE
 LOCATIONS BY S. CECCACCI 6/90)

West Boylston
Assessor's Map
1/1/90
1"=100'





WEST BOYLSTON.
JOHN W. BACON. 1830

BIGELOW TAVERN, 65 WORCESTER STREET
BIGELOW TAVERN HISTORIC DISTRICT
WEST BOYLSTON, MASSACHUSETTS
PHOTO: METROPOLITAN DISTRICT OF WATER, CA. 1900
ORIGINAL: WEST BOYLSTON HISTORICAL COMMISSION
VIEW: FRONT OF COMPLEX, LOOKING NORTHEAST. BARN IS ON RIGHT.

ALBUQUERQUE HISTORICAL SOCIETY
METROPOLITAN DISTRICT OF WATER



W. RES. WEST BOYLSTON.
JOHN W. BACON. 148-

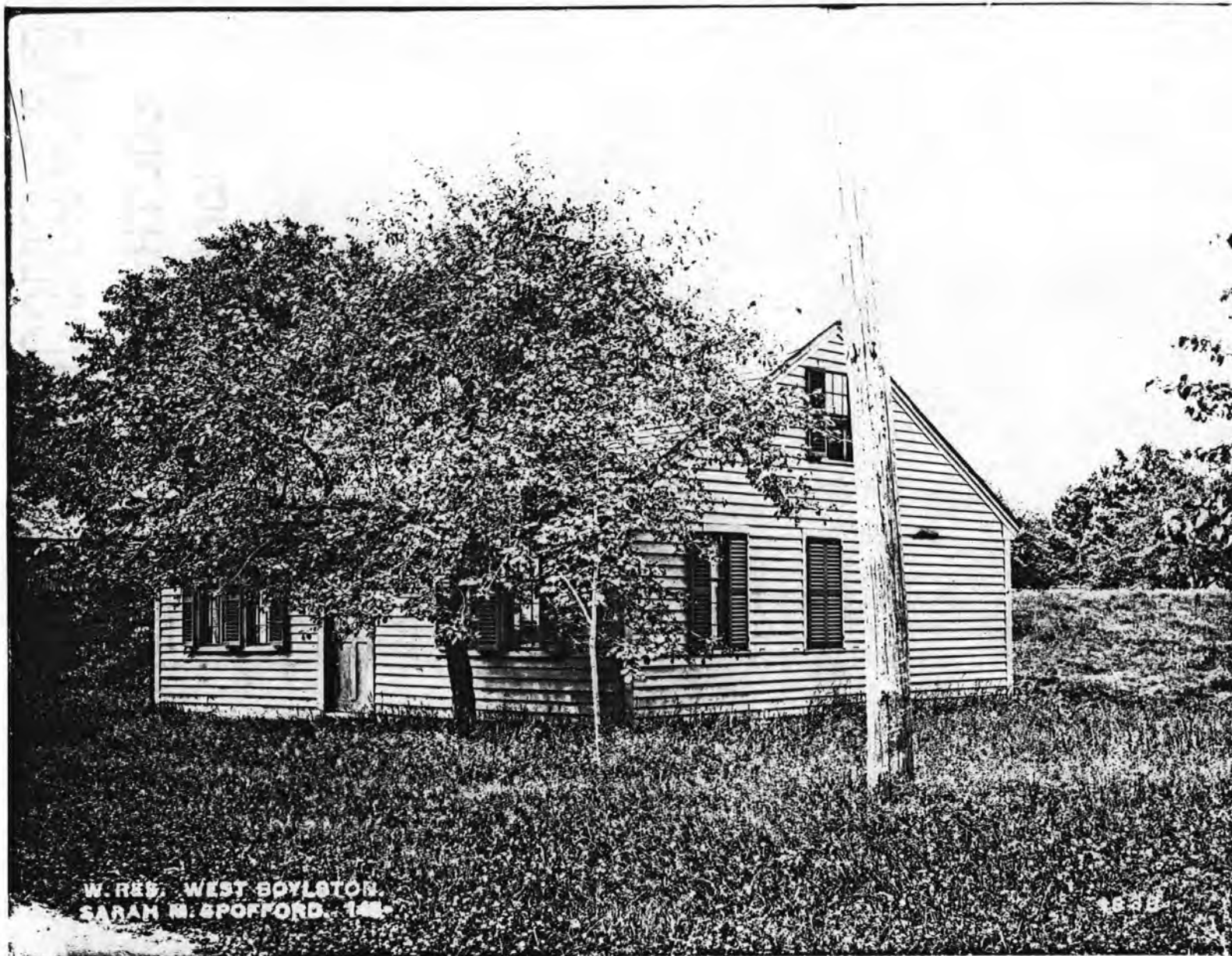
BIGELOW TAVERN, 65 WORCESTER STREET
BIGELOW TAVERN HISTORIC DISTRICT
WEST BOYLSTON, MASSACHUSETTS
PHOTO: METROPOLITAN DISTRICT OF WATER, CA. 1900
ORIGINAL: WEST BOYLSTON HISTORICAL COMMISSION
VIEW: REAR OF COMPLEX, LOOKING SOUTHWEST, L TO R: BARN, SHED, WING, MAIN BODY OF BUILDING



BIGELOW TAVERN DISTRICT STORE, 60 WORCESTER STREET
BIGELOW TAVERN HISTORIC DISTRICT
WEST BOYLSTON, MASSACHUSETTS
PHOTO: METROPOLITAN DISTRICT OF WATER, CA. 1900
ORIGINAL: WEST BOYLSTON HISTORICAL COMMISSION
VIEW: SOUTH AND EAST (MAIN) FACADES, LOOKING NORTHWEST



BIGELOW TAVERN DISTRICT STORE, 60 WORCESTER STREET
BIGELOW TAVERN HISTORIC DISTRICT
WEST BOYLSTON, MASSACHUSETTS
PHOTO: METROPOLITAN DISTRICT OF WATER, CA. 1900
ORIGINAL: WEST BOYLSTON HISTORICAL COMMISSION
VIEW: NORTH AND WEST FACADES, LOOKING SOUTHEAST



W. RES. WEST BOYLSTON.
SARAH M. SPOFFORD. 1900

1878

BIGELOW TAVERN DISTRICT DISTILLERY, 64 WORCESTER STREET
BIGELOW TAVERN HISTORIC DISTRICT
WEST BOYLSTON, MASSACHUSETTS
PHOTO: METROPOLITAN DISTRICT OF WATER, CA. 1900
ORIGINAL: WEST BOYLSTON HISTORICAL COMMISSION
VIEW: NORTH AND EAST (MAIN) FACADES, LOOKING SOUTHWEST



W. RES. WEST BOYLSTON,
SARAH M. SPORFORD. 1900

1900

BIGELOW TAVERN DISTRICT DISTILLERY, 64 WORCESTER STREET
BIGELOW TAVERN HISTORIC DISTRICT
WEST BOYLSTON, MASSACHUSETTS
PHOTO: METROPOLITAN DISTRICT OF WATER, CA. 1900
ORIGINAL: WEST BOYLSTON HISTORICAL COMMISSION
VIEW: WEST AND SOUTH FACADES, LOOKING EAST, BIGELOW TAVERN BUILDING ON RIGHT

UNITED STATES DEPARTMENT OF THE INTERIOR
NATIONAL PARK SERVICE

NATIONAL REGISTER OF HISTORIC PLACES
EVALUATION/RETURN SHEET

REQUESTED ACTION: NOMINATION

PROPERTY NAME: Bigelow Tavern Historic District

MULTIPLE NAME:

STATE & COUNTY: MASSACHUSETTS, Worcester

DATE RECEIVED: 1/13/92 DATE OF PENDING LIST: 1/28/92
DATE OF 16TH DAY: 2/13/92 DATE OF 45TH DAY: 2/27/92
DATE OF WEEKLY LIST:

REFERENCE NUMBER: 92000043

NOMINATOR: STATE

REASONS FOR REVIEW:

APPEAL: N DATA PROBLEM: N LANDSCAPE: N LESS THAN 50 YEARS: N
OTHER: N PDIL: N PERIOD: Y PROGRAM UNAPPROVED: N
REQUEST: N SAMPLE: N SLR DRAFT: Y NATIONAL: N

COMMENT WAIVER: N

___ACCEPT ___RETURN ___REJECT _____DATE

ABSTRACT/SUMMARY COMMENTS:

RECOM./CRITERIA Returns
REVIEWER Swag
DISCIPLINE Architectural History
DATE 2/27/92

DOCUMENTATION see attached comments Y/N see attached SLR Y/N

ARCHIVAL QUALITY
Perma/D

CLASSIFICATION

___count ___resource type

STATE/FEDERAL AGENCY CERTIFICATION

FUNCTION

___historic ___current

DESCRIPTION

___architectural classification
___materials
___descriptive text

SIGNIFICANCE

Period Areas of Significance--Check and justify below

Specific dates Builder/Architect
Statement of Significance (in one paragraph)

- ___summary paragraph
- ___completeness
- clarity
- ___applicable criteria
- justification of areas checked
- relating significance to the resource
- ___context
- ___relationship of integrity to significance
- ___justification of exception
- ___other

BIBLIOGRAPHY

GEOGRAPHICAL DATA

___acreage ___verbal boundary description
___UTMs ___boundary justification

ACCOMPANYING DOCUMENTATION/PRESENTATION

___sketch maps ___USGS maps ___photographs ___presentation

OTHER COMMENTS

Questions concerning this nomination may be directed to

Phone (202) 343-9840

Signed *Rey R. Savage*

Date 2/27/92

UNITED STATES DEPARTMENT OF THE INTERIOR
NATIONAL PARK SERVICE

NATIONAL REGISTER OF HISTORIC PLACES
EVALUATION/RETURN SHEET

REQUESTED ACTION: RESUBMISSION

PROPERTY NAME: Bigelow Tavern Historic District

MULTIPLE NAME:

STATE & COUNTY: MASSACHUSETTS, Worcester

DATE RECEIVED: 8/27/92 DATE OF PENDING LIST:
DATE OF 16TH DAY: DATE OF 45TH DAY: 10/18/92
DATE OF WEEKLY LIST:

REFERENCE NUMBER: 92000043

NOMINATOR: STATE

DETAILED EVALUATION: Y

ACCEPT RETURN REJECT _____ DATE

ABSTRACT/SUMMARY COMMENTS:

*Initial return comments
have been adequately addressed.*

RECOM./CRITERIA Accept
REVIEWER Jesse
DISCIPLINE Architectural History
DATE 9/24/92

DOCUMENTATION see attached comments Y/N see attached SLR Y/N

CLASSIFICATION

___count ___resource type

STATE/FEDERAL AGENCY CERTIFICATION

FUNCTION

___historic ___current

DESCRIPTION

___architectural classification
___materials
___descriptive text

SIGNIFICANCE

Period Areas of Significance--Check and justify below

Specific dates Builder/Architect
Statement of Significance (in one paragraph)

___summary paragraph
___completeness
___clarity
___applicable criteria
___justification of areas checked
___relating significance to the resource
___context
___relationship of integrity to significance
___justification of exception
___other

BIBLIOGRAPHY

GEOGRAPHICAL DATA

___acreage ___verbal boundary description
___UTMs ___boundary justification

ACCOMPANYING DOCUMENTATION/PRESENTATION

___sketch maps ___USGS maps ___photographs ___presentation

OTHER COMMENTS

Questions concerning this nomination may be directed to

_____ Phone _____

Signed _____ Date _____



BIGELOW'S TAVERN, 65 WORCESTER STREET

BIGELOW TAVERN HISTORIC DISTRICT

WEST BOYLSTON, MASSACHUSETTS

PHOTOGRAPHER: SUSAN M. D. CECCACCI

DATE: JANUARY 1990

NEGATIVE: WEST BOYLSTON HISTORICAL COMMISSION

VIEW: MAIN FACADE, LOOKING NORTHEAST

PHOTO #1

worcester

BIGELOW'S TAVERN, 65 WORCESTER STREET

BIGELOW TAVERN HISTORIC DISTRICT

WEST BOYLSTON, MA

PHOTOGRAPHER: SUSAN M. D. CECCACCI

JANUARY 1990

VIEW: MAIN FACADE, LOOKING NE

PHOTO #1



BIGELOW TAVERN DISTRICT STORE, 60 WORCESTER STREET

BIGELOW TAVERN HISTORIC DISTRICT

WEST BOYLSTON, MASSACHUSETTS

Worcester

PHOTOGRAPHER: SUSAN M.D. CECCACCI

DATE: JANUARY 1990

NEGATIVE: WEST BOYLSTON HISTORICAL COMMISSION

VIEW: MAIN FACADE, LOOKING NORTHWEST

PHOTO #2

BIGELOW TAVERN DISTRICT STORE, 60 WORCESTER STREET

BIGELOW TAVERN HISTORIC DISTRICT

WEST BOYLSTON, MA

PHOTOGRAPHER: SUSAN M.D. CECCACCI

JAN. 1990

VIEW: MAIN FACADE, LOOKING NW.

PHOTO #2



BIGELOW TAVERN DISTRICT DISTILLERY, 64 WORCESTER STREET

BIGELOW TAVERN HISTORIC DISTRICT

WEST BOYLSTON, MASSACHUSETTS

PHOTOGRAPHER: SUSAN M.S.D. CECCACCI

DATE: JANUARY 1990

NEGATIVE: WEST BOYLSTON HISTORICAL COMMISSION

VIEW: MAIN FACADE, LOOKING WEST

PHOTO # 3

worcester

BIGELOW TAVERN DISTRICT DISTILLERY, 64 WORCESTER ST.

BIGELOW TAVERN HISTORIC DISTRICT

WEST BOYLSTON, MA

PHOTOGRAPHER: SUSAN M.S.D. CECCACCI

JAN. 1990

VIEW: MAIN FACADE, LOOKING WEST

PHOTO # 3



BIGELOW TAVERN HISTORIC DISTRICT
WEST BOYLSTON, MASSACHUSETTS
PHOTOGRAPHER: SUSAN M. D. CECCACCI
DATE: MAY 1990

NEGATIVE: WEST BOYLSTON HISTORICAL COMMISSION

VIEW: LOOKING NORTHWEST FROM TAVERN GROUNDS, L TO R: DISTILLERY, STORE, TAVERN

PHOTO # 4

BIGELOW TAVERN HISTORIC DISTRICT

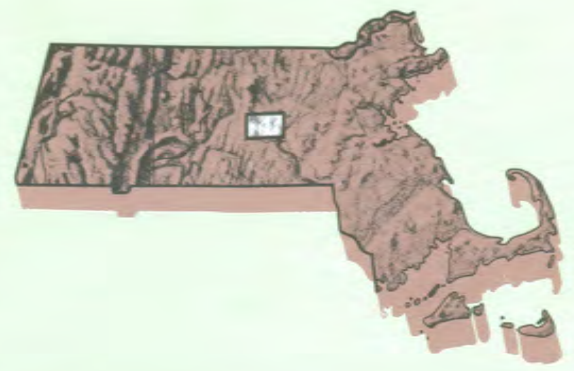
WEST BOYLSTON, MA

PHOTOGRAPHER: SUSAN M. D. CECCACCI
MAY 1990

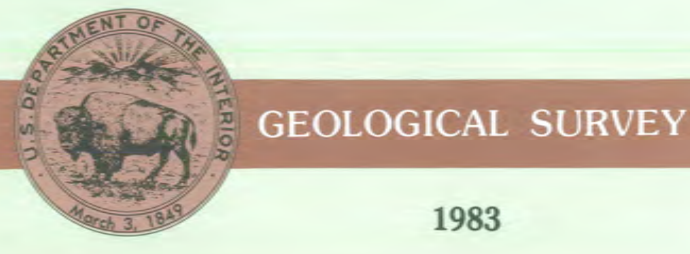
VIEW: LOOKING NW FROM TAVERN GROUNDS

L-TO-R: DISTILLERY, STORE, TAVERN

PHOTO # 4



- Contours and elevations in meters
- Highways, roads and other manmade structures
- Water features
- Woodland areas
- Geographic names



Produced by the United States Geological Survey in cooperation with Massachusetts Department of Public Works
Control by USGS, NOS/NOAA, and Massachusetts Geodetic Survey
Compiled by photogrammetric methods from aerial photographs taken 1980. Field checked 1982. Map edited 1983
Supersedes Paxton and Worcester North 1:25,000-scale maps dated 1965 and 1974

Projection and 1000-meter grid, zone 19: Universal Transverse Mercator
10,000-foot grid ticks based on Massachusetts coordinate system, mainland zone. 1927 North American Datum
To place on the predicted North American Datum 1983 move the projection lines 6 meters south and 40 meters west as shown by dashed corner ticks
There may be private inholdings within the boundaries of the National or State reservations shown on this map
CONTOUR INTERVAL 3 METERS
NATIONAL GEODETIC VERTICAL DATUM OF 1955
CONTROL ELEVATIONS SHOWN TO THE NEAREST 0.1 METER
OTHER ELEVATIONS SHOWN TO THE NEAREST 0.5 METER

THIS MAP COMPLIES WITH NATIONAL MAP ACCURACY STANDARDS

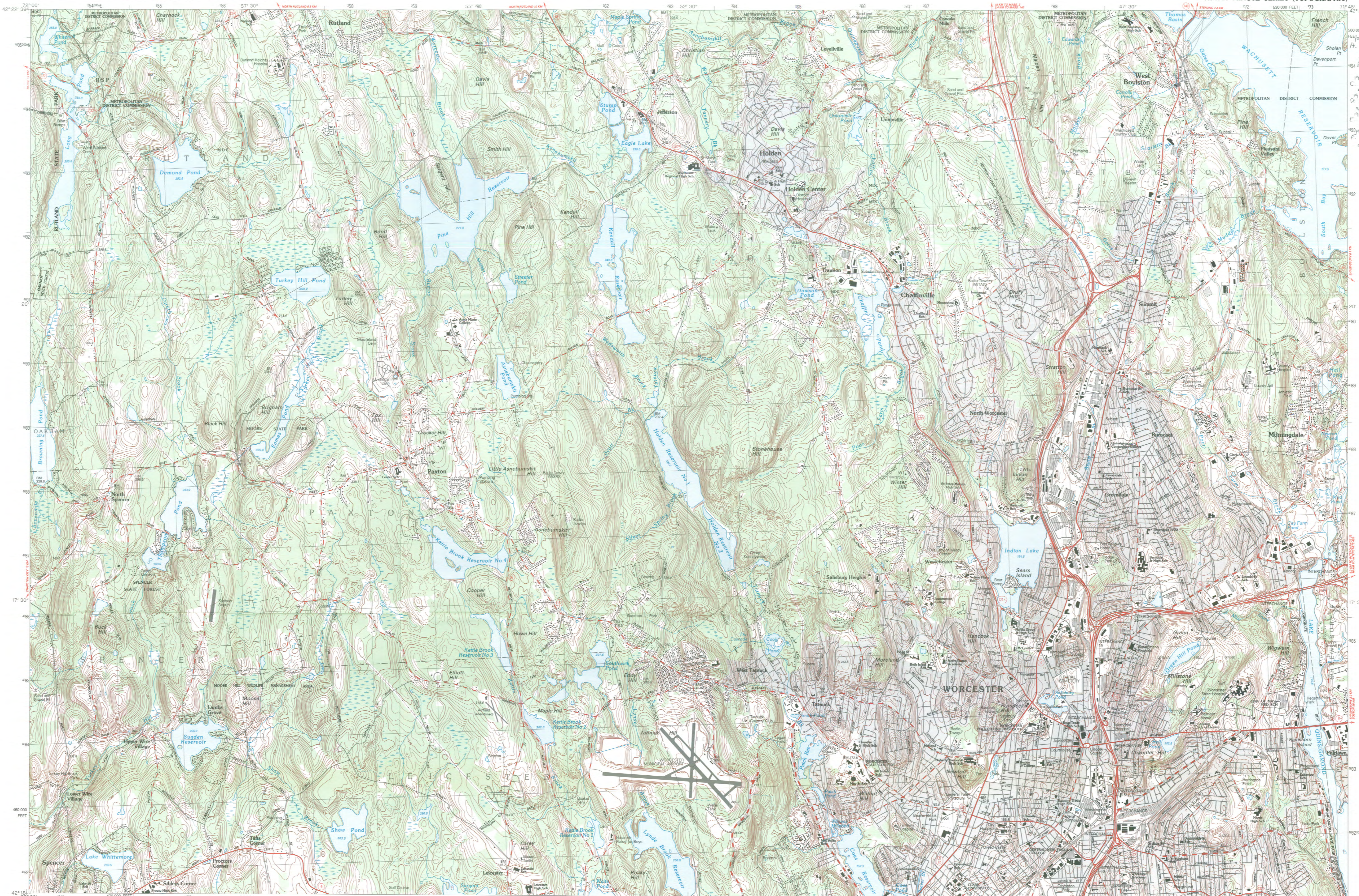
CONVERSION TABLE		DECLINATION DIAGRAM		ADJOINING MAPS		
Meters	Feet	Diagram showing magnetic declination for 1983		1	2	3
1	3.2808			4	5	
2	6.5617			6	7	8
3	9.8425			1 Bare		
4	13.1234			2 Sand		
5	16.4042			3 Hudson		
6	19.6850			4 North boundary		
7	22.9659			5 Marlborough		
8	26.2467			6 Worcester North		
9	29.5275			7 Worcester South		
10	32.8084			8 Hill		

FOR SALE BY U. S. GEOLOGICAL SURVEY
RESTON, VIRGINIA 22092

Topographic Map Symbols

- Primary highway, hard surface
- Secondary highway, hard surface
- Light-duty road, hard or improved surface
- Unimproved road, trail
- Route marker: Interstate; U. S.; State
- Railroad: standard gage; narrow gage
- Bridge: drawbridge
- Footbridge; overpass; underpass
- Battle area: only selected landmark buildings shown
- House; barn; church; school; large structure
- Boundary: National, with monument; State; County, parish; Civil township, precinct, district; Incorporated city, village, town; National or State reservation; small park; Land grant with monument; found section corner; U. S. public lands survey: range, township; section; Range, township; section line; location approximate; Fence or field line; Power transmission line, located tower; Dam; dam with lock; Cemetery; grave; Campground; picnic area; U. S. location monument; Windmill; water well, spring; Mine shaft; prospect; adit or cave; Control: horizontal station; vertical station; spot elevation; Contour: index, intermediate; supplementary; depression; Distorted surface: strip mine, levee, sand; Bathymetric contours: index, intermediate; Perennial lake and stream; intermittent lake and stream; Rapid, large and small; tide, trap and small; Submerged marsh; marsh, swamp; Land subject to controlled inundation; woodland; Orchard; vineyard

A pamphlet describing topographic maps is available on request





RECEIVED

JAN 13 1992

NATIONAL
REGISTER

January 6, 1992

Carol Shull
National Register of Historic Places
Department of the Interior
National Park Service
P.O. Box 37127
Washington, DC 20013-7127

Dear Ms. Shull:

Enclosed please find the following nomination:

Bigelow Tavern Historic District, 60, 64 and 65 Worcester Street, West
Boylston (Worcester County), Massachusetts 01583.

There have been no owner objections for the above nomination.

The nomination has been voted eligible by the State Review Board and has been signed by the State Historic Preservation Officer. Owners were notified of pending State Review Board consideration 30-75 days before the meeting and were afforded the opportunity to comment. Comments received to date have been included.

Sincerely,

Judith B. McDonough
Executive Director
State Historic Preservation Officer
Massachusetts Historical Commission

Enclosure:

cc: Susan McDaniel Ceccacci, Architectural Historian
Chairperson, West Boylston Historical Commission

PROPERTY NAME: Bigelow Tavern Historic District

OTHER NAME/ NOT APPLICABLE
SITE No. :

MULTIPLE NAME: NOT APPLICABLE

ADDRESS/ 60, 64 and 65 Worcester St.
BOUNDARY :

CITY: West Boylston

COUNTY: Worcester

STATE: MASSACHUSETTS

Restricted Location Information: Owner: PRIVATE Resource Type: DISTRICT

Contributing Noncontributing

Buildings	3	5
Sites	1	0
Structures	0	0
Objects	0	0

Nomination/Determination Type: SINGLE RESOURCE

Nominator: STATE GOVERNMENT

Nominator Name:
NOT APPLICABLE

Federal NOT APPLICABLE
Agency:

NPS Park Name: NOT APPLICABLE

Certification: DATE RECEIVED/PENDING NOMINATION

Date: 01/13/92

Other NOT APPLICABLE
Certification:

Historic DOMESTIC
Functions: COMMERCE/TRADE
AGRICULTURE/SUBSISTENCE

Historic SINGLE DWELLING
Subfunctions: HOTEL
DEPARTMENT STORE
RESTAURANT
PROCESSING

Current DOMESTIC
Functions: RECREATION AND CULTURE

Current SINGLE DWELLING
Subfunctions: SECONDARY STRUCTURE
MUSEUM

Level of LOCAL Applicable Criteria: EVENT
Significance: ARCHITECTURE/ENGINEERING

Significant Person's Name: NOT APPLICABLE

Criteria Considerations: NOT APPLICABLE

Area of Significance: ARCHITECTURE
COMMERCE
EXPLORATION/SETTLEMENT
SOCIAL HISTORY

Periods of: 1750-1799 1800-1824 Circa: Specific Sig. Years:
Significance: 1825-1849 1850-1874
1875-1899 1810
1831
1835

Architect/Builder/Engineer/
Designer: Cultural Affiliation:
NOT APPLICABLE

Unknown

Other Documentation:

NOT APPLICABLE

HABS No. N/A

HAER No. N/A

Architectural GEORGIAN
Styles: FEDERAL

Describe Other Style: NOT APPLICABLE

Foundation Materials: GRANITE
Wall Materials: WEATHERBOARD
Roof Materials: SLATE
Other Materials: ASPHALT

Acreage: 1.6

UTM	Zone	Easting	Northing	Zone	Easting	Northing
Coordinates:	19/	/2 70 860/	/46 93 910	19/	/2 70 900/	/46 93 900
	19/	/2 70 900/	/46 93 910	19/	/2 70 960/	/46 93 890
	19/	/2 70 970/	/46 93 860	19/	/2 70 880/	/46 93 810