

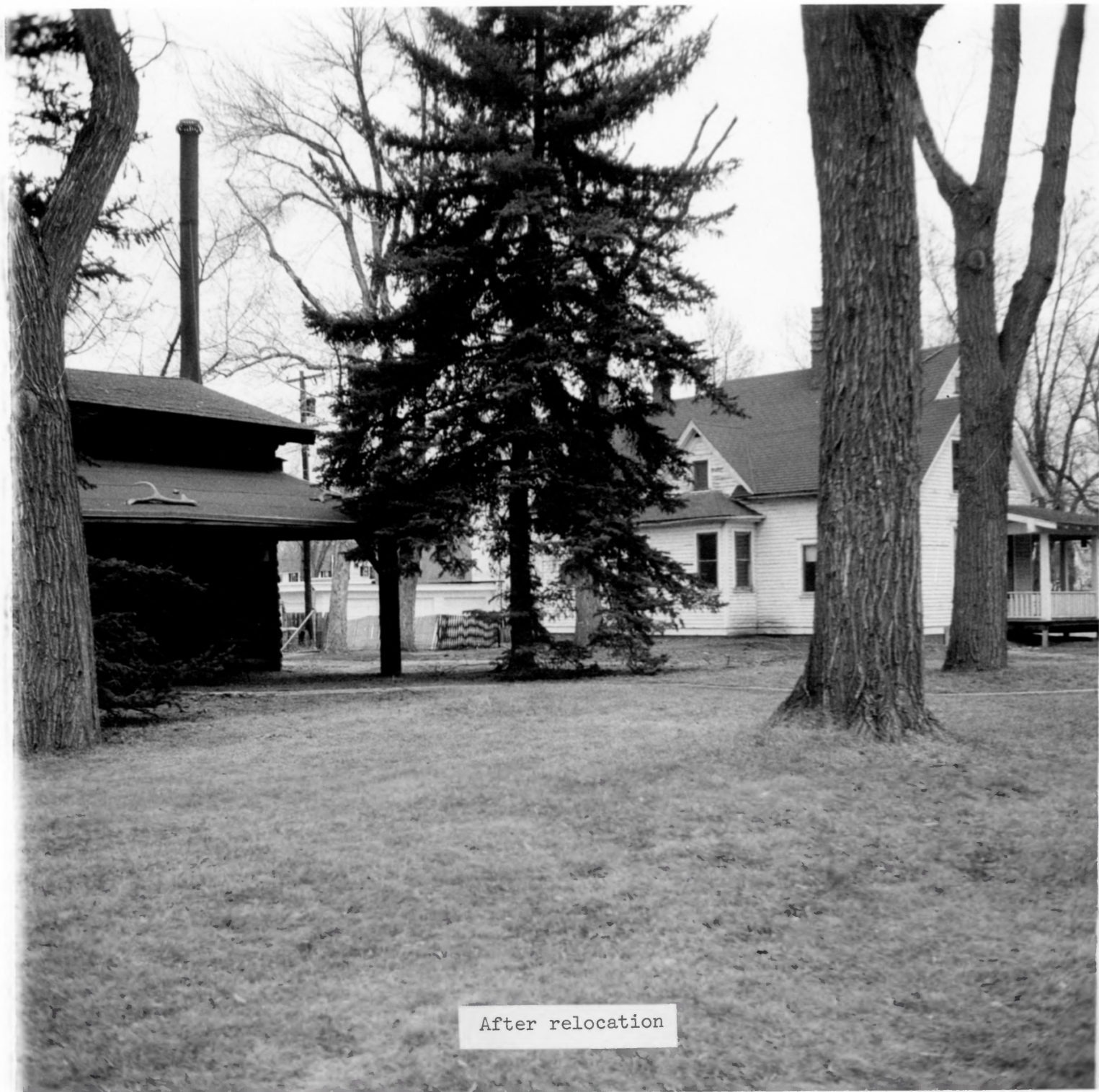


Before relocation

Charles Russell House and Studio

NPS c. 1973

before relocation of the house, from the southwest

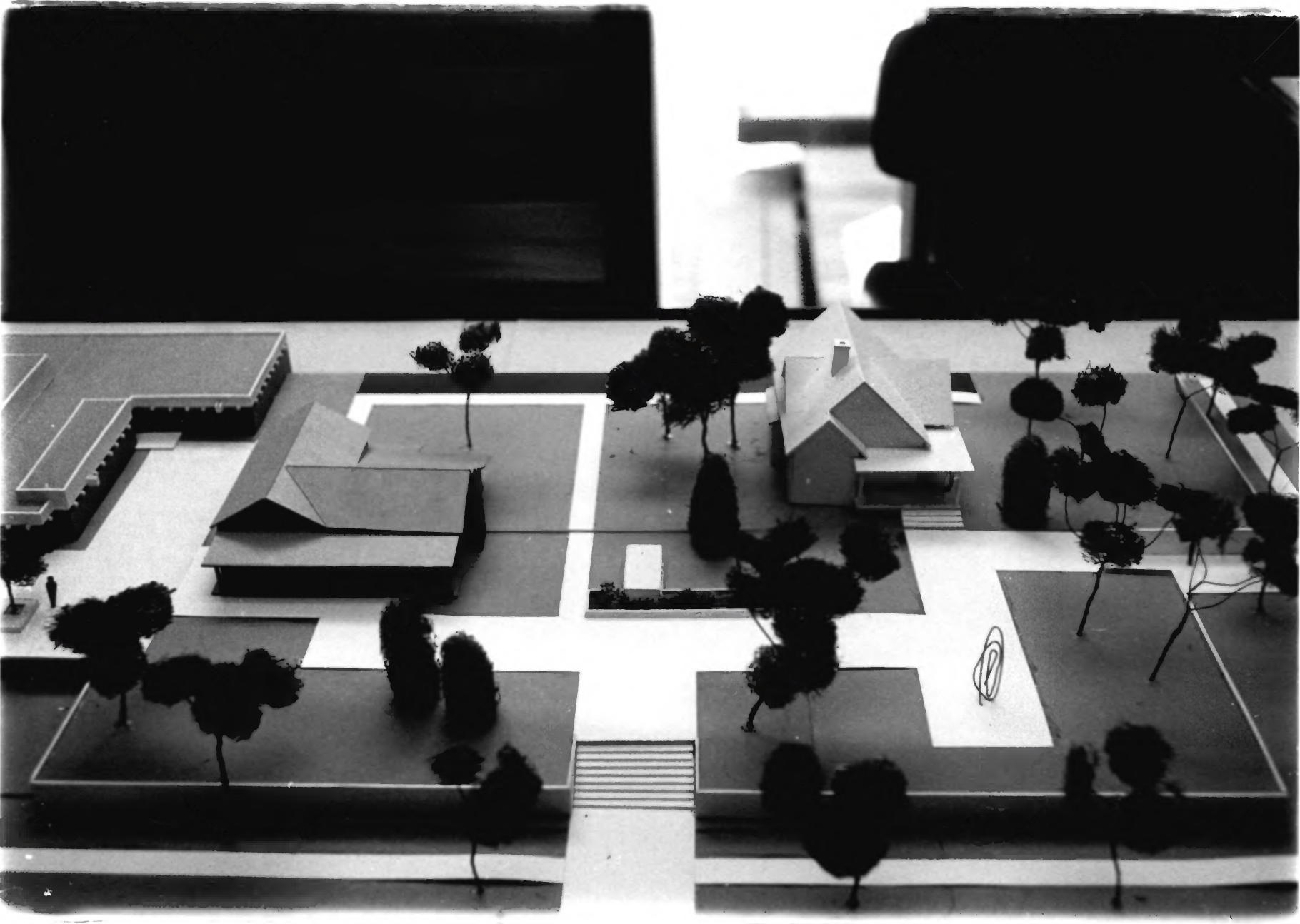


After relocation

Charles Russell House and Studio

NPS c.1973

after relocation, taken from the southwest



Plan of Charles Russell Area, (City-owned) c. 1972, with (l-r)

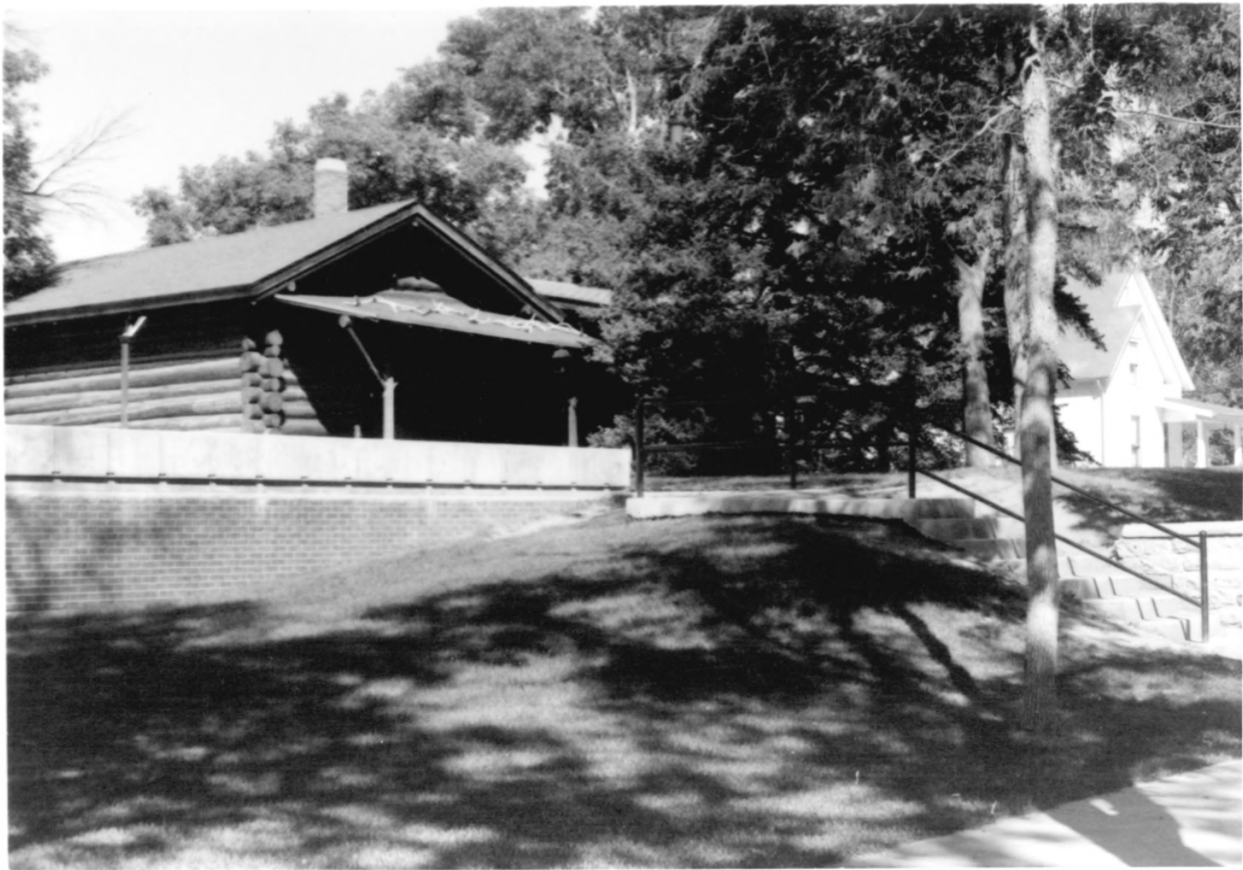
Art Museum, log cabin studio and house (moved) with new
walks and landscaping.



Charles Russell House and Studio

NPS 1975

Studio, southeast view of front and side
facades



Charles Russell House and Studio

NPS 1975

View of studio and house (to the right) with brick
wall of Art Museum's patio in the left foreground.
from the southwest



Charles Russell House and Studio

NPS 1975

Russell House, view of front and west facades,
taken from the southwest



Charles Russell House and Studio

NPS 1975

Russell House, view of rear and west facades,
taken from the northwest