



THE ILLUMINATION GAS PLANT OF  
THE NEW JERSEY STATE ASYLUM FOR THE INSANE AT MORRIS PLAINS

MORRIS COUNTY, N. J.

PHOTO # 1 of 9



THE ILLUMINATION GAS PLANT OF  
THE NEW JERSEY STATE ASYLUM FOR THE INSANE AT MORRIS PLAINS

MORRIS COUNTY, N.J.

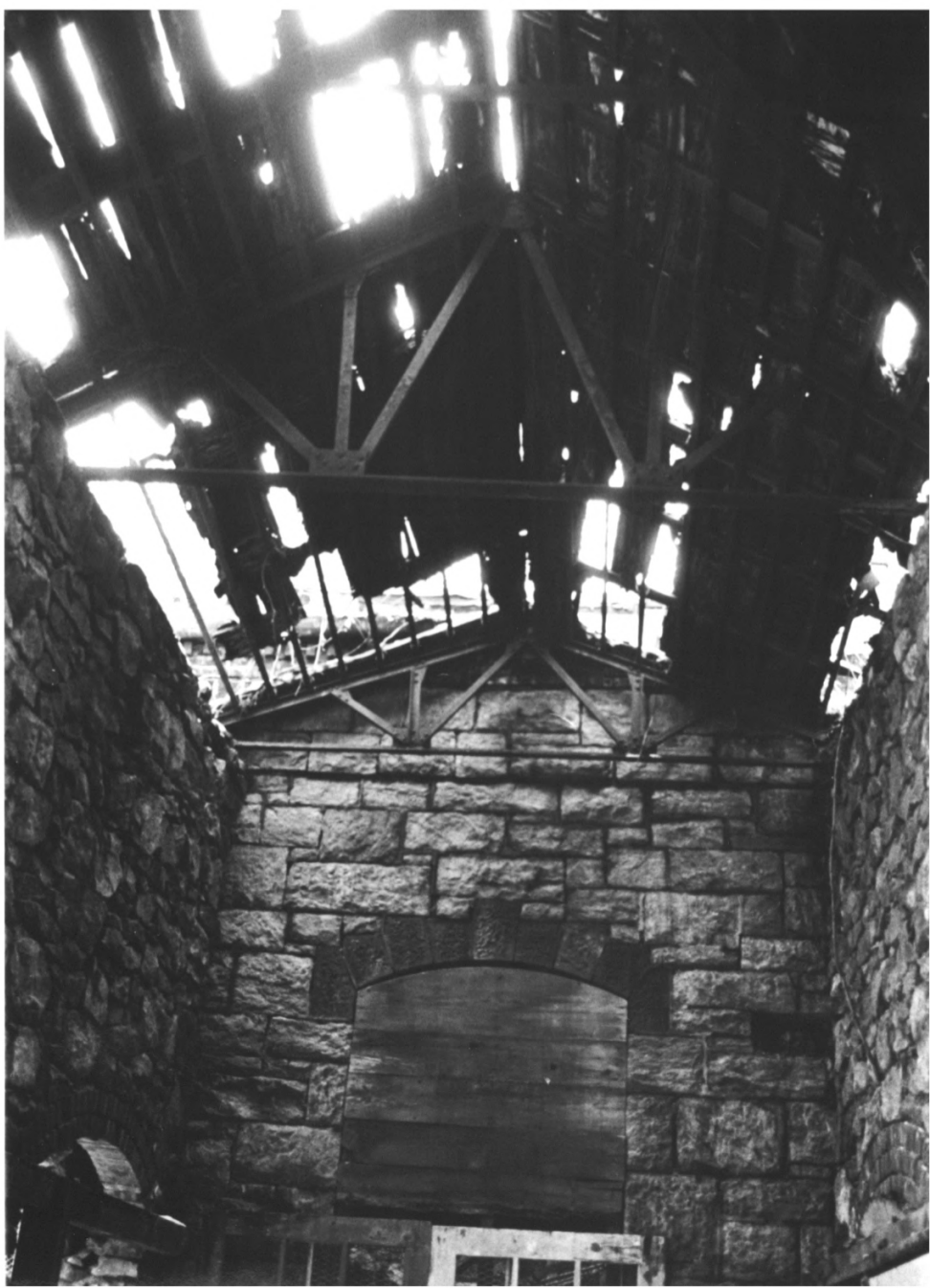
PHOTO\* 2 of 9



THE ILLUMINATION GAS PLANT OF  
THE NEW JERSEY STATE ASYLUM FOR THE INSANE AT MORRIS PLAINS

MORRIS COUNTY, N.J.

PHOTO\*3 of 9



THE ILLUMINATION GAS PLANT OF  
THE NEW JERSEY STATE ASYLUM FOR THE INSANE AT MORRIS PLAINS

MORRIS COUNTY, N. J.

PHOTO #4 of 9

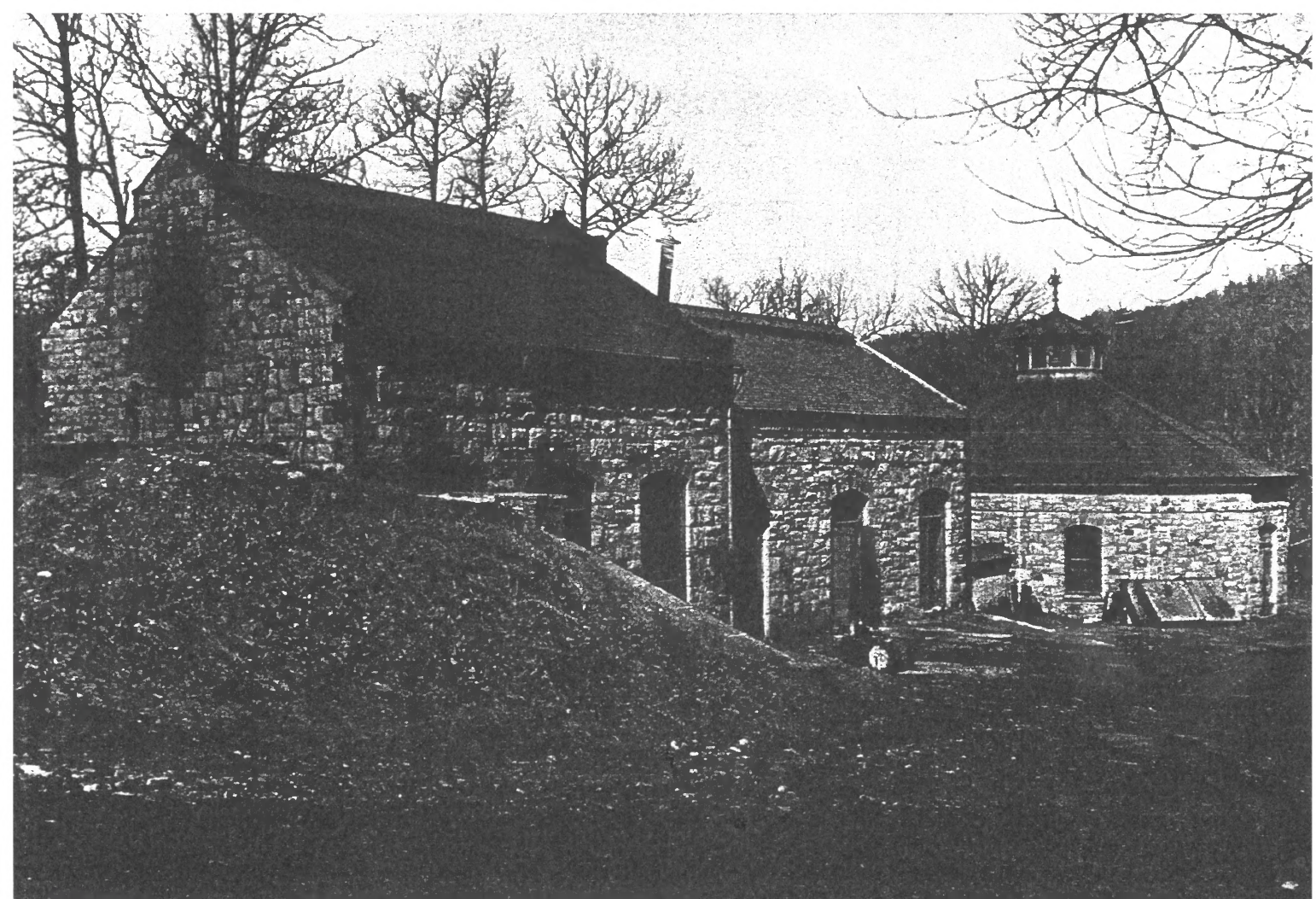




THE ILLUMINATION GAS PLANT OF  
THE NEW JERSEY STATE ASYLUM FOR THE INSANE AT MORRIS PLAINS  
PHOTO # 5 of 9

MORRIS COUNTY N. J.

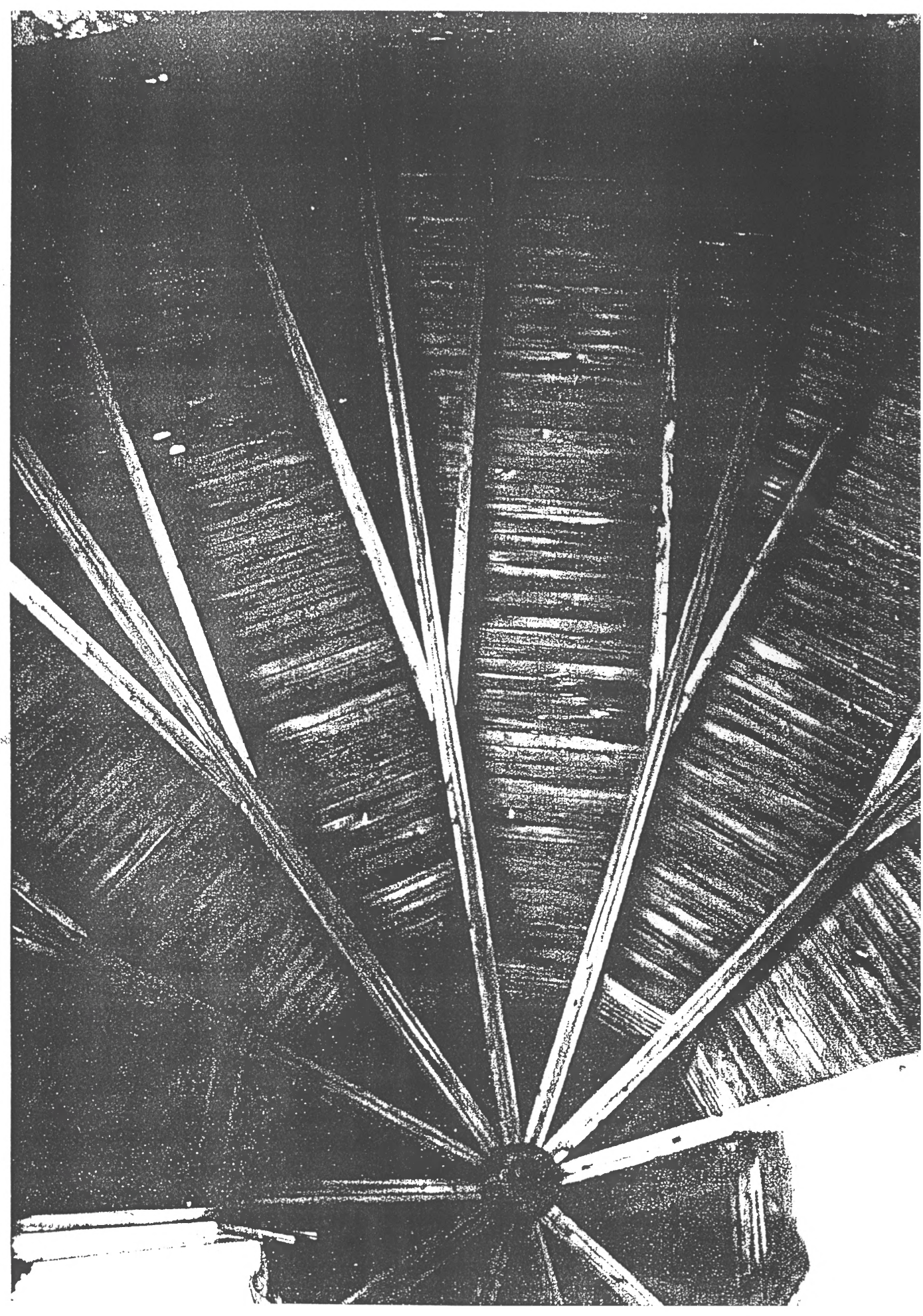




THE ILLUMINATION GAS PLANT  
OF THE NEW JERSEY STATE ASYLUM FOR THE INSANE AT MORRIS PLAINS

MORRIS COUNTY, N. J.

PHOTO # 7 of 9









THE ILLUMINATION GAS PLANT OF  
THE NEW JERSEY STATE ASYLUM FOR THE INSANE AT MORRIS PLAWS

MORRIS COUNTY, N.J.

PHOTO # 10 OF 55



THE ILLUMINATION GAS PLANT FOR N.J. STATE ASYLUM FOR INSANE AT MORRIS PLAINS

MORRIS COUNTY, N.J.

PHOTO # 11 OF 55



THE ILLUMINATION GAS PLANT OF  
THE N. J. STATE ASYLUM FOR THE INSANE AT MORRIS PLAINS  
MORRIS COUNTY. N. J. PHOTO #12 OF 55



THE ILLUMINATION GAS PLANT OF  
THE NEW JERSEY STATE ASYLUM FOR THE INSANE AT MORRIS PLAINS  
Morris County, N.J. PHOTO #13 of 55





THE ILLUMINATION GAS PLANT OF  
THE NEW JERSEY STATE ASYLUM FOR THE INSANE AT MORRIS PLAINS

MORRIS COUNTY, N.J.

PHOTO #14 OF 55



THE ILLUMINATION GAS PLANT OF  
THE NEW JERSEY STATE ASYLUM FOR THE INSANE AT MORRIS PLAINS  
MORRIS COUNTY, N.J

PHOTO #15 OF 55



THE ILLUMINATION GAS PLANT OF  
THE NEW JERSEY STATE ASYLUM FOR THE INSANE AT MORRIS PLAINS  
MORRIS COUNTY, N.J.

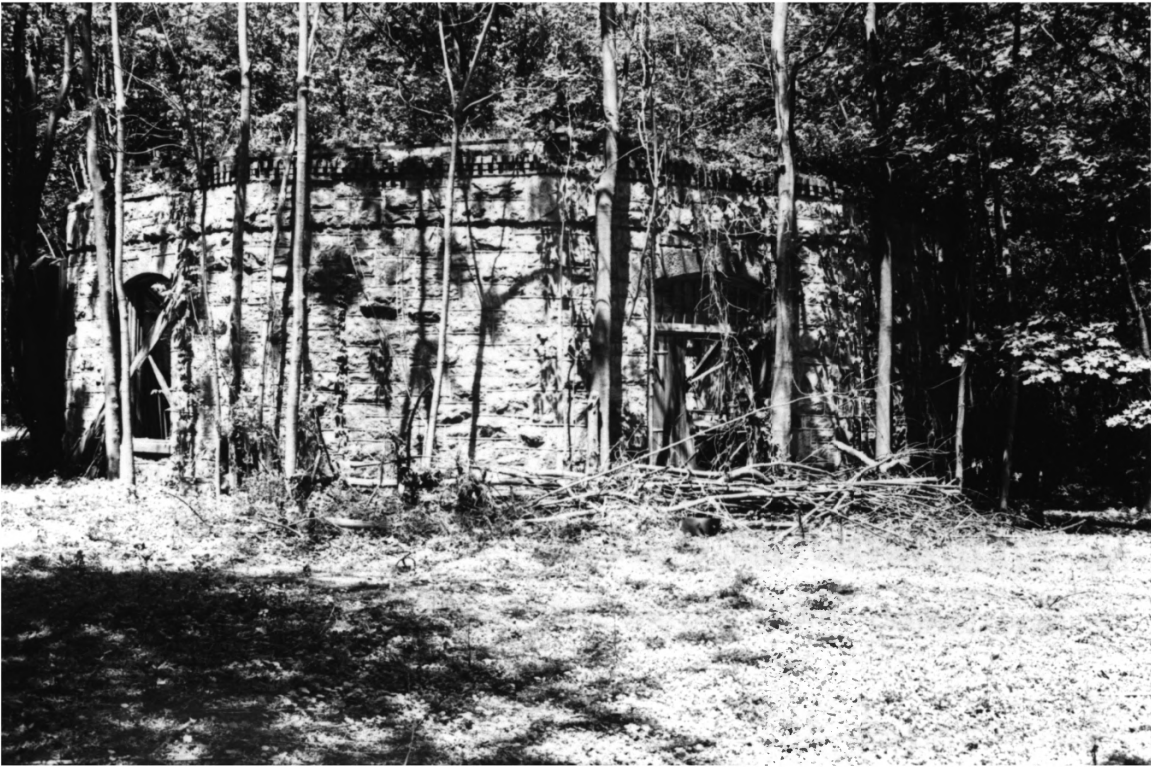
PHOTO #16 OF 55



THE ILLUMINATION GAS PLANT OF  
THE NEW JERSEY STATE ASYLUM FOR THE INSANE AT MORRIS PLAINS

MORRIS COUNTY, N.J.

PHOTO #17 OF 55

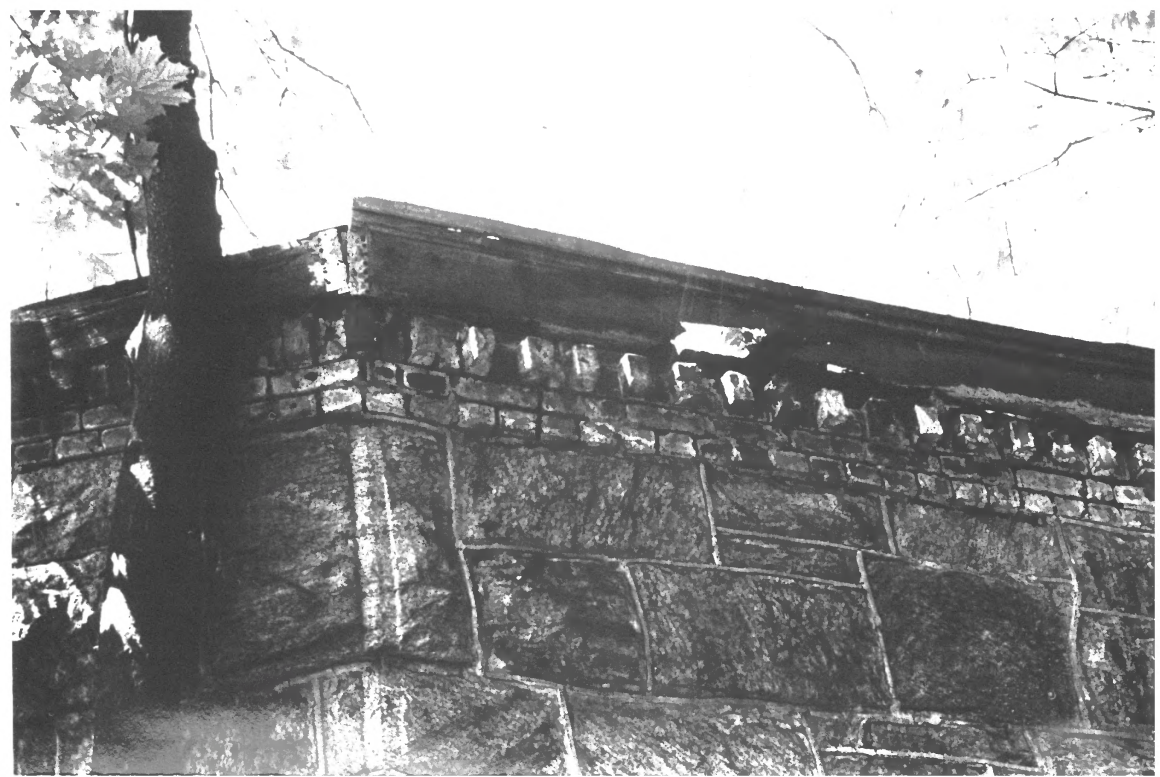




THE ILLUMINATION GAS PLANT OF  
THE NEW JERSEY STATE ASYLUM FOR THE INSANE AT MORRIS PLAINS,

MORRIS COUNTY, N.J.

PHOTO #18 OF 55



THE ILLUMINATION GAS PLANT OF  
THE NEW JERSEY STATE ASYLUM FOR THE INSANE AT MORRIS PLAINS,

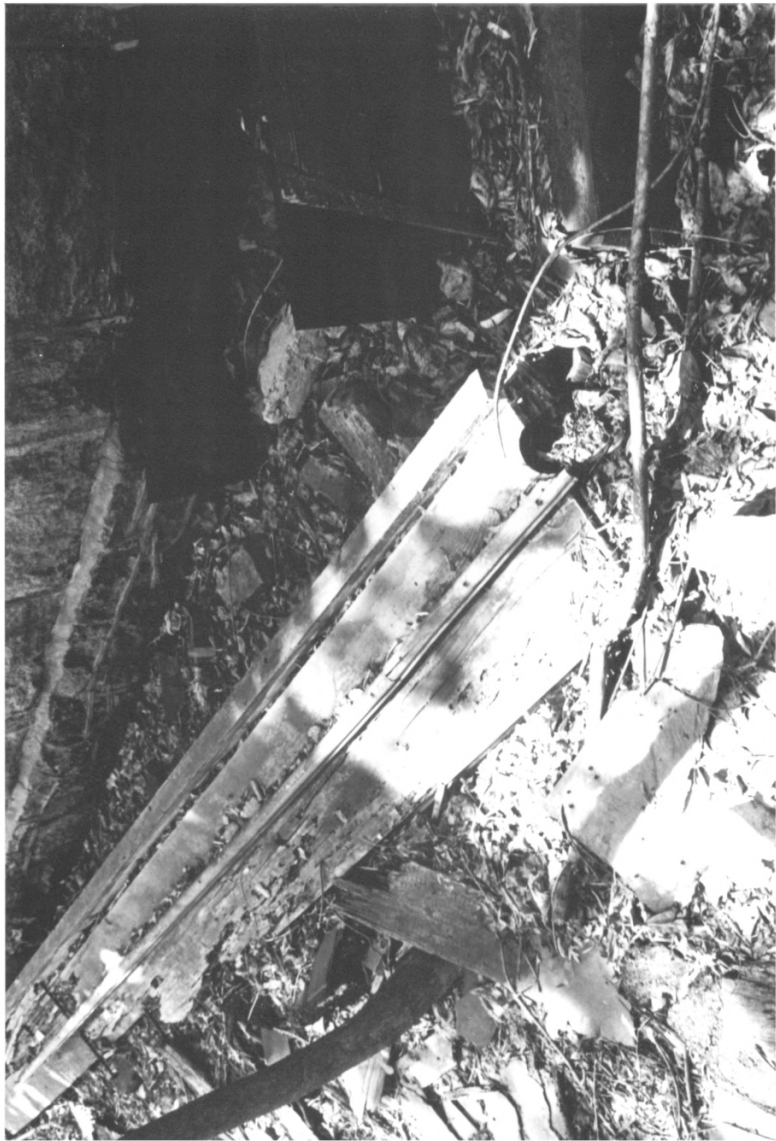
MORRIS COUNTY, N.J.

PHOTO #19 OF 55



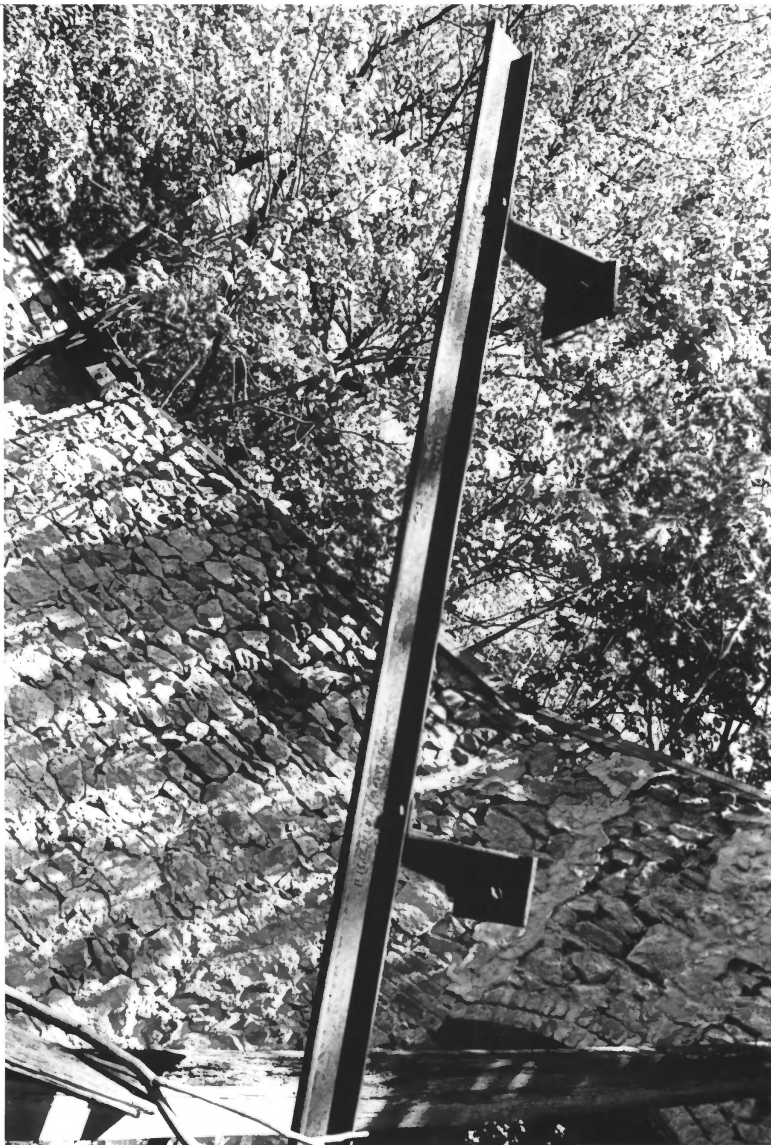
THE ILLUMINATION GAS PLANT OF  
THE NEW JERSEY STATE ASYLUM  
FOR THE INSANE AT MORRIS PLAINS  
MORRIS COUNTY, N.J.

PHOTO #20055



THE ILLUMINATION GAS PLANT OF  
THE NEW JERSEY STATE ASYLUM  
FOR THE INSANE AT MORRIS PLAINS  
MORRIS COUNTY, N.J.

PHOTO #21 OF 55





THE ILLUMINATION GAS PLANT OF  
THE NEW JERSEY STATE ASYLUM  
FOR THE INSANE AT MORRIS PLAINS  
MORRIS COUNTY, N.J.



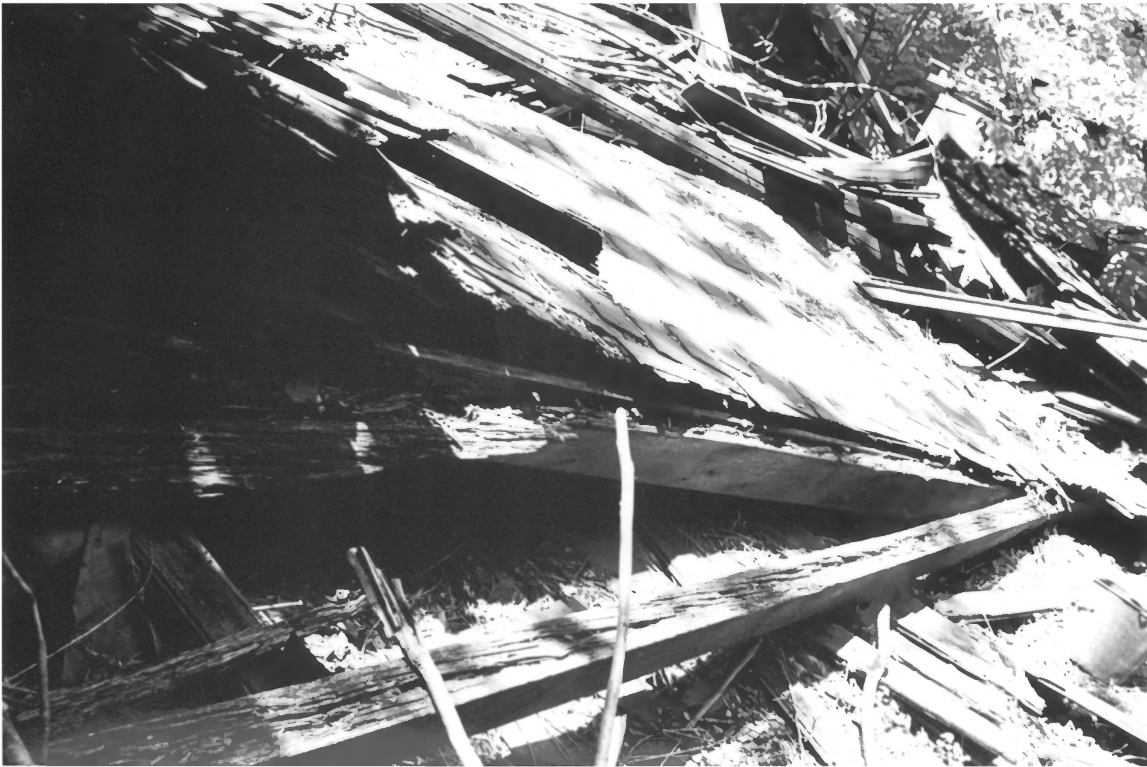
THE ILLUMINATION GAS PLANT OF  
THE NEW JERSEY STATE ASYLUM  
FOR THE INSANE AT MORRIS PLAINS  
MORRIS COUNTY, N.J.

PHOTO #23 OF 55



THE ILLUMINATION GAS PLANT OF  
THE NEW JERSEY STATE ASYLUM  
FOR THE INSANE AT MORRIS PLAINS  
MORRIS COUNTY, N.J.

PHOTO #24 OF 55



THE ILLUMINATION GAS PLANT OF  
THE NEW JERSEY STATE ASYLUM FOR THE INSANE AT MORRIS PLAINS

MORRIS COUNTY, N.J.

PHOTO #25 OF 55





THE ILLUMINATION GAS PLANT OF  
THE NEW JERSEY STATE ASYLUM FOR THE INSANE AT MORRIS PLAINS

MORRIS COUNTY, N.J.

PHOTO #26 OF 55



THE ILLUMINATION GAS PLANT OF  
THE NEW JERSEY STATE ASYLUM FOR THE INSANE AT MORRIS PLAINS

Morris County, N.J

PHOTO #27 OF 55



THE ILLUMINATION GAS PLANT OF  
THE NEW JERSEY STATE ASYLUM FOR THE INSANE AT  
MORRIS PLAINS,

Morris County, N.J.

PHOTO #28 OF 55



THE ILLUMINATION GAS PLANT OF  
THE NEW JERSEY STATE ASYLUM FOR THE  
INSANE AT MORRIS PLAINS

Morris County, N. J.

PHOTO #29 OF 55





THE ILLUMINATION GAS PLANT OF  
THE NEW JERSEY STATE ASYLUM FOR  
THE INSANE AT MORRIS PLAINS,

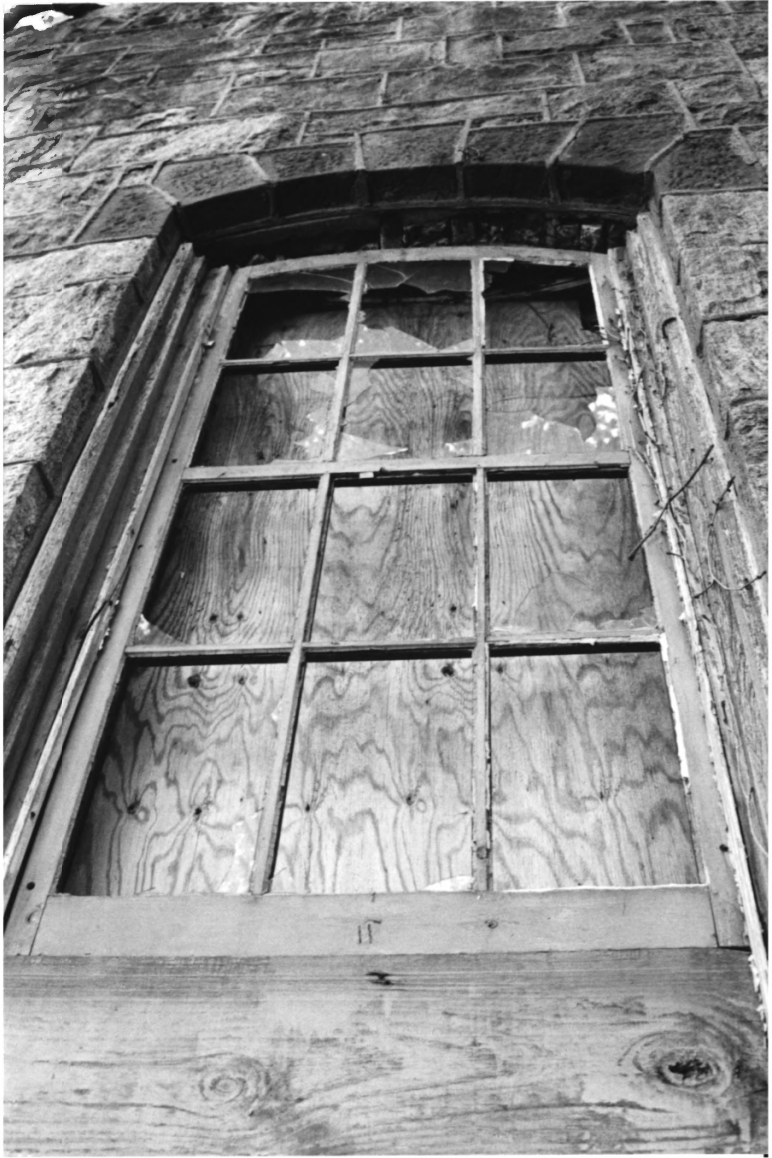
Morris County, N.J.

PHOTO #30 OF 55



THE ILLUMINATION GAS PLANT OF  
THE NEW JERSEY STATE ASYLUM FOR  
THE INSANE AT MORRIS PLAINS  
MORRIS COUNTY, N.J.

Photo # 31 of 55



THE ILLUMINATION GAS PLANT OF  
THE NEW JERSEY STATE ASYLUM FOR  
THE INSANE AT MORRIS PLAINS  
MORRIS COUNTY, N.J.

PHOTO #32 OF 55



THE ILLUMINATION GAS PLANT OF  
THE N.J. STATE ASYLUM FOR THE INSANE AT MORRIS PLAINS  
Morris County, N.J.

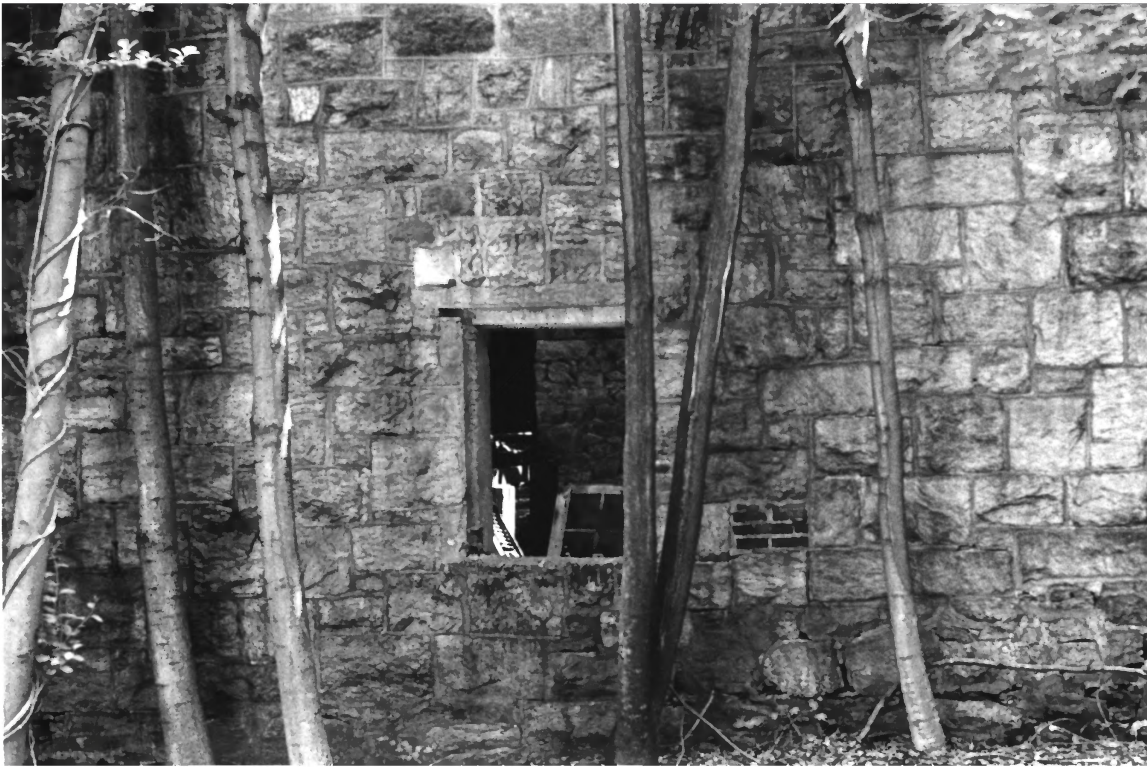
PHOTO# 33 of 55





THE ILLUMINATION GAS PLANT OF  
THE N.J. STATE ASYLUM FOR THE INDIANE AT MORRIS PLAINS  
MORRIS COUNTY, N.J.

Photo # 34 of 55



THE ILLUMINATION GAS PLANT OF  
THE N.J. STATE ASYLUM FOR THE INSANE AT MORRIS PLAINS  
Morris County, N.J.

Photo # 35 of 55



THE ILLUMINATION GAS PLANT OF  
THE N.J. STATE ASYLUM FOR THE INSANE AT MORRIS PLAINS

Morris County, N.J.

PHOTO #36 OF 55



THE ILLUMINATION GAS PLANT OF  
THE N.J. STATE ASYLUM FOR THE INSANE AT MORRIS PLAINS

Morris County, N.J.

PHOTO # 37 of 55





THE ILLUMINATION GAS PLANT OF  
THE NEW JERSEY STATE ASYLUM FOR THE INSANE  
AT MORRIS PLAINS.

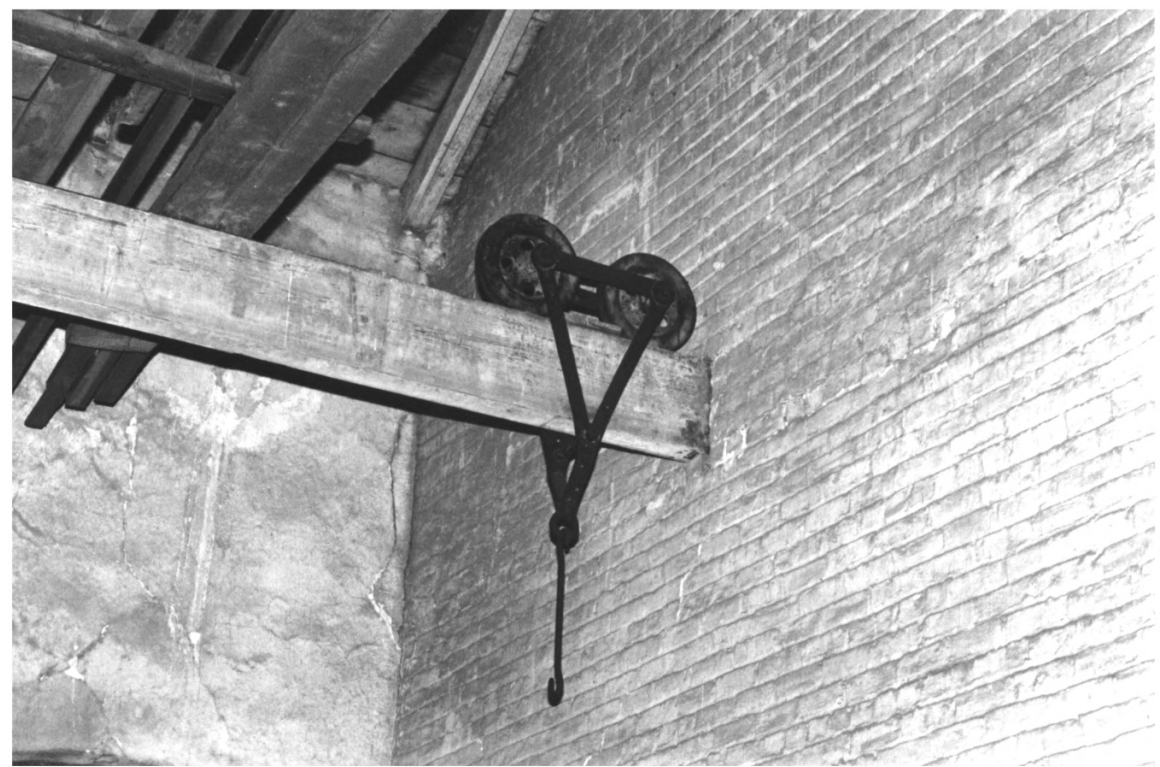
Morris County, N. J.

Photo #38 of 55



THE ILLUMINATION GAS PLANT OF  
THE N.J. STATE ASYLUM FOR THE INSANE AT MORRIS PLAINS  
Morris County, N.J.

PHOTO # 39 of 55



THE ILLUMINATION GAS PLANT OF  
THE N. J. STATE ASYLUM FOR THE INSANE AT MORRIS PLAINS  
MORRIS COUNTY, N. J. PHOTO # 40 of 55



THE ILLUMINATION GAS PLANT OF  
THE N.J. STATE ASYLUM FOR THE INSANE AT MORRIS PLAINS

MORRIS COUNTY, N.J.

PHOTO #41 of 55





THE ILLUMINATION GAS PLANT OF  
THE N.J. STATE ASYLUM FOR THE INSANE AT MORRIS PLAINS

MORRIS COUNTY, N.J.

PHOTO #42 of 55



THE ILLUMINATION GAS PLANT OF  
THE N.J. STATE ASYLUM FOR THE INSANE AT MORRIS PLAINS

PHOTO #43 of 55

MORRIS COUNTY, N.J.



THE ILLUMINATION GAS PLANT OF  
THE N. J. STATE ASYLUM FOR INSANE AT MORRIS PLAINS

MORRIS COUNTY, N. J.

PHOTO #44 of 55



THE ILLUMINATION GAS PLANT OF  
THE N. J. STATE ASYLUM FOR THE INSANE AT MORRIS PLAINS

MORRIS COUNTY, N. J.

PHOTO #45 of 55





THE ILLUMINATION GAS PLANT OF  
THE N. J. STATE ASYLUM FOR THE INSANE AT MORRIS PLAINS

MORRIS COUNTY, N. J.

PHOTO # 46 of 55



THE ILLUMINATION GAS PLANT OF  
THE N. J. STATE ASYLUM FOR THE INSANE AT MORRIS PLAWS

MORRIS COUNTY, N. J.

PHOTO #47 of 55



THE ILLUMINATION GAS PLANT OF  
THE N. J. STATE ASYLUM FOR THE INSANE AT MORRIS PLAINS

MORRIS COUNTY, N. J.

PHOTO #48 of 55



THE ILLUMINATION GAS PLANT OF  
THE N. J. STATE ASYLUM FOR THE INSANE AT MORRIS PLAINS

MORRIS COUNTY, N. J.

PHOTO #49 of 55





THE ILLUMINATION GAS PLANT OF  
THE N.J. STATE ASYLUM FOR THE INSANE AT MORRIS PLAINS  
MORRIS COUNTY, N.J.

PHOTO #50 of 55



THE ILLUMINATION GAS PLANT OF  
THE N. J. STATE ASYLUM FOR THE INSANE AT MORRIS PLAINS

MORRIS COUNTY, N. J.

PHOTO # 57 of 55



THE ILLUMINATION GAS PLANT OF  
THE N.J. STATE ASYLUM FOR THE INSANE AT MORRIS PLAINS

MORRIS COUNTY, N.J.

PHOTO # 52 of 55



THE ILLUMINATION GAS PLANT OF  
THE N.J. STATE ASYLUM FOR THE INSANE AT MORRIS PLAINS

MORRIS COUNTY, N.J.

PHOTO #53 of 55





THE ILLUMINATION GAS PLANT OF  
THE N. J. STATE ASYLUM FOR THE INSANE AT MORRIS PLAINS

MORRIS COUNTY, N. J.

Photo # 54 & 55

